

HX145A LCR

With EU Stage V Engine Installed

* Photo may include optional equipment.



Head Office(Sales Office)
14F, GLOBAL R&D CENTER, 477 BUNDANG SUSEO-RO, BUNDANG-GU, SEONGNAM-SI, GYEONGGI-DO, 13553, KOREA

PLEASE CONTACT

Gross Power
100 kW (134 HP) at 2,200 rpm

Net Power
98 kW (131 HP) at 2,200 rpm

Bucket Capacity
0.50 ~ 0.77 m³

Operating Weight
15,430 kg / 34,020 lb

WHAT'S NEWEST AND BEST

HX145A LCR

THE BEST PRODUCTIVITY AND FUEL EFFICIENCY

- EU STAGE V Engine **NEW**
- Eco Report **NEW**
- Lifting Mode **NEW**
- IPC(Intelligent Power Control) **Upgrade**
- Fuel Rate Information
- Eco Gauge
- Automatic Engine Shutdown

NEW EXTERIOR DESIGN FOR ROBUSTNESS AND SAFETY

- ROPS / FOG Cabin **Option**
- Reinforced Durability of Upper and Lower Structure and Attachments
- Durable Cooling Module
- High-grade (High-pressure) Hoses

EASY CONTROL AND COMFORTABLE OPERATION

- Key On Init Work Mode **NEW**
- Cabin Handle Improvement **NEW**
- One Pedal Travel Straight **Option**
- Proportional Auxiliary Hydraulic System **Option**
- 2 Way Proportional RCV & Pedal Control Selection **Option**
- Fine(Cushion/Free) Swing Control **Option**
- Intelligent & Wide Cluster
- OME(Owner Menu Editing)
- Boom/Arm Speed

THE ULTIMATE SAFE ENVIRONMENT

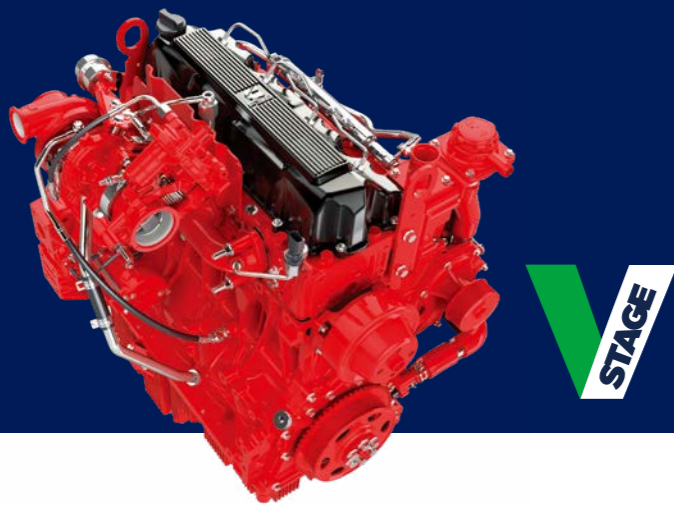
- Auto Safety Lock **NEW**
- Electronic Swing Parking Brake **NEW**
- AAVM **Option**
- RH Side View Camera **Option**
- Seatbelt Warning Alarm
- Emergency Engine Stop Switch

SERVICEABILITY AND TELEMATICS

- Hi MATE **Option**
 - ECD(Engine Connected Diagnostics) **NEW**
 - Mobile Fleet App
- HCE-DT Air **NEW**
- 2x Longer Lasting Filter (1000hr)
- Improved Routine Maintenance **Upgrade**



* Photo may include optional equipment.

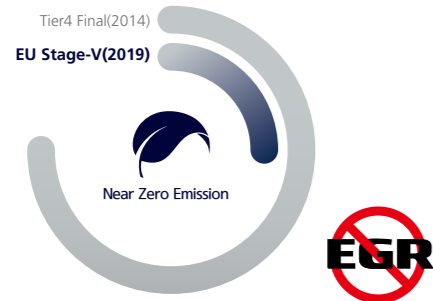


EU Stage V Certified Engine

Cummins F3.8 engine is satisfying the most strict environmental emission regulation in the world (Reduction in PM 60%)

EU STAGE V Engine **NEW**

Now in its fourth decade of continuous improvement, the F3.8 for 2019 feature an EGR-free design that delivers 8 percent more power and 4 percent fuel economy and longer maintenance intervals contribute to a reduced cost of operation.



Lifting Mode **NEW**

This work mode improves fine operability and lift capability through RPM reduction, power boost action and pump flow control.

IPC (Intelligent Power Control) **Upgrade**

HX A Series adopts the upgraded IPC system. It is able to optimize pump flow rate and power at the various working condition through the individual pump control. Furthermore, optimized design of MCV and pipe line minimizes energy loss such as conflux and throttle loss.



ENVIRONMENTALLY FRIENDLY FUEL EFFICIENCY

ECO REPORT **NEW**

It reports the excavator's inefficient operation status and help improving operator's working habit.



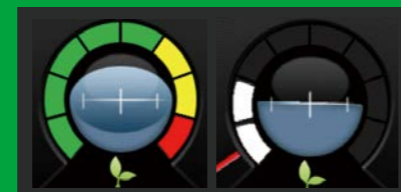
FUEL RATE INFORMATION

Fuel information is displayed as average rate and latest fuel consumed for guiding to economy operating.



ECO GAUGE

Gauge level changes in accordance with engine working load and color indicates fuel saving-operation status.



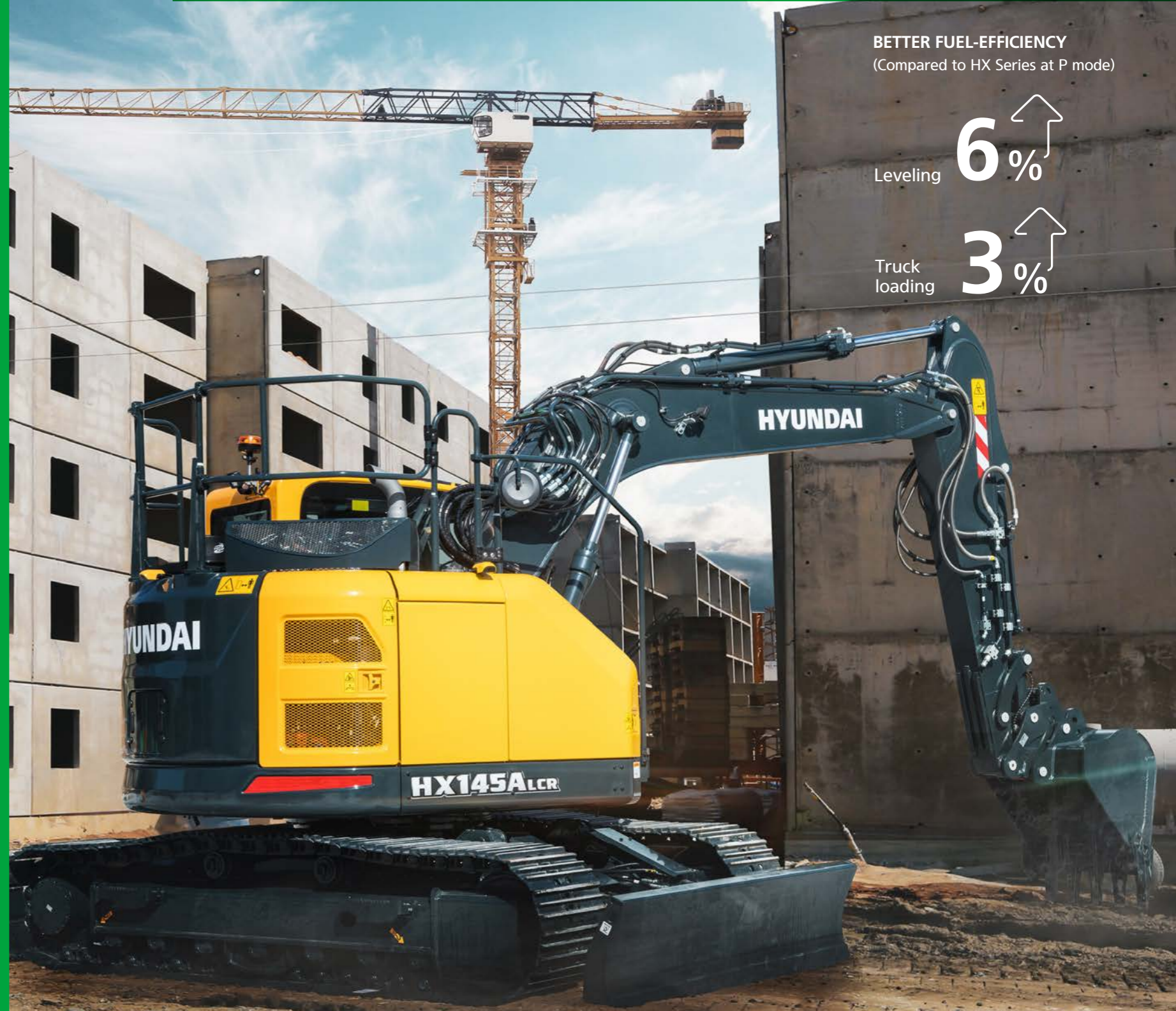
AUTOMATIC ENGINE SHUTDOWN

Adjustable 'Automatic Engine Shutdown' significantly reduces idle time, overall operating hours and fuel consumption.



THE BEST PRODUCTIVITY AND FUEL EFFICIENCY

HX A Series is equipped with eco-friendly, high-performance engines that meet the EU Stage V emission requirements.



BETTER FUEL-EFFICIENCY
(Compared to HX Series at P mode)



* Photo may include optional equipment.



NEW EXTERIOR DESIGN FOR ROBUSTNESS AND SAFETY

The true value of HX A Series lies in its durability and high productivity. The robust upper and lower frame structure can endure external shock and heavy work loads. Attachment performance has been proven through rigorous field testing. No matter how tough the working environment is, you can always rely on the HYUNDAI Excavator HX A Series.



*Photo may include optional equipment.



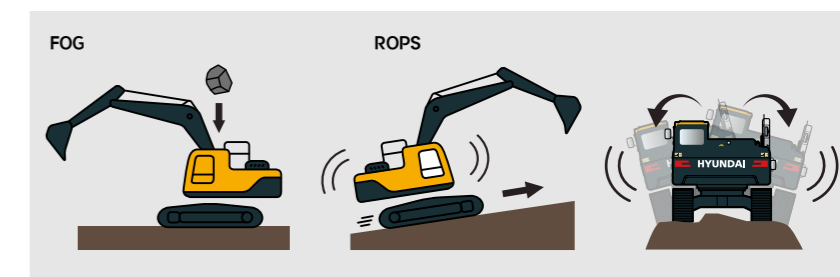
We make the best performance in rough working conditions without any unsureness with trustworthy HX145A LCR. //

HX A Series is equipment with eco-friendly, high-performance engines that meet the EU Stage V emission requirement. Become a true leader on the ground with HX A Series.

✓ ROPS / FOG Cabin

The cabin structure of Hyundai HX A Series is using integrally welded low-stress, high strength steel to meet ROPS and FOG certification.

- **ROPS** : Roll-Over Protective Structures ISO12117-2
- **FOG** : Falling Object Guard, ISO10262 Level2 **Option**



✓ Reinforced Durability of Upper and Lower Structure and Attachments

The upper and lower structure and attachments of HX A Series have higher durability than demanded on the site, as proven through numerous tests including road tests and virtual simulation. The wear resistance of the bucket has been improved by use of new material.



Durable Cooling Module

HX A Series has a durable cooling module that passed stringent tests, demonstrating the highest productivity in tough working environments.

Hi-grade (High-pressure) Hoses

The HX A Series uses high-pressure hoses with improved heat and pressure resistance, greatly increasing the durability of the equipment.



EASY CONTROL AND COMFORTABLE OPERATION

Many electronic functions are concentrated in the most convenient spot for operators to improve work efficiency. The highly-advanced infotainment system, a product of HCE's intensive information technology development, enables both productivity and comfort while working! HX A Series is designed with the operator in mind.

* Photo may include optional equipment.

Intelligent & Wide Cluster

The 8"capacitive-type display(like smart phone display) of HX A Series is delivering excellent legibility. The centralized switches on the display allow convenience of checking the urea level and temperature outside the cabin.

Front Side Air-Vent



One Pedal Travel Straight Option

One pedal straight travel is available for customers' convenience when long distance traveling or combination of attachment work with traveling is necessary.



Proportional Auxiliary Hydraulic System Option

Proportional control switch with better speed control helps operators to enlarge the operation convenience whenever they do time-consuming work. And this function can be switched with pedal valve in cluster setting menu. Newly added detent function allows an operator to continue using 2 way piping flow even if the operator does not keep pressing proportional control switch.

Key On Init Work Mode NEW

Operator can maintain previously set about attachment mode when starting.



Cabin Handle Improvement NEW

Handle design on the cabin door is improved and offers better convenient while operator get on and off the cabin.



Fine Swing Control Option

This option enables smooth movement at the start and stop of swing operation (Cushion Swing). In addition, it reduces the shaking of the weight when lifting operation(Free Swing).

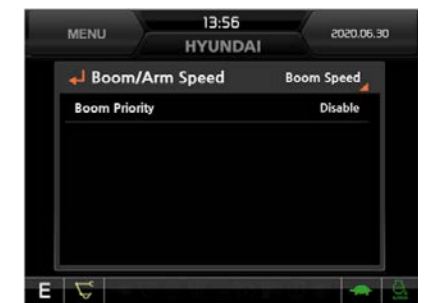
OME(Owner Menu Editing)

The Owner of machine can restrict operators access the set of functions. In the menu, Owner can set the list of the function to lock or unlock it. It is necessary to input the password to access the set of function.



Boom/Arm Speed

Boom-up speed compared to swing speed can be adjusted by activating/deactivating boom priority function. Arm-in speed can be also tuned by activating/deactivating arm regeneration function.

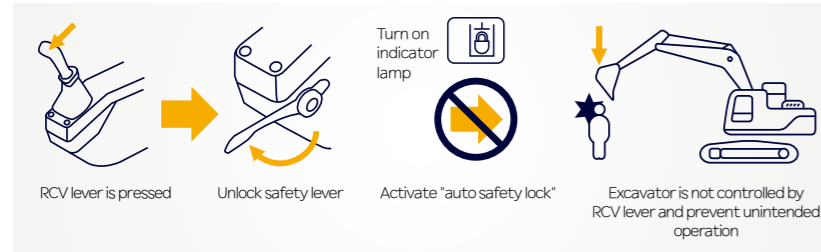




HX145A LCR with advanced technology ensures our safety on a construction site. //

Auto Safety Lock **NEW**

It prevents unintended operation. If operator unlock safety lever when RCV lever is pressed, excavator is not controlled by RCV lever.



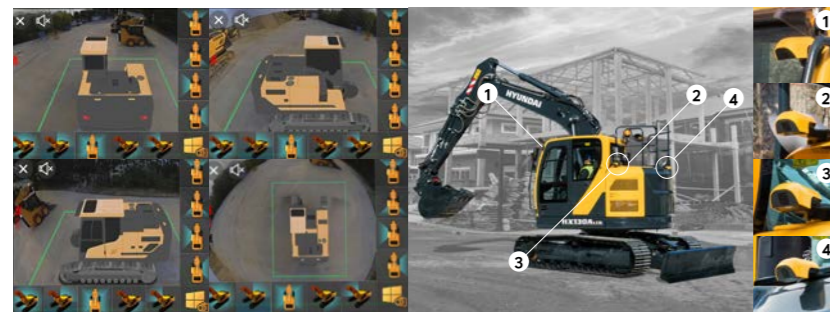
Electronic Swing Parking System **NEW**

An electronic valve and control system is applied to improve safety and utilization. The opening and closing time of the swing brake valve is controlled according to the sensing and control system.

AAVM(Advanced Around View Monitoring) Camera System **Option**

HX A Series has a state-of-the-art AAVM video camera system to secure field of vision for operators in all directions, thereby preventing accidents. Operators can easily check the workplace in the front and rear and to the right and left.

- **AAVM**(Advanced Around View Monitoring) : Secure field of vision in all directions by ten views including 3D bird's eye view and 2D/4CH view.
- **IMOD**(Intelligent Moving Object Detection) : Inform when people or dangerous objects are detected within the range of operation(recognition distance : 5 m)



* Rear & RH view camera option is also available.

Seatbelt Warning Alarm

If the seatbelt is not buckled when the ignition key is turned, an alarm is triggered in intervals along with a continuous visual alert. This emphasises our priority for operator safety. Emergency Engine Stop Switch Manual engine stop switch behind the seat is used for emergency stop. It can be reached from outside of cabin.

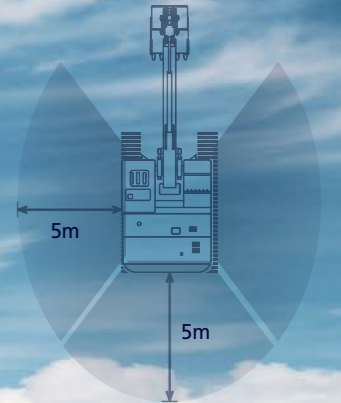
Emergency Engine Stop Switch

Manual engine stop switch behind the seat is used for emergency stop. It can be reached from outside of cabin.



THE ULTIMATE SAFE ENVIRONMENT

The true value of HX A Series lies in its durability. The robust frame structure and the attachments show the real value of HX A Series in tough working environments and promise higher productivity.



* AAVM (OPTION APPLIED)



* Photo may include optional equipment.



SERVICEABILITY AND TELEMATICS

IoT / ICT / AI-based digital technology.

Creating a smart construction site. Maximizes connectivity, productivity, and safety for successful businesses.



* Photo may include optional equipment.

Hi MATE

Option

IT'S CONVENIENT, EASY AND VALUABLE

Hi MATE Hyundai's newly developed remote management system, utilizes GPS-satellite technology to provide customers with the highest level of service and product support available. Hi MATE enables users to remotely evaluate machine performance, access diagnostic information, and verify machine locations at the touch of a button.

WHAT IS BENEFITS



Increase Productivity

It helps you operate machines in efficient. You can check the difference between total engine hours and actual working hours. See how productive your machines are and plan any required cost saving solutions. Hi MATE offers working information such as working / idling hours, fuel consumption and rate.



Convenient and Easy Monitoring

There is nothing much to do to monitor your machines. Just log on to the Hi MATE website or mobile application. Hi MATE allows you to watch your machines whenever and wherever you are.



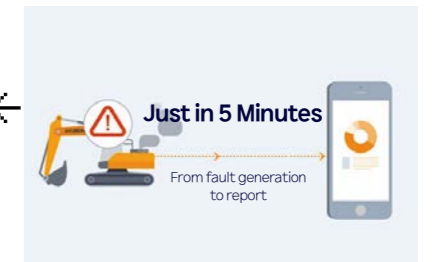
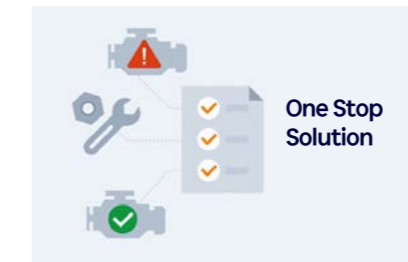
Security

Protect your machines from theft or unauthorized usage with Hi MATE. If the machine moves out of the Geofence boundary, you will get alerts.

ECD(Engine Connected Diagnostics) Option

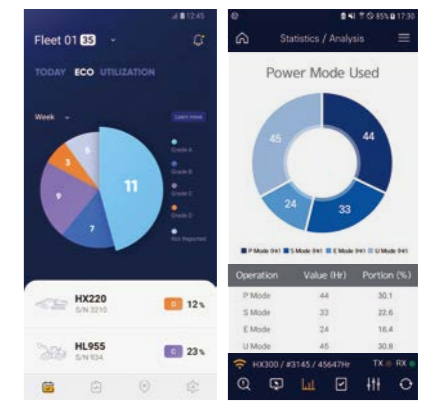
ECD will support the after sales technicians and dealers with a diagnostics report (via e-mail, mobile, app or Hi MATE) on the engine performance. This will help after sales technicians arrive on site with the necessary tools and parts to fix troubles in one visit. ECD is an integrated remote diagnostics service between Cummins cloud and Hi MATE cloud.

We are all connected



Mobile Fleet App. Option

The new Mobile App is optimized to fleet management. It provides productivity, health insights based on telematics technology and enables fleet owner just focus on most wanted equipment in view of economical usage, utilization, fault codes and maintenance. The new Mobile App sorts equipment in order of eco-index, utilization-index and fault code level automatically so that urgent equipment pops up automatically.



Hi MATE Fleet App

HCE-DT AIR App

HCE-DT Air NEW

HCE-DT Air connect you and your equipment wirelessly via smartphone and laptop right on site. You can diagnose root causes and troubleshoot for fault codes through the connection.

2x Longer Lasting Filter (1000hr)

The length of product life period is improved from 500 hours to 1,000hours. (When using CK-4 E/G Oil)

- Engine Oil
- Engine Oil Filter
- Pre-filter
- Fuel Filter



Improved Routine Maintenance

Easy access for maintenance means regular checks get done faster, giving you more uptime and reducing operating costs. Ground-line access to filters, lube fittings and master switch makes service more convenient on HX A Series.

HX145A LCR SPECIFICATIONS

Unit : mm (ft-in)

ENGINE	
Maker / Model	CUMMINS / F3.8
Type	4-cycle, turbocharged, charge air cooled, electronic controlled diesel engine
Gross Power	100 kW (134 HP) at 2,200 rpm
Net Power	98 kW (131 HP) at 2,200 rpm
Max. Power	100 kW (134 HP) at 2,200 rpm
Peak Torque	550 N · m (406 lb · ft) at 1,500 rpm
Displacement	3.8ℓ (229 cu in)

HYDRAULIC SYSTEM	
MAIN PUMP	
Type	Variable displacement tandem axis piston pumps
Max. Flow	2 X 127 l/min (33.5 U.S. gpm)
PILOT PUMP	
Type	Fixed displacement gear pump single stage
Max. Flow	29.3 ℓ /min (7.7 U.S. gpm)

HYDRAULIC MOTORS	
Travel	Variable displacement axial piston motor
Swing	Two fixed displacement axial piston motor

RELIEF VALVE SETTING	
Implement Circuits	350 kgf/cm ² (4,980 psi)
Travel	350 kgf/cm ² (4,980 psi)
Power Boost (Boom, Arm, Bucket)	380 kgf/cm ² (5,410 psi)
Swing Circuit	280 kgf/cm ² (3,990 psi)
Pilot Circuit	40 kgf/cm ² (569 psi)

HYDRAULIC CYLINDERS		
No. of Cylinder Bore X Stroke	Boom	2-∅105 × 1,085 mm
	Arm	1-∅115 × 1,108 mm
	Arm(2PCS)	1-∅115 × 1,138 mm
	Bucket	1-∅100 × 900 mm
	Blade	2-∅100 × 250 mm
	2PCS 1st	2-∅105 × 995 mm
2PCS 2nd	1-∅145 × 613 mm	

DRIVES & BRAKES		
Drive Method	Fully hydrostatic type	
Drive Motor	Axial piston motor, in-shoe design	
Reduction System	Planetary reduction gear	
	HX145A LCR	HX145A LCR HW
Max. Drawbar Pull	12,672 kgf (27,940 lbf)	16,717 kgf (36,850 lbf)
Max. Travel Speed (High / Low)	3.3 km/hr (2.1 mph) / 5.6 km/hr (3.5 mph)	2.5 km/hr (1.6 mph) / 4.4 km/hr (2.7 mph)
Gradeability	35° (70%)	
Parking Brake	Multi wet disc	

CONTROL	
Pilot pressure operated joysticks and pedals with detachable lever provide almost effortless and fatigueless operation.	
Pilot Control	Two joysticks with one safety lever (LH) : Swing and arm, (RH) : Boom and bucket
Traveling and Steering	Two levers with pedals
Engine Throttle	Electric, dial type

SWING SYSTEM	
Swing Motor	Fixed displacement axial piston motor
Swing Reduction	Planetary reduction gear
Swing Bearing Lubrication	Grease-bathed
Swing Brake	Multi wet disc
Swing Speed	11.4 rpm

SERVICE CAPACITIES		
	liter	US gal
Fuel Tank	210	55.5
Engine Coolant	24.5	6.47
Engine Oil	12	3.2
Swing Device	3.5	0.9
Final Drive	2.3	0.6
Hydraulic System (Including Tank)	180	47.6
Hydraulic Tank	96	25.4
DEF/AdBlue(R)	27	7.1

UNDERCARRIAGE		
The X-leg type center frame is integrally welded with reinforced box-section track frames. The undercarriage includes lubricated rollers, idlers, track adjusters with shock absorbing springs and sprockets, and a track chain with double or triple grouser shoes.		
Center Frame	X - Leg Type	
Track Frame	Pentagonal Box Type	
	HX145A LCR (D)	HX145A LCR HW
No. of Shoes on Each Side	47	47
No. of Carrier Roller	2 x 2	2 x 2
No. of Track Roller	2 x 7	2 x 7
No. of Rail Guard	2	Full Rail Guard

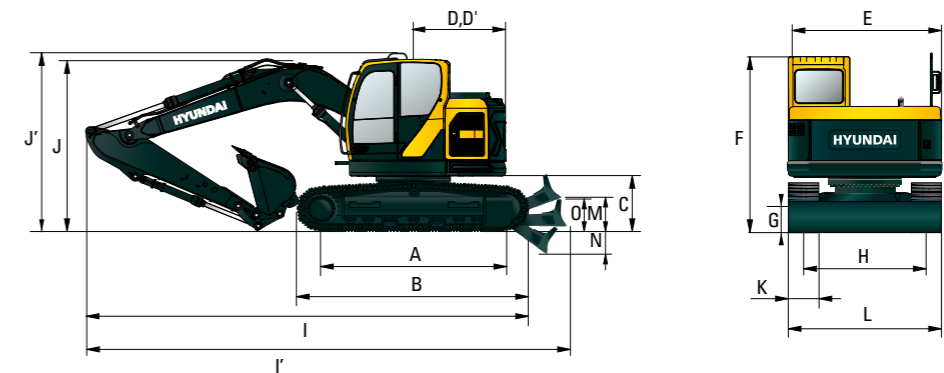
OPERATING WEIGHT (APPROXIMATE)		
Operating weight, including 4,600 mm (15' 1") boom, 2,500 mm (8' 2") arm, SAE heaped 0.59 m ³ (0.77 yd ³) bucket, lubricant, coolant, full fuel tank, full hydraulic tank, and all standard equipments.		
Shoes	Operating Weight	Ground Pressure
Type	Width mm(in)	kg (lb)

Triple Grouser	500 (20")	HX145A LCR	15,215 (33,540)	0.46 (6.49)
		HX145A LCR (Rubber Pad)	15,185 (33,480)	0.45 (6.37)
		HX145A LCRD	16,015 (35,310)	0.48 (6.83)
		HX145A LCRD (Rubber Pad)	15,985 (35,240)	0.47 (6.71)
	600 (24")	HX145A LCR	15,430 (34,020)	0.39 (5.49)
		HX145A LCR (Track Pad)	15,990 (35,250)	0.40 (5.62)
		HX145A LCRD	16,240 (35,800)	0.41 (5.77)
		HX145A LCR (Track Pad)	16,800 (37,040)	0.42 (5.90)
	700 (28")	HX145A LCR	15,650 (34,500)	0.34 (4.76)
		HX145A LCRD	16,465 (36,300)	0.35 (5.02)
	800 (32")	HX145A LCR HW	17,880 (39,420)	0.39 (5.52)
		HX145A LCR HW	18,120 (39,950)	0.34 (4.89)

HX145A LCR DIMENSIONS & WORKING RANGE

HX145A LCR / HX145A LCRD MONO BOOM DIMENSIONS

4.60 m (15' 1") BOOM and 2.10 m (6' 11"), 2.50 m (8' 2"), 3.00 m (9' 10") ARM



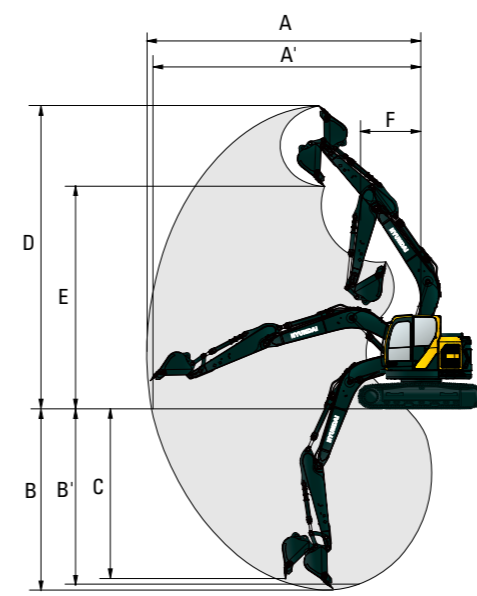
Unit : mm (ft-in)

A Tumbler Distance	3,120 (10' 3")	Boom Length		4,600 (15' 1")	
*B Overall length of crawler	3,842 (12' 7")	Arm Length	2,100 (6' 11")	2,500 (8' 2")	3,000 (9' 10")
*C Ground clearance of counterweight	905 (3' 0")	*I Overall Length	7,330 (24' 1")	7,320 (24' 0")	7,435 (24' 5")
D Tail swing radius	1,530 (5' 0")	*I Overall length (W/Dozer)	7,765 (25' 6")	7,755 (25' 5")	7,870 (25' 10")
**D' Rear-end length	1,530 (5' 0")	*J Overall height of boom	2560 (8' 5")	2,730 (8' 11")	3,165 (10' 5")
E Overall width of upperstructure	2,485 (8' 2")	K Track shoe width	500 (20")	600 (24")	700 (28")
*F Overall height of cap	2,820 (9' 3")	L Overall width	2,490 (8' 2")	2,590 (8' 6")	2,690 (8' 10")
*G Min. ground clearance	270 (0' 11")	***M Ground clearance of blade up	425 (1' 5")		
H Track gauge	1,990 (6' 6")	***N Depth of blade down	430 (1' 5")		
*J' Overall height guardrail	3,090 (10' 2")	***O Height of blade	575 (1' 11")		

* This figure includes the size of grousers.
 ** STD counterweight.
 *** With dozer blade.

HX145A LCR / HX145A LCRD MONO BOOM WORKING RANGE

Unit : mm (ft-in)

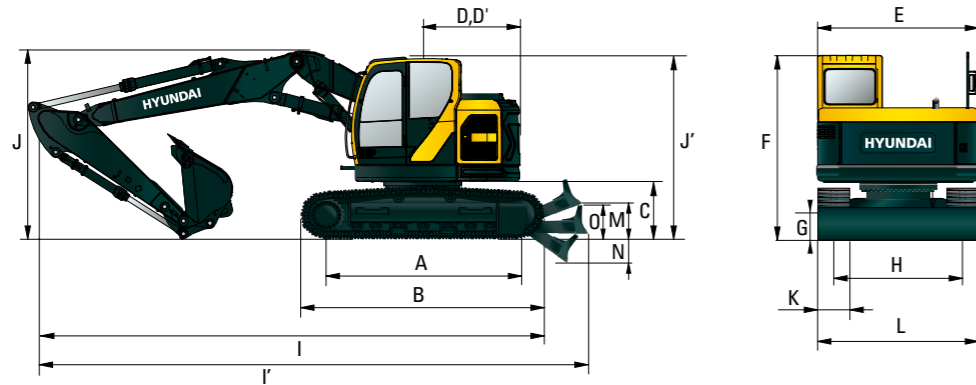


Boom Length	4,600 (15' 1")		
Arm Length	2,100 (6' 11")	2,500 (8' 2")	3,000 (9' 10")
A Max. digging reach	7,770 (25' 6")	8,240 (27' 0")	8,620 (28' 4")
A' Max. digging reach on ground	7,620 (25' 0")	8,100 (26' 7")	8,490 (27' 10")
B Max. digging depth	4,820 (15' 10")	5,230 (17' 2")	5,720 (18' 9")
B' Max. Digging Depth (8' Level)	4,570 (15' 0")	5,020 (16' 6")	5,540 (18' 2")
C Max. vertical digging depth	4,010 (13' 2")	4,720 (15' 6")	5,000 (16' 5")
D Max. digging height	8,695 (28' 6")	9,205 (30' 2")	9,395 (30' 10")
E Max. dumping height	6,315 (20' 9")	6,790 (22' 3")	7,000 (23' 0")
F Min. swing radius	1,835 (6' 0")	2,000 (6' 7")	2,350 (7' 9")

DIMENSIONS & WORKING RANGE

HX145A LCR / HX145A LCRD 2-PIECE BOOM DIMENSIONS

4.9 m (16' 1") 2-Piece BOOM and 2.1 m (6' 11"), 2.5 m (8' 2") ARM



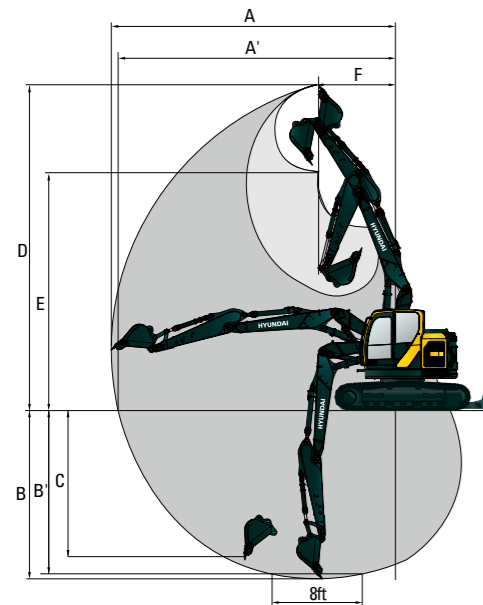
Unit : mm (ft-in)

A Tumbler Distance	3,120 (10' 3")	Boom Length	4,900 (16' 1")		
*B Overall length of crawler	3,842 (12' 7")	Arm Length	2,100 (6' 11")	2,500 (8' 2")	
*C Ground clearance of counterweight	905 (3' 0")	*I Overall Length	7,310 (24' 0")	7,290 (23' 11")	
D Tail swing radius	1,530 (5' 0")	*I Overall length (W/Dozer)	7,645 (25' 1")	7,625 (25' 0")	
**D' Rear-end length	1,530 (5' 0")	*J Overall height of boom	2,660 (8' 9")	2,670 (8' 9")	
E Overall width of upperstructure	2,485 (8' 2")	K Track shoe width	500 (20")	600 (24")	700 (28")
*F Overall height of cap	2,820 (9' 3")	M Overall width	2,490 (8' 2")	2,590 (8' 6")	2,690 (8' 10")
*G Min. ground clearance	270 (0' 11")	***M Ground clearance of blade up	425 (1' 5")		
H Track gauge	1,990 (6' 6")	***N Depth of blade down	430 (1' 5")		
*J' Overall height guardrail	3,090 (10' 2")	***O Height of blade	575 (1' 11")		

* This figure includes the size of grousers.
 ** STD counterweight.
 *** With dozer blade.

HX145A LCR / HX145A LCRD 2-PIECE BOOM WORKING RANGE

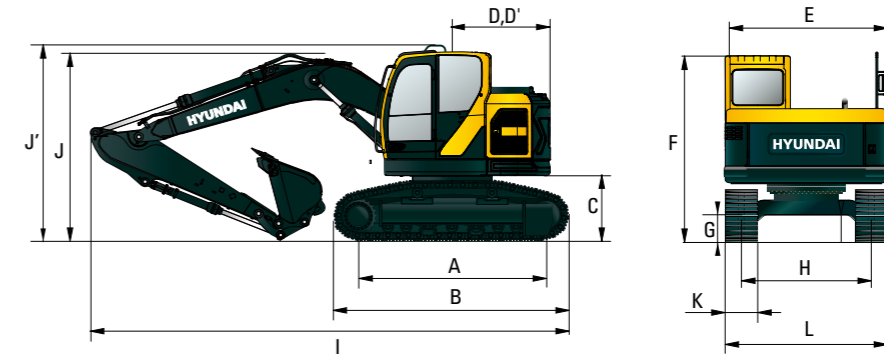
Unit : mm (ft-in)



Boom Length	4,900 (16' 1")	
Arm Length	2,100 (6' 11")	2,500 (8' 2")
A Max. Digging Reach	8,270 (27' 2")	8,680 (28' 6")
A' Max. Digging Reach on Ground	8,130 (26' 8")	8,540 (28' 0")
B Max. Digging Depth	5,190 (17' 0")	5,600 (18' 4")
B' Max. Digging Depth (8' Level)	5,080 (16' 8")	5,490 (18' 0")
C Max. Vertical Wall Digging Depth	4,540 (14' 11")	5,000 (16' 5")
D Max. Digging Height	9,370 (30' 9")	9,750 (32' 0")
E Max. Dumping Height	6,880 (22' 7")	7,260 (23' 10")
F Min. Swing Radius	2,310 (7' 7")	2,250 (7' 5")

HX145A LCR HW MONO BOOM DIMENSIONS

4.60 m (15' 1") BOOM and 2.10 m (6' 11"), 2.50 m (8' 2"), 3.00 m (9' 10") ARM



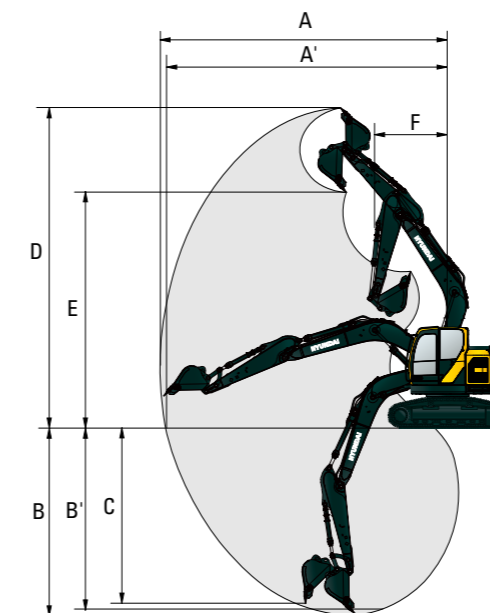
Unit : mm (ft-in)

A Tumbler Distance	3,030 (9' 11")	Boom Length	4,600 (15' 1")		
*B Overall Length of Crawler	3,820 (12' 6")	Arm Length	2,100 (6' 11")	2,500 (8' 2")	3,000 (9' 10")
*C Ground Clearance of Counter Weight	1195 (3' 11")	I Overall Length	7,285 (22' 11")	7,315 (22' 10")	7,370 (22' 7")
**D Tail Swing Radius	1,530 (5' 0")	*J Overall Height of Boom	2,595 (9' 8")	2,750 (9' 7")	3125 (10' 9")
**D' Rear-End Length	1,530 (5' 0")	K Track Shoe Width	700 (28")	800 (32")	
E Overall Width of Upper Structure	2,485 (8' 2")	L Overall Width	2,740 (9' 0")	2,840 (9' 4")	
*F Overall Height of Cab	3,155 (10' 4")				
*G Min. Ground Clearance	605 (2' 0")				
H Track gauge	2,040 (6' 8")				
*J' Overall Height of Guardrail	3,380 (11' 1")				

* This figure includes the size of grousers.
 ** STD counterweight.

HX145A LCR HW MONO BOOM WORKING RANGE

Unit : mm (ft-in)

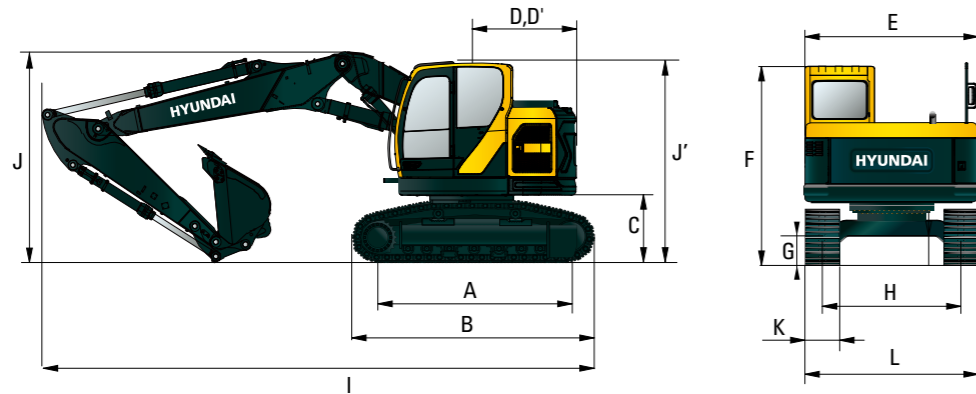


Boom Length	4,600 (15' 1")		
Arm Length	2,100 (6' 11")	2,500 (8' 2")	3,000 (9' 10")
A Max. Digging Reach	7,770 (25' 6")	8,240 (27' 0")	8,620 (28' 3")
A' Max. Digging Reach on Ground	7,560 (24' 10")	8,040 (26' 5")	8,435 (27' 8")
B Max. Digging Depth	4,550 (14' 11")	4,950 (16' 3")	5,450 (17' 11")
B' Max. Digging Depth (8' Level)	4,290 (14' 1")	4,750 (15' 7")	5,270 (17' 3")
C Max. Vertical Wall Digging Depth	3,740 (12' 3")	4,450 (14' 7")	4,730 (15' 6")
D Max. Digging Height	8,970 (29' 5")	9,480 (31' 1")	9,670 (31' 9")
E Max. Dumping Height	6,590 (21' 7")	7,060 (23' 2")	7,275 (23' 10")
F Min. Swing Radius	1,835 (6' 0")	2,000 (6' 6")	2,350 (7' 8")

DIMENSIONS & WORKING RANGE

HX145A CR HW 2-PIECE BOOM DIMENSIONS

4.9 m (16' 1") 2-Piece BOOM and 2.1 m (6' 11"), 2.5 m (8' 2") ARM



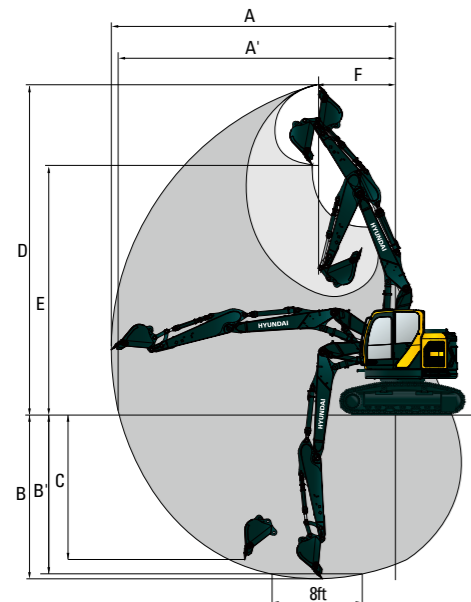
Unit : mm (ft-in)

A Tumbler Distance	3,030 (9' 11")	Boom Length	4,900 (16' 1")	
*B Overall Length of Crawler	3,820 (12' 6")	Arm Length	2,100 (6' 11")	2,500 (8' 2")
*C Ground Clearance of Counter Weight	1,195 (3' 11")	I Overall Length	7,310 (24' 0")	7,290 (23' 11")
**D Tail Swing Radius	1,530 (5' 0")	*J Overall Height of Boom	2,785 (9' 2")	2,790 (9' 2")
**D' Rear-End Length	1,530 (5' 0")	K Track shoe width	700 (28")	800 (32")
E Overall Width of Upper Structure	2,485 (8' 2")	L Overall Width	2,740 (9' 0")	2,840 (9' 4")
*F Overall Height of Cab	3,155 (10' 4")			
*G Min. Ground Clearance	605 (2' 0")			
H Track gauge	2,040 (6' 8")			
*J Overall Height of Guardrail	3,380 (11' 1")			

* This figure includes the size of grouser.
** STD counterweight.

HX145A LCR HW 2-PIECE BOOM WORKING RANGE

Unit : mm (ft-in)



Boom Length	4,900 (16' 1")	
Arm Length	2,100 (6' 11")	2,500 (8' 2")
A Max. Digging Reach	8,270 (27' 2")	8,680 (28' 6")
A' Max. Digging Reach on Ground	8,130 (26' 8")	8,540 (28' 0")
B Max. Digging Depth	5,190 (17' 0")	5,600 (18' 4")
B' Max. Digging Depth (8' Level)	5,080 (16' 8")	5,490 (18' 0")
C Max. Vertical Wall Digging Depth	4,540 (14' 11")	5,000 (16' 5")
D Max. Digging Height	9,370 (30' 9")	9,750 (32' 0")
E Max. Dumping Height	6,880 (22' 7")	7,260 (23' 10")
F Min. Swing Radius	2,310 (7' 7")	2,250 (7' 5")

LIFTING CAPACITY

Rating over-front Rating over-side or 360 degree

HX145A LCR MONO BOOM

4.60 m (15' 1") boom, 2.10 m (6' 11") arm equipped with 2,800kg counter weight and 600mm (24") Triple grouser shoe without Dozer.

Lift-point height (m/ft)	Lift-point radius								At max. reach		
	1.5 m (4.9 ft)		3.0 m (9.8 ft)		4.5 m (14.8 ft)		6.0 m (19.7 ft)		Capacity	Reach	
6.0m 19.7ft									*3,020	*3,020	4.72
4.5m 14.8ft			*5,620	*5,620	*4,910	3,710			*2,830	2,450	5.81
3.0m 9.8ft			*8,090	6,540	*5,560	3,520	3,750	2,280	*2,870	2,070	6.37
1.5m 4.9ft			*17,840	14,420	*12,260	7,760	8,270	5,030	*6,330	4,560	(20.9)
0.0m 0.0ft					5,700	3,310	3,660	2,200	*3,110	1,930	6.55
-1.5m -4.9ft					12,570	7,300	8,070	4,850	*6,860	4,250	(21.5)
-3.0m -9.8ft			*7,250	5,730	5,540	3,170	3,590	2,140	3,300	1,970	6.37
			*15,980	12,630	12,210	6,990	7,910	4,720	7,280	4,340	(20.9)
			*8,140	5,750	5,500	3,130			3,770	2,230	5.80
			*17,950	12,680	12,130	6,900			8,310	4,920	(19.0)
			*5,710	*5,710	*3,940	3,220			*3,630	3,040	4.70
			*12,590	*12,590	*8,690	7,100			*8,000	6,700	(15.4)

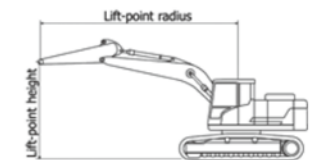
4.60 m (15' 1") boom, 2.10 m (6' 11") arm equipped with 2,800kg counter weight and 600mm (24") Triple grouser shoe Dozer up.

Lift-point height (m/ft)	Lift-point radius								At max. reach		
	1.5 m (4.9 ft)		3.0 m (9.8 ft)		4.5 m (14.8 ft)		6.0 m (19.7 ft)		Capacity	Reach	
6.0m 19.7ft									*3,020	*3,020	4.72
4.5m 14.8ft			*5,620	*5,620	*4,910	3,950			*2,830	2,630	5.81
3.0m 9.8ft			*8,090	6,990	*5,560	3,770	3,830	2,450	*2,870	2,230	6.37
1.5m 4.9ft			*17,840	15,410	*12,260	8,310	8,440	5,400	*6,330	4,920	(20.9)
0.0m 0.0ft					5,810	3,550	3,740	2,370	*3,110	2,090	6.55
-1.5m -4.9ft					12,810	7,830	8,250	5,220	*6,860	4,610	(21.5)
-3.0m -9.8ft			*7,250	6,170	5,650	3,420	3,670	2,310	3,370	2,130	6.37
			*15,980	13,600	12,460	7,540	8,090	5,090	7,430	4,700	(20.9)
			*8,140	6,190	5,610	3,380			3,850	2,410	5.80
			*17,950	13,650	12,370	7,450			8,490	5,310	(19.0)
			*5,710	*5,710	*3,940	3,470			*3,630	3,270	4.70
			*12,590	*12,590	*8,690	7,650			*8,000	7,210	(15.4)

4.60 m (15' 1") boom, 2.10 m (6' 11") arm equipped with 2,800kg counter weight and 600mm (24") Triple grouser shoe Dozer down.

Lift-point height (m/ft)	Lift-point radius								At max. reach		
	1.5 m (4.9 ft)		3.0 m (9.8 ft)		4.5 m (14.8 ft)		6.0 m (19.7 ft)		Capacity	Reach	
7.5m 24.6ft									*4,670	*4,670	2.66
6.0m 19.7ft			*4,980	*4,980	*4,410	4,010			*3,370	*3,370	4.83
4.5m 14.8ft			*10,980	*10,980	*9,720	8,840			*7,430	*7,430	(15.9)
3.0m 9.8ft			*5,280	*5,280	*4,770	3,960			*3,070	2,550	5.91
1.5m 4.9ft			*11,640	*11,640	*10,520	8,730			*6,770	5,620	(19.4)
0.0m 0.0ft			*7,880	7,010	*5,440	3,770	*4,450	2,440	*3,040	2,160	6.47
-1.5m -4.9ft			*17,370	15,450	*11,990	8,310	*9,810	5,380	*6,700	4,760	(21.2)
-3.0m -9.8ft					*6,150	3,540	*4,660	2,360	*3,210	2,030	6.65
					*13,560	7,800	*10,270	5,200	*7,080	4,480	(21.8)
			*6,200	6,140	*6,370	3,400	*4,630	2,290	*3,610	2,060	6.47
			*13,670	13,540	*14,040	7,500	*10,210	5,050	*7,960	4,540	(21.2)
			*5,160	*5,160	*8,280	6,150	*5,830	3,350	*4,010	2,330	5.92
			*11,380	*11,380	*18,250	13,560	*12,850	7,390	*8,840	5,140	(19.4)
			*6,010	*6,010	*4,130	3,430			*3,520	3,110	4.86
			*13,250	*13,250	*9,110	7,560			*7,760	6,860	(15.9)

- Lifting capacity are based on ISO 10567.
- Lifting capacity of HX Series does not exceed 75% of tipping load with the machine on firm, level ground or 87% of full hydraulic capacity.
- The Lift-point is bucket pivot mounting pin on the arm (without bucket mass).
- (*) indicates load limited by hydraulic capacity.



LIFTING CAPACITY

Rating over-front Rating over-side or 360 degree

HX145A LCR MONO BOOM

4.60 m (15' 1") boom, 2.10 m (6' 11") arm equipped with 3,300kg counter weight and 600mm (24") Triple grouser shoe without Dozer.

Lift-point height (m/ft)	Lift-point radius								At max. reach		
	1.5 m (4.9 ft)		3.0 m (9.8 ft)		4.5 m (14.8 ft)		6.0 m (19.7 ft)		Capacity	Reach	
6.0m 19.7ft	kg lb			*3,710 *8,180	*3,710 *8,180				*3,020 *6,660	*3,020 *6,660	4.72 (15.5)
4.5m 14.8ft	kg lb		*5,620 *12,390	*5,620 *12,390	*4,910 *10,820	3,960 8,730			*2,830 *6,240	2,640 5,820	5.81 (19.1)
3.0m 9.8ft	kg lb		*8,090 *17,840	7,000 15,430	*5,560 *12,260	3,780 8,330	3,990 8,800	2,460 5,420	*2,870 *6,330	2,240 4,940	6.37 (20.9)
1.5m 4.9ft	kg lb				6,060 13,360	3,560 7,850	3,900 8,600	2,380 5,250	*3,110 *6,860	2,090 4,610	6.55 (21.5)
0.0ft -1.5m	kg lb		*7,250 *15,980	6,190 13,650	5,900 13,010	3,430 7,560	3,830 8,440	2,310 5,090	*3,520 7,760	2,140 4,720	6.37 (20.9)
-4.9ft -3.0m	kg lb		*8,140 *17,950	6,210 13,690	*5,790 *12,760	3,390 7,470			4,020 8,860	2,420 5,340	5.80 (19.0)
-9.8ft -9.8ft	kg lb		*5,710 *12,590	*3,940 *12,590	*3,940 *8,690	3,470 7,650			*3,630 *8,000	3,280 7,230	4.70 (15.4)

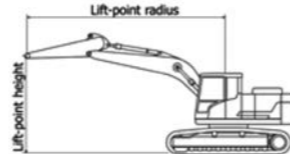
4.60 m (15' 1") boom, 2.10 m (6' 11") arm equipped with 3,300kg counter weight and 600mm (24") Triple grouser shoe Dozer up.

Lift-point height (m/ft)	Lift-point radius								At max. reach		
	1.5 m (4.9 ft)		3.0 m (9.8 ft)		4.5 m (14.8 ft)		6.0 m (19.7 ft)		Capacity	Reach	
6.0m 19.7ft	kg lb			*3,710 *8,180	*3,710 *8,180				*3,020 *6,660	*3,020 *6,660	4.72 (15.5)
4.5m 14.8ft	kg lb		*5,620 *12,390	*5,620 *12,390	*4,910 *10,820	4,210 9,280			*2,830 *6,240	2,820 6,220	5.81 (19.1)
3.0m 9.8ft	kg lb		*8,090 *17,840	7,440 16,400	*5,560 *12,260	4,030 8,880	4,070 8,970	2,630 5,800	*2,870 *6,330	2,400 5,290	6.37 (20.9)
1.5m 4.9ft	kg lb				6,170 13,600	3,810 8,400	3,980 8,770	2,550 5,620	*3,110 *6,860	2,250 4,960	6.55 (21.5)
0.0m 0.0ft	kg lb		*7,250 *15,980	6,630 14,620	6,010 13,250	3,670 8,090	3,910 8,620	2,490 5,490	3,590 7,910	2,300 5,070	6.37 (20.9)
-1.5m -4.9ft	kg lb		*8,140 *17,950	6,650 14,660	*5,790 *12,760	3,640 8,020			4,100 9,040	2,600 5,730	5.80 (19.0)
-3.0m -9.8ft	kg lb		*5,710 *12,590	*5,710 *12,590	*3,940 *8,690	3,720 8,200			*3,630 *8,000	3,520 7,760	4.70 (15.4)

4.60 m (15' 1") boom, 2.10 m (6' 11") arm equipped with 3,300kg counter weight and 600mm (24") Triple grouser shoe Dozer down.

Lift-point height (m/ft)	Lift-point radius								At max. reach		
	1.5 m (4.9 ft)		3.0 m (9.8 ft)		4.5 m (14.8 ft)		6.0 m (19.7 ft)		Capacity	Reach	
6.0m 19.7ft	kg lb			*3,710 *8,180	*3,710 *8,180				*3,020 *6,660	*3,020 *6,660	4.72 (15.5)
4.5m 14.8ft	kg lb		*5,620 *12,390	*5,620 *12,390	*4,910 *10,820	4,210 9,280			*2,830 *6,240	2,820 6,220	5.81 (19.1)
3.0m 9.8ft	kg lb		*8,090 *17,840	7,440 16,400	*5,560 *12,260	4,030 8,880	*4,520 *9,960	2,630 5,800	*2,870 *6,330	2,400 5,290	6.37 (20.9)
1.5m 4.9ft	kg lb				*6,240 *13,760	3,810 8,400	*4,710 *10,380	2,550 5,620	*3,110 *6,860	2,250 4,960	6.55 (21.5)
0.0m 0.0ft	kg lb		*7,250 *15,980	6,630 14,620	*6,400 *14,110	3,670 8,090	*4,650 *10,250	2,490 5,490	*3,630 *8,000	2,300 5,070	6.37 (20.9)
-1.5m -4.9ft	kg lb		*8,140 *17,950	6,650 14,660	*5,790 *12,760	3,640 8,020			*4,140 *9,130	2,600 5,730	5.80 (19.0)
-3.0m -9.8ft	kg lb		*5,710 *12,590	*5,710 *12,590	*3,940 *8,690	3,720 8,200			*3,630 *8,000	3,520 7,760	4.70 (15.4)

- 1 | Lifting capacity are based on ISO 10567.
- 2 | Lifting capacity of HX Series does not exceed 75% of tipping load with the machine on firm, level ground or 87% of full hydraulic capacity.
- 3 | The Lift-point is bucket pivot mounting pin on the arm (without bucket mass).
- 4 | (*) indicates load limited by hydraulic capacity.



Rating over-front Rating over-side or 360 degree

HX145A LCR MONO BOOM

4.60 m (15' 1") boom, 2.50 m (8' 2") arm equipped with 2,800kg counter weight and 600mm (24") Triple grouser shoe without Dozer.

Lift-point height (m/ft)	Lift-point radius								At max. reach		
	1.5 m (4.9 ft)		3.0 m (9.8 ft)		4.5 m (14.8 ft)		6.0 m (19.7 ft)		Capacity	Reach	
7.5m 24.6ft	kg lb								*2,780 *6,130	*2,780 *6,130	3.54 (11.6)
6.0m 19.7ft	kg lb					*3,640 *8,020	*3,640 *8,020		*2,180 *4,810	*2,180 *4,810	5.35 (17.6)
4.5m 14.8ft	kg lb			*3,990 *8,800	*3,990 *8,800	*4,250 *9,370	3,750 8,270	*3,090 *6,810	2,350 5,180	*2,020 *4,450	6.33 (20.8)
3.0m 9.8ft	kg lb			*7,380 *16,270	6,710 14,790	*5,270 *11,620	3,560 7,850	3,770 8,310	2,290 5,050	*2,010 *4,430	6.85 (22.5)
1.5m 4.9ft	kg lb				*8,750 *19,290	6,030 13,290	5,730 12,630	3,330 7,340	3,670 8,090	2,200 4,850	7.02 (23.0)
0.0m 0.0ft	kg lb				*7,040 *15,520	5,740 12,650	5,540 12,210	3,170 6,990	*2,780 *5,220	2,120 3,900	6.85 (22.5)
-1.5m -4.9ft	kg lb	*4,910 *10,820	*4,910 *10,820		*8,720 *19,220	5,710 12,590	5,470 12,060	3,110 6,860	3,560 7,850	2,100 4,630	6.32 (20.8)
-3.0m -9.8ft	kg lb				*6,600 *14,550	5,820 12,830	*4,620 *10,190	3,160 6,970	*3,430 *7,560	2,520 5,560	5.34 (17.5)

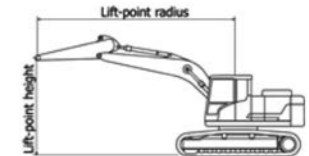
4.60 m (15' 1") boom, 2.50m (8' 2") arm equipped with 2,800kg counter weight and 600mm (24") Triple grouser shoe Dozer up.

Lift-point height (m/ft)	Lift-point radius								At max. reach		
	1.5 m (4.9 ft)		3.0 m (9.8 ft)		4.5 m (14.8 ft)		6.0 m (19.7 ft)		Capacity	Reach	
7.5m 24.6ft	kg lb								*2,780 *6,130	*2,780 *6,130	3.54 (11.6)
6.0m 19.7ft	kg lb					*3,640 *8,020	*3,640 *8,020		*2,180 *4,810	*2,180 *4,810	5.35 (17.6)
4.5m 14.8ft	kg lb			*3,990 *8,800	*3,990 *8,800	*4,250 *9,370	4,000 8,820	*3,090 *6,810	2,520 5,560	*2,020 *4,450	6.33 (20.8)
3.0m 9.8ft	kg lb			*7,380 *16,270	7,150 15,760	*5,260 *11,600	3,800 8,380	3,840 8,470	2,460 5,420	*2,010 *4,430	6.85 (22.5)
1.5m 4.9ft	kg lb				*8,750 *19,290	6,460 14,240	5,840 12,870	3,570 7,870	3,730 8,220	2,370 5,220	7.02 (23.0)
0.0m 0.0ft	kg lb				*7,040 *15,520	6,160 13,580	5,640 12,430	3,410 7,520	3,650 8,050	2,290 5,050	6.85 (22.5)
-1.5m -4.9ft	kg lb	*4,910 *10,820	*4,910 *10,820		*8,690 *19,160	6,130 13,510	5,570 12,280	3,350 7,390	3,620 7,980	2,260 4,980	6.32 (20.8)
-3.0m -9.8ft	kg lb				*6,570 *14,480	6,230 13,730	*4,600 *10,140	3,390 7,470	*3,410 *7,520	2,710 5,970	5.34 (17.5)

4.60 m (15' 1") boom, 2.50 m (8' 2") arm equipped with 2,800kg counter weight and 600mm (24") Triple grouser shoe Dozer down.

Lift-point height (m/ft)	Lift-point radius								At max. reach		
	1.5 m (4.9 ft)		3.0 m (9.8 ft)		4.5 m (14.8 ft)		6.0 m (19.7 ft)		Capacity	Reach	
7.5m 24.6ft	kg lb								*2,780 *6,130	*2,780 *6,130	3.54 (11.6)
6.0m 19.7ft	kg lb					*3,640 *8,020	*3,640 *8,020		*2,180 *4,810	*2,180 *4,810	5.35 (17.6)
4.5m 14.8ft	kg lb			*3,990 *8,800	*3,990 *8,800	*4,250 *9,370	4,000 8,820	*3,090 *6,810	2,520 5,560	*2,020 *4,450	6.33 (20.8)
3.0m 9.8ft	kg lb			*7,380 *16,270	7,150 15,760	*5,260 *11,600	3,800 8,380	*4,330 *9,550	2,460 5,420	*2,010 *4,430	6.85 (22.5)
1.5m 4.9ft	kg lb				*8,750 *19,290	6,460 14,240	*6,050 *13,340	3,570 7,870	*4,600 *10,140	2,370 5,220	7.02 (23.0)
0.0m 0.0ft	kg lb				*7,040 *15,520	6,160 13,580	*6,380 *14,070	3,410 7,520	*4,670 *10,300	2,290 5,050	6.85 (22.5)
-1.5m -4.9ft	kg lb	*4,910 *10,820	*4,910 *10,820		*8,690 *19,160	6,130 13,510	*5,990 *13,210	3,350 7,390	*4,210 *9,280	2,260 4,980	6.32 (20.8)
-3.0m -9.8ft	kg lb				*6,570 *14,480	6,230 13,730	*4,600 *10,140	3,390 7,470	*3,410 *7,520	2,710 5,970	5.34 (17.5)

- 1 | Lifting capacity are based on ISO 10567.
- 2 | Lifting capacity of HX Series does not exceed 75% of tipping load with the machine on firm, level ground or 87% of full hydraulic capacity.
- 3 | The Lift-point is bucket pivot mounting pin on the arm (without bucket mass).
- 4 | (*) indicates load limited by hydraulic capacity.



LIFTING CAPACITY

Rating over-front Rating over-side or 360 degree

HX145A LCR MONO BOOM

4.60 m (15' 1") boom, 2.50 m (8' 2") arm equipped with 3,300kg counter weight and 600mm (24") Triple grouser shoe without Dozer.

Lift-point height (m/ft)	Lift-point radius								At max. reach			
	1.5 m (4.9 ft)		3.0 m (9.8 ft)		4.5 m (14.8 ft)		6.0 m (19.7 ft)		Capacity	Reach		
7.5m 24.6ft	kg lb								*2,780 *6,130	*2,780 *6,130	3.54 (11.6)	
6.0m 19.7ft	kg lb			*3,640 *8,020	*3,640 *8,020				*2,180 *4,810	*2,180 *4,810	5.35 (17.6)	
4.5m 14.8ft	kg lb		*3,990 *8,800	*3,990 *8,800	*4,250 *9,370	4,000 8,820	*3,090 *6,810	2,530 5,580	*2,020 *4,450	*2,020 *4,450	6.33 (20.8)	
3.0m 9.8ft	kg lb		*7,380 *16,270	7,160 15,790	*5,270 *11,620	3,820 8,420	4,010 8,840	2,470 5,450	*2,010 *4,430	2,000 4,410	6.85 (22.5)	
1.5m 4.9ft	kg lb		*8,750 *19,290	6,490 14,310	*6,060 *13,360	3,590 7,910	3,910 8,620	2,380 5,250	*2,120 *4,670	1,890 4,170	7.02 (23.0)	
0.0m 0.0ft	kg lb		*7,040 *15,520	6,200 13,670	5,900 13,010	3,430 7,560	3,820 8,420	2,300 5,070	*2,370 *5,220	1,920 4,230	6.85 (22.5)	
-1.5m -4.9ft	kg lb	*4,910 *10,820	*4,910 *10,820	*8,720 *19,220	6,170 13,600	5,840 12,870	3,370 7,430	3,800 8,380	2,280 5,030	*2,890 *6,370	2,130 4,700	6.32 (20.8)
-3.0m -9.8ft	kg lb			*6,600 *14,550	6,270 13,820	*4,620 *10,190	3,410 7,520		*3,430 *7,560	2,720 6,000	5.34 (17.5)	

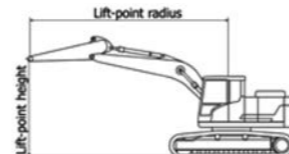
4.60 m (15' 1") boom, 2.50 m (8' 2") arm equipped with 3,300kg counter weight and 600mm (24") Triple grouser shoe Dozer up.

Lift-point height (m/ft)	Lift-point radius								At max. reach			
	1.5 m (4.9 ft)		3.0 m (9.8 ft)		4.5 m (14.8 ft)		6.0 m (19.7 ft)		Capacity	Reach		
7.5m 24.6ft	kg lb								*2,780 *6,130	*2,780 *6,130	3.54 (11.6)	
6.0m 19.7ft	kg lb			*3,640 *8,020	*3,640 *8,020				*2,180 *4,810	*2,180 *4,810	5.35 (17.6)	
4.5m 14.8ft	kg lb		*3,990 *8,800	*3,990 *8,800	*4,250 *9,370	4,000 8,820	*3,090 *6,810	2,700 5,950	*2,020 *4,450	*2,020 *4,450	6.33 (20.8)	
3.0m 9.8ft	kg lb		*7,380 *16,270	*7,380 *16,270	*5,260 *11,600	4,060 8,950	4,080 8,990	2,640 5,820	*2,010 *4,430	*2,010 *4,430	6.85 (22.5)	
1.5m 4.9ft	kg lb		*8,750 *19,290	6,910 15,230	*6,050 *13,340	3,830 8,440	3,970 8,750	2,540 5,600	*2,120 *4,670	2,020 4,450	7.02 (23.0)	
0.0m 0.0ft	kg lb		*7,040 *15,520	6,620 14,590	6,010 13,250	3,660 8,070	3,890 8,580	2,470 5,450	*2,370 *5,220	2,060 4,540	6.85 (22.5)	
-1.5m -4.9ft	kg lb	*4,910 *10,820	*4,910 *10,820	*8,690 *19,160	6,590 14,530	5,940 13,100	3,600 7,940	3,860 8,510	2,440 5,380	*2,890 *6,370	2,280 5,030	6.32 (20.8)
-3.0m -9.8ft	kg lb			*6,570 *14,480	6,570 14,480	*4,600 *10,140	3,650 8,050		*3,410 *7,520	2,910 6,420	5.34 (17.5)	

4.60 m (15' 1") boom, 2.50 m (8' 2") arm equipped with 3,300kg counter weight and 600mm (24") Triple grouser shoe Dozer down.

Lift-point height (m/ft)	Lift-point radius								At max. reach			
	1.5 m (4.9 ft)		3.0 m (9.8 ft)		4.5 m (14.8 ft)		6.0 m (19.7 ft)		Capacity	Reach		
7.5m 24.6ft	kg lb								*1,870 *4,120	*1,870 *4,120	3.90 (12.8)	
6.0m 19.7ft	kg lb			*2,840 *6,260	*2,840 *6,260				*1,530 *3,370	*1,530 *3,370	5.60 (18.4)	
4.5m 14.8ft	kg lb		*3,430 *7,560	*3,430 *7,560	*3,430 *7,560	3,430 7,560	*2,530 *5,580	2,500 5,510	*1,450 *3,200	*1,450 *3,200	6.54 (21.5)	
3.0m 9.8ft	kg lb		*6,350 *14,000	*6,350 *14,000	*4,660 *10,270	3,860 8,510	*3,570 *7,870	2,410 5,310	*1,480 *3,260	*1,480 *3,260	7.05 (23.1)	
1.5m 4.9ft	kg lb		*8,650 *19,070	6,700 14,770	*5,500 *12,130	3,590 7,910	*4,180 *9,220	2,290 5,050	*1,610 *3,550	*1,610 *3,550	7.20 (23.6)	
0.0m 0.0ft	kg lb		*8,650 *19,070	6,250 13,780	*5,980 *13,180	3,370 7,430	*4,350 *9,590	2,190 4,830	*1,890 *4,170	1,710 3,770	7.04 (23.1)	
-1.5m -4.9ft	kg lb	*5,020 *11,070	*5,020 *11,070	*8,700 *19,180	6,160 13,580	*5,790 *12,760	3,280 7,230	*4,090 *9,020	2,150 4,740	*2,440 *5,380	1,900 4,190	6.53 (21.4)
-3.0m -9.8ft	kg lb			*7,890 *17,390	*6,910 *15,230	*4,730 *10,430	3,300 7,280		*3,410 *7,520	2,420 5,340	5.58 (18.3)	

- 1 | Lifting capacity are based on ISO 10567.
- 2 | Lifting capacity of HX Series does not exceed 75% of tipping load with the machine on firm, level ground or 87% of full hydraulic capacity.
- 3 | The Lift-point is bucket pivot mounting pin on the arm (without bucket mass).
- 4 | (*) indicates load limited by hydraulic capacity.



Rating over-front Rating over-side or 360 degree

HX145A LCR MONO BOOM

4.60 m (15' 1") boom, 3.00 m (9' 10") arm equipped with 2,800kg counter weight and 600mm (24") Triple grouser shoe without Dozer.

Lift-point height (m/ft)	Lift-point radius										At max. reach			
	1.5 m (4.9 ft)		3.0 m (9.8 ft)		4.5 m (14.8 ft)		6.0 m (19.7 ft)		7.5 m (24.6 ft)		Capacity	Reach		
7.5m 24.6ft	kg lb											*2,450 *5,400	*2,450 *5,400	4.26 (14.0)
6.0m 19.7ft	kg lb					*3,290 *7,250	*3,290 *7,250					*2,070 *4,560	*2,070 *4,560	5.85 (19.2)
4.5m 14.8ft	kg lb					*3,580 *7,890	*3,580 *7,890	*3,180 *7,010	2,400 5,290			*1,960 *4,320	*1,960 *4,300	6.76 (22.2)
3.0m 9.8ft	kg lb			*5,700 *12,570	*5,700 *12,570	*4,850 *10,690	3,630 8,000	3,800 8,380	2,320 5,110			*1,980 *4,370	1,700 3,750	7.25 (23.8)
1.5m 4.9ft	kg lb			*8,880 *19,580	6,180 13,620	*5,760 *12,700	3,370 7,430	3,680 8,110	2,210 4,870			*2,100 *4,630	1,600 3,530	7.40 (24.3)
0.0m 0.0ft	kg lb			*8,300 *18,300	5,740 12,650	5,550 12,240	3,170 6,990	3,570 7,870	2,110 4,650			*2,360 *5,200	1,610 3,550	7.24 (23.8)
-1.5m -4.9ft	kg lb	*4,700 *10,360	*4,700 *10,360	*9,190 *20,260	6,180 13,390	5,550 11,970	3,320 7,320	3,590 7,910	2,230 4,920			*2,860 *6,310	1,910 4,210	6.75 (22.1)
-3.0m -9.8ft	kg lb			*7,750 *17,090	*7,750 *17,090	*7,480 *16,490	6,120 13,490	*5,180 *11,420	3,330 7,340			*3,530 *7,780	2,170 4,780	5.83 (19.1)

4.60 m (15' 1") boom, 3.00 m (9' 10") arm equipped with 2,800kg counter weight and 600mm (24") Triple grouser shoe Dozer up.

Lift-point height (m/ft)	Lift-point radius										At max. reach			
	1.5 m (4.9 ft)		3.0 m (9.8 ft)		4.5 m (14.8 ft)		6.0 m (19.7 ft)		7.5 m (24.6 ft)		Capacity	Reach		
7.5m 24.6ft	kg lb											*2,450 *5,400	*2,450 *5,400	4.26 (14.0)
6.0m 19.7ft	kg lb					*3,290 *7,250	*3,290 *7,250					*2,070 *4,560	*2,070 *4,560	5.85 (19.2)
4.5m 14.8ft	kg lb					*3,580 *7,890	*3,580 *7,890	*3,180 *7,010	2,570 5,670			*1,960 *4,320	*1,960 *4,320	6.76 (22.2)
3.0m 9.8ft	kg lb			*5,700 *12,570	*5,700 *12,570	*4,850 *10,690	3,870 8,530	3,880 8,550	2,490 5,490			*1,980 *4,370	1,830 4,030	7.25 (23.8)
1.5m 4.9ft	kg lb			*8,880 *19,580	6,620 14,590	*5,760 *12,700	3,620 7,980	3,750 8,270	2,380 5,250			*2,100 *4,630	1,730 3,810	7.40 (24.3)
0.0m 0.0ft	kg lb			*8,300 *18,300	6,180 13,620	5,660 12,480	3,410 7,520	3,650 8,050	2,280 5,030			*2,360 *5,200	1,750 3,860	7.24 (23.8)
-1.5m -4.9ft	kg lb	*4,700 *10,360	*4,700 *10,360	*9,190 *20,260	6,070 13,380	5,550 12,240	3,320 7,320	3,590 7,910	2,230 4,920			*2,860 *6,310	1,910 4,210	6.75 (22.1)
-3.0m -9.8ft	kg lb			*7,750 *17,090	*7,750 *17,090	*7,480 *16,490	6,120 13,490	*5,180 *11,420	3,330 7,340			*3,530 *7,780	2,350 5,180	5.83 (19.1)

4.60 m (15' 1") boom, 3.00 m (9' 10") arm equipped with 2,800kg counter weight and 600mm (24") Triple grouser shoe Dozer down.

Lift-point height (m/ft)	Lift-point radius										At max. reach			
	1.5 m (4.9 ft)		3.0 m (9.8 ft)		4.5 m (14.8 ft)		6.0 m (19.7 ft)		7.5 m (24.6 ft)		Capacity	Reach		
7.5m 24.6ft	kg lb											*2,450 *5,400	*2,450 *5,400	4.26 (14.0)
6.0m 19.7ft	kg lb					*3,290 *7,250	*3,290 *7,250					*2,070 *4,560	*2,070 *4,560	5.85 (19.2)
4.5m 14.8ft	kg lb					*3,580 *7,890	*3,580 *7,890	*3,180 *7,010	2,570 5,670			*1,960 *4,320	*1,960 *4,320	6.76 (22.2)
3.0m 9.8ft	kg lb			*5,700 *12,570	*5,700 *12,570	*4,850 *10,690	3,870 8,530	*4,000 *8,820	2,490 5,490			*1,980 *4,370	1,830 4,030	7.25 (23.8)
1.5m 4.9ft	kg lb			*8,880 *19,580	6,620 14,590	*5,760 *12,700	3,620 7,980	*4,450 *9,810	2,380 5,250			*2,100 *4,630	1,730 3,810	7.40 (24.3)
0.0m 0.0ft	kg lb			*8,300 *18,300	6,180 13,620	*6,300 *13,890	3,410 7,520	*4,650 *10,250	2,280 5,030			*2,360 *5,200	1,750 3,860	7.24 (23.8)
-1.5m -4.9ft	kg lb	*4,700 *10,360	*4,700 *10,360	*9,190 *20,260	6,070 13,380	*6,170 *13,600</								

HX145A LCR LIFTING CAPACITY

Rating over-front Rating over-side or 360 degree

Rating over-front Rating over-side or 360 degree

HX145A LCR MONO BOOM

4.60 m (15' 1") boom, 3.00 m (9' 10") arm equipped with 3,300kg counter weight and 600mm (24") Triple grouser shoe without Dozer.

Lift-point height (m/ft)	Lift-point radius										At max. reach		
	1.5 m (4.9 ft)		3.0 m (9.8 ft)		4.5 m (14.8 ft)		6.0 m (19.7 ft)		7.5 m (24.6 ft)		Capacity	Reach	
7.5m 24.6ft	kg										*2,450	*2,450	4.26
	lb										*5,400	*5,400	(14.0)
6.0m 19.7ft	kg			*3,290	*3,290						*2,070	*2,070	5.85
	lb			*7,250	*7,250						*4,560	*4,560	(19.2)
4.5m 14.8ft	kg			*3,580	*3,580	*3,180	2,580				*1,960	*1,960	6.76
	lb			*7,890	*7,890	*7,010	5,690				*4,320	*4,320	(22.2)
3.0m 9.8ft	kg		*5,700	*5,700	*4,850	3,880	*4,000	2,500			*1,980	1,840	7.25
	lb		*12,570	*12,570	*10,690	8,550	*8,820	5,510			*4,370	4,060	(23.8)
1.5m 4.9ft	kg		*8,880	6,630	*5,760	3,630	3,920	2,390			*2,100	1,740	7.40
	lb		*19,580	14,620	*12,700	8,000	8,640	5,270			*4,630	3,840	(24.3)
0.0m 0.0ft	kg		*8,300	6,190	*5,910	3,420	3,810	2,290			*2,360	1,750	7.24
	lb		*18,300	13,650	*13,030	7,540	8,400	5,050			*5,200	3,860	(23.8)
-1.5m -4.9ft	kg	*4,700	*4,700	*9,190	6,080	5,790	3,330	3,760	2,240		*2,860	1,920	6.75
	lb	*10,360	*10,360	*20,260	13,400	12,760	7,340	8,290	4,940		*6,310	4,230	(22.1)
-3.0m -9.8ft	kg	*7,750	*7,750	*7,480	6,140	*5,180	3,330				*3,530	2,350	5.83
	lb	*17,090	*17,090	*16,490	13,540	*11,420	7,340				*7,780	5,180	(19.1)

4.60 m (15' 1") boom, 3.00 m (9' 10") arm equipped with 3,300kg counter weight and 600mm (24") Triple grouser shoe Dozer up.

Lift-point height (m/ft)	Lift-point radius										At max. reach		
	1.5 m (4.9 ft)		3.0 m (9.8 ft)		4.5 m (14.8 ft)		6.0 m (19.7 ft)		7.5 m (24.6 ft)		Capacity	Reach	
7.5m 24.6ft	kg										*2,450	*2,450	4.26
	lb										*5,400	*5,400	(14.0)
6.0m 19.7ft	kg			*3,290	*3,290						*2,070	*2,070	5.85
	lb			*7,250	*7,250						*4,560	*4,560	(19.2)
4.5m 14.8ft	kg			*3,580	*3,580	*3,180	2,750				*1,960	*1,960	6.76
	lb			*7,890	*7,890	*7,010	6,060				*4,320	*4,320	(22.2)
3.0m 9.8ft	kg		*5,700	*5,700	*4,850	4,130	*4,000	2,670			*1,980	*1,980	7.25
	lb		*12,570	*12,570	*10,690	9,110	*8,820	5,890			*4,370	*4,370	(23.8)
1.5m 4.9ft	kg		*8,880	7,070	*5,760	3,880	3,990	2,560			*2,100	1,870	7.40
	lb		*19,580	15,590	*12,700	8,550	8,800	5,640			*4,630	4,120	(24.3)
0.0m 0.0ft	kg		*8,300	6,640	*6,020	3,670	3,890	2,460			*2,360	1,890	7.24
	lb		*18,300	14,640	*13,270	8,090	8,580	5,420			*5,200	4,170	(23.8)
-1.5m -4.9ft	kg	*4,700	*4,700	*9,190	6,520	5,910	3,570	3,830	2,410		*2,860	2,070	6.75
	lb	*10,360	*10,360	*20,260	14,370	13,030	7,870	8,440	5,310		*6,310	4,560	(22.1)
-3.0m -9.8ft	kg	*7,750	*7,750	*7,480	6,580	*5,180	3,580				*3,530	2,530	5.83
	lb	*17,090	*17,090	*16,490	14,510	*11,420	7,890				*7,780	5,580	(19.1)

4.60 m (15' 1") boom, 3.00 m (9' 10") arm equipped with 3,300kg counter weight and 600mm (24") Triple grouser shoe Dozer down.

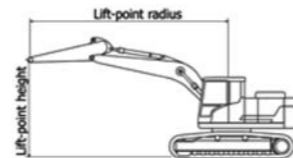
Lift-point height (m/ft)	Lift-point radius										At max. reach		
	1.5 m (4.9 ft)		3.0 m (9.8 ft)		4.5 m (14.8 ft)		6.0 m (19.7 ft)		7.5 m (24.6 ft)		Capacity	Reach	
7.5m 24.6ft	kg										*2,450	*2,450	4.26
	lb										*5,400	*5,400	(14.0)
6.0m 19.7ft	kg			*3,290	*3,290						*2,070	*2,070	5.85
	lb			*7,250	*7,250						*4,560	*4,560	(19.2)
4.5m 14.8ft	kg			*3,580	*3,580	*3,180	2,750				*1,960	*1,960	6.76
	lb			*7,890	*7,890	*7,010	6,060				*4,320	*4,320	(22.2)
3.0m 9.8ft	kg		*5,700	*5,700	*4,850	4,130	*4,000	2,670			*1,980	*1,980	7.25
	lb		*12,570	*12,570	*10,690	9,110	*8,820	5,890			*4,370	*4,370	(23.8)
1.5m 4.9ft	kg		*8,880	7,070	*5,760	3,880	*4,450	2,560			*2,100	1,870	7.40
	lb		*19,580	15,590	*12,700	8,550	*9,810	5,640			*4,630	4,120	(24.3)
0.0m 0.0ft	kg		*8,300	6,640	*6,300	3,670	*4,650	2,460			*2,360	1,890	7.24
	lb		*18,300	14,640	*13,890	8,090	*10,250	5,420			*5,200	4,170	(23.8)
-1.5m -4.9ft	kg	*4,700	*4,700	*9,190	6,520	*6,170	3,570	*4,440	2,410		*2,860	2,070	6.75
	lb	*10,360	*10,360	*20,260	14,370	*13,600	7,870	*9,790	5,310		*6,310	4,560	(22.1)
-3.0m -9.8ft	kg	*7,750	*7,750	*7,480	6,580	*5,180	3,580				*3,530	2,530	5.83
	lb	*17,090	*17,090	*16,490	14,510	*11,420	7,890				*7,780	5,580	(19.1)

1 | Lifting capacity are based on ISO 10567.

2 | Lifting capacity of HX Series does not exceed 75% of tipping load with the machine on firm, level ground or 87% of full hydraulic capacity.

3 | The Lift-point is bucket pivot mounting pin on the arm (without bucket mass).

4 | (*) indicates load limited by hydraulic capacity.



HX145A LCR 2-PIECE BOOM

4.90 m (16' 1") boom, 2.10 m (6' 11") arm equipped with 2,800kg counter weight and 600mm (24") Triple grouser shoe.

Lift-point height (m/ft)	Lift-point radius										At max. reach		
	3.0 m (9.8 ft)		4.5 m (14.8 ft)		6.0 m (19.7 ft)		Capacity		Reach				
7.5m 24.6ft	kg	*5,010	*5,010								*4,600	*4,600	3.56
	lb	*11,050	*11,050								*10,140	*10,140	(11.7)
6.0m 19.7ft	kg			*4,170	*4,170						*3,600	3,220	5.37
	lb			*9,190	*9,190						*7,940	7,100	(17.6)
4.5m 14.8ft	kg	*5,300	*5,300	*4,460	4,220	*3,990	2,690				*3,320	2,440	6.34
	lb	*11,680	*11,680	*9,830	9,300	*8,800	5,930				*7,320	5,380	(20.8)
3.0m 9.8ft	kg			*5,220	3,980	4,160	2,610				*3,280	2,120	6.86
	lb			*11,510	8,770	9,170	5,750				*7,230	4,670	(22.5)
1.5m 4.9ft	kg			*5,980	3,730	4,040	2,510				*3,200	2,000	7.03
	lb			*13,180	8,220	8,910	5,530				*7,050	4,410	(23.1)
0.0m 0.0ft	kg			6,070	3,580	3,960	2,430				3,270	2,030	6.86
	lb			13,380	7,890	8,730	5,360				7,210	4,480	(22.5)
-1.5m -4.9ft	kg	*7,840	6,510	*5,900	3,550	3,940	2,410				3,660	2,260	6.34
	lb	*17,280	14,350	*13,010	7,830	8,690	5,310				8,070	4,980	(20.8)
-3.0m -9.8ft	kg			*4,700	3,620								
	lb			*10,360	7,980								

4.9 m (16' 1") boom, 2.10 m (6' 11") arm equipped with 2,800kg counter weight and 600mm (24") Triple grouser shoe Dozer up.

Lift-point height (m/ft)	Lift-point radius										At max. reach		
	3.0 m (9.8 ft)		4.5 m (14.8 ft)		6.0 m (19.7 ft)		Capacity		Reach				
7.5m 24.6ft	kg	*5,010	*5,010								*4,600	*4,600	3.56
	lb	*11,050	*11,050								*10,140	*10,140	(11.7)
6.0m 19.7ft	kg			*4,170	*4,170						*3,600	3,420	5.37
	lb			*9,190	*9,190						*7,940	7,540	(17.6)
4.5m 14.8ft	kg	*5,300	*5,300	*4,460	*4,460	*3,990	2,860				*3,320	2,600	6.34
	lb	*11,680	*11,680	*9,830	*9,830	*8,800	6,310				*7,320	5,730	(20.8)
3.0m 9.8ft	kg			*5,220	4,230	*4,200	2,790				*3,280	2,260	6.86
	lb			*11,510	9,330	*9,260	6,150				*7,230	4,980	(22.5)
1.5m 4.9ft	kg			*5,980	3,980	4,120	2,680				3,260	2,140	7.

LIFTING CAPACITY

Rating over-front Rating over-side or 360 degree

HX145A LCR 2-PIECE BOOM

4.90 m (16' 1") boom, 2.10 m (6' 11") arm equipped with 3,300kg counter weight and 600mm (24") Triple grouser shoe.

Lift-point height (m/ft)	Lift-point radius						At max. reach		
	3.0 m (9.8 ft)		4.5 m (14.8 ft)		6.0 m (19.7 ft)		Capacity	Reach	
7.5m 24.6ft	kg lb	*5,010 *11,050	*5,010 *11,050				*4,600 *10,140	*4,600 *10,140	3.56 (11.7)
6.0m 19.7ft	kg lb		*4,170 *9,190	*4,170 *9,190			*3,600 *7,940	*3,500 7,720	5.37 (17.6)
4.5m 14.8ft	kg lb	*5,300 *11,680	*5,300 *11,680	*4,460 *9,830	*4,460 *9,830	*3,990 *8,800	2,930 6,460	*3,320 *7,320	6.34 (20.8)
3.0m 9.8ft	kg lb		*5,220 *11,510	4,330 9,550	*4,200 *9,260	2,850 6,280	2,320 5,110	*3,280 *7,230	6.86 (22.5)
1.5m 4.9ft	kg lb		*5,980 *13,180	4,080 8,990	4,350 9,590	2,750 6,060	2,190 4,830	*3,420 *7,540	7.03 (23.1)
0.0m 0.0ft	kg lb		*6,250 *13,780	3,930 8,660	4,260 9,390	2,670 5,890	2,240 4,940	3,530 *7,780	6.86 (22.5)
-1.5m -4.9ft	kg lb	*7,840 *17,280	7,120 15,700	*5,900 *13,010	3,890 8,580	*4,240 *9,350	2,660 5,860	*3,830 *8,440	6.34 (20.8)
-3.0m -9.8ft	kg lb		*4,700 *10,360	3,960 8,730					

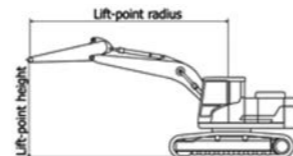
4.9 m (16' 1") boom, 2.10 m (6' 11") arm equipped with 3,300kg counter weight and 600mm (24") Triple grouser shoe Dozer up.

Lift-point height (m/ft)	Lift-point radius						At max. reach		
	3.0 m (9.8 ft)		4.5 m (14.8 ft)		6.0 m (19.7 ft)		Capacity	Reach	
7.5m 24.6ft	kg lb	*5,010 *11,050	*5,010 *11,050				*4,600 *10,140	*4,600 *10,140	3.56 (11.7)
6.0m 19.7ft	kg lb		*4,170 *9,190	*4,170 *9,190			*3,600 *7,940	*3,600 *7,940	5.37 (17.6)
4.5m 14.8ft	kg lb	*5,300 *11,680	*5,300 *11,680	*4,460 *9,830	*4,460 *9,830	*3,990 *8,800	3,100 6,830	*3,320 *7,320	6.34 (20.8)
3.0m 9.8ft	kg lb		*5,220 *11,510	4,580 10,100	*4,200 *9,260	3,030 6,680	2,470 5,450	*3,280 *7,230	6.86 (22.5)
1.5m 4.9ft	kg lb		*5,980 *13,180	4,330 9,550	4,420 9,740	2,920 6,440	2,340 5,160	*3,420 *7,540	7.03 (23.1)
0.0m 0.0ft	kg lb		*6,250 *13,780	4,180 9,220	4,340 9,570	2,840 6,260	2,380 5,250	3,590 *7,910	6.86 (22.5)
-1.5m -4.9ft	kg lb	*7,840 *17,280	7,560 16,670	*5,900 *13,010	4,140 9,130	*4,240 *9,350	2,830 6,240	*3,830 *8,440	6.34 (20.8)
-3.0m -9.8ft	kg lb		*4,700 *10,360	4,210 9,280					

4.9 m (16' 1") boom, 2.10 m (6' 11") arm equipped with 3,300kg counter weight and 600mm (24") Triple grouser shoe Dozer down.

Lift-point height (m/ft)	Lift-point radius						At max. reach		
	3.0 m (9.8 ft)		4.5 m (14.8 ft)		6.0 m (19.7 ft)		Capacity	Reach	
7.5m 24.6ft	kg lb	*5,010 *11,050	*5,010 *11,050				*4,600 *10,140	*4,600 *10,140	3.56 (11.7)
6.0m 19.7ft	kg lb		*4,170 *9,190	*4,170 *9,190			*3,600 *7,940	*3,600 *7,940	5.37 (17.6)
4.5m 14.8ft	kg lb	*5,300 *11,680	*5,300 *11,680	*4,460 *9,830	*4,460 *9,830	*3,990 *8,800	3,100 6,830	*3,320 *7,320	6.34 (20.8)
3.0m 9.8ft	kg lb		*5,220 *11,510	4,580 10,100	*4,200 *9,260	3,030 6,680	2,470 5,450	*3,280 *7,230	6.86 (22.5)
1.5m 4.9ft	kg lb		*5,980 *13,180	4,330 9,550	*4,490 *9,900	2,920 6,440	2,340 5,160	*3,420 *7,540	7.03 (23.1)
0.0m 0.0ft	kg lb		*6,250 *13,780	4,180 9,220	*4,600 *10,140	2,840 6,260	2,380 5,250	*3,770 *8,310	6.86 (22.5)
-1.5m -4.9ft	kg lb	*7,840 *17,280	7,560 16,670	*5,900 *13,010	4,140 9,130	*4,240 *9,350	2,830 6,240	*3,830 *8,440	6.34 (20.8)
-3.0m -9.8ft	kg lb		*4,700 *10,360	4,210 9,280					

- | 1 | Lifting capacity are based on ISO 10567.
- | 2 | Lifting capacity of HX Series does not exceed 75% of tipping load with the machine on firm, level ground or 87% of full hydraulic capacity.
- | 3 | The Lift-point is bucket pivot mounting pin on the arm(without bucket mass).
- | 4 | (*) indicates load limited by hydraulic capacity.



Rating over-front Rating over-side or 360 degree

HX145A LCR 2-PIECE BOOM

4.90 m (16' 1") boom, 2.50 m (8' 2") arm equipped with 2,800kg counter weight and 600mm (24") Triple grouser shoe.

Lift-point height (m/ft)	Lift-point radius						At max. reach		
	3.0 m (9.8 ft)		4.5 m (14.8 ft)		6.0 m (19.7 ft)		Capacity	Reach	
7.5m 24.6ft	kg lb						*3,080 *6,790	*3,080 *6,790	4.31 (14.1)
6.0m 19.7ft	kg lb			*3,790 *8,360	*3,790 *8,360		*2,500 *5,510	*2,500 *5,510	5.89 (19.3)
4.5m 14.8ft	kg lb	*3,800 *8,380	*3,800 *8,380	*4,130 *9,110	*4,130 *9,110	*3,730 *8,220	2,710 5,970	*2,310 *5,090	6.79 (22.3)
3.0m 9.8ft	kg lb	*7,170 *15,810	*7,170 *15,810	*4,910 *10,820	4,020 8,860	*4,010 *8,840	2,620 5,780	*2,270 *5,000	7.28 (23.9)
1.5m 4.9ft	kg lb			*5,750 *12,680	3,750 8,270	4,040 8,910	2,500 5,510	*2,350 *5,180	7.43 (24.4)
0.0m 0.0ft	kg lb	*3,940 *8,690	*3,940 *8,690	6,060 13,360	3,560 7,850	3,930 8,660	2,400 5,290	*2,550 *5,620	7.27 (23.9)
-1.5m -4.9ft	kg lb	*7,150 *15,760	6,410 14,130	5,980 13,180	3,500 7,720	3,890 8,580	2,370 5,220	*2,970 *6,550	6.78 (22.3)
-3.0m -9.8ft	kg lb	*7,140 *15,740	6,520 14,370	*5,090 *11,220	3,540 7,800				

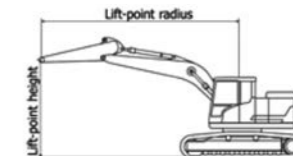
4.9 m (16' 1") boom, 2.50 m (8' 2") arm equipped with 2,800kg counter weight and 600mm (24") Triple grouser shoe Dozer up.

Lift-point height (m/ft)	Lift-point radius						At max. reach		
	3.0 m (9.8 ft)		4.5 m (14.8 ft)		6.0 m (19.7 ft)		Capacity	Reach	
7.5m 24.6ft	kg lb						*3,080 *6,790	*3,080 *6,790	4.31 (14.1)
6.0m 19.7ft	kg lb			*3,790 *8,360	*3,790 *8,360		*2,500 *5,510	*2,500 *5,510	5.89 (19.3)
4.5m 14.8ft	kg lb	*3,800 *8,380	*3,800 *8,380	*4,130 *9,110	*4,130 *9,110	*3,730 *8,220	2,880 6,350	*2,310 *5,090	6.79 (22.3)
3.0m 9.8ft	kg lb	*7,170 *15,810	*7,170 *15,810	*4,910 *10,820	4,270 9,410	*4,010 *8,840	2,790 6,150	*2,270 *5,000	7.28 (23.9)
1.5m 4.9ft	kg lb			*5,750 *12,680	3,990 8,800	4,110 9,060	2,670 5,890	*2,350 *5,180	7.43 (24.4)
0.0m 0.0ft	kg lb	*3,940 *8,690	*3,940 *8,690	6,170 13,600	3,810 8,400	4,010 8,840	2,580 5,690	*2,550 *5,620	7.27 (23.9)
-1.5m -4.9ft	kg lb	*7,150 *15,760	6,850 15,100	*6,010 *13,250	3,740 8,250	3,960 8,730	2,540 5,600	*2,970 *6,550	6.78 (22.3)
-3.0m -9.8ft	kg lb	*7,140 *15,740	6,960 15,340	*5,090 *11,220	3,780 8,330				

4.9 m (16' 1") boom, 2.50 m (8' 2") arm equipped with 2,800kg counter weight and 600mm (24") Triple grouser shoe Dozer down.

Lift-point height (m/ft)	Lift-point radius						At max. reach		
	3.0 m (9.8 ft)		4.5 m (14.8 ft)		6.0 m (19.7 ft)		Capacity	Reach	
7.5m 24.6ft	kg lb						*3,080 *6,790	*3,080 *6,790	4.31 (14.1)
6.0m 19.7ft	kg lb			*3,790 *8,360	*3,790 *8,360		*2,500 *5,510	*2,500 *5,510	5.89 (19.3)
4.5m 14.8ft	kg lb	*3,800 *8,380	*3,800 *8,380	*4,130 *9,110	*4,130 *9,110	*3,730 *8,220	2,880 6,350	*2,310 *5,090	6.79 (22.3)
3.0m 9.8ft	kg lb	*7,170 *15,810	*7,170 *15,810	*4,910 *10,820	4,270 9,410	*4,010 *8,840	2,790 6,150	*2,270 *5,000	7.28 (23.9)
1.5m 4.9ft	kg lb			*5,750 *12,680	3,990 8,800	*4,350 *9,590	2,670 5,890	*2,350 *5,180	7.43 (24.4)
0.0m 0.0ft	kg lb	*3,940 *8,690	*3,940 *8,690	*6,180 *13,620	3,810 8,400	*4,550 *10,030	2,580 5,690	*2,550 *5,620	7.27 (23.9)
-1.5m -4.9ft	kg lb	*7,150 *15,760	6,850 15,100	*6,010 *13,250	3,740 8,250	*4,370 *9,630	2,540 5,600	*2,970 *6,550	6.78 (22.3)
-3.0m -9.8ft	kg lb	*7,140 *15,740	6,960 15,340	*5,090 *11,220	3,780 8,330				

- | 1 | Lifting capacity are based on ISO 10567.
- | 2 | Lifting capacity of HX Series does not exceed 75% of tipping load with the machine on firm, level ground or 87% of full hydraulic capacity.
- | 3 | The Lift-point is bucket pivot mounting pin on the arm(without bucket mass).
- | 4 | (*) indicates load limited by hydraulic capacity.



LIFTING CAPACITY

Rating over-front Rating over-side or 360 degree

Rating over-front Rating over-side or 360 degree

HX145A LCR 2-PIECE BOOM

4.90 m (16' 1") boom, 2.50 m (8' 2") arm equipped with 3,300kg counter weight and 600mm (24") Triple grouser shoe.

Lift-point height (m/ft)	Lift-point radius								At max. reach		
	3.0 m (9.8 ft)		4.5 m (14.8 ft)		6.0 m (19.7 ft)		7.5 m (24.6 ft)		Capacity	Reach	
7.5m 24.6ft	kg lb								*3,080 *6,790	*3,080 *6,790	4.31 (14.1)
6.0m 19.7ft	kg lb			*3,790 *8,360	*3,790 *8,360				*2,500 *5,510	*2,500 *5,510	5.89 (19.3)
4.5m 14.8ft	kg lb	*3,800 *8,380	*3,800 *8,380	*4,130 *9,110	*4,130 *9,110	*3,730 *8,220	2,950 6,500		*2,310 *5,090	*2,310 *5,090	6.79 (22.3)
3.0m 9.8ft	kg lb	*7,170 *15,810	*7,170 *15,810	*4,910 *10,820	4,370 9,630	*4,010 *8,840	2,860 6,310		*2,270 *5,000	2,110 4,650	7.28 (23.9)
1.5m 4.9ft	kg lb			*5,750 *12,680	4,090 9,020	4,340 9,570	2,740 6,040		*2,350 *5,180	2,000 4,410	7.43 (24.4)
0.0m 0.0ft	kg lb	*3,940 *8,690	*3,940 *8,690	*6,180 *13,620	3,910 8,620	4,240 9,350	2,640 5,820		*2,550 *5,620	2,040 4,500	7.27 (23.9)
-1.5m -4.9ft	kg lb	*7,150 *15,760	7,020 15,480	*6,010 *13,250	3,840 8,470	4,200 9,260	2,610 5,750		*2,970 *6,550	2,230 4,920	6.78 (22.3)
-3.0m -9.8ft	kg lb	*7,140 *15,740	7,130 15,720	*5,090 *11,220	3,880 8,550						

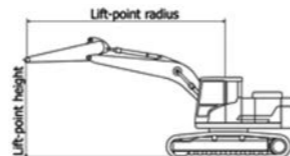
4.90 m (16' 1") boom, 2.50 m (8' 2") arm equipped with 3,300kg counter weight and 600mm (24") Triple grouser shoe.

Lift-point height (m/ft)	Lift-point radius								At max. reach		
	3.0 m (9.8 ft)		4.5 m (14.8 ft)		6.0 m (19.7 ft)		7.5 m (24.6 ft)		Capacity	Reach	
7.5m 24.6ft	kg lb								*3,080 *6,790	*3,080 *6,790	4.31 (14.1)
6.0m 19.7ft	kg lb			*3,790 *8,360	*3,790 *8,360				*2,500 *5,510	*2,500 *5,510	5.89 (19.3)
4.5m 14.8ft	kg lb	*3,800 *8,380	*3,800 *8,380	*4,130 *9,110	*4,130 *9,110	*3,730 *8,220	3,130 6,900		*2,310 *5,090	*2,310 *5,090	6.79 (22.3)
3.0m 9.8ft	kg lb	*7,170 *15,810	*7,170 *15,810	*4,910 *10,820	4,620 10,190	*4,010 *8,840	3,030 6,680		*2,270 *5,000	2,250 4,960	7.28 (23.9)
1.5m 4.9ft	kg lb			*5,750 *12,680	4,340 9,570	*4,350 *9,590	2,910 6,420		*2,350 *5,180	2,140 4,720	7.43 (24.4)
0.0m 0.0ft	kg lb	*3,940 *8,690	*3,940 *8,690	*6,180 *13,620	4,150 9,150	4,310 9,500	2,820 6,220		*2,550 *5,620	2,170 4,780	7.27 (23.9)
-1.5m -4.9ft	kg lb	*7,150 *15,760	*7,150 *15,760	*6,010 *13,250	4,090 9,020	4,270 9,410	2,780 6,130		*2,970 *6,550	2,380 5,250	6.78 (22.3)
-3.0m -9.8ft	kg lb	*7,140 *15,740	*7,140 *15,740	*5,090 *11,220	4,130 9,110						

4.90 m (16' 1") boom, 2.50 m (8' 2") arm equipped with 3,300kg counter weight and 600mm (24") Triple grouser shoe Dozer down.

Lift-point height (m/ft)	Lift-point radius								At max. reach		
	3.0 m (9.8 ft)		4.5 m (14.8 ft)		6.0 m (19.7 ft)		7.5 m (24.6 ft)		Capacity	Reach	
7.5m 24.6ft	kg lb								*3,080 *6,790	*3,080 *6,790	4.31 (14.1)
6.0m 19.7ft	kg lb			*3,790 *8,360	*3,790 *8,360				*2,500 *5,510	*2,500 *5,510	5.89 (19.3)
4.5m 14.8ft	kg lb	*3,800 *8,380	*3,800 *8,380	*4,130 *9,110	*4,130 *9,110	*3,730 *8,220	3,130 6,900		*2,310 *5,090	*2,310 *5,090	6.79 (22.3)
3.0m 9.8ft	kg lb	*7,170 *15,810	*7,170 *15,810	*4,910 *10,820	4,620 10,190	*4,010 *8,840	3,030 6,680		*2,270 *5,000	2,250 4,960	7.28 (23.9)
1.5m 4.9ft	kg lb			*5,750 *12,680	4,340 9,570	*4,350 *9,590	2,910 6,420		*2,350 *5,180	2,140 4,720	7.43 (24.4)
0.0m 0.0ft	kg lb	*3,940 *8,690	*3,940 *8,690	*6,180 *13,620	4,150 9,150	*4,550 *10,030	2,820 6,220		*2,550 *5,620	2,170 4,780	7.27 (23.9)
-1.5m -4.9ft	kg lb	*7,150 *15,760	*7,150 *15,760	*6,010 *13,250	4,090 9,020	*4,370 *9,630	2,780 6,130		*2,970 *6,550	2,380 5,250	6.78 (22.3)
-3.0m -9.8ft	kg lb	*7,140 *15,740	*7,140 *15,740	*5,090 *11,220	4,130 9,110						

- | 1 | Lifting capacity are based on ISO 10567.
- | 2 | Lifting capacity of HX Series does not exceed 75% of tipping load with the machine on firm, level ground or 87% of full hydraulic capacity.
- | 3 | The Lift-point is bucket pivot mounting pin on the arm (without bucket mass).
- | 4 | (*) indicates load limited by hydraulic capacity.



HX145A LCR HW MONO BOOM

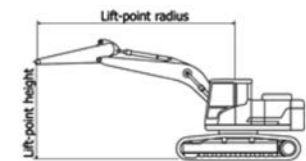
4.60 m (15' 1") boom, 2.10 m (6' 11") arm equipped with 2,800kg counter weight and 800mm (32") Triple grouser shoe.

Lift-point height (m/ft)	Lift-point radius								At max. reach		
	3.0 m (9.8 ft)		4.5 m (14.8 ft)		6.0 m (19.7 ft)		Capacity		Reach		
7.5m 24.6ft	kg lb	*3,830 *8,440	*3,830 *8,440						*3,680 *8,110	*3,680 *8,110	3.06 (10.0)
6.0m 19.7ft	kg lb	*4,880 *10,760	*4,880 *10,760	*4,190 *9,240	*4,190 *9,240				*2,960 *6,530	*2,960 *6,530	4.97 (16.3)
4.5m 14.8ft	kg lb	*6,200 *13,670	*6,200 *13,670	*5,000 *11,020	4,500 9,920				*2,820 *6,220	*2,820 *6,220	5.94 (19.5)
3.0m 9.8ft	kg lb	*8,530 *18,810	7,910 17,440	*5,700 *12,570	4,300 9,480	4,420 9,740	2,830 6,240		*2,900 *6,390	2,550 5,620	6.43 (21.1)
1.5m 4.9ft	kg lb			*6,320 *13,930	4,090 9,020	4,330 9,550	2,750 6,060		*3,180 *7,010	2,430 5,360	6.54 (21.5)
0.0m 0.0ft	kg lb	*7,890 *17,390	7,220 15,920	*6,350 *14,000	3,970 8,750	4,270 9,410	2,690 5,930		*3,770 *8,310	2,530 5,580	6.29 (20.7)
-1.5m -4.9ft	kg lb	*7,790 *17,170	7,260 16,010	*5,570 *12,280	3,960 8,730				*4,090 *9,020	2,930 6,460	5.64 (18.5)
-3.0m -9.8ft	kg lb	*5,070 *11,180	*5,070 *11,180						*3,430 *7,560	*3,430 *7,560	4.41 (14.5)

4.60 m (15' 1") boom, 2.10 m (6' 11") arm equipped with 3,300kg counter weight and 800mm (32") Triple grouser shoe.

Lift-point height (m/ft)	Lift-point radius								At max. reach		
	3.0 m (9.8 ft)		4.5 m (14.8 ft)		6.0 m (19.7 ft)		Capacity		Reach		
7.5m 24.6ft	kg lb	*3,830 *8,440	*3,830 *8,440						*3,680 *8,110	*3,680 *8,110	3.06 (10.0)
6.0m 19.7ft	kg lb	*4,880 *10,760	*4,880 *10,760	*4,190 *9,240	*4,190 *9,240				*2,960 *6,530	*2,960 *6,530	4.97 (16.3)
4.5m 14.8ft	kg lb	*6,200 *13,670	*6,200 *13,670	*5,000 *11,020	4,760 10,490				*2,820 *6,220	*2,820 *6,220	5.94 (19.5)
3.0m 9.8ft	kg lb	*8,530 *18,810	8,370 18,450	*5,700 *12,570	4,560 10,050	4,560 10,050	3,010 6,640		*2,900 *6,390	2,710 5,970	6.43 (21.1)
1.5m 4.9ft	kg lb			*6,320 *13,930	4,350 9,590	4,570 10,080	2,930 6,460		*3,180 *7,010	2,600 5,730	6.54 (21.5)
0.0m 0.0ft	kg lb	*7,890 *17,390	7,690 16,950	*6,350 *14,000	4,230 9,330	4,510 9,940	2,870 6,330		*3,770 *8,310	2,700 5,950	6.29 (20.7)
-1.5m -4.9ft	kg lb	*7,790 *17,170	7,730 17,040	*5,570 *12,280	4,220 9,300				*4,090 *9,020	3,120 6,880	5.64 (18.5)
-3.0m -9.8ft	kg lb	*5,070 *11,180	*5,070 *11,180						*3,430 *7,560	*3,430 *7,560	4.41 (14.5)

- | 1 | Lifting capacity are based on ISO 10567.
- | 2 | Lifting capacity of HX Series does not exceed 75% of tipping load with the machine on firm, level ground or 87% of full hydraulic capacity.
- | 3 | The Lift-point is bucket pivot mounting pin on the arm (without bucket mass).
- | 4 | (*) indicates load limited by hydraulic capacity.



LIFTING CAPACITY

Rating over-front Rating over-side or 360 degree

HX145A LCR HW MONO BOOM

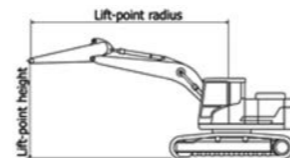
4.60m (15' 1") boom, 2.50 m (8' 2") arm equipped with 2,800kg counter weight and 800mm (32") Triple grouser shoe.

Lift-point height (m/ft)	Lift-point radius								At max. reach			
	1.5 m (4.9 ft)		3.0 m (9.8 ft)		4.5 m (14.8 ft)		6.0 m (19.7 ft)		Capacity	Reach		
7.5m 24.6ft	kg lb								*2,590 *5,710	*2,590 *5,710	3.98 (13.0)	
6.0m 19.7ft	kg lb			*3,760 *8,290	*3,760 *8,290				*2,140 *4,720	*2,140 *4,720	5.58 (18.3)	
4.5m 14.8ft	kg lb		*4,240 *9,350	*4,240 *9,350	*4,430 *9,770	*4,430 *9,770	*3,360 *7,410	2,910 6,420	*2,010 *4,430	*2,010 *4,430	6.46 (21.2)	
3.0m 9.8ft	kg lb		*7,830 *17,260	*7,830 *17,260	*5,420 *11,950	4,330 9,550	*4,390 *9,680	2,830 6,240	*2,020 *4,450	*2,020 *4,450	6.91 (22.7)	
1.5m 4.9ft	kg lb		*7,550 *16,640	7,420 16,360	*6,150 *13,560	4,100 9,040	4,330 9,550	2,740 6,040	*2,150 *4,740	*2,150 *4,740	7.01 (23.0)	
0.0m 0.0ft	kg lb		*7,400 *16,310	7,190 15,850	*6,370 *14,040	3,960 8,730	4,250 9,370	2,670 5,890	*2,440 *5,380	2,260 4,980	6.78 (22.2)	
-1.5m -4.9ft	kg lb	*5,540 *12,210	*5,540 *12,210	*8,390 *18,500	7,190 15,850	*5,830 *12,850	3,910 8,620	*4,020 *8,860	2,660 5,860	*3,040 *6,700	2,560 5,640	6.18 (20.3)
-3.0m -9.8ft	kg lb			*6,020 *13,270	*6,020 *13,270	*4,160 *9,170	3,980 8,770		*3,270 *7,210	*3,270 *7,210	5.09 (16.7)	

4.60m (15' 1") boom, 2.50 m (8' 2") arm equipped with 3,300kg counter weight and 800mm (32") Triple grouser shoe.

Lift-point height (m/ft)	Lift-point radius								At max. reach			
	1.5 m (4.9 ft)		3.0 m (9.8 ft)		4.5 m (14.8 ft)		6.0 m (19.7 ft)		Capacity	Reach		
24.6ft 6.0m	kg lb								*2,590 *5,710	*2,590 *5,710	3.98 (13.0)	
19.7ft 4.5m	kg lb			*3,760 *8,290	*3,760 *8,290				*2,140 *4,720	*2,140 *4,720	5.58 (18.3)	
14.8ft 3.0m	kg lb		*4,240 *9,350	*4,240 *9,350	*4,430 *9,770	*4,430 *9,770	*3,360 *7,410	3,090 6,810	*2,010 *4,430	*2,010 *4,430	6.46 (21.2)	
9.8ft 1.5m	kg lb		*7,830 *17,260	*7,830 *17,260	*5,420 *11,950	4,590 10,120	*4,390 *9,680	3,010 6,640	*2,020 *4,450	*2,020 *4,450	6.91 (22.7)	
4.9ft 0.0m	kg lb		*7,550 *16,640	*7,550 *16,640	*6,150 *13,560	4,370 9,630	4,560 10,050	2,920 6,440	*2,150 *4,740	*2,150 *4,740	7.01 (23.0)	
0.0ft -1.5m	kg lb		*7,400 *16,310	*7,400 *16,310	*6,370 *14,040	4,220 9,300	4,480 9,880	2,850 6,280	*2,440 *5,380	2,420 5,340	6.78 (22.2)	
-4.9ft -3.0m	kg lb	*5,540 *12,210	*5,540 *12,210	*8,390 *18,500	7,660 16,890	*5,830 *12,850	4,170 9,190	*4,020 *8,860	2,840 6,260	*3,040 *6,700	2,730 6,020	6.18 (20.3)
-9.8ft -9.8ft	kg lb			*6,020 *13,270	*6,020 *13,270	*4,160 *9,170	3,980 8,770		*3,270 *7,210	*3,270 *7,210	5.09 (16.7)	

- | 1 | Lifting capacity are based on ISO 10567.
- | 2 | Lifting capacity of HX Series does not exceed 75% of tipping load with the machine on firm, level ground or 87% of full hydraulic capacity.
- | 3 | The Lift-point is bucket pivot mounting pin on the arm (without bucket mass).
- | 4 | (*) indicates load limited by hydraulic capacity.



Rating over-front Rating over-side or 360 degree

HX145A LCR HW MONO BOOM

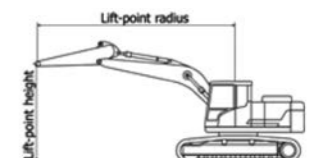
4.60 m (15' 1") boom, 3.00 m (9' 10") arm equipped with 2,800kg counter weight and 800mm (32") Triple grouser shoe.

Lift-point height (m/ft)	Lift-point radius								At max. reach			
	1.5 m (4.9 ft)		3.0 m (9.8 ft)		4.5 m (14.8 ft)		6.0 m (19.7 ft)		Capacity	Reach		
7.5m 24.6ft	kg lb					*2,580 *5,690	*2,580 *5,690			*2,340 *5,160	*2,340 *5,160	4.63 (15.2)
6.0m 19.7ft	kg lb			*3,320 *7,320	*3,320 *7,320	*2,170 *4,780	*2,170 *4,780			*2,040 *4,500	*2,040 *4,500	6.05 (19.9)
4.5m 14.8ft	kg lb			*3,690 *8,140	*3,690 *8,140	*3,320 *7,320	2,950 6,500			*1,950 *4,300	*1,950 *4,300	6.87 (22.6)
3.0m 9.8ft	kg lb			*6,930 *15,280	*6,930 *15,280	*5,030 *11,090	4,400 9,700	*4,160 *9,170	2,860 6,310	*1,990 *4,390	*1,990 *4,390	7.30 (23.9)
1.5m 4.9ft	kg lb			*9,190 *20,260	7,560 16,670	*5,900 *13,010	4,140 9,130	4,340 9,570	2,750 6,060	*2,130 *4,700	2,030 4,480	7.39 (24.3)
0.0m 0.0ft	kg lb			*8,330 *18,360	7,190 15,850	*6,330 *13,960	3,960 8,730	4,240 9,350	2,660 5,860	*2,420 *5,340	2,080 4,590	7.18 (23.6)
-1.5m -4.9ft	kg lb	*5,190 *11,440	*5,190 *11,440	*8,960 *19,750	7,120 15,700	*6,060 *13,360	3,880 8,550	4,200 9,260	2,620 5,780	*3,000 *6,610	2,310 5,090	6.62 (21.7)
-3.0m -9.8ft	kg lb			*8,440 *18,610	*8,440 *18,610	*7,030 *15,500	*7,030 *15,500			*4,870 *10,740	3,910 8,620	5.61 (18.4)

4.60 m (15' 1") boom, 3.00 m (9' 10") arm equipped with 3,300kg counter weight and 800mm (32") Triple grouser shoe.

Lift-point height (m/ft)	Lift-point radius								At max. reach			
	1.5 m (4.9 ft)		3.0 m (9.8 ft)		4.5 m (14.8 ft)		6.0 m (19.7 ft)		Capacity	Reach		
7.5m 24.6ft	kg lb					*2,580 *5,690	*2,580 *5,690			*2,340 *5,160	*2,340 *5,160	4.63 (15.2)
6.0m 19.7ft	kg lb			*3,320 *7,320	*3,320 *7,320	*2,170 *4,780	*2,170 *4,780			*2,040 *4,500	*2,040 *4,500	6.05 (19.9)
4.5m 14.8ft	kg lb			*3,690 *8,140	*3,690 *8,140	*3,320 *7,320	3,130 6,900			*1,950 *4,300	*1,950 *4,300	6.87 (22.6)
3.0m 9.8ft	kg lb			*6,930 *15,280	*6,930 *15,280	*5,030 *11,090	4,660 10,270	*4,160 *9,170	3,040 6,700	*1,990 *4,390	*1,990 *4,390	7.30 (23.9)
1.5m 4.9ft	kg lb			*9,190 *20,260	8,030 17,700	*5,900 *13,010	4,410 9,720	*4,510 *9,940	2,930 6,460	*2,130 *4,700	*2,130 *4,700	7.39 (24.3)
0.0m 0.0ft	kg lb			*8,330 *18,360	7,660 16,890	*6,330 *13,960	4,220 9,300	4,480 9,880	2,840 6,260	*2,420 *5,340	2,220 4,890	7.18 (23.6)
-1.5m -4.9ft	kg lb	*5,190 *11,440	*5,190 *11,440	*8,960 *19,750	7,580 16,710	*6,060 *13,360	4,140 9,130	*4,340 *9,570	2,800 6,170	*3,000 *6,610	2,470 5,450	6.62 (21.7)
-3.0m -9.8ft	kg lb			*8,440 *18,610	*8,440 *18,610	*7,030 *15,500	*7,030 *15,500			*4,870 *10,740	4,170 9,190	5.61 (18.4)

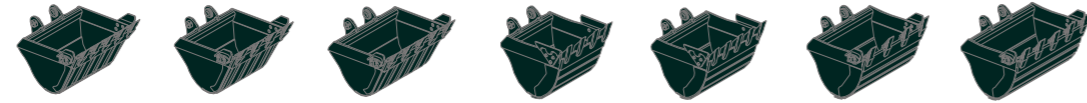
- | 1 | Lifting capacity are based on ISO 10567.
- | 2 | Lifting capacity of HX Series does not exceed 75% of tipping load with the machine on firm, level ground or 87% of full hydraulic capacity.
- | 3 | The Lift-point is bucket pivot mounting pin on the arm (without bucket mass).
- | 4 | (*) indicates load limited by hydraulic capacity.



BUCKET SELECTION GUIDE & DIGGING FORCE

BUCKETS

All buckets are welded with high-strength steel.



SAE Heaped m³ (yd³) 0.51 (0.67) 0.59 (0.77) 0.64 (0.84) ◆ 0.67 (0.88) ◆ 0.74 (0.97) 0.50 (0.65) 0.61 (0.80)

Capacity m ³ (yd ³)		Width mm (in)		Weight kg (lb)	Tooth EA	Recommendation mm (ft.in)				
SAE Heaped	CECE Heaped	Without Side Cutters	With Side Cutters			2,800 kg CWT				
						4,600 (15' 1") Boom		4,940(2pcs) (16' 2") Boom		
						2,100 (6' 11") Arm	2,500 (8' 2") Arm	3,000 (9' 10") Arm	2,100 (6' 11") Arm	2,500 (8' 2") Arm
0.51 (0.67)	0.45 (0.59)	865 (34.1")	995 (39.2")	395 (870)	5	●	●	●	●	●
0.59 (0.77)	0.51 (0.67)	955 (37.6")	1,085 (42.7")	415 (910)	5	●	●	●	●	●
0.64 (0.84)	0.55 (0.72)	1,040 (40.9")	1,170 (46.1")	440 (970)	5	●	●	■	●	●
◆ 0.67 (0.88)	0.60 (0.78)	1,110 (43.7")	1,140 (44.9")	550 (1,210)	5	●	●	■	●	●
◆ 0.74 (0.97)	0.66 (0.86)	1,210 (47.6")	1,240 (48.8")	595 (1,310)	6	●	■	▲	●	■
0.50 (0.65)	0.45 (0.59)	760 (29.9")	800 (31.5")	440 (970)	4	●	●	●	●	●
0.61 (0.80)	0.54 (0.71)	915 (36.0")	950 (37.4")	490 (1,080)	5	●	●	●	●	●

Capacity m ³ (yd ³)		Width mm (in)		Weight kg (lb)	Tooth EA	Recommendation mm (ft.in)				
SAE Heaped	CECE Heaped	Without Side Cutters	With Side Cutters			3,300 kg CWT				
						4,600 (15' 1") Mono Boom		4,940(2pcs) (16' 2") Boom		
						2,100 (6' 11") Arm	2,500 (8' 2") Arm	3,000 (9' 10") Arm	2,100 (6' 11") Arm	2,500 (8' 2") Arm
0.51 (0.67)	0.45 (0.59)	865 (34.1")	995 (39.2")	395 (870)	5	●	●	●	●	●
0.59 (0.77)	0.51 (0.67)	955 (37.6")	1,085 (42.7")	415 (910)	5	●	●	●	●	●
0.64 (0.84)	0.55 (0.72)	1,040 (40.9")	1,170 (46.1")	440 (970)	5	●	●	●	●	●
◆ 0.67 (0.88)	0.60 (0.78)	1,110 (43.7")	1,140 (44.9")	550 (1,210)	5	●	●	■	●	●
◆ 0.74 (0.97)	0.66 (0.86)	1,210 (47.6")	1,240 (48.8")	595 (1,310)	6	●	■	▲	●	●
0.50 (0.65)	0.45 (0.59)	760 (29.9")	800 (31.5")	440 (970)	4	●	●	●	●	●
0.61 (0.80)	0.54 (0.71)	915 (36.0")	950 (37.4")	490 (1,080)	5	●	●	●	●	●

◆ Hammerless tooth bucket

- : Applicable for materials with density of 2,100 kg/m³ (3,500 lb/yd³) or less
- : Applicable for materials with density of 1,800 kg/m³ (3,000 lb/yd³) or less
- : Applicable for materials with density of 1,500 kg/m³ (2,500 lb/yd³) or less
- ▲ : Applicable for materials with density of 1,200 kg/m³ (2,000 lb/yd³) or less
- x : Not Recommended

DIGGING FORCE

Boom	Length	mm (ft.in)	4600 (15' 1") Mono Boom			4,900 (16' 1") 2PC Boom		Remark
	Weight	kg (lb)	1,040 (2,290)			1,480 (3,260)		
Arm	Length	mm (ft.in)	2,100 (6' 11")	2,500 (8' 2")	3,000 (9' 10")	2,100 (6' 11")	2,500 (8' 2")	[] : Power Boost
	Weight	kg (lb)	590 (1,300)	640 (1,410)	680 (1,500)	600 (1,320)	660 (1,460)	
Bucket Digging Force	SAE	kN	94.3 [102.4]	94.3 [102.4]	94.3 [102.4]	95.1 [103.3]	95.1 [103.3]	
		kgf	9,620 [10,440]	9,620 [10,440]	9,620 [10,440]	9,700 [10,530]	9,700 [10,530]	
		lbf	21,200 [23,020]	21,200 [23,020]	21,200 [23,020]	21,380 [23,210]	21,380 [23,210]	
	ISO	kN	111.4 [121.0]	111.4 [121.0]	111.4 [121.0]	112.4 [122.0]	112.4 [122.0]	
		kgf	11,360 [12,330]	11,360 [12,340]	11,360 [12,330]	11,460 [12,440]	11,460 [12,440]	
		lbf	25,050 [27,190]	25,050 [27,190]	25,040 [27,190]	25,260 [27,430]	25,260 [27,430]	
Arm Crowd Force	SAE	kN	71.8 [77.9]	62.0 [67.4]	57.0 [61.9]	74.7 [81.1]	63.5 [69.0]	
		kgf	7,320 [7,940]	6,320 [6,870]	5,810 [6,310]	7,620 [8,270]	6,480 [7,040]	
		lbf	16,130 [17,510]	13,940 [15,140]	12,810 [13,910]	16,800 [18,230]	14,290 [15,520]	
	ISO	kN	75.1 [81.6]	64.6 [70.1]	59.1 [64.1]	78.3 [84.9]	66.2 [71.9]	
		kgf	7,660 [8,320]	6,590 [7,150]	6,020 [6,540]	7,980 [8,660]	6,750 [7,330]	
		lbf	16,900 [18,340]	14,520 [15,770]	13,280 [14,410]	17,590 [19,090]	14,880 [16,160]	

Note : Boom weight includes arm cylinder, piping, and pin
Arm weight includes bucket cylinder, linkage, and pin

STANDARD / OPTION

ENGINE	STD	OPT
Cummins F3.8		
Engine Auto Idle	●	
Engine Auto Shutdown Control	●	
Emergency Engine Stop Switch	●	
HYDRAULIC SYSTEM		
Intelligent Power Control (IPC) Upgrade		
3-Power Mode, 2-Work Mode, User Mode	●	
Variable Power Control	●	
Pump Flow Control	●	
Attachment Mode Flow Control		●
Hyundai Bio Hydraulic oil (HBHO)		●
CAB & INTERIOR		
ISO Standard Cabin		
Rise-Up Type Windshield Wiper	●	
Radio / USB Player	●	
Handsfree Mobile Phone System with USB	●	
12V Power Outlet (24V DC to 12V DC converter)	●	
Electric Horn	●	
All-Weather Steel Cab with 360° Visibility	●	
Safety glass - Tempered glass	●	
Safety glass - Tempered glass with front laminated glass		●
Sliding Fold-In Front Window	●	
Sliding Side Window (LH)	●	
Lockable Door	●	
Storage Compartment	●	
Ashtray & Cigar Lighter		●
Transparent Cabin Roof-Cover	●	
Sun Visor	●	
Door And Cab Locks, One Key	●	
Mechanical Suspension Seat With Heater	●	
Pilot-Operated Slidable Joystick	●	
Console Box Height Adjust System	●	
Automatic Climate Control		
Air Conditioner & Heater	●	
Defroster	●	
Starting Aid (Air Grid Heater) for Cold Weather	●	
Centralized Monitoring		
8" LCD Display	●	
Engine Speed or Trip Meter / Accel.	●	
Engine Coolant Temperature Gauge	●	
Max Power	●	
Low Speed / High Speed	●	
Auto Idle	●	
Overload warning with alarm		●
Check Engine	●	
Air Cleaner Clogging	●	
Indicators	●	
ECO Gauges	●	
Fuel Level Gauge	●	
Hyd. Oil Temperature Gauge	●	
Fuel Warmer	●	
Warnings	●	
Communication Error	●	
Low Battery	●	
Clock	●	
Cabin Lights	●	
Cabin Front Window Rain Guard		●
Cabin Roof-Steel Cover		●
Seat		
Adjustable Air Suspension Seat With Heater		●
Cabin FOG (ISO 10262) Level 2		
FOG (Falling Object Protective Structure) · ISO 10262Level 2		●
Cabin ROPS (ISO 12117-2)		
ROPS (Roll Over Protective Structures) · ISO 12117-2	●	

SAFETY	STD	OPT
Lifting Mode		●
Auto Safety Lock		●
Seatbelt Warning Alarm		●
Battery Master Switch		●
Rear View Camera		●
Rear & RH View Camera		●
AAVM (Advanced Around View Monitoring)		●
Four Front Working Lights (2 Boom Mounted, 2 Front Frame Mounted)		●
Travel Alarm		●
Beacon Lamp		●
Automatic Swing Brake		●
Boom Holding System		●
Arm Holding System		●
Safety Lock Valve For Boom Cylinder With Overload Warning Device		●
Safety Lock Valve For Arm Cylinder		●
Swing Lock System		●
Three Outside Rearview Mirror		●
Guardrail - Boxing Ring		●
ATTACHMENT		
Booms		
4.6 m, 15' 1" Mono		●
4.9 m, 16' 1" 2PC BOOM		●
Arms		
2.1 m, 6' 11"		●
2.5 m, 8' 2"		●
3.0 m, 9' 10"		●
OTHER		
Fuel Pre-Filter		●
Fuel Warmer		●
Pre-Cleaner		●
Coolant Heater		●
Self-Diagnostics System		●
Hi MATE (Remote Management System)		●
Batteries (2 X 12 V X 100 AH)		●
Fuel Filler Pump (20 lpm)		●
Single-Acting Piping Kit (Breaker, Etc.)		●
Double-Acting Piping Kit (Clamshell, Etc.)		●
Proportional Auxiliary Hydraulic System		●
2 Way Proportional RCV & Pedal Control Selection		●
Rotating Piping Kit		●
Bucket Line Dividing Kit		●
Air Compressor		●
Quick Coupler Piping		●
Quick Coupler		●
One Pedal Straight Travel System		●
Accumulator For Lowering Work Equipment		●
Pattern Change Valve (2 Patterns)		●
Fine (Cushion/Free) Swing Control		●
Tool Kit		●
UNDERCARRIAGE		
Lower Frame Under Cover		●
Dozer Blade		●
Track Shoes		
Triple Grousers Shoes (500 mm, 20")		●
Triple Grousers Shoes (600 mm, 24")		●
Triple Grousers Shoe (700 mm, 28")		●
Rubber Pad (500 mm, 20")		●
Track Pad - Bolting Type (600mm, 24")		●
Triple Grousers Shoe (700 mm, 28") - H/W		●
Triple Grousers Shoe (800 mm, 32") - H/W		●
Track Guard		●
Full Track Guard - H/W		●

* Standard and optional equipment may vary. Contact your Hyundai dealer for more information. The machine may vary according to International standards.

* The photos may include attachments and optional equipment that are not available in your area.

* Materials and specifications are subject to change without advance notice.

* All imperial measurements rounded off to the nearest pound or inch.

