

HX220 L

With Tier 3 / Stage IIIA Engine Installed



Head Office(Sales Office)
14F, GLOBAL R&D CENTER, 477 BUNDANG SUSEO-RO, BUNDANG-GU, SEONGNAM-SI, GYEONGGI-DO, 13553, KOREA

PLEASE CONTACT

Gross Power
166 HP (124 kW) at 2,050 rpm

Net Power
163 HP (122 kW) at 2,050 rpm

Bucket Capacity
0.92 ~ 1.34m³

Operating Weight
21,970 kg / (48,440 lb)

RULE THE GROUND

HX Series exceeds customer's expectation!
Become a true leader on the ground with HCE's HX series.

HX220 L

WORK MAX, WORTH MAX

- IPC (Intelligent Power Control) **Upgrade**
- Attachment Flow Control **Option**
- New Variable Power Control
- Fuel Rate Information
- ECO Gauge
- New Cooling System with Increased Air Flow
- Enlarged Air Inlet with Grill Cover

MORE RELIABLE, MORE SUSTAINABLE

- Durable Cooling Module
- Reinforced Pin, Bush, and Polymer Shim
- Reinforced Durability of Upper and Lower Structure and Attachments
- Wear Resistant Cover Plate
- Hi-grade (High-pressure) Hoses

INFOTAINMENT FRONTIER

- Proportional Auxiliary Hydraulic System **Option**
- Quick Coupler Button **Option**
- New Front Side Air-conditioning System
- Intelligent and Wide Cluster
- New Air Conditioning System
- Audio System



MODERN COMFORT, SIMPLE AND SAFE SOLUTION

- AAVM (Advanced Around View Monitoring) Camera System **Option**
- Hi MATE (Remote Management System) **Option**
- Swing Lock System **Option**
- Fine Swing Control **Option**
- Cab Suspension Mount

* Photo may include optional equipment.

15% increased greater screen from 7 to 8 inch is applied in HX Series. More functions and better resolution are available with adding premium options.

IPC (Intelligent Power Control)

Upgrade

HX-LT3 Series adopts the upgraded IPC system. It is able to optimize pump flow rate and power at the various working condition through the individual pump control. Furthermore, optimized design of MCV and pipe line minimizes energy loss such as conflux and throttle loss.



Attachment Flow Control Option

HX Series improves pump flow rate by independent control of two pumps. It optimizes attachments for effective flow rate setting depending on attachments (ten breaker types and ten crusher types), enabling various operations matching the site environments.



Eco Gauge

Eco gauge enables economic operation of machines. The gauge level and color displays engine torque and fuel efficiency level. On top of that, the status of fuel consumption such as average rate and the total amount of fuel consumed is displayed. Hourly and daily based fuel consumption can be checked in the detailed menu as well.

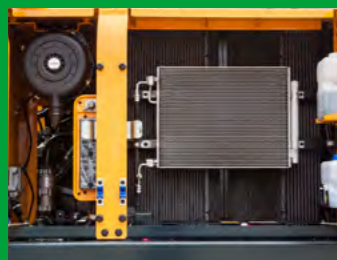


Fuel Rate Information



New Cooling System with Increased Air Flow

With the three-floor vertically placed cooling module improving air inflow, HX Series provides excellent cooling performance by increasing heat dissipation and can be easily cleaned.



Enlarged Air Inlet with Grill Cover

Enlarged vent hole of the air inlet side cover and fine net grill to prevent penetration of foreign materials further improve durability.



New Variable Power Control

HX Series minimizes equipment input and output control signals to improve fuel efficiency. Its three-stage power mode ensures the highest performance in any operating environment.



* P (power) mode : Maximizes speed and power of the equipment for heavy load work.



* S (standard) mode : Optimizes performance and fuel efficiency of the equipment for general load work.



* E (economy) mode : Improves the control system for light load work.

BETTER FUEL-EFFICIENCY

(Compared to 9 Series)

Daily Fuel Efficiency

19%



WORK MAX, WORTH MAX

Fuel Efficient System Allows Great Performance

HX Series has an eco-friendly, high-performance engine which ensures both excellent fuel efficiency and high power. With outstanding operating performance proven by rigorous tests at various work sites, it will satisfy any customer's needs.

* Photo may include optional equipment.



MORE RELIABLE, MORE SUSTAINABLE


New Exterior Design for Robustness and Safety

The true value of HX Series lies in its durability. The robust frame structure and the attachments show the real value of HX Series in tough working environments and promise higher productivity.



* Photo may include optional equipment.



We make the best performance in rough working conditions without any unsureness with trustworthy HX220L. 

Durable Cooling Module

HX Series has a durable cooling module that passed stringent tests, demonstrating the highest productivity in tough working environments.

Reinforced Durability of Upper and Lower Structure and Attachments

The upper and lower structure and attachments of HX Series have higher durability than demanded on the site, as proven through numerous tests including road tests and virtual simulation. The wear resistance of the bucket has been improved by use of new material.



Reinforced Pins, Bushing, and Polymer Shims

HX Series improves lubricity of connecting parts between the equipment and attachments. Gaps with attachments are minimized by wear-resistant long-life pins, bushes, and polymer shims, supporting the highest performance with invariable durability.



Wear Resistant Cover Plate

A wear-resistant cover plate is installed at the end of the arm to minimize abrasion on the connector between the arm and the bucket. Vibration reduction of buckets enables more stable operation even in high-load work.

Hi-grade (High-pressure) Hoses

HX Series uses high-pressure hoses with improved heat and pressure resistance, greatly increasing the durability of the equipment.

13%

CABIN SPACE FOR DRIVERS
INCREASED BY
(compared to the previous model)

310mm

340mm



INFOTAINMENT FRONTIER

Improved Instrument Panel for Easier Monitoring

Many electronic functions are concentrated in the most convenient spot for operators to improve work efficiency. The highly-advanced infotainment system, a product of HCE's intensive information technology development, enables both productivity and comfort while working! HX Series is designed with the operator in mind.

* Photo may include optional equipment.

New Front Side Air-conditioning System

The ventilation is designed for both warm and cool air reaching to operator's faces. It could help operators create more neat and enjoyable atmosphere through indoor air circulation.



New Audio System

The radio player with a USB-based MP3 player, an integrated Bluetooth hands-free feature, and a built-in microphone allow for phone calls while at work and in transit. The radio player is conveniently located on the right side of the operator to allow for improved access.



Quick Coupler Button Option

Easy attachment replacement of equipment is available with quick coupler button.



Proportional Auxiliary Hydraulic System Option

Proportional control switch with better speed control helps operators to enlarge the operation convenience whenever they do time-consuming work.



Intelligent and Wide Cluster

The 8" capacitive-type display (like smartphone display) of HX Series is delivering excellent legibility. The centralized switches on the display allow convenience of checking the urea level and temperature outside the cabin.



New Air Conditioning System

Front side Air Vent holes make operators more convenient and fresh through direct air flow to driver's face, foot and body.





MODERN COMFORT, SIMPLE AND SAFE SOLUTION

New Cabin for More Comfort

Low noise, low vibration, and ergonomic design make the cabin space more comfortable and pleasant! With focus on safety and convenience of operators, HX Series allows rapid and safe equipment inspection anytime and anywhere, providing an optimal environment for operators to work.



Hi MATE

Option

IT'S CONVENIENT, EASY AND VALUABLE

Hi MATE Hyundai's newly developed remote management system, utilizes GPS-satellite technology to provide customers with the highest level of service and product support available. Hi MATE enables users to remotely evaluate machine performance, access diagnostic information, and verify machine locations at the touch of a button.

WHAT IS BENEFITS



Increase Productivity

It helps you operate machines in efficient. You can check the difference between total engine hours and actual working hours. See how productive your machines are and plan any required cost saving solutions. Hi MATE offers working information such as working / idling hours, fuel consumption and rate.



Convenient and Easy Monitoring

There is nothing much to do to monitor your machines. Just log on to the Hi MATE website or mobile application. Hi MATE allows you to watch your machines whenever and wherever you are.



Security

Protect your machines from theft or unauthorized usage with Hi MATE. If the machine moves out of the Geo-fence boundary, you will get alerts.

* Photo may include optional equipment.



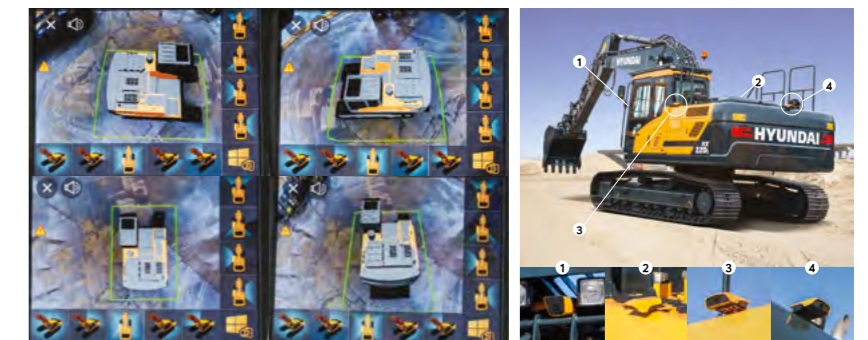
HX220L with advanced technology ensures our safety on a construction site. //

HX Series excavators are products of HCE's spirit of initiative, creativity, and strong drive. HCE engineers, who are the best in the industry, have worked tirelessly to offer a zero-defect product. The new HX Series reflects customers' needs in the field gleaned by thorough monitoring.

AAVM(Advanced Around View Monitoring) Camera System **Option**

HX Series has a state-of-the-art AAVM video camera system to secure field of vision for operators in all directions, thereby preventing accidents. Operators can easily check the workplace in the front and rear and to the right and left.

- AAVM(Advanced Around View Monitoring) : Secure field of vision in all directions by nine views including 3D bird's eye view and 2D/4CH view.
- IMOD(Intelligent Moving Object Detection) : Inform when people or dangerous objects are detected within the range of operation(recognition distance : 5 m).



Swing Lock System **Option**

Swing lock system is provided to maintain stability when swing movement needs to be limited, improving operating speed and productivity.

Fine Swing Control **Option**

Fine swing control is available for customer's convenience when users want to control fine swing.

Cabin Suspension Mount

With a low-vibration design by the coil spring and damper inside the mount, the cab suspension mount of HX Series reduces noise inside the cabin and improves durability, providing a comfortable operation space that lessens operators' fatigue.

HX220 L SPECIFICATIONS

ENGINE

Maker / Model	CUMMINS / QSB7
Type	Turbocharged, Charged air cooled, Diesel engine
Gross Power	166 HP (124 kW) at 2,050 rpm
Net Power	163 HP (122 kW) at 2,050 rpm
Max. Power(Gross)	167 HP (125 kW) at 2,000 rpm
Peak Torque	657 Nm (485 lbft) at 900 r pm
Displacement	6,700 cc (409 cu in)

HYDRAULIC SYSTEM

MAIN PUMP	
Type	Variable displacement tandem axis piston pumps
Max. flow	2 x 228 l/min
Sub-pump for pilot circuit	Gear pump

* Cross-sensing and fuel saving pump system

HYDRAULIC MOTORS

Travel	Two speed axial pistons motor with brake valve and parking brake
Swing	Axial piston motor with automatic brake

RELIEF VALVE SETTING

Implement circuits	350 kgf/cm ² (4980psi)
Travel	350 kgf/cm ² (4980psi)
Power boost (boom, arm, bucket)	380 kgf/cm ² (5400psi)
Swing circuit	265 kgf/cm ² (3770psi)
Pilot circuit	40 kgf/cm ² (570psi)
Service valve	Installed

HYDRAULIC CYLINDERS

No. of cylinder bore X stroke	Boom: 2-∅120x1,290 mm Arm: 1-∅140x1,443 mm Bucket: 1-∅160x1,060 mm
-------------------------------	--

* Hyundai Bio Hydraulic Oil (HBHO) available

DRIVES & BRAKES

Drive method	Fully hydrostatic type
Drive motor	Axial piston motor, in-shoe design
Reduction system	Planetary reduction gear
Max. drawbar pull	21.100 kgf (46,517 lbf)
Max. travel speed (high / low)	5.6km/hr (3.48 mph) / 3.6km/hr (2.24 mph)
Gradeability	35° (70%)
Parking brake	Multi wet disc

CONTROL

Pilot pressure operated joysticks and pedals with detachable lever provide almost effortless and fatigueless operation.

Pilot control	Two joysticks with one safety lever (LH): Swing and arm, Boom and bucket
Traveling and steering	Two levers with pedals
Engine throttle	Electric, Dial type

SWING SYSTEM

Swing motor	Fixed displacement axial piston motor
Swing reduction	Planetary gear reduction
Swing bearing lubrication	Grease-bathed
Swing brake	Multi wet disc
Swing speed	11.4 rpm

COOLANT & LUBRICANT CAPACITY

	liter	US gal	UK gal
Fuel tank	400	106	88
Engine coolant	31	8.2	6.82
Engine oil	23.1	6.1	5.1
Swing device	6.2	1.64	1.36
Final drive (each)	4.5	1.2	1
Hydraulic system (including tank)	275	72.6	60.5
Hydraulic tank	160	42.3	35.2

UNDERCARRIAGE

The X-leg type center frame is integrally welded with reinforced box-section track frames. The undercarriage includes lubricated rollers, idlers, track adjusters with shock absorbing springs and sprockets, and a track chain with double or triple grouser shoes.

model	HX220L	HX220
Center frame	X-Leg Type	X - leg type
Track frame	Pentagonal box type	Pentagonal box type
No. of shoes on each side	49 EA	46 EA
No. of carrier roller on each side	2 EA	2 EA
No. of track roller on each side	8 EA	7 EA
No. of rail guard on each side	2 EA	1 EA

OPERATING WEIGHT (APPROXIMATE)

Operating weight, including 5,700mm (18' 8") boom, 2,900mm (9' 6") arm, SAE heaped 0.92m³ (1.20 yd³) bucket, lubricant, coolant, full fuel tank, full hydraulic tank, and all standard equipments.

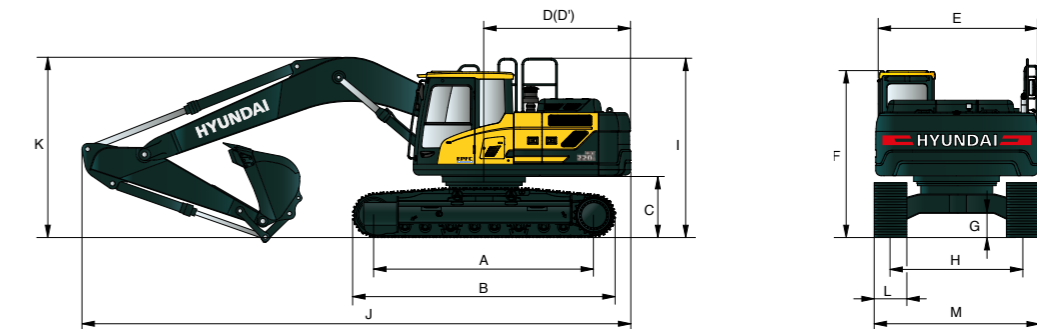
OPERATING WEIGHT

Shoes		Operating weight		Ground pressure
Type	Width mm (in)	kg (lb)		kgf/cm ² (psi)
Triple grouser	600 (24")	HX220 T3	21,610 (47,640)	0.50 (7.31)
		HX220 L T3	21,970 (48,440)	0.47 (6.67)
		HX220 L HW T3	24,080 (53,090)	0.51 (7.31)
	700 (28")	HX220 L T3	22,430 (49,450)	0.41 (5.84)
		HX220 L HW T3	24,350 (53,680)	0.45 (6.34)
		800 (32")	HX220 T3	22,140 (48,810)
HX220 L T3	22,710 (50,070)		0.36 (5.17)	
HX220 L HW T3	24,630 (54,300)		0.39 (5.61)	
900 (36")	HX220 LR T3	24,700 (54,450)	0.40 (5.62)	
	HX220 L T3	22,990 (50,680)	0.33 (4.65)	
	HX220 L HW T3	24,910 (54,920)	0.35 (5.04)	
Double grouser	700 (28")	HX220 L HW T3	22,600 (49,820)	0.41 (5.88)
		HX220 L HW T3	24,520 (54,060)	0.45 (6.38)

HX220 L DIMENSIONS & WORKING RANGE

HX220 DIMENSIONS

5.70 m (18' 8") BOOM and 2.0 m (6' 7"), 2.4 m (7' 10"), 2.9 m (9' 6"), 3.5 m (11' 6") ARM



Unit : mm (ft - in)

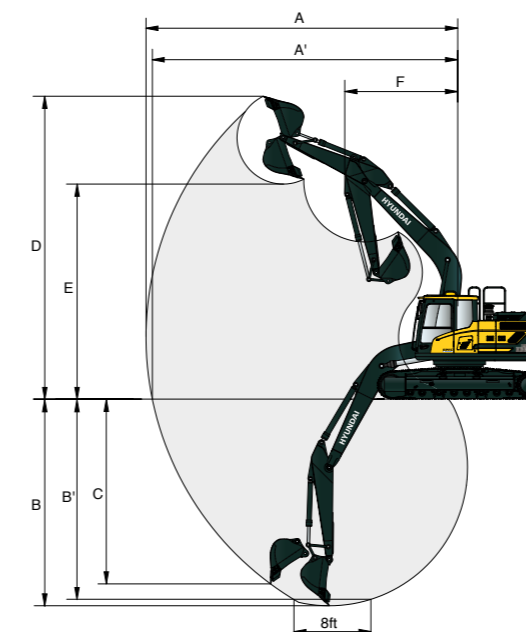
A	Tumbler distance	3,270 (10' 9")
*B	Overall length of crawler	4,066 (13' 4")
C	Ground clearance of counterweight	1,095 (3' 7")
D	Tail swing radius	2,890 (9' 5")
D'	Rear-end length	2,770 (9' 1")
E	Overall width of upperstructure	2,740 (9' 0")
F	Overall height of cab	3,035 (9' 11")
G	Min. ground clearance	475 (1' 7")
H	Track gauge	2,200 (7' 3")
I	Overall height of guardrail	3,245 (10' 8")

* This figure includes the size of grousers.

Boom length	5,700 (18' 8")			
Arm length	2,000 (6' 7")	2,400 (7' 10")	2,900 (9' 6")	3,500 (11' 6")
J Overall length	9,620 (31' 7")	9,575 (31' 5")	9,550 (31' 4")	9,560 (31' 4")
K Overall height of boom	3,115 (10' 3")	3,020 (9' 11")	2,960 (9' 9")	3,320 (10' 11")
L Track shoe width	600 (24")		800 (32")	
M Overall width	2,800 (9' 2")		3,000 (9' 10")	

HX220 WORKING RANGE

Unit : mm (ft - in)

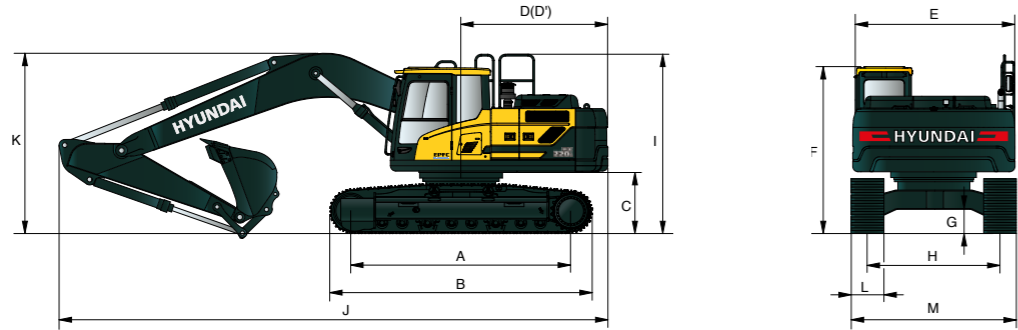


Boom length	5,700 (18' 8")			
Arm length	2,000 (6' 7")	2,400 (7' 10")	2,900 (9' 6")	3,500 (11' 6")
A Max. digging reach	9,145 (30' 0")	9,525 (31' 3")	9,945 (32' 8")	10,450 (34' 3")
A' Max. digging reach on ground	8,960 (29' 5")	9,355 (30' 8")	9,780 (32' 1")	10,290 (33' 9")
B Max. digging depth	5,585 (18' 4")	5,990 (19' 8")	6,500 (21' 4")	7,090 (23' 3")
B' Max. digging depth (8' level)	5,360 (17' 7")	5,790 (19' 0")	6,315 (20' 9")	6,935 (22' 9")
C Max. vertical wall digging depth	5,070 (16' 8")	5,445 (17' 10")	5,960 (19' 7")	6,330 (20' 9")
D Max. digging height	9,370 (30' 9")	9,625 (31' 7")	9,750 (32' 0")	9,890 (32' 5")
E Max. dumping height	6,580 (21' 7")	6,830 (22' 5")	6,990 (22' 11")	7,160 (23' 6")
F Min. swing radius	3,715 (12' 2")	3,400 (11' 2")	3,425 (11' 3")	3,445 (11' 4")

DIMENSIONS & WORKING RANGE

HX220L DIMENSIONS

5.70 m (18' 8") BOOM and 2.0 m (6' 7"), 2.4 m (7' 10"), 2.9 m (9' 6"), 3.5 m (11' 6") ARM



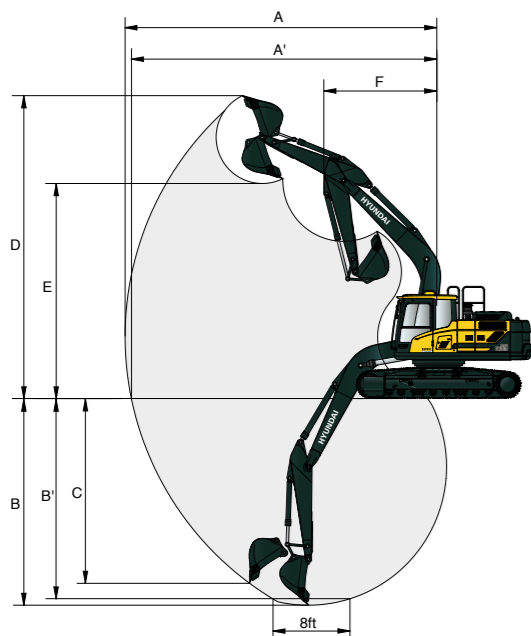
Unit : mm (ft · in)

A	Tumbler distance	3,650 (12' 0")
*B	Overall length of crawler	4,443 (14' 7")
C	Ground clearance of counterweight	1,095 (3' 7")
D	Tail swing radius	2,890 (9' 6")
D'	Rear-end length	2,770 (9' 1")
E	Overall width of upperstructure	2,740 (9' 0")
F	Overall height of cab	3,035 (9' 11")
G	Min. ground clearance	475 (1' 7")
H	Track gauge	2,390 (7' 10")
I	Overall height of guardrail	3,245 (10' 8")

Boom length	5,700 (18' 8")					
Arm length	2,000 (6' 7")	2,400 (7' 10")	2,900 (9' 6")	3,500 (11' 6")		
J Overall length	9,620 (31' 7")	9,575 (31' 5")	9,550 (31' 4")	9,560 (31' 4")		
K Overall height of boom	3,115 (10' 3")	3,020 (9' 11")	2,960 (9' 9")	3,320 (10' 11")		
L Track shoe	Triple grouser				Double grouser	
	width	600 (24")	700 (28")	800 (32")	900 (36")	700 (28")
M Overall width	2,990 (9' 10")	3,090 (10' 2")	3,190 (10' 6")	3,290 (10' 10")	3,090 (10' 2")	

*This figure includes the size of grousers.

HX220L WORKING RANGE

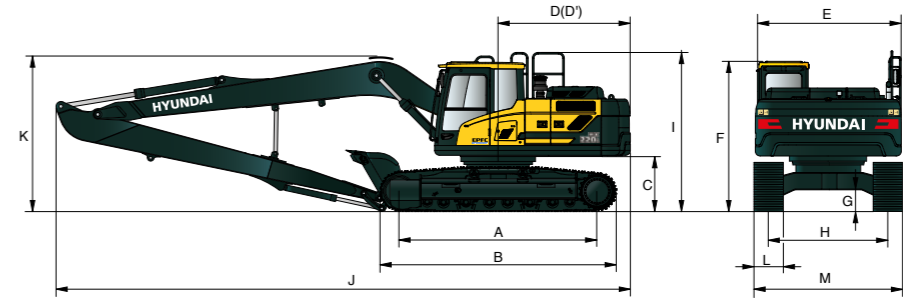


Unit : mm (ft · in)

Boom length	5,700 (18' 8")				
Arm length	2,000 (6' 7")	2,400 (7' 10")	2,900 (9' 6")	3,500 (11' 6")	
A Max. digging reach	9,145 (30' 0")	9,525 (31' 3")	9,945 (32' 8")	10,450 (34' 3")	
A' Max. digging reach on ground	8,960 (29' 5")	9,355 (30' 8")	9,780 (32' 1")	10,290 (33' 9")	
B Max. digging depth	5,585 (18' 4")	5,990 (19' 8")	6,500 (21' 4")	7,090 (23' 3")	
B' Max. digging depth (8' level)	5,360 (17' 7")	5,790 (19' 0")	6,315 (20' 9")	6,935 (22' 9")	
C Max. vertical wall digging depth	5,070 (16' 8")	5,445 (17' 10")	5,960 (19' 7")	6,330 (20' 9")	
D Max. digging height	9,370 (30' 9")	9,625 (31' 7")	9,750 (32' 0")	9,890 (32' 5")	
E Max. dumping height	6,580 (21' 7")	6,830 (22' 5")	6,990 (22' 11")	7,160 (23' 6")	
F Min. swing radius	3,715 (12' 2")	3,400 (11' 2")	3,425 (11' 3")	3,445 (11' 4")	

HX220L LONG REACH

8.5 m (27' 11") BOOM and 6.2 m (20' 4") ARM



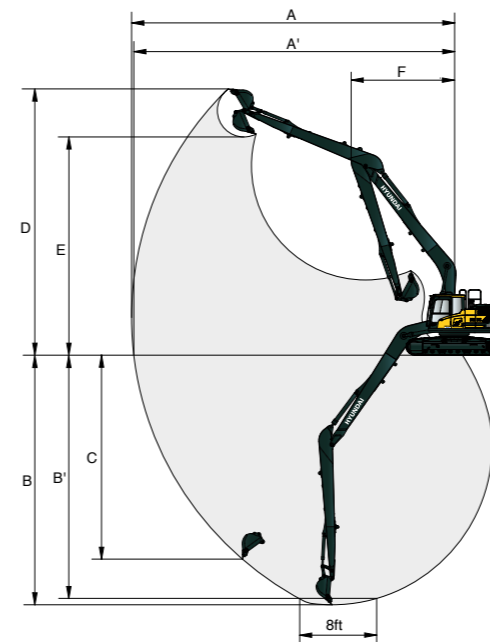
Unit : mm (ft · in)

A	Tumbler distance	3,650 (12' 0")
*B	Overall length of crawler	4,443 (14' 7")
C	Ground clearance of counterweight	1,095 (3' 7")
D	Tail swing radius	2,890 (9' 6")
D'	Rear-end length	2,770 (9' 1")
E	Overall width of upperstructure	2,740 (9' 0")
F	Overall height of cab	3,035 (9' 11")
G	Min. ground clearance	475 (1' 7")
H	Track gauge	2,390 (7' 10")
I	Overall height of guardrail	3,245 (10' 8")

Boom length	8,500 (27' 11")
Arm length	6,200 (20' 4")
J Overall length	12,345 (40' 6")
K Overall height of boom	3,365 (11' 0")
L Track shoe width	800 (32")
M Overall width	3,190 (10' 6")

*This figure includes the size of grousers.

HX220L LONG REACH WORKING RANGE



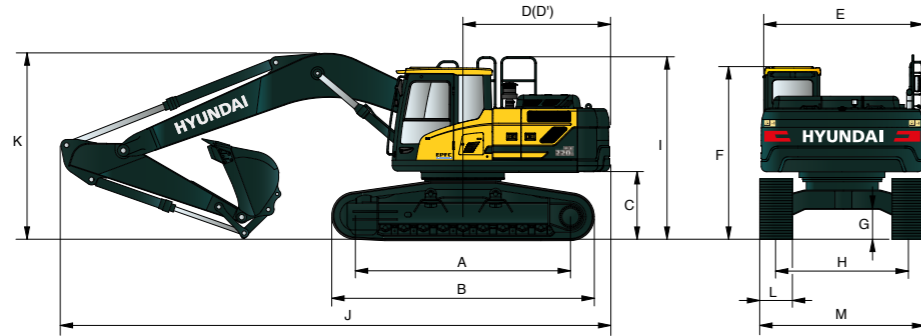
Unit : mm (ft · in)

Boom length	8,500 (27' 11")
Arm length	6,200 (20' 4")
A Max. digging reach	15,425 (50' 7")
A' Max. digging reach on ground	15,320 (50' 3")
B Max. digging depth	11,500 (37' 9")
B' Max. digging depth (8' level)	11,355 (37' 3")
C Max. vertical wall digging depth	10,265 (33' 8")
D Max. digging height	13,445 (44' 1")
E Max. dumping height	11,200 (36' 9")
F Min. swing radius	4,705 (15' 5")

HX220 L DIMENSIONS & WORKING RANGE

HX220L HIGH WALKER DIMENSIONS

5.70 m (18' 8") BOOM and 2.0 m (6' 7"), 2.4 m (7' 10"), 2.9 m (9' 6"), 3.5 m (11' 6") ARM



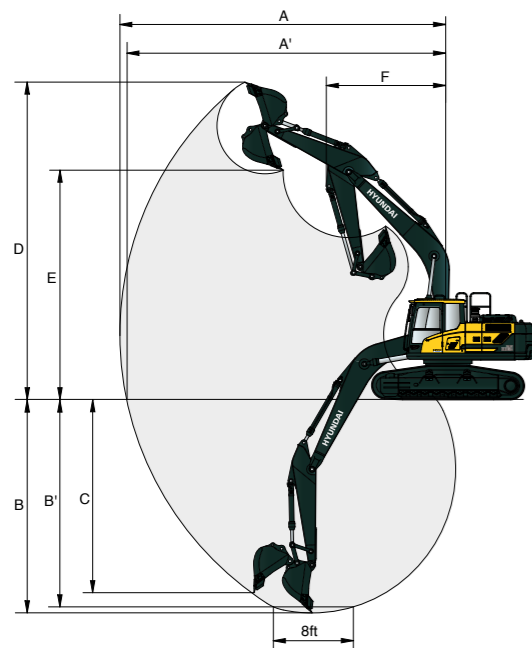
Unit : mm (ft. in)

A	Tumbler distance	3,650 (12' 0")
*B	Overall length of crawler	4,470 (14' 8")
C	Ground clearance of counterweight	1,260 (4' 2")
D	Tail swing radius	2,890 (9' 6")
D'	Rear-end length	2,770 (9' 1")
E	Overall width of upperstructure	2,740 (9' 0")
F	Overall height of cab	3,200 (10' 6")
G	Min. ground clearance	660 (2' 2")
H	Track gauge	2,795 (9' 2")
I	Overall height of guardrail	3,410 (11' 2")

*This figure includes the size of grousers.

Boom length		5,700 (18' 8")				
Arm length		2,000 (6' 7")	2,400 (7' 10")	2,900 (9' 6")	3,500 (11' 6")	
J	Overall length	9,625 (31' 7")	9,560 (31' 4")	9,515 (31' 3")	9,575 (31' 5")	
K	Overall height of boom	3,195 (10' 6")	3,090 (10' 2")	2,975 (9' 9")	3,275 (10' 9")	
L	Track shoe	Triple grouser				Double grouser
	width	600 (24")	700 (28")	800 (32")	900 (36")	700 (28")
M	Overall width	3,395 (11' 2")	3,495 (11' 6")	3,595 (11' 10")	3,695 (12' 1")	3,495 (11' 6")

HX220L HIGH WALKER WORKING RANGE

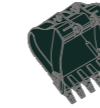


Unit : mm (ft. in)

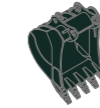
Boom length		5,700 (18' 8")				
Arm length		2,000 (6' 7")	2,400 (7' 10")	2,900 (9' 6")	3,500 (11' 6")	
A	Max. digging reach	9,145 (30' 0")	9,525 (31' 3")	9,945 (32' 8")	10,450 (34' 3")	
A'	Max. digging reach on ground	8,920 (29' 3")	9,310 (30' 7")	9,740 (31' 11")	10,255 (33' 8")	
B	Max. digging depth	5,385 (17' 8")	5,785 (19' 0")	6,290 (20' 8")	6,890 (22' 7")	
B'	Max. digging depth (8' level)	5,160 (16' 11")	5,590 (18' 4")	6,115 (20' 1")	6,735 (22' 1")	
C	Max. vertical wall digging depth	4,870 (16' 0")	5,245 (17' 2")	5,760 (18' 11")	6,130 (20' 1")	
D	Max. digging height	9,570 (31' 5")	9,825 (32' 3")	9,950 (32' 8")	10,090 (33' 1")	
E	Max. dumping height	6,780 (22' 3")	7,030 (23' 1")	7,190 (23' 7")	7,360 (24' 2")	
F	Min. swing radius	3,715 (12' 2")	3,340 (10' 11")	3,425 (11' 3")	3,445 (11' 4")	

HX220 L BUCKET SELECTION GUIDE & DIGGING FORCE

BUCKETS



GP
0.92 (1.20)
1.17 (1.53)
1.28 (1.67)



HD
0.92 (1.20)
1.08 (1.41)



LR
0.51 (0.67)

SAE heaped
m³ (yd³)

Capacity m ³ (yd ³)	Width mm (in)		Weight kg (lb)	Tooth (EA)	Recommendation mm (ft.in)					
					5,700 (18' 8") Boom				8,500 (27' 11") Boom	
					2,000 (6' 7") Arm	2,400 (7' 10") Arm	2,900 (9' 6") Arm	3,500 (11' 6") Arm		6,200 (20' 4") Arm
0.92 (1.20)	0.81 (1.05)	1,085 (42.7)	1,230 (48.4)	750 (1,650)	5	●	●	●	●	-
1.17 (1.53)	1.00 (1.31)	1,340 (52.8)	1,490 (58.7)	850 (1,870)	6	●	●	■	▲	-
1.28 (1.67)	1.11 (1.45)	1,455 (57.3)	1,605 (63.2)	885 (1,950)	6	●	■	■	▲	-
0.92 (1.20)	0.83 (1.09)	1,050 (41.3)	1,095 (43.1)	865 (1,910)	5	●	●	●	●	-
1.08 (1.41)	0.97 (1.27)	1,200 (47.2)	1,245 (49.0)	935 (2,060)	5	●	●	●	■	-
0.51 (0.67)	0.45 (0.59)	865 (34.1)	995 (39.2)	395 (0,870)	5	-	-	-	-	■

● General Purpose
◆ Heavy duty bucket
★ Long reach bucket

● : Applicable for materials with density of 2,100 kg/m³ (3,500 lb/yd³) or less
◆ : Applicable for materials with density of 1,800 kg/m³ (3,000 lb/yd³) or less
■ : Applicable for materials with density of 1,500 kg/m³ (2,500 lb/yd³) or less
▲ : Applicable for materials with density of 1,200 kg/m³ (2,000 lb/yd³) or less
- : Not Recommended

ATTACHMENT

Booms and arms are welded with a low-stress, full-box section design.
5.70 m, 8.5 m Booms and 2.0 m, 2.4 m, 2.9 m, 3.5 m & 6.2 m Arms are available.

DIGGING FORCE

Boom	Length	mm (ft.in)	5,700 (18' 8")					8,500 (27' 11")	Remark
	Weight	kg (lb)	1,865 (4,110)					2,380 (5,250)	
Arm	Length	mm (ft.in)	2,000 (6' 7")	2,400 (7' 10")	2,900 (9' 6")	3,500 (11' 6")	6,200 (20' 4")	[] : Power Boost	
	Weight	kg (lb)	820 (1,810)	900 (1,980)	985 (2,170)	1,130 (2,490)	1,295 (2,850)		
Bucket Digging Force	SAE	kN	130.4 [141.6]	130.4 [141.6]	130.4 [141.6]	130.4 [141.6]	68.0		
		kgf	13,300 [14,440]	13,300 [14,440]	13,300 [14,440]	13,300 [14,440]	6,930		
		lbf	29320 [31,380]	29320 [31,380]	29320 [31,380]	29320 [31,380]	15,280		
	ISO	kN	152.3 [165.3]	152.3 [165.3]	152.3 [165.3]	152.3 [165.3]	80.3		
		kgf	15,530 [16,860]	15,530 [16,860]	15,530 [16,860]	15,530 [16,860]	8,190		
		lbf	34,240 [37,170]	34,240 [37,170]	34,240 [37,170]	34,240 [37,170]	18,060		
Arm Crowd Force	SAE	kN	144.3 [156.6]	119.3 [129.4]	102.8 [111.6]	92.2 [100.1]	49.5		
		kgf	14,710 [15,970]	12,160 [13,200]	10,480 [11,380]	9,400 [10,210]	5,050		
		lbf	32,430 [35,210]	26,810 [29,100]	23,100 [25,090]	20,720 [22,510]	11,130		
	ISO	kN	152.0 [165.0]	124.7 [135.4]	106.9 [116.0]	95.4 [103.6]	50.5		
		kgf	15,500 [16,830]	12,720 [13,810]	10,900 [11,830]	9,730 [10,560]	5,150		
		lbf	34,170 [37,100]	28,040 [30,450]	24,030 [26,080]	21,450 [23,280]	11,350		

Note : Boom weight includes arm cylinder, piping, and pin
Arm weight includes bucket cylinder, linkage, and pin

HX220 L

LIFTING CAPACITY

Rating over-front Rating over-side or 360 degree

HX220

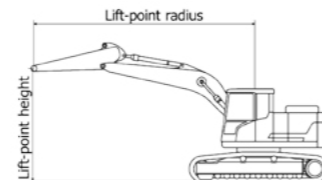
5.70 m (18' 8") Mono boom, 2.00 m (6' 7") arm and 600mm(38") Triple grouser shoe.

Load point height m (ft)	Lift-point radius								At max. reach			
	3.0m (9.8ft)		4.5m (14.8ft)		6.0m (19.7ft)		7.5m (24.6ft)		Capacity		Reach	
											m (ft)	
7.5m 24.6ft	kg									*6,130	*6,130	5.05
	lb									*13,510	*13,510	(16.6)
6.0m 19.7ft	kg		*6,170	*6,170	*5,780	4,740				*5,810	4,260	6.39
	lb		*13,600	*13,600	*12,740	10,450				*12,810	9,390	(21.0)
4.5m 14.8ft	kg		*7,370	7,090	*6,130	4,610				5,280	3,490	7.17
	lb		*16,250	15,630	*13,510	10,160				11,640	7,690	(23.5)
3.0m 9.8ft	kg				6,790	4,410	4,850	3,180		4,770	3,130	7.58
	lb				14,970	9,720	10,690	7,010		10,520	6,900	(24.9)
1.5m 4.9ft	kg				6,580	4,220	4,770	3,110		4,620	3,010	7.67
	lb				14,510	9,300	10,520	6,860		10,190	6,640	(25.2)
0.0m 0.0ft	kg		10,030	6,070	6,460	4,110				4,760	3,090	7.46
	lb		22,110	13,380	14,240	9,060				10,490	6,810	(24.5)
-1.5m -4.9ft	kg		10,050	6,090	6,450	4,100				5,300	3,430	6.92
	lb		22,160	13,430	14,220	9,040				11,680	7,560	(22.7)
-3.0m -9.8ft	kg	*11,600	*11,600	*8,810	6,220					*6,360	4,270	5.95
	lb	*25,570	*25,570	*19,420	13,710					*14,020	9,410	(19.5)

5.70 m (18' 8") Mono boom, 2.40 m (7' 10") arm and 600mm(38") triple grouser shoe.

Load point height m (ft)	Lift-point radius								At max. reach			
	3.0m (9.8ft)		4.5m (14.8ft)		6.0m (19.7ft)		7.5m (24.6ft)		Capacity		Reach	
											m (ft)	
7.5m 24.6ft	kg									*5,580	5,290	5.62
	lb									*12,300	11,660	(18.4)
6.0m 19.7ft	kg				*5,340	4,780				*5,390	3,820	6.85
	lb				*11,770	10,540				*11,880	8,420	(22.5)
4.5m 14.8ft	kg		*6,820	*6,820	*5,770	4,640	4,930	3,250		4,840	3,190	7.58
	lb		*15,040	*15,040	*12,720	10,230	10,870	7,170		10,670	7,030	(24.9)
3.0m 9.8ft	kg		*8,560	6,640	*6,520	4,410	4,850	3,180		4,410	2,890	7.97
	lb		*18,870	14,640	*14,370	9,720	10,690	7,010		9,720	6,370	(26.1)
1.5m 4.9ft	kg		*9,990	6,200	6,570	4,200	4,740	3,080		4,270	2,780	8.06
	lb		*22,020	13,670	14,480	9,260	10,450	6,790		9,410	6,130	(26.4)
0.0m 0.0ft	kg		9,980	6,020	6,420	4,070	4,680	3,020		4,390	2,840	7.85
	lb		22,000	13,270	14,150	8,970	10,320	6,660		9,680	6,260	(25.8)
-1.5m -4.9ft	kg	*9,270	*9,270	9,950	6,000	6,380	4,030			4,820	3,110	7.34
	lb	*20,440	*20,440	21,940	13,230	14,070	8,880			10,630	6,860	(24.1)
-3.0m -9.8ft	kg	*12,590	11,650	*9,230	6,100	6,470	4,110			5,870	3,770	6.44
	lb	*27,760	25,680	*20,350	13,450	14,260	9,060			12,940	8,310	(21.1)
-4.5m -14.8ft	kg		*6,620	6,380								
	lb		*14,590	14,070								

- Lifting capacity are based on ISO 10567.
- Lifting capacity of HX Series does not exceed 75% of tipping load with the machine on firm, level ground or 87% of full hydraulic capacity.
- The Lift-point is bucket pivot mounting pin on the arm (without bucket mass).
- (*) indicates load limited by hydraulic capacity.



Rating over-front Rating over-side or 360 degree

HX220

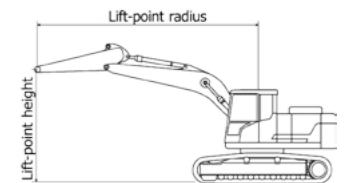
5.70 m (18' 8") Mono boom, 2.90 m (9' 6") arm and 600mm(38") triple grouser shoe.

Load point height m (ft)	Lift-point radius								At max. reach					
	1.5m (4.9ft)		3.0m (9.8ft)		4.5m (14.8ft)		6.0m (19.7ft)		7.5m (24.6ft)		Capacity		Reach	
													m (ft)	
7.5m 24.6ft	kg									*4,920	4,850		6.21	
	lb									*10,850	10,690		(20.4)	
6.0m 19.7ft	kg									*4,830	*4,830		7.34	
	lb									*10,650	*10,650		(24.1)	
4.5m 14.8ft	kg					*6,130	*6,130	*5,330	4,680	*4,960	3,280	*3,960	2,920	8.03
	lb					*13,510	*13,510	*11,750	10,320	*10,930	7,230	*8,730	6,440	(26.3)
3.0m 9.8ft	kg					*7,880	6,750	*6,120	4,440	4,860	3,180	*4,060	2,650	8.39
	lb					*17,370	14,880	*13,490	9,790	10,710	7,010	*8,950	5,840	(27.5)
1.5m 4.9ft	kg					*9,500	6,260	6,580	4,200	4,730	3,060	3,940	2,550	8.48
	lb					*20,940	13,800	14,510	9,260	10,430	6,750	8,690	5,620	(27.8)
0.0m 0.0ft	kg			*4,930	*4,930	9,950	5,990	6,390	4,030	4,630	2,970	4,030	2,590	8.29
	lb			*10,870	*10,870	21,940	13,210	14,090	8,880	10,210	6,550	8,880	5,710	(27.2)
-1.5m -4.9ft	kg	*5,620	*5,620	*9,400	*9,400	9,860	5,910	6,310	3,960	4,600	2,950	4,370	2,800	7.80
	lb	*12,390	*12,390	*20,720	*20,720	21,740	13,030	13,910	8,730	10,140	6,500	9,630	6,170	(25.6)
-3.0m -9.8ft	kg			*13,630	11,410	*9,640	5,970	6,350	4,000			5,170	3,310	6.96
	lb			*30,050	25,150	*21,250	13,160	14,000	8,820			11,400	7,300	(22.8)
-4.5m -14.8ft	kg			*10,720	*10,720	*7,730	6,180					*5,820	4,590	5.60
	lb			*23,630	*23,630	*17,040	13,620					*12,830	10,120	(18.4)

5.70 m (18' 8") Mono boom, 3.5 m (11' 6") arm and 600mm(38") Triple grouser shoe.

Load point height m (ft)	Lift-point radius								At max. reach					
	1.5 m (4.9 ft)		3.0 m (9.8 ft)		4.5 m (14.8 ft)		6.0 m (19.7 ft)		7.5 m (24.6 ft)		Capacity		Reach	
													m (ft)	
7.5m 24.6ft	kg											*3,630	*3,630	6.89
	lb											*8,000	*8,000	(22.6)
6.0m 19.7ft	kg									*4,310	3,370	*3,420	3,050	7.91
	lb									*9,500	7,430	*7,540	6,720	(26.0)
4.5m 14.8ft	kg							*4,750	4,740	*4,490	3,300	*3,390	2,610	8.56
	lb							*10,470	10,450	*9,900	7,280	*7,470	5,750	(28.1)
3.0m 9.8ft	kg			*10,620	*10,620	*6,980	6,890	*5,590	4,470	4,860	3,170	*3,480	2,380	8.90
	lb			*23,410	*23,410	*15,390	15,190	*12,320	9,850	10,710	6,990	*7,670	5,250	(29.2)
1.5m 4.9ft	kg					*8,770	6,310	*6,490	4,190	4,700	3,030	3,570	2,290	8.98
	lb					*19,330	13,910	*14,310	9,240	10,360	6,680	7,870	5,050	(29.5)
0.0m 0.0ft	kg			*6,220	*6,220	9,910	5,930	6,350	3,980	4,570	2,910	3,630	2,310	8.80
	lb			*13,710	*13,710	21,850	13,070	14,000	8,770	10,080	6,420	8,000	5,090	(28.9)
-1.5m -4.9ft	kg	*5,440	*5,440	*9,200	*9,200	9,730	5,780	6,220	3,860	4,510	2,850	3,890	2,470	8.35
	lb	*11,990	*11,990	*20,280	*20,280	21,450	12,740	13,710	8,510	9,940	6,280	8,580	5,450	(27.4)
-3.0m -9.8ft	kg	*9,040	*9,040	*13,720	11,060	9,740	5,790	6,210	3,850	4,530	2,870	4,480	2,840	7.57
	lb	*19,930	*19,930	*30,250	24,380	21,470	12,760	13,690	8,490	9,990	6,330	9,880	6,260	(24.8)
-4.5m -14.8ft	kg			*12,180	11,370	*8,570	5,940	*6,170	3,980			*5,640	3,710	6.34
	lb			*26,850	25,070	*18,890	13,100	*13,600	8,770			*12,430	8,180	(20.8)

- Lifting capacity are based on ISO 10567.
- Lifting capacity of HX Series does not exceed 75% of tipping load with the machine on firm, level ground or 87% of full hydraulic capacity.
- The Lift-point is bucket pivot mounting pin on the arm (without bucket mass).
- (*) indicates load limited by hydraulic capacity.



HX220 L LIFTING CAPACITY

Rating over-front Rating over-side or 360 degree

HX220L

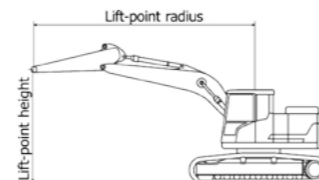
5.70 m (18' 8") Mono boom, 2.00 m (6' 7") arm and 600mm(38") Triple grouser shoe.

Load point height m (ft)	Lift-point radius								At max. reach		
	3.0m (9.8ft)		4.5m (14.8ft)		6.0m (19.7ft)		7.5m (24.6ft)		Capacity	Reach	
7.5m 24.6ft	kg								*6,130	*6,130	5.05
	lb								*13,510	*13,510	(16.6)
6.0m 19.7ft	kg		*6,170	*6,170	*5,780	5,220			*5,810	4,700	6.39
	lb		*13,600	*13,600	*12,740	11,510			*12,810	10,360	(21.0)
4.5m 14.8ft	kg		*7,370	*7,370	*6,130	5,090			*5,780	3,860	7.17
	lb		*16,250	*16,250	*13,510	11,220			*12,740	8,510	(23.5)
3.0m 9.8ft	kg				*6,820	4,880	5,430	3,530	5,340	3,470	7.58
	lb				*15,040	10,760	11,970	7,780	11,770	7,650	(24.9)
1.5m 4.9ft	kg				7,420	4,690	5,340	3,450	5,170	3,340	7.67
	lb				16,360	10,340	11,770	7,610	11,400	7,360	(25.2)
0.0m 0.0ft	kg		*10,600	6,820	7,290	4,580			5,340	3,440	7.46
	lb		*23,370	15,040	16,070	10,100			11,770	7,580	(24.5)
-1.5m -4.9ft	kg		*10,130	6,840	7,280	4,570			5,960	3,810	6.92
	lb		*22,330	15,080	16,050	10,080			13,140	8,400	(22.7)
-3.0m -9.8ft	kg	*11,600	*11,600	*8,810	6,970				*6,360	4,750	5.95
	lb	*25,570	*25,570	*19,420	15,370				*14,020	10,470	(19.5)

5.70 m (18' 8") Mono boom, 2.40 m (7' 10") arm and 600 mm (38") triple grouser shoe.

Load point height m (ft)	Lift-point radius								At max. reach		
	3.0m (9.8ft)		4.5m (14.8ft)		6.0m (19.7ft)		7.5m (24.6ft)		Capacity	Reach	
7.5m 24.6ft	kg								*5,580	*5,580	5.62
	lb								*12,300	*12,300	(18.4)
6.0m 19.7ft	kg				*5,340	5,270			*5,390	4,220	6.85
	lb				*11,770	11,620			*11,880	9,300	(22.5)
4.5m 14.8ft	kg		*6,820	*6,820	*5,770	5,120	*5,380	3,600	*5,320	3,530	7.58
	lb		*15,040	*15,040	*12,720	11,290	*11,860	7,940	*11,730	7,780	(24.9)
3.0m 9.8ft	kg		*8,560	7,400	*6,520	4,890	5,420	3,520	4,930	3,200	7.97
	lb		*18,870	16,310	*14,370	10,780	11,950	7,760	10,870	7,050	(26.1)
1.5m 4.9ft	kg		*9,990	6,960	*7,250	4,670	5,320	3,420	4,790	3,090	8.06
	lb		*22,020	15,340	*15,980	10,300	11,730	7,540	10,560	6,810	(26.4)
0.0m 0.0ft	kg		*10,530	6,770	7,260	4,540	5,250	3,360	4,920	3,160	7.85
	lb		*23,210	14,930	16,010	10,010	11,570	7,410	10,850	6,970	(25.8)
-1.5m -4.9ft	kg	*9,270	*9,270	*10,280	6,750	7,210	4,500		5,410	3,460	7.34
	lb	*20,440	*20,440	*22,660	14,880	15,900	9,920		11,930	7,630	(24.1)
-3.0m -9.8ft	kg	*12,590	*12,590	*9,230	6,850	*6,790	4,580		*6,060	4,190	6.44
	lb	*27,760	*27,760	*20,350	15,100	*14,970	10,100		*13,360	9,240	(21.1)
-4.5m -14.8ft	kg		*6,620	*6,620							
	lb		*14,590	*14,590							

- Lifting capacity are based on ISO 10567.
- Lifting capacity of HX Series does not exceed 75% of tipping load with the machine on firm, level ground or 87% of full hydraulic capacity.
- The Lift-point is bucket pivot mounting pin on the arm (without bucket mass).
- (*) indicates load limited by hydraulic capacity.



HX220L

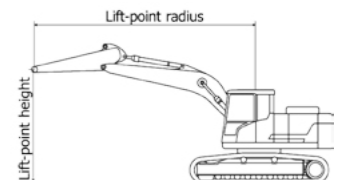
5.70 m (18' 8") Mono boom, 2.90 m (9' 6") arm and 600mm(38") Triple grouser shoe.

Load point height m (ft)	Lift-point radius										At max. reach			
	1.5m (4.9ft)		3.0m (9.8ft)		4.5m (14.8ft)		6.0m (19.7ft)		7.5m (24.6ft)		Capacity	Reach		
7.5m 24.6ft	kg										*4,920	*4,920	6.21	
	lb										*10,850	*10,850	(20.4)	
6.0m 19.7ft	kg										*4,830	*4,830	7.34	
	lb										*10,650	*10,650	(24.1)	
4.5m 14.8ft	kg					*6,130	*6,130	*5,330	5,170	*4,960	3,630	*3,960	3,230	8.03
	lb					*13,510	*13,510	*11,750	11,400	*10,930	8,000	*8,730	7,120	(26.3)
3.0m 9.8ft	kg					*7,880	7,530	*6,120	4,920	*5,300	3,520	*4,060	2,950	8.39
	lb					*17,370	16,600	*13,490	10,850	*11,680	7,760	*8,950	6,500	(27.5)
1.5m 4.9ft	kg					*9,500	7,010	*6,940	4,680	5,300	3,400	*4,320	2,840	8.48
	lb					*20,940	15,450	*15,300	10,320	11,680	7,500	*9,520	6,260	(27.8)
0.0m 0.0ft	kg			*4,930	*4,930	*10,340	6,740	7,230	4,510	5,210	3,310	4,520	2,890	8.29
	lb			*10,870	*10,870	*22,800	14,860	15,940	9,940	11,490	7,300	9,960	6,370	(27.2)
-1.5m -4.9ft	kg	*5,620	*5,620	*9,400	*9,400	*10,370	6,660	7,150	4,430	5,180	3,290	4,910	3,130	7.80
	lb	*12,390	*12,390	*20,720	*20,720	*22,860	14,680	15,760	9,770	11,420	7,250	10,820	6,900	(25.6)
-3.0m -9.8ft	kg			*13,630	13,110	*9,640	6,720	*7,140	4,470			*5,810	3,690	6.96
	lb			*30,050	28,900	*21,250	14,820	*15,740	9,850			*12,810	8,140	(22.8)
-4.5m -14.8ft	kg			*10,720	*10,720	*7,730	6,940					*5,820	5,120	5.60
	lb			*23,630	*23,630	*17,040	15,300					*12,830	11,290	(18.4)

5.70 m (18' 8") Mono boom, 3.50 m (11' 6") arm and 600mm(38") Triple grouser shoe.

Load point height m (ft)	Lift-point radius										At max. reach			
	1.5 m (4.9 ft)		3.0 m (9.8 ft)		4.5 m (14.8 ft)		6.0 m (19.7 ft)		7.5 m (24.6 ft)		Capacity	Reach		
7.5m 24.6ft	kg										*3,630	*3,630	6.89	
	lb										*8,000	*8,000	(22.6)	
6.0m 19.7ft	kg									*4,310	3,720	*3,420	3,370	7.91
	lb									*9,500	8,200	*7,540	7,430	(26.0)
4.5m 14.8ft	kg							*4,750	*4,750	*4,490	3,650	*3,390	2,900	8.56
	lb							*10,470	*10,470	*9,900	8,050	*7,470	6,390	(28.1)
3.0m 9.8ft	kg			*10,620	*10,620	*6,980	*6,980	*5,590	4,960	*4,890	3,520	*3,480	2,660	8.90
	lb			*23,410	*23,410	*15,390	*15,390	*12,320	10,930	*10,780	7,760	*7,670	5,860	(29.2)
1.5m 4.9ft	kg					*8,770	7,070	*6,490	4,670	5,280	3,370	*3,710	2,560	8.98
	lb					*19,330	15,590	*14,310	10,300	11,640	7,430	*8,180	5,640	(29.5)
0.0m 0.0ft	kg			*6,220	*6,220	*9,930	6,680	*7,180	4,450	5,150	3,250	4,080	2,590	8.80
	lb			*13,710	*13,710	*21,890	14,730	15,830	9,810	11,350	7,170	8,990	5,710	(28.9)
-1.5m -4.9ft	kg	*5,440	*5,440	*9,200	*9,200	*10,290	6,530	7,050	4,330	5,080	3,190	4,370	2,760	8.35
	lb	*11,990	*11,990	*20,280	*20,280	*22,690	14,400	15,540	9,550	11,200	7,030	9,630	6,080	(27.4)
-3.0m -9.8ft	kg	*9,040	*9,040	*13,720	12,750	*9,900	6,540	7,040	4,330	5,110	3,210	5,050	3,180	7.57
	lb	*19,930	*19,930	*30,250	28,110	*21,830	14,420	15,520	9,550	11,270	7,080	11,130	7,010	(24.8)
-4.5m -14.8ft	kg			*12,180	*12,180	*8,570	6,700	*6,170	4,450			*5,640	4,150	6.34
	lb			*26,850	*26,850	*18,890	14,770	*13,600	9,810			*12,430	9,150	(20.8)

- Lifting capacity are based on ISO 10567.
- Lifting capacity of HX Series does not exceed 75% of tipping load with the machine on firm, level ground or 87% of full hydraulic capacity.
- The Lift-point is bucket pivot mounting pin on the arm (without bucket mass).
- (*) indicates load limited by hydraulic capacity.



HX220 L LIFTING CAPACITY

Rating over-front Rating over-side or 360 degree

HX220L HW

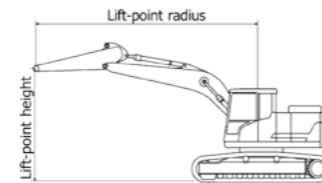
5.70 m (18' 8") Mono boom, 2.90 m (9' 6") arm and 600mm(38") Triple grouser shoe.

Load point height m (ft)	Lift-point radius										At max. reach		
	1.5m (4.9ft)		3.0m (9.8ft)		4.5m (14.8ft)		6.0m (19.7ft)		7.5m (24.6ft)		Capacity	Reach	
											kg (lb)	m (ft)	
7.5m 24.6ft	kg lb										*4,850 *10,690	*4,850 *10,690	6.40 (21.0)
6.0m 19.7ft	kg lb										*4,870 *10,740	*4,870 *10,740	7.46 (24.5)
4.5m 14.8ft	kg lb			*6,350 *14,000	*6,350 *14,000	*5,430 *11,970	*5,430 *11,970	*5,000 *11,020	3,850 8,490	*3,970 *8,750	3,390 7,470	8.10 (26.6)	
3.0m 9.8ft	kg lb			*8,130 *17,920	7,890 17,390	*6,240 *13,760	5,190 11,440	*5,360 *11,820	3,730 8,220	*4,090 *9,020	3,120 6,880	8.42 (27.6)	
1.5m 4.9ft	kg lb			*9,670 *21,320	7,400 16,310	*7,040 *15,520	4,950 10,910	5,620 12,390	3,620 7,980	*4,370 *9,630	3,040 6,700	8.47 (27.8)	
0.0m 0.0ft	kg lb		*5,500 *12,130	*5,500 *12,130	*10,390 *22,910	7,160 15,790	*7,560 *16,670	4,790 10,560	5,530 12,190	3,530 7,780	4,850 10,690	3,120 6,880	8.24 (27.0)
-1.5m -4.9ft	kg lb	*6,270 *13,820	*6,270 *13,820	*10,130 *22,330	*10,130 *22,330	*10,320 *22,750	7,100 15,650	7,600 16,760	4,730 10,430	5,510 12,150	3,520 7,760	3,400 7,500	7.71 (25.3)
-3.0m -9.8ft	kg lb			*13,320 *29,370	*13,320 *29,370	*9,460 *20,860	7,190 15,850	*6,990 *15,410	4,780 10,540		*5,830 *12,850	4,070 8,970	6.81 (22.3)
-4.5m -14.8ft	kg lb					*7,290 *16,070	*7,290 *16,070				*5,780 *12,740	*5,780 *12,740	5.34 (17.5)

5.70 m (18' 8") Mono boom, 3.50 m (11' 6") arm and 600mm(38") Triple grouser shoe.

Load point height m (ft)	Lift-point radius										At max. reach		
	1.5m (4.9ft)		3.0m (9.8ft)		4.5m (14.8ft)		6.0m (19.7ft)		7.5m (24.6ft)		Capacity	Reach	
											kg (lb)	m (ft)	
7.5m 24.6ft	kg lb										*3,580 *7,890	*3,580 *7,890	7.06 (23.2)
6.0m 19.7ft	kg lb							*4,270 *9,410	*4,270 *9,410	*4,310 *9,500	3,940 8,690	*3,410 *7,520	8.03 (26.3)
4.5m 14.8ft	kg lb					*4,860 *10,710	*4,860 *10,710	*4,540 *10,010	3,860 8,510	*3,400 *7,500	3,050 6,720	8.62 (28.3)	
3.0m 9.8ft	kg lb				*7,250 *15,980	*7,250 *15,980	*5,720 *12,610	5,220 11,510	*4,960 *10,930	3,720 8,200	*3,510 *7,740	2,820 6,220	8.93 (29.3)
1.5m 4.9ft	kg lb				*8,980 *19,800	7,440 16,400	*6,600 *14,550	4,940 10,890	*5,430 *11,970	3,580 7,890	*3,750 *8,270	2,740 6,040	8.97 (29.4)
0.0m 0.0ft	kg lb		*6,550 *14,440	*6,550 *14,440	*10,030 *22,110	7,090 15,630	*7,260 *16,010	4,730 10,430	5,470 12,060	3,470 7,650	*4,170 *9,190	2,790 6,150	8.75 (28.7)
-1.5m -4.9ft	kg lb	*5,920 *13,050	*5,920 *13,050	*9,730 *21,450	*9,730 *21,450	*10,280 *22,660	6,960 15,340	7,490 16,510	4,630 10,210	5,410 11,930	3,410 7,520	4,730 10,430	8.26 (27.1)
-3.0m -9.8ft	kg lb	*9,610 *21,190	*9,610 *21,190	*14,260 *31,440	13,610 30,000	*9,780 *21,560	6,990 15,410	*7,230 *15,940	4,640 10,230		*5,470 *12,060	3,500 7,720	7.43 (24.4)
-4.5m -14.8ft	kg lb			*11,730 *25,860	*11,730 *25,860	*8,270 *18,230	7,170 15,810	*5,850 *12,900	4,790 10,560		*5,660 *12,480	4,670 10,300	6.12 (20.1)

- Lifting capacity are based on ISO 10567.
- Lifting capacity of the ROBEX series does not exceed 75% of tipping load with the machine on firm, level ground or 87% of full hydraulic capacity.
- The load point is a hook located on the back of the bucket.
- (*) indicates load limited by hydraulic capacity.



HX220 L STANDARD / OPTION

ENGINE	STD	OPT
CUMMINS / QSB 7	●	
HYDRAULIC SYSTEM		
INTELLIGENT POWER CONTROL (IPC)		
3-power mode, 2-work mode, user mode	●	
Variable power control	●	
Pump flow control	●	
Attachment mode flow control		●
Engine auto idle	●	
Engine auto shutdown control		●
CAB & INTERIOR		
ISO STANDARD CABIN		
Rise-up type windshield wiper	●	
Radio / USB player	●	
12 volt power outlet (24V DC to 12V DC converter)	●	
All-weather steel cab with 360° visibility	●	
Safety glass - Tempered glass	●	
Safety glass - Tempered glass with front laminated glass		●
Sliding fold-in front window	●	
Sliding side window(LH)	●	
Lockable door	●	
Hot & cool box	●	
Storage compartment & Ashtray	●	
Sun visor	●	
Door and cab locks, one key	●	
Cabin lights		●
Cabin front window rain guard		●
Transparent cabin roof-cover	●	
Cabin roof-steel cover		●
AUTOMATIC CLIMATE CONTROL		
Air conditioner & heater	●	
Defroster	●	
Starting Aid (air grid heater) for cold weather	●	
CENTRALIZED MONITORING		
8" LCD display - Normal type	●	
8" LCD display - Premium type		●
Engine speed or Trip meter / Accel.	●	
Engine coolant temperature gauge	●	
Max power	●	
Low speed / High speed	●	
Auto idle	●	
Overload warning alarm		●
Air cleaner clogging	●	
Indicators	●	
ECO gauges	●	
Fuel level gauge	●	
Hyd. oil temperature gauge	●	
Fuel warmer		●
Warnings	●	
Communication error	●	
Low battery	●	
Clock	●	
SEAT		
Mechanical suspension without heater		●
Mechanical suspension with heater	●	
Adjustable air suspension without heater		●
Adjustable air suspension with heater		●
CABIN FOPS (ISO 10262) LEVEL 2		
FOPS (Falling Object Protective Structure)-ISO 10262 Level 2	Front & Top guard	●
	Top guard	●
CABIN ROPS		
ROPS (Roll Over Protective Structures)-ISO 12117-2		●

* Standard and optional equipment may vary. Contact your Hyundai dealer for more information. The machine may vary according to International standards.
 * The photos may include attachments and optional equipment that are not available in your area.
 * Materials and specifications are subject to change without advance notice.
 * All imperial measurements rounded off to the nearest pound or inch.

SAFETY	STD	OPT
Battery master switch	●	
Rearview camera		●
AAVM (Advanced Around View Monitoring)		●
Front working lights	●	
Travel alarm	●	
Rear work lamp		●
Beacon lamp		●
Automatic swing brake	●	
Boom holding system	●	
Arm holding system	●	
Safety lock valve for boom cylinder with overload warning device		●
Safety lock valve for arm cylinder		●
Swing lock system		●
Outside rearview mirror	●	
ATTACHMENT		
BOOMS		
5.70m, 18' 8" Mono	●	
8.2m, 26' 11" Long reach		●
ARMS		
2.00m, 6' 7"		●
2.40m, 7' 10"		●
2.90m, 9' 6"	●	
2.90m, 9' 6" Heavy duty		●
3.50m, 11' 6"		●
6.20m, 20' 4" Long reach		●
OTHERS		
Removable clean-out dust net for cooler	●	
Removable reservoir tank	●	
Fuel pre-filter	●	
Fuel warmer		●
Fuel warmer- Dual		●
Self-diagnostics system	●	
Hi MATE (Remote Management System)		●
Batteries (2 x 12V x 100 AH)	●	
Fuel filler pump (50 L/min)		●
Single-acting piping kit (breaker, etc.)		●
Double-acting piping kit (clamshell, etc.)		●
Rotating piping kit		●
Quick coupler piping		●
Quick coupler		●
Accumulator for lowering work equipment	●	
Pattern change valve (2 patterns)		●
Fine Swing Control System		●
General type guardrail	●	
Tool kit		●
Rain cap	●	
Pre cleaner		●
Handsfree mobile phone system with USB	●	
Electric horn	●	
Pilot-operated slidable joystick	●	
COUNTERWEIGHT		
3.8 ton CWT	●	
5.3 ton CWT (LR)		●
UNDERCARRIAGE		
Lower frame under cover (Additional)		●
Lower frame under cover (Normal)	●	
TRACK SHOES		
Triple grousers shoes (600mm, 24")	●	
Triple grousers shoe (700mm, 28")		●
Triple grousers shoe (800mm, 32")		●
Triple grousers shoe (900mm, 36")		●
Double grousers shoe (700mm, 28")		●
Track rail guard	●	
Full track rail guard		●

