

HX210

The Next Generation of Excavators

23 Ton Medium Excavator
141 kW (189 HP) / 1,700 rpm



HYUNDAI



ABOVE AND BEYOND

THE NEXT GENERATION OF EXCAVATORS

Hyundai vision of delivering a refined yet dignified design, offering customers an experience of understated elegance and sophistication.

Productivity

Enhanced Operating Performance and Durability
Top-Level Lifting Power and Stability
2D Machine Guidance Option
New Designed Joystick

Safety

SAVM (Smart Around View Monitoring)
– AI-powered real-time detection and alert system for surrounding individuals.
Lift Assist Pro
– Real-time tip-over alerts and equipment status monitoring
Operator Guide and Work Efficiency Enhancement

Comfort

User-Friendly Interface
Cabin Design Maximizing Operator Convenience
Providing Top-Level Operational Convenience
Fuel Efficiency Improvement and Efficiency Maximization

Smart & Serviceability

Digital Platform 'HYUNDAI CONNECT'
Digital Key Function (Hyundai Connect App Integration)
Equipment Operation History Inquiry and Analysis
– Optimized Fleet & Rental Equipment Management

PRODUCTIVITY

Powerful sophistication that takes you further ahead

The HX210L's high-performance engine with a robust design delivers outstanding fuel efficiency and high productivity. It provides a comfortable work environment for the operator to work more precisely and efficiently.



VBO (Virtual bleed off) System

The new machines have a VBO system that improves fuel consumption by controlling flow rate via electrically controlled main pump and software to simulate load sensitivity.



Equipped with HYUNDAI engine

The HX210L have a new high-performance Stage V Hyundai engine, with enhanced durability and improved ease of maintenance.



Enhanced digging force

A large-capacity bucket with improved cutting edge has greatly increased productivity compared to the standard bucket size.

Control Priority Setting

Adjustable boom and swing priority via the cluster, allowing operators to optimize performance based on working conditions and preferences.

PRODUCTIVITY

16% ^{^^} up

FUEL EFFICIENCY

20% ^{^^} up

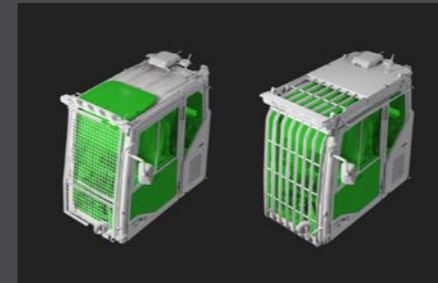


SAFETY

Enhanced safety with a strong exterior

The true value of the HX210L comes from its durability and high productivity.

The strong upper and lower structures can withstand external shocks and high-load operations, and the work performance verified by rigorous performance tests provides high reliability even in harsh environments.



Cabin guard **OPTION**

A guard is installed to protect the operator from falling objects from above during work in rough terrain such as mines.



New designed counterweight

A newly designed counterweight enhances the machine's powerful appearance and gives customers a sense of pride.



Built-in rear and side view cameras with integrated lamps

Robust, built-in rear and side view cameras with integrated lamps are designed for durability and improved visibility, providing clear vision through a wide 12.8-inch cluster, even in low-light environments.



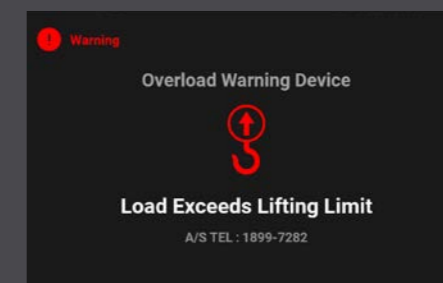
Side Access

New model is designed to make operator to get maintenance easy by giving side access structure in order to climb up the machine.



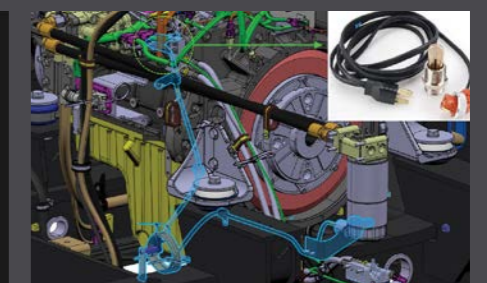
Enhanced Boom and Arm durability

Both the boom and arm have been redesigned to be more durable by increasing the box size of the boom and changing the structure of the arm.



Overload warning Device **OPTION**

When an overload is detected, a first warning is displayed. Following that, a colored notification fully informs the operator of the risk of overturning.



Improved start-up in ultra-low temperature environments **OPTION**

The engine's internal temperature is increased by heating the coolant with electric heaters in the engine through an external power source, which helps start the engine in extremely cold environments. It is compatible with both 110V and 220V, depending on the region's operating environment.

COMFORT

Interior that completes a comfortable journey

The interior design reflects the strength and dignity of Hyundai Construction Equipment, and incorporates productivity and convenience.

The advanced infotainment system with advanced convenience technology completes an efficient work journey and provides a comfortable working environment.



1. 12.8-inch large screen

The large 12.8-inch FHD screen provides excellent legibility compared to the 8-inch screen of the previous model. It can also be divided into sections, allowing the operator to check multiple conditions at once.

2. Comfortable seat and arm rest

All-new ergonomic seat design for enhanced comfort and reduced fatigue, paired with wide, ergonomically designed armrests to ensure a more relaxed and comfortable operating experience.

3. New Joystick

Ergonomically designed joystick for enhanced comfort and precise control.

4. Premium-quality colors

With more refined colors than our existing products, it enhances the dignity of on-site professionals.

5. Modern audio system

DAB functionality enables Bluetooth and digital radio broadcast reception. It supports up to Multi-channel of speaker output.

6. Separate driving straight-ahead pedal

When driving long distances, the equipment can be driven straight with a separate straight-ahead pedal without a separate switch. When not in use, the pedal can be used as a footrest by locking the function.

7. Tilting console and newly designed safety bar

The tilting console allows for easy and effortless entry and exit, complemented by a newly designed safety bar that provides both comfort and enhanced safety during operation.

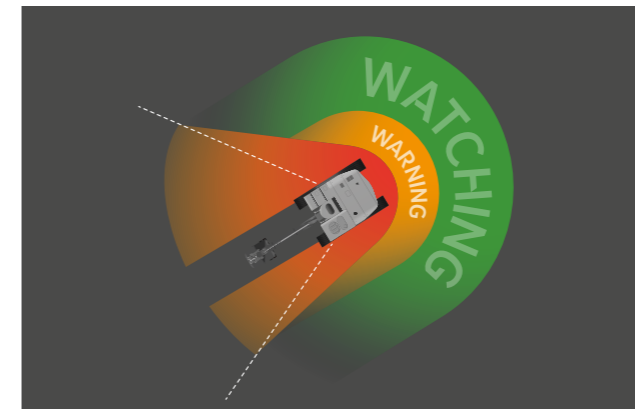


SMART

Technology that makes safety perfect

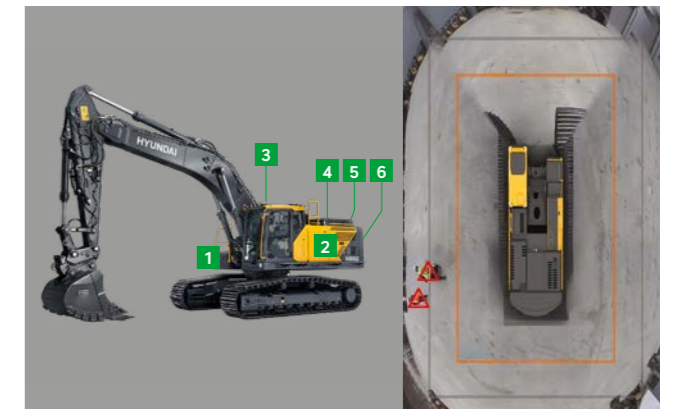
With cutting-edge technology and design optimized for hazardous work environments, safety of operators is guaranteed.

By allowing operators to focus on their work without worrying about safety issues, it will become a reliable partner on the grand journey.



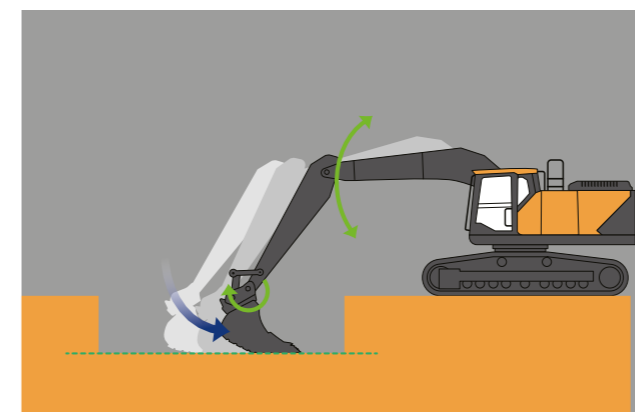
ADS (Advanced Detection System) OPTION

This provides a 330-degree detection angle to the left and right side of the machine covering 6-meters. If an obstacle is detected, visual and audible warnings are activated.



SAVM (Smart Around View Monitoring) OPTION

SAVM detects people around the equipment in real time using AI and displays warning signs on the monitor. Six cameras allow you to view a video on a big 12.8-inch screen.



2D Machine Guidance

A work-assist system that calculates bucket tip depth and inclination in real time using sensors mounted on the HX210's front and body, delivering intuitive guidance with all key information accessible via the HX210's cluster.



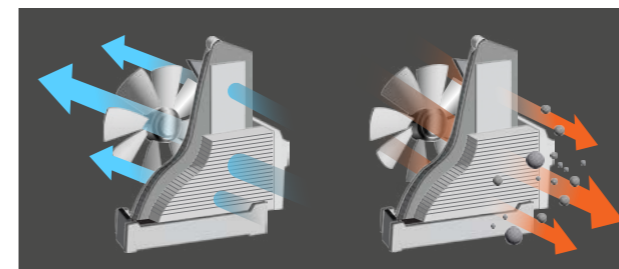
White noise buzzer

The white noise alert tone using wideband frequency quickly notifies the location of the equipment, and the sound wave quickly dissipates compared to a general buzzer, eliminating noise complaints from the surrounding area.

SERVICEABILITY

Convenient maintenance with smart technology

We are creating smart construction sites with digital technology based on IoT, ICT, and AI. You can control and monitor the site using a computer or smartphone, allowing for more efficient work time management.



Easy maintenance and cleaning with reversible fan

The reversible fan function allows for easy maintenance and cleaning of the fan, which increases maintainability and helps to increase the equipment's durability.



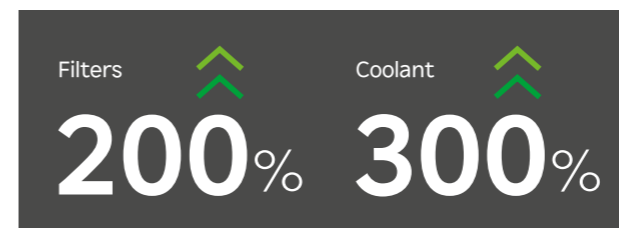
Simplified after-treatment device

The simplified integrated after-treatment device minimizes failure factors and applies an automatic after-treatment device regeneration system that does not require frequent forced regeneration.



Increased convenience of replacing filters

The filters in the pump room have been rearranged and the opening area of the filter cover has been expanded to improve the ease of maintenance.

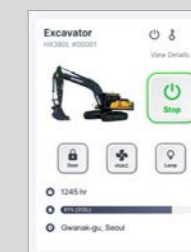


Long-life filters and coolant

Replacement intervals for engine oil, engine oil filters, and fuel filters have been extended from 500 to 1,000 hours (when CK-4 engine oil is used) and coolant replacement intervals have been extended from 2,000 to 6,000 hours.

HYUNDAI CONNECT

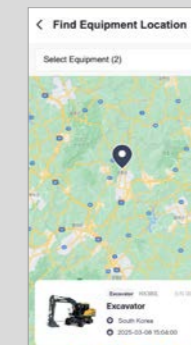
HYUNDAI CONNECT is the latest technology that allows you to check and manage the operating status of equipment, the presence of any abnormalities, and consumable information that requires periodic management, using a computer or smartphone via the mobile phone network. You can check the status of equipment in operation on site, even in the office or on the move, without any time or space constraints, and manage the equipment along with service selection.



Digital Key & Remote Start/Climate Control

With the Hyundai Connect app, you can start the equipment and remotely control various functions (climate control, horn, lamps, door lock/unlock) without a physical key. You can register multiple drivers using

a smartphone and preheat the equipment or adjust the cabin for a comfortable environment before boarding.



Location tracking and theft prevention function

You can check the location of your equipment through the Hyundai Connect web or mobile app and track its route if it is in motion. Additionally, you can set up alerts to prevent theft or misuse if the equipment moves outside a predefined area.



Maintenance notifications

If there is a risk of failure after notification and diagnosis of the consumable replacement cycle, the system provides tips on how to deal with the type of failure.



Fleet Monitoring Dashboard & Reports

Through the web and app, you can monitor equipment operation details such as working hours and idle time. You can also configure a dashboard to display key data, including fuel consumption and carbon emissions, or generate detailed equipment reports as needed.

SPECIFICATIONS

ENGINE	
Maker / Model	HYUNDAI / DX05
Type	4-cycle, turbocharged, charge air cooled, controlled by ECU
Gross Power (SAE J1995)	189HP(141 kW) at 1,700 rpm
Net Power	186HP(139 kW) at 1,700 rpm
Max. Torque	830 N·m (612 lb·ft) at 1,400 rpm

HYDRAULIC SYSTEM	
MAIN PUMP	
Type	Variable displacement axial piston pumps
Max. Oil Flow	2x212.5 l/min (2x56.14 us gpm)
Rated Speed	1,700 rpm
Cross-sensing and fuel saving pump system.	

HYDRAULIC MOTORS	
Travel	Variable displacement axial piston motor
Swing	Axial piston motor

RELIEF VALVE SETTING	
Maximum Pressure	350 kgf/cm ² (4,980 psi)
Maximum Pressure(Power Boost)	380 kgf/cm ² (5,405 psi)

HYDRAULIC CYLINDERS	
No. of Cylinder Bore X Stroke	Boom : Ø125x1,263 mm
	Arm : Ø140x1,443 mm
	Bucket : Ø120x 1,060 mm

DRIVES & BRAKES	
Drive Method	Variable displacement axial piston motor
Braking System	Automatic, spring applied hydraulic released
Max. Drawbar Pull	23,374 kgf/cm ² (51,533 lbf)
Max. Travel Speed (High / Low)	5.2 km/hr(3.23 mph) / 3.0 km/hr(1.86 mph)
Gradeability	35°(70%)
Parking Brake	Multi wet disc

CONTROL	
Pilot pressure operated joysticks and pedals with detachable lever provide almost effortless and fatigueless operation.	
Pilot Control	Two joysticks with one safety lever (LH) : Swing and arm (RH) : Boom and bucket (ISO)
Traveling and Steering	Two levers with pedals
Engine Throttle	Electric, dial type

SWING SYSTEM	
Swing Motor	Hydraulic Piston motor
Swing Reduction	2 Stage Reduction gear
Swing Bearing Lubrication	Ball bearing, Internal gear

COOLANT & LUBRICANT CAPACITY		
	liter	US gal
Fuel Tank	397	105
Engine Coolant	30.6	8.1
Engine Oil	26	6.9
Hydraulic Tank	393	103.8
Def/Adblue®	57.2	15.1

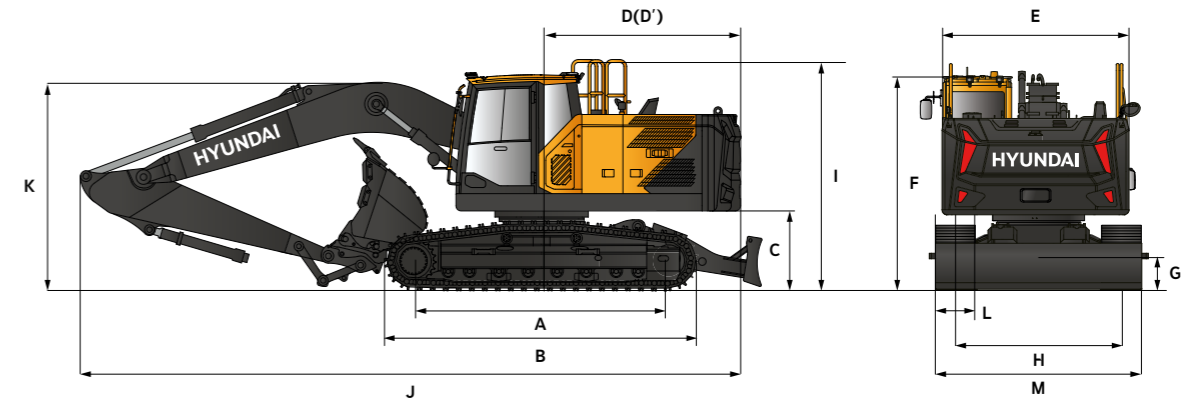
UNDERCARRIAGE	
The X-leg type center frame is integrally welded with reinforced box-section track frames. The undercarriage includes lubricated rollers, idlers, track adjusters with shock absorbing springs and sprockets, and a track chain with double or triple grouser shoes.	
Center Frame	X - Leg Type
Track Frame	Pentagonal Box Type
No. of Shoes on Each Side	49 EA
No. of Carrier Roller on Each Side	2 EA
No. of Track Roller on Each Side	8 EA

OPERATING WEIGHT (APPROXIMATE)	
Operating weight, including 5,700 mm (18' 8") boom, 2,900 mm (9' 6") arm, SAE heaped 1.05m ³ (1.37 yd ³) bucket, 4,900 kg (10,800 lb) counterweight, 600 mm (32") track shoe lubricant, coolant, full fuel tank, full hydraulic tank, and all standard equipments.	

OPERATING WEIGHT			
Shoes	Width	Operating Weight	Ground Pressure
Type	mm(in)	kg (lb)	kgf/cm ² (psi)
Triple Grouser	600 (24")	23,760 (53,380)	0.51 (7.20)
	700 (28")	24,050 (53,020)	0.44 (6.25)
	800 (32")	24,340 (53,660)	0.39 (5.53)
	900 (36")	24,430 (53,860)	0.35 (4.94)

DIMENSIONS & WORKING RANGE

HX210L DIMENSIONS				
5.7 m (18' 8"), 3,100 + 2,800 (2 PCS), 8.5(27' 11") BOOM and 2,4 m (7' 10"), 2.9 m (9' 6"), 3.5m(11' 6"), 6.2 m (20' 4") ARM				

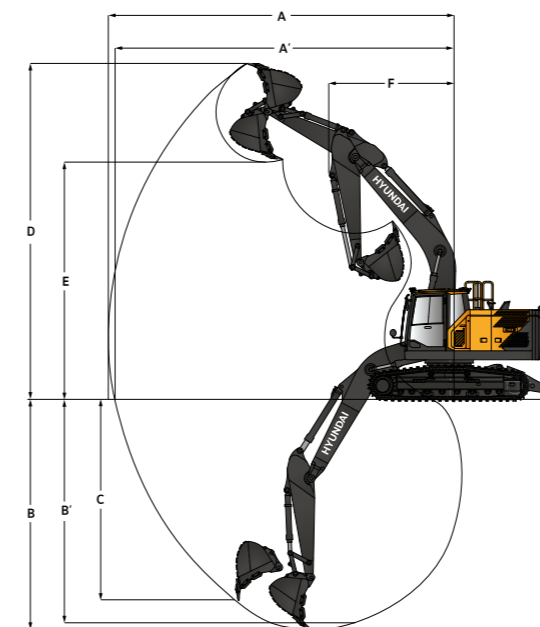


Dimension	Value
A Tumbler Distance	3,650 (12' 0")
B Overall Length of Crawler	4,445 (14' 7")
*C Ground Clearance of Counter Weight	1,096 (3' 7")
D Tail Swing Radius	2,906 (9' 6")
D' Rear-End Length	2,855 (9' 4")
E Overall Width of Upper Structure	2,710 (8' 11")
*F Overall Height of Cab	3,164 (10' 5")
G Min. Ground Clearance	450 (1' 6")
H Track gauge	2,390 (7' 10")
*I Overall Height of Guardrail	3,288 (10' 9")

Dimension	5,700 (18' 8")	3,100 + 2,800 (2 PCS) (19' 4")	8,500 (LR) (27' 11")
Boom Length	5,700 (18' 8")	3,100 + 2,800 (2 PCS) (19' 4")	8,500 (LR) (27' 11")
Arm Length	2,400 (7' 10")	2,900 (9' 6")	3,500 (11' 6")
J Overall Length	9,607 (31' 6")	9,580 (31' 5")	9,598 (31' 6")
*K Overall Height of Boom	3,146 (10' 6")	3,065 (9' 7")	3,387 (11' 1")
L Track Shoe Width	600 (24")	700 (28")	800 (32")
M Overall Width w/o Additional Foot Board	2,990 (9' 10")	3,090 (10' 2")	3,190 (10' 6")

* This figure includes the size of grousers.

HX210L WORKING RANGE



Dimension	5,700 (18' 8")	3,100+2,800 (10' 2" + 9' 2")	8,500 (27' 11")
Boom length	5,700 (18' 8")	3,100+2,800 (10' 2" + 9' 2")	8,500 (27' 11")
Arm length	2,400 (7' 10")	2,900 (9' 6")	3,500 (11' 6")
A Max. digging reach	9,475 (31' 1")	9,475 (31' 1")	10,400 (34' 1")
A' Max. digging reach on ground	9,295 (30' 6")	9,720 (31' 11")	10,235 (33' 7")
B Max. digging depth	6,115 (20' 1")	6,620 (21' 9")	7,220 (23' 8")
B' Max. digging depth (8' level)	5,905 (19' 4")	6,425 (21' 1")	7,045 (23' 1")
C Max. vertical wall digging depth	5,400 (17' 9")	5,790 (19' 0")	6,650 (21' 10")
D Max. digging height	9,425 (30' 11")	9,535 (31' 3")	9,735 (31' 11")
E Max. dumping height	6,665 (21' 10")	6,805 (22' 4")	6,950 (22' 10")
F Min. swing radius	3,575 (11' 9")	3,560 (11' 8")	3,615 (11' 10")

LIFTING CAPACITY

Rating over-side or 360 degree Rating over-side or 360 degree

HX210L

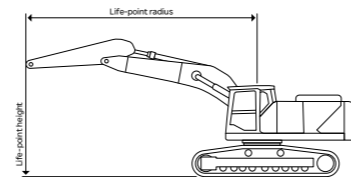
5.7 m (18' 8") boom, 2.9 m (9' 6") arm equipped with 4.2 ton counterweight and 600 mm (2' 0") triple grouser shoe, None Dozer

Lift-point height (m/ft)	Lift-point radius										At max. reach			
	1.5 m (5 ft)		3.0 m (10 ft)		4.5 m (15 ft)		6.0 m (20 ft)		7.5 m (25 ft)		Capacity	Reach		
												m (ft)		
7.5 m 25 ft	kg lb						5.36* 11.82*	5.36* 11.82*			4.67* 10.29*	4.67* 10.29*	6.20 (20.34)	
6.0 m 20 ft	kg lb						5.91* 13.03*	5.7 12.56			4.35* 9.59*	4.09 9.02	7.31 (23.98)	
4.5 m 15 ft	kg lb						6.49* 14.30*	5.52 12.17	5.93 13.08	3.88 8.55	4.29* 9.45*	3.49 7.68	7.99 (26.21)	
3.0 m 10 ft	kg lb				9.48* 20.90*	8.04 17.72	7.39* 16.28*	5.26 11.6	5.81 12.81	3.77 8.31	4.40* 9.70*	3.18 7.02	8.35 (27.38)	
1.5 m 5 ft	kg lb				11.26* 24.82*	7.5 16.54	7.94 17.51	5.01 11.03	5.68 12.51	3.65 8.04	4.69* 10.34*	3.08 6.78	8.42 (27.63)	
0.0 m 0.0 ft	kg lb			6.58* 14.52*	6.58* 14.52*	12.11* 26.70*	7.22 15.91	7.74 17.06	4.83 10.64	5.58 12.29	3.55 7.84	4.89 10.79	3.14 6.91	8.22 (26.98)
-1.5 m -5 ft	kg lb	7.19* 15.85*	7.19* 15.85*	11.41* 25.16*	11.41* 25.16*	12.00* 26.47*	7.14 15.74	7.66 16.88	4.76 10.48	5.55 12.24	3.53 7.79	5.33 11.75	3.4 7.5	7.73 (25.35)
-3.0 m -10 ft	kg lb	12.30* 27.12*	12.30* 27.12*	15.27* 33.67*	14.05 30.97	10.97* 24.19*	7.21 15.9	7.71 16.99	4.8 10.58			6.36 14.01	4.03 8.89	6.87 (22.54)
-4.5 m -15 ft	kg lb			11.66* 25.71*	11.66* 25.71*	8.52* 18.77*	7.46 16.44					6.52* 14.38*	5.65 12.47	5.49 (18.01)

5.7 m (18' 8") boom, 2.9 m (9' 6") arm equipped with 4.9 ton counterweight and 600 mm (2' 0") triple grouser shoe, None Dozer

Lift-point height (m/ft)	Lift-point radius										At max. reach			
	1.5 m (5 ft)		3.0 m (10 ft)		4.5 m (15 ft)		6.0 m (20 ft)		7.5 m (25 ft)		Capacity	Reach		
												m (ft)		
7.5 m 25 ft	kg lb						5.36* 11.82*	5.36* 11.82*			4.67* 10.29*	4.67* 10.29*	6.20 (20.34)	
6.0 m 20 ft	kg lb						5.91* 13.03*	5.91* 13.03*			4.35* 9.59*	4.35* 9.59*	7.31 (23.98)	
4.5 m 15 ft	kg lb						6.49* 14.30*	5.96 13.13	6.00* 13.23*	4.21 9.28	4.29* 9.45*	3.79 8.36	7.99 (26.21)	
3.0 m 10 ft	kg lb				9.48* 20.90*	8.67 19.12	7.39* 16.28*	5.7 12.56	6.22 13.72	4.1 9.04	4.40* 9.70*	3.47 7.66	8.35 (27.38)	
1.5 m 5 ft	kg lb				11.26* 24.82*	8.14 17.94	8.28* 18.26*	5.44 11.99	6.09 13.42	3.98 8.76	4.69* 10.34*	3.36 7.41	8.42 (27.63)	
0.0 m 0.0 ft	kg lb			6.58* 14.52*	6.58* 14.52*	12.11* 26.70*	7.85 17.31	8.3 18.29	5.26 11.6	5.99 13.2	3.88 8.56	5.22* 11.52*	3.43 7.56	8.22 (26.98)
-1.5 m -5 ft	kg lb	7.19* 15.85*	7.19* 15.85*	11.41* 25.16*	11.41* 25.16*	12.00* 26.47*	7.78 17.14	8.22 18.11	5.19 11.44	5.96 13.14	3.86 8.51	5.73 12.63	3.72 8.2	7.73 (25.35)
-3.0 m -10 ft	kg lb	12.30* 27.12*	12.30* 27.12*	15.27* 33.67*	15.24 33.59	10.97* 24.19*	7.85 17.31	8.16* 17.99*	5.23 11.54			6.70* 14.78*	4.4 9.7	6.87 (22.54)
-4.5 m -15 ft	kg lb			11.66* 25.71*	11.66* 25.71*	8.52* 18.77*	8.09 17.84					6.52* 14.38*	6.14 13.54	5.49 (18.01)

- At the arm end, without bucket (Unit: 1,000 kg)
- Capacities marked with an asterisk (*) are limited by hydraulic capacity.
- Lift capacities shown do not exceed 75% of the minimum tipping load or 87% of hydraulic capacity.
- The least stable position is over the side.
- Lift capacities apply only to the machine as originally manufactured and normally equipped by the manufacturer.
- Lift capacities are in compliance with ISO 10567.
- Text color indicates lifting capacity type.
- Machine in "Power Boost" mode for lifting capacities.



Rating over-side or 360 degree Rating over-side or 360 degree

HX210L

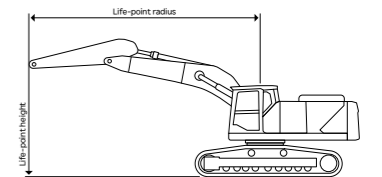
5.7 m (18' 8") boom, 2.9 m (9' 6") arm equipped with 4.9 ton counterweight and 600 mm (2' 0") triple grouser shoe, Up Dozer

Lift-point height (m/ft)	Lift-point radius										At max. reach			
	1.5 m (5 ft)		3.0 m (10 ft)		4.5 m (15 ft)		6.0 m (20 ft)		7.5 m (25 ft)		Capacity	Reach		
												m (ft)		
7.5 m 25 ft	kg lb						5.36* 11.82*	5.36* 11.82*			4.67* 10.29*	4.67* 10.29*	6.20 (20.34)	
6.0 m 20 ft	kg lb						5.91* 13.03*	5.91* 13.03*			4.35* 9.59*	4.35* 9.59*	7.31 (23.98)	
4.5 m 15 ft	kg lb						6.49* 14.30*	6.3 13.88	6.00* 13.23*	4.47 9.85	4.29* 9.45*	4.03 8.89	7.99 (26.21)	
3.0 m 10 ft	kg lb				9.48* 20.90*	9.17 20.22	7.39* 16.28*	6.04 13.31	6.37* 14.05*	4.36 9.6	4.40* 9.70*	3.7 8.16	8.35 (27.38)	
1.5 m 5 ft	kg lb				11.26* 24.82*	8.64 19.04	8.28* 18.26*	5.78 12.74	6.80* 14.98*	4.23 9.33	4.69* 10.34*	3.59 7.91	8.42 (27.63)	
0.0 m 0.0 ft	kg lb			6.58* 14.52*	6.58* 14.52*	12.11* 26.70*	8.35 18.41	8.86* 19.53*	5.6 12.35	6.73 14.83	4.14 9.13	5.22* 11.52*	3.66 8.07	8.22 (26.98)
-1.5 m -5 ft	kg lb	7.19* 15.85*	7.19* 15.85*	11.41* 25.16*	11.41* 25.16*	12.00* 26.47*	8.27 18.24	8.90* 19.63*	5.53 12.19	6.7 14.77	4.12 9.08	6.19* 13.64*	3.97 8.75	7.73 (25.35)
-3.0 m -10 ft	kg lb	12.30* 27.12*	12.30* 27.12*	15.27* 33.67*	15.27* 33.67*	10.97* 24.19*	8.35 18.41	8.16* 17.99*	5.57 12.29			6.70* 14.78*	4.69 10.33	6.87 (22.54)
-4.5 m -15 ft	kg lb			11.66* 25.71*	11.66* 25.71*	8.52* 18.77*	8.52* 18.77*					6.52* 14.38*	6.52 14.38	5.49 (18.01)

5.7 m (18' 8") boom, 2.9 m (9' 6") arm equipped with 4.9 ton counterweight and 600 mm (2' 0") triple grouser shoe, Down Dozer

Lift-point height (m/ft)	Lift-point radius										At max. reach			
	1.5 m (5 ft)		3.0 m (10 ft)		4.5 m (15 ft)		6.0 m (20 ft)		7.5 m (25 ft)		Capacity	Reach		
												m (ft)		
7.5 m 25 ft	kg lb						5.36* 11.82*	5.36* 11.82*			4.67* 10.29*	4.67* 10.29*	6.20 (20.34)	
6.0 m 20 ft	kg lb						5.91* 13.03*	5.91* 13.03*			4.35* 9.59*	4.35* 9.59*	7.31 (23.98)	
4.5 m 15 ft	kg lb						6.49* 14.30*	6.49* 14.30*	6.00* 13.23*	5.28 11.64	4.29* 9.45*	4.29* 9.45*	7.99 (26.21)	
3.0 m 10 ft	kg lb				9.48* 20.90*	9.48* 20.90*	7.39* 16.28*	7.19 15.86	6.37* 14.05*	5.17 11.39	4.40* 9.70*	4.39 9.68	8.35 (27.38)	
1.5 m 5 ft	kg lb				11.26* 24.82*	10.56 23.28	8.28* 18.26*	6.93 15.27	6.80* 14.98*	5.04 11.11	4.69* 10.34*	4.27 9.4	8.42 (27.63)	
0.0 m 0.0 ft	kg lb			6.58* 14.52*	6.58* 14.52*	12.11* 26.70*	10.25 22.6	8.86* 19.53*	6.74 14.86	7.05* 15.55*	4.94 10.9	5.22* 11.52*	4.36 9.62	8.22 (26.98)
-1.5 m -5 ft	kg lb	7.19* 15.85*	7.19* 15.85*	11.41* 25.16*	11.41* 25.16*	12.00* 26.47*	10.17 22.42	8.90* 19.63*	6.66 14.69	6.88* 15.16*	4.92 10.85	6.19* 13.64*	4.74 10.44	7.73 (25.35)
-3.0 m -10 ft	kg lb	12.30* 27.12*	12.30* 27.12*	15.27* 33.67*	15.27* 33.67*	10.97* 24.19*	10.25 22.6	8.16* 17.99*	6.71 14.79			6.70* 14.78*	5.6 12.35	6.87 (22.54)
-4.5 m -15 ft	kg lb			11.66* 25.71*	11.66* 25.71*	8.52* 18.77*	8.52* 18.77*					6.52* 14.38*	6.52 14.38	5.49 (18.01)

- At the arm end, without bucket (Unit: 1,000 kg)
- Capacities marked with an asterisk (*) are limited by hydraulic capacity.
- Lift capacities shown do not exceed 75% of the minimum tipping load or 87% of hydraulic capacity.
- The least stable position is over the side.
- Lift capacities apply only to the machine as originally manufactured and normally equipped by the manufacturer.
- Lift capacities are in compliance with ISO 10567.
- Text color indicates lifting capacity type.
- Machine in "Power Boost" mode for lifting capacities.



LIFTING CAPACITY

Rating over-side or 360 degree Rating over-side or 360 degree

HX210L

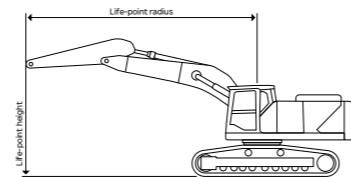
5.7 m (18' 8") boom, 2.9 m (9' 6") arm equipped with 4.9 ton counterweight and 800 mm (2' 7") triple grouser shoe, None Dozer

Lift-point height (m/ft)	Lift-point radius										At max. reach								
	1.5 m (5 ft)		3.0 m (10 ft)		4.5 m (15 ft)		6.0 m (20 ft)		7.5 m (25 ft)		Capacity	Reach							
7.5 m 25 ft	kg lb										5.36* 11.82*	5.36* 11.82*			4.67* 10.29*	4.67* 10.29*	6.20 (20.34)		
6.0 m 20 ft	kg lb										5.91* 13.03*	5.91* 13.03*			4.35* 9.59*	4.35* 9.59*	7.31 (23.98)		
4.5 m 15 ft	kg lb										6.49* 14.30*	6.07 13.39	6.00* 13.23*	4.3 9.48	4.29* 9.45*	3.88 8.54	7.99 (26.21)		
3.0 m 10 ft	kg lb										9.48* 20.90*	8.85 19.51	7.39* 16.28*	5.81 12.82	6.36 14.03	4.19 9.24	4.40* 9.70*	3.55 7.83	8.35 (27.38)
1.5 m 5 ft	kg lb										11.26* 24.82*	8.31 18.33	8.28* 18.26*	5.56 12.26	6.23 13.73	4.07 8.96	4.69* 10.34*	3.44 7.59	8.42 (27.63)
0.0 m 0.0 ft	kg lb										6.58* 14.52*	6.58* 14.52*	12.11* 26.70*	8.03 17.7	8.49 18.72	5.38 11.86	6.13 13.51	3.97 8.76	8.22 (26.98)
-1.5 m -5 ft	kg lb	7.19* 15.85*	7.19* 15.85*	11.41* 25.16*	11.41* 25.16*	12.00* 26.47*	7.95 17.53	8.41 18.54	5.31 11.7	6.1 13.45	3.95 8.71	5.86 12.93	3.81 8.39					7.73 (25.35)	
-3.0 m -10 ft	kg lb	12.30* 27.12*	12.30* 27.12*	15.27* 33.67*	15.27* 33.67*	10.97* 24.19*	8.03 17.69	8.16* 17.99*	5.35 11.8			6.70* 14.78*	4.5 9.92					6.87 (22.54)	
-4.5 m -15 ft	kg lb			11.66* 25.71*	11.66* 25.71*	8.52* 18.77*	8.27 18.23					6.52* 14.38*	6.27 13.83					5.49 (18.01)	

5.7 m (18' 8") boom, 2.9 m (9' 6") arm equipped with 4.9 ton counterweight and 800 mm (2' 7") triple grouser shoe, Up Dozer

Lift-point height (m/ft)	Lift-point radius										At max. reach								
	1.5 m (5 ft)		3.0 m (10 ft)		4.5 m (15 ft)		6.0 m (20 ft)		7.5 m (25 ft)		Capacity	Reach							
7.5 m 25 ft	kg lb										5.36* 11.82*	5.36* 11.82*			4.67* 10.29*	4.67* 10.29*	6.20 (20.34)		
6.0 m 20 ft	kg lb										5.91* 13.03*	5.91* 13.03*			4.35* 9.59*	4.35* 9.59*	7.31 (23.98)		
4.5 m 15 ft	kg lb										6.49* 14.30*	6.44 14.21	6.00* 13.23*	4.58 10.1	4.29* 9.45*	4.14 9.12	7.99 (26.21)		
3.0 m 10 ft	kg lb										9.48* 20.90*	9.39 20.7	7.39* 16.28*	6.18 13.63	6.37* 14.05*	4.47 9.85	4.40* 9.70*	3.8 8.38	8.35 (27.38)
1.5 m 5 ft	kg lb										11.26* 24.82*	8.86 19.52	8.28* 18.26*	5.93 13.07	6.80* 14.98*	4.35 9.58	4.69* 10.34*	3.69 8.13	8.42 (27.63)
0.0 m 0.0 ft	kg lb										6.58* 14.52*	6.58* 14.52*	12.11* 26.70*	8.57 18.89	8.86* 19.53*	5.75 12.68	6.92 15.25	4.26 9.38	8.22 (26.98)
-1.5 m -5 ft	kg lb	7.19* 15.85*	7.19* 15.85*	11.41* 25.16*	11.41* 25.16*	12.00* 26.47*	8.49 18.72	8.90* 19.63*	5.68 12.52	6.88* 15.16*	4.23 9.33	6.19* 13.64*	4.08 8.99					7.73 (25.35)	
-3.0 m -10 ft	kg lb	12.30* 27.12*	12.30* 27.12*	15.27* 33.67*	15.27* 33.67*	10.97* 24.19*	8.57 18.89	8.16* 17.99*	5.72 12.62			6.70* 14.78*	4.81 10.61					6.87 (22.54)	
-4.5 m -15 ft	kg lb			11.66* 25.71*	11.66* 25.71*	8.52* 18.77*	8.52* 18.77*					6.52* 14.38*	6.52* 14.38*					5.49 (18.01)	

- At the arm end, without bucket (Unit: 1,000 kg)
- Capacities marked with an asterisk (*) are limited by hydraulic capacity.
- Lift capacities shown do not exceed 75% of the minimum tipping load or 87% of hydraulic capacity.
- The least stable position is over the side.
- Lift capacities apply only to the machine as originally manufactured and normally equipped by the manufacturer.
- Lift capacities are in compliance with ISO 10567.
- Text color indicates lifting capacity type.
- Machine in "Power Boost" mode for lifting capacities.



Rating over-side or 360 degree Rating over-side or 360 degree

HX210L

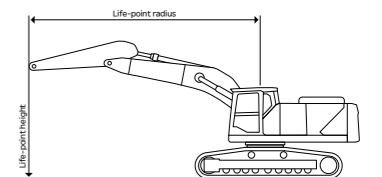
5.7 m (18' 8") boom, 2.9 m (9' 6") arm equipped with 4.9 ton counterweight and 800 mm (2' 7") triple grouser shoe, Down Dozer

Lift-point height (m/ft)	Lift-point radius										At max. reach								
	1.5 m (5 ft)		3.0 m (10 ft)		4.5 m (15 ft)		6.0 m (20 ft)		7.5 m (25 ft)		Capacity	Reach							
7.5 m 25 ft	kg lb										5.36* 11.82*	5.36* 11.82*			4.67* 10.29*	4.67* 10.29*	6.20 (20.34)		
6.0 m 20 ft	kg lb										5.91* 13.03*	5.91* 13.03*			4.35* 9.59*	4.35* 9.59*	7.31 (23.98)		
4.5 m 15 ft	kg lb										6.49* 14.30*	6.49* 14.30*	6.00* 13.23*	5.83 12.85	4.29* 9.45*	4.29* 9.45*	7.99 (26.21)		
3.0 m 10 ft	kg lb										9.48* 20.90*	9.48* 20.90*	7.39* 16.28*	7.39* 16.28*	6.37* 14.05*	5.71 12.59	4.40* 9.70*	4.40* 9.70*	8.35 (27.38)
1.5 m 5 ft	kg lb										11.26* 24.82*	11.26* 24.82*	8.28* 18.26*	7.7 16.97	6.80* 14.98*	5.58 12.31	4.69* 10.34*	4.69* 10.34*	8.42 (27.63)
0.0 m 0.0 ft	kg lb										6.58* 14.52*	6.58* 14.52*	12.11* 26.70*	11.54 25.44	8.86* 19.53*	7.51 16.55	7.05* 15.55*	5.49 12.09	8.22 (26.98)
-1.5 m -5 ft	kg lb	7.19* 15.85*	7.19* 15.85*	11.41* 25.16*	11.41* 25.16*	12.00* 26.47*	7.95 17.53	8.41 18.54	5.31 11.7	6.1 13.45	3.95 8.71	5.86 12.93	3.81 8.39					7.73 (25.35)	
-3.0 m -10 ft	kg lb	12.30* 27.12*	12.30* 27.12*	15.27* 33.67*	15.27* 33.67*	10.97* 24.19*	8.03 17.69	8.16* 17.99*	5.35 11.8			6.70* 14.78*	4.5 9.92					6.87 (22.54)	
-4.5 m -15 ft	kg lb			11.66* 25.71*	11.66* 25.71*	8.52* 18.77*	8.27 18.23					6.52* 14.38*	6.27 13.83					5.49 (18.01)	

5.7 m (18' 8") boom, 2.4 m (7' 10") arm equipped with 4.9 ton counterweight and 600 mm (2' 0") triple grouser shoe, None Dozer

Lift-point height (m/ft)	Lift-point radius										At max. reach								
	1.5 m (5 ft)		3.0 m (10 ft)		4.5 m (15 ft)		6.0 m (20 ft)		7.5 m (25 ft)		Capacity	Reach							
7.5 m 25 ft	kg lb										6.44* 14.20*	6.44* 14.20*			5.62 (18.44)				
6.0 m 20 ft	kg lb										5.90* 13.00*	4.93 10.87			6.82 (22.38)				
4.5 m 15 ft	kg lb										6.52* 14.38*	6.08 13.41			7.55 (24.76)				
3.0 m 10 ft	kg lb										8.32* 18.35*	8.32* 18.35*	7.02* 15.48*	5.93 13.07	6.14* 13.54*	4.2 9.27	5.76* 12.71*	4.16 9.17	7.92 (25.99)
1.5 m 5 ft	kg lb										11.83* 26.08*	8.13 17.93	8.52 18.79	5.47 12.07	6.13 13.52	4.03 8.88	5.58 12.3	3.68 8.11	8.00 (26.25)
0.0 m 0.0 ft	kg lb										12.32* 27.17*	7.94 17.5	8.37 18.44	5.33 11.76	6.06 13.37	3.96 8.74	5.75 12.68	3.77 8.32	7.79 (25.56)
-1.5 m -5 ft	kg lb										11.27* 24.84*	11.27* 24.84*	11.88* 26.20*	7.92 17.46	8.33 18.36	5.3 11.68			7.27 (23.84)
-3.0 m -10 ft	kg lb										14.05* 30.98*	14.05* 30.98*	10.48* 23.10*	8.04 17.71	7.69* 16.96*	5.39 11.88			6.35 (20.84)
-4.5 m -15 ft	kg lb										7.11* 15.67*	7.11* 15.67*							4.82 (15.82)

- At the arm end, without bucket (Unit: 1,000 kg)
- Capacities marked with an asterisk (*) are limited by hydraulic capacity.
- Lift capacities shown do not exceed 75% of the minimum tipping load or 87% of hydraulic capacity.
- The least stable position is over the side.
- Lift capacities apply only to the machine as originally manufactured and normally equipped by the manufacturer.
- Lift capacities are in compliance with ISO 10567.
- Text color indicates lifting capacity type.
- Machine in "Power Boost" mode for lifting capacities.



LIFTING CAPACITY

Rating over-side or 360 degree Rating over-side or 360 degree

HX210L

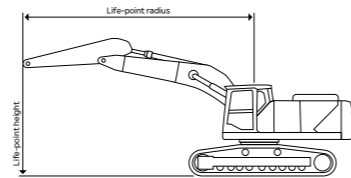
5.7 m (18' 8") boom, 3.5 m (11' 6") thumb ready arm(w/o Lug) equipped with 4.9 ton counterweight and 600 mm (2' 0") triple grouser shoe, None Dozer

Lift-point height (m/ft)	Lift-point radius										At max. reach		
	1.5 m (5 ft)		3.0 m (10 ft)		4.5 m (15 ft)		6.0 m (20 ft)		7.5 m (25 ft)		Capacity		Reach
													m (ft)
7.5 m 25 ft	kg lb										3.93 * 8.65 *	3.93 * 8.65 *	6.87 (22.54)
6.0 m 20 ft	kg lb							4.72 * 10.41 *	4.33 9.55		3.72 * 8.19 *	3.72 * 8.19 *	7.89 (25.87)
4.5 m 15 ft	kg lb					5.87 * 12.94 *	5.87 * 12.94 *	5.51 * 12.15 *	4.26 9.39		3.69 * 8.13 *	3.44 7.59	8.52 (27.95)
3.0 m 10 ft	kg lb		12.88 * 28.38 *	12.88 * 28.38 *	8.53 * 18.81 *	8.53 * 18.81 *	6.83 * 15.06 *	5.76 12.71	5.97 * 13.16 *	4.12 9.09	3.79 * 8.37 *	3.17 7	8.85 (29.05)
1.5 m 5 ft	kg lb				10.54 * 23.23 *	8.25 18.19	7.84 * 17.29 *	5.47 12.06	6.09 13.43	3.98 8.76	4.04 * 8.91 *	3.07 6.77	8.92 (29.28)
0.0 m 0.0 ft	kg lb		7.98 * 17.59 *	7.98 * 17.59 *	11.78 * 25.96 *	7.86 17.32	8.29 18.28	5.25 11.57	5.96 13.14	3.85 8.5	4.48 * 9.88 *	3.12 6.87	8.74 (28.66)
-1.5 m -5 ft	kg lb	7.04 * 15.51 *	7.04 * 15.51 *	11.22 * 24.74 *	11.22 * 24.74 *	12.06 * 26.60 *	7.7 16.98	8.16 17.99	5.13 11.31	5.89 12.99	3.79 8.36	3.33 7.35	8.27 (27.14)
-3.0 m -10 ft	kg lb	10.94 * 24.12 *	10.94 * 24.12 *	16.19 * 35.69 *	14.95 32.97	11.45 * 25.24 *	7.71 17.01	8.15 17.98	5.13 11.3		5.95 13.12	3.84 8.46	7.48 (24.55)
-4.5 m -15 ft	kg lb	16.05 * 35.39 *	16.05 * 35.39 *	13.56 * 29.90 *	13.56 * 29.90 *	9.68 * 21.35 *	7.88 17.38	6.94 * 15.30 *	5.27 11.62		6.48 * 14.28 *	5.01 11.05	6.24 (20.47)

Articulated boom, 2.9 m (9' 6") arti arm equipped with 4.9 ton counterweight and 600 mm (2' 11") triple grouser shoe, None Dozer

Lift-point height (m/ft)	Lift-point radius										At max. reach			
	1.5 m (5 ft)		3.0 m (10 ft)		4.5 m (15 ft)		6.0 m (20 ft)		7.5 m (25 ft)		Capacity		Reach	
													m (ft)	
9.0 m 30 ft	kg lb					6.39 * 14.08 *	6.39 * 14.08 *					5.41 * 11.92 *	5.41 * 11.92 *	4.84 (15.89)
7.5 m 25 ft	kg lb					6.68 * 14.73 *	6.68 * 14.73 *	6.14 * 13.54 *	6.14 * 13.54 *			4.51 * 9.94 *	4.51 * 9.94 *	6.56 (21.53)
6.0 m 20 ft	kg lb					6.74 * 14.85 *	6.74 * 14.85 *	6.40 * 14.12 *	6.11 13.47	4.83 * 10.65 *	4.2 9.26	4.17 * 9.19 *	4.17 * 9.19 *	7.62 (25.01)
4.5 m 15 ft	kg lb		11.69 * 25.76 *	11.69 * 25.76 *	9.27 * 20.43 *	9.21 20.3	6.86 * 15.12 *	5.89 12.99	5.43 * 11.97 *	4.15 9.15	4.07 * 8.97 *	3.51 7.74	8.27 (27.14)	
3.0 m 10 ft	kg lb				11.32 * 24.96 *	8.51 18.76	7.69 * 16.96 *	5.59 12.33	5.70 * 12.56 *	4.02 8.86	4.12 * 9.09 *	3.23 7.12	8.62 (28.28)	
1.5 m 5 ft	kg lb				12.04 * 26.55 *	7.92 17.47	8.42 18.57	5.31 11.71	6.03 13.3	3.88 8.55	4.33 * 9.55 *	3.13 6.9	8.69 (28.51)	
0.0 m 0.0 ft	kg lb				11.60 * 25.57 *	7.64 16.84	8.21 18.1	5.12 11.29	5.92 13.06	3.78 8.34	4.73 * 10.43 *	3.2 7.05	8.50 (27.88)	
-1.5 m -5 ft	kg lb		9.68 * 21.35 *	9.68 * 21.35 *	10.14 * 22.36 *	7.59 16.73	7.80 * 17.20 *	5.05 11.14	5.78 * 12.75 *	3.76 8.28	4.89 * 10.77 *	3.46 7.63	8.02 (26.32)	
-3.0 m -10 ft	kg lb				7.71 * 17.00 *	7.69 16.96	5.96 * 13.14 *	5.11 11.27			3.98 * 8.77 *	3.98 * 8.77 *	7.20 (23.61)	

- At the arm end, without bucket (Unit: 1,000 kg)
- Capacities marked with an asterisk (*) are limited by hydraulic capacity.
- Lift capacities shown do not exceed 75% of the minimum tipping load or 87% of hydraulic capacity.
- The least stable position is over the side.
- Lift capacities apply only to the machine as originally manufactured and normally equipped by the manufacturer.
- Lift capacities are in compliance with ISO 10567.
- Text color indicates lifting capacity type.
- Machine in "Power Boost" mode for lifting capacities.



Rating over-side or 360 degree Rating over-side or 360 degree

HX210L

Articulated boom, 2.9 m (9' 6") arti arm equipped with 4.9 ton counterweight and 800 mm (2' 7") triple grouser shoe, None Dozer

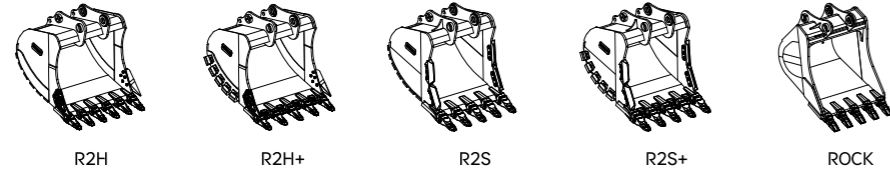
Lift-point height (m/ft)	Lift-point radius										At max. reach			
	1.5 m (5 ft)		3.0 m (10 ft)		4.5 m (15 ft)		6.0 m (20 ft)		7.5 m (25 ft)		Capacity		Reach	
													m (ft)	
9.0 m 30 ft	kg lb					6.39 * 14.08 *	6.39 * 14.08 *					5.41 * 11.92 *	5.41 * 11.92 *	4.84 (15.89)
7.5 m 25 ft	kg lb					6.68 * 14.73 *	6.68 * 14.73 *	6.14 * 13.54 *	6.14 * 13.54 *			4.51 * 9.94 *	4.51 * 9.94 *	6.56 (21.53)
6.0 m 20 ft	kg lb					6.74 * 14.85 *	6.74 * 14.85 *	6.40 * 14.12 *	6.23 13.73	4.83 * 10.65 *	4.29 9.46	4.17 * 9.19 *	4.16 9.18	7.62 (25.01)
4.5 m 15 ft	kg lb		11.69 * 25.76 *	11.69 * 25.76 *	9.27 * 20.43 *	9.27 * 20.43 *	6.86 * 15.12 *	6.01 13.26	5.43 * 11.97 *	4.24 9.35	4.07 * 8.97 *	3.59 7.92	8.27 (27.14)	
3.0 m 10 ft	kg lb				11.32 * 24.96 *	8.68 19.15	7.69 * 16.96 *	5.71 12.6	5.70 * 12.56 *	4.11 9.06	4.12 * 9.09 *	3.31 7.29	8.62 (28.28)	
1.5 m 5 ft	kg lb				12.04 * 26.55 *	8.1 17.86	8.62 18.99	5.43 11.97	6.04 * 13.31 *	3.97 8.75	4.33 * 9.55 *	3.21 7.07	8.69 (28.51)	
0.0 m 0.0 ft	kg lb				11.60 * 25.57 *	7.81 17.23	8.4 18.53	5.24 11.55	6.07 13.37	3.87 8.53	4.73 * 10.43 *	3.27 7.22	8.50 (27.88)	
-1.5 m -5 ft	kg lb		9.68 * 21.35 *	9.68 * 21.35 *	10.14 * 22.36 *	7.76 17.11	7.80 * 17.20 *	5.17 11.41	5.78 * 12.75 *	3.85 8.48	4.89 * 10.77 *	3.54 7.81	8.02 (26.32)	
-3.0 m -10 ft	kg lb				7.71 * 17.00 *	7.71 * 17.00 *	5.96 * 13.14 *	5.23 11.54			3.98 * 8.77 *	3.98 * 8.77 *	7.20 (23.61)	

8.5 m (27' 11") boom, 6.2 m (20' 4") arm equipped with 5.3 ton counterweight and 800 mm (2' 7") triple grouser shoe, None Dozer

Lift-point height (m/ft)	Lift-point radius										At max. reach																			
	1.5 m (5 ft)		3.0 m (10 ft)		4.5 m (15 ft)		6.0 m (20 ft)		7.5 m (25 ft)		9.0 m (30 ft)		10.5 m (35 ft)		12 m (40 ft)		13.5 m (45 ft)		Capacity		Reach									
																					m (ft)									
12.0 m 40 ft	kg lb																			1.09 * 2.41 *	1.09 * 2.41 *	9.79 (32.12)								
10.5 m 35 ft	kg lb											1.69 * 3.73 *	1.69 * 3.73 *							1.00 * 2.20 *	1.00 * 2.20 *	11.16 (36.61)								
9.0 m 30 ft	kg lb											2.32 * 5.12 *	2.32 * 5.12 *	1.19 * 2.63 *	1.19 * 2.63 *					0.95 * 2.08 *	0.95 * 2.08 *	12.18 (39.96)								
7.5 m 25 ft	kg lb											2.70 * 5.95 *	2.70 * 5.95 *	1.98 * 4.36 *	1.98 * 4.36 *					0.92 * 2.03 *	0.92 * 2.03 *	12.96 (42.52)								
6.0 m 20 ft	kg lb											2.88 * 6.34 *	2.76 6.09	2.46 * 5.42 *	2.15 4.74	0.94 * 2.07 *	0.94 * 2.07 *			0.91 * 2.02 *	0.91 * 2.02 *	13.52 (44.35)								
4.5 m 15 ft	kg lb											3.33 * 7.34 *	3.33 * 7.34 *	3.10 * 6.83 *	2.64 5.83	2.88 * 6.34 *	2.08 4.58	1.54 * 3.40 *	1.54 * 3.40 *	0.93 * 2.04 *	0.93 * 2.04 *	13.89 (45.58)								
3.0 m 10 ft	kg lb											6.93 * 15.28 *	6.93 * 15.28 *	5.20 * 11.46 *	5.20 * 11.46 *	4.29 * 9.45 *	4.24 9.35	3.73 * 8.22 *	3.21 7.08	3.36 * 7.40 *	2.51 5.52	3.10 * 6.83 *	1.99 4.38	1.91 * 4.20 *	1.59 3.51	0.96 * 2.11 *	0.96 * 2.11 *	14.10 (46.25)		
1.5 m 5 ft	kg lb											8.80 * 19.39 *	7.8 17.19	6.22 * 13.72 *	5.3 11.69	4.91 * 10.83 *	3.9 8.6	4.13 * 9.11 *	3 6.61	3.63 * 7.99 *	2.37 5.22	3.03 6.68	1.9 4.18	2.11 * 4.64 *	1.54 3.39	1.01 * 2.22 *	1.01 * 2.22 *	14.14 (46.40)		
0.0 m 0.0 ft	kg lb											3.98 * 8.78 *	3.98 * 8.78 *	7.94 * 17.50 *	7.08 15.6	7.04 * 15.51 *	4.85 10.69	5.45 * 12.02 *	3.61 7.96	4.48 9.88	2.81 6.19	3.59 7.91	2.24 4.93	2.94 6.49	1.81 4	2.10 * 4.63 *	1.49 3.28	1.08 * 2.38 *	1.08 * 2.38 *	14.02 (46.01)
-1.5 m -5 ft	kg lb	3.83 * 8.44 *	3.83 * 8.44 *	4.83 * 10.64 *	4.83 * 10.64 *	7.66 * 16.89 *	6.74 14.86	7.54 * 16.63 *	4.56 10.06	5.58 12.3	3.4 7.5	4.32 9.53	2.66 5.86	3.48 7.67	2.14 4.71	2.87 6.34	1.75 3.85	1.74 * 3.83 *	1.45 3.21	1.18 * 2.60 *	1.18 * 2.60 *	13.74 (45.08)								
-3.0 m -10 ft	kg lb	4.88 * 10.76 *	4.88 * 10.76 *	5.88 * 12.97 *	5.88 * 12.97 *	8.36 * 18.43 *	6.63 14.61	7.51 16.55	4.42 9.74	5.44 11.99	3.27 7.22	4.22 9.3	2.56 5.65	3.41 7.51	2.07 4.56	2.83 6.24	1.71 3.76			1.32 * 2.92 *	1.32 * 2.92 *	13.29 (43.59)								
-4.5 m -15 ft	kg lb	5.98 * 13.19 *	5.98 * 13.19 *	7.09 * 15.64 *	7.09 * 15.64 *	9.56 * 21.07 *	6.64 14.65	7.46 16.45	4.38 9.65	5.38 11.86	3.22 7.1	4.17 9.2	2.52 5.55	3.38 7.45	2.04 4.5	2.82 6.23	1.7 3.75			1.54 * 3.39 *	1.54 * 3.39 *	12.63 (41.43)								
-6.0 m -20 ft	kg lb	7.17 * 15.81 *	7.17 * 15.81 *	8.48 * 18.70 *	8.48 * 18.70 *	9.68 * 21.33 *	6.76 14.9	7.38 * 16.26 *	4.42 9.74	5.4 11.9	3.24 7.14	4.18 9.22	2.53 5.57	3.4 7.49	2.06 4.54					1.86 * 4.11 *	1.79 3.95	11.75 (38.57)								
7.																														

BUCKET SELECTION GUIDE & DIGGING FORCE

HX210L



Type	Capacity m³ (yd³)		Width mm (in)	Weight kg (lb)	Tooth EA	Recommendation mm (ft-in)						
	SAE heaped	CECE heaped				5,700 (18' 8") Boom			3,100+2,800 (10' 2" + 9' 2") 2PCS Boom		8,500 (27' 11") Boom	
						2,400 (7' 10") Arm	2,900 (9' 6") Arm	3,500 (11' 6") Arm	2,900 HD Arm	2,400 (7' 10") Arm	2,900 (9' 6") Arm	6,200 (20' 4") Arm
R1G	0.81 (1.06)	0.72 (0.94)	1,125 (44.3")	680 (1,500)	5	●	●	●	●	●	●	-
R1G	0.86 (1.12)	0.76 (0.99)	1,170 (46.1")	692 (1,530)	5	●	●	●	●	●	●	-
R1G	0.92 (1.20)	0.81 (1.06)	1,233 (48.5")	720 (1,590)	5	●	●	●	●	●	●	-
R1G	1.05 (1.37)	0.92 (1.20)	1,369 (53.9")	772 (1,700)	5	●	●	●	●	●	●	-
R1G	1.17 (1.53)	1.00 (1.31)	1,490 (58.7")	830 (1,830)	6	●	●	○	●	●	○	-
R1G	1.28 (1.67)	1.11 (1.45)	1,604 (63.1")	870 (1,920)	6	●	○	■	○	○	■	-
R2H	0.60 (0.78)	0.56 (0.73)	796 (31.3")	700 (1,540)	4	●	●	●	●	●	●	-
R2H	0.92 (1.20)	0.83 (1.09)	1,096 (43.1")	855 (1,880)	5	●	●	●	●	●	●	-
R2H	1.08 (1.41)	0.97 (1.27)	1,246 (49.1")	924 (2,040)	5	●	●	○	●	●	○	-
R2H	1.24 (1.62)	1.11 (1.45)	1,396 (55.0")	993 (2,190)	5	●	○	■	○	○	■	-
R2H	1.35 (1.77)	1.20 (1.57)	1,498 (59.0")	1,056 (2,330)	6	○	■	■	■	■	■	-
R2H	1.40 (1.83)	1.25 (1.63)	1,546 (60.9")	1,079 (2,380)	6	○	■	▲	■	■	■	-
R2H+	1.08 (1.41)	0.97 (1.27)	1,246 (49.1")	1,034 (2,280)	5	●	●	○	●	●	○	-
R2S	0.91 (1.19)	0.83 (1.09)	1,094 (43.1")	1,050 (2,310)	4	●	●	●	●	●	●	-
R2S	1.07 (1.40)	0.97 (1.27)	1,244 (49.0")	1,156 (2,550)	5	●	●	○	●	●	○	-
R2S	1.23 (1.61)	1.11 (1.45)	1,394 (54.9")	1,238 (2,730)	5	○	○	■	■	○	■	-
R1H	0.92 (1.20)	0.80 (1.05)	1,264 (49.8")	741 (1,630)	5	●	●	●	●	●	●	-
R1H	1.05 (1.37)	0.90 (1.18)	1,397 (55.0")	788 (1,740)	5	●	●	●	●	●	●	-
R1H	1.17 (1.53)	1.03 (1.35)	1,519 (59.8")	849 (1,870)	6	●	●	○	●	●	○	-
R1S	1.05 (1.37)	0.92 (1.20)	1,397 (55.0")	991 (2,180)	5	●	●	○	●	●	○	-
NA	0.85 (1.11)	0.76 (0.99)	914 (36.0")	864 (1,900)	5	●	●	●	●	●	●	-
NA	1.00 (1.31)	0.89 (1.16)	1,067 (42.0")	927 (2,040)	5	●	●	●	●	●	●	-
NA	1.15 (1.50)	1.01 (1.32)	1,219 (48.0")	1,014 (2,240)	6	●	●	○	○	●	○	-
LR	0.39 (0.51)	0.35 (0.46)	825 (32.5")	344 (0,760)	4	-	-	-	-	-	-	●
LR	0.51 (0.67)	0.45 (0.59)	996 (39.2")	396 (0,870)	5	-	-	-	-	-	-	●
DC(tooth)	0.45 (0.59)	0.38 (0.50)	1,500 (59.1")	360 (0,790)	7	-	-	-	-	-	-	●
DC	0.45 (0.59)	0.40 (0.52)	1,520 (59.8")	402 (0,890)	-	-	-	-	-	-	-	●
SL	0.55 (0.72)	0.45 (0.59)	1,800 (70.9")	584 (1,290)	-	-	-	-	-	-	-	○

● : Applicable for materials with density of 2,100 kg/m³ (3,500 lb/yd³) or less
 ○ : Applicable for materials with density of 1,800 kg/m³ (3,000 lb/yd³) or less
 ▲ : Applicable for materials with density of 1,500 kg/m³ (2,500 lb/yd³) or less
 ■ : Applicable for materials with density of 1,200 kg/m³ (2,000 lb/yd³) or less
 - : Not Recommended

ATTACHMENT

Booms and arms are welded with a low-stress, full-box section design.
 6,200mm (20' 4"), 6,500mm (21' 4") Booms and 2,600 (8' 6"), 2,900 (9' 6"), 3,200 (10' 6"), 3,950 (12' 12") Arms are available.
 Hyundai Buckets are all-welded, high-strength steel implements.

DIGGING FORCE

Length	Boom Arm	mm (ft.in)	5,700 (18' 8")			3,100+2,800 (10' 2" + 9' 2")2PCS		8,500 (27' 11")	Remark
			2,400 (7' 10")	2,900 (9' 6")	3,500 (11' 6")	2,400 (7' 10")	2,900 (9' 6")	6,200 (20' 4")	
Bucket Digging Force	SAE	kN	R1G: 130.5 (141.3) NA: 130.0 (141.1)					85.3 (93.2)	Nominal (Boost)
		kgf	R1G: 13,310 (14,410) NA: 13,260 (14,390)					8,698 (9,504)	
		lbf	R1G: 29,340 (31,770) NA: 29,230 (31,720)					19,176 (20,952)	
	ISO	kN	R1G: 149.1 (161.9) NA: 146.0 (158.5)					100.1 (108.9)	
		kgf	R1G: 15,200 (16,510) NA: 14,890 (16,160)					10,207 (11,105)	
		lbf	R1G: 33,520 (36,400) NA: 32,820 (35,630)					22,503 (24,482)	
Arm Crowd Force	SAE	kN	119.7 (129.5)	103.0 (111.8)	92.2 (100.1)	119.7 (129.5)	103.0 (111.8)	57.9 (62.8)	
		kgf	12,200 (13,200)	10,500 (11,400)	9,400 (10,200)	12,200 (13,200)	10,500 (11,400)	5,900 (6,400)	
		lbf	26,910 (29,110)	23,160 (25,140)	20,730 (22,490)	26,910 (29,110)	23,160 (25,140)	13,010 (14,110)	
	ISO	kN	123.6 (134.4)	105.9 (114.8)	95.2 (103.0)	123.6 (134.4)	105.9 (114.8)	58.9 (63.8)	
		kgf	12,600 (13,700)	10,800 (11,700)	9,700 (10,500)	12,600 (13,700)	10,800 (11,700)	6,000 (6,500)	
		lbf	27,790 (30,210)	23,820 (25,800)	21,390 (23,160)	27,790 (30,210)	23,820 (25,800)	13,230 (14,330)	

Note : Boom weight includes arm cylinder, piping, and pin Arm weight includes bucket cylinder, linkage, and pin

STANDARD / OPTION

HYDRAULIC SYSTEM	STD
Variable Power Control	●
Electric Pump Flow Control	●
Attachment Mode Flow Control	●
Engine Auto Idle	●
Engine Auto Shutdown Control	●
CAB & INTERIOR	STD
ISO STANDARD CABIN	
Additional 2 Working Lamp (HAL)	
Additional 2 Working Lamp (LED)	●
Additional 6 Working Lamp (LED)	
Cabin Upper and Lower Guard	
Cabin Lower Guard only	
Cabin Rain Shield	
Radio / MP3 (Stereo)	●
DAB Audio (Handsfree&Bluetooth)	
Electric Horn	●
Safety Glass - Tempered Glass	●
Safety Glass - Laminated Glass (front)	
Sliding Fold-In Front Window	●
Sliding Slide Window (LH)	●
Lockable Door	●
Hot & Cool Box	●
Storage Compartment	●
Multi Channel Speaker (4 locations)	●
AUTOMATIC CLIMATE CONTROL	
Air Conditioner & Heater	●
Defroster	●
AUTOMATIC STARTING AID (AIR GRID HEATER) FOR WEATHER	
Starting Aid (Air Grid Heater) for Cold Weather	●
Engine Coolant Heater & Plug Heater (110V Plug Heater)	
Engine Coolant Heater & Plug Heater (220V Plug Heater)	
ADDITIONAL GAUGE PANEL (AGP)	
Primary 12" Display	●
Secondary 12" Display	
Engine RPM or Trip Meter / Accel	●
Engine Coolant Temperature Gauge	●
Max Power / Low&High Speed / Engine Check indicator	●
Auto Idle	●
Overload Warning with alarm	
Eco Gauge / Fuel Level / Hyd. Oil Temperature Gauge	●
Air Cleaner Clogging	●
Fuel Warmer	●
Warnings	●
Communication Error	●
Low Battery / Clock	●
SEAT	
Heated and Ventilated Seat	
Heating Seat	●
Air suspension seat	
Mechanical suspension seat	
CABIN GUARD SYSTEM	
FOGS (Falling Object Guard System), ISO 10262 Level 2	
Upper and Lower Cabin front guard	
Lower Cabin front guard	
CABIN ROPS (ISO) 12117-2	
ROPS (Roll Over Protective Structures)	●

* Standard and optional equipment may vary. Contact your Hyundai dealer for more information.
 The machine may vary according to International standards.
 * The photos may include attachments and optional equipment that are not available in your area.
 * Materials and specifications are subject to change without advance notice.
 * All imperial measurements rounded off to the nearest pound or inch.

SAFETY	STD
Battery Master Switch	●
Right and Rear View Camera	●
Smart Around View Camera (SAVM)	
Advanced Detection System	
Travel and Swing Alarm	
White noise Travel and Swing Alarm	
Beacon Lamp	
Automatic Swing Brake	●
Boom Holding Valve	
Boom and Arm Holding Valve	
Overload Warning Device	●
NEW TECHNOLOGY	STD
Machine Guidance (MG)	
Machine Guidance (MG) with 2D MG Laser Receiver	
Digital Key	
OTHERS	STD
Microphone	
Breaker Filter	
Pre Cleaner	
Fine Swing	
Straight Travel	
Hi MATE (Telematics)	●
Air Compressor	
Side Protector	
Fuel Filler Pump	
Shoe Case	
Double-Acting Piping with Pedal	●
Rotating Piping (PERO)	
Quick Coupler	
Quick Coupler Piping	●
Tool Kit	
BOOMS	
5.7 m	●
5.7 m HD (Heavy Duty)	
8.5 m	
2-piece: 3.1 m + 2.8 m	
ARMS	
2.4m	
2.4m HD (Heavy Duty)	
2.9 m	●
2.9m HD (Heavy Duty)	
2.9m Thumb Ready Arm (without lug)	
3.5m	
3.5m Thumb Ready Arm (without lug)	
6.2m	
COUNTERWEIGHT	
4.2 ton	
4.9 ton	
5.3 ton (for Long Reach)	
UNDERCARRIAGE	STD
DOZER	
Dozer	
TRACK SHOES	
600 mm Shoe	●
700 mm Shoe	
800 mm Shoe	
900 mm Shoe	
TRACK GUARD	
Two Single Track Guards per Side	●