

HX260

The Next Generation of Excavators

27 Ton Medium Excavator
171 kW (229 HP) / 1,900 rpm



HYUNDAI



ABOVE AND BEYOND

THE NEXT GENERATION OF EXCAVATORS

Hyundai vision of delivering a refined yet dignified design, offering customers an experience of understated elegance and sophistication.

Productivity

- Enhanced Operating Performance and Durability
- Top-Level Lifting Power and Stability
- Machine Guidance(2D) & Smart Control
- Breaker Assist & Auto Breaker
- New Designed Joystick
- Weighing
- Enhanced Predictive & Preventive Maintenance Functions
- Non-Face-to-Face Remote Diagnosis & Response Functions

Safety

- SAVM (Smart Around View Monitoring)
 - AI-powered real-time detection and alert system for surrounding individuals.
- Lifting Performance Visualization & Risk Warning System
- Lift Assist Pro
 - Real-time tip-over alerts and equipment status monitoring
- Operator Guide and Work Efficiency Enhancement

Comfort

- Auto-Stop
- User-Friendly Interface
- Cabin Design Maximizing Operator Convenience
- Ambient Light Application
- Providing Top-Level Operational Convenience
- Real-time Flow Control and Optimization
- Fuel Efficiency Improvement and Efficiency Maximization

Smart & Serviceability

- Digital Platform 'HYUNDAI CONNECT'
- Digital Key Function (Hyundai Connect App Integration)
- Equipment Operation History Inquiry and Analysis
 - Optimized Fleet & Rental Equipment Management

PRODUCTIVITY

Powerful sophistication that takes you further ahead

The HX260L's high-performance engine with a robust design delivers outstanding fuel efficiency and high productivity. It provides a comfortable work environment for the operator to work more precisely and efficiently.



FEH (Fully Electro-Hydraulic) System

The new machines have a FEH system that improves fuel consumption by controlling flow rate via a CPU.



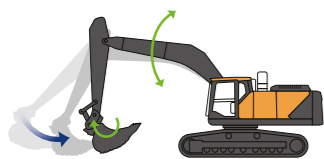
Equipped with HYUNDAI engine

The HX230L have a new high-performance Stage V Hyundai engine, with enhanced durability and improved ease of maintenance.



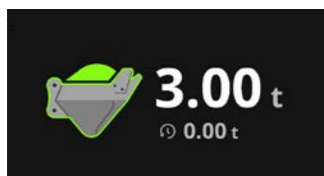
Enhanced digging force

A large-capacity bucket with improved cutting edge has greatly increased productivity compared to the standard bucket size.



Grade Assist(Grade/Bucket)

The boom and bucket are automatically controlled by simply operating the arm. This makes levelling easier and improves precision.



Weighing

By estimating and displaying the weight of objects in the bucket in real time, you can calculate truck costs and shipping volumes on site.



PRODUCTIVITY

6.4% [↑] up

FUEL EFFICIENCY

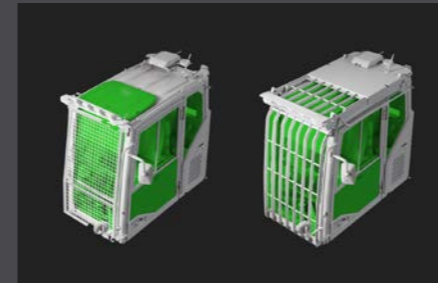
13.1% [↑] up

SAFETY

Enhanced safety with a strong exterior

The true value of the HX260L comes from its durability and high productivity.

The strong upper and lower structures can withstand external shocks and high-load operations, and the work performance verified by rigorous performance tests provides high reliability even in harsh environments



Cabin guard

A guard is installed to protect the operator from falling objects from above during work in rough terrain such as mines.



New designed counterweight

A newly designed counterweight enhances the machine's powerful appearance and gives customers a sense of pride.



Built-in rear lamp and camera

A rear lamp and camera are built into the counterweight, increasing their durability and improving the exterior design.



Side Access

New model is designed to make operator to get maintenance easy by giving side access structure in order to climb up the machine.



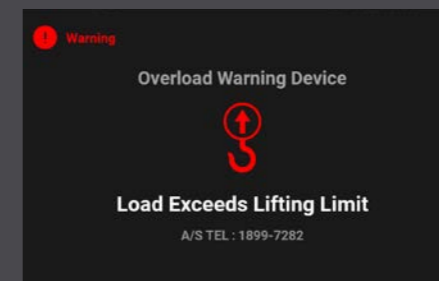
Beacon lamp

Four beacon lamps mounted on the upper corner of the cabin help when there is poor visibility due to dust on site.



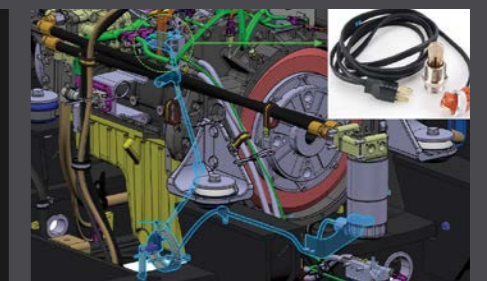
Enhanced Boom and Arm durability

Both the boom and arm have been redesigned to be more durable by increasing the box size of the boom and changing the structure of the arm.



Overload warning notification

When an overload is detected, a first warning is displayed. Following that, a colored notification fully informs the operator of the risk of overturning.



Improved start-up in ultra-low temperature environments OPTION

The engine's internal temperature is increased by heating the coolant with electric heaters in the engine through an external power source, which helps start the engine in extremely cold environments. It is compatible with both 110V and 220V, depending on the region's operating environment.

COMFORT

Interior that completes a comfortable journey

The interior design reflects the strength and dignity of Hyundai Construction Equipment, and incorporates productivity and convenience.

The advanced infotainment system with advanced convenience technology completes an efficient work journey and provides a comfortable working environment.



1. 12.8-inch large screen

The large 12.8-inch FHD screen provides excellent legibility compared to the 8-inch screen of the previous model. It can also be divided into sections, allowing the operator to check multiple conditions at once.

2. More comfortable seats

Three options of seat are available to make all operators feel comfortable in any work environment.

3. Stylish interior lighting

The H-line interior lighting adds value and sophistication to the interior.

4. Premium-quality colors

With more refined colors than our existing products, it enhances the dignity of on-site professionals.

5. Modern audio system

DAB functionality enables Bluetooth and digital radio broadcast reception. It supports up to Multi-channel of speaker output.

6. Separate driving straight-ahead pedal

When driving long distances, the equipment can be driven straight with a separate straight-ahead pedal without a separate switch. When not in use, the pedal can be used as a footrest by locking the function.

7. Improved lever operability and FEH system

The spring strength has been adjusted ergonomically to improve the operator's comfort and the FEH system has been applied to optimize performance and enhance safety.

8. Convenient joystick steering

The joystick steering that comes as standard, allows operators to drive forwards, backwards and turn left or right.

SMART

Technology that makes safety perfect

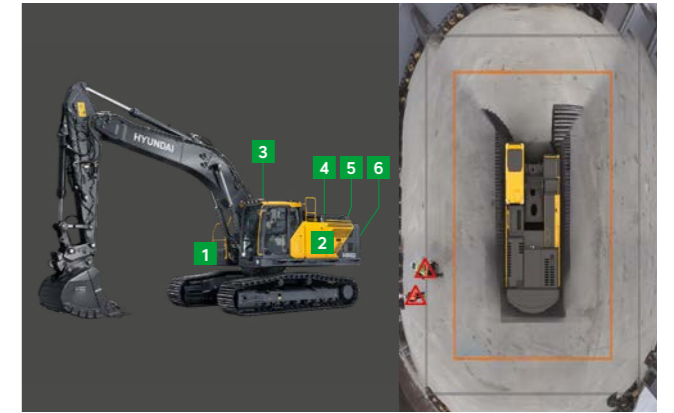
With cutting-edge technology and design optimized for hazardous work environments, safety of operators is guaranteed.

By allowing operators to focus on their work without worrying about safety issues, it will become a reliable partner on the grand journey.



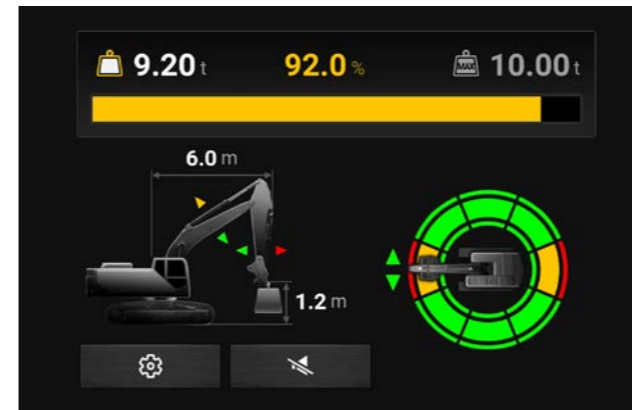
Auto-Stop OPTION

Designed as a critical safety aid, HYUNDAI Auto-Stop uses AI sensor fusion to detect workers within a 330° range. To prevent fatalities, the system overrides operation by decelerating at 6m and fully stopping at 4m, ensuring safety even during operator oversights.



SAVM (Smart Around View Monitoring) OPTION

SAVM detects people and objects around the equipment in real time using AI and displays warning signs on the monitor. Six cameras allow you to view a video on a big 12.8-inch screen.



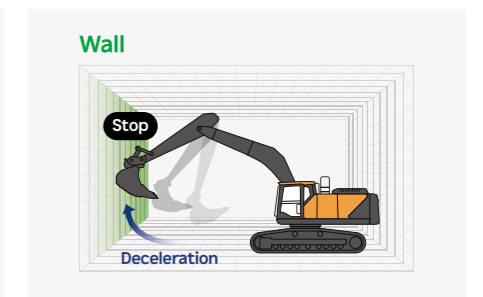
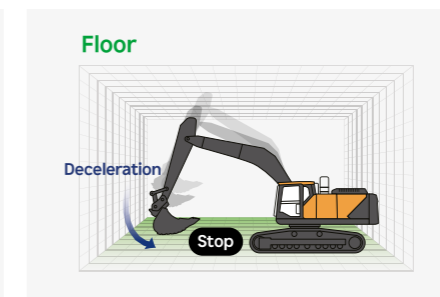
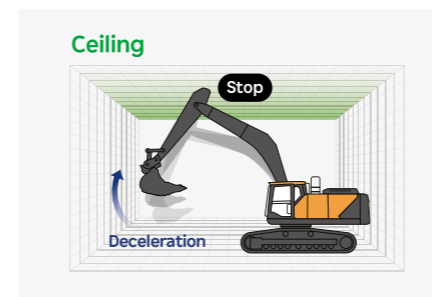
Lift Assist Pro

Lift safely with Lift Assist Pro. This feature monitors equipment posture and pressure to display your available lift capacity in real-time. If you approach a tipping point or hydraulic limit, the system issues immediate alerts, guiding you back to a safe position.



White noise buzzer

The white noise alert tone using wideband frequency quickly notifies the location of the equipment, and the sound wave quickly dissipates compared to a general buzzer, eliminating noise complaints from the surrounding area.



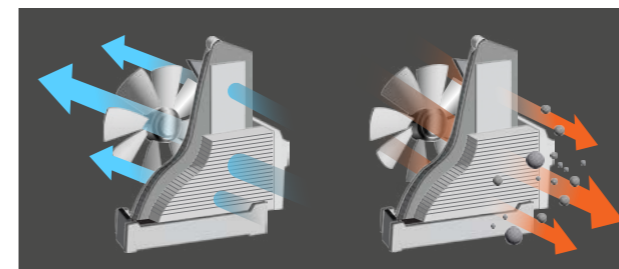
E-Boundary smart control for improved safety

You can set a virtual restricted area based on the local coordinate system of the equipment. It improves safety by warning the operator when there is a risk of contact with areas such as the floor, ceiling and wall

SERVICEABILITY

Convenient maintenance with smart technology

We are creating smart construction sites with digital technology based on IoT, ICT, and AI. You can control and monitor the site using a computer or smartphone, allowing for more efficient work time management.



Easy maintenance and cleaning with reversible fan

The reversible fan function allows for easy maintenance and cleaning of the fan, which increases maintainability and helps to increase the equipment's durability.



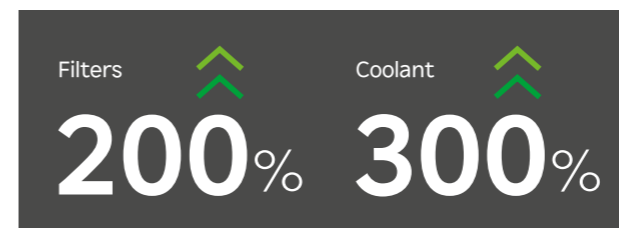
Simplified after-treatment device

The simplified integrated after-treatment device minimizes failure factors and applies an automatic after-treatment device regeneration system that does not require frequent forced regeneration.



Increased convenience of replacing filters

The filters in the pump room have been rearranged and the opening area of the filter cover has been expanded to improve the ease of maintenance.

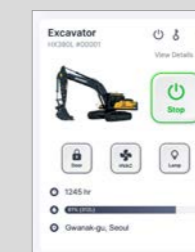


Long-life filters and coolant

Replacement intervals for engine oil, engine oil filters, and fuel filters have been extended from 500 to 1,000 hours (when CK-4 engine oil is used) and coolant replacement intervals have been extended from 2,000 to 6,000 hours.

HYUNDAI CONNECT

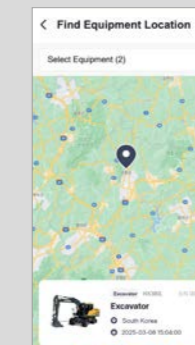
HYUNDAI CONNECT is the latest technology that allows you to check and manage the operating status of equipment, the presence of any abnormalities, and consumable information that requires periodic management, using a computer or smartphone via the mobile phone network. You can check the status of equipment in operation on site, even in the office or on the move, without any time or space constraints, and manage the equipment along with service selection.



Digital Key & Remote Start/Climate Control

With the Hyundai Connect app, you can start the equipment and remotely control various functions (climate control, horn, lamps, door lock/unlock) without a physical key. You can register multiple drivers using

a smartphone and preheat the equipment or adjust the cabin for a comfortable environment before boarding.



Location tracking and theft prevention function

You can check the location of your equipment through the Hyundai Connect web or mobile app and track its route if it is in motion. Additionally, you can set up alerts to prevent theft or misuse if the equipment moves outside a predefined area.



Maintenance notifications

If there is a risk of failure after notification and diagnosis of the consumable replacement cycle, the system provides tips on how to deal with the type of failure.



Fleet Monitoring Dashboard & Reports

Through the web and app, you can monitor equipment operation details such

as working hours and idle time. You can also configure a dashboard to display key data, including fuel consumption and carbon emissions, or generate detailed equipment reports as needed.

SPECIFICATIONS

ENGINE	
Maker / Model	HYUNDAI / DX05
Type	4-cycle, turbocharged, charge air cooled, controlled by ECU
Rated Power (SAE J1995)	229 HP(171kW) at 1,900 rpm
Max. Torque	955 N·m (704 lb·ft) at 1,400 rpm

HYDRAULIC SYSTEM	
MAIN PUMP	
Type	Swash plate, axial piston
Max. Oil Flow	2x237.5 ℓ /min (2x62.7 us gpm)
Cross-sensing and fuel saving pump system.	

PILOT PUMP	
Displacement	15 cc/rev
Max. Flow rate	28.5 Liter/min (7.52 us gpm)

MCV	
Type	EPPR Control
No. of spools	10 ea

HYDRAULIC CYLINDERS	
No. of Cylinder	Boom : Ø130x1,385 mm
Bore X Stroke	Arm : Ø140x1,655 mm
	Bucket : Ø130x2,720 mm

TRAVEL SYSTEM	
Travel motor type	Axial piston, 2-speed
Displacement	155.4 cc/89.8 rev
Max. output torque	848 Nm
Max. Travel Speed (High / Low)	5.8 km/hr(3.6mph) / 3.5 km/hr(2.17mph)
Gradeability	35°(70%)

SWING MECHANISM	
Type	Hydraulic piston motor
Swing Reduction	2 stage reduction gear
Swing Bearing Lubrication	Grease-bathed
Swing Brake	Multi wet disc
Swing Speed	10.4 rpm

COOLANT & LUBRICANT CAPACITY		
	liter	US gal
Fuel Tank	467	123
Engine Coolant	30.6	8.08
Engine Oil	26	6.9
Hydraulic Oil Tank	276	72.9
Def/Adblue®	57.2	15.1

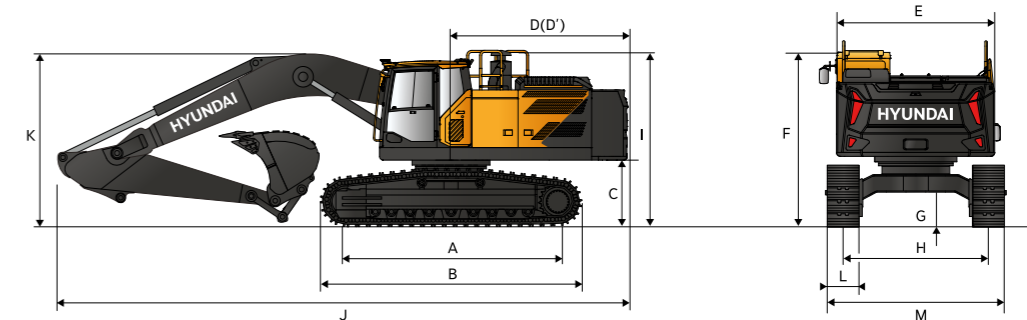
UNDERCARRIAGE	
The X-leg type center frame is integrally welded with reinforced box-section track frames. The undercarriage includes lubricated rollers, idlers, track adjusters with shock absorbing springs and sprockets, and a track chain with double or triple grouser shoes.	
Center Frame	X - Leg Type
Track Frame	Pentagonal Box Type
No. of link on Each Side	51
No. of Carrier Roller on Each Side	2
No. of Track Roller on Each Side	9

OPERATING WEIGHT (APPROXIMATE)	
Operating weight, including 5,900 mm (19' 4") boom, 3,000 mm (9' 10") arm, SAE heaped 1.17 m³ (1.53 yd³) bucket, 5,500 kg (12,125 lb) counterweight, 800 mm(32") track shoe lubricant, coolant, full fuel tank, full hydraulic tank, and all standard equipments.	

OPERATING WEIGHT			
Shoes	Operating Weight		Ground Pressure
Type	Width mm(in)	kg (lb)	kgf/cm² (psi)
Triple Grouser	600 (24")	HX260L	26,460(58,330) 0.54(7.66)
		HX260NL	26,370(58,140) 0.54(7.63)
	700 (28")	HX260L	26,750(58,970) 0.47(6.64)
	800 (32")	HX260L	27,080(59,700) 0.41(5.88)
	900 (36")	HX260L	27,350(60,300) 0.37(5.28)

DIMENSIONS & WORKING RANGE

HX260L DIMENSIONS	
5.9 m (19' 4"), 2PCS BOOM and 3.0m (9' 10"), 3.5 m (11' 6"), 2.5m (8' 2") ARM	

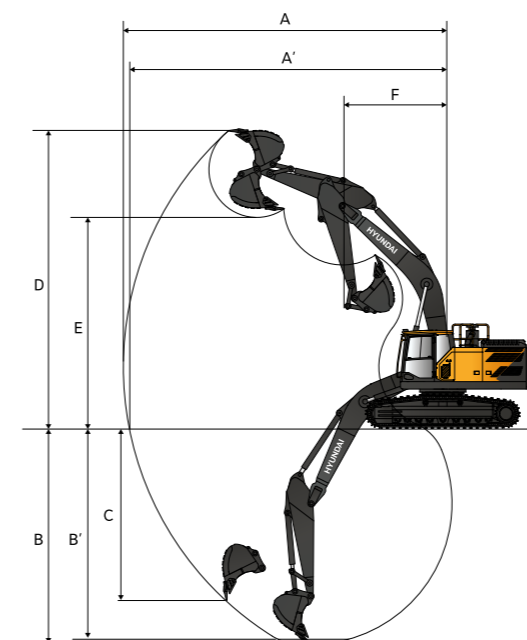


Unit : mm (ft · in)

A Tumbler Distance	3,835 (12' 7")
B Overall Length of Crawler (W/ Grouser)	4,628 (15' 2")
C Ground Clearance of Counter Weight (W/ Grouser)	1,085.5 (3' 7")
D Tail Swing Radius	3,073 (10' 1")
D' Rear-End Length	3,040 (10' 0")
E Overall Width of Upper Structure	2,710 (8' 11")
F Overall Height of Cab	3,095 (10' 2")
G Min. Ground Clearance	424 (1' 5")
H Track gauge	HX260L 2,600 (8' 6") HX260NL 2,400 (7' 10")
I Overall Height of Guardrail (W/ Grouser)	3,304 (10' 10")

	5,900 (19' 4")			3,050+3,050 (10' 0" + 10' 0")		
	2,500 (8' 2")	3,000 (9' 10")	3,500 (11' 6")	2,500 (8' 2")	3,000 (9' 10")	3,500 (11' 6")
Boom Length						
Arm Length						
J Overall Length	7,105 (23' 4")	10,085 (33' 1")	10,110 (33' 2")	7,250 (23' 9")	10,265 (33' 8")	7,155 (23' 6")
K Overall Height of Boom	3,345 (11' 0")	3,235 (10' 7")	3,597 (11' 10")	3,095 (10' 2")	3,115 (10' 3")	3,510 (11' 6")
L Track Shoe Width	600 (24")	700 (28")	800 (32")	900 (36")		
M Overall Width w/o Additional Foot Board	3,200 (10' 6")	3,300 (10' 10")	3,400 (11' 2")	3,500 (11' 6")		
	HX260L					
		3,000 (9' 10")	3,100 (10' 2")	3,200 (10' 6")	3,300 (10' 10")	

HX260L WORKING RANGE



Unit : mm (ft · in)

	5,900 (19' 4")			3,050+3,050 (10' 0" + 10' 0")		
	2,500 (8' 2")	3,000 (9' 10")	3,500 (11' 6")	2,500 (8' 2")	3,000 (9' 10")	3,500 (11' 6")
Boom length						
Arm length						
A Max. digging reach	9,645 (31' 8")	10,170 (33' 4")	10,600 (34' 9")	9,950 (32' 8")	10,480 (34' 5")	10,930 (35' 10")
A' Max. digging reach on ground	9,450 (31' 0")	9,990 (32' 9")	10,430 (34' 3")	9,760 (32' 0")	10,305 (33' 10")	10,760 (35' 4")
B Max. digging depth	6,305 (20' 8")	6,810 (22' 4")	7,310 (24' 0")	6,205 (20' 4")	6,730 (22' 1")	7,205 (23' 8")
B' Max. digging depth (8' level)	6,040 (19' 10")	6,615 (21' 8")	7,135 (23' 5")	6,090 (20' 0")	6,625 (21' 9")	7,105 (23' 4")
C Max. vertical digging depth	6,460 (21' 2")	6,375 (20' 11")	6,640 (21' 9")	6,090 (20' 0")	6,625 (21' 9")	7,105 (23' 4")
D Max. digging height	9,355 (30' 8")	9,770 (32' 1")	9,890 (32' 5")	11,060 (36' 3")	11,580 (38' 0")	11,875 (39' 0")
E Max. dumping height	6,650 (21' 10")	7,025 (23' 1")	7,170 (23' 6")	6,205 (20' 4")	6,730 (22' 1")	7,205 (23' 8")
F Min. swing radius	3,730 (12' 3")	3,715 (12' 2")	3,755 (12' 4")	3,080 (10' 1")	2,940 (9' 8")	3,280 (10' 9")

LIFTING CAPACITY

Rating over-side or 360 degree Rating over-side or 360 degree

HX260L

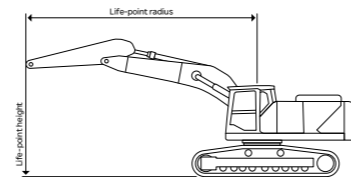
5.9 m (19' 4") boom, 3.0 m (9' 10") arm equipped with 4.7ton CTW and 600mm(2' 0") triple grouser shoe.

Lift-point height (m/ft)	Lift-point radius										At max. reach			
	1.5 m (5 ft)		3.0 m (10 ft)		4.5 m (15 ft)		6.0 m (20 ft)		7.5 m (25 ft)		Capacity		Reach	
													m (ft)	
7.5 m 25 ft	kg lb						6.60 * 14.54 *	6.60 * 14.54 *			5.26 * 11.61 *	5.26 * 11.61 *	6.66 (21.85)	
6.0 m 20 ft	kg lb						6.75 * 14.87 *	6.75 * 14.87 *	5.91 * 13.04 *	4.9 10.8	4.99 * 10.99 *	4.7 10.35	7.68 (25.21)	
4.5 m 15 ft	kg lb					8.87 * 19.55 *	8.87 * 19.55 *	7.53 * 16.61 *	6.83 15.06	6.87 * 15.16 *	4.82 10.63	4.95 * 10.92 *	4.07 8.97	8.32 (27.28)
3.0 m 10 ft	kg lb					11.27 * 24.84 *	9.96 21.96	8.65 * 19.07 *	6.5 14.34	6.97 15.36	4.67 10.3	5.11 * 11.26 *	3.75 8.27	8.64 (28.35)
1.5 m 5 ft	kg lb					13.31 * 29.34 *	9.33 20.56	9.53 21.01	6.19 13.65	6.8 14.99	4.52 9.96	5.46 12.03	3.64 8.03	8.69 (28.52)
0.0 m 0.0 ft	kg lb					7.56 * 16.68 *	7.56 * 16.68 *	14.23 * 31.37 *	9.01 19.86	9.29 20.49	5.98 13.19	6.67 14.71	4.4 9.7	8.48 (27.83)
-1.5 m -5 ft	kg lb	8.67 * 19.11 *	8.67 * 19.11 *	13.13 * 28.95 *	13.13 * 28.95 *	14.09 * 31.07 *	8.93 19.68	9.2 20.28	5.9 13	6.63 14.62	4.36 9.62	6.08 13.41	4.03 8.88	7.98 (26.19)
-3.0 m -10 ft	kg lb	14.38 * 31.71 *	14.38 * 31.71 *	18.00 * 39.69 *	18.00 * 39.69 *	12.97 * 28.60 *	9.01 19.87	9.25 20.38	5.94 13.1			7.19 15.86	4.73 10.43	7.14 (23.42)
-4.5 m -15 ft	kg lb			14.12 * 31.14 *	14.12 * 31.14 *	10.41 * 22.96 *	9.27 20.45					7.61 * 16.77 *	6.47 14.26	5.80 (19.02)

5.9 m (19' 4") boom, 3.0 m (9' 10") arm equipped with 4.7ton CTW and 800mm(2' 0") triple grouser shoe.

Lift-point height (m/ft)	Lift-point radius										At max. reach			
	1.5 m (5 ft)		3.0 m (10 ft)		4.5 m (15 ft)		6.0 m (20 ft)		7.5 m (25 ft)		Capacity		Reach	
													m (ft)	
7.5 m 25 ft	kg lb						6.60 * 14.54 *	6.60 * 14.54 *			5.26 * 11.61 *	5.26 * 11.61 *	6.66 (21.85)	
6.0 m 20 ft	kg lb						6.75 * 14.87 *	6.75 * 14.87 *	5.91 * 13.04 *	5.01 11.04	4.99 * 10.99 *	4.8 10.58	7.68 (25.21)	
4.5 m 15 ft	kg lb					8.87 * 19.55 *	8.87 * 19.55 *	7.53 * 16.61 *	6.97 15.36	6.87 * 15.16 *	4.93 10.86	4.95 * 10.92 *	4.16 9.17	8.32 (27.28)
3.0 m 10 ft	kg lb					11.27 * 24.84 *	10.17 22.41	8.65 * 19.07 *	6.64 14.64	7.13 15.73	4.78 10.53	5.11 * 11.26 *	3.84 8.47	8.64 (28.35)
1.5 m 5 ft	kg lb					13.31 * 29.34 *	9.53 21.02	9.72 * 21.43 *	6.33 13.96	6.96 15.35	4.62 10.19	5.46 * 12.04 *	3.73 8.23	8.69 (28.52)
0.0 m 0.0 ft	kg lb					7.56 * 16.68 *	7.56 * 16.68 *	14.23 * 31.37 *	9.21 20.31	9.52 20.99	6.12 13.5	6.84 15.07	4.51 9.94	8.48 (27.83)
-1.5 m -5 ft	kg lb	8.67 * 19.11 *	8.67 * 19.11 *	13.13 * 28.95 *	13.13 * 28.95 *	14.09 * 31.07 *	9.13 20.14	9.42 20.77	6.04 13.31	6.79 14.98	4.47 9.85	6.24 13.75	4.12 9.09	7.98 (26.19)
-3.0 m -10 ft	kg lb	14.38 * 31.71 *	14.38 * 31.71 *	18.00 * 39.69 *	18.00 * 39.69 *	12.97 * 28.60 *	9.22 20.32	9.47 20.88	6.08 13.4			7.37 16.25	4.84 10.68	7.14 (23.42)
-4.5 m -15 ft	kg lb			14.12 * 31.14 *	14.12 * 31.14 *	10.41 * 22.96 *	9.48 20.9					7.61 * 16.77 *	6.61 14.58	5.80 (19.02)

- At the arm end, without bucket (Unit: 1,000 kg)
- Capacities marked with an asterisk (*) are limited by hydraulic capacity.
- Lift capacities shown do not exceed 75% of the minimum tipping load or 87% of hydraulic capacity.
- The least stable position is over the side.
- Lift capacities apply only to the machine as originally manufactured and normally equipped by the manufacturer.
- Lift capacities are in compliance with ISO 10567.
- Text color indicates lifting capacity type.
- Machine in "Power Boost" mode for lifting capacities.



Rating over-side or 360 degree Rating over-side or 360 degree

HX260L

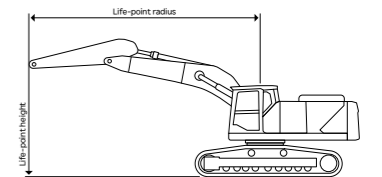
5.9 m (19' 4") boom, 3.5 m (9' 10") arm equipped with 4.7ton CTW and 800mm(2' 0") triple grouser shoe.

Lift-point height (m/ft)	Lift-point radius												At max. reach						
	1.5 m (5 ft)		3.0 m (10 ft)		4.5 m (15 ft)		6.0 m (20 ft)		7.5 m (25 ft)		9 m (30 ft)		Capacity		Reach				
															m (ft)				
7.5 m 25 ft	kg lb													4.71 * 10.39 *	4.71 * 10.39 *	7.21 (23.67)			
6.0 m 20 ft	kg lb										6.09 * 13.43 *	5.08 11.21		4.52 * 9.97 *	4.38 9.65	8.17 (26.80)			
4.5 m 15 ft	kg lb									6.98 * 15.39 *	6.98 * 15.39 *	6.44 * 14.19 *	4.99 10.99	4.52 * 9.97 *	3.84 8.47	8.76 (28.75)			
3.0 m 10 ft	kg lb							10.41 * 22.94 *	10.41 * 22.94 *	8.16 * 17.98 *	6.75 14.88	7.03 * 15.49 *	4.82 10.63	5.10 * 11.24 *	3.62 7.97	4.68 * 10.32 *	3.47 7.86	9.07 (29.77)	
1.5 m 5 ft	kg lb							12.68 * 27.95 *	9.7 21.39	9.34 * 20.59 *	6.41 14.13	7 15.43	4.65 10.25	5.31 11.71	3.54 7.81	5.00 * 11.03 *	3.57 7.64	9.12 (29.94)	
0.0 m 0.0 ft	kg lb							8.75 * 19.28 *	8.75 * 19.28 *	13.97 * 30.81 *	9.27 20.43	9.56 21.08	6.15 13.56	6.85 15.09	4.51 9.94		5.32 11.72	3.53 7.78	8.92 (29.28)
-1.5 m -5 ft	kg lb	8.33 * 18.37 *	8.33 * 18.37 *	12.86 * 28.34 *	12.86 * 28.34 *	14.20 * 31.31 *	9.11 20.08	9.42 20.76	6.02 13.28	6.77 14.92	4.44 9.78			5.72 12.61	3.78 8.33	8.45 (27.74)			
-3.0 m -10 ft	kg lb	13.02 * 28.70 *	13.02 * 28.70 *	18.76 * 41.35 *	18.22 40.17	13.46 * 29.67 *	9.14 20.15	9.42 20.76	6.02 13.28	6.8 14.99	4.47 9.85			6.61 14.57	4.35 9.59	7.66 (25.13)			
-4.5 m -15 ft	kg lb	19.07 * 42.05 *	19.07 * 42.05 *	15.95 * 35.16 *	15.95 * 35.16 *	11.49 * 25.33 *	9.35 20.61	8.40 * 18.51 *	6.18 13.62					7.51 * 16.56 *	5.65 12.46	6.43 (21.08)			

5.9 m (19' 4") boom, 3.0 m (9' 10") arm equipped with 5.5ton CTW and 600mm(2' 0") triple grouser shoe.

Lift-point height (m/ft)	Lift-point radius										At max. reach									
	1.5 m (5 ft)		3.0 m (10 ft)		4.5 m (15 ft)		6.0 m (20 ft)		7.5 m (25 ft)		Capacity		Reach							
													m (ft)							
7.5 m 25 ft	kg lb													5.26 * 11.61 *	5.26 * 11.61 *	6.66 (21.85)				
6.0 m 20 ft	kg lb											6.60 * 14.54 *	6.60 * 14.54 *			4.99 * 10.99 *	4.7 10.37	7.68 (25.21)		
4.5 m 15 ft	kg lb											6.75 * 14.87 *	6.75 * 14.87 *	5.91 * 13.04 *	4.9 10.81	4.95 * 10.92 *	4.08 9	8.32 (27.28)		
3.0 m 10 ft	kg lb											8.87 * 19.55 *	8.87 * 19.55 *	7.53 * 16.61 *	6.79 14.98	6.87 * 15.16 *	4.83 10.64	4.95 * 10.92 *	4.08 9	8.32 (27.28)
1.5 m 5 ft	kg lb											11.27 * 24.84 *	9.81 21.62	8.65 * 19.07 *	6.47 14.27	7.39 * 16.28 *	4.68 10.32	5.11 * 11.26 *	3.77 8.31	8.64 (28.35)
0.0 m 0.0 ft	kg lb											13.31 * 29.34 *	9.2 20.27	9.72 * 21.43 *	6.17 13.6	7.28 16.06	4.53 9.98	5.46 * 12.04 *	3.66 8.08	8.69 (28.52)
-1.5 m -5 ft	kg lb	8.67 * 19.11 *	8.67 * 19.11 *	13.13 * 28.95 *	13.13 * 28.95 *	14.09 * 31.07 *	8.81 19.42	9.86 21.75	5.88 12.97	7.12 15.69	4.37 9.64			6.53 14.4	4.04 8.91	7.98 (26.19)				
-3.0 m -10 ft	kg lb	14.38 * 31.71 *	14.38 * 31.71 *	18.00 * 39.69 *	17.28 38.1	12.97 * 28.60 *	8.89 19.6	9.73 * 21.45 *	5.92 13.06					7.69 * 16.96 *	4.74 10.44	7.14 (23.42)				
-4.5 m -15 ft	kg lb			14.12 * 31.14 *	14.12 * 31.14 *	10.41 * 22.96 *	9.14 20.16							7.61 * 16.77 *	6.44 14.2	5.80 (19.02)				

- At the arm end, without bucket (Unit: 1,000 kg)
- Capacities marked with an asterisk (*) are limited by hydraulic capacity.
- Lift capacities shown do not exceed 75% of the minimum tipping load or 87% of hydraulic capacity.
- The least stable position is over the side.
- Lift capacities apply only to the machine as originally manufactured and normally equipped by the manufacturer.
- Lift capacities are in compliance with ISO 10567.
- Text color indicates lifting capacity type.
- Machine in "Power Boost" mode for lifting capacities.



LIFTING CAPACITY

Rating over-side or 360 degree Rating over-side or 360 degree

HX260L

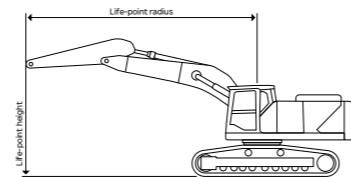
5.9 m (19' 4") boom, 3.0 m (9' 10") arm equipped with 5.5ton CTW and 800mm(2' 7") triple grouser shoe.

Lift-point height (m/ft)	Lift-point radius										At max. reach			
	1.5 m (5 ft)		3.0 m (10 ft)		4.5 m (15 ft)		6.0 m (20 ft)		7.5 m (25 ft)		Capacity		Reach	
													m (ft)	
7.5 m 25 ft	kg lb						6.60 * 14.54 *	6.60 * 14.54 *			5.26 * 11.61 *	5.26 * 11.61 *	6.66 (21.85)	
6.0 m 20 ft	kg lb						6.75 * 14.87 *	6.75 * 14.87 *	5.91 * 13.04 *	5.42 11.94	4.99 * 10.99 *	4.99 * 10.99 *	7.68 (25.21)	
4.5 m 15 ft	kg lb			8.87 * 19.55 *	8.87 * 19.55 *	7.53 * 16.61 *	7.51 16.57	6.87 * 15.16 *	5.34 11.77	4.95 * 10.92 *	4.52 9.97	4.52 9.97	8.32 (27.28)	
3.0 m 10 ft	kg lb			11.27 * 24.84 *	10.97 24.19	8.65 * 19.07 *	7.19 15.85	7.39 * 16.28 *	5.19 11.44	5.11 * 11.26 *	4.19 9.23	4.19 9.23	8.64 (28.35)	
1.5 m 5 ft	kg lb			13.31 * 29.34 *	10.34 22.8	9.72 * 21.43 *	6.88 15.16	7.47 16.47	5.03 11.1	5.46 * 12.04 *	4.08 8.99	4.08 8.99	8.69 (28.52)	
0.0 m 0.0 ft	kg lb			7.56 * 16.68 *	7.56 * 16.68 *	14.23 * 31.37 *	10.02 22.09	10.22 22.52	6.67 14.7	7.35 16.2	4.92 10.84	6.08 * 13.41 *	4.17 9.18	8.48 (27.83)
-1.5 m -5 ft	kg lb	8.67 * 19.11 *	8.67 * 19.11 *	13.13 * 28.95 *	13.13 * 28.95 *	14.09 * 31.07 *	9.94 21.92	10.12 22.31	6.58 14.51	7.3 16.1	4.88 10.76	6.7 14.78	4.51 9.93	7.98 (26.19)
-3.0 m -10 ft	kg lb	14.38 * 31.71 *	14.38 * 31.71 *	18.00 * 39.69 *	18.00 * 39.69 *	12.97 * 28.60 *	10.03 22.1	9.73 * 21.45 *	6.62 14.6			7.69 * 16.96 *	5.28 11.64	7.14 (23.42)
-4.5 m -15 ft	kg lb			14.12 * 31.14 *	14.12 * 31.14 *	10.41 * 22.96 *	10.29 22.68					7.61 * 16.77 *	7.19 15.84	5.80 (19.02)

5.9 m (19' 4") boom, 3.0 m (9' 10") arm equipped with 5.5ton CTW and 900mm(2' 11") triple grouser shoe.

Lift-point height (m/ft)	Lift-point radius										At max. reach			
	1.5 m (5 ft)		3.0 m (10 ft)		4.5 m (15 ft)		6.0 m (20 ft)		7.5 m (25 ft)		Capacity		Reach	
													m (ft)	
7.5 m 25 ft	kg lb						6.60 * 14.54 *	6.60 * 14.54 *			5.26 * 11.61 *	5.26 * 11.61 *	6.66 (21.85)	
6.0 m 20 ft	kg lb						6.75 * 14.87 *	6.75 * 14.87 *	5.91 * 13.04 *	5.46 12.04	4.99 * 10.99 *	4.99 * 10.99 *	7.68 (25.21)	
4.5 m 15 ft	kg lb			8.87 * 19.55 *	8.87 * 19.55 *	7.53 * 16.61 *	7.53 * 16.61 *	6.87 * 15.16 *	5.38 11.87	4.95 * 10.92 *	4.56 10.06	4.56 10.06	8.32 (27.28)	
3.0 m 10 ft	kg lb			11.27 * 24.84 *	11.06 24.39	8.65 * 19.07 *	7.25 15.98	7.39 * 16.28 *	5.23 11.54	5.11 * 11.26 *	4.23 9.32	4.23 9.32	8.64 (28.35)	
1.5 m 5 ft	kg lb			13.31 * 29.34 *	10.43 23	9.72 * 21.43 *	6.94 15.3	7.54 16.63	5.08 11.2	5.46 * 12.04 *	4.11 9.07	4.11 9.07	8.69 (28.52)	
0.0 m 0.0 ft	kg lb			7.56 * 16.68 *	7.56 * 16.68 *	14.23 * 31.37 *	10.11 22.29	10.31 22.74	6.73 14.83	7.42 16.35	4.96 10.94	6.08 * 13.41 *	4.2 9.27	8.48 (27.83)
-1.5 m -5 ft	kg lb	8.67 * 19.11 *	8.67 * 19.11 *	13.13 * 28.95 *	13.13 * 28.95 *	14.09 * 31.07 *	10.03 22.11	10.22 22.52	6.64 14.64	7.38 16.26	4.92 10.86	6.7 14.92	4.55 10.03	7.98 (26.19)
-3.0 m -10 ft	kg lb	14.38 * 31.71 *	14.38 * 31.71 *	18.00 * 39.69 *	18.00 * 39.69 *	12.97 * 28.60 *	10.12 22.3	9.73 * 21.45 *	6.68 14.74			7.69 * 16.96 *	5.33 11.75	7.14 (23.42)
-4.5 m -15 ft	kg lb			14.12 * 31.14 *	14.12 * 31.14 *	10.41 * 22.96 *	10.38 22.88					7.61 * 16.77 *	7.25 15.98	5.80 (19.02)

- At the arm end, without bucket (Unit: 1,000 kg)
- Capacities marked with an asterisk (*) are limited by hydraulic capacity.
- Lift capacities shown do not exceed 75% of the minimum tipping load or 87% of hydraulic capacity.
- The least stable position is over the side.
- Lift capacities apply only to the machine as originally manufactured and normally equipped by the manufacturer.
- Lift capacities are in compliance with ISO 10567.
- Text color indicates lifting capacity type.
- Machine in "Power Boost" mode for lifting capacities.



Rating over-side or 360 degree Rating over-side or 360 degree

HX260L

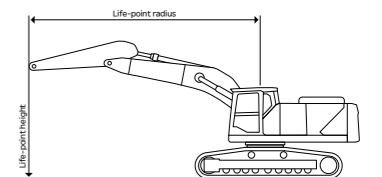
2PCS boom, 3.0 m (9' 10") arm equipped with 5.5ton CTW and 600mm(2' 0") triple grouser shoe.

Lift-point height (m/ft)	Lift-point radius										At max. reach				
	3.0 m (10 ft)		4.5 m (15 ft)		6.0 m (20 ft)		7.5 m (25 ft)		9 m (30 ft)		Capacity		Reach		
													m (ft)		
9 m 30 ft	kg lb						7.67 * 16.90 *	7.67 * 16.90 *					5.66 * 12.48 *	5.66 * 12.48 *	5.53 (18.14)
7.5 m 25 ft	kg lb								7.27 * 16.04 *	7.06 15.56			4.89 * 10.78 *	4.89 * 10.78 *	7.06 (23.17)
6.0 m 20 ft	kg lb			7.50 * 16.53 *	7.50 * 16.53 *	7.89 * 17.40 *	6.95 15.31	6.74 * 14.86 *	4.81 10.6			4.58 * 10.09 *	4.24 9.36	8.03 (26.36)	
4.5 m 15 ft	kg lb			11.31 * 24.94 *	10.37 22.86	8.99 * 19.83 *	6.66 14.68	7.03 * 15.50 *	4.7 10.36			4.49 * 9.90 *	3.7 8.16	8.64 (28.35)	
3.0 m 10 ft	kg lb			13.04 * 28.76 *	9.52 20.98	9.75 * 21.50 *	6.28 13.86	7.36 16.23	4.53 9.98			4.56 * 10.06 *	3.43 7.56	8.95 (29.37)	
1.5 m 5 ft	kg lb			13.98 * 30.82 *	8.85 19.51	10.05 22.15	5.95 13.11	7.17 15.81	4.35 9.6	4.84 * 10.67 *	3.34 7.37	4.79 * 10.56 *	3.34 7.36	9.00 (29.54)	
0.0 m 0.0 ft	kg lb			13.61 * 30.00 *	8.55 18.85	9.8 21.6	5.73 12.64	7.04 15.51	4.23 9.33			5.22 * 11.51 *	3.41 7.53	8.80 (28.87)	
-1.5 m -5 ft	kg lb	10.12 * 22.30 *	10.12 * 22.30 *	12.17 * 26.84 *	8.51 18.76	9.39 * 20.69 *	5.66 12.47	7 15.43	4.2 9.26			5.79 * 12.76 *	3.69 8.13	8.32 (27.31)	
-3.0 m -10 ft	kg lb			9.72 * 21.43 *	8.63 19.03	7.61 * 16.77 *	5.72 12.61	5.05 * 11.12 *	4.31 9.49			4.99 * 11.00 *	4.3 9.47	7.52 (24.67)	

5.9 m (19' 4") boom, 3.5 m (11' 6") arm equipped with 5.5ton CTW and 800mm(2' 7") triple grouser shoe.

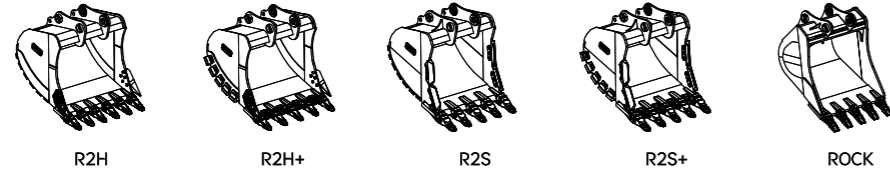
Lift-point height (m/ft)	Lift-point radius										At max. reach					
	1.5 m (5 ft)		3.0 m (10 ft)		4.5 m (15 ft)		6.0 m (20 ft)		7.5 m (25 ft)		9 m (30 ft)		Capacity		Reach	
														m (ft)		
7.5 m 25 ft	kg lb												4.71 * 10.39 *	4.71 * 10.39 *	7.21 (23.67)	
6.0 m 20 ft	kg lb								6.09 * 13.43 *	5.08 11.19			4.52 * 9.97 *	4.38 9.65	8.17 (26.80)	
4.5 m 15 ft	kg lb							6.98 * 15.39 *	6.98 * 15.39 *	6.44 * 14.19 *	4.98 10.98		4.52 * 9.97 *	3.85 8.49	8.76 (28.75)	
3.0 m 10 ft	kg lb					10.41 * 22.94 *	10.24 22.58	8.16 * 17.98 *	6.7 14.78	7.03 * 15.49 *	4.82 10.63	5.10 * 11.24 *	3.63 8	4.68 * 10.32 *	3.58 7.89	9.07 (29.77)
1.5 m 5 ft	kg lb					12.68 * 27.95 *	9.54 21.03	9.34 * 20.59 *	6.37 14.04	7.48 16.5	4.65 10.25	5.69 12.55	3.56 7.84	5.00 * 11.03 *	3.48 7.68	9.12 (29.94)
0.0 m 0.0 ft	kg lb			8.75 * 19.28 *	8.75 * 19.28 *	13.97 * 30.81 *	9.12 20.11	10.19 * 22.45 *	6.12 13.49	7.33 16.16	4.51 9.94			5.55 * 12.24 *	3.54 7.81	8.92 (29.28)
-1.5 m -5 ft	kg lb	8.33 * 18.37 *	8.33 * 18.37 *	12.86 * 28.34 *	12.86 * 28.34 *	14.20 * 31.31 *	10.08 19.77	10.08 22.22	5.99 13.21	7.25 15.98	4.44 9.78			6.13 13.51	3.79 8.36	8.45 (27.74)
-3.0 m -10 ft	kg lb	13.02 * 28.70 *	13.02 * 28.70 *	18.76 * 41.35 *	17.42 38.41	9 29.67 *	10.06 * 19.84	10.06 * 22.17 *	5.99 13.21	7.28 16.06	4.47 9.85			7.08 15.61	4.35 9.6	7.66 (25.13)
-4.5 m -15 ft	kg lb	19.07 * 42.05 *	19.07 * 42.05 *	15.95 * 35.16 *	15.95 * 35.16 *	9.2 25.33 *	8.40 * 20.28	8.40 * 18.51 *	6.14 13.54					7.51 * 16.56 *	5.63 12.41	6.43 (21.08)

- At the arm end, without bucket (Unit: 1,000 kg)
- Capacities marked with an asterisk (*) are limited by hydraulic capacity.
- Lift capacities shown do not exceed 75% of the minimum tipping load or 87% of hydraulic capacity.
- The least stable position is over the side.
- Lift capacities apply only to the machine as originally manufactured and normally equipped by the manufacturer.
- Lift capacities are in compliance with ISO 10567.
- Text color indicates lifting capacity type.
- Machine in "Power Boost" mode for lifting capacities.



BUCKET SELECTION GUIDE & DIGGING FORCE

HX260L



Type	Capacity m ³ (yd ³)		Width mm (in)	Weight kg (lb)	Tooth EA	Recommendation mm (ft-in)							
	SAE heaped	CECE heaped				5,900(19' 4") Boom			5,900 HD (19' 4") Boom		3,050+3,050(10' 0" + 10' 0") 2PCS Boom		
						2,500 (8' 2") Arm	3,000 (9' 10") Arm	3,500 (11' 6") Arm	3,000 HD (9' 10") Arm	2,500 (8' 2") Arm	3,000 (9' 10") Arm	3,500 (11' 6") Arm	
R1G	1.05 (1.37)	0.92 (1.20)	1,369 (53.9")	772 (1,700)	5	●	●	●	●	●	●	●	
R1G	1.17 (1.53)	1.00 (1.31)	1,490 (58.7")	830 (1,830)	6	●	●	●	●	●	●	●	
R1G	1.28 (1.67)	1.11 (1.45)	1,604 (63.1")	870 (1,920)	6	●	●	●	●	●	●	○	
R1G	1.40 (1.83)	1.22 (1.60)	1,659 (65.3")	990 (2,180)	6	●	●	○	●	●	○	■	
R2H	0.60 (0.78)	0.56 (0.73)	796 (31.3")	700 (1,540)	4	●	●	●	●	●	●	●	
R2H	1.08 (1.41)	0.97 (1.27)	1,246 (49.1")	924 (2,040)	5	●	●	●	●	●	●	●	
R2H	1.24 (1.62)	1.11 (1.45)	1,396 (55.0")	993 (2,190)	5	●	●	●	●	●	●	○	
R2H	1.35 (1.77)	1.20 (1.57)	1,498 (59.0")	1,056 (2,330)	6	●	●	○	●	●	○	■	
R2H	1.40 (1.83)	1.25 (1.63)	1,546 (60.9")	1,079 (2,380)	6	●	○	○	○	●	○	■	
R2H	1.51 (1.98)	1.34 (1.75)	1,646 (64.8")	1,125 (2,480)	5	●	○	■	○	○	■	■	
R2S	1.07 (1.40)	0.97 (1.27)	1,244 (49.0")	1,156 (2,550)	5	●	●	●	●	●	●	●	
R2S	1.23 (1.61)	1.11 (1.45)	1,394 (54.9")	1,238 (2,730)	5	●	●	○	●	●	○	■	
NA	1.20 (1.57)	1.07 (1.40)	1,121 (44.1")	1,084 (2,390)	5	●	●	●	●	●	●	○	
NA	1.41 (1.84)	1.25 (1.63)	1,273 (50.1")	1,181 (2,600)	6	●	○	■	○	○	■	■	

● : Applicable for materials with density of 2,100 kg/m³ (3,500 lb/yd³) or less
 ○ : Applicable for materials with density of 1,800 kg/m³ (3,000 lb/yd³) or less
 - : Not Recommended
 ■ : Applicable for materials with density of 1,500 kg/m³ (2,500 lb/yd³) or less
 ▲ : Applicable for materials with density of 1,200 kg/m³ (2,000 lb/yd³) or less

ATTACHMENT

Booms and arms are welded with a low-stress, full-box section design.
 6,200mm (20' 4"), 6,500mm (21' 4") Booms and 2,600 (8' 6"), 2,900 (9' 6"), 3,200 (10' 6"), 3,950 (12' 12") Arms are available.
 Hyundai Buckets are all-welded, high-strength steel implements.

DIGGING FORCE

Length	Boom mm (ft.in)	5,900 (19' 4")			3,050+3,050(10' 0" + 10' 0") 2PCS			Remark	
		2,500 (8' 2")	3,000 (9' 10")	3,500 (11' 6")	2,500 (8' 2")	3,000 (9' 10")	3,500 (11' 6")		
Bucket Digging Force	SAE	kN	R1G: 153.0 (165.8) NA: 141.7 (153.8)						Nominal (Boost)
		kgf	R1G: 15,600 (16,910) NA: 14,450 (15,680)						
		lbf	R1G: 34,400 (37,270) NA: 31,860 (34,580)						
	ISO	kN	R1G: 178.5 (194.2) NA: 156.7 (170.1)						
		kgf	R1G: 18,200 (19,800) NA: 15,980 (17,350)						
		lbf	R1G: 40,130 (43,660) NA: 35,230 (38,240)						
Arm Crowd Force	SAE	kN	149.1 (161.9)	123.6 (134.4)	113.8 (123.6)	149.1 (161.9)	123.6 (134.4)	113.8 (123.6)	
		kgf	15,210 (16,510)	12,600 (13,700)	11,600 (12,600)	15,210 (16,510)	12,600 (13,700)	11,600 (12,600)	
		lbf	33,520 (36,390)	27,790 (30,210)	25,580 (27,790)	33,520 (36,390)	27,790 (30,210)	25,580 (27,790)	
	ISO	kN	156.0 (168.7)	128.5 (139.3)	117.7 (128.5)	156.0 (168.7)	128.5 (139.3)	117.7 (128.5)	
		kgf	15,910 (17,210)	13,100 (14,200)	12,000 (13,100)	15,910 (17,210)	13,100 (14,200)	12,000 (13,100)	
		lbf	35,070 (37,930)	28,890 (31,320)	26,460 (28,890)	35,070 (37,930)	28,890 (31,320)	26,460 (28,890)	

Note : Boom weight includes arm cylinder, piping, and pin Arm weight includes bucket cylinder, linkage, and pin

STANDARD / OPTION

HYDRAULIC SYSTEM	STD
FULL ELECTRO HYDRAULIC (FEH)	
Variable Power Control	●
Electric Pump Flow Control	●
Electric MCV with Electric Joystick	●
Attachment Mode Flow Control	●
Engine Auto Idle	●
Engine Auto Shutdown Control	●
JOYSTICK STEERING	●
CAB & INTERIOR	STD
ISO STANDARD CABIN	
Additional 2 Working Lamp (HAL)	
Additional 2 Working Lamp (LED)	
Additional 6 Working Lamp (LED)	●
Cabin Upper and Lower Guard	
Cabin Lower Guard only	
Cabin Rain Shield	
Pantograph Wiper Arms	●
Radio / MP3 (Stereo)	
DAB Audio (Handsfree&Bluetooth)	
Electric Horn	●
Safety Glass - Tempered Glass	●
Safety Glass - Laminated Glass (front)	
Sliding Fold-In Front Window	●
Sliding Slide Window (LH)	●
Lockable Door	●
Hot & Cool Box	●
Storage Compartment	●
Comfort Package (Premium Seat included)	
Multi Channel Speaker (4 locations)	●
AUTOMATIC CLIMATE CONTROL	
Air Conditioner & Heater	●
Defroster	●
AUTOMATIC STARTING AID (AIR GRID HEATER) FOR WEATHER	
Starting Aid (Air Grid Heater) for Cold Weather	●
Engine Coolant Heater & Plug Heater (110V Plug Heater)	
Engine Coolant Heater & Plug Heater (220V Plug Heater)	
ADDITIONAL GAUGE PANEL (AGP)	
Primary 12" Display	●
Secondary 12" Display	●
Engine RPM or Trip Meter / Accel	●
Engine Coolant Temperature Gauge	●
Max Power / Low&High Speed / Engine Check indicator	●
Auto Idle	●
Overload Warning with alarm	●
Eco Gauge / Fuel Level / Hyd. Oil Temperature Gauge	●
Air Cleaner Clogging	●
Fuel Warmer	●
Warnings	●
Communication Error	●
Low Battery / Clock	●
SEAT	
Heated Seat	
Heated and Ventilated Seat	●
Premium Seat (Heated and Ventilated)	
CABIN FOG (ISO 1,0262) LEVEL 2	
FOG (Falling Object Guard)	Front & Top Guard Top Guard
CABIN ROPS (ISO) 12117-2	
ROPS (Roll Over Protective Structures)	●
SAFETY	STD
Battery Master Switcho	●
Right and Rear View Camera	●
Smart Around View Camera (SAVM)	
Travel Alarm	
Beacon Lamp	●
Automatic Swing Brake	●
Boom Holding Valve	●

SAFETY	STD
Arm Holding Valve	●
Overload Warning Device	●
NEW TECHNOLOGY	STD
Machine Guidance (MG)	
Machine Guidance (MG) with 2D MG Laser Receiver	
Machine Control (MC) + Weighing & LA	
: 2D MC and Bucket Weigh System with Lift Assist	
Machine Control (MC) + Weighing & ALA	
: Advanced Lift Assist (Pro)	
Equipment Health Monitoring (EHM) - Basic	
: Engine Oil & Hyd. Oil Status check as real time basis	
Equipment Health Monitoring (EHM) - Premium	
: Basic + Main Pump & Swing Device check included	
Auto Stop (Swing & Travel)	
: Emergency Collision Stop for Worker Safety	
Digital Key	
Intelligence Package	
: MG + MC + Weighing + ALA + SAVM + Auto Stop	
OTHERS	STD
Microphone	
Reversible Fan	
Breaker Filter	
Pre Cleaner - Oil washed	
Fine Swing	
Straight Travel	
Hi MATE (Telematics)	●
Air Compressor	
Auto Greasing System	
Sid Protector & Catwalk	
Fuel Filler Pump	
Heat Wire for mirror	
Shoe Case	
Alarm for all with White Noise	
Double-Acting Piping with Pedal	●
Rotating Piping (PERO)	
Quick Coupler	
Quick Coupler Piping	●
Tool Kit	
BOOMS	
5.9 m - Normal	●
5.9 m - Normal / HD(Heavy Duty)	
2-piece: 3.05 m + 3.05 m	
ARMS	
2.5m	
3.0m	
3.0m HD(Heavy Duty)	
3.0m Thumb Ready Arm (without lug)	●
3.5m	
3.5m Thumb Ready Arm (without lug)	
COUNTERWEIGHT	
4.7 ton (for mono-boom)	●
5.0 ton (for mono-boom)	
5.5 ton	
UNDERCARRIAGE	STD
TRACK FRAME TYPE	
Long & Fixed Track	
Narrow Track Gauge	
TRACK SHOES	
600 mm Shoe	
700 mm Shoe	
800 mm Shoe	●
900 mm Shoe	
TRACK GUARD	
Two Single Track Guard per Side	●

* Standard and optional equipment may vary. Contact your Hyundai dealer for more information.
 The machine may vary according to International standards.
 * The photos may include attachments and optional equipment that are not available in your area.
 * Materials and specifications are subject to change without advance notice.
 * All Imperial measurements rounded off to the nearest pound or inch.

MEMO

MEMO
