

# HX235A LCR

With EU Stage V Engine installed



\* Photo may include optional equipment.



Head Office(Sales Office)  
14F, GLOBAL R&D CENTER, 477 BUNDANG SUSEO-RO, BUNDANG-GU, SEONGNAM-SI, GYEONGGI-DO, 13553, KOREA

PLEASE CONTACT

**Gross Power**  
129 kW (173 HP) at 2,200 rpm

**Net Power**  
127 kW (170 HP) at 2,200 rpm

**Bucket Capacity**  
0.51 ~ 1.34 m<sup>3</sup>

**Operating Weight**  
24,000 kg / 52,910 lb

# WHAT'S NEWEST AND BEST

HX235A LCR

## THE BEST PRODUCTIVITY AND FUEL EFFICIENCY

- EU STAGE V Engine **NEW**
- Eco Report **NEW**
- Lifting Mode **NEW**
- EPFC System **NEW**
- Fuel Rate Information
- Eco Gauge
- Automatic Engine Shut Down

## ULTIMATE DURABILITY

- ROPS / FOG Cabin
- Reinforced Durability of Upper and Lower Structure and Attachments
- Durable Cooling Module
- High-grade (High-pressure) Hoses

## EASY CONTROL AND COMFORTABLE OPERATION

- Key On Init Work Mode **NEW**
- One Pedal Travel Straight **Option**
- Proportional Auxiliary Hydraulic System **Option**
- 2 Way Proportional RCV & Pedal Control Selection **Option**
- Fine (Cushion/Free) Swing Control **Option**
- Intelligent & Wide Cluster
- OME (Owner Menu Editing)
- Combination Speed

## THE ULTIMATE SAFE ENVIRONMENT

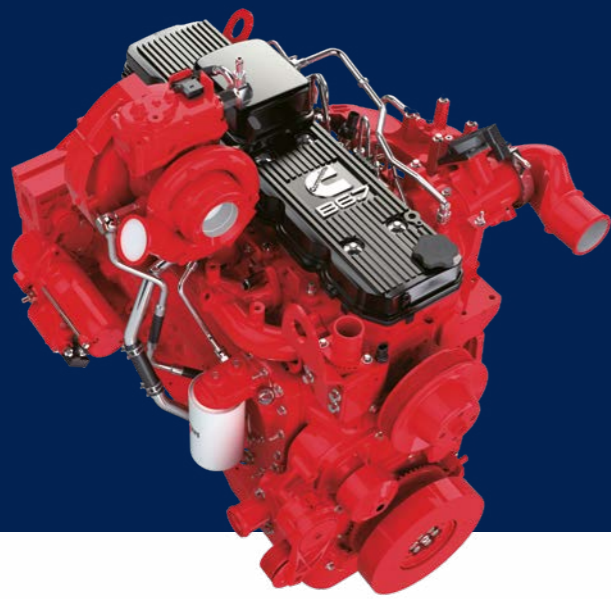
- Electronic Swing Parking Brake Control **NEW**
- Auto Safety Lock **NEW**
- AAVM **Option**
- Seatbelt Warning Alarm

## SERVICEABILITY AND TELEMATICS

- ECD(Engine Connected Diagnostics) **NEW**
- Hi MATE **Option**
- Urea Tank Cover **Upgrade**
- Mobile Fleet App.
- Connected Diagnostics



\* Photo may include optional equipment.

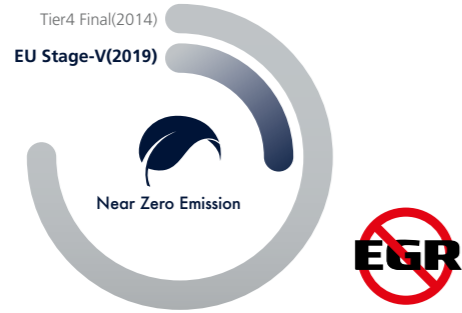


### EU STAGE V CERTIFIED ENGINE

Cummins B6.7 engine is satisfying the most strict environmental emission regulation in the world. (Reduction in PM 60%)

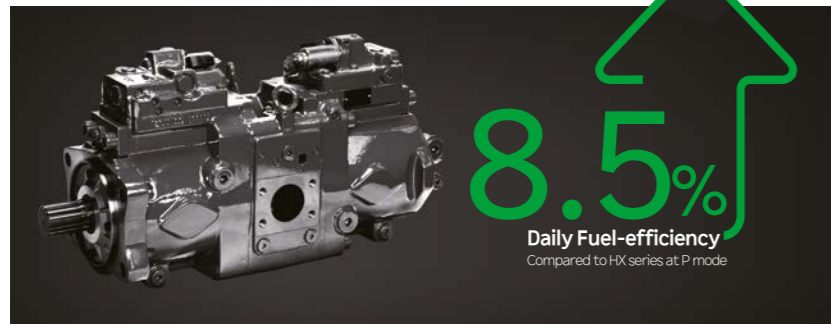
### EU STAGE V Engine NEW

Now in its fourth decade of continuous improvement, the B6.7 for 2019 features an EGR-free design that delivers 5 percent more power and 31 percent more peak torque than the current model. Increased fuel economy and longer maintenance intervals contribute to a reduced cost of operation.



### EPFC System(Electric Positive Flow Control) NEW

The advanced hydraulic system and controls based on electric positive flow control system achieve the lowest fuel consumption and improved fine control. Pump power is precisely variable controlled through recognition of lever manipulation amount and specific complex operations.



### Lifting Mode NEW

This work mode improves fine operability and lift capability through RPM reduction, power boost activation and pump flow control.

## ENVIRONMENTALLY FRIENDLY FUEL EFFICIENCY

### Eco Report NEW

It reports the excavator's inefficient operation status and help improving operator's working habit.



### Fuel Rate Information

Fuel information is displayed as average rate and latest fuel consumed for guiding to economy operating.



### Eco Gauge

Gauge level changes in accordance with engine working load and color indicates fuel saving-operation status.



### Automatic Engine Shutdown

Adjustable 'Automatic Engine Shutdown' significantly reduces idle time, overall operating hours and fuel consumption.



# THE BEST PRODUCTIVITY AND FUEL EFFICIENCY

HX A Series is equipped with eco-friendly, high-performance engines that meet the EU Stage V emission requirements.



MORE FUEL-EFFICIENCY  
(Compared to HX Series at P mode)



\*Photo may include optional equipment.



# ULTIMATE DURABILITY

The true value of HX A Series lies in its durability and high productivity. The robust upper and lower frame structure can endure external shock and heavy work loads. Attachment performance has been proven through rigorous field testing. No matter how tough the working environment is, you can always rely on the HYUNDAI Excavator A Series.



\* Photo may include optional equipment.



We make the best performance in rough working conditions without any unsureness with trustworthy HX235A LCR.

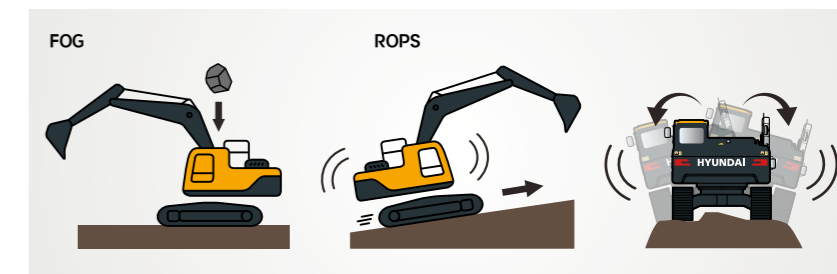


HX A Series is equipment with eco-friendly, high-performance engines that meet the EU Stage V emission requirement. Become a true leader on the ground with HX A Series.

### ✓ ROPS / FOG Cabin

The cabin structure of Hyundai HX A Series is using integrally welded low-stress, high strength steel to meet ROPS and FOG certification.

- ROPS : Roll-Over Protective Structures ISO12117-2
- FOG : Falling Object Guard, ISO10262 Level2



### ✓ Reinforced Durability of Upper and Lower Structure and Attachments

The upper and lower structure and attachments of HX A Series have higher durability than demanded on the site, as proven through numerous tests including road tests and virtual simulation. The wear resistance of the bucket has been improved by use of new material.



### Durable Cooling Module

HX A Series has a durable cooling module that passed stringent tests, demonstrating the highest productivity in tough working environments.

### Hi-grade (High-pressure) Hoses

The HX A Series uses high-pressure hoses with improved heat and pressure resistance, greatly increasing the durability of the equipment.



# EASY CONTROL AND COMFORTABLE OPERATION

Many electronic functions are concentrated in the most convenient spot for operators to improve work efficiency. The highly-advanced infotainment system, a product of HCE's intensive information technology development, enables both productivity and comfort while working! HX A Series is designed with the operator in mind.

\* Photo may include optional equipment.

## Intelligent & Wide Cluster

The 8" capacitive-type display (like smartphone display) of HX A Series is delivering excellent legibility. The centralized switches on the display allow convenience of checking the urea level and temperature outside the cabin.

## Front Side Air-Vent



## One Pedal Travel Straight Option

One Pedal Travel Straight is available for customers' convenience when long distance traveling or combination of attachment work with traveling is necessary.



## Proportional Auxiliary Hydraulic System Option

Proportional control switch with better speed control helps operators to enlarge the operation convenience whenever they do time-consuming work. And this function can be switched with pedal valve in cluster setting menu. Newly added detent function allows an operator to continue using 2 way piping flow even if the operator does not keep pressing proportional control switch.

## Key On Init Work Mode NEW

Operator can maintain previously set about attachment mode when starting.

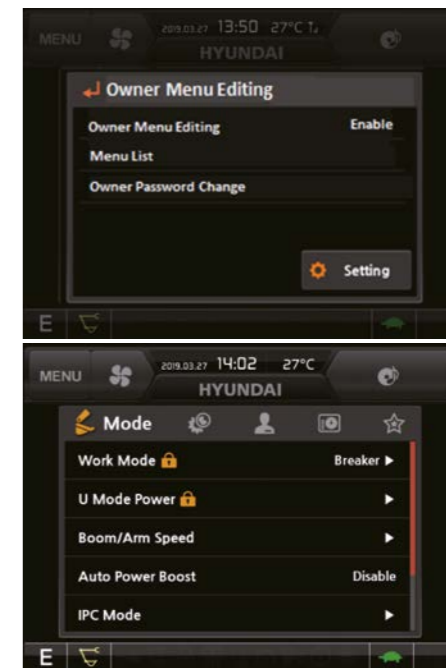


## Fine Swing Control Option

This option enables smooth movement at the start and stop of swing operation (Cushion Swing). In addition, it reduces the shaking of the weight when lifting operation (Free Swing).

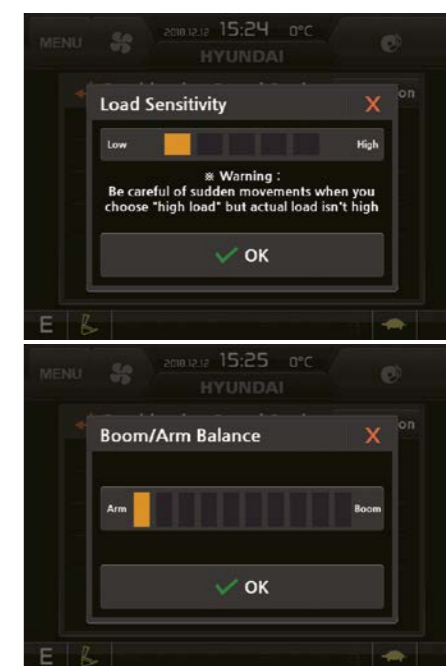
## OME (Owner Menu Editing)

The Owner of machine can restrict operators access the set of functions. In the menu, Owner can set the list of the function to lock or unlock it. It is necessary to input the password to access the set of function.



## Combination Speed

Operator can set load sensitivity level, boom priority level against arm and swing. Load sensitivity is controlled by 5 levels of initial flow rate for boom-up and arm in operation according to attachment weight. Boom priority against arm and swing can be set 10 levels of boom priority against arm and swing.





## HX235A LCR with advanced technology ensures our safety on a construction site.

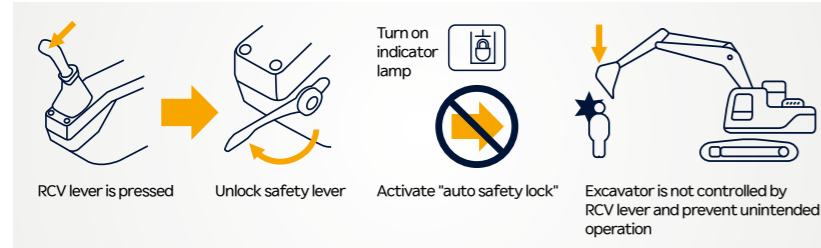
HX A Series excavators are products of HCE's spirit of initiative, creativity, and strong drive. HCE engineers, who are the best in the industry, have worked tirelessly to offer a zero-defect product. The new HX A Series reflects customers' needs in the field gleaned by thorough monitoring.

### Electronic Swing Parking System **NEW**

An electronic valve and control system is applied to improve safety and utilization. The opening and closing time of the swing brake valve is controlled according to the sensing and control system.

### Auto Safety Lock **NEW**

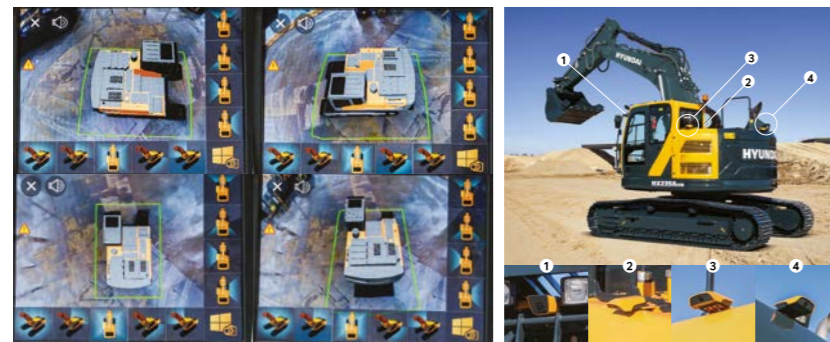
It prevents unintended operation. If operator unlock safety lever when RCV lever is pressed, excavator is not controlled by RCV lever.



### AAVM(Advanced Around View Monitoring) Camera System **Option**

HX A Series has a state-of-the-art AAVM video camera system to secure field of vision for operators in all directions, thereby preventing accidents. Operators can easily check the workplace in the front and rear and to the right and left.

- **AAVM**(Advanced Around View Monitoring) : Secure field of vision in all directions by nine views including 3D bird's eye view and 2D/4CH view.
- **IMOD**(Intelligent Moving Object Detection) : Inform when people or dangerous objects are detected within the range of operation(recognition distance : 5 m).



### Seatbelt Warning Alarm

If the seatbelt is not buckled when the ignition key is turned, an alarm is triggered in intervals along with a continuous visual alert. This emphasises our priority for operator safety.



Please make sure that your seat belt is fastened.  
Always use your seat belt when operating the machine.

OK



# THE ULTIMATE SAFE ENVIRONMENT

The true value of HX A Series lies in its durability.

The robust frame structure and the attachments show the real value of HX A Series in tough working environments and promise higher productivity.

\* Photo may include optional equipment.





# SERVICEABILITY AND TELEMATICS

IoT / ICT / AI-based digital technology.  
Creating a smart construction site. Maximizes connectivity, productivity, and safety for successful businesses.



## Hi MATE

Option

### IT'S CONVENIENT, EASY AND VALUABLE

Hi MATE Hyundai's newly developed remote management system, utilizes GPS-satellite technology to provide customers with the highest level of service and product support available. Hi MATE enables users to remotely evaluate machine performance, access diagnostic information, and verify machine locations at the touch of a button.

### WHAT IS BENEFITS



#### Increase Productivity

It helps you operate machines in efficient. You can check the difference between total engine hours and actual working hours. See how productive your machines are and plan any required cost saving solutions. Hi MATE offers working information such as working / idling hours, fuel consumption and rate.



#### Convenient and Easy Monitoring

There is nothing much to do to monitor your machines. Just log on to the Hi MATE website or mobile application. Hi MATE allows you to watch your machines whenever and wherever you are.

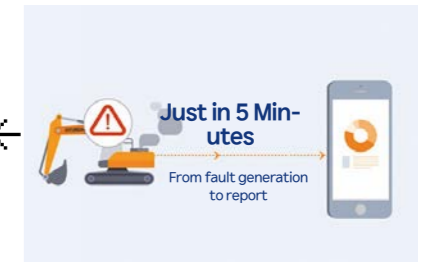
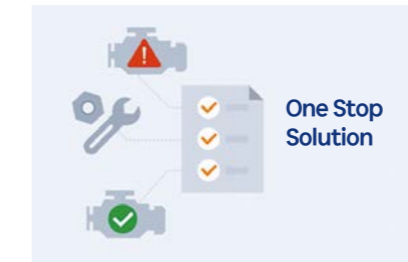


#### Security

Protect your machines from theft or unauthorized usage with Hi MATE. If the machine moves out of the Geofence boundary, you will get alerts.

### ▼ ECD(Engine Connected Diagnostics) **NEW**

It supports service technician with remote diagnostics report and ensure it arrive on site with proper tools after preparing in advance.



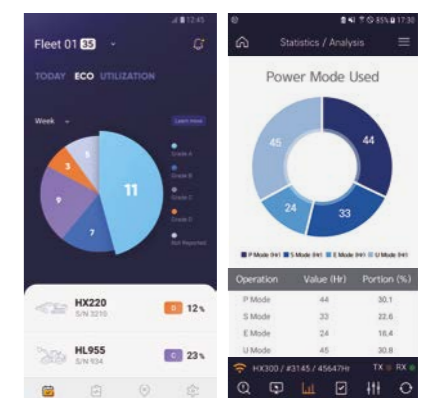
### ▼ Urea Tank Cover **Upgrade**

Urea Tank Cover with full open type help operator fill urea into the tank directly and more conveniently.



### ▼ Mobile Fleet App.

The new Mobile App is optimized to fleet management. It provides productivity, health insights based on telematics technology and enables fleet owner just focus on most wanted equipment in view of economical usage, utilization, fault codes and maintenance. The new Mobile App sorts equipment in order of eco-index, utilization-index and fault code level automatically so that urgent equipment pops up automatically.



Hi MATE Fleet App

HCE-DT AIR App

### Connected Diagnostics

HCE-DT Air connect you and your equipment wirelessly via smartphone and laptop right on site. You can diagnose root causes and troubleshoot for fault codes through the connection. Engine connected diagnostics is a kind of cooperated remote diagnostics service between Cummins cloud and Hi MATE cloud. It enables you get engine diagnostics report by cloud based fault code analysis in real-time and prepare parts, tools necessary in advance. It will help increase first visit fix rates.

# HX235A LCR SPECIFICATIONS

ENGINE	
Maker / Model	CUMMINS / B6.7
Type	6 cylinder, water cooled, 4-cycle, turbocharged charge air cooled, direct injection, electronic controlled diesel engine
Gross Power	129 kW (173 HP) at 2,200 rpm
Net Power	127 kW (170 HP) at 2,200 rpm
Max. Power	145 kW (195 HP) at 2,000 rpm
Peak Torque	881 N·m (650 lb·ft) at 1,300 rpm
Displacement	6.7 l (409cu in)

HYDRAULIC SYSTEM	
<b>MAIN PUMP</b>	
Type	Variable displacement tandem axis piston pumps
Max. flow	2 x 221 lpm (2 x 58.4 Us gpm / 2 x 48.6 UK gpm)
Sub-pump for pilot circuit	Gear pump
Capacity	2 x 130cc / rev
Rated oil flow	2 x 221 l / min (58.4 U.S. gpm / 48.6 U.K. gpm)
Rated speed	1,700 rpm

Cross-sensing and fuel saving pump system.

HYDRAULIC MOTORS	
Travel	Two speed axial pistons motor with brake valve and parking brake
Swing	Axial piston motor with automatic brake

RELIEF VALVE SETTING	
Implement circuits	350 kgf/cm <sup>2</sup> (4,980 psi)
Travel	350 kgf/cm <sup>2</sup> (4,980 psi)
Power boost (boom, arm, bucket)	380 kgf/cm <sup>2</sup> (5,410 psi)
Swing circuit	285 kgf/cm <sup>2</sup> (4,050 psi)
Pilot circuit	40 kgf/cm <sup>2</sup> (570 psi)
Service valve	Installed

HYDRAULIC CYLINDERS		
No. of cylinder bore X stroke	Boom	2-120 X 1,290 mm
	Arm	1-140 X 1,443 mm
	Arm(2PCS)	1-140 X 1,450 mm
	Bucket	1-120 X 1,060 mm
	Blade	2-130 X 240 mm
	2-Piece Boom	1st
2nd		1-150 X 1,300 mm

\* Hyundai Bio Hydraulic Oil (HBHO) available

DRIVES & BRAKES	
Drive method	Fully hydrostatic type
Drive motor	Axial piston motor, in-shoe design
Reduction system	Planetary reduction gear
Max. drawbar pull	22,200kgf (48,943 lbf)
Max. travel speed (high / low)	5.6 km/hr (3.5mph) / 3.2 km/hr (2mph)
Gradeability	35° (70%)
Parking brake	Multi wet disc

CONTROL	
Pilot pressure operated joysticks and pedals with detachable lever provide almost effortless and fatigueless operation.	
Pilot control	Two joysticks with one safety lever (LH): Swing and arm, (RH): Boom and bucket (ISO)
Traveling and steering	Two levers with pedals
Engine throttle	Electric, Dial type

SWING SYSTEM	
Swing motor	Fixed displacement axial piston motor
Swing reduction	Planetary gear reduction
Swing bearing lubrication	Grease-bathed
Swing brake	Multi wet disc
Swing speed	11.3 rpm

SERVICE CAPACITIES			
	liter	US gal	UK gal
Fuel tank	320.0	84.5	70.4
Engine coolant	30	7.9	8.8
Engine oil	23.7	6.3	5.1
Swing device	7.0	1.8	1.5
Final drive (each)	6.0	1.6	10.5
DEF / AdBlue R tank	48.0	12.6	10.5
Hydraulic system (including tank)	330.0	87.2	72.6
Hydraulic tank	160.0	42.3	35.2

UNDERCARRIAGE	
The X-leg type center frame is integrally welded with reinforced box-section track frames. The undercarriage includes lubricated rollers, idlers, track adjusters with shock absorbing springs and sprockets, and a track chain with double or triple grouser shoes.	
Center frame	X - leg type
Track frame	Pentagonal box type
No. of shoes on each side	49 EA
No. of carrier roller on each side	2 EA
No. of track roller on each side	8 EA
No. of rail guard on each side	2 EA

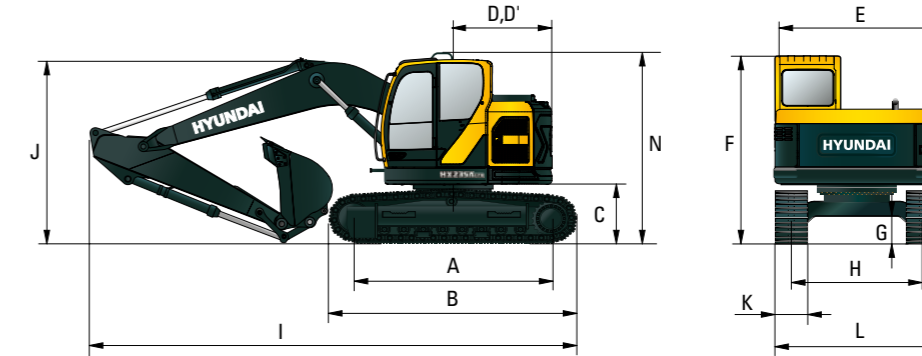
OPERATING WEIGHT (APPROXIMATE)	
Operating weight, including 5,700 mm (18' 8") boom, 2,900 mm (9' 6") arm, SAE heaped 0.92 m <sup>3</sup> (1.2 yd <sup>3</sup> ) bucket, lubricant, coolant, full fuel tank, full hydraulic tank, and all standard equipments.	

OPERATING WEIGHT			
Shoes		Operating weight	Ground pressure
Type	Width mm (in)	kg (lb)	kgf / cm <sup>2</sup> (psi)
Triple grouser	600 (24")	24,000 (52,910)	0.51 (7.27)
	700 (28")	24,280 (53,530)	0.44 (6.30)
	800 (32")	24,560 (54,140)	0.39 (5.58)

AIR CONDITIONING SYSTEM	
The air condition system for the machine contains the fluorinated greenhouse gas with global warming potential of R134a. (Global Warming Potential : 1430)	
The system hold 0.75kg refrigerant consisting of a CO <sub>2</sub> equivalent 1.07kg metric tonne. For more information, Please refer to the manual.	

# HX235A LCR DIMENSIONS & WORKING RANGE

HX235A LCR MONO BOOM DIMENSIONS	
5.70 m (18' 8") BOOM and 2.0 m (6' 7"), 2.4 m (7' 10"), 2.90 m (9' 6") ARM	



Unit : mm (ft. - in)

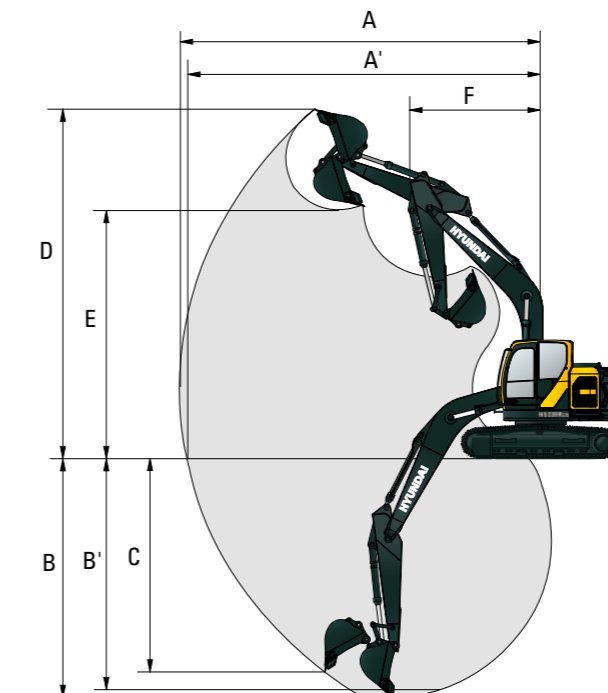
A	Tumbler distance	3,650 (12' 0")
B	Overall length of crawler	4,443 (14' 7")
*C	Ground clearance of counterweight	1,115 (3' 8")
D	Tail swing radius	1,780 (5' 10")
D'	Rear-end length	1,780 (5' 10")
E	Overall width of upperstructure	2,980 (9' 9")
*F	Overall height of cab	3,035 (9' 11")
*G	Min. ground clearance	475 (1' 7")
H	Track gauge	2,390 (7' 10")
*N	Overall height of guardrail	3,245 (10' 8")

\* This figure includes the size of grousers.

Boom length		5,700 (18' 8")		
Arm length		2,000 (6' 7")	2,400 (7' 10")	2,900 (9' 6")
I	Overall length	8,975 (29' 5")	8,935 (29' 4")	8,910 (29' 3")
*J	Overall height of boom	3,135 (10' 3")	3,055 (10' 0")	2,975 (9' 9")
K	Track shoe width	600 (24")	700 (28")	800 (32")
L	Overall width	2,990 (9' 10")	3,090 (10' 2")	3,190 (10' 6")

HX235A LCR MONO BOOM WORKING RANGE	
------------------------------------	--

Unit : mm (ft. - in)

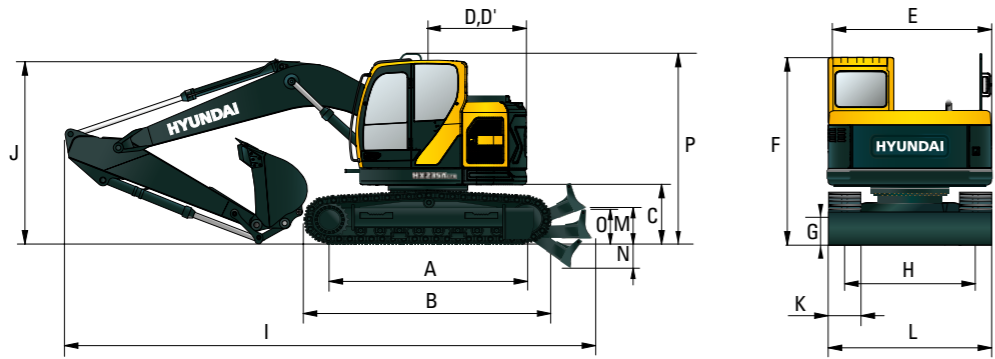


Boom length		5,700 (18' 8")		
Arm length		2,000 (6' 7")	2,400 (7' 10")	2,900 (9' 6")
A	Max. digging reach	9,070 (29' 9")	9,455 (31' 0")	9,880 (32' 5")
A'	Max. digging reach on ground	8,890 (29' 2")	9,280 (30' 5")	9,710 (31' 10")
B	Max. digging depth	5,480 (18' 0")	5,880 (19' 3")	6,380 (20' 11")
B'	Max. digging depth (8' level)	5,255 (17' 3")	5,680 (18' 8")	6,210 (20' 4")
C	Max. vertical wall digging depth	4,950 (16' 3")	5,320 (17' 5")	5,840 (19' 2")
D	Max. digging height	10,345 (33' 11")	10,670 (35' 0")	10,940 (35' 11")
E	Max. dumping height	7,440 (24' 5")	7,760 (25' 6")	8,045 (26' 5")
F	Min. swing radius	2,750 (9' 0")	2,480 (8' 2")	2,290 (7' 6")

# DIMENSIONS & WORKING RANGE

## HX235A LCR MONO BOOM (DOZER TYPE) DIMENSIONS

5.70 m (18' 8") BOOM and 2.0 m (6' 7"), 2.4 m (7' 10"), 2.9 m (9' 6") ARM



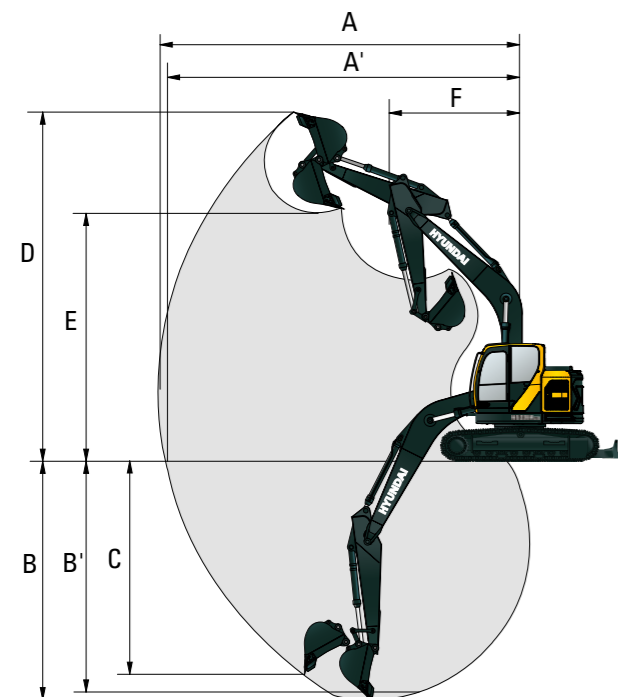
Unit : mm (ft.-in)

A	Tumbler distance	3,650 (12' 0")
*B	Overall length of crawler	4,443 (14' 7")
*C	Ground clearance of counterweight	1,115 (3' 8")
D	Tail swing radius	1,780 (5' 10")
D'	Rear-end length	1,780 (5' 10")
E	Overall width of upperstructure	2,980 (9' 9")
*F	Overall height of cab	3,035 (9' 11")
*G	Min. ground clearance	420 (1' 5")
H	Track gauge	2,390 (7' 10")
M	Ground clearance of blade up	545 (1' 9")
*N	Depth of blade down	360 (1' 2")
O	Height of blade	690 (2' 3")
P	Overall height of guardrail	3,245 (10' 8")

Boom length	5,700 (18' 8")		
Arm length	2,000 (6' 7")	2,400 (7' 10")	2,900 (9' 6")
I Overall length	9,925 (32' 7")	9,880 (32' 5")	9,855 (32' 4")
*J Overall height of boom	3,135 (10' 3")	3,135 (10' 0")	2,975 (9' 9")
K Track shoe width	600 (24")	700 (28")	800 (32")
L Overall width	2,990 (9' 10")	3,090 (10' 2")	3,190 (10' 6")

\* This figure includes the size of grouser.

## HX235A LCR MONO BOOM (DOZER TYPE) WORKING RANGE

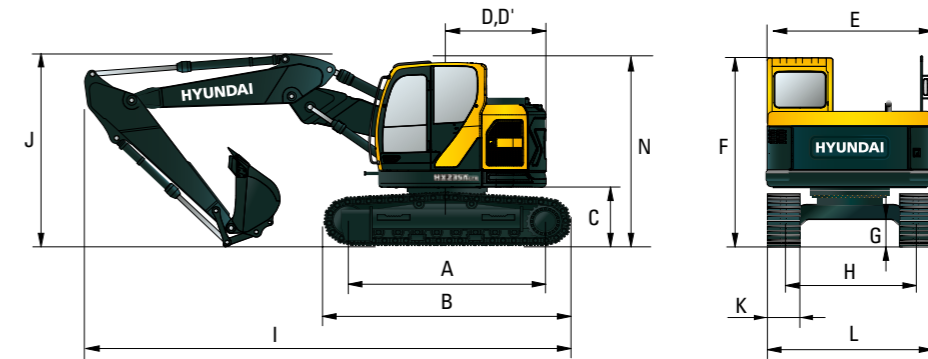


Unit : mm (ft.-in)

Boom length	5,700 (18' 8")		
Arm length	2,000 (6' 7")	2,400 (7' 10")	2,900 (9' 6")
A Max. digging reach	9,070 (29' 9")	9,455 (31' 0")	9,880 (32' 5")
A' Max. digging reach on ground	8,890 (29' 2")	9,280 (30' 5")	9,710 (31' 10")
B Max. digging depth	5,480 (18' 0")	5,880 (19' 3")	6,380 (20' 11")
B' Max. digging depth (8' level)	5,255 (17' 3")	5,680 (18' 8")	6,210 (20' 4")
C Max. vertical wall digging depth	4,950 (16' 3")	5,320 (17' 5")	5,840 (19' 2")
D Max. digging height	10,345 (33' 11")	10,670 (35' 0")	10,940 (35' 11")
E Max. dumping height	7,440 (24' 5")	7,760 (25' 6")	8,045 (26' 5")
F Min. swing radius	2,750 (9' 0")	2,480 (8' 2")	2,290 (7' 6")

## HX235A LCR 2-PIECE BOOM DIMENSIONS

5.87 m (19' 3") 2-Piece Boom and 2.0 m (6' 7"), 2.4 m (7' 10"), 2.9 m (9' 6") Arm



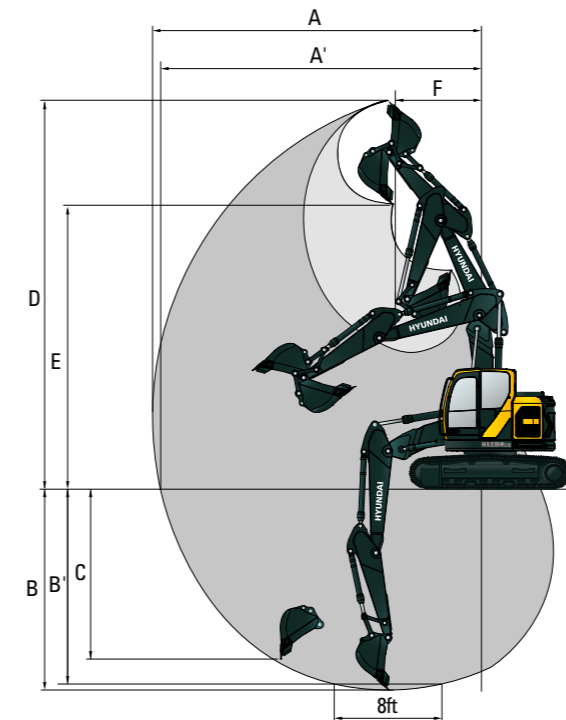
Unit : mm (ft.-in)

A	Tumbler distance	3,650 (12' 0")
B	Overall length of crawler	4,443 (14' 7")
*C	Ground clearance of counterweight	1,115 (3' 8")
D	Tail swing radius	1,780 (5' 10")
D'	Rear-end length	1,780 (5' 10")
E	Overall width of upperstructure	2,980 (9' 9")
*F	Overall height of cab	3,035 (9' 11")
*G	Min. ground clearance	475 (1' 7")
H	Track gauge	2,390 (7' 10")
*N	Overall height of guardrail	3,245 (10' 8")

Boom length	5,870 (19' 3")		
Arm length	2,000 (6' 7")	2,400 (7' 10")	2,900 (9' 6")
I Overall length	9,115 (29' 11")	9,090 (29' 10")	9,080 (29' 9")
*J Overall height of boom	3,005 (9' 10")	2,995 (9' 10")	3,000 (9' 10")
K Track shoe width	600 (24")	700 (28")	800 (32")
L Overall width	2,990 (9' 10")	3,090 (10' 2")	3,190 (10' 6")

\* This figure includes the size of grouser.

## HX235A LCR 2-PIECE BOOM WORKING RANGE



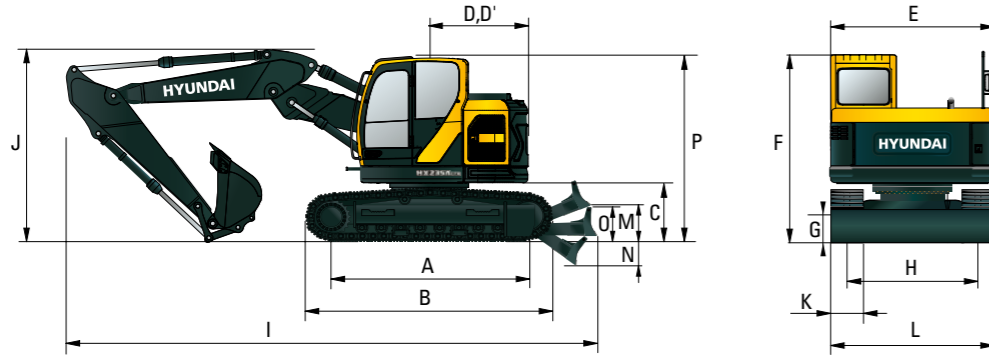
Unit : mm (ft.-in)

Boom length	5,870 (19' 3")		
Arm length	2,000 (6' 7")	2,400 (7' 10")	2,900 (9' 6")
A Max. digging reach	9,310 (30' 7")	9,705 (31' 10")	10,215 (33' 6")
A' Max. digging reach on ground	9,135 (30' 0")	9,535 (31' 3")	10,055 (33' 0")
B Max. digging depth	5,490 (18' 0")	5,895 (19' 4")	6,410 (21' 0")
B' Max. digging depth (8' level)	5,370 (17' 6")	5,780 (19' 0")	6,305 (20' 8")
C Max. vertical wall digging depth	3,305 (10' 10")	3,585 (11' 9")	4,160 (13' 8")
D Max. digging height	10,855 (35' 7")	11,225 (36' 10")	11,430 (37' 6")
E Max. dumping height	7,930 (26' 0")	8,300 (27' 3")	8,500 (27' 11")
F Min. swing radius	2,425 (7' 11")	2,330 (7' 8")	2,610 (8' 7")

# DIMENSIONS & WORKING RANGE

## HX235A LCR 2-PIECE BOOM (DOZER TYPE) DIMENSIONS

5.87 m (18' 6") 2-Piece Boom and 2.0 m (6' 7"), 2.4 m (7' 10"), 2.9 m (9' 6") Arm



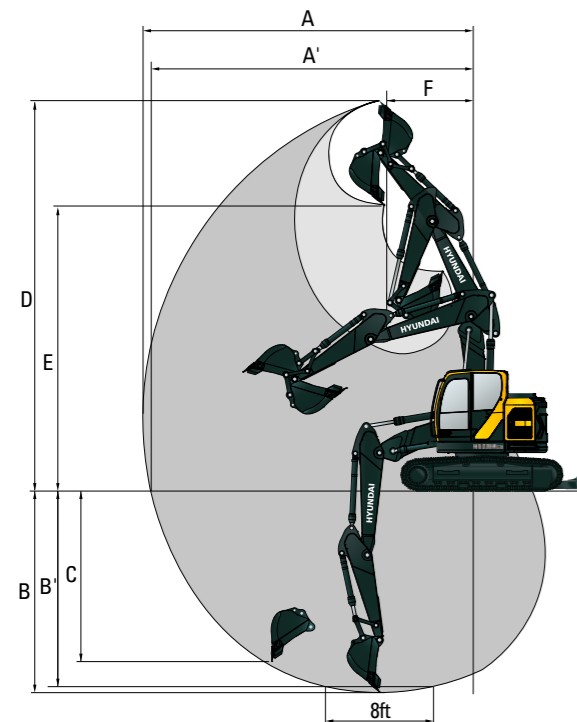
Unit : mm (ft.-in)

A	Tumbler distance	3,650 (12' 0")
*B	Overall length of crawler	4,443 (14' 7")
*C	Ground clearance of counterweight	1,115 (3' 8")
D	Tail swing radius	1,780 (5' 10")
D'	Rear-end length	1,780 (5' 10")
E	Overall width of upperstructure	2,980 (9' 9")
*F	Overall height of cab	3,035 (9' 11")
*G	Min. ground clearance	420 (1' 5")
H	Track gauge	2,390 (7" 10")
M	Ground clearance of blade up	545 (1' 9")
*N	Depth of blade down	360 (1' 2")
O	Height of blade	690 (2' 3")
P	Overall height of guardrail	3,245 (10' 8")

Boom length	5,870 (19' 3") 2-Piece		
Arm length	2,000 (6' 7")	2,400 (7' 10")	2,900 (9' 6")
I Overall length	10,065 (33' 0")	10,035 (32' 11")	10,025 (32' 11")
*J Overall height of boom	3,005 (9' 10")	2,995 (9' 10")	3,000 (9' 10")
K Track shoe width	600 (24")	700 (28")	800 (32")
L Overall width	2,990 (9' 10")	3,090 (10' 2")	3,190 (10' 6")

\* This figure includes the size of grousers.

## HX235A LCR 2-PIECE BOOM (DOZER TYPE) WORKING RANGE



Unit : mm (ft.-in)

Boom length	5,870 (19' 3") 2-Piece		
Arm length	2,000 (6' 7")	2,400 (7' 10")	2,900 (9' 6")
A Max. digging reach	9,310 (30' 7")	9,705 (31' 10")	10,215 (33' 6")
A' Max. digging reach on ground	9,135 (30' 0")	9,535 (31' 3")	10,055 (33' 0")
B Max. digging depth	5,490 (18' 0")	5,895 (19' 4")	6,410 (21' 0")
B' Max. digging depth (8' level)	5,370 (17' 7")	5,780 (19' 0")	6,305 (20' 8")
C Max. vertical wall digging depth	3,305 (10' 10")	3,585 (11' 9")	4,160 (13' 8")
D Max. digging height	10,855 (35' 7")	11,225 (36' 10")	11,430 (37' 6")
E Max. dumping height	7,930 (26' 0")	8,300 (27' 3")	8,500 (27' 11")
F Min. swing radius	2,425 (7' 11")	2,330 (7' 8")	2,610 (8' 7")

# LIFTING CAPACITY

Rating over-front Rating over-side or 360 degree

## HX235A LCR MONO BOOM

Boom : 5.70 m (18' 8") / Arm 2.0 m (6' 7") triple grouser / Without Dozer

Lift point height (m / ft)	Lift radius								At max. reach Capacity		Reach m (ft)
	3.0 m (9.8 ft)		4.5 m (14.8 ft)		6.0 m (19.7 ft)		7.5 m (24.6 ft)		Capacity	Reach	
7.5m kg			*6,470	*6,470					*6,420	*6,420	4.98
24.6ft lb			*14,260	*14,260					*14,150	*14,150	(16.3)
6.0m kg	*8,080	*8,080	*6,570	*6,570	*5,880	4,990			*5,830	4,570	6.32
19.7ft lb	*17,810	*17,810	*14,480	*14,480	*12,960	11,000			*12,850	10,080	(20.7)
4.5m kg			*7,520	*7,520	*6,120	4,870			*5,610	3,730	7.10
14.8ft lb			*16,580	*16,580	*13,490	10,740			*12,370	8,220	(23.3)
3.0m kg			*8,790	7,020	*6,610	4,660	5,410	3,360	*5,390	3,350	7.51
9.8ft lb			*19,380	15,480	*14,570	10,270	11,930	7,410	11,880	7,390	(24.6)
1.5m kg					*6,980	4,470	5,330	3,280	*5,220	3,220	7.60
4.9ft lb					*15,390	9,850	11,750	7,230	11,510	7,100	(24.9)
0.0m kg			*9,310	6,490	*6,970	4,360			5,400	3,310	7.39
0.0ft lb			*20,530	14,310	*15,370	9,610			11,900	7,300	(24.2)
-1.5m kg			*8,420	6,510	*6,390	4,350			*5,260	3,680	6.84
-4.9ft lb			*18,560	14,350	*14,090	9,590			*11,600	8,110	(22.5)
-3.0m kg	*8,160	*8,160	*6,710	6,650					*4,810	4,610	5.87
-9.8ft lb	*17,990	*17,990	*14,790	14,660					*10,600	10,160	(19.3)

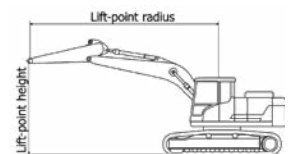
Boom : 5.70 m (18' 8") / Arm 2.0 m (6' 7") triple grouser / Dozer Up

Lift point height (m / ft)	Lift radius								At max. reach Capacity		Reach m (ft)
	3.0 m (9.8 ft)		4.5 m (14.8 ft)		6.0 m (19.7 ft)		7.5 m (24.6 ft)		Capacity	Reach	
7.5m kg			*6,470	*6,470					*6,420	*6,420	4.98
24.6ft lb			*14,260	*14,260					*14,150	*14,150	(16.3)
6.0m kg	*8,080	*8,080	*6,570	*6,570	*5,880	5,290			*5,830	4,850	6.32
19.7ft lb	*17,810	*17,810	*14,480	*14,480	*12,960	11,660			*12,850	10,690	(20.7)
4.5m kg			*7,520	*7,520	*6,120	5,170			*5,610	3,970	7.10
14.8ft lb			*16,580	*16,580	*13,490	11,400			*12,370	8,750	(23.3)
3.0m kg			*8,790	7,460	*6,610	4,960	5,410	3,580	*5,390	3,580	7.51
9.8ft lb			*19,380	16,450	*14,570	10,930	11,930	7,890	11,880	7,890	(24.6)
1.5m kg					*6,980	4,770	5,330	3,510	*5,220	3,450	7.60
4.9ft lb					*15,390	10,520	11,750	7,740	11,510	7,610	(24.9)
0.0m kg			*9,310	6,930	*6,970	4,660			5,400	3,540	7.39
0.0ft lb			*20,530	15,280	*15,370	10,270			11,900	7,800	(24.2)
-1.5m kg			*8,420	6,950	*6,390	4,650			*5,260	3,930	6.84
-4.9ft lb			*18,560	15,320	*14,090	10,250			*11,600	8,660	(22.5)
-3.0m kg	*8,160	*8,160	*6,710	6,710					*4,810	4,810	5.87
-9.8ft lb	*17,990	*17,990	*14,790	*14,790					*10,600	*10,600	(19.3)

Boom : 5.70 m (18' 8") / Arm 2.0 m (6' 7") triple grouser / Dozer Down

Lift point height (m / ft)	Lift radius								At max. reach Capacity		Reach m (ft)
	3.0 m (9.8 ft)		4.5 m (14.8 ft)		6.0 m (19.7 ft)		7.5 m (24.6 ft)		Capacity	Reach	
7.5m kg			*6,470	*6,470					*6,420	*6,420	4.98
24.6ft lb			*14,260	*14,260					*14,150	*14,150	(16.3)
6.0m kg	*8,080	*8,080	*6,570	*6,570	*5,880	5,620			*5,830	5,150	6.32
19.7ft lb	*17,810	*17,810	*14,480	*14,480	*12,960	12,390			*12,850	11,350	(20.7)
4.5m kg			*7,520	*7,520	*6,120	5,500			*5,610	4,220	7.10
14.8ft lb			*16,580	*16,580	*13,490	12,130			*12,370	9,300	(23.3)
3.0m kg			*8,790	7,980	*6,610	5,280	*5,520	3,810	*5,520	3,800	7.51
9.8ft lb			*19,380	17,590	*14,570	11,640	*12,170	8,400	*12,170	8,380	(24.6)
1.5m kg					*6,980	5,090	*5,560	3,740	*5,470	3,670	7.60
4.9ft lb					*15,390	11,220	*12,260	8,250	*12,060	8,090	(24.9)
0.0m kg			*9,310	7,440	*6,970	4,970			*5,410	3,770	7.39
0.0ft lb			*20,530	16,400	*15,370	10,960			*11,930	8,310	(24.2)
-1.5m kg			*8,420	7,460	*6,390	4,960			*5,260	4,190	6.84
-4.9ft lb			*18,560	16,450	*14,090	10,930			*11,600	9,240	(22.5)
-3.0m kg	*8,160	*8,160	*6,710	6,710					*4,810	*4,810	5.87
-9.8ft lb	*17,990	*17,990	*14,790	*14,790					*10,600	*10,600	(19.3)

- Lifting capacity are based on ISO 10567.
- Lifting capacity of the HX A Series does not exceed 75% of tipping load with the machine on firm, level ground or 87% of full hydraulic capacity.
- The Lift-point is bucket pivot mounting pin on the arm (without bucket mass).
- (\*) indicates load limited by hydraulic capacity.



# HX235A LCR

## LIFTING CAPACITY

Rating over-front Rating over-side or 360 degree

### HX235A LCR MONO BOOM

Boom : 5.70 m (18' 8") / Arm 2.4 m (7' 10") triple grouser / Without Dozer

Lift point height (m / ft)	Lift radius								At max. reach		
	3.0 m (9.8 ft)		4.5 m (14.8 ft)		6.0 m (19.7 ft)		7.5 m (24.6 ft)		Capacity		Reach (m / ft)
9.0m / 29.5ft	kg / lb	*7,630 / *16,820	*7,630 / *16,820						*7,480 / *16,490	*7,480 / *16,490	3.32 (10.9)
7.5m / 24.6ft	kg / lb			*5,900 / *13,010	*5,900 / *13,010				*5,810 / *12,810	*5,810 / *12,810	5.55 (18.2)
6.0m / 19.7ft	kg / lb			*6,100 / *13,450	*6,100 / *13,450	*5,500 / *12,130	5,040 / 11,110		*5,390 / *11,880	4,100 / 9,040	6.78 (22.2)
4.5m / 14.8ft	kg / lb	*9,960 / *21,960	*9,960 / *21,960	*7,070 / *15,590	*7,070 / *15,590	*5,830 / *12,850	4,900 / 10,800	*5,230 / *11,530	3,420 / 7,540	*5,230 / *11,530	7.51 (24.7)
3.0m / 9.8ft	kg / lb			*8,400 / *18,520	7,090 / 15,630	*6,380 / *14,070	4,670 / 10,300	*5,350 / *11,790	3,350 / 7,390	4,980 / 10,980	7.90 (25.9)
1.5m / 4.9ft	kg / lb			*9,320 / *20,550	6,650 / 14,660	*6,830 / *15,060	4,460 / 9,830	5,300 / 11,680	3,250 / 7,170	4,830 / 10,650	7.99 (26.2)
0.0m / 0.0ft	kg / lb			*9,380 / *20,680	6,450 / 14,220	*6,950 / *15,320	4,320 / 9,520	5,230 / 11,530	3,190 / 7,030	4,970 / 10,960	7.78 (25.5)
-1.5m / -4.9ft	kg / lb	*9,680 / *21,340	*9,680 / *21,340	*8,690 / *19,160	6,420 / 14,150	*6,540 / *14,420	4,280 / 9,440		*5,000 / *11,020	3,330 / 7,340	7.27 (23.8)
-3.0m / -9.8ft	kg / lb	*9,230 / *20,350	*9,230 / *20,350	*7,230 / *15,940	6,530 / 14,400	*5,280 / *11,640	4,360 / 9,610		*4,690 / *10,340	4,050 / 8,930	6.37 (20.9)

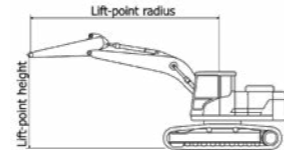
Boom : 5.70 m (18' 8") / Arm 2.4 m (7' 10") triple grouser / Dozer Up

Lift point height (m / ft)	Lift radius								At max. reach		
	3.0 m (9.8 ft)		4.5 m (14.8 ft)		6.0 m (19.7 ft)		7.5 m (24.6 ft)		Capacity		Reach (m / ft)
9.0m / 29.5ft	kg / lb	*7,630 / *16,820	*7,630 / *16,820						*7,480 / *16,490	*7,480 / *16,490	3.32 (10.9)
7.5m / 24.6ft	kg / lb			*5,900 / *13,010	*5,900 / *13,010				*5,810 / *12,810	*5,810 / *12,810	5.55 (18.2)
6.0m / 19.7ft	kg / lb			*6,100 / *13,450	*6,100 / *13,450	*5,500 / *12,130	5,340 / 11,770		*5,390 / *11,880	4,350 / 9,590	6.78 (22.2)
4.5m / 14.8ft	kg / lb	*9,960 / *21,960	*9,960 / *21,960	*7,070 / *15,590	*7,070 / *15,590	*5,830 / *12,850	5,200 / 11,460	*5,230 / *11,530	3,650 / 8,050	*5,230 / *11,530	7.51 (24.7)
3.0m / 9.8ft	kg / lb			*8,400 / *18,520	7,530 / 16,600	*6,380 / *14,070	4,970 / 10,960	*5,350 / *11,790	3,580 / 7,890	4,980 / 10,980	7.90 (25.9)
1.5m / 4.9ft	kg / lb			*9,320 / *20,550	6,650 / 15,630	*6,830 / *15,060	4,760 / 10,490	5,300 / 11,680	3,480 / 7,670	4,830 / 10,650	7.99 (26.2)
0.0m / 0.0ft	kg / lb			*9,380 / *20,680	6,890 / 15,190	*6,950 / *15,320	4,620 / 10,190	5,230 / 11,530	3,420 / 7,540	4,970 / 10,960	7.78 (25.5)
-1.5m / -4.9ft	kg / lb	*9,680 / *21,340	*9,680 / *21,340	*8,690 / *19,160	6,860 / 15,120	*6,540 / *14,420	4,580 / 10,100		*5,000 / *11,020	3,570 / 7,870	7.27 (23.8)
-3.0m / -9.8ft	kg / lb	*9,230 / *20,350	*9,230 / *20,350	*7,230 / *15,940	6,970 / 15,370	*5,280 / *11,640	4,660 / 10,270		*4,690 / *10,340	4,330 / 9,550	6.37 (20.9)

Boom : 5.70 m (18' 8") / Arm 2.4 m (7' 10") triple grouser / Dozer Down

Lift point height (m / ft)	Lift radius								At max. reach		
	3.0 m (9.8 ft)		4.5 m (14.8 ft)		6.0 m (19.7 ft)		7.5 m (24.6 ft)		Capacity		Reach (m / ft)
9.0m / 29.5ft	kg / lb	*7,630 / *16,820	*7,630 / *16,820						*7,480 / *16,490	*7,480 / *16,490	3.32 (10.9)
7.5m / 24.6ft	kg / lb			*5,900 / *13,010	*5,900 / *13,010				*5,810 / *12,810	*5,810 / *12,810	5.55 (18.2)
6.0m / 19.7ft	kg / lb			*6,100 / *13,450	*6,100 / *13,450	*5,500 / *12,130	*5,500 / *12,130		*5,390 / *11,880	4,620 / 10,190	6.78 (22.2)
4.5m / 14.8ft	kg / lb	*9,960 / *21,960	*9,960 / *21,960	*7,070 / *15,590	*7,070 / *15,590	*5,830 / *12,850	5,520 / 12,170	*5,230 / *11,530	3,880 / 8,550	*5,230 / *11,530	7.51 (24.7)
3.0m / 9.8ft	kg / lb			*8,400 / *18,520	8,060 / 17,770	*6,380 / *14,070	5,290 / 11,660	*5,350 / *11,790	3,810 / 8,400	*5,160 / *11,380	7.90 (25.9)
1.5m / 4.9ft	kg / lb			*9,320 / *20,550	7,600 / 16,760	*6,830 / *15,060	5,070 / 11,180	*5,480 / *12,080	3,710 / 8,180	*5,130 / *11,310	7.99 (26.2)
0.0m / 0.0ft	kg / lb			*9,380 / *20,680	7,400 / 16,310	*6,950 / *15,320	4,930 / 10,870	*5,390 / *11,880	3,650 / 8,050	*5,100 / *11,240	7.78 (25.5)
-1.5m / -4.9ft	kg / lb	*9,680 / *21,340	*9,680 / *21,340	*8,690 / *19,160	7,370 / 16,250	*6,540 / *14,420	4,890 / 10,780		*5,000 / *11,020	3,810 / 8,400	7.27 (23.8)
-3.0m / -9.8ft	kg / lb	*9,230 / *20,350	*9,230 / *20,350	*7,230 / *15,940	7,230 / *15,940	*5,280 / *11,640	4,980 / 10,980		*4,690 / *10,340	4,620 / 10,190	6.37 (20.9)

- Lifting capacity are based on ISO 10567.
- Lifting capacity of the HX A Series does not exceed 75% of tipping load with the machine on firm, level ground or 87% of full hydraulic capacity.
- The Lift-point is bucket pivot mounting pin on the arm (without bucket mass).
- (\*) indicates load limited by hydraulic capacity.



Rating over-front Rating over-side or 360 degree

### HX235A LCR MONO BOOM

Boom : 5.70 m (18' 8") / Arm 2.9 m (9' 6") triple grouser / Without Dozer

Lift point height (m / ft)	Lift radius										At max. reach			
	1.5 m (4.9 ft)		3.0 m (9.8 ft)		4.5 m (14.8 ft)		6.0 m (19.7 ft)		7.5 m (24.6 ft)		Capacity		Reach (m / ft)	
9.0m / 29.5ft	kg / lb											*5,230 / *11,530	*5,230 / *11,530	4.25 (13.9)
7.5m / 24.6ft	kg / lb					*5,260 / *11,600	*5,260 / *11,600	*4,810 / *10,600	*4,810 / *10,600			*4,320 / *9,520	*4,320 / *9,520	6.15 (20.2)
6.0m / 19.7ft	kg / lb					*5,520 / *12,170	*5,520 / *12,170	*5,070 / *11,180	*5,070 / *11,180			*4,020 / *8,860	*4,020 / *8,860	7.27 (23.9)
4.5m / 14.8ft	kg / lb			*8,640 / *19,050	*8,640 / *19,050	*6,490 / *14,310	*6,490 / *14,310	*5,470 / *12,060	*5,470 / *12,060	4,910 / 10,910	3,460 / 7,630	*3,950 / *8,710	*3,950 / *8,710	7.96 (26.1)
3.0m / 9.8ft	kg / lb					*7,870 / *17,350	7,220 / 15,920	*6,070 / *13,380	4,710 / 10,380	*5,130 / *11,310	3,350 / 7,390	*4,050 / *8,930	*4,050 / *8,930	8.32 (27.3)
1.5m / 4.9ft	kg / lb					*9,010 / *19,860	6,700 / 14,770	*6,630 / *14,620	4,460 / 9,830	5,290 / 11,660	3,240 / 7,140	*4,310 / *9,500	*4,310 / *9,500	8.41 (27.6)
0.0m / 0.0ft	kg / lb			*5,310 / *11,710	*5,310 / *11,710	*9,370 / *20,660	6,420 / 14,150	*6,880 / *15,170	4,290 / 9,460	5,190 / 11,440	3,150 / 6,940	*4,560 / *10,050	*4,560 / *10,050	8.21 (26.9)
-1.5m / -4.9ft	kg / lb	*5,710 / *12,590	*5,710 / *12,590	*9,760 / *21,520	*9,760 / *21,520	*8,950 / *19,730	6,340 / 13,980	*6,670 / *14,700	4,210 / 9,280	*5,040 / *11,110	3,120 / 6,880	*4,780 / *10,540	*4,780 / *10,540	7.73 (25.4)
-3.0m / -9.8ft	kg / lb			*10,420 / *22,970	*10,420 / *22,970	*19,730 / *43,950	13,980 / 30,600	*17,780 / *39,400	6,400 / 14,250	*5,790 / *12,760	4,250 / 9,370	*4,630 / *10,210	*4,630 / *10,210	6.89 (22.6)
-4.5m / -14.8ft	kg / lb			*7,190 / *15,850	*7,190 / *15,850	*5,470 / *12,060	*5,470 / *12,060					*4,060 / *8,950	*4,060 / *8,950	5.52 (18.1)

Boom : 5.70 m (18' 8") / Arm 2.9 m (9' 6") triple grouser / Dozer Up

Lift point height (m / ft)	Lift radius										At max. reach			
	1.5 m (4.9 ft)		3.0 m (9.8 ft)		4.5 m (14.8 ft)		6.0 m (19.7 ft)		7.5 m (24.6 ft)		Capacity		Reach (m / ft)	
9.0m / 29.5ft	kg / lb											*5,230 / *11,530	*5,230 / *11,530	4.25 (13.9)
7.5m / 24.6ft	kg / lb					*5,260 / *11,600	*5,260 / *11,600	*4,810 / *10,600	*4,810 / *10,600			*4,320 / *9,520	*4,320 / *9,520	6.15 (20.2)
6.0m / 19.7ft	kg / lb					*5,520 / *12,170	*5,520 / *12,170	*5,070 / *11,180	*5,070 / *11,180			*4,020 / *8,860	*4,020 / *8,860	7.27 (23.9)
4.5m / 14.8ft	kg / lb			*8,640 / *19,050	*8,640 / *19,050	*6,490 / *14,310	*6,490 / *14,310	*5,470 / *12,060	*5,470 / *12,060	4,910 / 10,910	3,690 / 8,140	*3,950 / *8,710	*3,950 / *8,710	7.96 (26.1)
3.0m / 9.8ft	kg / lb					*7,870 / *17,350	7,660 / 16,890	*6,070 / *13,380	5,010 / 11,050	*5,130 / *11,310	3,580 / 7,890	*4,050 / *8,930	*4,050 / *8,930	8.32 (27.3)
1.5m / 4.9ft	kg / lb					*9,010 / *19,860	7,140 / 15,740	*6,630 / *14,620	4,760 / 10,490	5,290 / 11,660	3,460 / 7,630	*4,310 / *9,500	*4,310 / *9,500	8.41 (27.6)
0.0m / 0.0ft	kg / lb			*5,310 / *11,710	*5,310 / *11,710	*9,370 / *20,660	6,860 / 15,120	*6,880 / *15,170	4,590 / 10,120	5,190 / 11,440	3,380 / 7,450	*4,560 / *10,050	*4,560 / *10,050	8.21 (26.9)
-1.5m / -4.9ft	kg / lb	*5,710 / *12,590	*5,710 / *12,590	*9,760 / *21,520	*9,760 / *21,520	*8,950 / *19,730	6,780 / 14,950	*6,670 / *14,700	4,510 / 9,940	*5,040 / *11,110	3,350 / 7,390	*4,780 / *10,540	*4,780 / *10,540	7.73 (25.4)
-3.0m / -9.8ft	kg / lb			*10,420 / *22,970	*10,420 / *22,970	*19,730 / *43,950	13,980 / 30,600	*17,780 / *39,400	6,400 / 14,250	*5,790 / *12,760	4,550 / 10,030	*4,630 / *10,210	*4,630 / *10,210	6.89 (22.6)
-4.5m / -14.8ft	kg / lb			*7,190 / *15,850	*7,190 / *15,850	*5,470 / *12,060	*5,470 / *12,060					*4,060 / *8,950	*4,060 / *8,950	5.52 (18.1)

Boom : 5.70 m (18' 8") / Arm 2.9 m (9' 6") triple grouser / Dozer Down

Lift point height (m / ft)	Lift radius										At max. reach	
	1.5 m (4.9 ft)		3.0 m (9.8 ft)		4.5 m (14.8 ft)		6.0 m (19.7 ft)		7.5 m			

# LIFTING CAPACITY

Rating over-front Rating over-side or 360 degree

## HX235A LCR 2-PIECE BOOM

Boom : 5.87 m (19' 3") / Arm 2.0 m (6' 7") triple grouser / Without Dozer

Lift point height (m / ft)	Lift radius								At max. reach		
	3.0 m (9.8 ft)		4.5 m (14.8 ft)		6.0 m (19.7 ft)		7.5 m (24.6 ft)		Capacity		Reach m (ft)
9.0m 29.5ft	kg lb								*11,520 *25,400	*11,520 *25,400	2.95 (9.7)
7.5m 24.6ft	kg lb	*9,560 *21,080	*9,560 *21,080	*8,000 *17,640	*8,000 *17,640				*7,300 *16,090	6,170 13,600	5.34 (17.5)
6.0m 19.7ft	kg lb	*8,930 *19,690	*8,930 *19,690	*8,160 *17,990	*8,160 *17,990	*6,610 *14,570	5,120 11,290		*6,190 *13,650	4,320 9,520	6.61 (21.7)
4.5m 14.8ft	kg lb			*8,800 *19,400	7,680 16,930	*6,760 *14,900	4,950 10,910		*5,580 *12,300	3,560 7,850	7.36 (24.1)
3.0m 9.8ft	kg lb					*6,900 *15,210	4,700 10,360	*5,390 *11,880	*5,120 *11,880	3,210 7,080	7.75 (25.4)
1.5m 4.9ft	kg lb					*6,740 *14,860	4,480 9,880	*5,100 *11,240	*4,670 *10,300	3,090 6,810	7.84 (25.7)
0.0m 0.0ft	kg lb					*6,070 *13,380	4,360 9,610	*4,340 *9,570	*4,110 *9,060	3,180 7,010	7.63 (25.0)
-1.5m -4.9ft	kg lb			*5,760 *12,700	*5,760 *12,700	*4,720 *10,410	4,360 9,610		*3,280 *7,230	*3,280 *7,230	7.11 (23.3)

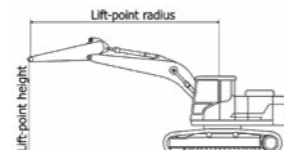
Boom : 5.87 m (19' 3") / Arm 2.0 m (6' 7") triple grouser / Dozer Up

Lift point height (m / ft)	Lift radius								At max. reach		
	3.0 m (9.8 ft)		4.5 m (14.8 ft)		6.0 m (19.7 ft)		7.5 m (24.6 ft)		Capacity		Reach m (ft)
9.0m 29.5ft	kg lb								*11,520 *25,400	*11,520 *25,400	2.95 (9.7)
7.5m 24.6ft	kg lb	*9,560 *21,080	*9,560 *21,080	*8,000 *17,640	*8,000 *17,640				*7,300 *16,090	6,520 14,370	5.34 (17.5)
6.0m 19.7ft	kg lb	*8,930 *19,690	*8,930 *19,690	*8,160 *17,990	*8,160 *17,990	*6,610 *14,570	5,420 11,950		*6,190 *13,650	4,590 10,120	6.61 (21.7)
4.5m 14.8ft	kg lb			*8,800 *19,400	8,120 17,900	*6,760 *14,900	5,250 11,570		*5,580 *12,300	3,790 8,360	7.36 (24.1)
3.0m 9.8ft	kg lb					*6,900 *15,210	5,000 11,020	*5,390 *11,880	*5,120 *11,290	3,430 7,560	7.75 (25.4)
1.5m 4.9ft	kg lb					*6,740 *14,860	4,780 10,540	*5,100 *11,240	*4,670 *10,300	3,310 7,300	7.84 (25.7)
0.0m 0.0ft	kg lb					*6,070 *13,380	4,660 10,270	*4,340 *9,570	*4,110 *9,060	3,400 7,500	7.63 (25.0)
-1.5m -4.9ft	kg lb			*5,760 *12,700	*5,760 *12,700	*4,720 *10,410	4,660 10,270		*3,280 *7,230	*3,280 *7,230	7.11 (23.3)

Boom : 5.87 m (19' 3") / Arm 2.0 m (6' 7") triple grouser / Dozer Down

Lift point height (m / ft)	Lift radius								At max. reach		
	3.0 m (9.8 ft)		4.5 m (14.8 ft)		6.0 m (19.7 ft)		7.5 m (24.6 ft)		Capacity		Reach m (ft)
9.0m 29.5ft	kg lb								*11,520 *25,400	*11,520 *25,400	2.95 (9.7)
7.5m 24.6ft	kg lb	*9,560 *21,080	*9,560 *21,080	*8,000 *17,640	*8,000 *17,640				*7,300 *16,090	6,930 15,280	5.34 (17.5)
6.0m 19.7ft	kg lb	*8,930 *19,690	*8,930 *19,690	*8,160 *17,990	*8,160 *17,990	*6,610 *14,570	5,750 12,680		*6,190 *13,650	4,870 10,740	6.61 (21.7)
4.5m 14.8ft	kg lb			*8,800 *19,400	8,660 19,090	*6,760 *14,900	5,580 12,300		*5,580 *12,300	4,040 8,910	7.36 (24.1)
3.0m 9.8ft	kg lb					*6,900 *15,210	5,330 11,750	*5,390 *11,880	*5,120 *11,290	3,650 8,050	7.75 (25.4)
1.5m 4.9ft	kg lb					*6,740 *14,860	5,100 11,240	*5,100 *11,240	*4,670 *10,300	3,530 7,780	7.84 (25.7)
0.0m 0.0ft	kg lb					*6,070 *13,380	4,980 10,980	*4,340 *9,570	*4,110 *9,060	3,630 8,000	7.63 (25.0)
-1.5m -4.9ft	kg lb			*5,760 *12,700	*5,760 *12,700	*4,720 *10,410	4,720 10,410		*3,280 *7,230	*3,280 *7,230	7.11 (23.3)

- Lifting capacity are based on ISO 10567.
- Lifting capacity of the HX A Series does not exceed 75% of tipping load with the machine on firm, level ground or 87% of full hydraulic capacity.
- The Lift-point is bucket pivot mounting pin on the arm (without bucket mass).
- (\*) indicates load limited by hydraulic capacity.



Rating over-front Rating over-side or 360 degree

## HX235A LCR 2-PIECE BOOM

Boom : 5.87 m (19' 3") / Arm 2.4 m (7' 10") triple grouser / Without Dozer

Lift point height (m / ft)	Lift radius								At max. reach			
	3.0 m (9.8 ft)		4.5 m (14.8 ft)		6.0 m (19.7 ft)		7.5 m (24.6 ft)		Capacity		Reach m (ft)	
9.0m 29.5ft	kg lb	*9,060 *19,970	*9,060 *19,970						*7,510 *16,560	*7,510 *16,560	3.89 (12.8)	
7.5m 24.6ft	kg lb			*7,610 *16,780	*7,610 *16,780				*5,850 *12,900	5,270 11,620	5.91 (19.4)	
6.0m 19.7ft	kg lb	*6,750 *14,880	*6,750 *14,880	*7,820 *17,240	*7,820 *17,240	*6,260 *13,800	5,180 11,420		*5,300 *11,680	3,880 8,550	7.07 (23.2)	
4.5m 14.8ft	kg lb			*8,510 *18,760	7,800 17,200	*6,590 *14,530	4,990 11,000	*5,270 *11,620	3,480 7,670	*5,110 *11,270	3,250 7,170	7.78 (25.5)
3.0m 9.8ft	kg lb			*9,190 *20,260	7,130 15,720	*6,810 *15,010	4,720 10,410	*5,380 *11,860	3,380 7,450	*4,790 *10,560	2,950 6,500	8.15 (26.7)
1.5m 4.9ft	kg lb			*9,110 *20,080	6,630 14,620	*6,760 *14,900	4,470 9,850	*5,190 *11,440	3,260 7,190	*4,390 *9,680	2,850 6,280	8.23 (27.0)
0.0m 0.0ft	kg lb			*8,070 *17,790	6,440 14,200	*6,230 *13,730	4,320 9,520	*4,640 *10,230	3,190 7,030	*3,910 *8,620	2,920 6,440	8.04 (26.4)
-1.5m -4.9ft	kg lb			*6,370 *14,040	*6,370 *14,040	*5,090 *11,220	4,290 9,460	*3,300 *7,280	3,220 7,100	*3,200 *7,050	3,200 7,050	7.54 (24.7)
-3.0m -9.8ft	kg lb					*3,030 *6,680	*3,030 *6,680					

Boom : 5.87 m (19' 3") / Arm 2.4 m (7' 10") triple grouser / Dozer Up

Lift point height (m / ft)	Lift radius								At max. reach			
	3.0 m (9.8 ft)		4.5 m (14.8 ft)		6.0 m (19.7 ft)		7.5 m (24.6 ft)		Capacity		Reach m (ft)	
9.0m 29.5ft	kg lb	*9,060 *19,970	*9,060 *19,970						*7,510 *16,560	*7,510 *16,560	3.89 (12.8)	
7.5m 24.6ft	kg lb			*7,610 *16,780	*7,610 *16,780				*5,850 *12,900	5,570 12,280	5.91 (19.4)	
6.0m 19.7ft	kg lb	*6,750 *14,880	*6,750 *14,880	*7,820 *17,240	*7,820 *17,240	*6,260 *13,800	5,480 12,080		*5,300 *11,680	4,120 9,080	7.07 (23.2)	
4.5m 14.8ft	kg lb			*8,510 *18,760	8,240 18,170	*6,590 *14,530	5,290 11,660	*5,270 *11,620	3,700 8,160	*5,110 *11,270	3,470 7,650	7.78 (25.5)
3.0m 9.8ft	kg lb			*9,190 *20,260	7,570 16,690	*6,810 *15,010	5,020 11,070	*5,380 *11,860	3,600 7,940	*4,790 *10,560	3,160 6,970	8.15 (26.7)
1.5m 4.9ft	kg lb			*9,110 *20,080	7,070 15,590	*6,760 *14,900	4,770 10,520	*5,190 *11,440	3,490 7,690	*4,390 *9,680	3,050 6,720	8.23 (27.0)
0.0m 0.0ft	kg lb			*8,070 *17,790	6,880 15,170	*6,230 *13,730	4,620 10,190	*4,640 *10,230	3,420 7,540	*3,910 *8,620	3,130 6,900	8.04 (26.4)
-1.5m -4.9ft	kg lb			*6,370 *14,040	*6,370 *14,040	*5,090 *11,220	4,590 10,120	*3,300 *7,280	3,300 7,280	*3,200 *7,050	3,200 7,050	7.54 (24.7)
-3.0m -9.8ft	kg lb					*3,030 *6,680	*3,030 *6,680					

Boom : 5.87 m (19' 3") / Arm 2.4 m (7' 10") triple grouser / Dozer Down

Lift point height (m / ft)	Lift radius								At max. reach			
	3.0 m (9.8 ft)		4.5 m (14.8 ft)		6.0 m (19.7 ft)		7.5 m (24.6 ft)		Capacity		Reach m (ft)	
9.0m 29.5ft	kg lb	*9,060 *19,970	*9,060 *19,970						*7,510 *16,560	*7,510 *16,560	3.89 (12.8)	
7.5m 24.6ft	kg lb			*7,610 *16,780	*7,610 *16,780				*5,850 *12,900	*5,850 *12,900	5.91 (19.4)	
6.0m 19.7ft	kg lb	*6,750 *14,880	*6,750 *14,880	*7,820 *17,240	*7,820 *17,240	*6,260 *13,800	5,820 12,830		*5,300 *11,680	4,380 9,660	7.07 (23.2)	
4.5m 14.8ft	kg lb			*8,510 *18,760	*8,510 *18,760	*6,590 *14,530	5,620 12,390	*5,270 *11,620	3,940 8,690	*5,110 *11,270	3,700 8,160	7.78 (25.5)
3.0m 9.8ft	kg lb			*9,190 *20,260	8,110 17,880	*6,810 *15,010	5,350 11,790	*5,380 *11,860	3,840 8,470	*4,790 *10,560	3,370 7,430	8.15 (26.7)
1.5m 4.9ft	kg lb			*9,110 *20,080	7,600 16,760	*6,760 *14,900	5,090 11,220	*5,190 *11,440	3,730 8,220	*4,390 *9,680	3,260 7,190	8.23 (27.0)
0.0m 0.0ft	kg lb			*8,070 *17,790	7,400 16,310	*6,230 *13,730	4,940 10,890	*4,640 *10,230	3,650 8,050	*3,910 *8,620	3,340 7,360	8.04 (26.4)
-1.5m -4.9ft	kg lb			*6,370 *14,040	*6,370 *14,040	*5,090 *11,220	4,910 10,820	*3,300 *7,280	3,300 7,280	*3,200 *7,050	3,200 7,050	7.54 (24.7)

# LIFTING CAPACITY

Rating over-front Rating over-side or 360 degree

## HX235A LCR 2-PIECE BOOM

Boom : 5.87 m (19' 3") / Arm 2.9 m (9' 6") triple grouser / Without Dozer

Lift point height (m / ft)	Lift radius								At max. reach		Reach (m / ft)	
	3.0 m (9.8 ft)		4.5 m (14.8 ft)		6.0 m (19.7 ft)		7.5 m (24.6 ft)		Capacity	Reach		
9.0m / 29.5ft	kg			*5,790	*5,790					*5,040	*5,040	4.76 (15.6)
7.5m / 24.6ft	kg			*6,180	*6,180	*5,610	5,300			*4,190	*4,190	6.51 (21.4)
6.0m / 19.7ft	kg			*6,210	*6,210	*5,880	5,270	*4,300	3,560	*3,860	3,480	7.58 (24.9)
4.5m / 14.8ft	kg	*10,100	*10,100	*8,110	7,980	*6,280	5,060	*4,980	3,520	*3,760	2,970	8.24 (27.0)
3.0m / 9.8ft	kg			*8,930	7,290	*6,660	4,760	*5,210	3,390	*3,810	2,710	8.60 (28.2)
1.5m / 4.9ft	kg			*9,170	6,700	*6,750	4,480	*5,240	3,250	*3,990	2,610	8.67 (28.5)
0.0m / 0.0ft	kg			*8,490	6,410	*6,400	4,290	*4,850	3,150	*3,770	2,660	8.49 (27.9)
-1.5m / -4.9ft	kg	*7,840	*7,840	*7,030	6,340	*5,470	4,210	*3,950	3,120	*3,210	2,870	8.02 (26.3)
-3.0m / -9.8ft	kg	*17,280	*17,280	*15,500	13,980	*12,060	9,280	*8,710	6,880	*7,080	6,330	7.21 (23.7)

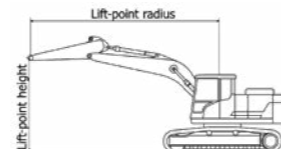
Boom : 5.87 m (19' 3") / Arm 2.9 m (9' 6") triple grouser / Dozer Up

Lift point height (m / ft)	Lift radius								At max. reach		Reach (m / ft)	
	3.0 m (9.8 ft)		4.5 m (14.8 ft)		6.0 m (19.7 ft)		7.5 m (24.6 ft)		Capacity	Reach		
9.0m / 29.5ft	kg			*5,790	*5,790					*5,040	*5,040	4.76 (15.6)
7.5m / 24.6ft	kg			*6,180	*6,180	*5,610	5,600			*4,190	*4,190	6.51 (21.4)
6.0m / 19.7ft	kg			*6,210	*6,210	*5,880	5,570	*4,300	3,790	*3,860	3,710	7.58 (24.9)
4.5m / 14.8ft	kg	*10,100	*10,100	*8,110	*8,110	*6,280	5,360	*4,980	3,740	*3,760	3,170	8.24 (27.0)
3.0m / 9.8ft	kg			*8,930	7,730	*6,660	5,060	*5,210	3,620	*3,810	2,900	8.60 (28.2)
1.5m / 4.9ft	kg			*9,170	7,140	*6,750	4,780	*5,240	3,480	*3,990	2,800	8.67 (28.5)
0.0m / 0.0ft	kg			*8,490	6,850	*6,400	4,590	*4,850	3,380	*3,770	2,850	8.49 (27.9)
-1.5m / -4.9ft	kg	*7,840	*7,840	*7,030	6,780	*5,470	4,520	*3,950	3,350	*3,210	3,090	8.02 (26.3)
-3.0m / -9.8ft	kg	*17,280	*17,280	*15,500	14,950	*12,060	9,960	*8,710	7,390	*7,080	6,810	7.21 (23.7)

Boom : 5.87 m (19' 3") / Arm 2.9 m (9' 6") triple grouser / Dozer Down

Lift point height (m / ft)	Lift radius								At max. reach		Reach (m / ft)	
	3.0 m (9.8 ft)		4.5 m (14.8 ft)		6.0 m (19.7 ft)		7.5 m (24.6 ft)		Capacity	Reach		
9.0m / 29.5ft	kg			*5,790	*5,790					*5,040	*5,040	4.76 (15.6)
7.5m / 24.6ft	kg			*6,180	*6,180	*5,610	*5,610			*4,190	*4,190	6.51 (21.4)
6.0m / 19.7ft	kg			*6,210	*6,210	*5,880	*5,880	*4,300	4,030	*3,860	*3,860	7.58 (24.9)
4.5m / 14.8ft	kg	*10,100	*10,100	*8,110	*8,110	*6,280	5,690	*4,980	3,980	*3,760	3,380	8.24 (27.0)
3.0m / 9.8ft	kg			*8,930	8,270	*6,660	5,390	*5,210	3,850	*3,810	3,090	8.60 (28.2)
1.5m / 4.9ft	kg			*9,170	7,670	*6,750	5,110	*5,240	3,710	*3,990	2,990	8.67 (28.5)
0.0m / 0.0ft	kg			*8,490	7,370	*6,400	4,910	*4,850	3,610	*3,770	3,050	8.49 (27.9)
-1.5m / -4.9ft	kg	*7,840	*7,840	*7,030	6,750	*5,470	4,840	*3,950	3,590	*3,210	*3,210	8.02 (26.3)
-3.0m / -9.8ft	kg	*17,280	*17,280	*15,500	15,600	*12,060	10,670	*8,710	7,910	*7,080	*7,080	7.21 (23.7)

- Lifting capacity are based on ISO 10567.
- Lifting capacity of the HX A Series does not exceed 75% of tipping load with the machine on firm, level ground or 87% of full hydraulic capacity.
- The Lift-point is bucket pivot mounting pin on the arm (without bucket mass).
- (\*) indicates load limited by hydraulic capacity.



# BUCKET SELECTION GUIDE & DIGGING FORCE

## BUCKETS

All buckets are welded with high-strength steel.

SAE heaped  
m<sup>3</sup> (yd<sup>3</sup>)

- ⊙ 0.81 (1.06)
- ⊙ 0.86 (1.12)
- ⊙ 0.92 (1.20)
- ⊙ 1.05 (1.37)
- ⊙ 1.28 (1.67)

◆ 0.92 (1.20)

◆ 1.08 (1.41)

Capacity m <sup>3</sup> (yd <sup>3</sup> )	Width mm (in)	Weight kg (lb)	Tooth EA	Recommendation mm (ft.in)						
				5,700 (18' 8") Mono Boom			5,870 (19' 3") 2-Piece Boom			
SAE heaped	CECE heaped	Without side cutters	With side cutters	2,000 (6' 7") Arm	2,400 (7' 10") Arm	2,900 (9' 6") Arm	2,000 (6' 7") Arm	2,400 (7' 10") Arm	2,900 (9' 6") Arm	
⊙ 0.81 (1.06)	0.72 (0.94)	975 (38.4")	1,125 (44.3")	700 (1,540)	5	●	●	●	●	●
⊙ 0.86 (1.12)	0.76 (0.99)	1,030 (40.6")	1,170 (46.1")	710 (1,570)	5	●	●	●	●	●
⊙ 0.92 (1.20)	0.81 (1.06)	1,085 (42.7")	1,230 (48.4")	750 (1,650)	5	●	●	●	●	●
⊙ 1.05 (1.37)	0.96 (1.26)	1,220 (48.0")	1,370 (53.9")	790 (1,740)	5	●	●	●	●	●
⊙ 1.28 (1.67)	1.11 (1.45)	1,455 (57.3")	1,605 (63.2")	885 (1,950)	6	●	■	▲	■	■
◆ 0.92 (1.20)	0.83 (1.09)	1,050 (41.3")	1,095 (43.1")	865 (1,910)	5	●	●	●	●	●
◆ 1.08 (1.41)	0.97 (1.27)	1,200 (47.2")	1,245 (49.0")	935 (2,060)	5	●	●	■	●	■

- ⊙ General Purpose
- ◆ Heavy duty bucket
- ◆ Rock-Heavy duty bucket
- ★ Long reach bucket
- : Applicable for materials with density of 2,100 kg/m<sup>3</sup> (3,500 lb/yd<sup>3</sup>) or less
- : Applicable for materials with density of 1,800 kg/m<sup>3</sup> (3,000 lb/yd<sup>3</sup>) or less
- : Applicable for materials with density of 1,500 kg/m<sup>3</sup> (2,500 lb/yd<sup>3</sup>) or less
- ▲ : Applicable for materials with density of 1,200 kg/m<sup>3</sup> (2,000 lb/yd<sup>3</sup>) or less
- : Not Recommended

## ATTACHMENT

Booms and arms are welded with a low-stress, full-box section design. 5.70m (18'8") Mono, 5.87m (19'3") 2 Piece Booms and 2.0m (6'7"), 2.4m (7'10"), 2.90m (9'6") Arms are available.

## DIGGING FORCE

Boom	Length	mm (ft.in)	5,700 (18' 8")			5,870 (19' 3") 2 PCS			Remark
			Weight	kg (lb)	2,000 (6' 7")	2,400 (7' 10")	2,900 (9' 6")	2,000 (6' 7")	
Arm	Length	mm (ft.in)	2,000 (6' 7")	2,400 (7' 10")	2,900 (9' 6")	2,000 (6' 7")	2,400 (7' 10")	2,900 (9' 6")	[ ] : Power Boost
	Weight	kg (lb)	820 (1,810)	900 (1,980)	985 (2,170)	820 (1,810)	900 (1,980)	985 (2,170)	
Bucket digging force	SAE	kN	130.4 [141.6]	130.4 [141.6]	130.4 [141.6]	130.4 [141.6]	130.4 [141.6]	130.4 [141.6]	
		kgf	13,300 [14,440]	13,300 [14,440]	13,300 [14,440]	13,300 [14,440]	13,300 [14,440]	13,300 [14,440]	
	lbf	29,320 [31,830]	29,320 [31,830]	29,320 [31,830]	29,320 [31,830]	29,320 [31,830]	29,320 [31,830]		
	ISO	kN	152.3 [165.3]	152.3 [165.3]	152.3 [165.3]	152.3 [165.3]	152.3 [165.3]	152.3 [165.3]	
Arm crowd force	SAE	kN	144.3 [156.6]	119.3 [129.4]	102.8 [111.6]	144.3 [156.6]	119.3 [129.4]	102.8 [111.6]	
		kgf	14,710 [15,970]	12,160 [13,200]	10,480 [11,380]	14,710 [15,970]	12,160 [13,200]	10,480 [11,380]	
	lbf	32,430 [35,210]	26,810 [29,100]	23,100 [25,900]	32,430 [35,210]	26,810 [29,100]	23,100 [25,900]		
	ISO	kN	152.0 [165.0]	124.7 [135.4]	106.9 [116.0]	152.0 [165.0]	124.7 [135.4]	106.9 [116.0]	
		kgf	15,500 [16,830]	12,720 [13,810]	10,900 [11,830]	15,500 [16,830]	12,720 [13,810]	10,900 [11,830]	
		lbf	34,170 [37,100]	28,040 [30,450]	24,030 [26,080]	34,170 [37,100]	28,040 [30,450]	24,030 [26,080]	

Note: Arm weight includes bucket cylinder, linkage, and pin

HX235A LCR  
**STANDARD / OPTION**

ENGINE	STD	OPT
CUMMINS B6.7 Engine	●	
<b>HYDRAULIC SYSTEM</b>		
<b>INTELLIGENT POWER CONTROL (IPC)</b>		
3-power mode, 2-work mode, user mode	●	
Variable Power Control	●	
Electrical Pump Flow Control (EPFC)	●	
Attachment Mode Flow Control		●
Engine Auto Idle	●	
Engine Auto Shutdown Control	●	
Electronic Fan Control	●	
Hyundai Bio Hydraulic Oil (HBHO)		●
<b>CAB &amp; INTERIOR</b>		
<b>ISO STANDARD CABIN</b>		
Rise-up type windshield wiper	●	
Radio / USB player	●	
Handsfree mobile phone system with USB	●	
12 volt power outlet (24V DC to 12V DC converter)	●	
Electric horn	●	
All-weather steel cab with 360° visibility	●	
Safety glass - Tempered glass	●	
Safety glass - Tempered glass with front laminated glass		●
Sliding fold-in front window	●	
Sliding side window(LH)	●	
Lockable door	●	
Storage compartment & Ashtray	●	
Transparent cabin roof-cover	●	
Sun visor	●	
Door and cab locks, one key	●	
Mechanical suspension seat with heater	●	
Pilot-operated slidable joystick	●	
Console box height adjust system	●	
<b>AUTOMATIC CLIMATE CONTROL</b>		
Air conditioner & heater	●	
Defroster	●	
Starting Aid (air grid heater) for cold weather	●	
<b>CENTRALIZED MONITORING</b>		
8" LCD display	●	
LED room lamp	●	
Engine speed or Trip meter/Accel.	●	
Engine coolant temperature gauge	●	
Max power	●	
Low speed / High speed	●	
Auto idle	●	
Overload warning with alarm		●
Check engine	●	
Air cleaner clogging	●	
Indicators	●	
ECO gauges	●	
Fuel level gauge	●	
Hyd. oil temperature gauge	●	
Fuel warmer	●	
Warnings	●	
Communication error	●	
Low battery	●	
Clock	●	
Cabin lights		●
Cabin front window rain guard		●
Cabin roof-steel cover		●
<b>SEAT</b>		
Adjustable air suspension seat with heater		●
<b>CABIN FOPS (ISO 10262) LEVEL 2</b>		
FOPS (Falling Object Protective Structure) - ISO 10262 Level 2		●
<b>CABIN ROPS (ISO 12117-2)</b>		
ROPS (Roll Over Protective Structure)	●	

SAFETY	STD	OPT
Lifting Mode	●	
Battery master switch	●	
Rearview camera		●
AAVM (Advanced Around View Monitoring)		●
Four front working lights (2 boom mounted, 2 front frame mounted)	●	
Travel alarm	●	
Rear work lamp		●
Beacon lamp		●
Electronic swing parking brake control	●	
Boom holding system	●	
Arm holding system	●	
Safety lock valve for boom cylinder with overload warning device		●
Safety lock valve for arm cylinder		●
Swing Lock System		●
Two outside rearview mirror	●	
<b>ATTACHMENT</b>		
<b>BOOMS</b>		
5.70 m mono, 18' 8"	●	
5.87 m 2-piece, 19' 3"		●
<b>ARMS</b>		
2.0 m, 6' 7"		●
2.4 m, 7' 10"		●
2.90 m, 9' 6"	●	
<b>OTHERS</b>		
Removable clean-out dust net for cooler	●	
Removable reservoir tank	●	
Fuel Pre-Filter	●	
Fuel warmer	●	
Self-diagnostics system	●	
Hi MATE (Remote Management System)		●
Batteries (2 x 12V x 100 AH)	●	
Fuel filler pump (50 lpm)		●
Single-acting piping kit (breaker, etc.)		●
Double-acting piping kit (clamshell, etc.)		●
Rotating Piping Kit		●
Air Compressor		●
Engine coolant heater		●
LED lamp		●
Smart button key		●
Electrical proportional Switch on RCV		●
Quick coupler piping		●
Quick coupler		●
One Pedal Straight Travel System		●
Accumulator for lowering work equipment	●	
Pattern change valve (2 patterns)		●
Fine Swing Control System		●
Tool kit		●
Proportional Auxiliary Hydraulic System		●
2 Way Proportional RCV & Pedal Control Selection		●
<b>UNDERCARRIAGE</b>		
Lower frame under cover (Additional)		●
Lower frame under cover (Normal)	●	
<b>TRACK SHOES</b>		
Triple grousers shoe 600mm (24")	●	
Triple grousers shoe 700mm (28")		●
Triple grousers shoe 800mm (32")		●
Track rail guard	●	
Dozer blade		●

\* Standard and optional equipment may vary. Contact your Hyundai dealer for more information.  
The machine may vary according to International standards.  
\* The photos may include attachments and optional equipment that are not available in your area.  
\* Materials and specifications are subject to change without advance notice.  
\* All imperial measurements rounded off to the nearest pound or inch.

HX235A LCR  
**MEMO**