

HX360

The Next Generation of Excavators

36 Ton Large Excavator

304 HP / 1,800 rpm



HYUNDAI



ABOVE AND BEYOND

THE NEXT GENERATION OF EXCAVATORS

HD Hyundai Construction Equipment's vision of delivering a refined yet dignified design, offering customers an experience of understated elegance and sophistication.

Productivity

- Enhanced Operating Performance and Durability
- FEH (Fully Electro-Hydraulic) System
- Top-Level Lifting Power and Stability
- Machine Guidance(2D) & Smart Control
- Breaker Assist & Auto Breaker
- New Designed Joystick
- Weighing
- Enhanced Predictive & Preventive Maintenance Functions
- Non-Face-to-Face Remote Diagnosis & Response Functions

Safety

- SAVM (Smart Around View Monitoring)
 - AI-powered real-time detection and alert system for surrounding individuals.
- Lifting Performance Visualization & Risk Warning System
- Lift Assist Pro
 - Real-time tip-over alerts and equipment status monitoring
- Operator Guide and Work Efficiency Enhancement

Comfort

- User-Friendly Interface
- Cabin Design Maximizing Operator Convenience
- Ambient Light Application
- Providing Top-Level Operational Convenience
- FEH (Electronic Hydraulic Control) System Application
- Real-time Flow Control and Optimization
- Fuel Efficiency Improvement and Efficiency Maximization

Smart & Serviceability

- Digital Platform 'HYUNDAI CONNECT'
- Digital Key Function (Hyundai Connect App Integration)
- Equipment Operation History Inquiry and Analysis
 - Optimized Fleet & Rental Equipment Management

PRODUCTIVITY

Powerful sophistication that takes you further ahead

The HX360L's high-performance engine with a robust design delivers outstanding fuel efficiency and high productivity. It provides a comfortable work environment for the operator to work more precisely and efficiently.



FEH (Fully Electro-Hydraulic) System

The new machines have a FEH system that improves fuel consumption by controlling flow rate via a CPU.



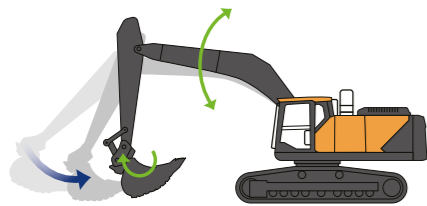
Equipped with HYUNDAI engine

The HX400L and HX360L have a new high-performance Stage V Hyundai engine, with enhanced durability and improved ease of maintenance.



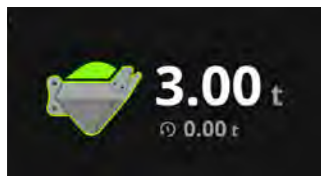
Enhanced digging force

A large-capacity bucket with improved cutting edge has greatly increased productivity compared to the standard bucket size.



Grade Control

The boom and bucket are automatically controlled by simply operating the arm. This makes levelling easier and improves precision.



Weighing

By estimating and displaying the weight of objects in the bucket in real time, you can calculate truck costs and shipping volumes on site.

PRODUCTIVITY

22% [↑] up

FUEL EFFICIENCY

9% [↑] up



SAFETY

Enhanced safety with a strong exterior

The true value of the HX360L comes from its durability and high productivity.

The strong upper and lower structures can withstand external shocks and high-load operations, and the work performance verified by rigorous performance tests provides high reliability even in harsh environments



Cabin guard

A guard is installed to protect the operator from falling objects from above during work in rough terrain such as mines.



New designed counterweight

A newly designed counterweight enhances the machine's powerful appearance and gives customers a sense of pride.



Built-in rear lamp and camera

A rear lamp and camera are built into the counterweight, increasing their durability and improving the exterior design.



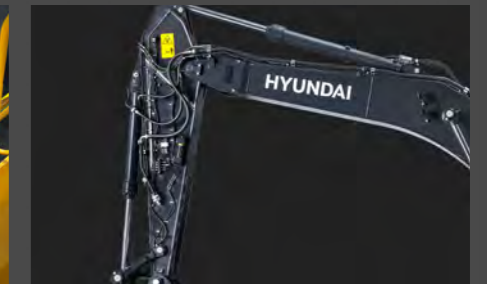
Side Access

New model is designed to make operator to get maintenance easy by giving side access structure in order to climb up the machine.



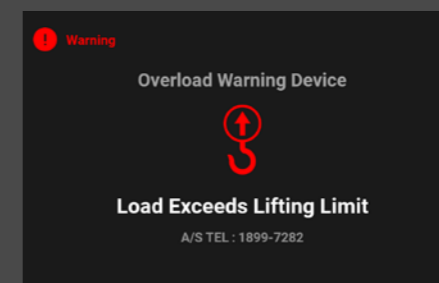
Beacon lamp

Four beacon lamps mounted on the upper corner of the cabin help when there is poor visibility due to dust on site.



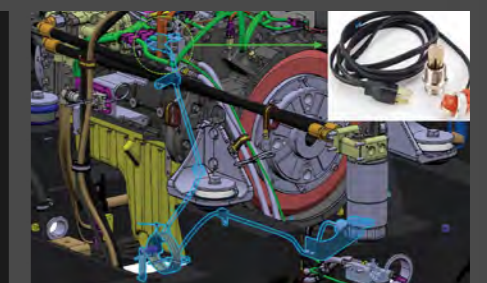
Enhanced Boom and Arm durability

Both the boom and arm have been redesigned to be more durable by increasing the box size of the boom and changing the structure of the arm.



Overload warning notification

When an overload is detected, a first warning is displayed. Following that, a colored notification fully informs the operator of the risk of overturning.



Improved start-up in ultra-low temperature environments **OPTION**

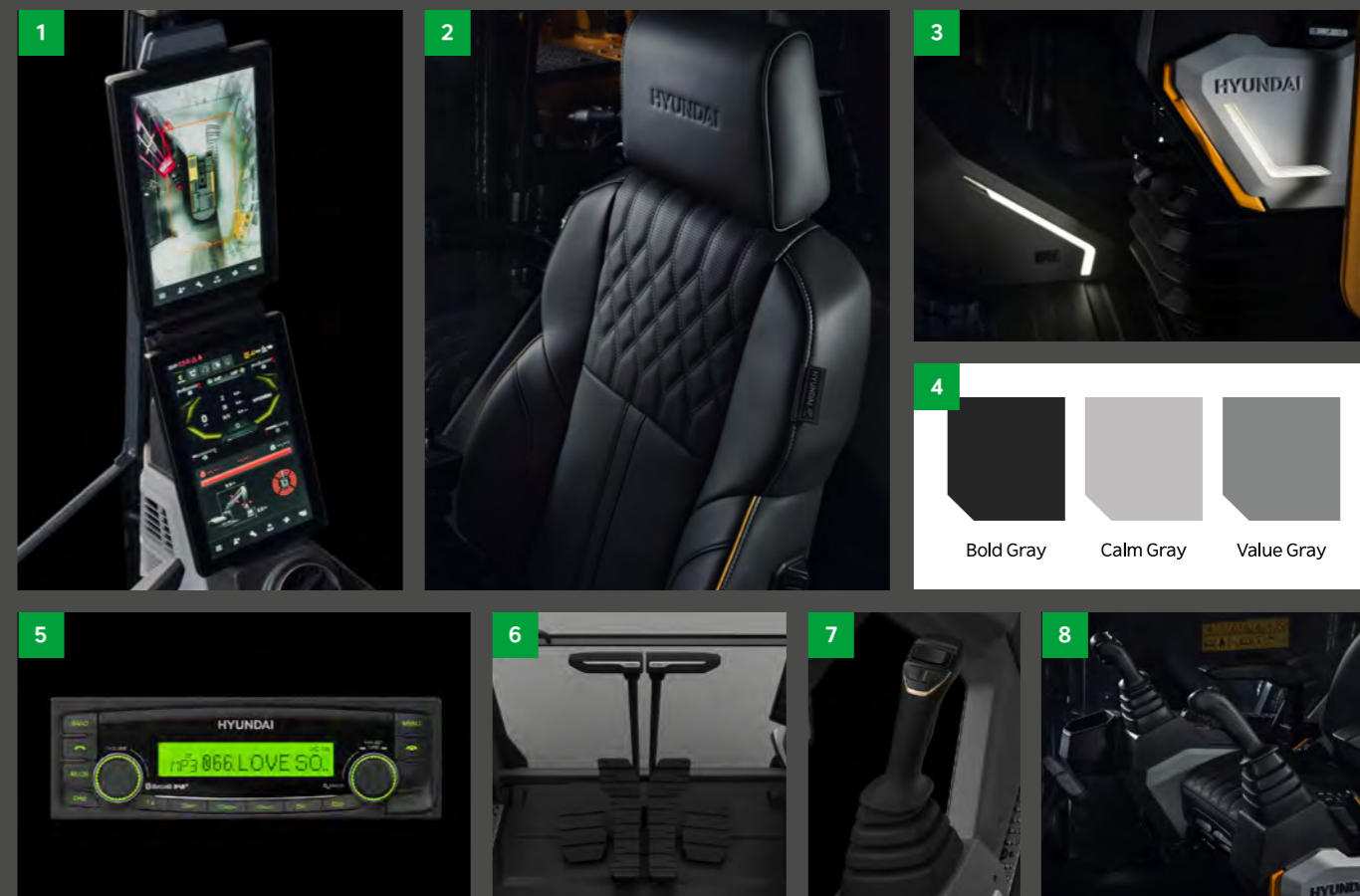
The engine's internal temperature is increased by heating the coolant with electric heaters in the engine through an external power source, which helps start the engine in extremely cold environments. It is compatible with both 110V and 220V, depending on the region's operating environment.

COMFORT

Interior that completes a comfortable journey

The interior design reflects the strength and dignity of Hyundai Construction Equipment, and incorporates productivity and convenience.

The advanced infotainment system with advanced convenience technology completes an efficient work journey and provides a comfortable working environment.



1. 12.8-inch large screen

The large 12.8-inch FHD screen provides excellent legibility compared to the 8-inch screen of the previous model. It can also be divided into sections, allowing the operator to check multiple conditions at once.

2. More comfortable seats

Three options of seat are available to make all operators feel comfortable in any work environment.

3. Stylish interior lighting

The H-line interior lighting adds value and sophistication to the interior.

4. Premium-quality colors

With more refined colors than our existing products, it enhances the dignity of on-site professionals.

5. Modern audio system

DAB functionality enables Bluetooth and digital radio broadcast reception. It supports up to 4 channels of speaker output.

6. Separate driving straight-ahead pedal

When driving long distances, the equipment can be driven straight with a separate straight-ahead pedal without a separate switch. When not in use, the pedal can be used as a footrest by locking the function.

7. Improved lever operability and electro-hydraulic system

The spring strength has been adjusted ergonomically to improve the operator's comfort and the electro-hydraulic system has been applied to optimize performance and enhance safety.

8. Convenient joystick steering

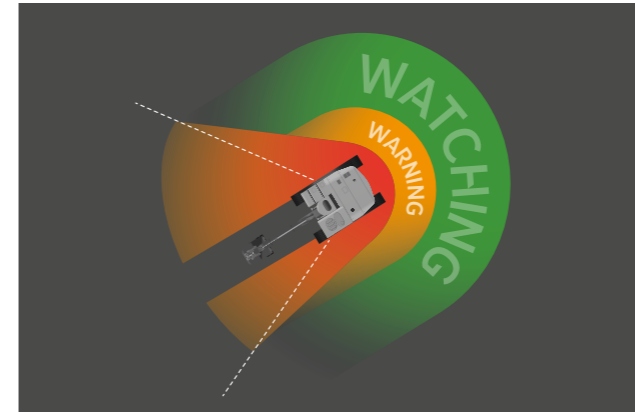
The joystick steering that comes as standard, allows operators to drive forwards, backwards and turn left or right.

SMART

Technology that makes safety perfect

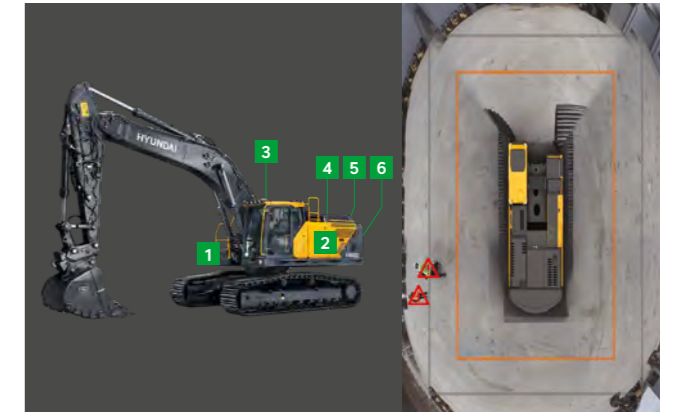
With cutting-edge technology and design optimized for hazardous work environments, safety of operators is guaranteed.

By allowing operators to focus on their work without worrying about safety issues, it will become a reliable partner on the grand journey.



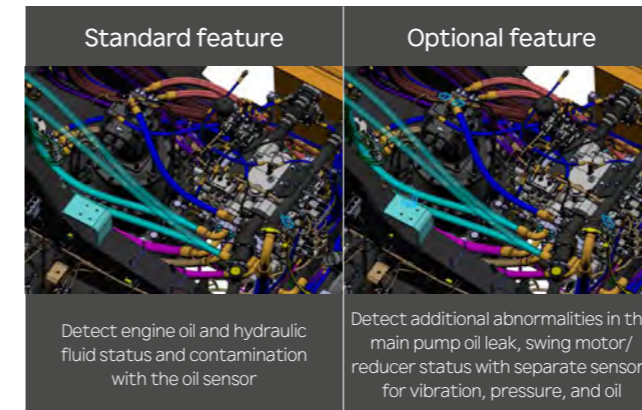
ADS (Advanced Detection System) OPTION

This provides a 330-degree detection angle to the left and right side of the machine covering 6-meters. If an obstacle is detected, visual and audible warnings are activated.



SAVM (Smart Around View Monitoring) OPTION

SAVM detects people and objects around the equipment in real time using AI and displays warning signs on the monitor. Six cameras allow you to view a video on a big 12.8-inch screen.



EHM (Equipment Health Monitoring)

EHM provides real-time monitoring and diagnosis of equipment, to prevent catastrophic failures and avoid machine downtime.



White noise buzzer

The white noise alert tone using wideband frequency quickly notifies the location of the equipment, and the sound wave quickly dissipates compared to a general buzzer, eliminating noise complaints from the surrounding area.



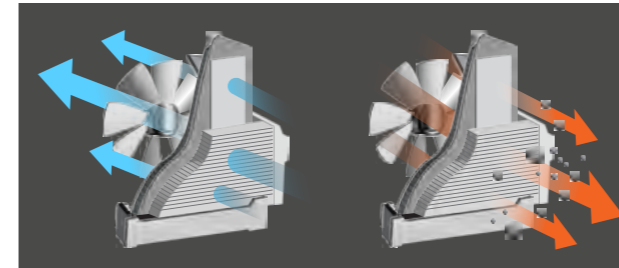
E-Boundary smart control for improved safety

You can set a virtual restricted area based on the local coordinate system of the equipment. It improves safety by warning the operator when there is a risk of contact with areas such as the floor, ceiling and wall

SERVICEABILITY

Convenient maintenance with smart technology

We are creating smart construction sites with digital technology based on IoT, ICT, and AI. You can control and monitor the site using a computer or smartphone, allowing for more efficient work time management.



Easy maintenance and cleaning with reversible fan

The reversible fan function allows for easy maintenance and cleaning of the fan, which increases maintainability and helps to increase the equipment's durability.



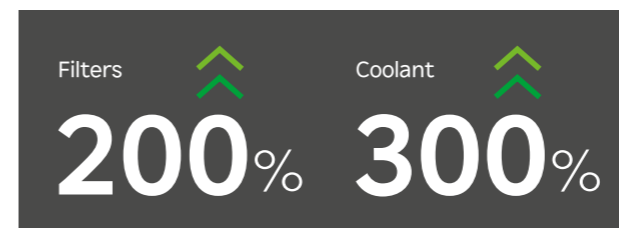
Simplified after-treatment device

The simplified integrated after-treatment device minimizes failure factors and applies an automatic after-treatment device regeneration system that does not require frequent forced regeneration.



Increased convenience of replacing filters

The filters in the pump room have been rearranged and the opening area of the filter cover has been expanded to improve the ease of maintenance.

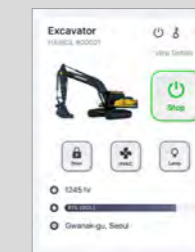


Long-life filters and coolant

Replacement intervals for engine oil, engine oil filters, and fuel filters have been extended from 500 to 1,000 hours (when CK-4 engine oil is used) and coolant replacement intervals have been extended from 2,000 to 6,000 hours.

HYUNDAI CONNECT

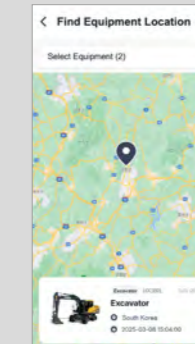
HYUNDAI CONNECT is the latest technology that allows you to check and manage the operating status of equipment, the presence of any abnormalities, and consumable information that requires periodic management, using a computer or smartphone via the mobile phone network. You can check the status of equipment in operation on site, even in the office or on the move, without any time or space constraints, and manage the equipment along with service selection.



Digital Key & Remote Start/Climate Control

With the Hyundai Connect app, you can start the equipment and remotely control various functions (climate control, horn, lamps, door lock/unlock) without a physical key. You can register multiple drivers using

a smartphone and preheat the equipment or adjust the cabin for a comfortable environment before boarding.



Location tracking and theft prevention function

You can check the location of your equipment through the Hyundai Connect web or mobile app and track its route if it is in motion. Additionally, you can set up alerts to prevent theft or misuse if the equipment moves outside a predefined area.



Maintenance notifications

If there is a risk of failure after notification and diagnosis of the consumable replacement cycle, the system provides tips on how to deal with the type of failure.



Fleet Monitoring Dashboard & Reports

Through the web and app, you can monitor equipment operation details such

as working hours and idle time. You can also configure a dashboard to display key data, including fuel consumption and carbon emissions, or generate detailed equipment reports as needed.

SPECIFICATIONS

ENGINE	
Maker / Model	HYUNDAI / DX08
Type	4-cycle, turbocharged, charge air cooled, controlled by ECU
Rated Power (SAE J1995)	304 HP (227 kW) at 1,800 rpm
Max. Power	304 HP (227 kW) at 1,800 rpm
Max. Torque	1,230 N·m (907 lb-ft) at 1,200 rpm

HYDRAULIC SYSTEM	
MAIN PUMP	
Type	Variable displacement tandem axis piston pumps
Max. Oil Flow	2x360 ℓ/min (2x95.1 us gpm)
Rated speed	1,800

Cross-sensing and fuel saving pump system.

HYDRAULIC MOTORS	
Travel	Variable displacement axial piston motor
Swing	Axial piston motor

RELIEF VALVE SETTING	
Maximum pressure	350kgf/cm ² (4,980psi)
Maximum pressure(Power Boost)	370kgf/cm ² (5,270psi)

HYDRAULIC CYLINDERS	
No. of Cylinder	Boom : Ø150 × 1450mm
Bore X Stroke	Arm : Ø170 × 1805mm
	Bucket : Ø150x1300mm

DRIVES & BRAKES	
Drive Method	Variable displacement axial piston motor
Braking system	Automatic, spring applied hydraulic released
Max. Drawbar Pull	30,001 kgf/cm ² (66140 lb)
Max. Travel Speed (High / Low)	5.6km/hr(3.48mph) / 3.2km/hr(1.98mph)
Gradeability	35%(70%)
Parking Brake	5.8km/hr / 3.6km/hr

CONTROL	
Pilot pressure operated joysticks and pedals with detachable lever provide almost effortless and fatigueless operation.	
Pilot Control	Two joysticks with one safety lever (LH) Swing and Arm, (RH) Boom and bucket
Traveling and Steering	Two levers with pedals
Engine Throttle	Electric, dial type

SWING SYSTEM	
Swing Motor	Fixed displacement axial piston motor
Swing Reduction	Planetary gear reduction
Swing Bearing Lubrication	Grease-bathed
Swing Brake	Multi wet disc
Swing Speed	9.7 rpm

COOLANT & LUBRICANT CAPACITY			
	liter	US gal	UK gal
Fuel Tank	600	158.5	132
Engine Coolant	46.75	12.4	10.33
Engine Oil	35	9.2	7.7
Hydraulic System (Including Tank)	475	125.5	104.5
Hydraulic Tank	247	65.3	54.4
Def/Adblue®	72	19	12.8

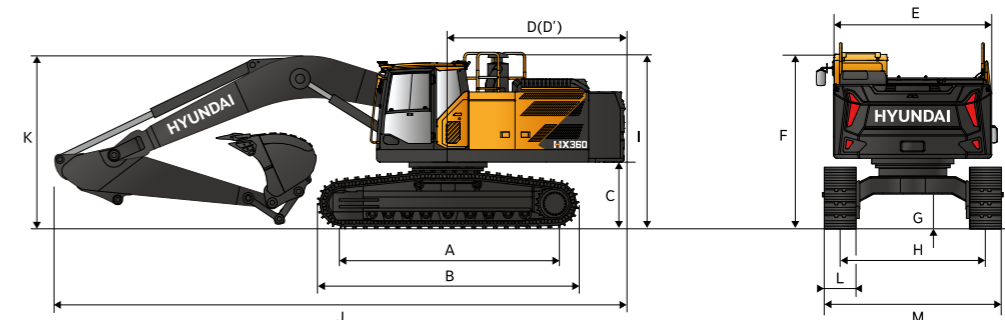
UNDERCARRIAGE	
The X-leg type center frame is integrally welded with reinforced box-section track frames. The undercarriage includes lubricated rollers, idlers, track adjusters with shock absorbing springs and sprockets, and a track chain with double or triple grouser shoes.	
Center Frame	X - Leg Type
Track Frame	Pentagonal Box Type
No. of Shoes on Each Side	48 EA
No. of Carrier Roller on Each Side	2 EA
No. of Track Roller on Each Side	9 EA
No. of Rail Guard on Each Side	2 EA

OPERATING WEIGHT (APPROXIMATE)	
Operating weight, including 6,500mm(21' 4") boom, 3,200mm(10' 6") arm, SAE heaped 1.81 m ³ (2.37 yd ³) bucket, lubricant, coolant, full fuel tank, full hydraulic tank, and all standard equipments.	

OPERATING WEIGHT				
Shoes	Operating Weight			Ground Pressure
Type	Width mm(in)	kg (lb)		kgf/cm ² (psi)
Triple Grouser	600 (24")	HX360L	36,390 (80,230)	0.699 (9.94)
		HX360NL	36,200 (79,810)	0.696 (9.9)
	700 (28")	HX360L	36,770 (81,060)	0.606 (8.62)
		HX360L	37,130 (81,860)	0.535 (7.61)
Double Grouser	800 (32")	HX360L	37,550 (82,780)	0.481 (6.84)
	900 (36")	HX360L	36,920 (81,390)	0.708 (10.07)

DIMENSIONS & WORKING RANGE

HX360L DIMENSIONS					
6.2m (20' 4"), 6.5m (21' 4"), 2PCS BOOM and 2.6m (8' 6"), 3.2m (10' 6"), 3.95m (12' 10") ARM					

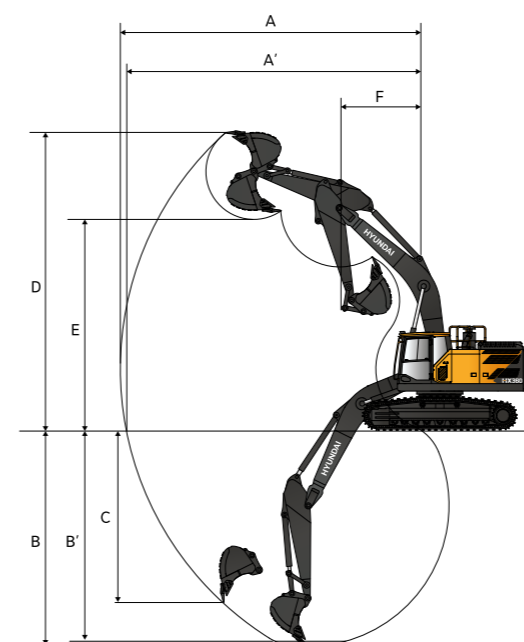


Unit : mm (ft · in)

A Tumbler Distance	4,040 (13' 3")
B Overall Length of Crawler (W/ Grouser)	4,958 (16' 3")
C Ground Clearance of Counter Weight (W/ Grouser)	1,198.5 (3' 11")
D Tail Swing Radius	3,530 (11' 7")
D' Rear-End Length	3,520 (11' 7")
E Overall Width of Upper Structure	2,990 (9' 10")
F Overall Height of Cab	3,280 (10' 9")
G Min. Ground Clearance	505 (1' 8")
H Track gauge	HX360L 2,680 (8' 10") HX360NL 2,400 (7' 10")
I Overall Height of Guardrail (W/ Grouser)	3,390 (11' 1")

Boom Length	6,200 (20' 4")	6,500 (21' 4")			2PCS 6,520 (21' 5")
	2,600 (8' 6")	2,600 (8' 6")	3,200 (10' 6")	3,950 (12' 12")	3,200 (10' 6")
Arm Length	2,600 (8' 6")	2,600 (8' 6")	3,200 (10' 6")	3,950 (12' 12")	3,200 (10' 6")
J Overall Length	11,100 (36' 5")	11,400 (37' 5")	11,310 (37' 1")	11,340 (37' 2")	11,330 (37' 2")
K Overall Height of Boom	3,790 (12' 5")	3,680 (12' 1")	3,460 (11' 4")	3,620 (11' 11")	3,650 (11' 8")
L Track Shoe Width	600 (24")	700 (28")	800 (32")	900 (36")	
M Overall Width w/o Additional Foot Board	HX360L	3,280 (10' 9")	3,380 (11' 4")	3,480 (11' 5")	3,580 (11' 9")
	HX360NL	3,000 (9' 10")	3,100 (10' 2")	3,200 (10' 6")	3,300 (10' 10")

HX360L WORKING RANGE



Unit : mm (ft · in)

Boom length	6,200 (20' 4")	6,500 (21' 4")			2PCS 6,520 (21' 5")
	2,600 (8' 6")	2,600 (8' 6")	3,200 (10' 6")	3,950 (12' 12")	3,200 (10' 6")
A Max. digging reach	10,230 (33' 7")	10,530 (34' 7")	11,115 (36' 6")	11,870 (38' 11")	11,320 (37' 2")
A' Max. digging reach on ground	10,020 (32' 10")	10,325 (33' 10")	10,920 (35' 10")	11,690 (38' 4")	11,135 (36' 6")
B Max. digging depth	6,695 (22' 0")	6,910 (22' 8")	7,510 (24' 8")	8,265 (27' 1")	7,325 (24' 0")
B' Max. digging depth (8' level)	6,475 (21' 3")	6,990 (22' 11")	7,335 (24' 1")	8,130 (26' 8")	7,230 (23' 9")
C Max. vertical wall digging depth	5,025 (16' 6")	5,025 (16' 6")	5,820 (19' 1")	6,755 (22' 2")	5,930 (19' 5")
D Max. digging height	9,545 (31' 4")	9,825 (32' 3")	10,175 (33' 5")	10,675 (35' 0")	12,350 (40' 6")
E Max. dumping height	6,610 (21' 8")	6,885 (22' 7")	7,195 (23' 7")	7,655 (25' 1")	9,085 (29' 10")
F Min. swing radius	4,323 (14' 2")	4,485 (14' 9")	4,450 (14' 7")	4,515 (14' 10")	3,440 (11' 3")

LIFTING CAPACITY

Rating over-side or 360 degree Rating over-side or 360 degree

HX360L

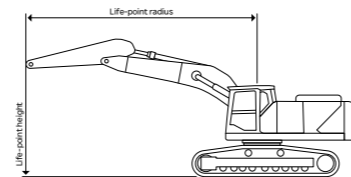
6.2m (20' 4") boom, 2.6m (8' 6") arm equipped with 600mm (24") triple grouser shoe.

Lift-point height (m/ft)	Lift-point radius										At max. reach		
	1.5m (4.9ft)		3.0m (9.8ft)		4.5m (14.8ft)		6.0m (19.7ft)		7.5m (24.6ft)		Capacity	Reach	
												m (ft)	
7.5m 24.6ft	kg lb										*9,390 20,700	9,330 20,570	6.61 (21.7)
6.0m 19.7ft	kg lb					*9,750 21,500	*9,750 21,500	*9,240 20,370	7,510 16,560		*9,240 20,370	7,310 16,120	7.61 (25.0)
4.5m 14.8ft	kg lb			*13,750 30,310	*13,750 30,310	*10,950 24,140	10,360 22,840	*9,620 21,210	7,350 16,200		*9,300 20,500	6,320 13,930	8.23 (27.0)
3.0m 9.8ft	kg lb			*17,050 37,590	14,880 32,800	*12,440 27,430	9,820 21,650	*10,300 22,710	7,100 15,650		8,760 19,310	5,840 12,870	8.53 (28.0)
1.5m 4.9ft	kg lb			*19,110 42,130	14,070 31,020	*13,680 30,160	9,370 20,660	10,450 23,040	6,860 15,120		8,580 18,920	5,680 12,520	8.56 (28.1)
0.0m 0.0ft	kg lb			*19,430 42,840	13,800 30,420	*14,270 31,460	9,110 20,080	10,280 22,660	6,710 14,790		8,850 19,510	5,830 12,850	8.32 (27.3)
-1.5m -4.9ft	kg lb		*17,760 39,150	*17,760 39,150	*18,600 41,010	13,810 30,450	*14,010 30,890	9,040 19,930	10,250 22,600	6,680 14,730	9,740 21,470	6,370 14,040	7.78 (25.5)
-3.0m -9.8ft	kg lb		*21,930 48,350	*21,930 48,350	*16,620 36,640	14,010 30,890	*12,630 27,840	9,160 20,190		*10,560 23,280	7,640 16,840	6.87 (22.5)	
-4.5m -14.8ft	kg lb		*16,480 36,330	*16,480 36,330	*12,660 27,910	*12,660 27,910					*10,260 22,620	*10,260 22,620	5.41 (17.7)

6.5m (21' 4") boom, 2.6m (8' 6") arm equipped with 600mm (24") triple grouser shoe.

Lift-point height (m/ft)	Lift-point radius										At max. reach		
	3.0m (9.8ft)		4.5m (14.8ft)		6.0m (19.7ft)		7.5m (24.6ft)		9.0m (29.5ft)		Capacity	Reach	
												m (ft)	
7.5m 24.6ft	kg lb										*8,980 19,800	8,480 18,700	7.00 (23.0)
6.0m 19.7ft	kg lb			*9,640 21,250	*9,640 21,250	*8,920 19,670	7,500 16,530				*8,850 19,510	6,780 14,950	7.95 (26.1)
4.5m 14.8ft	kg lb		*14,090 31,060	*14,090 31,060	*10,920 24,070	10,230 22,550	*9,420 20,770	7,290 16,070		8,850 19,510	5,920 13,050	8.54 (28.0)	
3.0m 9.8ft	kg lb			*12,430 27,400	9,670 21,320	*10,150 22,380	7,010 15,450				8,250 18,190	5,480 12,080	8.83 (29.0)
1.5m 4.9ft	kg lb			*13,630 30,050	9,210 20,300	10,350 22,820	6,770 14,930				8,080 17,810	5,340 11,770	8.86 (29.1)
0.0m 0.0ft	kg lb		*19,170 42,260	13,590 29,960	*14,140 31,170	8,960 19,750	10,170 22,420	6,600 14,550		8,320 18,340	5,460 12,040	8.63 (28.3)	
-1.5m -4.9ft	kg lb		*18,260 40,260	13,630 30,050	*13,880 30,600	8,900 19,620	10,130 22,330	6,570 14,480		9,080 20,020	5,930 13,070	8.11 (26.6)	
-3.0m -9.8ft	kg lb	*21,150 46,630	*21,150 46,630	*16,410 36,180	13,840 30,510	*12,660 27,910	9,010 19,860				*9,990 22,020	7,000 15,430	7.25 (23.8)
-4.5m -14.8ft	kg lb	*16,510 36,400	*16,510 36,400	*13,010 28,680	*13,010 28,680						*9,780 21,560	9,650 21,270	5.88 (19.3)

- Lifting capacity are based on ISO 10567.
- Lifting capacity does not exceed 75% of tipping load with the machine on firm, level ground or 87% of full hydraulic capacity.
- The Lift-point is bucket pivot mounting pin on the arm(without bucket mass).
- (*) indicates load limited by hydraulic capacity.



Rating over-side or 360 degree Rating over-side or 360 degree

HX360L

6.5m (21' 4") boom, 3.2m (10' 6") arm equipped with 600mm (24") triple grouser shoe.

Lift-point height (m/ft)	Lift-point radius												At max. reach			
	1.5m (4.9ft)		3.0m (9.8ft)		4.5m (14.8ft)		6.0m (19.7ft)		7.5m (24.6ft)		9.0m (29.5ft)		Capacity	Reach		
														m (ft)		
7.5m 24.6ft	kg lb												*8,030 17,700	7,660 16,890	7.73 (25.3)	
6.0m 19.7ft	kg lb												*8,160 17,990	7,580 16,710	8.60 (28.2)	
4.5m 14.8ft	kg lb					*12,570 27,710	*12,570 27,710	*10,060 22,180	*10,060 22,180	*8,780 19,360	7,340 16,180	*8,150 17,970	5,450 12,020	*7,670 16,910	5,290 11,660	9.15 (30.0)
3.0m 9.8ft	kg lb					*15,970 35,210	14,890 32,830	*11,670 25,730	9,770 21,540	*9,610 21,190	7,030 15,500	8,010 17,660	5,310 11,710	7,450 16,420	4,930 10,870	9.42 (30.9)
1.5m 4.9ft	kg lb					*18,380 40,520	13,910 30,670	*13,070 28,810	9,250 20,390	10,340 22,800	6,740 14,860	7,860 17,330	5,170 11,400	7,300 16,090	4,800 10,580	9.45 (31.0)
0.0m 0.0ft	kg lb					*19,140 42,200	13,510 29,780	*13,880 30,600	8,920 19,670	10,110 22,290	6,540 14,420	7,740 17,060	5,060 11,160	7,470 16,470	4,890 10,780	9.23 (30.3)
-1.5m -4.9ft	kg lb					*13,530 29,830	*13,530 29,830	*18,720 41,270	13,440 29,630	*13,940 30,730	8,780 19,360	10,000 22,050	6,440 14,200	8,040 17,730	5,240 11,550	8.75 (28.7)
-3.0m -9.8ft	kg lb	*16,330 36,000	*16,330 36,000	*22,040 48,590	*22,040 48,590	*17,310 38,160	13,570 29,920	*13,150 28,990	8,820 19,440	10,060 22,180	6,490 14,310			9,270 20,440	6,020 13,270	7.95 (26.1)
-4.5m -14.8ft	kg lb			*19,450 42,880	*19,450 42,880	*14,610 32,210	13,910 30,670	*11,040 24,340	9,060 19,970					*9,340 20,590	7,760 17,110	6.74 (22.1)
-6.0m -19.7ft	kg lb															

6.5m (21' 4") boom, 3.2m (10' 6") arm equipped with 700mm (28") triple grouser shoe.

Lift-point height (m/ft)	Lift-point radius												At max. reach			
	1.5m (4.9ft)		3.0m (9.8ft)		4.5m (14.8ft)		6.0m (19.7ft)		7.5m (24.6ft)		9.0m (29.5ft)		Capacity	Reach		
														m (ft)		
7.5m 24.6ft	kg lb												*8,030 17,700	7,730 17,040	7.73 (25.3)	
6.0m 19.7ft	kg lb												*8,160 17,990	7,650 16,870	8.60 (28.2)	
4.5m 14.8ft	kg lb					*12,570 27,710	*12,570 27,710	*10,060 22,180	*10,060 22,180	*8,780 19,360	7,410 16,340	*8,150 17,970	5,500 12,130	*7,670 16,910	5,350 11,790	9.15 (30.0)
3.0m 9.8ft	kg lb					*15,970 35,210	15,030 33,140	*11,670 25,730	9,860 21,740	*9,610 21,190	7,100 15,650	8,100 17,860	5,370 11,840	7,530 16,600	4,980 10,980	9.42 (30.9)
1.5m 4.9ft	kg lb					*18,380 40,520	14,050 30,970	*13,070 28,810	9,340 20,590	*10,400 22,930	6,810 15,010	7,940 17,500	5,220 11,510	7,380 16,270	4,850 10,690	9.45 (31.0)
0.0m 0.0ft	kg lb					*19,140 42,200	13,640 30,070	*13,880 30,600	9,010 19,860	10,210 22,510	6,600 14,550	7,830 17,260	5,120 11,290	7,550 16,640	4,940 10,890	9.23 (30.3)
-1.5m -4.9ft	kg lb					*13,530 29,830	*13,530 29,830	*18,720 41,270	13,570 29,920	*13,940 30,730	8,870 19,550	10,110 22,290	6,510 14,350	8,130 17,920	5,300 11,680	8.75 (28.7)
-3.0m -9.8ft	kg lb	*16,330 36,000	*16,330 36,000	*22,040 48,590	*22,040 48,590	*17,310 38,160	13,710 30,230	*13,150 28,990	8,910 19,640	*10,150 22,380	6,560 14,460			9,280 20,460	6,090 13,430	7.95 (26.1)
-4.5m -14.8ft	kg lb			*19,450 42,880	*19,450 42,880	*14,610 32,210	14,050 30,970	*11,040 24,340	9,160 20,190					*9,340 20,590	7,840 17,280	6.74 (22.1)
-6.0m -19.7ft	kg lb															

- Lifting capacity are based on ISO 10567.
- Lifting capacity does not exceed 75% of tipping load with the machine on firm, level ground or 87% of full hydraulic capacity.
- The Lift-point is bucket pivot mounting pin on the arm(without bucket mass).
- (*) indicates load limited by hydraulic capacity.

LIFTING CAPACITY

Rating over-side or 360 degree Rating over-side or 360 degree

HX360NL

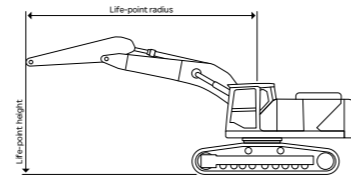
6.2m (20' 4") boom, 2.6m (8' 6") arm equipped with 600mm (24") triple grouser shoe.

Lift-point height (m/ft)	Lift-point radius										At max. reach		
	1.5m (4.9ft)		3.0m (9.8ft)		4.5m (14.8ft)		6.0m (19.7ft)		7.5m (24.6ft)		Capacity		Reach
													m (ft)
7.5m 24.6ft	kg lb										*9,390 20,700	8,360 18,430	6.61 (21.7)
6.0m 19.7ft	kg lb					*9,750 21,500	9,670 21,320	*9,240 20,370	6,720 14,820		*9,240 20,370	6,540 14,420	7.61 (25.0)
4.5m 14.8ft	kg lb			*13,750 30,310	*13,750 30,310	*10,950 24,140	9,230 20,350	*9,620 21,210	6,560 14,460		*9,300 20,500	5,640 12,430	8.23 (27.0)
3.0m 9.8ft	kg lb			*17,050 37,590	13,030 28,730	*12,440 27,430	8,710 19,200	*10,300 22,710	6,320 13,930		8,720 19,220	5,190 11,440	8.53 (28.0)
1.5m 4.9ft	kg lb			*19,110 42,130	12,260 27,030	*13,680 30,160	8,280 18,250	10,390 22,910	6,090 13,430		8,540 18,830	5,040 11,110	8.56 (28.1)
0.0m 0.0ft	kg lb			*19,430 42,840	11,990 26,430	*14,270 31,460	8,020 17,680	10,220 22,530	5,930 13,070		8,810 19,420	5,160 11,380	8.32 (27.3)
-1.5m -4.9ft	kg lb		*17,760 39,150	*17,760 39,150	*18,600 41,010	12,000 26,460	*14,010 30,890	7,950 17,530	10,190 22,470	5,910 13,030	9,690 21,360	5,640 12,430	7.78 (25.5)
-3.0m -9.8ft	kg lb		*21,930 48,350	*21,930 48,350	*16,620 36,640	12,200 26,900	*12,630 27,840	8,070 17,790		*10,560 23,280	6,760 14,900	6.87 (22.5)	
-4.5m -14.8ft	kg lb		*16,480 36,330	*16,480 36,330	*12,660 27,910	12,650 27,890				*10,260 22,620	9,740 21,470	5.41 (17.7)	

6.5m (21' 4") boom, 2.6m (8' 6") arm equipped with 600mm (24") triple grouser shoe.

Lift-point height (m/ft)	Lift-point radius										At max. reach		
	1.5m (4.9ft)		3.0m (9.8ft)		4.5m (14.8ft)		6.0m (19.7ft)		7.5m (24.6ft)		Capacity		Reach
													m (ft)
7.5m 24.6ft	kg lb										*8,980 19,800	7,600 16,760	7.00 (23.0)
6.0m 19.7ft	kg lb					*9,640 21,250	9,590 21,140	*8,920 19,670	6,710 14,790		*8,850 19,510	6,060 13,360	7.95 (26.1)
4.5m 14.8ft	kg lb		*14,090 31,060	13,930 30,710	*10,920 24,070	9,110 20,080	*9,420 20,770	6,500 14,330		8,810 19,420	5,270 11,620	8.54 (28.0)	
3.0m 9.8ft	kg lb				*12,430 27,400	8,560 18,870	*10,150 22,380	6,230 13,730		8,210 18,100	4,870 10,740	8.83 (29.0)	
1.5m 4.9ft	kg lb				*13,630 30,050	8,120 17,900	10,290 22,690	5,990 13,210		8,040 17,730	4,730 10,430	8.86 (29.1)	
0.0m 0.0ft	kg lb		*19,170 42,260	11,790 25,990	*14,140 31,170	7,880 17,370	10,120 22,310	5,830 12,850		8,270 18,230	4,830 10,650	8.63 (28.3)	
-1.5m -4.9ft	kg lb		*18,260 40,260	11,830 26,080	*13,880 30,600	7,820 17,240	10,070 22,200	5,800 12,790		9,030 19,910	5,250 11,570	8.11 (26.6)	
-3.0m -9.8ft	kg lb	*21,150 46,630	*21,150 46,630	*16,410 36,180	12,030 26,520	*12,660 27,910	7,930 17,480			*9,990 22,020	6,190 13,650	7.25 (23.8)	
-4.5m -14.8ft	kg lb	*16,510 36,400	*16,510 36,400	*13,010 28,680	12,440 27,430					*9,780 21,560	8,510 18,760	5.88 (19.3)	

- Lifting capacity are based on ISO 10567.
- Lifting capacity does not exceed 75% of tipping load with the machine on firm, level ground or 87% of full hydraulic capacity.
- The Lift-point is bucket pivot mounting pin on the arm (without bucket mass).
- (*) indicates load limited by hydraulic capacity.



Rating over-side or 360 degree Rating over-side or 360 degree

HX360NL

6.5m (21' 4") boom, 3.2m (10' 6") arm equipped with 600mm (24") triple grouser shoe.

Lift-point height (m/ft)	Lift-point radius												At max. reach			
	1.5m (4.9ft)		3.0m (9.8ft)		4.5m (14.8ft)		6.0m (19.7ft)		7.5m (24.6ft)		9.0m (29.5ft)		Capacity		Reach	
															m (ft)	
7.5m 24.6ft	kg lb												*8,030 17,700	6,870 15,150	7.73 (25.3)	
6.0m 19.7ft	kg lb												*8,160 17,990	6,790 14,970	8.60 (28.2)	
4.5m 14.8ft	kg lb					*12,570 27,710	*12,570 27,710	*10,060 22,180	9,250 20,390	*8,780 19,360	6,550 14,440	8,120 17,900	4,850 10,690	*7,670 16,910	4,710 10,380	9.15 (30.0)
3.0m 9.8ft	kg lb					*15,970 35,210	13,030 28,730	*11,670 25,730	8,660 19,090	*9,610 21,190	6,250 13,780	7,970 17,570	4,710 10,380	7,410 16,340	4,370 9,630	9.42 (30.9)
1.5m 4.9ft	kg lb					*18,380 40,520	12,100 26,680	*13,070 28,810	8,150 17,970	10,280 22,660	5,970 13,160	7,810 17,220	4,570 10,080	7,260 16,010	4,240 9,350	9.45 (31.0)
0.0m 0.0ft	kg lb					*19,140 42,200	11,710 25,820	*13,880 30,600	7,830 17,260	10,050 22,160	5,760 12,700	7,700 16,980	4,470 9,850	7,430 16,380	4,320 9,520	9.23 (30.3)
-1.5m -4.9ft	kg lb			*13,530 29,830	*13,530 29,830	*18,720 41,270	11,640 25,660	*13,940 30,730	7,700 16,980	9,950 21,940	5,670 12,500			8,000 17,640	4,630 10,210	8.75 (28.7)
-3.0m -9.8ft	kg lb	*16,330 36,000	*16,330 36,000	*22,040 48,590	*22,040 48,590	*17,310 38,160	11,770 25,950	*13,150 28,990	7,740 17,060	10,000 22,050	5,720 12,610			9,220 20,330	5,320 11,730	7.95 (26.1)
-4.5m -14.8ft	kg lb			*19,450 42,880	*19,450 42,880	*14,610 32,210	12,100 26,680	*11,040 24,340	7,970 17,570					*9,340 20,590	6,850 15,100	6.74 (22.1)
-6.0m -19.7ft	kg lb															

HX360NL (2PCS)

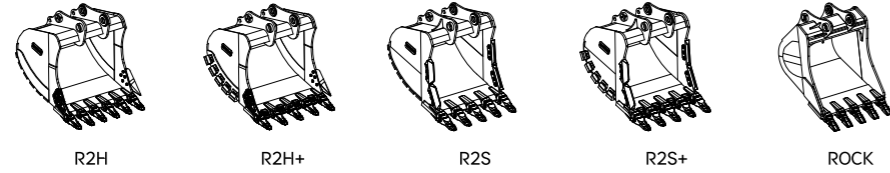
6.52m (21' 5") boom, 3.2m (10' 6") arm equipped with 600mm (24") triple grouser shoe.

Lift-point height (m/ft)	Lift-point radius										At max. reach					
	3.0m (9.8ft)		4.5m (14.8ft)		6.0m (19.7ft)		7.5m (24.6ft)		9.0m (29.5ft)		Capacity		Reach			
													m (ft)			
10.5m 34.4ft	kg lb			*10,700 23,590	*10,700 23,590							*10,190 22,470	*10,190 22,470	4.60 (15.1)		
9.0m 29.5ft	kg lb					*10,780 23,770	10,010 22,070					*8,110 17,880	*8,110 17,880	6.69 (22.0)		
7.5m 24.6ft	kg lb					*10,900 24,030	10,040 22,130	*9,610 21,190	6,800 14,990			*7,320 16,140	6,010 13,250	7.98 (26.2)		
6.0m 19.7ft	kg lb			*11,740 25,880	*11,740 25,880	*11,440 25,220	9,710 21,410	*9,700 21,380	6,710 14,790			*6,990 15,410	4,960 10,930	8.83 (29.0)		
4.5m 14.8ft	kg lb			*16,090 35,470	14,250 31,420	*12,390 27,320	9,150 20,170	*10,200 22,490	6,440 14,200	8,070 17,790	4,730 10,430			*6,910 15,230	4,380 9,660	9.36 (30.7)
3.0m 9.8ft	kg lb			*18,260 40,260	12,780 28,180	*13,360 29,450	8,490 18,720	10,550 23,260	6,110 13,470	7,910 17,440	4,580 10,100			*7,050 15,540	4,070 8,970	9.63 (31.6)
1.5m 4.9ft	kg lb			*18,050 39,790	11,740 25,880	*13,860 30,560	7,930 17,480	10,200 22,490	5,800 12,790	7,730 17,040	4,420 9,740			6,950 15,320	3,960 8,730	9.66 (31.7)
0.0m 0.0ft	kg lb			*17,860 39,370	11,340 25,000	*13,560 29,890	7,580 16,710	9,950 21,940	5,570 12,280	7,620 16,800	4,320 9,520			7,110 15,670	4,040 8,910	9.44 (31.0)
-1.5m -4.9ft	kg lb	*11,570 25,510	*11,570 25,510	*15,660 34,520	11,280 24,870	*12,350 27,230	7,440 16,400	*9,630 21,230	5,480 12,080					*6,890 15,190	4,340 9,570	8.97 (29.4)
-3.0m -9.8ft	kg lb			*12,410 27,360	11,450 25,240	*10,080 22,220	7,500 16,530	*7,540 16,620	5,550 12,240					*5,890 12,990	4,980 10,980	8.20 (26.9)
-4.5m -14.8ft	kg lb															

- Lifting capacity are based on ISO 10567.
- Lifting capacity does not exceed 75% of tipping load with the machine on firm, level ground or 87% of full hydraulic capacity.
- The Lift-point is bucket pivot mounting pin on the arm (without bucket mass).
- (*) indicates load limited by hydraulic capacity.

BUCKET SELECTION GUIDE & DIGGING FORCE

HX360 L



Type	Capacity m ³ (yd ³)		Width mm (in)	Weight kg (lb)	Tooth EA	Recommendation mm (ft-in)				
	SAE heaped	CECE heaped				6,200 (20' 4") Boom	6,500 (21' 4") Boom			2PCS 6,520 (21' 4") Boom
							2,600 (8' 6") Arm	2,600 (8' 6") Arm	3,200 (10' 6") Arm	
R2H	1.44 (1.88)	1.31 (1.71)	1,272 (50.1")	1,415 (3,120)	5	●	●	●	○	●
R2H	1.66 (2.17)	1.50 (1.96)	1,428 (56.2")	1,520 (3,350)	5	●	●	●	■	○
R2H	1.81 (2.37)	1.63 (2.13)	1,534 (60.4")	1,620 (3,570)	6	●	●	○	■	■
R2H	2.03 (2.66)	1.81 (2.37)	1,684 (66.3")	1,715 (3,780)	6	●	○	■	▲	▲
R2H	2.32 (3.03)	2.07 (2.71)	1,892 (74.5")	1,850 (4,080)	6	○	■	▲	x	▲
R2H	2.50 (3.27)	2.25 (2.94)	1,763 (69.4")	1,860 (4,100)	6	■	■	▲	-	x
R2H+	1.81 (2.37)	1.63 (2.13)	1,534 (60.4")	1,890 (4,170)	5	●	●	■	▲	■
R2H+	2.03 (2.66)	1.81 (2.37)	1,684 (66.3")	1,820 (4,010)	6	○	○	■	▲	▲
R2H+	2.32 (3.03)	2.07 (2.71)	1,892(74.5")	1,950 (4,300)	6	■	■	▲	x	▲
R2H+	2.50 (3.27)	2.25 (2.94)	1,763 (69.4")	1,960 (4,320)	6	■	■	▲	-	x
R2S	1.56 (2.04)	1.41 (1.84)	1,352 (53.2")	1,870 (4,120)	5	●	●	○	-	○
R2S	1.71 (2.24)	1.54 (2.01)	1,452 (57.2")	1,955 (4,310)	5	●	●	○	-	■
R2S	1.92 (2.51)	1.72 (2.25)	1,602 (63.1")	2,075 (4,570)	5	●	○	■	-	▲
R2S	2.22 (2.90)	1.98 (2.59)	1,809 (71.2")	2,295 (5,060)	6	■	■	▲	-	x
R2S	2.50 (3.27)	2.25 (2.94)	1,752 (69.0")	2,345 (5,170)	6	■	▲	x	-	x
R2S+	1.56 (2.04)	1.41 (1.84)	1,352 (53.2")	2,060 (4,540)	5	●	●	○	-	■
R2S+	1.71 (2.24)	1.54 (2.01)	1,452 (57.2")	2,150 (4,740)	5	●	●	■	-	■
ROCK	1.28 (1.67)	1.12 (1.46)	1,382 (54.4")	1,440 (3,170)	5	●	●	●	-	●
ROCK	1.37 (1.79)	1.19 (1.56)	1,434 (56.5")	1,465 (3,230)	5	●	●	●	-	●

- : Applicable for materials with density of 2,100 kg/m³ (3,500 lb/yd³) or less
- : Applicable for materials with density of 1,800 kg/m³ (3,000 lb/yd³) or less
- : Applicable for materials with density of 1,500 kg/m³ (2,500 lb/yd³) or less
- ▲ : Applicable for materials with density of 1,200 kg/m³ (2,000 lb/yd³) or less
- x : Not Recommended

ATTACHMENT

Booms and arms are welded with a low-stress, full-box section design.
6,200mm (20' 4"), 6,500mm (21' 4") Booms, 2PCS Boom and 2,600 (8' 6"), 3,200 (10' 6"), 3,950 (12' 12") Arms are available.
Hyundai Buckets are all-welded, high-strength steel implements.

DIGGING FORCE

Boom	Length	mm (ft.in)	6,200(20' 4")				2PCS		Remark
			6,500 (21' 4")		6,250 (21' 5")				
Arm	Length	mm (ft.in)	2,600 (8' 6")	2,600 (8' 6")	3,200 (10' 6")	3,950 (12' 12")	3,200 (10' 6")		
Bucket Digging Force	SAE	kN	219.7 (232.3)	219.5 (232.0)	219.7 (232.3)	219.7 (232.4)	219.7 (232.4)		
		kgf	22,390 (23,700)	22,370 (23,600)	22,390 (23,700)	22,390 (23,700)	22,390 (23,700)		
		lbf	49,370 (52,200)	49,320 (52,100)	49,370 (52,200)	49,370 (52,200)	49,370 (52,200)		
	ISO	kN	244.9 (258.9)	244.7 (258.7)	244.9 (258.9)	244.9 (258.9)	244.9 (258.9)		
		kgf	24,960 (26,400)	24,940 (26,400)	24,960 (26,400)	24,960 (26,400)	24,960 (26,400)		
		lbf	55,040 (58,200)	54,990 (58,100)	55,040 (58,200)	55,040 (58,200)	55,040 (58,200)		
Arm Crowd Force	SAE	kN	212.3 (224.4)	212.3 (224.4)	173.0 (182.9)	146.5 (154.9)	173.0 (182.9)	[:] Power Boost	
		kgf	21,640 (22,900)	21,640 (22,900)	17,630 (18,600)	14,930 (15,800)	17,630 (18,600)		
		lbf	47,710 (50,400)	47,710 (50,400)	38,870 (41,100)	32,920 (34,800)	38,870 (41,100)		
	ISO	kN	217.7 (230.1)	217.7 (230.1)	176.7 (186.8)	149.1 (157.6)	176.7 (186.8)		
		kgf	22,180 (23,400)	22,180 (23,400)	18,000 (19,000)	15,190 (16,100)	18,000 (19,000)		
		lbf	48,910 (51,700)	48,910 (51,700)	39,700 (42,000)	33,490 (35,400)			

Note : Boom weight includes arm cylinder, piping, and pin Arm weight includes bucket cylinder, linkage, and pin

STANDARD / OPTION

HYDRAULIC SYSTEM	STD
FULL ELECTRO HYDRAULIC (FEH)	
Variable Power Control	●
Electric Pump Flow Control	●
Electric MCV with Electric Joystick	●
Attachment Mode Flow Control	●
Engine Auto Idle	●
Engine Auto Shutdown Control	●
JOYSTICK STEERING	●
CAB & INTERIOR	
ISO STANDARD CABIN	
Cabin Light (2 Working Lamp, HAL)	
Cabin Light (2 Working Lamp, LED)	
Cabin Light (6 Working Lamp, LED)	●
Cabin Upper and Lower Guard	
Cabin Lower Guard	
Cabin Rain Shield	●
Parallel Wiper	●
Radio / MP3 (Stereo)	●
DAB Audio (Handsfree&Bluetooth)	
Electric Horn	●
Safety Glass - Tempered Glass	●
Safety Glass - Laminated Glass (front)	●
Sliding Fold-In Front Window	●
Sliding Slide Window (LH)	●
Lockable Door	●
Hot & Cool Box	●
Storage Compartment	●
Comfort Package (Premium Seat included)	
Multi Channel Speaker (4ea)	●
AUTOMATIC CLIMATE CONTROL	
Air Conditioner & Heater	●
Defroster	●
AUTOMATIC STARTING AID(AIR GRID HEATER) FOR WEATHER	
Starting Aid (Air Grid Heater) for Cold Weather	●
Engine Coolant Heater & Plug Heater(110V Plug Heater)	
Engine Coolant Heater & Plug Heater(220V Plug Heater)	
ADDITIONAL GAUGE PANEL (AGP)	
12" LCD Display	●
12" LCD Display dual (Foldable, 2ea)	
Engine Speed or Trip Meter / Accel	●
Engine Coolant Temperature Gauge	●
Max Power / Low&High Speed / Engine Check indicator	●
Auto Idle	●
Overload Warning with alarm	●
Eco Gauge / Fuel Level / Hyd. Oil Temperature Gauge	●
Air Cleaner Clogging	●
Fuel Warmer	●
Warnings	●
Communication Error	●
Low Battery / Clock	●
SEAT	
Heating & Cooling Seat	
Heating Seat	●
Premium Seat with Heating & Cooling	
CABIN FOG (ISO 1,0262) LEVEL 2	
FOG (Falling Object Guard)	Front & Top Guard
	Top Guard
CABIN ROPS (ISO 1,2117-2)	
ROPS (Roll Over Protective Structures)	●
SAFETY	
STD	
Battery Master Switcho	●
Right and Rear View Camera	●
Smart Around View Camera (SAVM)	
Travel Alarm	●
Beacon Lamp	
Automatic Swing Brake	●
Boom Holding Valve	●

- * Standard and optional equipment may vary. Contact your Hyundai dealer for more information.
- The machine may vary according to International standards.
- * The photos may include attachments and optional equipment that are not available in your area.
- * Materials and specifications are subject to change without advance notice.
- * All imperial measurements rounded off to the nearest pound or inch.

SAFETY	STD
Arm Holding Valve	●
Overload Warning Device	●
NEW TECHNOLOGY	
STD	
Machine Guidance (MG)	
Machine Guidance (MG) with 2D MG Laser Receiver	
Machine Control (MC) with Weighing/LA	
: MC and Bucket Weight Indicating with Lift Assist	
Machine Control (MC) with Weighing/ALA	
: Advanced Lift Assist (Pro) applied	
Equipment Health Monitoring (EHM) - Basic	●
Equipment Health Monitoring (EHM) - Premium	
Around Radar	
Digital Key	
Intelligence Package	
OTHERS	
STD	
Microphone	
Reversible Fan	●
Breaker Filter	
Boom Lamp (LED)	●
Pre Cleaner - Oil washed	
Fine Swing	
Straight Travel	
Hi MATE (Telematics)	●
Air Compressor	
Auto Greasing System	
Non Side Protector & Catwalk	●
Fuel Filler Pump	●
Heat Wire for mirror	
Shoe Case	
Alarm for all with White Noise	●
Double-Acting Piping with Pedal	●
Rotating Piping (PERO)	
Quick Coupler	
Quick Coupler Piping	●
Tool Kit	
BOOMS	
6.2 m, 20' 4"	
6.5m, 21' 4"	●
6.52 m, 21' 5", 2PCS	
6.5 m, 21' 4", HD (Heavy Duty)	
ARMS	
2.6 m, 8' 6"	
3.2 m, 10' 6"	●
3.95 m, 12' 12"	
2.6 m, 2PCS	
3.2 m, 2PCS	
3.95 m, 2PCS	
3.2 m, 10' 6", HD (Heavy Duty)	
3.2 m Thumb Ready Arm (w/o Lug)	
3.95 m Thumb Ready Arm (w/o Lug)	
COUNTERWEIGHT	
6.0 ton	
6.5 ton	●
7.2 ton	
UNDERCARRIAGE	
STD	
Heavy Duty Under Cover	●
Standard Under Cover	
TRACK SHOES	
600 mm Shoe	●
600 mm Double Grouser Shoe	
700 mm Shoe	
800 mm Shoe	
900 mm Shoe	
TRACK GUARD	
Normal Track Guard	●
Double Track Guard	
Full Track Guard	