

# HX235 LCR STANDARD / OPTION

ENGINE	STD	OPT
HYUNDAI HE6.7 MANUFACTURED BY CUMMINS	●	
<b>HYDRAULIC SYSTEM</b>		
<b>INTELLIGENT POWER CONTROL (IPC)</b>		
3-power mode, 2-work mode, user mode	●	
Variable Power Control	●	
Pump Flow Control	●	
Attachment Mode Flow Control		●
Engine Auto Idle	●	
Engine Auto Shutdown Control	●	
<b>CAB &amp; INTERIOR</b>		
<b>ISO STANDARD CABIN</b>		
Rise-up type windshield wiper	●	
Radio / USB player	●	
12 volt power outlet (24V DC to 12V DC converter)	●	
All-weather steel cab with 360° visibility	●	
Safety glass - Tempered Glass	●	
Safety glass - Tempered Glass with Front Laminated Glass		●
Sliding fold-in front window	●	
Sliding side window(LH)	●	
Lockable door	●	
Storage compartment & Ashtray	●	
Transparent cabin roof-cover	●	
Sun visor	●	
Door and cab locks, one key	●	
Cabin Lights		●
Cabin Front window rain Guard		●
<b>AUTOMATIC CLIMATE CONTROL</b>		
Air conditioner & heater	●	
Defroster	●	
Starting Aid (air grid heater) for cold weather	●	
<b>CENTRALIZED MONITORING</b>		
8" LCD display - Normal type	●	
8" LCD display - Premium type		●
Engine speed or Trip meter/Accel.	●	
Engine coolant temperature gauge	●	
Max power	●	
Low speed/High speed	●	
Auto idle	●	
Overload warning with alarm		●
Air cleaner clogging	●	
Indicators	●	
ECO Gauges	●	
Fuel level gauge	●	
Hyd. oil temperature gauge	●	
Fuel warmer		●
Warnings	●	
Communication error	●	
Low battery	●	
Clock	●	
LED ROOM LAMP	●	
<b>SEAT</b>		
Adjustable air suspension without heater	●	
Adjustable air suspension with heater		●
<b>CABIN FOPS (ISO 10262) LEVEL 2</b>		
FOPS (Falling Object Protective Structure) · ISO 10262 Level 2	Front & Top guard	●
	Top guard	●
<b>CABIN ROPS</b>		
ROPS (Roll Over Protective Structure) · ISO 12117-2		●

SAFETY	STD	OPT
Battery master switch	●	
Rearview camera		●
AAVM (Advanced Around View Monitoring)		●
Front working lights	●	
Travel alarm	●	
Rear work lamp		●
Beacon lamp		●
Automatic swing brake	●	
Boom holding system	●	
Arm holding system	●	
Safety lock valve for boom cylinder with overload warning device		●
Safety lock valve for arm cylinder		●
Swing Lock System		●
Handsfree mobile phone system with USB	●	
Electric horn	●	
Pilot-operated slidable joystick	●	
<b>ATTACHMENT</b>		
<b>BOOMS</b>		
5.70 m, 18' 8" mono	●	
<b>ARMS</b>		
2.00 m, 6' 7"		●
2.40 m, 7' 10"		●
2.90 m, 9' 6"	●	
<b>OTHERS</b>		
Removable clean-out dust net for cooler	●	
Removable reservoir tank	●	
Fuel warmer		●
Fuel warmer-Dual		●
Self-diagnostics system	●	
Hi MATE (Remote Management System)		●
Batteries (2 x 12V x 100 AH)	●	
Fuel filler pump (35 L/min)		●
Single-acting piping kit (breaker, etc.)		●
Double-acting piping kit (clamshell, etc.)		●
Rotating Piping Kit		●
Quick coupler piping		●
Quick coupler		●
Accumulator for lowering work equipment	●	
Pattern change valve (2 patterns)		●
Fine Swing Control System		●
General type guardrail	●	
Tool kit		●
Pre cleaner		●
<b>COUNTERWEIGHT</b>		
5.3 ton CWT	●	
<b>UNDERCARRIAGE</b>		
<b>TRACK SHOES</b>		
Triple Grousers shoe (600mm, 1'12")	●	
Triple Grousers shoe (700 mm, 24")		●
Triple Grousers shoe (800 mm, 2'7")		●
Track rail guard	●	
Full track rail guard		●

\* Standard and optional equipment may vary. Contact your Hyundai dealer for more information.  
 \* The machine may vary according to International standards.  
 \* The photos may include attachments and optional equipment that are not available in your area.  
 \* Materials and specifications are subject to change without advance notice.  
 \* All imperial measurements rounded off to the nearest pound or inch.

# HX235 LCR

With Tier 3 / Stage IIIA Engine installed



Head Office(Sales Office)  
 14F, GLOBAL R&D CENTER, 477 BUNDANG SUSEO-RO, BUNDANG-GU, SEONGNAM-SI, GYEONGGI-DO, 13553, KOREA

PLEASE CONTACT

Gross Power  
 119 kW (160 HP) at 2,200 rpm

Net Power  
 117 kW (157 HP) at 2,200 rpm

Bucket Capacity  
 0.80 ~ 1.34 m<sup>3</sup>

Operating Weight  
 24,160 kg / 53,260 lb



# RULE THE GROUND

HX Series exceeds customer's expectation!  
Become a true leader on the ground with HCE's HX series.

HX235 LCR

## WORK MAX, WORTH MAX

- IPC (Intelligent Power Control) **Upgrade**
- Attachment Flow Control **Option**
- New Variable Power Control
- Fuel Rate Information
- ECO Gauge
- New Cooling System with Increased Air Flow
- Enlarged Air Inlet with Grill Cover

## MORE RELIABLE, MORE SUSTAINABLE

- Durable Cooling Module
- Reinforced Pin, Bush and Polymer Shim
- Reinforced Durability of Upper and Lower Structure and Attachments
- Wear Resistant Cover Plate
- Hi-grade (High-pressure) Hoses

## INFOTAINMENT FRONTIER

- Proportional Auxiliary Hydraulic System **Option**
- Intelligent & Wide Cluster
- Quick Coupler Button
- Audio System **Option**
- New Front Side Air-conditioning System

## SERVICEABILITY AND TELEMATICS

- AAVM(Advanced Around View Monitoring) Camera System **Option**
- Hi MATE (Remote Management System) **Option**
- Swing Lock System **Option**
- Fine Swing Control **Option**



## IPC (Intelligent Power Control)

Upgrade

HX-LT3 Series adopts the upgraded IPC system. It is able to optimize pump flow rate and power at the various working condition through the individual pump control. Furthermore, optimized design of MCV and pipe line minimizes energy loss such as conflux and throttle loss.



## Attachment Flow Control Option

HX Series improves pump flow rate by independent control of two pumps. It optimizes attachments for effective flow rate setting depending on attachments (ten breaker types and ten crusher types), enabling various operations matching the site environments.

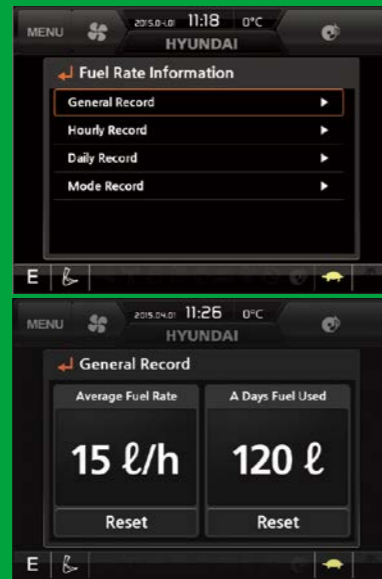


## Eco Gauge

Eco gauge enables economic operation of machines. The gauge level and color displays engine torque and fuel efficiency level. On top of that, the status of fuel consumption such as average rate and the total amount of fuel consumed is displayed. Hourly and daily based fuel consumption can be checked in the detailed menu as well.



## Fuel Rate Information



## New Cooling System with Increased Air Flow

With new 1 layer cooling module. New machine has more effective cooling performance by increasing heat dissipation and can be easily cleaned.



## Enlarged Air Inlet with Grill Cover

Enlarged vent hole of the air inlet side cover and fine net grill to prevent penetration of foreign materials further improve durability.



## New Variable Power Control

HX Series minimizes equipment input and output control signals to improve fuel efficiency. Its three-stage power mode ensures the highest performance in any operating environment.



\* P(power) mode : Maximizes speed and power of the equipment for heavy load work.



\* S(standard) mode : Optimizes performance and fuel efficiency of the equipment for general load work.



\* E(economy) mode : Improves the control system for light load work.

## BETTER FUEL-EFFICIENCY (Compared to 9 Series)



# WORK MAX, WORTH MAX

## Fuel Efficient System Allows Great Performance

HX Series has an eco-friendly, high-performance engine which ensures both excellent fuel efficiency and high power. With outstanding operating performance proven by rigorous tests at various work sites, it will satisfy any customer's needs.

\* Photo may include optional equipment.



# MORE RELIABLE, MORE SUSTAINABLE

New Exterior Design for Robustness and Safety

The true value of HX Series lies in its durability.

The robust frame structure and the attachments show the real value of HX Series in tough working environments and promise higher productivity.



We make the best performance in rough working conditions without any unsureness with trustworthy HX235LCR.



## Durable Cooling Module

HX Series has a durable cooling module that passed stringent tests, demonstrating the highest productivity in tough working environments.

## Reinforced Durability of Upper and Lower Structure and Attachments

The upper and lower structure and attachments of HX Series have higher durability than demanded on the site, as proven through numerous tests including road tests and virtual simulation. The wear resistance of the bucket has been improved by use of new material.



## Reinforced Pins, Bushing, and Polymer Shims

HX Series improves lubricity of connecting parts between the equipment and attachments. Gaps with attachments are minimized by wear-resistant long-life pins, bushes, and polymer shims, supporting the highest performance with invariable durability.

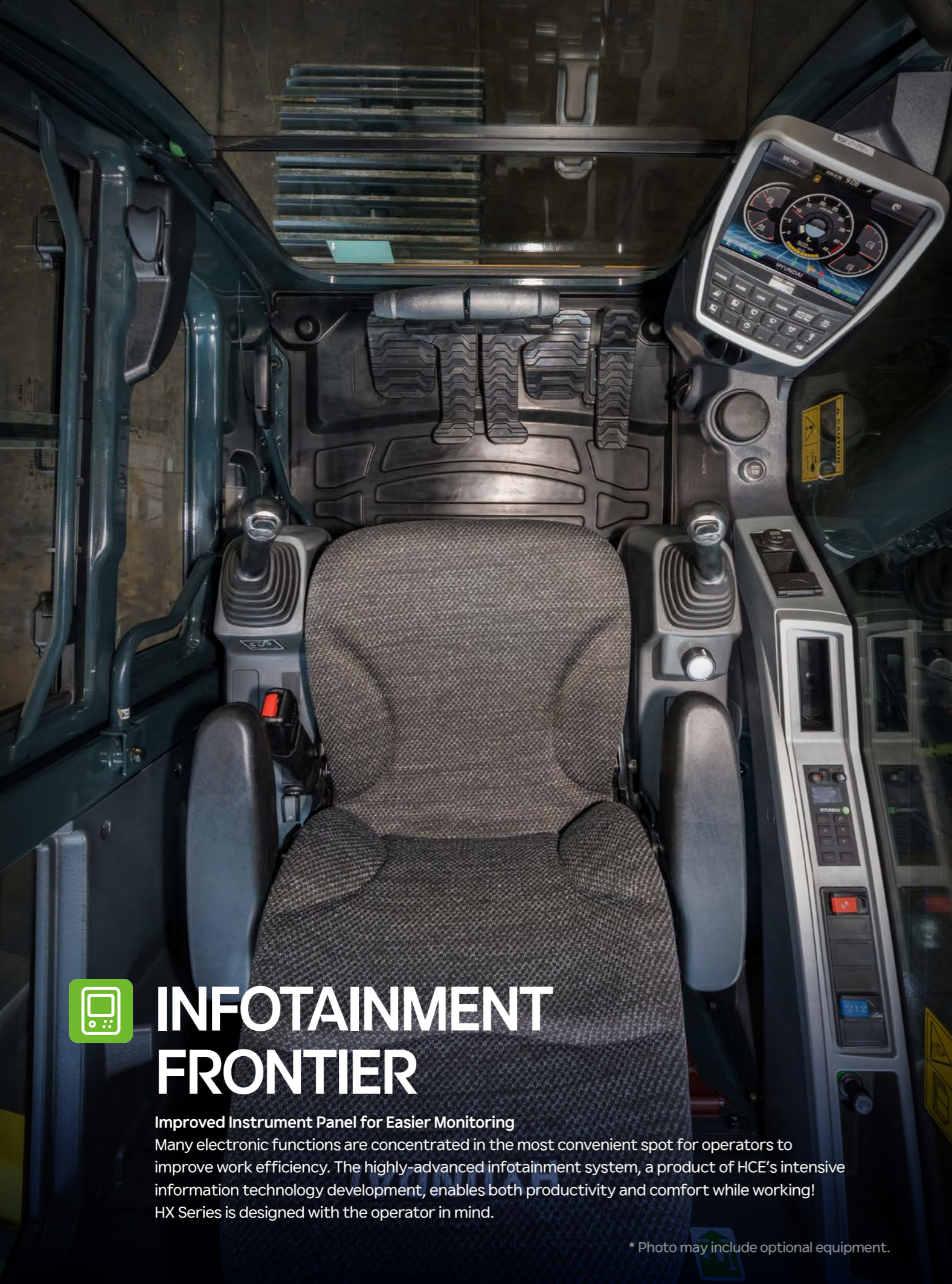


## Wear Resistant Cover Plate

A wear-resistant cover plate is installed at the end of the arm to minimize abrasion on the connector between the arm and the bucket. Vibration reduction of buckets enables more stable operation even in high-load work.

## Hi-grade (High-pressure) Hoses

HX Series uses high-pressure hoses with improved heat and pressure resistance, greatly increasing the durability of the equipment.



# INFOTAINMENT FRONTIER

## Improved Instrument Panel for Easier Monitoring

Many electronic functions are concentrated in the most convenient spot for operators to improve work efficiency. The highly-advanced infotainment system, a product of HCE's intensive information technology development, enables both productivity and comfort while working! HX Series is designed with the operator in mind.

\* Photo may include optional equipment.

## New Front Side Air-conditioning System

The ventilation is designed for both warm and cool air reaching to operators' faces. It could help operators create more neat and enjoyable atmosphere through indoor air circulation.



## Audio System

Radio player, USB-based MP3 player, integrated Bluetooth hands-free feature, and built-in microphone allow convenient phone calls while in work and in transit. The radio player was moved to the right side from the rear, allowing easier access.



## Quick Coupler Button Option

Easy attachment replacement of equipment is available with quick coupler button.



## Proportional Auxiliary Hydraulic System Option

Proportional control switch with better speed control helps operators to enlarge the operation convenience whenever they do time-consuming work. And this function can be switched with pedal valve in cluster setting menu.



## Intelligent and Wide Cluster

The 8" capacitive-type display (like smartphone display) of HX Series is 15% larger than the previous model, delivering excellent legibility. The centralized switches on the display allow convenience of checking the urea level and temperature outside the cabin. The audio AUX, air conditioner, heater interoperation wiper, lamp, overload warning, travel, alarm and inclination sensor also maximize operator's convenience.





# SERVICEABILITY AND TELENATICS

IoT, ICT, AI-based digital technologies is creating smart construction sites. Maximizes connectivity, productivity and safety for your successful businesses.



## Hi MATE

Option

### IT'S CONVENIENT, EASY AND VALUABLE

Hi MATE Hyundai's newly developed remote management system, utilizes GPS-satellite technology to provide customers with the highest level of service and product support available. Hi MATE enables users to remotely evaluate machine performance, access diagnostic information, and verify machine locations at the touch of a button.

### WHAT IS BENEFITS



#### Increase Productivity

It helps you operate machines in efficient. You can check the difference between total engine hours and actual working hours. See how productive your machines are and plan any required cost saving solutions. Hi MATE offers working information such as working / idling hours, fuel consumption and rate.



#### Convenient and Easy Monitoring

There is nothing much to do to monitor your machines. Just log on to the Hi MATE website or mobile application. Hi MATE allows you to watch your machines whenever and wherever you are.



#### Security

Protect your machines from theft or unauthorized usage with Hi MATE. If the machine moves out of the Geofence boundary, you will get alerts.



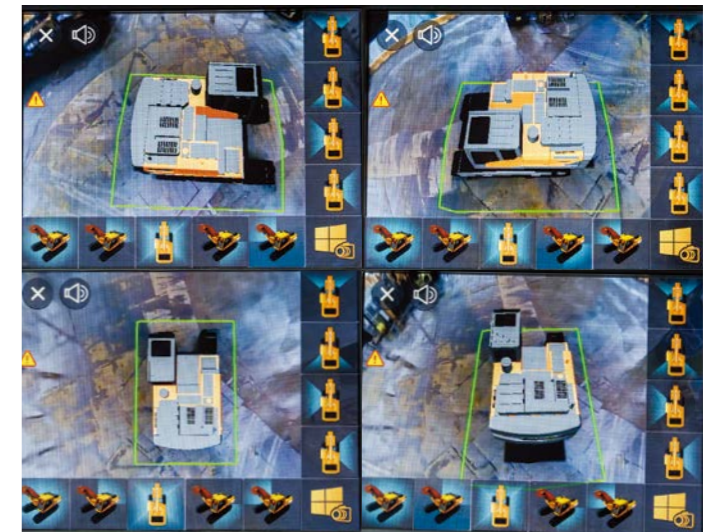
## HX235LCR with advanced technology ensures our safety on a construction site.

HX Series excavators are products of HCE's spirit of initiative, creativity, and strong drive. HCE engineers, who are the best in the industry, have worked tirelessly to offer a zero-defect product. The new HX Series reflects customers' needs in the field gleaned by thorough monitoring.

### AAVM(Advanced Around View Monitoring) Camera System Option

HX Series has a state-of-the-art AAVM video camera system to secure field of vision for operators in all directions, thereby preventing accidents. Operators can easily check the workplace in the front and rear and to the right and left.

- **AAVM**(Advanced Around View Monitoring)  
Secure field of vision in all directions by nine views including 3D bird's eye view and 2D/4CH view.
- **IMOD**(Intelligent Moving Object Detection)  
Inform when people or dangerous objects are detected within the range of operation(recognition distance : 5 m).



### Swing Lock System Option

Swing lock system is provided to maintain stability when swing movement needs to be limited, improving operating speed and productivity.

### Fine Swing Control Option

# HX235 LCR SPECIFICATIONS

ENGINE	
Maker / Model	HYUNDAI HE6.7 MANUFACTURED BY CUMMINS
Type	6 cylinder, water cooled, 4-cycle, turbocharged charge air cooled, direct injection, electronic controlled diesel engine
Gross Power	119 kW (160 HP) at 2,200 rpm
Net Power	117 kW (157 HP) at 2,200 rpm
Max. Power	123 kW (165 HP) at 2,000 rpm
Peak Torque	732 N . m (540 lb . ft) at 1,400 rpm
Displacement	6.7 l (408cu in)

HYDRAULIC SYSTEM	
<b>MAIN PUMP</b>	
Type	Variable displacement tandem axis piston pumps
Max. flow	2 x 221 L/min (58.4 US gpm / 48.6 UK gpm)
Sub-pump for pilot circuit	Gear pump

Cross-sensing and fuel saving pump system.

HYDRAULIC MOTORS	
Travel	Two speed axial pistons motor with brake valve and parking brake
Swing	Axial piston motor with automatic brake

RELIEF VALVE SETTING	
Implement circuits	350 kgf/cm <sup>2</sup> (4,980 psi)
Travel	350 kgf/cm <sup>2</sup> (4,980 psi)
Power boost (boom, arm, bucket)	380 kgf/cm <sup>2</sup> (5,410 psi)
Swing circuit	285 kgf/cm <sup>2</sup> (4,050 psi)
Pilot circuit	40 kgf/cm <sup>2</sup> (570 psi)
Service valve	Installed

HYDRAULIC CYLINDERS	
No. of cylinder bore X stroke	Boom : 2-120 X 1,290 mm
	Arm : 1-140 X 1,443 mm
	Bucket : 1-120 X 1,060 mm

DRIVES & BRAKES	
Drive method	Fully hydrostatic type
Drive motor	Axial piston motor, in-shoe design
Reduction system	Planetary reduction gear
Max. drawbar pull	22,194kgf (48,929 lbf)
Max. travel speed (high / low)	5.6 km/hr (3.5mph) / 3.2 km/hr (2.0mph)
Gradeability	35° (70 %)
Parking brake	Multi wet disc

CONTROL	
Pilot pressure operated joysticks and pedals with detachable lever provide almost effortless and fatigueless operation.	
Pilot control	Two joysticks with one safety lever (LH): Swing and arm, (RH): Boom and bucket (ISO)
Traveling and steering	Two levers with pedals
Engine throttle	Electric, Dial type

SWING SYSTEM	
Swing motor	Fixed displacement axial piston motor
Swing reduction	Planetary gear reduction
Swing bearing lubrication	Grease-bathed
Swing brake	Multi wet disc
Swing speed	11.3 rpm

SERVICE CAPACITIES			
	liter	US gal	UK gal
Fuel tank	320.0	84.5	70.4
Engine coolant	35.0	9.2	7.7
Engine oil	24.0	6.3	5.3
Swing device - gear oil	7.0	1.8	1.5
Final drive (each) - gear oil	4.5	1.2	1.0
Hydraulic system (including tank)	330.0	87.2	72.6
Hydraulic tank	160.0	42.3	35.2

UNDERCARRIAGE	
The X-leg type center frame is integrally welded with reinforced box-section track frames. The undercarriage includes lubricated rollers, idlers, track adjusters with shock absorbing springs and sprockets, and a track chain with double or triple grouser shoes.	
Center frame	X - leg type
Track frame	Pentagonal box type
No. of shoes on each side	49 EA
No. of carrier roller on each side	2 EA
No. of track roller on each side	8 EA
No. of rail guard on each side	2 EA

OPERATING WEIGHT (APPROXIMATE)	
Operating weight, including 5,700 mm (18' 8") boom, 2,900 mm (9' 6") arm, SAE heaped 0.92 m <sup>3</sup> (1.2 yd <sup>3</sup> ) bucket, lubricant, coolant, full fuel tank, full hydraulic tank, and all standard equipments.	

OPERATING WEIGHT		Ground pressure			
Shoes	Operating weight	kg (lb)	kgf/cm <sup>2</sup> (psi)		
Type	Width mm (in)	HX235LCR	24,160	0.51 (7.31)	
			HX235LCR (With Dozer)	25,630	0.55 (7.76)
	Triple grouser	600 (24")	HX235LCR	24,460	0.45 (6.35)
			HX235LCR (With Dozer)	25,940	0.47 (6.73)
		700 (28")	HX235LCR	24,740	0.40 (5.62)
			HX235LCR (With Dozer)	26,240	0.42 (5.96)

# HX235 LCR BUCKET SELECTION GUIDE & DIGGING FORCE

## BUCKETS

All buckets are welded with high-strength steel.



SAE heaped m <sup>3</sup> (yd <sup>3</sup> )	⊙ 0.81 (1.06)	◆ 0.92 (1.20)	★ 0.91 (1.19)
	⊙ 0.92 (1.20)	◆ 1.08 (1.41)	★ 0.87 (1.14)
	⊙ 1.05 (1.37)		
	⊙ 1.28 (1.67)		

Capacity m <sup>3</sup> (yd <sup>3</sup> )		Width mm (in)		Weight kg (lb)	Tooth (EA)	Recommendation mm (ft.in)		
						5,700 (18' 8") Boom		
						2,000 (6' 7") Arm	2,400 (7' 10") Arm	2,900 (9' 6") Arm
⊙ 0.81 (1.06)	CECE Heaped 0.72 (0.94)	Without Side Cutters 975 (38.4")	With Side Cutters 1,125 (44.3")	700 (1,540)	5	●	●	●
⊙ 0.92 (1.20)	0.81 (1.06)	1,085 (42.7")	1,230 (48.4")	750 (1,650)	5	●	●	●
⊙ 1.05 (1.37)	0.96 (1.26)	1,220 (48.0")	1,370 (53.9")	790 (1,740)	5	●	●	●
⊙ 1.28 (1.67)	1.11 (1.45)	1,455 (57.3")	1,605 (63.2")	885 (1,950)	6	●	■	▲
◆ 0.92 (1.20)	0.83 (1.09)	1,050 (41.3")	1,095 (43.1")	865 (1,910)	5	●	●	●
◆ 1.08 (1.41)	0.97 (1.27)	1,200 (47.2")	1,245 (49.0")	935 (2,060)	5	●	●	■
★ 0.91 (1.19)	0.83 (1.09)	1,050 (41.3")	1,095 (43.1")	1,050 (2,310)	4	●	●	●
★ 0.87 (1.14)	0.75 (0.98)	1,150 (45.3")	-	875 (1,930)	5	●	●	●

- ⊙ General Purpose
- ◆ Heavy duty bucket
- ◆ Rock-Heavy duty bucket
- ★ Long reach bucket

- : Applicable for materials with density of 2,100 kg/m<sup>3</sup> (3,500 lb/yd<sup>3</sup>) or less
- : Applicable for materials with density of 1,800 kg/m<sup>3</sup> (3,000 lb/yd<sup>3</sup>) or less
- : Applicable for materials with density of 1,500 kg/m<sup>3</sup> (2,500 lb/yd<sup>3</sup>) or less
- ▲ : Applicable for materials with density of 1,200 kg/m<sup>3</sup> (2,000 lb/yd<sup>3</sup>) or less
- : Not Recommended

## ATTACHMENT

Booms and arms are welded with a low-stress, full-box section design. 5.70 m Boom and 2.0 m, 2.4 m, 2.9 m Arms are available.

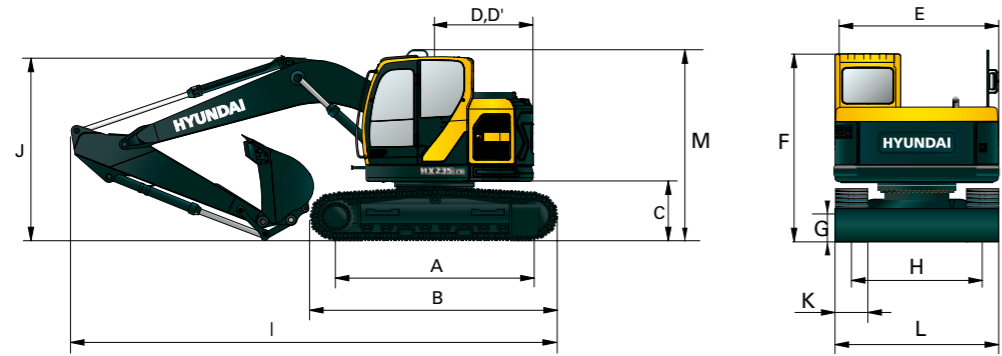
DIGGING FORCE		5,700 (18' 8")			Remarks
Boom	Length mm (ft-in)	Weight kg (lb)			
Arm	Length mm (ft-in)	2,000 (6' 7")	2,400 (7' 10")	2,900 (9' 6")	[ ] : Power Boost
	Weight kg (lb)	820 (1,810)	900 (1,980)	985 (2,170)	
Bucket digging force	SAE	kN	130.4 [141.6]	130.4 [141.6]	
		kgf	13,300 [14,440]	13,300 [14,440]	
		lbf	29,320 [31,830]	29,320 [31,830]	
	ISO	kN	152.3 [165.3]	152.3 [165.3]	
		kgf	15,530 [16,860]	15,530 [16,860]	
		lbf	34,240 [37,170]	34,240 [37,170]	
Arm crowd force	SAE	kN	144.3 [156.6]	119.3 [129.4]	
		kgf	14,710 [15,960]	12,200 [13,250]	
		lbf	32,430 [35,210]	26,810 [29,100]	
	ISO	kN	152.0 [165.0]	124.7 [135.4]	
		kgf	15,500 [16,830]	12,720 [13,810]	
		lbf	34,170 [37,100]	28,040 [30,450]	

Note : Boom weight includes arm cylinder, piping, and pin  
Arm weight includes bucket cylinder, linkage, and pin

# DIMENSIONS & WORKING RANGE

## HX235 LCR MONO BOOM DIMENSIONS

5.70 m (18' 8") BOOM and 2.0 m (6' 7"), 2.4 m (7' 10"), 2.9 m (9' 6") ARM



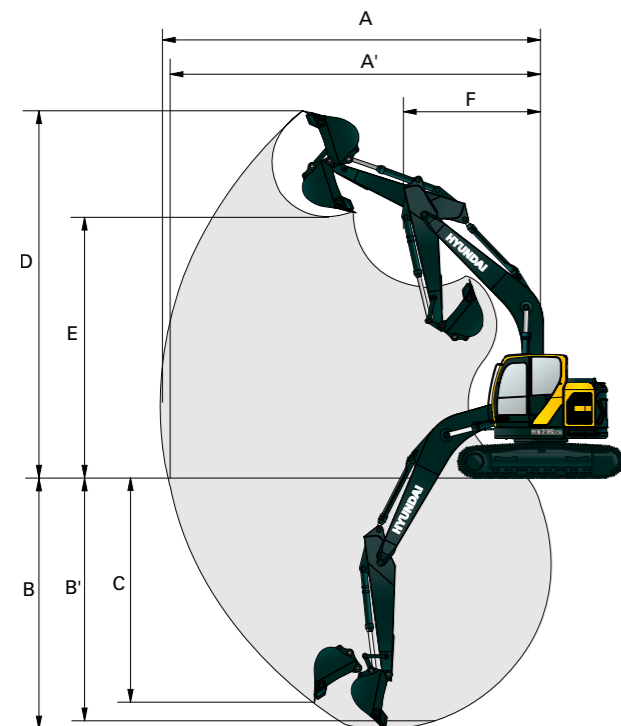
Unit : mm (ft. - in)

A	Tumbler distance	3,650 (11' 12")
*B	Overall length of crawler	4,443 (14' 7")
C	Ground clearance of counterweight	1,115 (3' 8")
D	Tail swing radius	1,780 (5' 10")
D'	Rear-end length	1,780 (5' 10")
E	Overall width of upperstructure	2,980 (9' 9")
F	Overall height of cab	3,195 (10' 6")
G	Min. ground clearance	470 (1' 7")
H	Track gauge	2,390 (7' 10")
M	Overall height of guardrail	3,450 (11' 4")

Boom length	5,700 (18' 8")		
Arm length	2,000 (6' 7")	2,400 (7' 10")	2,900 (9' 6")
I Overall length	8,975 (29' 5")	8,935 (29' 4")	8,910 (29' 3")
J Overall height of boom	3,135 (10' 3")	3,055 (10' 0")	2,975 (9' 9")
K Track shoe width	600 (1' 12")	700 (2' 4")	800 (2' 7")
L Overall width	2,990 (9' 10")	3,090 (10' 2")	3,190 (10' 6")

\* This figure includes the size of grousers.

## HX235 LCR MONO BOOM WORKING RANGE

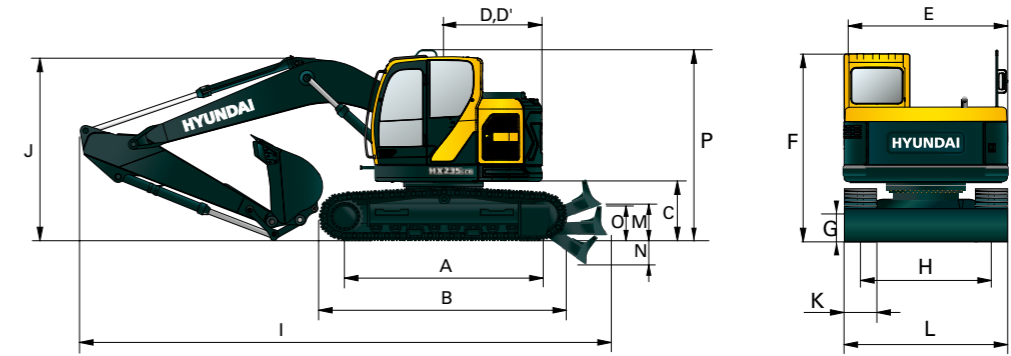


Unit : mm (ft. - in)

Boom length	5,700 (18' 8")		
Arm length	2,000 (6' 7")	2,400 (7' 10")	2,900 (9' 6")
A Max. digging reach	9,070 (29' 9")	9,455 (31' 0")	9,880 (32' 5")
A' Max. digging reach on ground	8,890 (29' 2")	9,280 (30' 5")	9,710 (31' 10")
B Max. digging depth	5,480 (18' 0")	5,880 (19' 3")	6,380 (20' 11")
B' Max. digging depth (8' level)	5,255 (17' 3")	5,680 (18' 8")	6,210 (20' 4")
C Max. vertical wall digging depth	4,950 (16' 3")	5,320 (17' 5")	5,840 (19' 2")
D Max. digging height	10,345 (33' 11")	10,670 (35' 0")	10,940 (35' 11")
E Max. dumping height	7,440 (24' 5")	7,760 (25' 6")	8,045 (26' 5")
F Min. swing radius	2,750 (9' 0")	2,480 (8' 2")	2,290 (7' 6")

## HX235 LCR MONO BOOM DOZER TYPE DIMENSIONS

5.70 m (18' 8") BOOM and 2.0 m (6' 7"), 2.4 m (7' 10"), 2.9 m (9' 6") ARM



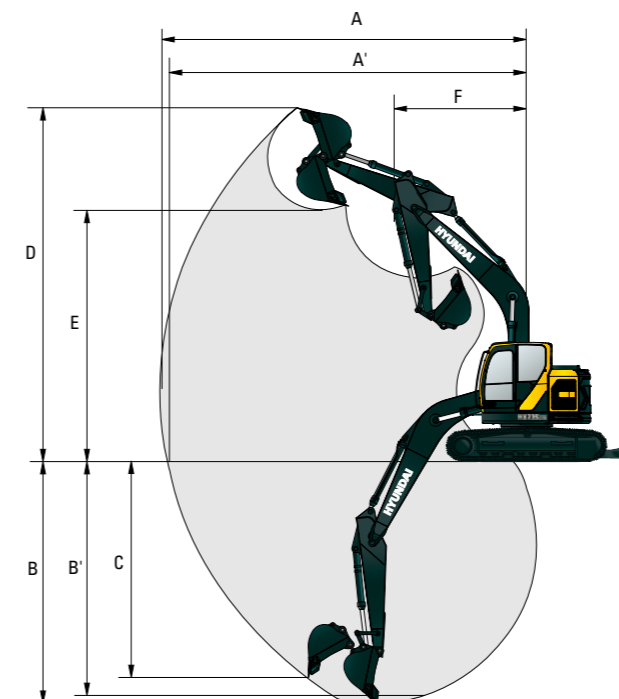
Unit : mm (ft. - in)

A	Tumbler distance	3,650 (11' 12")
*B	Overall length of crawler	4,443 (14' 7")
C	Ground clearance of counterweight	1,115 (3' 8")
D	Tail swing radius	1,780 (5' 10")
D'	Rear-end length	1,780 (5' 10")
E	Overall width of upperstructure	2,980 (9' 9")
F	Overall height of cab	3,195 (10' 6")
G	Min. ground clearance	420 (1' 5")
H	Track gauge	2,390 (7' 10")
M	Ground clearance of blade up	545 (1' 9")
N	Depth of blade down	360 (1' 2")
O	Height of blade	690 (2' 3")
P	Overall height of guardrail	3,450 (11' 4")

Boom length	5,700 (18' 8")		
Arm length	2,000 (6' 7")	2,400 (7' 10")	2,900 (9' 6")
I Overall length	9,925 (32' 7")	9,880 (32' 5")	9,855 (32' 4")
J Overall height of boom	3,135 (10' 3")	3,055 (10' 0")	2,975 (9' 9")
K Track shoe width	600 (1' 12")	700 (2' 4")	800 (2' 7")
L Overall width	2,990 (9' 10")	3,090 (10' 2")	3,190 (10' 6")

\* This figure includes the size of grousers.

## HX235 LCR MONO BOOM DOZER TYPE WORKING RANGE



Unit : mm (ft. - in)

Boom length	5,700 (18' 8")		
Arm length	2,000 (6' 7")	2,400 (7' 10")	2,900 (9' 6")
A Max. digging reach	9,070 (29' 9")	9,455 (31' 0")	9,880 (32' 5")
A' Max. digging reach on ground	8,890 (29' 2")	9,280 (30' 5")	9,710 (31' 10")
B Max. digging depth	5,480 (18' 0")	5,880 (19' 3")	6,380 (20' 11")
B' Max. digging depth (8' level)	5,255 (17' 3")	5,680 (18' 8")	6,210 (20' 4")
C Max. vertical wall digging depth	4,950 (16' 3")	5,320 (17' 5")	5,840 (19' 2")
D Max. digging height	10,345 (33' 11")	10,670 (35' 0")	10,940 (35' 11")
E Max. dumping height	7,440 (24' 5")	7,760 (25' 6")	8,045 (26' 5")
F Min. swing radius	2,750 (9' 0")	2,480 (8' 2")	2,290 (7' 6")

# LIFTING CAPACITY

Rating over-front Rating over-side or 360 degree

## HX235 LCR

Boom 5.70 m (18' 8") / Arm 2.00 m (6' 7") / CWT 5,300 kg (11,684 lb) / Shoe 600 mm (24") triple grouser / Without Dozer

Load point height m (ft)		Load radius								At max. reach		
		3.0 m (9.8 ft)		4.5 m (14.8 ft)		6.0 m (19.7 ft)		7.5 m (24.6 ft)		Capacity		Reach
												m (ft)
7.5m	kg			*6,470	*6,470					*6,420	*6,420	4.98
24.6ft	lb			*14,260	*14,260					*14,150	*14,150	(16.3)
6.0m	kg	*8,080	*8,080	*6,570	*6,570	*5,880	4,920			*5,830	4,500	6.32
19.7ft	lb	*17,810	*17,810	*14,480	*14,480	*12,960	10,850			*12,850	9,920	(20.7)
4.5m	kg			*7,520	7,440	*6,120	4,800			*5,610	3,670	7.10
14.8ft	lb			*16,580	16,400	*13,490	10,580			*12,370	8,090	(23.3)
3.0m	kg			*8,790	6,900	*6,610	4,590	5,320	3,300	5,310	3,290	7.51
9.8ft	lb			*19,380	15,210	*14,570	10,120	11,730	7,280	11,710	7,250	(24.6)
1.5m	kg					*6,980	4,400	5,240	3,230	5,140	3,170	7.60
4.9ft	lb					*15,390	9,700	11,550	7,120	11,330	6,990	(24.9)
0.0m	kg			*9,310	6,380	*6,970	4,280			5,310	3,250	7.39
0.0ft	lb			*20,530	14,070	*15,370	9,440			11,710	7,170	(24.2)
-1.5m	kg			*8,420	6,400	*6,390	4,270			*5,260	3,610	6.84
-4.9ft	lb			*18,560	14,110	*14,090	9,410			*11,600	7,960	(22.5)
-3.0m	kg	*8,160	*8,160	*6,710	6,540					*4,810	4,530	5.87
-9.8ft	lb	*17,990	*17,990	*14,790	14,420					*10,600	9,990	(19.3)

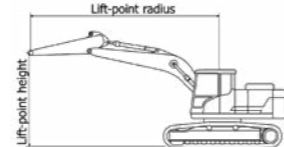
Boom 5.70 m (18' 8") / Arm 2.00 m (6' 7") / CWT 5,300 kg (11,684 lb) / Shoe 600 mm (24") triple grouser / Dozer Up

Load point height m (ft)		Load radius								At max. reach		
		3.0 m (9.8 ft)		4.5 m (14.8 ft)		6.0 m (19.7 ft)		7.5 m (24.6 ft)		Capacity		Reach
												m (ft)
7.5m	kg			*6,470	*6,470					*6,420	*6,420	4.98
24.6ft	lb			*14,260	*14,260					*14,150	*14,150	(16.3)
6.0m	kg	*8,080	*8,080	*6,570	*6,570	*5,880	5,210			*5,830	4,770	6.32
19.7ft	lb	*17,810	*17,810	*14,480	*14,480	*12,960	11,490			*12,850	10,520	(20.7)
4.5m	kg			*7,520	*7,520	*6,120	5,090			*5,610	3,910	7.10
14.8ft	lb			*16,580	*16,580	*13,490	11,220			*12,370	8,620	(23.3)
3.0m	kg			*8,790	7,340	*6,610	4,880	5,260	3,520	5,250	3,520	7.51
9.8ft	lb			*19,380	16,180	*14,570	10,760	11,600	7,760	11,570	7,760	(24.6)
1.5m	kg					*6,980	4,690	5,180	3,450	5,080	3,390	7.60
4.9ft	lb					*15,390	10,340	11,420	7,610	11,200	7,470	(24.9)
0.0m	kg			*9,310	6,820	*6,970	4,580			5,250	3,480	7.39
0.0ft	lb			*20,530	15,040	*15,370	10,100			11,570	7,670	(24.2)
-1.5m	kg			*8,420	6,830	*6,390	4,570			*5,260	3,860	6.84
-4.9ft	lb			*18,560	15,060	*14,090	10,080			*11,600	8,510	(22.5)
-3.0m	kg	*8,160	*8,160	*6,710	*6,710					*4,810	*4,810	5.87
-9.8ft	lb	*17,990	*17,990	*14,790	*14,790					*10,600	*10,600	(19.3)

Boom 5.70 m (18' 8") / Arm 2.00 m (6' 7") / CWT 5,300 kg (11,684 lb) / Shoe 600 mm (24") triple grouser / Dozer Down

Load point height m (ft)		Load radius								At max. reach		
		3.0 m (9.8 ft)		4.5 m (14.8 ft)		6.0 m (19.7 ft)		7.5 m (24.6 ft)		Capacity		Reach
												m (ft)
7.5m	kg			*6,470	*6,470					*6,420	*6,420	4.98
24.6ft	lb			*14,260	*14,260					*14,150	*14,150	(16.3)
6.0m	kg	*8,080	*8,080	*6,570	*6,570	*5,880	5,610			*5,830	5,140	6.32
19.7ft	lb	*17,810	*17,810	*14,480	*14,480	*12,960	12,370			*12,850	11,330	(20.7)
4.5m	kg			*7,520	*7,520	*6,120	5,490			*5,610	4,220	7.10
14.8ft	lb			*16,580	*16,580	*13,490	12,100			*12,370	9,300	(23.3)
3.0m	kg			*8,790	7,980	*6,610	5,280	*5,520	3,800	*5,520	3,800	7.51
9.8ft	lb			*19,380	17,590	*14,570	11,640	*12,170	8,380	*12,170	8,380	(24.6)
1.5m	kg					*6,980	5,080	*5,560	3,730	*5,470	3,660	7.60
4.9ft	lb					*15,390	11,200	*12,260	8,220	*12,060	8,070	(24.9)
0.0m	kg			*9,310	7,450	*6,970	4,970			*5,410	3,770	7.39
0.0ft	lb			*20,530	16,420	*15,370	10,960			*11,930	8,310	(24.2)
-1.5m	kg			*8,420	7,470	*6,390	4,960			*5,260	4,180	6.84
-4.9ft	lb			*18,560	16,470	*14,090	10,930			*11,600	9,220	(22.5)
-3.0m	kg	*8,160	*8,160	*6,710	*6,710					*4,810	*4,810	5.87
-9.8ft	lb	*17,990	*17,990	*14,790	*14,790					*10,600	*10,600	(19.3)

- Lifting capacity are based on ISO 10567.
- Lifting capacity of the HX A Series does not exceed 75% of tipping load with the machine on firm, level ground or 87% of full hydraulic capacity.
- The Lift-point is bucket pivot mounting pin on the arm (without bucket mass).
- (\*) indicates load limited by hydraulic capacity.



Rating over-front Rating over-side or 360 degree

## HX235 LCR

Boom 5.70 m (18' 8") / Arm 2.4 m (7' 10") / CWT 5,300 kg (11,684 lb) / Shoe 600 mm (24") triple grouser / Without Dozer

Load point height m (ft)		Load radius								At max. reach				
		3.0 m (9.8 ft)		4.5 m (14.8 ft)		6.0 m (19.7 ft)		7.5 m (24.6 ft)		Capacity		Reach		
												m (ft)		
9.0m	kg	*7,630	*7,630									*7,480	*7,480	3.32
29.5ft	lb	*16,820	*16,820									*16,490	*16,490	(10.9)
7.5m	kg			*5,900	*5,900							*5,810	*5,810	5.55
24.6ft	lb			*13,010	*13,010							*12,810	*12,810	(18.2)
6.0m	kg			*6,100	*6,100	*5,500	4,970					*5,390	4,030	6.78
19.7ft	lb			*13,450	*13,450	*12,130	10,960					*11,880	8,880	(22.2)
4.5m	kg	*9,960	*9,960	*7,070	*7,070	*5,830	4,820	*5,230	3,370	*5,230	3,350	7.51		
14.8ft	lb	*21,960	*21,960	*15,590	*15,590	*12,850	10,630	*11,530	7,430	*11,530	7,390	(24.7)		
3.0m	kg			*8,400	6,980	*6,380	4,600	5,320	3,290	4,900	3,030	7.90		
9.8ft	lb			*18,520	15,390	*14,070	10,140	11,730	7,250	10,800	6,680	(25.9)		
1.5m	kg			*9,320	6,540	*6,830	4,380	5,210	3,200	4,750	2,920	7.99		
4.9ft	lb			*20,550	14,420	*15,060	9,660	11,490	7,050	10,470	6,440	(26.2)		
0.0m	kg			*9,380	6,330	*6,950	4,240	5,150	3,130	4,880	2,980	7.78		
0.0ft	lb			*20,680	13,960	*15,320	9,350	11,350	6,900	10,760	6,570	(25.5)		
-1.5m	kg	*9,680	*9,680	*8,690	6,310	*6,540	4,200			*5,000	3,270	7.27		
-4.9ft	lb	*21,340	*21,340	*19,160	13,910	*14,420	9,260			*11,020	7,210	(23.8)		
-3.0m	kg	*9,230	*9,230	*7,230	6,420	*5,280	4,290			*4,690	3,980	6.37		
-9.8ft	lb	*20,350	*20,350	*15,940	14,150	*11,640	9,460			*10,340	8,770	(20.9)		

Boom 5.70 m (18' 8") / Arm 2.4 m (7' 10") / CWT 5,300 kg (11,684 lb) / Shoe 600 mm (24") triple grouser / Dozer Up

Load point height m (ft)		Load radius								At max. reach				
		3.0 m (9.8 ft)		4.5 m (14.8 ft)		6.0 m (19.7 ft)		7.5 m (24.6 ft)		Capacity		Reach		
												m (ft)		
9.0m	kg	*7,630	*7,630									*7,480	*7,480	3.32
29.5ft	lb	*16,820	*16,820									*16,490	*16,490	(10.9)
7.5m	kg			*5,900	*5,900							*5,810	*5,810	5.55
24.6ft	lb			*13,010	*13,010							*12,810	*12,810	(18.2)
6.0m	kg			*6,100	*6,100	*5,500	5,260					*5,390	4,280	6.78
19.7ft	lb			*13,450	*13,450	*12,130	11,600					*11,880	9,440	(22.2)
4.5m	kg	*9,960	*9,960	*7,070	*7,070	*5,830	5,120	*5,230	3,590	*5,230	3,580	7.51		
14.8ft	lb	*21,960	*21,960	*15,590	*15,590	*12,850	11,290	*11,530	7,910	*11,530	7,890	(24.7)		
3.0m	kg			*8,400	7,410	*6,380	4,890	5,260	3,520	4,850	3,240	7.90		
9.8ft	lb			*18,520	16,340	*14,070	10,780	11,600	7,760	10,690	7,140	(25.9)		
1.5m	kg			*9,320	6,970	*6,830	4,680	5,160	3,420	4,700	3,130	7.99		
4.9ft	lb			*20,550	15,370	*15,060	10,320	11,380	7,540	10,360	6,900	(26.2)		
0.0m	kg			*9,380	6,770	*6,950	4,540	5,090	3,360	4,830	3,200	7.78		
0.0ft	lb			*20,680	14,930	*15,320	10,010	11,220	7,410	10,650	7,050	(25.5)		
-1.5m	kg	*9,680	*9,680	*8,690	6,740	*6,540								

# LIFTING CAPACITY

Rating over-front Rating over-side or 360 degree

## HX235 LCR

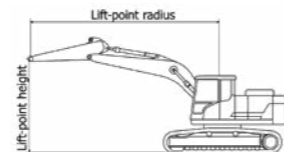
Boom 5.70 m (18' 8") / Arm 2.9 m (9' 6") / CWT 5,300 kg (11,684 lb) / Shoe 600 mm (24") triple grouser / Without Dozer

Load point height m (ft)		Load radius										At max. reach		
		1.5 m (4.9 ft)		3.0 m (9.8 ft)		4.5 m (14.8 ft)		6.0 m (19.7 ft)		7.5 m (24.6 ft)		Capacity		Reach
														m (ft)
9.0m 29.5ft	kg lb											*5,230 *11,530	*5,230 *11,530	4.25 (13.9)
7.5m 24.6ft	kg lb			*5,260 *11,600	*5,260 *11,600	*4,810 *10,600	*4,810 *10,600					*4,320 *9,520	*4,320 *9,520	6.15 (20.2)
6.0m 19.7ft	kg lb			*5,520 *12,170	*5,520 *12,170	*5,070 *11,180	5,040 11,110					*4,020 *8,860	3,620 7,980	7.27 (23.9)
4.5m 14.8ft	kg lb			*8,640 *19,050	*8,640 *19,050	*6,490 *14,310	*6,490 *14,310	*5,470 *12,060	4,880 10,760	*4,910 *10,820	3,400 7,500	*3,950 *8,710	3,070 6,770	7.96 (26.1)
3.0m 9.8ft	kg lb					*7,870 *17,350	7,110 15,670	*6,070 *13,380	4,630 10,210	*5,130 *11,310	3,300 7,280	*4,050 *8,930	2,790 6,150	8.32 (27.3)
1.5m 4.9ft	kg lb					*9,010 *19,860	6,590 14,530	*6,630 *14,620	4,390 9,680	5,200 11,460	3,180 7,010	*4,310 *9,500	2,680 5,910	8.41 (27.6)
0.0m 0.0ft	kg lb			*5,310 *11,710	*5,310 *11,710	*9,370 *20,660	6,310 13,910	*6,880 *15,170	4,210 9,280	5,100 11,240	3,090 6,810	4,480 9,880	2,720 6,000	8.21 (26.9)
-1.5m -4.9ft	kg lb	*5,710 *12,590	*5,710 *12,590	*9,760 *21,520	*9,760 *21,520	*8,950 *19,730	6,230 13,730	*6,670 *14,700	4,140 9,130	*5,040 *11,110	3,060 6,750	*4,780 *10,540	2,950 6,500	7.73 (25.4)
-3.0m -9.8ft	kg lb			*10,420 *22,970	*10,420 *22,970	*7,780 *17,150	6,290 13,870	*5,790 *12,760	4,170 9,190			*4,630 *10,210	3,490 7,690	6.89 (22.6)
-4.5m -14.8ft	kg lb			*7,190 *15,850	*7,190 *15,850	*5,470 *12,060	*5,470 *12,060					*4,060 *8,950	*4,060 *8,950	5.52 (18.1)

Boom 5.70 m (18' 8") / Arm 2.9 m (9' 6") / CWT 5,300 kg (11,684 lb) / Shoe 600 mm (24") triple grouser / Dozer Up

Load point height m (ft)		Load radius										At max. reach			
		1.5 m (4.9 ft)		3.0 m (9.8 ft)		4.5 m (14.8 ft)		6.0 m (19.7 ft)		7.5 m (24.6 ft)		Capacity		Reach	
														m (ft)	
9.0m 29.5ft	kg lb												*5,230 *11,530	*5,230 *11,530	4.25 (13.9)
7.5m 24.6ft	kg lb			*5,260 *11,600	*5,260 *11,600	*4,810 *10,600	*4,810 *10,600					*4,320 *9,520	*4,320 *9,520	6.15 (20.2)	
6.0m 19.7ft	kg lb			*5,520 *12,170	*5,520 *12,170	*5,070 *11,180	*5,070 *11,180					*4,020 *8,860	3,860 8,510	7.27 (23.9)	
4.5m 14.8ft	kg lb			*8,640 *19,050	*8,640 *19,050	*6,490 *14,310	*6,490 *14,310	*5,470 *12,060	5,170 11,400	*4,910 *10,820	3,620 7,980	*3,950 *8,710	3,270 7,210	7.96 (26.1)	
3.0m 9.8ft	kg lb					*7,870 *17,350	7,540 16,620	*6,070 *13,380	4,930 10,870	*5,130 *11,310	3,520 7,760	*4,050 *8,930	2,980 6,570	8.32 (27.3)	
1.5m 4.9ft	kg lb					*9,010 *19,860	7,020 15,480	*6,630 *14,620	4,680 10,320	5,140 11,330	3,400 7,500	*4,310 *9,500	2,870 6,330	8.41 (27.6)	
0.0m 0.0ft	kg lb			*5,310 *11,710	*5,310 *11,710	*9,370 *20,660	6,740 14,860	*6,880 *15,170	4,510 9,940	5,050 11,130	3,310 7,300	4,430 9,770	2,920 6,440	8.21 (26.9)	
-1.5m -4.9ft	kg lb	*5,710 *12,590	*5,710 *12,590	*9,760 *21,520	*9,760 *21,520	*8,950 *19,730	6,660 14,680	*6,670 *14,700	4,430 9,770	5,020 11,070	3,290 7,250	*4,780 *10,540	3,170 6,990	7.73 (25.4)	
-3.0m -9.8ft	kg lb			*10,420 *22,970	*10,420 *22,970	*7,780 *17,150	6,720 14,820	*5,790 *12,760	4,470 9,850			*4,630 *10,210	3,740 8,250	6.89 (22.6)	
-4.5m -14.8ft	kg lb			*7,190 *15,850	*7,190 *15,850	*5,470 *12,060	*5,470 *12,060					*4,060 *8,950	*4,060 *8,950	5.52 (18.1)	

1. Lifting capacity are based on ISO 10567.
2. Lifting capacity of the HX A Series does not exceed 75% of tipping load with the machine on firm, level ground or 87% of full hydraulic capacity.
3. The Lift-point is bucket pivot mounting pin on the arm (without bucket mass).
4. (\*) indicates load limited by hydraulic capacity.



## HX235 LCR

Boom 5.70 m (18' 8") / Arm 2.9 m (9' 6") / CWT 5,300 kg (11,684 lb) / Shoe 600 mm (24") triple grouser / Dozer Down

Load point height m (ft)		Load radius										At max. reach				
		1.5 m (4.9 ft)		3.0 m (9.8 ft)		4.5 m (14.8 ft)		6.0 m (19.7 ft)		7.5 m (24.6 ft)		Capacity		Reach		
														m (ft)		
9.0m 29.5ft	kg lb												*5,230 *11,530	*5,230 *11,530	4.25 (13.9)	
7.5m 24.6ft	kg lb					*5,260 *11,600	*5,260 *11,600	*4,810 *10,600	*4,810 *10,600					*4,320 *9,520	*4,320 *9,520	6.15 (20.2)
6.0m 19.7ft	kg lb					*5,520 *12,170	*5,520 *12,170	*5,070 *11,180	*5,070 *11,180					*4,020 *8,860	*4,020 *8,860	7.27 (23.9)
4.5m 14.8ft	kg lb			*8,640 *19,050	*8,640 *19,050	*6,490 *14,310	*6,490 *14,310	*5,470 *12,060	*5,470 *12,060	*4,910 *10,820	3,910 8,620	*3,950 *8,710	3,530 7,780	7.96 (26.1)		
3.0m 9.8ft	kg lb					*7,870 *17,350	*7,870 *17,350	*6,070 *13,380	5,320 11,730	*5,130 *11,310	3,800 8,380	*4,050 *8,930	3,230 7,120	8.32 (27.3)		
1.5m 4.9ft	kg lb					*9,010 *19,860	7,670 16,910	*6,630 *14,620	5,080 11,200	*5,350 *11,790	3,690 8,140	*4,310 *9,500	3,110 6,860	8.41 (27.6)		
0.0m 0.0ft	kg lb			*5,310 *11,710	*5,310 *11,710	*9,370 *20,660	7,370 16,250	*6,880 *15,170	4,900 10,800	*5,400 *11,900	3,600 7,940	*4,790 *10,560	3,170 6,990	8.21 (26.9)		
-1.5m -4.9ft	kg lb	*5,710 *12,590	*5,710 *12,590	*9,760 *21,520	*9,760 *21,520	*8,950 *19,730	7,290 16,070	*6,670 *14,700	4,820 10,630	*5,040 *11,110	3,570 7,870	*4,780 *10,540	3,430 7,560	7.73 (25.4)		
-3.0m -9.8ft	kg lb			*10,420 *22,970	*10,420 *22,970	*7,780 *17,150	7,350 16,200	*5,790 *12,760	4,860 10,710			*4,630 *10,210	4,060 8,950	6.89 (22.6)		
-4.5m -14.8ft	kg lb			*7,190 *15,850	*7,190 *15,850	*5,470 *12,060	*5,470 *12,060					*4,060 *8,950	*4,060 *8,950	5.52 (18.1)		

1. Lifting capacity are based on ISO 10567.
2. Lifting capacity of the HX A Series does not exceed 75% of tipping load with the machine on firm, level ground or 87% of full hydraulic capacity.
3. The Lift-point is bucket pivot mounting pin on the arm (without bucket mass).
4. (\*) indicates load limited by hydraulic capacity.

