

STANDARD/OPTION

DESCRIPTION	HDT90S	HDT105S
BATTERY-165A	○	○
HEATER-ENGINE BLOCK	○	○
OIL-COLD OIL KIT	○	○
RETARDER-HYDRAULIC	○	○
WATER SPRAY-BRAKE DEVICE	○	○
HEATER-BODY-CARGO BODY	○	○
CHAIN-IRON-TAIL GATE	○	○
CAMERA-AAVM	○	○
LAMP-DRIVING-HALOGEN	●	●
LAMP-DRIVING-LED	○	○
PROTECTOR-FUEL TANK-GRID	○	○
SEAT-2"4P BELT	○	○
FUEL TANK-500L	●	●
FUEL TANK-700L-DUAL CHAMBER	○	○
TIRE-STD 14.00-25	●	×
TIRE-STD 16.00-25	×	●
TIRE-14.00R25 KUNLUN	○	×
TIRE-16.00R25 E-3 AEOLUS	×	○
TIRE-14.00R25 QIANJIN	○	×
TIRE-16.00R25 E-3 QIANJIN	×	○
TIRE-16.00R25 E-3 SAILUN	○	○
EXTENSION-BODY SIDE (30 CBM) WITH REAR DOOR	●	×
EXTENSION-BODY SIDE (33 CBM) WITH REAR DOOR	○	×
EXTENSION-BODY SIDE (33 CBM) WITHOUT REAR DOOR	○(ONLY FOR IDN)	×
EXTENSION-BODY SIDE (36 CBM) WITH REAR DOOR	×	●
EXTENSION-BODY SIDE (40 CBM) WITH REAR DOOR	×	○
EXTENSION-BODY SIDE (40 CBM) WITHOUT REAR DOOR	×	○(ONLY FOR IDN)
CABIN POSITION (LEFT HAND SIDE)	●	●
CABIN POSITION (RIGHT HAND SIDE)	○	○
EMERGENCY STEERING	○	○
WHEELCHOCK	○	○
REAR VIEW CAMERA	○	○
BUMPER TAIL	○	○
BACKBUZZER	○	○
ALARM-CARGO LIFTING	○	○
REMOVER- STONE	○	○
AUTOGREASE	○	○
LOCK SPARE TIRE	○	○

* ●:STD, ○:OPTION, ×: N/A



Head Office(Sales Office)
14F, GLOBAL R&D CENTER, 477 BUNDANG SUSEO-RO, BUNDANG-GU, SEONGNAM-SI, GYEONGGI-DO, 13553, KOREA

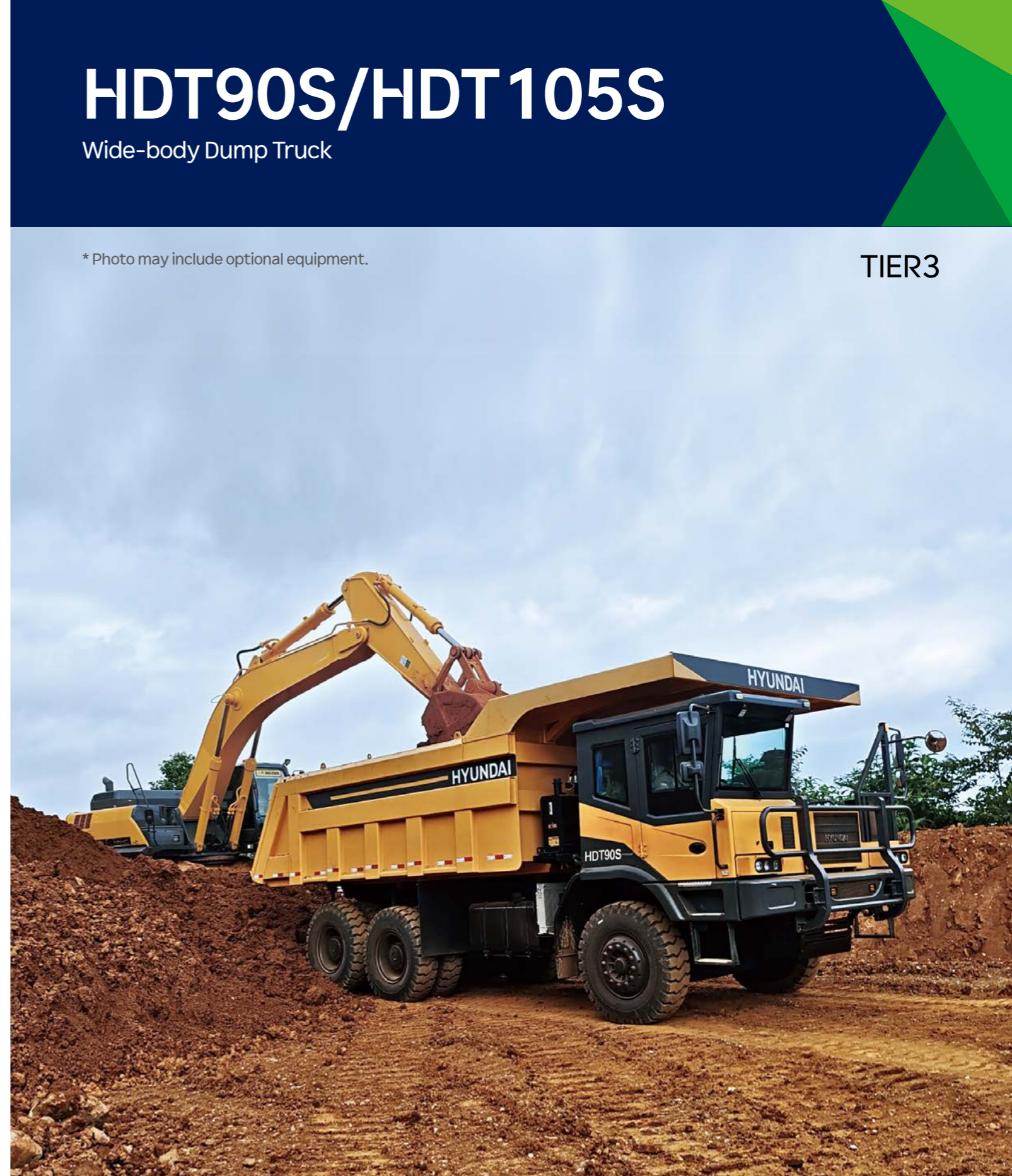
PLEASE CONTACT

HDT90S/HDT105S

Wide-body Dump Truck

* Photo may include optional equipment.

TIER3



Net Weight

HDT90S/30,000 kg
HDT105S/35,000 kg

Rated Power

HDT90S 343kW (460HP) at 2,100 rpm
HDT105S 395kW (530HP) at 2,100 rpm

Body Volume

HDT90S 30 m³
HDT105S 36 m³

Rated Payload

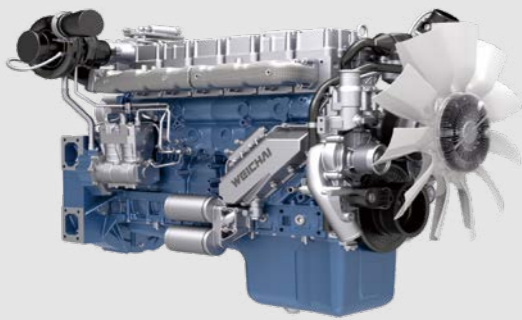
HDT90S 60,000 kg
HDT105S 70,000 kg

HYUNDAI

PRODUCTIVITY & EFFICIENCY THE ULTIMATED DUMP TRUCK

HDT90S/HDT105S

HDT90S/HDT105S is equipped with electronically controlled engine and automatic gearbox, with easy operation and high efficiency. The application of information and automation technology makes the management of mining equipment more efficient. Longer service life. lower transportation costs and more economical use due to the perfect combination of lightweight technology and reliability.



Powerful and cost effective

- New performance optimization version, high efficient fuel saving.
- 12-13L displacement, strong power and wide power coverage.



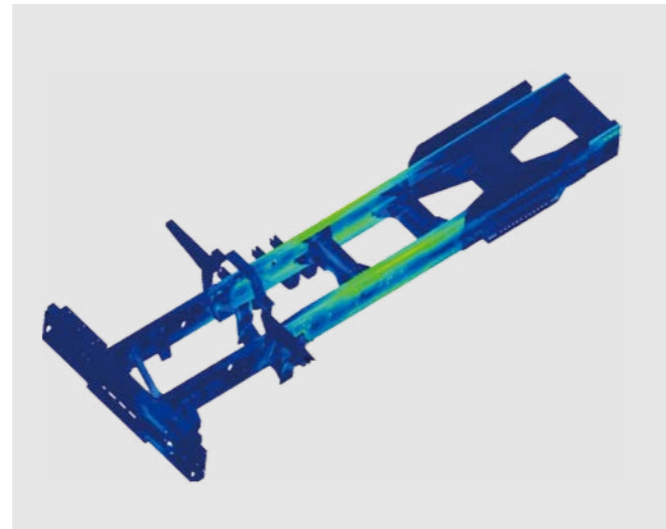
Intelligent design for improved economy

ROPS/FOPS certificate

Hyundai product has obtained the certificate for big payload through severe test.

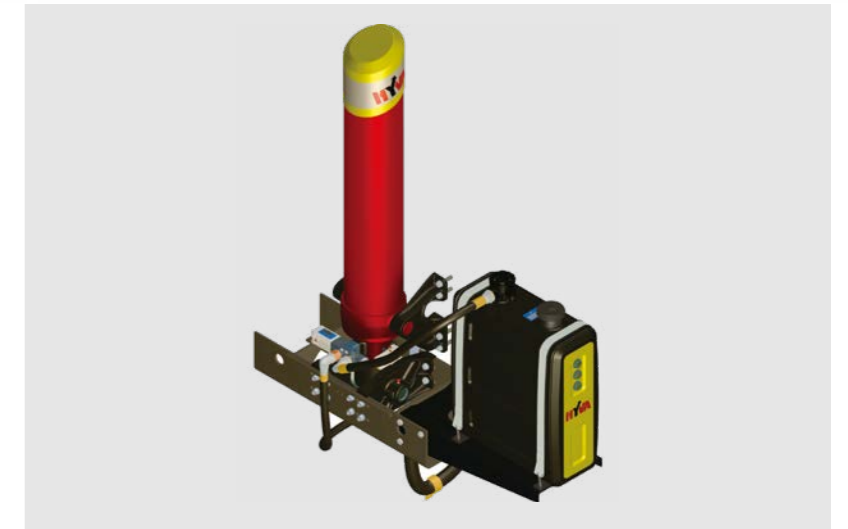
Main frame

· Flexible bolt and rivet connection frame type with high torsional bearing efficiency and long service life.



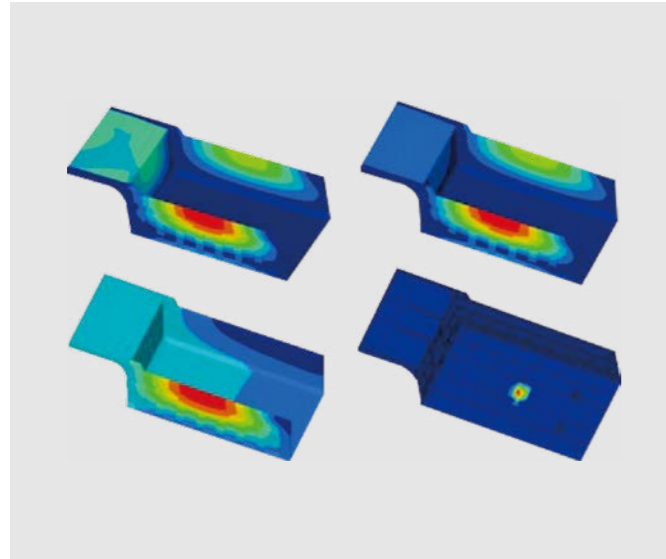
Lifting Device

- Specialized mine version lifting system with reliable and greater thrust.
- Optimization design of connecting bracket to strengthen support and improve lift safety.



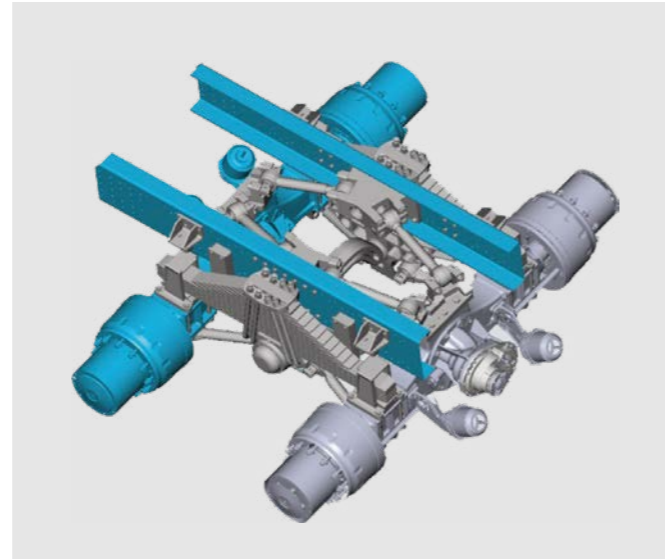
SUPERIOR RELIABILITY AND DURABILITY

HDT90S/HDT105S



Cargo body

Reinforced structure with strong impact resistance.



Suspension system

- The front suspension multi-level shock absorption element to improve driving comfort.
- The rear leaf spring clamping mechanism is reliable and practical.



Steering system

Reduce the steering oil temperature, steering operation is lighter, greatly improve the life cycle of the system components, and ensure the truck safety.



Hydraulic retarder

Transmission combined with hydraulic retarder can reduce the speed of the truck when going down a long slope, works long time and high power, reduce the wear out of braking components and extend the tire life time, ensure the operation safety.



Tire

Special mining tire for mine only with longitudinal and transverse groove design, which provide excellent grip performance, comfort of operation, strong carrying capacity and long service life.



Intake system

Three stage combined air filter can improve the efficiency of air filtering, and improve the air clearness.



Axle Assembly

- The special axle for mine transportation. Strengthened single casting axle housing, double reduction.
- Big torque, high transmission efficiency and high reliability.



Special cab for mining truck

- The new generation cap with large space, wide visible range and comfortable manipulation.
- Compression molding interior with tower noise and good quality.

SPECIFICATIONS

Engine	HDT90S	HDT105S
Engine Model	Weichai 460 horse power	Weichai 530 horse power
Rated Power	460HP at 2,100rpm	530HP at 2,100rpm
No. of Cylinders	6	
Max. Torque	204kgf·m	234.5kgf·m
Displacement	12-13L	
Bore Diameter×Stroke	126 X 155	127 X 165
Air Filter	Third level desert filtration	
Emissions	Non road Tier 3	

Hydraulic system	HDT90S	HDT105S
Type	single- cylinder front lift	
Maximum Pump Output	22MPa	
Filtration	High pressure filter	
Main Safety valve Pressure Tipping	22MPa	
Main Safety valve Pressure Steering circuit	16MPa	
Tilt Cylinders	FC179	FC191
Tipping Time Raise	25	27
Tipping Time Lower	25	27
Main Pumps Rated Flow	202 ℓ /min	
Implement Circuit	250 kgf/cm ²	

BODY	HDT90S	HDT105S
Body Volume (Without Tailgate)	30m ³	36m ³
Material	High strength wear-resistant plate	
Body Tipping Angle	50°	
Level Capacity	30m ³	36m ³
Heaped capacity	37m ³	43m ³

Axle	HDT90S	HDT105S
Load/T	20+35+35	25+40+40

Tires	HDT90S	HDT105S
Standard	14.00-25	16.00-25

CONTAINER	HDT90S	HDT105S
Base plate material/ thickness (mm)	NM400/16	
Rear plate material/ thickness (mm)	NM400/12	
Front plate material/ thickness (mm)	T700/10	
Side plate material/ thickness (mm)	T700/10	
Container volume (m ³)	30	36

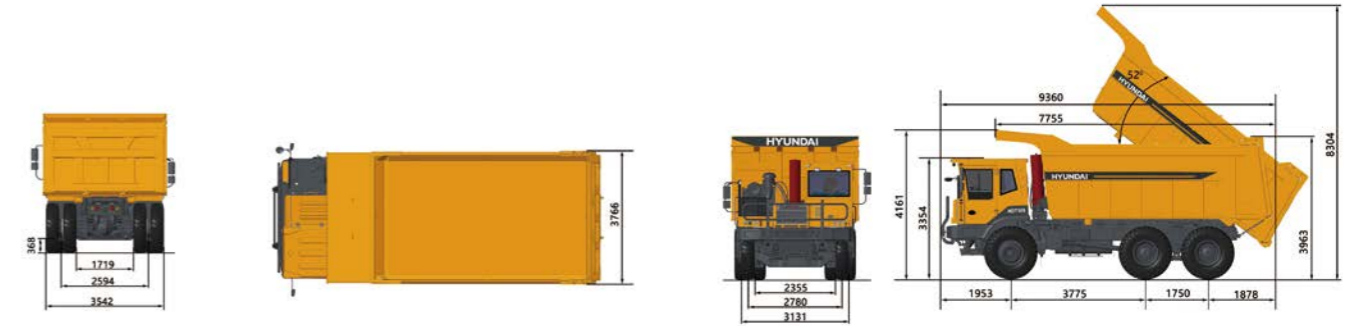
Weight distribution	HDT90S	HDT105S	
Empty load	Front axle (kg)	10000	15000
	Rear axle (kg)	20000	
	Total weight (50% fuel) (kg)	30000	35000
Loaded	Front axle (kg)	20000	25000
	Rear axle (kg)	70000	80000
	Total weight (kg)	90000	105000

STEERING SYSTEM	HDT90S	HDT105S
Steering device	Dual steering	Fully hydraulic steering
Cylinder	/	HLG1606
Max. Steering Angle	37°	

Tank Capacity	HDT90S	HDT105S
Heaped Capacity	500L	600L
Engine Oil	27L	
Hydraulic Tank	200L	

Performance	HDT90S	HDT105S
Travel Speed (forward, Max.)	40km/h	
Travel Speed (Reverse, Max.)	5km/h	4km/h

DIMENSIONS



Dimensions	HDT90S	HDT105S
Transport position/ cab height	3258	3354
Over outside front tire	14.00-25	16.00-25
Over outside rear tire	14.00-25	16.00-25
Between inner tires	2680/2500	2838/2626
Ground clearance front axle	305	400
Ground clearance rear axle	305	400
Ground clearance body fully tipped	600	800
Front axle centre to machine front	1953	
Front axle centre to art hinge	5860	6119
Art hinge to rear axle centre	534	595
Rear axle centre to body tip	3106	3426
Front axle centre to rear axle centre	3775	
Wheelbase rear axle	1550	1750
Approach angle front	27°	28°
Max. body tip angle	50°	
Max. steering angle	37°	
Load height (SAE 2:1)	4373	4638
Inner turning radius	8.4M	
Outer turning radius	11m	
Corridor width	Single lane>6m, Two-lane>11m	