

HL955A

With EU Stage V Engine Installed

* Photo may include optional equipment.



Head Office(Sales Office)
14F, GLOBAL R&D CENTER, 477 BUNDANG SUSEO-RO, BUNDANG-GU, SEONGNAM-SI, GYEONGGI-DO, 13553, KOREA

PLEASE CONTACT

Gross Power
200 HP (149 kW) at 2,200 rpm

Net Power
197 HP (147 kW) 2,200 rpm

Bucket Capacity
2.8 m³

Operating Weight
15,800kg / 34,830 lb

WHAT'S NEWEST AND BEST

HL955A

THE BEST PRODUCTIVITY AND FUEL EFFICIENCY

- EU STAGE V Engine
- Eco Report
- Smart Power Mode
- Hydraulic Differential Lock **Option**
- 5 Speed Lock Up Clutch **Option**
- Parallel Z-bar Linkage
- ICCO (Intelligent Clutch Cut Off)
- Automatic Engine Shut Down
- Optimized Power Matching

ULTIMATE DURABILITY

- Unified Control Valve
- Enhanced Axle Capacity
- Axle Oil Cooling System **Option**
- Thermostat for Transmission Cooling **Option**
- Optimized Drive Shaft
- High Quality Hydraulic Hose

EASY CONTROL AND COMFORTABLE OPERATION

- Electric Adjustable Heated Mirror **NEW**
- Fully Adjustable Seat and Armrest
- Air Compressor **Option**
- Remote Door Control **Option**
- Auto Greasing System **Option**
- Ride Control **Option**
- Full Sound-Proofed Spacious Cabin
- Wide Touch Screen Monitor
- Centralized Cluster
- Soft end Stop
- Weighing System
- Bucket Angle Display **NEW**
- Bucket Shaking **NEW**

THE ULTIMATE SAFE ENVIRONMENT

- Emergency Stop
- Seat Belt Warning Alarm
- Radar **Option**
- AAVM+(Advanced Around View Monitoring) **NEW** **Option**
- See-Through Bucket **NEW** **Option**

SERVICEABILITY AND TELEMATICS

- Unnecessary Regular DPF Cleaning Interval
- ECD(Engine Connected Diagnostics)
- Fully Openable Engine Hood
- Hi MATE **Option**
- Easy Filter Replacement
- Wide Core and Fin Radiator
- Integrated Mudguard **NEW**



* Photo may include optional equipment.



THE BEST PRODUCTIVITY AND FUEL EFFICIENCY

The new HYUNDAI HL955A with new engine technologies is satisfying the most strict environmental emission regulation in the world and A series in wheel loader have a number of new features that contribute to overall fuel and also production efficiency

FUEL SAVINGS

up to **5%**
V-type loading cycle
(Compared to Power mode)



Smart Power Mode

Smart Power mode reduces fuel consumption by adjusting the engine speed in heavy load work like digging. The key point of this function is not only saving fuel with same performance as Power mode but also making good balance between traction force and breakout force.



Hydraulic Differential Lock **Option**

Hydraulic differential lock has the advantages of both improving productivity and less fuel consumption by preventing tire slip during the operation.



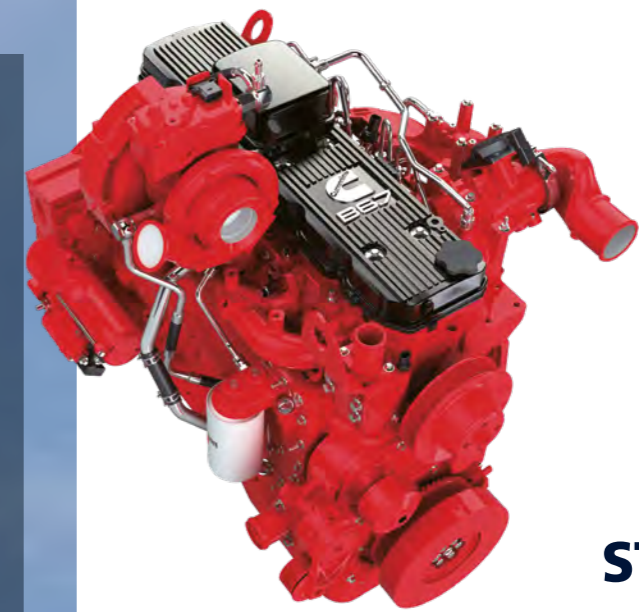
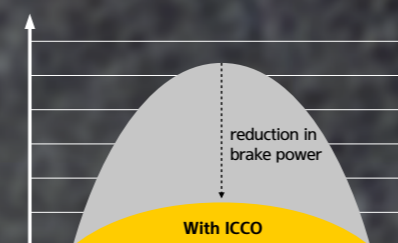
Parallel Z-bar Linkage

Newly developed parallel z-bar linkage provides perfect parallel lift function with high tilt forces.



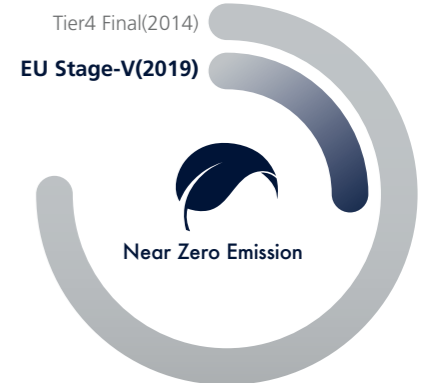
ICCO (Intelligent Clutch Cut Off)

By selecting of 'H-Mode' among clutch cut-off selections, ICCO will be engaged for both less power loss in torque converter and lower heat generation on brake sides.



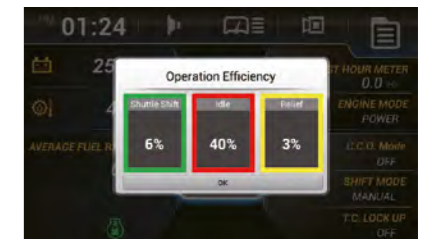
EU STAGE V Engine

'Cummins B6.7' engine meeting Euro Stage V emission regulations is designed for maximum productivity and fuel efficiency.



Eco Report

Eco report shows the wheel loader's inefficient operation status in order to improve operator's improper working habit.



Automatic Engine Shut Down

Adjustable 'Automatic engine shut down' significantly reduces idle time, overall operating hours and fuel consumption.



5 Speed Lock Up Clutch **Option**

By using of 5 Speed & lock up clutch, now operator can enjoy both the reduction of Fuel consumption and various of use in gears depends on the working condition. (2nd ~ 5th Gear Locking)



Optimized Power Matching

For maximum operational efficiency, the engine is designed to achieve high torque in the low RPM range. Change an engine rpm at peak torque to lower rpm section also.

Photo may include optional equipment.



ULTIMATE DURABILITY

The true value of the HL955A, which is now far more powerful, is revealed in tough working environments. With the high-strength design structure and enduring system proven by rigorous road tests at various work sites, Hyundai wheel loaders can perform any high-load work to maximize productivity.



Unified Control Valve

HL955A improved hydraulic system. Unified control valve system removes the hydraulic hose connected with each valve and has fewer leak points. Because MCV is integrated with ride control valve and EPPR valve.

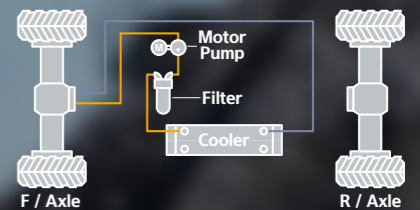
Enhanced Axle Capacity

HL955A applied larger capacity axle than the previous series. It offers more reliable performance and longer durability.

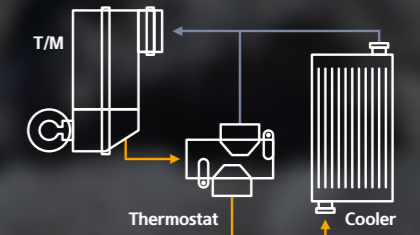


Axle Oil Cooling System Option

Axle oil cooling system prevents overheating of axle oil caused by frequent braking and high-load work.



Thermostat for Transmission Cooling Option



Optimized Drive Shaft

Through thorough verification, the optimized drive shaft makes the HL955A wheel loader more durable.

High Quality Hydraulic Hose

High quality hydraulic hoses increased durability and product life cycle.





EASY CONTROL AND COMFORTABLE OPERATION

The HL955A is optimized to enable operators to access accurate equipment data in a timely manner. This feature is more important in tough working environments to increase productivity while enjoying various forms of entertainment. Enjoy unparalleled satisfaction provided by infotainment of Hyundai's state-of-the-art information technology!

*Photo may include optional equipment.

Electric Adjustable Heated Mirror **NEW**

The electrically adjustable heated mirrors can be controlled from inside the cabin with a switch, offering angle adjustment and a heating function to enhance operator convenience.



Fully Adjustable Seat and Armrest

This suspension will be applied for minimizing an operator's fatigue.



Ride Control **Option**

Ride control system reduces operator fatigue and material spillage during operation. An accumulator helps to minimize shock, giving the operator a much smoother ride.



Auto Greasing System **Option**

Auto greasing system is designed to automatically lubricate when it is needed. Uniform application of lubricant ensures that the lubrication points always have the correct amount of grease.



Air Compressor **Option**

Air Compressor will be used for cleaning inside the cabin and for operator self-cleaning.



Full Sound-Proofed Spacious Cabin

State-of-the-art noise reduction technology of the HL955A ensures maximum silence (67dB) in the same category of equipment, promising more silent and more pleasant interior space.



Remote Door Control **Option**

Remote door control allows operators to open the cabin door remotely. This system was developed for the convenience and safety of the operator.



Bucket Shaking **NEW**

It makes it easier to shake off debris from inside the bucket.



Wide Touch Screen Monitor

The seven-inch capacitive-type display (like a smart phone display) provides excellent legibility.



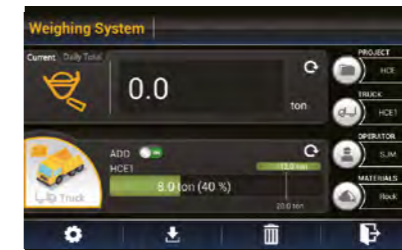
Centralized Cluster

With a centralized cluster, operator can see at a glance all the states of wheel loader.



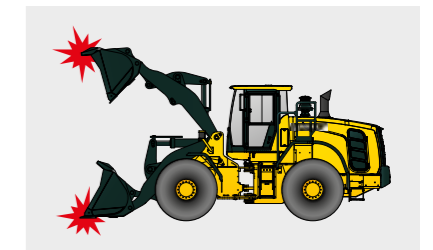
Weighing System

The HL955A further improves work precision with additional weight calibration. The automatic/manual cumulative weighing function greatly enhances operating efficiency. Icons displaying weighing errors and the two-color weight value indication on the monitor enable accurate weighing to support efficient production management.



Soft End Stop

When an attachment reaches at the end stroke, it gives operator enormous shock especially for Boom up. This function gives shock free operation by reducing the speed of attachment near the end stroke. It can be selected on/off through Monitor.





THE ULTIMATE SAFE ENVIRONMENT

With the top priority on satisfaction of operators in terms of silence, safety and maintainability, Hyundai wheel loaders provide operators with comfortable cabin space by low-vibration, low-noise, and superior safety design. They also offer greater satisfaction by extending the replacement cycle of supplies and minimizing maintenance time and cost.



*Photo may include optional equipment.



HL955A with advanced technology ensures our safety on a construction site.



The A Series in wheel loaders are products of HCE's spirit of initiative, creativity, and strong drive. HCE engineers, who are the best in the industry, have worked tirelessly to offer a zero-defect product. The new A Series in wheel loaders reflects customers' needs in the field gleaned by thorough monitoring.

Emergency Stop

In an emergency, operating the Emergency Stop switch located at the bottom of the seat will shut down the engine starting.



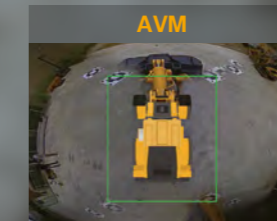
Radar Option

The Radar system can detect rear obstacles without blind spots and no distinction between day and night. Also, the warning level of the nearest obstacle is always displayed on the secondary monitor.



AAVM+(Advanced Around View Monitoring) NEW Option

This is a system that is combined AVM (Around View Monitoring) with IMOD (Intelligent Moving Object Detection) and detects people around the machine and analyzes the images, which displays a warning sign on a monitor when detecting the danger. So operators can watch the surroundings in a variety of angles through the monitor and prevent the safety accident in advance.



It displays the position of people with a top view.



A green warning sign is displayed when people move in within a 5-meters radius.



A red warning sign is displayed when people move in within a 3-meters radius.



It offers reverse guidelines and a feature that alerts you only to objects detected in the reversing path.



It enhances safety by improving monitor visibility in areas obscured by the bucket.



SERVICEABILITY AND TELEMATICS

IoT, ICT, AI-based digital technologies is creating smart construction sites. Maximizes connectivity, productivity, and safety for your successful businesses.



Hi MATE

Option

IT'S CONVENIENT, EASY AND VALUABLE

Hi MATE Hyundai's newly developed remote management system, utilizes GPS-satellite technology to provide customers with the highest level of service and product support available. Hi MATE enables users to remotely evaluate machine performance, access diagnostic information, and verify machine locations at the touch of a button.

WHAT IS BENEFITS



Increase Productivity

It helps you operate machines in efficient. You can check the difference between total engine hours and actual working hours. See how productive your machines are and plan any required cost saving solutions. Hi MATE offers working information such as working / idling hours, fuel consumption and rate.



Convenient and Easy Monitoring

There is nothing much to do to monitor your machines. Just log on to the Hi MATE website or mobile application. Hi MATE allows you to watch your machines whenever and wherever you are.



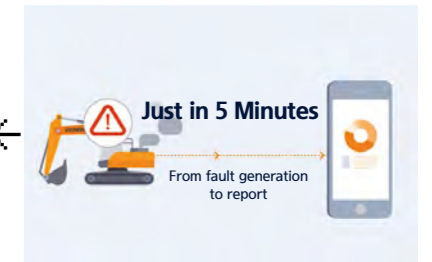
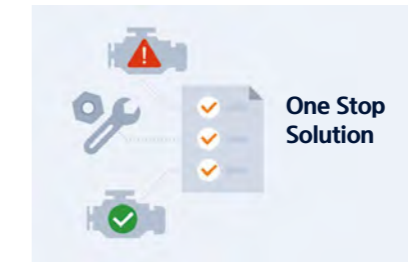
Security

Protect your machines from theft or unauthorized usage with Hi MATE. If the machine moves out of the Geofence boundary, you will get alerts.

ECD(Engine Connected Diagnostics)

It supports service technician with remote diagnostics report and ensure it arrive on site with proper tools after preparing in advance.

We are all connected



Unnecessary Regular DPF Cleaning Interval

Regular ash cleaning for DPF is not necessary, only needed as indicated by fault-indicator lamp.

Fully Openable Engine Hood

The HL955A has improved accessibility to the sealed engine room with retractable hood to allow easy cleaning and maintenance. The engine room was designed to prevent possibility of fire due to inflow of foreign materials. The fully retractable engine hood in the electric actuator opening mode also enhances maintainability of the engine room and cooling room.

Longer Lasting Filter

The service interval of fuel filters has been increased from 500 hours to 1,000 hours.

200%
IMPROVED



Easy Filter Replacement

With easy filter replacement, machine can be managed more easily.

Wide Core and Fin Radiator

Wide core and fin radiator reduces clogging.



*Photo may include optional equipment.

SPECIFICATIONS

ENGINE	
Maker / Model	CUMMINS / B6.7
Type	turbocharged, charge aircooled, diesel engine.
Gross Power (SAE J1995)	200 HP (149 kW) at 2,200 rpm
Net Power (SAE J1349)	197 HP (147 kW) at 2,200 rpm
Max. Power	210 HP (157 kW) at 1900 rpm
Peak Torque(SAE J1995)	990 N · m (730 lb.ft) at 1,300 rpm
Displacement	6.7 L (408 cu in)

TRANSMISSION	
Torque Converter Type	3-elements, single-stage single-phase
Tire	20.5 R25, ★★, L3

Travel Speed		4 Speed T/M	5 Speed T/M with lock up clutch
		km/h (mph)	km/h (mph)
Forward	1st	7.1 (4.4)	6.5 (4.0)
	2nd	11.7 (7.3)	11.4 (7.1)
	3rd	23.6 (14.7)	17.6 (10.9)
	4th	39.2 (24.4)	27.3 (17.0)
	5th	-	40.0 (24.9)
Reverse	1st	7.4 (4.6)	6.9 (4.3)
	2nd	12.3 (7.6)	12.0 (7.5)
	3rd	24.9 (15.5)	28.8 (17.9)

• This is the maximum travel speed of a standard machine with unfilled bucket.

AXLES	
Drive System	Four-wheel drive system
Front	Fixed
Rear	Oscillating ±11 degrees
Hub Reduction	Planetary reduction at wheel end
Differential	Conventional
Reduction Ratio	23.333

TIRES	
Type	Tubeless, loader design Tires
Standard	20.5 R25, ★★, L3
Options Include	20.5 R25, ★, XHA
	20.5-25, 16PR, L3
	20.5-25, 16PR, L5

OVERVIEW			
Description	HL955A	HL955A XT	HL955A TM
Operating Weight	15,800 kg (34,835 lb)	16,490 kg (36,355 lb)	16,500 kg (36,380 lb)
Bucket Capacity	Heaped 2.8 m ³ (3.7 yd ³)	2.8 m ³ (3.7 yd ³)	2.7 m ³ (3.5 yd ³)
	Struck 2.4 m ³ (3.1 yd ³)	2.4 m ³ (3.1 yd ³)	2.3 m ³ (3.0 yd ³)
BreakoutForce-Bucket	14,370 kg (31,685 lb)	14,540 kg (32,060 lb)	12,820 kg (28,260 lb)
Tipping Load	Straight 11,350 kg (25,025 lb)	9,400 kg (20,725 lb)	11,000 kg (24,250 lb)
	Full Turn 9,850 kg (21,720 lb)	8,150 kg (17,970 lb)	9,550 kg (21,050 lb)

HYDRAULIC SYSTEM		
Type	Load sensing hydraulic system	
Pump	Variable displacement piston pump, 220 lpm	
Control Valve	2 Spool (Bucket, Boom) 3 Spool (Bucket, Boom, Aux)	
System Pressure	280 bar (4,061 psi)	
Lift Circuit	The valve has four functions : Raise / Hold / Lower / Float Can adjust automatic kickout from horizontal to full lift.	
Tilt Circuit	The valve has three functions : Tilt back / Hold / Dump Can adjust automatic bucket positioner to desired load angle.	
Cylinder	Type : double acting	
	No. of cylinders-bore × stroke	
	Lift	2-125 × 745 mm (2-4.9" × 29.3")
	HL955A Tilt	1-140 × 560 mm (1-5.5" × 1' 10")
Cycle Time	HL955A XT Tilt	1-140 × 585 mm (1-5.5" × 1' 11")
	Raise : 5.5 Sec. Dump : 1.8 Sec. Lower : 3.9 Sec. Total : 11.2 Sec.	

BRAKES	
Service Brakes	Hydraulically actuated, wet disc brakes actuate all 4 wheels, independent axle-by-axle system. Self adjusting & wheel speed brake.
Parking Brake	Spring-applied, hydraulically released brake
Emergency Brake	When brake oil pressure drops, indicator light alerts operator and parking brake automatically applies.

STEERING SYSTEM	
Type	Load sensing hydrostatic articulated steering
Pump	Variable displacement piston pump, 220 lpm
System Pressure	210 bar (3,046 psi)
Cylinder	Double acting 2 - 70 mm (2.8") x 418 mm (16.5")
Steering Angle	40° to both right and left angle, respectively
Features	Center-point frame articulation. Tilt and telescopic steering column.

* Hyundai Bio Hydraulic Oil (HBHO) available

SERVICE REFILL CAPACITIES	
Fuel Tank	230.0 liters (60.8 US gal)
DEF Tank	30.1 liters (8.0 US gal)
Cooling System	42.0 liters (11.1 US gal)
Crankcase	18.0 liters (4.8 US gal)
Transmission	44.0 liters (11.6 US gal)
Front Axle	35.0 liters (9.2 US gal)
Rear Axle	35.0 liters (9.2 US gal)
Hydraulic Tank	110.0 liters (29.1 US gal)
Hydraulic System (Including Tank)	190.0 liters (41.8 US gal)

CABIN	
ROPS / FOPS Cabin Meet ISO 3471 and ISO 3449	

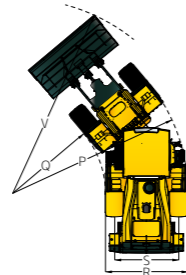
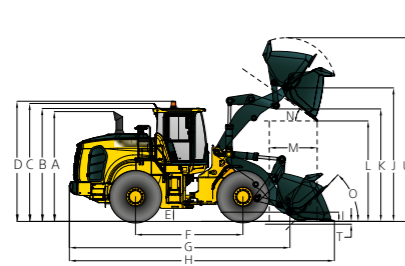
SOUND	
Guaranteed noise level presented below can be differed depending on a range of factors such as operating condition, speed of a cooling fan, types of engine and so forth. Hearing protection shall be necessary if an operator is working in the improperly maintained cabin or exposed to a noisy environment by leaving doors and/or windows open.	
With cooling fan speed at maximum value:	
Operator Sound Pressure Level (ISO 6396:2008)	67 dB(A)
Exterior Sound Power Level (ISO 6395:2008)	103 dB(A)

* Distance of 15 m (49.2 ft), moving forward in second gear ratio.

DIMENSIONS AND SPECIFICATIONS

HL955A DIMENSIONS

All dimensions are approximate



Unit: mm (ft · in)

Description	HL955A	HL955A XT	HL955A TM
A Height to Top of Exhaust Pipe	3,320 (10' 11")	3,320 (10' 11")	3,320 (10' 11")
B Height to Top of Cabin	3,390 (11' 1")	3,390 (11' 1")	3,390 (11' 1")
C Height to Top of Product Link Antenna	3,440 (11' 3")	3,440 (11' 3")	3,440 (11' 3")
D Height to Top of Warning Beacon	3,520 (11' 7")	3,520 (11' 7")	3,520 (11' 7")
E Ground Clearance	410 (1' 4")	410 (1' 4")	410 (1' 4")
F Wheelbase	3,050 (10')	3,050 (10')	3,050 (10')
G Overall Length (without Bucket)	6,430 (21' 1")	7,025 (23' 1")	-
H Shipping Length (with Bucket Level on Ground)	7,715 (25' 4")	8,310 (27' 3")	7,820 (25' 8")
I Hinge Pin Height at Carry Position	440 (1' 5")	610 (2')	-
J Hinge Pin Height at Maximum Lift	3,940 (12' 11")	4,515 (14' 10")	4,020 (13' 2")

Description	HL955A	HL955A XT	HL955A TM
K Lift Arm Clearance at Maximum Lift	3,340 (10' 11")	3,905 (12' 10")	-
L Dump Clearance at Maximum Lift and 45° Discharge	2,785 (9' 2")	3,360 (11')	2,850 (9' 4")
M Reach at Maximum Lift and 45° Discharge	1,180 (3' 10")	1,220 (4')	1,360 (4' 6")
N Dump Angle at Maximum Lift and Dump (on Stops)	48	48	50
O Roll Backangle	Ground 41 Carry 46	41 47	41 50
P Clearance Circle (Diameter) to Outside of Tires	11,140 (36' 7")	11,140 (36' 7")	11,140 (36' 7")
Q Clearance Circle (Diameter) to Inside of Tires	5,980 (19' 4")	5,980 (19' 4")	5,980 (19' 4")
R Width Over Tires (Unloaded)	2,530 (8' 4")	2,530 (8' 4")	2,530 (8' 4")
S Tread Width	2,010 (6' 7")	2,010 (6' 7")	2,010 (6' 7")

OPERATING SPECIFICATIONS WITH BUCKETS

Linkage Bucket Type	General Purpose Pin On			High Lift Linkage Change
	Bolt-On Cutting Edges	2 Piece Tooth & Segment	General Purpose Hook On Bolt-On Cutting Edges	
Capacity – Rated	m ³	2.8	2.8	-
	yd ³	3.7	3.7	
Capacity – Rated at 110% Fill Factor	m ³	3.1	3.1	-
	yd ³	4.0	4.0	
Width	mm	2,740	2,810	-
	ft/in	9'	9' 3"	
Dump Clearance at Maximum Lift and 45° Discharge	mm	2,785	2,660	+575
	ft/in	9' 2"	8' 9"	1' 11"
Reach at Maximum Lift and 45° Discharge	mm	1,180	1,275	+40
	ft/in	3' 10"	4' 2"	+1.6"
Digging Depth	mm	85	85	+35
	ft/in	3"	3"	+1.4"
T Shipping Length (with Bucket)	mm	7,715	7,870	+595
	ft/in	25' 4"	25' 10"	+1' 11"
U Overall Height with Bucket at Maximum Lift	mm	5,330	5,330	+575
	ft/in	17' 6"	17' 6"	+1' 11"
V Loader Clearance Circle with Bucket at Carry Position	mm	12,550	12,720	+600
	ft/in	41' 2"	41' 9"	+1' 12"
Static Tipping Load, Straight (No Tire Deflection)*	kg	11,350	11,300	-1,950
	lb	25,025	24,915	-4,300
Static Tipping Load, Articulated (No Tire Deflection)	kg	9,850	9,800	-1,700
	lb	21,720	21,610	-3,750
Breakout Force	kg	14,370	14,370	+170
	lb	31,685	31,685	+375
Operating Weight*	kg	15,800	15,855	+690
	lb	34,835	34,955	+1,525

* All height and Tire related dimensions are with standard 20.5R25, ★★, L3 Tires.

DENSITY AND BUCKET SELECTION

DENSITY OF OPERATING MATERIALS

Loose Material	Material Density [ton / m ³]	
Earth / Clay	1.5 ~ 1.7	
Sand and Gravel	1.5 ~ 1.7	
Aggregate	25 ~ 76 mm (1 to 3 in)	1.6 ~ 1.7
	19 mm (0.75 in) and Larger	1.8

HL955A/ HL955A XT BUCKET SELECTION CHART

Standard Lift Arm - General Purpose Bucket

Type	m ³ (yd ³)	Material Density [t/m ³]															
		0.8	0.9	1.0	1.1	1.2	1.3	1.4	1.5	1.6	1.7	1.8	1.9	2.0	2.1	2.2	2.3
Cutting Edge	2.8 (3.7)	3.2 m ³ (4.2 yd ³)										2.7 m ³ (3.5 yd ³)					
2-Bolt on Tooth & Segment	2.8 (3.7)	3.2 m ³ (4.2 yd ³)										2.7 m ³ (3.5 yd ³)					
Cutting Edge Q/C	2.8 (3.7)	3.2 m ³ (4.2 yd ³)										2.7 m ³ (3.5 yd ³)					

High Lift Arm (XT) - General Purpose Bucket

Cutting Edge	2.8 (3.7)	3.2 m ³ (4.2 yd ³)										2.7 m ³ (3.5 yd ³)					
2-Bolt on Tooth & Segment	2.8 (3.7)	3.2 m ³ (4.2 yd ³)										2.7 m ³ (3.5 yd ³)					
Cutting Edge Q/C	2.8 (3.7)	3.2 m ³ (4.2 yd ³)										2.7 m ³ (3.5 yd ³)					

115% 100% 95%

CHANGE IN OPERATING SPECIFICATIONS - Tires

Tires		20.5-25 16PR L5	20.5 R25, ★, XHA	20.5-25 16PR L3
Operating Weight(kg)	kg	+440	-52	-108
	lb	+970	-115	-238
Static Tipping Load, Straight (No Tire Deflection)	kg	+280	-35	-70
	lb	+620	-80	-155
Static Tipping Load, Articulated (No Tire Deflection)	kg	+240	-30	-60
	lb	+530	-65	-135
Vertical Height Changes	mm	+65	-7	-3
	ft/in	+3"	-0.3"	-0.1"
R Width Over Tires(unloaded)	mm	+27	-6	-6
	ft/in	+1.1"	-0.2"	-0.2"
P Clearance Circle (diameter) to Outside of Tires	mm	+27	-6 m	-6
	ft/in	+1"	-0.2"	-0.2"
Q Clearance Circle (diameter) to Inside of Tires	mm	-27	+6	+6
	ft/in	-1"	+0.2"	+0.2"

** Dimension changes compared to 20.5R25, ★★, L3 radial tires.

STANDARD / OPTION

CABIN & INTERIOR	STD
ALARMS, AUDIBLE AND VISUAL	
Air filter clogging	●
Battery voltage	●
Brake oil pressure	●
DEF low level	●
Engine coolant level	●
Engine oil pressure	●
Fuel level	●
Hydraulic oil temperature	●
Engine coolant temperature	●
Parking brake	●
Service brake oil pressure	●
Seat belt ON/OFF	●
Transmission error	●
Transmission oil temperature	●
BATTERIES	
900 CCA, 12 V, 2 pcs	●
GAUGES	
Diesel Exhaust Fluid (DEF) level	●
Engine coolant temperature	●
Fuel level	●
Speedometer	●
Transmission oil temperature	●
Horn, electric	●
INDICATOR LIGHTS	
Parking brake	●
High beam	●
Pilot cut off	●
Turning light	●
Seat belt ON/OFF	●
Engine auto stop	●
Clutch Cut Off	●
Ride control	
Joystick steering	
FNR	
Differential Lock	
LCD DISPLAY	
DEF level	●
DEF low level	●
Transmission gear range	●
Clock and fault code	●
Job time and distance	●
Operating hour counter	●
Engine rpm	●
Horn, electric	●
LIGHTING SYSTEM	
Brake lights(Counterweight)	●
LED dome light	●
2 stop and tail lights	●
4 turn signals	●
2 Head lights on front tower	●
2 Head lights (LED) on front tower	
2 Working lights on front roof	●
4 Working lights on front roof	
2 Working lights on rear roof	
4 Working lights (LED) on front roof	
2 Working lights (LED) on rear roof	
2 Working lights on grill	●
2 Working lights (LED) on grill	

CABIN & INTERIOR	STD
SWITCHES	
Hazard	●
DPF	●
Engine hood open	●
Parking	●
Battery master switch	●
FNR shifter	●
Pilot cut off	●
Differential Lock foot switch	
Emergency steering	
air compressor	
IGNITION	
Key	●
Button	
MEMBRANE SWITCHES IN MONITOR	
Main light	●
Work light	●
Weighing System	●
Mirror heat	●
Auto position	●
Fine modulation	●
MEMBRANE SWITCHES IN MONITOR	
Rear wiper	●
Auto grease	
Quick coupler	
Ride control	
Beacon light	
Rear View Camera	●
CABIN (SOUND SUPPRESSED)	
ROPS/ FOPS Cabin	●
Coat hook	●
Rear view mirrors (1 Inside)	●
Rear view mirrors (2 Outside, heated)	●
Steering column, tilt and telescopic	●
Steering wheel with knob	●
Roller type sunshade (Front window)	●
Roller type sunshade (Rear window)	
Tinted safety glass	●
One door cabin	●
Magazine pocket	●
Radio / USB player	●
Rubber floor mat	●
Wrist rest & Armrest	●
24 V to 12 V DC converter (20 A)	●
Cigar lighter & ashtray	
DOOR	
Door and cabin locks, one key	●
Doors, service access (Locking)	
Doors, service access (Remote control)	
AUTOMATIC CLIMATE CONTROL	
Air conditioner & heater	●
Defroster	●
Intermittent wiper and washer, front and rear	●
SEAT	
2" Retractable seat belt & adjustable mechanical suspension (heated)	●
2" Retractable seat belt & adjustable air suspension (heated)	
3" Retractable seat belt & adjustable air suspension (heated)	

CABIN & INTERIOR	STD
PERSONAL STORAGE SPACE	
Console box	●
Holder, can and cup	●
PEDALS	
One accelerator pedal	●
One brake pedal	●
Dual-Brake pedal	
Accel pedal without ECO switch	●
Accel pedal with ECO switch	
ENGINE	
Alternator, 95A	●
Antifreeze	●
Fuel warmer (Single)	●
Fan guard	●
Rain cap, engine air intake	●
Coolant level sight gauge	●
Centrifugal air precleaner	
ENGINE, CUMMINS, B6.7	
Radiator	●
EU STAGE V / EPA TIER 4 FINAL	●
Engine fuel priming pump	●
Fuel / water separator	●
Engine oil level dipstick gauge	●
CLEAN EMISSION MODULE	
DOC, DPF and SCR	●
POWER TRAIN	
Transmission F4 / R3, computer controlled, electronic soft shift, auto-shift and kick-down features included	●
Transmission F5 / R3 with lock-up clutch & thermostat	
Torque converter	●
Transmission oil sight level	●
Transmission oil cooler	●
Travel speed limiter (20-40 km/h)	●
FRONT AXLE	
Open differential	●
Limited slip differential	
Hydraulic lock differential	
Axle cooling system	
REAR AXLE	
Open differential	●
Limited slip differential	
BRAKE	
Service brake (Enclosed wet-disk)	●
Parking brake	●
TIRES	
20.5 R25, ★★, L3	●
20.5-25, 16PR, L5	
20.5 R25, ★, XHA	
20.5-25, 16PR, L3	
HYDRAULIC SYSTEM	
Boom kickout, automatic	●
Bucket positioner, automatic	●
Diagnostic pressure taps	●
Hydraulic oil cooler	●
Hydraulic oil level sight gauge	●
EH Control (Joystick)	●
EH Control (Fingertip)	
EH Joystick steering	
Ride control system	

HYDRAULIC SYSTEM	STD
Secondary steering system	
Extra piping-for auxiliary function	
Quick coupler piping	
Auto grease system	
Hyundai Bio Hydraulic Oil (HBHO)	
SAFETY	
Emergency Stop	●
Emergency steering	
Rear View Camera	
Fire extinguisher	
Boom safety bar	
OBJECT DETECTION	
AAVM+(Advanced Around View Monitoring)	
See-through Bucket	
Radar + Secondary Monitor	
OTHERS	
Articulation locking bar	●
Lift and tie-down hooks	●
Loader linkage, sealed	●
Z-bar design	●
Vandalism protection caplocks	●
E-Horn	●
Air Compressor	
Tool kit	
Long boom	
BUCKET	
2.8m³ Bolt-on Cutting Edge Type Bucket	●
2.8m³ Bolt-on 2 Piece Tooth & Segment Type Bucket	
2.8m³ Bolt-on Cutting Edge Q/C Type Bucket	
COUNTERWEIGHT	
Counterweight	●
Counterweight - Heavyweight	
Drawbar with pin	●
ERGONOMICALLY LOCATED AND SLIP RESISTANT, LEFT & RIGHT	
Handrails	●
Ladders	●
Platforms	●
Steps	●
GUARDS	
Fenders (Front / Rear)	●
Crankcase	
Transmission	
Mud Guard	
TELEMETICS	
ECD (Engine connected Diagnostics)	●
Hi-Mate	

* Standard and optional equipment may vary. Contact your Hyundai dealer for more information. The machine may vary according to International standards.
 * The photos may include attachments and optional equipment that are not available in your area.
 * Materials and specifications are subject to change without advance notice.
 * All imperial measurements rounded off to the nearest pound or inch.