

| ENGINE | STD | OTP |
|--|-----|-----|
| Hyundai HM8.3 Engine | ● | |
| HYDRAULIC SYSTEM | | |
| Intelligent Power Control (IPC) | | |
| 3-power mode, 2-work mode, user mode | ● | |
| Variable power control | ● | |
| Pump flow control | ● | |
| Engine auto idle | ● | |
| CAB & INTERIOR | | |
| ISO Standard Cabin | | |
| Rise-up type windshield wiper | ● | |
| Radio / USB player | ● | |
| Handsfree mobile phone system with USB | ● | |
| 12 V power outlet (24 V DC to 12 V DC converter) | ● | |
| Electric horn | ● | |
| All-weather steel cab with 360° visibility | ● | |
| Safety glass windows | ● | |
| Sliding fold-in front window | ● | |
| Sliding side window (LH) | ● | |
| Lockable door | ● | |
| Hot & Cool box | ● | |
| Storage compartment & Ashtray | ● | |
| Sun visor | ● | |
| Door and cab locks, one key | ● | |
| Pilot-operated slidable joystick | ● | |
| Cabin lights | ● | |
| Automatic Climate Control | | |
| Air conditioner & Heater | ● | |
| Defroster | ● | |
| Starting aid (air grid heater) for cold weather | ● | |
| Centralized Monitoring | | |
| 8" LCD display - Normal type | ● | |
| Engine speed or trip meter / Accel | ● | |
| Engine coolant temperature gauge | ● | |
| Max power | ● | |
| Low speed / High speed | ● | |
| Auto idle | ● | |
| Overload | ● | |
| Check engine | ● | |
| Air cleaner clogging | ● | |
| Indicators | ● | |
| ECO gauges | ● | |
| Fuel level gauge | ● | |
| Hyd. oil temperature gauge | ● | |
| Warnings | ● | |
| Communication error | ● | |
| Low battery | ● | |
| Clock | ● | |
| Seat | | |
| Mechanical suspension without heater | ● | |

| SAFETY | STD | OTP |
|--|-----|-----|
| Battery master switch | ● | |
| Rearview camera | | ● |
| Six front working lights (4 boom mounted, 2 front frame mounted) | ● | |
| Rear work lamp | ● | |
| Automatic swing brake | ● | |
| Boom holding system | ● | |
| Arm holding system | ● | |
| Two outside rearview mirror | ● | |
| Travel alarm | | ● |
| Booms | | |
| 6.45 m, 21' 2" Mono | ● | |
| Arms | | |
| 2.65 m, 8' 7" | ● | |
| 3.2m, 10' 5" | | ● |
| Removable clean-out dust net for cooler | ● | |
| Removable washer tank | ● | |
| Fuel pre-filter | ● | |
| Self-diagnostics system | ● | |
| Hi-mate (Remote management system) | ● | |
| Batteries (2 × 12 V × 160 AH) | ● | |
| Fuel filler pump (50 l/min) | ● | |
| Single-acting piping kit (Breaker, etc.) | ● | |
| Accumulator for lowering work equipment | ● | |
| Tool kit | ● | |
| Centralized lubrication system | | ● |
| Lower frame under cover (Normal) | | |
| Track Shoes | | |
| Triple grouser shoes (600 mm, 24") | ● | |

- * Standard and optional equipment may vary. Contact your Hyundai dealer for more information. The machine may vary according to international standards.
- * The photos may include attachments and optional equipment that are not available in your area.
- * Materials and specifications are subject to change without advance notice.
- * All imperial measurements rounded off to the nearest pound or inch.

HX380L

* Photo may include optional equipment.



Head Office(Sales Office)
14F, GLOBAL R&D CENTER, 477 BUNDANG SUSEO-RO, BUNDANG-GU, SEONGNAM-SI, GYEONGGI-DO, 13553, KOREA

PLEASE CONTACT

Gross Power
260 HP @ 2200 rpm

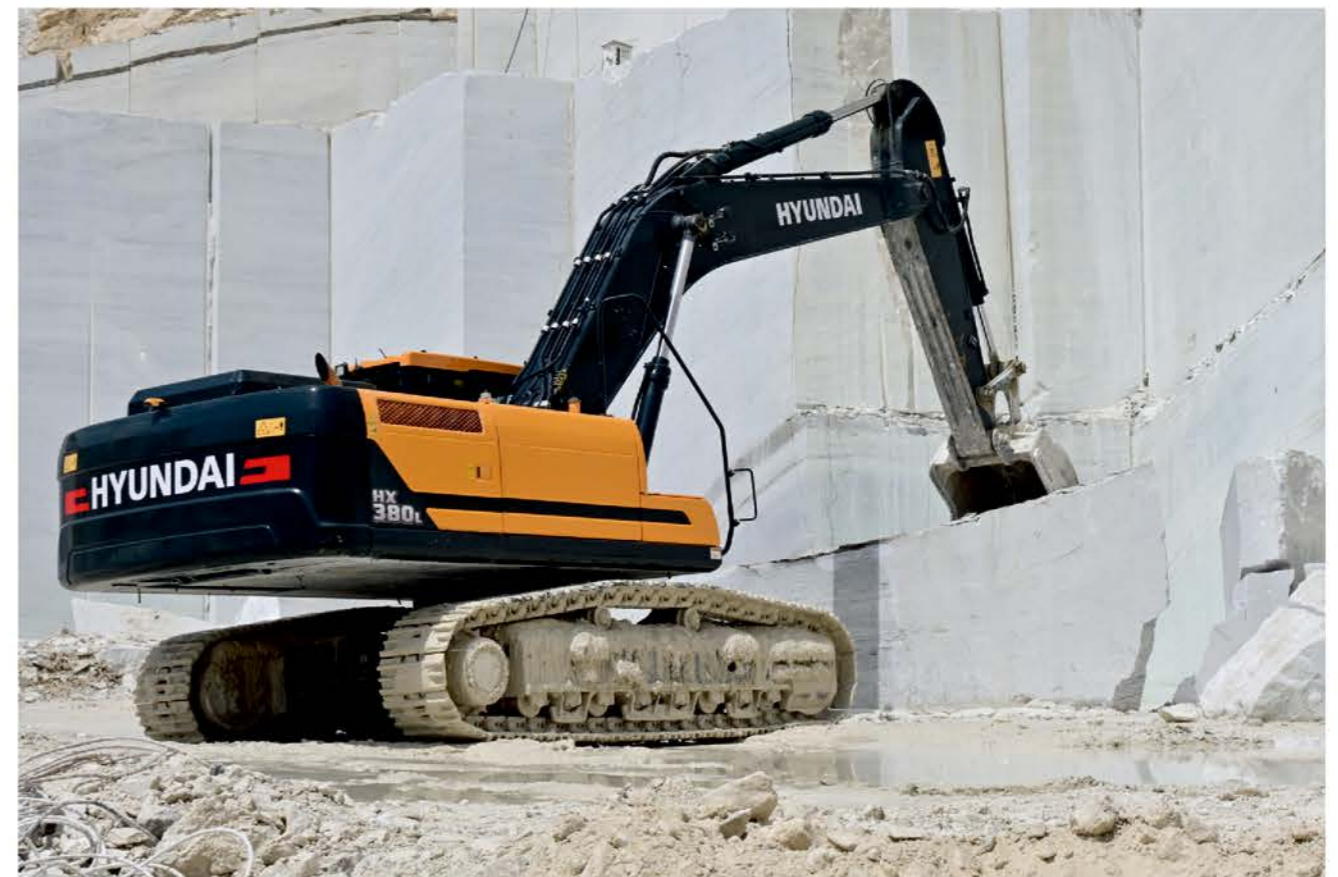
Bucket Capacity
1.44 ~ 2.32 m³

Operating Weight
37,200 kg

BLOCK HANDLING - GRANITE



BLOCK HANDLING - MARBLE



RULE THE GROUND

The HX Series exceeds customer's expectation!
Become a true leader on the ground with HCE's HX Series.

HX380L



WORK MAX, WORTH MAX

- New Variable Power Control
- Fuel Rate Information
- IPC (Intelligent Power Control)
- ECO Gauge
- New Cooling System with Increased Air Flow
- Enlarged Air Inlet with Grill Cover
- Cycle Time Improvement



MORE RELIABLE, MORE SUSTAINABLE

- Durable Cooling Module
- Reinforced Pin, Bush, and Polymer Shim
- Reinforced Durability of Upper and Lower Structure and Attachments
- Wear Resistant Cover Plate
- Hi-grade (High-pressure) Hoses



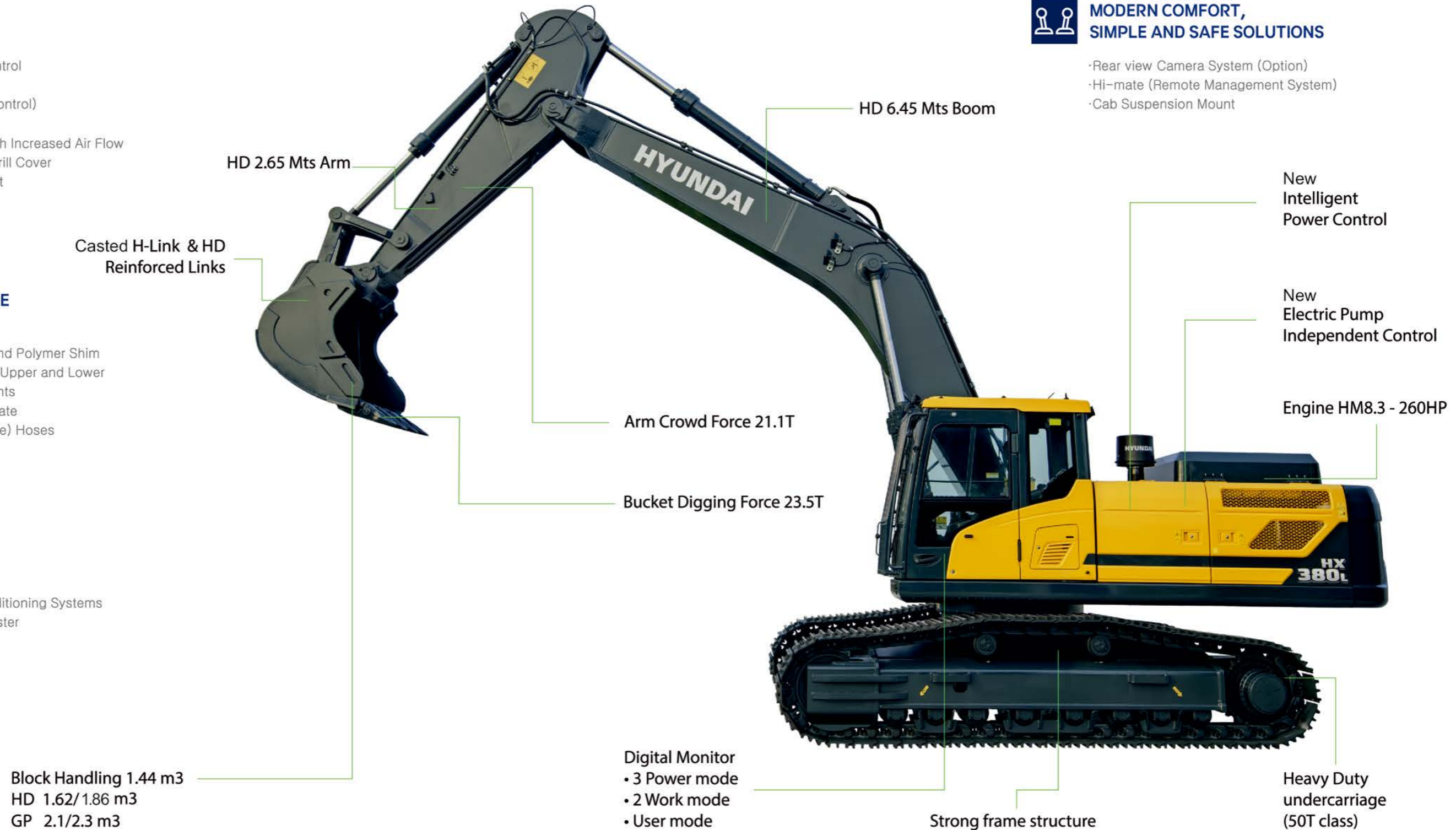
INFOTAINMENT FRONTIER

- New Front Side Air Conditioning Systems
- Intelligent and Wide Cluster
- New Audio System



MODERN COMFORT, SIMPLE AND SAFE SOLUTIONS

- Rear view Camera System (Option)
- Hi-mate (Remote Management System)
- Cab Suspension Mount



*Photo may include optional equipment.



*Photo may include optional equipment.

WORK MAX, WORTH MAX

Fuel Efficiency System, Allows Great Performance

The HX Series has an eco-friendly, high-performance engine which ensures both excellent fuel efficiency and high power. With outstanding operating performance proven by rigorous tests at various work sites, it will satisfy any customer's needs.

15% bigger screen from 7 to 8 inch is applied in HX Series.
More functions and better resolution are available with adding premium options.



Fuel Rate Information



IPC (Intelligent Power Control)

The IPC controls power depending on work environments. Its mode can be selected and released on the monitor. On the excavation mode, pump flow can be easily controlled by a lever, reducing fuel consumption.



Eco Gauge

Eco gauge enables economic operation of machines. The gauge level and color displays engine torque and fuel efficiency level. On top of that, the status of fuel consumption such as average rate and the total amount of fuel consumed is displayed. - Hourly and daily based fuel consumption can be checked in the detailed menu as well.



New Cooling System with Increased Air Flow

With the cooling module improving air inflow, the HX Series provides excellent cooling performance by increasing heat dissipation.



Enlarged Air Inlet with Grill Cover



Enlarged vent hole of the air inlet side cover and fine net grill to prevent penetration of foreign materials further improve durability.

Cycle Time Improvement

The HX Series provides higher productivity on the site by faster operation: it loads trucks up to 10% faster and levels up to 16% faster than the 9S Series.

New Variable Power Control

The HX Series minimizes equipment input and output control signals to improve fuel efficiency. Its three-stage power mode ensures the highest performance in any operating environment.

-  * P(power) mode : Maximizes speed and power of the equipment for heavy load work.
-  * S(standard) mode : Optimizes performance and fuel efficiency of the equipment for general load work.
-  * E(economy) mode : Improves the control system for light load work.

> MORE RELIABLE, MORE SUSTAINABLE

New Exterior Design for Robustness and Safety

The true value of the HX Series lies in its durability. The robust frame structure and the attachments show the real value of the HX Series in tough working environments and promise higher productivity.



Durable Cooling Module

The HX Series has a durable cooling module that passed stringent tests, demonstrating the highest productivity in tough working environments.



Reinforced Pin, Bush, and Polymer Shim

The HX Series improves lubricity of connecting parts between the equipment and attachments. Gaps with attachments are minimized by wear-resistant long-life pins, bushes, and polymer shims, supporting the highest performance with invariable durability.



Reinforced Durability of Upper and Lower Structure and Attachments

The upper and lower structure and attachments of the HX Series have higher durability than demanded on the site, as proven through numerous tests including load tests and virtual simulation. The wear resistance of the bucket has been improved by use of new material.



Wear Resistant Cover Plate

A wear-resistant cover plate is installed at the end of the arm to minimize abrasion on the connector between the arm and the bucket. Vibration reduction of buckets enables more stable operation even in high-load work.

Hi-grade (High-pressure) Hoses

The HX Series uses high-pressure hoses with improved heat and pressure resistance, greatly increasing the durability of the equipment.



Cabin space for drivers increased by

13%

(Compared to 9S Series)

310 mm
(9S Series)

340 mm
(HX Series)

*Photo may include optional equipment.



New Front Side Air-conditioning System

The ventilation is designed for both warm and cool air reaching to operators' faces. It could help operators create more neat and enjoyable atmosphere through indoor air circulation.

SPECIFICATIONS

Improved Instrument Panel for Easier Monitoring

Many electronic functions are concentrated in the most convenient spot for operators to improve work efficiency. The highly-advanced infotainment system, a product of HCE's intensive information technology development, enables both productivity and comfort while working! The HX Series is designed with the operator in mind.



Intelligent and Wide Cluster

The 8-inch interactive touch screen display of the HX Series is 15% larger than that of the previous model. The centralized switches on the display allow the operator to check the temperature outside the cab.



New Air Conditioning System

Front side Air Vent holes make operators more convenient and fresh through direct air flow to driver's face, foot and body.



Front Side Air-Vent

New Audio System

The radio player with a USB-based MP3 player, an integrated Bluetooth hands-free feature, and a built-in microphone allow for phone calls while at work and in transit. The radio player is conveniently located on the right side of the operator to allow for improved access.

HI MATE REMOTE MANAGEMENT SYSTEM

Our Unique remote management system allows customer to access machine operating information & obtain service & maintenance alerts at the touch of a button.

INCREASED PRODUCTIVITY

HI MATE empowers you to enhance the efficiency of your operations. Make better decisions by comparing the machine's operating time with its travelling, idling & breaker use duration.

CONVENIENT & EASY MONITORING

Enjoy round the clock & on the move access to your machine's information through the website or the mobile app.



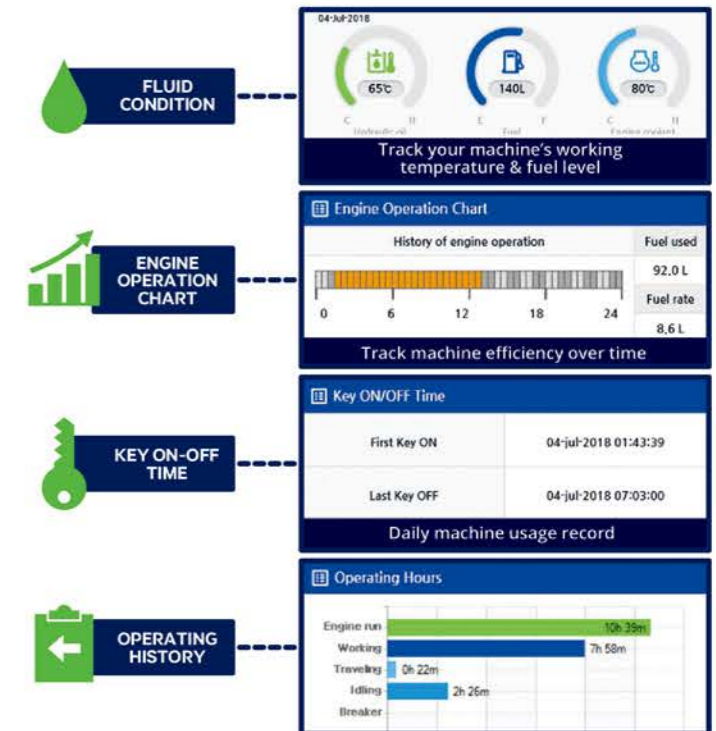
Maintenance Schedule

| Maintenance Interval | ALL | Search | Maintenance Request | Notice | Setting | Replace |
|--|-------|--------|---------------------|-------------|-------------|---------|
| <input type="checkbox"/> Engine Oil Filter | 500 | 2 | 1,354 | 06-Jul-2018 | 379 | |
| <input type="checkbox"/> Fuel Filter Element | 500 | 500 | 3 | 1,354 | 06-Jul-2018 | 379 |
| <input type="checkbox"/> Fuel Pre-Filter Element | 500 | 2 | 1,354 | 06-Jul-2018 | 379 | |
| <input type="checkbox"/> Hydraulic Tank Air Breather Element | 250 | 1 | 1,354 | 06-Jul-2018 | 129 | |
| <input type="checkbox"/> Air Cleaner Element | 500 | 2 | 1,354 | 06-Jul-2018 | 379 | |
| <input type="checkbox"/> Radiator Coolant | 2,000 | | | | 525 | |
| <input type="checkbox"/> Swing Bearing Gear & Pinion Grease | 1,000 | 1 | 1,354 | 06-Jul-2018 | 879 | |
| <input type="checkbox"/> Transmission Oil | 1,000 | | | | 475 | 48 |
| <input type="checkbox"/> Transmission Oil Filter | 1,000 | | | | 475 | 48 |

Create your own service schedule & reminder alerts

PROACTIVE MAINTAINANCE

Access your machine's service & maintenance history with the utmost convenience. Plan your service schedules intelligently with our regular reminders.



SECURITY & FLEET MONITORING

Protect your machines from theft or unauthorized use. HI MATE's GPS feature allows you to create a geo-fence & alerts you if the machine moves out of the defined boundary.

Alarm Notice

| Date | Time | Hourmeter | Alarm Type | Alarm | Error Code (SPN#) | Description | Trouble Shooting |
|--------------------------|-------------|-----------|------------|-------|-------------------|-----------------------------------|------------------|
| <input type="checkbox"/> | 02-Jul-2018 | 20:51 | 831 | W | 706 | (Warning) Battery Voltage low | |
| <input type="checkbox"/> | 30-Jun-2018 | 05:31 | 797 | W | 706 | (Warning) Battery Voltage low | |
| <input type="checkbox"/> | 28-Jun-2018 | 06:48 | 759 | W | 706 | (Warning) Battery Voltage low | |
| <input type="checkbox"/> | 26-Jun-2018 | 07:32 | 746 | W | 313 | (Warning) Engine Oil Pressure low | |
| <input type="checkbox"/> | 17-Jun-2018 | 00:05 | 584 | W | 706 | (Warning) Battery Voltage low | |
| <input type="checkbox"/> | 13-Jun-2018 | 15:59 | 515 | W | 313 | (Warning) Engine Oil Pressure low | |
| <input type="checkbox"/> | 09-Jun-2018 | 02:31 | 441 | W | 706 | (Warning) Battery Voltage low | |
| <input type="checkbox"/> | 08-Jun-2018 | 22:40 | 439 | W | 706 | (Warning) Battery Voltage low | |
| <input type="checkbox"/> | 07-Jun-2018 | 16:49 | 417 | W | 313 | (Warning) Engine Oil Pressure low | |

Simplified troubleshooting, with automated alarm system

ALARMS

Get notified of system alarms & protect your machine from critical faults & experience repairs.

RECEIVE LIVE NOTIFICATION THROUGH SMS & HIMATE APPLICATION ALERTS

PARTS & SUPPORT

HYUNDAI GENUINE PARTS

Developed in synergy with our machines, Hyundai parts and lubricants ensure that you get the high levels of performance, reliability and safety that come with the complete Hyundai experience. Enjoy the confidence and assurance of the most stringent testing procedures and the high quality manufacturing processes safeguarding your machine's health. Experience the versatility of our 200+ strong outlet network across India

WHY RISK IT?

Maximize profits and extend your machine's life.



BENEFITS OF USING GENUINE HYUNDAI PARTS AND LUBRICANTS

- Genuine Hyundai Parts meet strict specifications and standards in Chemistry, Microstructure and Tensile Strength.
- Benefit from the continuous improvements and advancements made by Hyundai's technical team
- Improved performance of hydraulics and engine components
- Enjoy greater productivity with higher uptime
- Higher resale values
- Reduced oil consumption and unexpected breakdowns
- Enhanced component life



SPECIFICATIONS

| ENGINE | |
|---------------|--|
| Maker / Model | HYUNDAI/HM8.3 |
| Type | 6 cylinder, water cooled, 4-cycle, turbocharged, charge air cooled, direct injection, mechanical controlled diesel engine. |
| Gross Power | 194 kW (260 HP) at 2,200 rpm |
| Net Power | 190 kW (255 HP) at 2,200 rpm |
| Max. Power | 195 kW (261 hp) at 2,000 rpm |
| Peak Torque | 1,150 Nm (848 lb.ft) at 1,300 rpm |
| Displacement | 8.3 (506 cu in) |

| HYDRAULIC SYSTEM | |
|--|--|
| MAIN PUMP | |
| Type | Variable displacement tandem axis piston pumps |
| Max. flow | 2x315 l/min |
| Sub-pump for pilot circuit | Gear pump |
| Cross-sensing and fuel saving pump system. | |

| HYDRAULIC MOTORS | |
|------------------|--|
| Travel | Two speed axial pistons motor with brake valve and parking brake |
| Swing | Axial piston motor with automatic brake |

| RELIEF VALVE SETTING | |
|-----------------------------|-------------------------------------|
| Implement circuits | 350 kgf/cm ² (4,980 psi) |
| Travel | 350 kgf/cm ² (4,980 psi) |
| Powerboost(boom,arm,bucket) | 380 kgf/cm ² (5,400 psi) |
| Swing circuit | 300 kgf/cm ² (4,270 psi) |
| Pilot circuit | 40 kgf/cm ² (570 psi) |
| Service valve | Installed |

| HYDRAULIC CYLINDERS | |
|-------------------------------|--|
| No. of cylinder bore X stroke | Boom: 2-Ø150×1,480 mm Arm: 1-Ø170×1,685 mm Bucket: 1-Ø140×1,285 mm |

| DRIVES & BRAKES | |
|--------------------------------|------------------------------------|
| Drive method | Fully hydrostatic type |
| Drive motor | Axial piston motor, in-shoe design |
| Reduction system | Planetary reduction gear |
| Max. drawbar pull | 32,011 kgf (70,572.17 lbf) |
| Max. travel speed (high / low) | 5km/hr (3.1mph)/3.1km/hr(1.92mph) |
| Gradeability | 35° (70%) |
| Parking brake | Multi wet disc |

| CONTROL | |
|---|--|
| Pilot pressure operated joysticks and pedals with detachable lever provide almost effortless and fatigueless operation. | |
| Pilot control | Two joysticks with one safety lever (LH): Swing and arm, (RH): Boom and bucket (ISO) |
| Traveling and steering | Two levers with pedals |
| Engine throttle | Electric, dial type |

| SWING SYSTEM | |
|---------------------------|---------------------------------------|
| Swing motor | Fixed displacement axial piston motor |
| Swing reduction | Planetary gear reduction |
| Swing bearing lubrication | Grease-bathed |
| Swing brake | Multi wet disc |
| Swing speed | 11.2 rpm |

| COOLANT & LUBRICANT CAPACITY | |
|-----------------------------------|-----------|
| | liter |
| Fuel tank | 600 |
| Engine coolant | 25 |
| Engine oil | 26.5 |
| Swing device | 11 |
| Final drive (each) | 8.0 (7.8) |
| Hydraulic system (including tank) | 414 |
| Hydraulic tank | 210 |

UNDERCARRIAGE
The X-leg type center frame is integrally welded with reinforced box-section track frames. The undercarriage includes 16.5mm track shoes lubricated rollers, idlers, track adjusters with shock absorbing springs and sprockets, and a track chain with triple grouser shoes.

| | |
|------------------------------------|---------------------|
| Center frame | X - leg type |
| Track frame | Pentagonal box type |
| No. of shoes on each side | 48 EA |
| No. of carrier roller on each side | 2 EA |
| No. of track roller on each side | 8 EA |
| No. of rail guard on each side | 3 EA |

OPERATING WEIGHT (APPROXIMATE)
Operating weight, including 6,450mm (21' 2") boom, 2,650mm (8' 7") arm, SAE heaped 1.44m³ (1.88yd³) bucket, counter weight 6600 kg lubricant, coolant, full fuel tank, full hydraulic tank, and all standard equipments

| OPERATING WEIGHT | | | |
|------------------|----------|------------------|------------------------------------|
| Shoes | | Operating weight | Ground pressure |
| Type | Width mm | kg | kgf/cm ² |
| Triple grouser | 600 | 37200 kg | 0.71 kg/cm ² (10.1 psi) |

AIR CONDITIONING SYSTEM
The air condition system for the machine contains the fluorinated greenhouse gas with global warming potential of R134a. (Global warming potential : 1,430)
The system hold 0.8 kg refrigerant consisting of a CO₂ equivalent 1.14 kg metric tonne. For more information, please refer to the manual.

BUCKET SELECTION GUIDE & DIGGING FORCE

BUCKETS

All buckets are welded with high-strength steel.



| Bucket Type | Capacity m³ | | Width mm (in) | Weight kg (lb) | Tooth | Recommendation mm(ft in) | |
|-------------|-------------|-------------|---------------|----------------|-------|-----------------------------------|-----------------------------------|
| | SAE heaped | CECE heaped | | | | 6,450 (21' 2") Boom 6600kg-CWT | 6,450 (21' 2") Boom 6600kg-CWT |
| GP | 1.44 | 1.27 | 1062 | 1393 | 4 | ● | ● |
| GP | 2.10 | 1.85 | 1489 | 1492 | 5 | ▲ | ▲ |
| GP | 2.32 | 2.04 | 1587 | 1823 | 6 | X | X |
| HD | 1.62 | 1.43 | 1268 | 1585 | 5 | ■ | ■ |
| HD | 1.86 | 1.64 | 1546 | 1764 | 5 | ▲ | ▲ |

● : Applicable for materials with density of 2,100 kg/m³ (3,500 lb/yd³) or less
 ○ : Applicable for materials with density of 1,800 kg/m³ (3,000 lb/yd³) or less
 ■ : Applicable for materials with density of 1,500 kg/m³ (2,500 lb/yd³) or less
 ▲ : Applicable for materials with density of 1,200 kg/m³ (2,000 lb/yd³) or less
 X : Not Recommended

ATTACHMENTS

Boom and arm are welded with a low-stress, full-box section design. 6.45m Boom and 2.65m & 3.2 m Arm

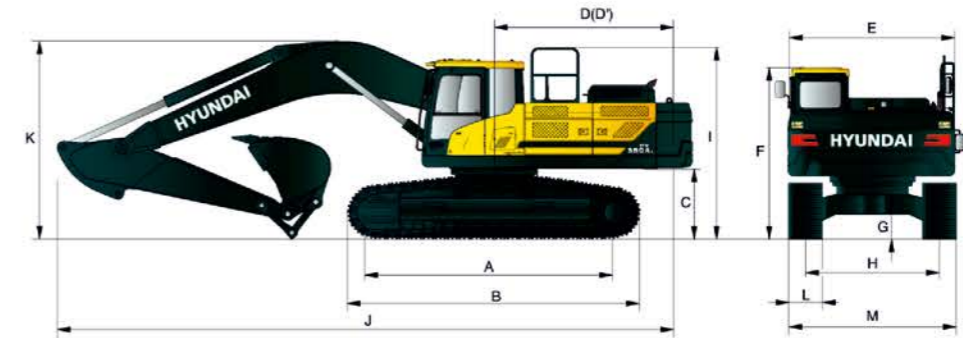
| DIGGING FORCE | | | | |
|----------------------|--------|------------|-----------------|--------------------|
| Boom | Length | mm (ft-in) | 6,450 (21' 2") | 6,450 (21' 2") |
| | Weight | kg (lb) | 3,030 (6,680) | 3,030 (6,680) |
| Arm | Length | mm (ft-in) | 2,650 (8' 7") | 3,200 (10' 6") |
| | Weight | kg (lb) | 1,257.5 (2,771) | 1,710.0 (3,771) |
| Bucket digging force | SAE | kN | 187.3 [204.4] | 170.5 [185.2] |
| | | kgf | 19,100 [20,840] | 17,384.3 [18874.4] |
| | | lbf | 42,110 [45,940] | 38325.7 [41610.8] |
| | ISO | kN | 215.7 [235.4] | 197.9 [214.8] |
| | | kgf | 21,600 [23,450] | 20170.8 [21899.8] |
| | | lbf | 48,500 [52,910] | 44469.0 [48280.6] |
| Arm crowd force | SAE | kN | 175.5 [191.5] | 163.8 [177.8] |
| | | kgf | 17,900 [19,530] | 16693.0 [18123.9] |
| | | lbf | 39,460 [43,060] | 36801.8 [39956.2] |
| | ISO | kN | 184.4 [201.1] | 171.7 [186.4] |
| | | kgf | 19,400 [21,100] | 17501.7 [9001.9] |
| | | lbf | 41,450 [45,220] | 38584.7 [41892.0] |

Note : Boom weight includes arm cylinder, piping, and pin
 Arm weight includes bucket cylinder, linkage, and pin

DIMENSION & WORKING RANGE

HX380L DIMENSIONS

6.45 m (21' 2"), BOOM and 2.65 m (8' 7") & 3.2 m (10.6) ARM

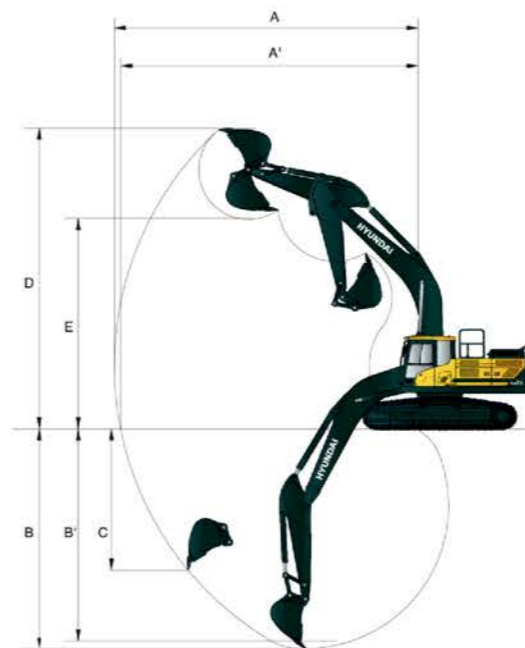


| unit : mm (ft in) | | |
|-------------------|-----------------------------------|----------------|
| A | Tumbler distance | 4,030 (13' 3") |
| B | Overall length of crawler | 4,940 (16' 2") |
| C | Ground clearance of counterweight | 1,200 (3' 11") |
| D | Tail swing radius | 3,570 (11' 9") |
| D' | Rear-end length | 3,510 (11' 6") |
| E | Overall width of upperstructure | 2,980 (9' 9") |
| F | Overall height of cab | 3,160 (10' 4") |

| | | |
|---|------------------------|-----------------|
| G | Min. ground clearance | 500 (1' 8") |
| H | Track gauge | 2,590 (8' 5") |
| J | Overall length | 11,340 (37' 2") |
| K | Overall height of boom | 3,760 (12' 3") |
| L | Track shoe width | 600 (24") |
| M | Overall width | 3,190 (10' 5") |

HX380L WORKING RANGE

unit : mm (ft in)



| Description | | 2.65m Arm | 3.2m Arm |
|-------------|----------------------------------|-----------------|------------------|
| A | Max. digging reach | 10,718 (35' 2") | 11,215 (36' 10") |
| A' | Max. digging reach on ground | 10,515 (34' 6") | 11,022 (36' 2") |
| B | Max. digging depth | 6,968 (22' 10") | 7,518 (24' 8") |
| B' | Max. digging depth (8' level) | 6,771 (22' 3") | 7,346 (24' 1") |
| C | Max. vertical wall digging depth | 6,331 (20' 9") | 6,876 (22' 7") |
| D | Max. digging height | 10,132 (33' 3") | 10,355 (33' 12") |
| E | Max. dumping height | 6,697 (21' 12") | 6,901 (22' 8") |
| F | Min. swing radius | 4,566 (14' 12") | 4,436 (14' 7") |

LIFTING CAPACITIES

Rating over-front Rating over-side or 360 degree

Rating over-front Rating over-side or 360 degree

LIFTING CAPACITIES

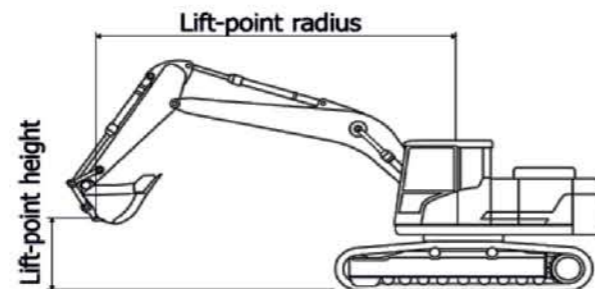
6.45 m (21' 2") boom, 2.65 m (8' 7") arm equipped with 600 mm (24") triple grouser shoe and 6,600kg (13230 lb) counterweight

| Lift-point height (m/ft) | | Lift-point radius | | | | | | | | | | At max. reach | | |
|--------------------------|----------|-------------------|------------------|------------------|------------------|------------------|---------------|-----------------|---------------|---------------|--|-----------------|---------------|----------------|
| | | 3.0m (9.8ft) | | 4.5m (14.8ft) | | 6.0m (19.7ft) | | 7.5m (24.6ft) | | 9.0m (29.5ft) | | Capacity | | Reach |
| | | | | | | | | | | | | | | m(ft) |
| 7.5m 24.6ft | kg lb | | | | | | | | | | | *6620 *14590 | 5960 13140 | 7.12 (23.4) |
| 6.0m 19.7ft | kg lb | | | | | | | *6730 *14840 | 5270 11620 | | | *6660 *14680 | 4510 9940 | 8.07 (26.5) |
| 4.5m 14.8ft | kg lb | | | *10830 *23880 | *10830 *23880 | *8460 *18650 | 7520 16580 | *7300 *16090 | 5020 11070 | | | 6740 14860 | 3740 8250 | 8.66 (28.4) |
| 3.0m 9.8ft | kg lb | | | *14100 *31090 | 10700 23590 | *9990 *22020 | 6870 15150 | *8080 *17810 | 4700 10360 | | | 6160 13580 | 3330 7340 | 8.96 (29.4) |
| 1.5m 4.9ft | kg lb | | | *16450 *36270 | 9690 21360 | *11360 *25040 | 6310 13910 | 8110 17880 | 4400 9700 | | | 5960 13140 | 3160 6970 | 8.99 (29.5) |
| 0.0m 0.0ft | kg lb | | | *17220 *37960 | 9320 20550 | 11360 25040 | 5970 13160 | 7870 17350 | 4190 9240 | | | 6100 13450 | 3210 7080 | 8.76 (28.8) |
| -1.5m -4.9ft | kg lb | *14720 *32450 | *14720 *32450 | *16910 *37280 | 9300 20500 | 11230 24760 | 5860 12920 | 7790 17170 | 4110 9060 | | | 6690 14750 | 3520 7760 | 8.26 (27.1) |
| -3.0m -9.8ft | kg lb | *21860 *48190 | 19790 43630 | *15670 *34550 | 9500 20940 | 11320 24960 | 5950 13120 | | | | | 8040 17730 | 4280 9440 | 7.41 (24.3) |
| -4.5m -14.8ft | kg lb | *17930 *39530 | *17930 *39530 | *13150 *28990 | 9920 21870 | *9630 *21230 | 6270 13820 | | | | | *9440 *20810 | 6140 13540 | 6.08 (20.0) |

6.45 m (21' 2") boom, 3.20 m (10' 6") arm equipped with 600 mm (24") triple grouser shoe and 6,600 kg (13230 lb) counterweight

| Lift-point height (m/ft) | | Lift-point radius | | | | | | | | | | At max. reach | | | | |
|--------------------------|----------|--------------------|--------------------|--------------------|--------------------|--------------------|--------------------|--------------------|-------------------|-------------------|-------------------|-------------------|----------------|-------------------|-------------------|----------------|
| | | 1.5m (4.9ft) | | 3.0m (9.8ft) | | 4.5m (14.8ft) | | 6.0m (19.7ft) | | 7.5m (24.6ft) | | 9.0m (29.5ft) | | Capacity | | Reach |
| | | | | | | | | | | | | | | | | m(ft) |
| 7.5m 24.6ft | kg lb | | | | | | | | | *5,990 *13,210 | *5,990 *13,210 | | | *6,050 *13,340 | 5,680 12,520 | 7.77 (25.5) |
| 6.0m 19.7ft | kg lb | | | | | | | | | *6,210 *13,690 | 6,010 13,250 | | | *6,150 *13,560 | 4,490 9,900 | 8.65 (28.4) |
| 4.5m 14.8ft | kg lb | | | | | | | *7,830 *17,260 | *7,830 *17,260 | *6,860 *15,120 | 5,740 12,650 | *6,370 *14,040 | 4,020 8,860 | *6,340 *13,980 | 3,830 8,440 | 9.20 (30.2) |
| 3.0m 9.8ft | kg lb | | | | | *13,040 *28,750 | 12,340 27,210 | *9,460 *20,860 | 7,860 17,330 | *7,740 *17,060 | 5,410 11,930 | *6,800 *14,990 | 3,860 8,510 | 6,230 13,730 | 3,470 7,650 | 9.48 (31.1) |
| 1.5m 4.9ft | kg lb | | | | | *15,840 *34,920 | 11,190 24,670 | *11,010 *24,270 | 7,260 16,010 | *8,620 *19,000 | 5,080 11,200 | 6,650 14,660 | 3,690 8,140 | 6,050 13,340 | 3,320 7,320 | 9.51 (31.2) |
| 0.0m 0.0ft | kg lb | | | | | *17,210 *37,940 | 10,630 23,440 | *12,070 *26,610 | 6,860 15,120 | 8,760 19,310 | 4,840 10,670 | 6,510 14,350 | 3,560 7,850 | 6,170 13,600 | 3,360 7,410 | 9.29 (30.5) |
| -1.5m -4.9ft | kg lb | *9,540 *21,030 | *9,540 *21,030 | *13,480 *29,720 | *13,480 *29,720 | *17,350 *38,250 | 10,470 23,080 | 12,400 27,340 | 6,680 14,730 | 8,620 19,000 | 4,710 10,380 | | | 6,670 14,700 | 3,630 8,000 | 8.82 (28.9) |
| -3.0m -9.8ft | kg lb | *14,670 *32,340 | *14,670 *32,340 | *19,830 *43,720 | *19,830 *43,720 | *16,510 *36,400 | 10,570 23,300 | *12,120 *26,720 | 6,690 14,750 | 8,640 19,050 | 4,730 10,430 | | | 7,760 17,110 | 4,260 9,390 | 8.03 (26.4) |
| -4.5m -14.8ft | kg lb | | | *20,490 *45,170 | *20,490 *45,170 | *14,510 *31,990 | 10,890 24,010 | *10,700 *23,590 | 6,890 15,190 | | | | | *8,970 *19,780 | 5,660 12,480 | 6.83 (22.4) |
| -6.0m -19.7ft | kg lb | | | | | *10,380 *22,880 | *10,380 *22,880 | | | | | | | *9,430 *20,790 | *9,430 *20,790 | 4.90 (16.1) |

- Notes:
- Lifting capacity are based on ISO 10567.
 - Lifting capacity of the HX Series does not exceed 75% of tipping load with the machine on firm, level ground or 87% of full hydraulic capacity.
 - The Lift-point is bucket pivot mounting pin on the arm (without bucket mass).
 - (*) indicates load limited by hydraulic capacity.



> NOTES

> NOTES
