

R210 SMART X PLUS

Hyundai Construction Machinery

* Photo may include optional equipment.



Head Office(Sales Office)
14F, GLOBAL R&D CENTER, 477 BUNDANG SUSEO-RO, BUNDANG-GU, SEONGNAM-SI, GYEONGGI-DO, 13553, KOREA

PLEASE CONTACT

Gross Power
140 HP @ 2000 rpm

Bucket Capacity
0.87 ~ 1.2 m³

Operating Weight
21,200 kgs

DESIGNED FOR SMART WORK

R210 SMART X PLUS

BEST-IN-CLASS PERFORMANCE

- Cyclonic Air Precleaner **NEW**
- Wide Range of Bucket **NEW**
- Advanced CAPO System
- Hydraulic Flow Summation
- Swing Priority
- Regeneration System
- Excellent Digging Forces

OPERATOR COMFORT

- Bluetooth FM Radio **NEW**
- Removable Type Floor Mat **NEW**
- LED Working Lamps **NEW**
- Spacious Cabin
- Fully Adjustable Seat
- Enhanced Visibility
- User Friendly Functionality

INCREASED MACHINE DURABILITY

- Superior Lubrication and Wear Protection **NEW**
- Polymer Shim **NEW**
- Stub Adapter **NEW**
- Strengthened Undercarriage
- Proven Upper Structure
- Forged Ring Body
- Reinforced Front Attachment



IMPROVED FUEL EFFICIENCY

- New ECO Mode
- Fuel Saving Kit
- Electro Hydraulic System
- Auto Deceleration System
- Fully Adjustable Seat
- Efficient Breaker Mode

SIMPLIFIED MAINTENANCE

- Fuel Filler Pump* **NEW**
- Easy Serviceability
- Extended Maintenance
- Large Capacity Fluid Tank
- Low Life Cycle Cost

PARTS & SUPPORT

- Remote Management System (Hi-MATE)
- Hyundai Genuine Parts
- Max Parts Availability
- On-Site Product Support

ENHANCED SAFETY

- Emergency Shutdown Switch* **NEW**
- Turbocharge Guard **NEW**
- Cabin Top Guard* **NEW**
- Beacon Lamp* **NEW**
- Swing Lock* **NEW**
- Seat Belt*

(* - Optional)

PERFORMANCE

PRIDE AT WORK

Hyundai construction equipment strives to build state-of-the-art earthmoving equipment to give every operator maximum performance, more precision, versatile machine preferences, and proven quality. New technologies designed to improve performance and precision, make the Hyundai excavator smooth, fast and easy to control. Take pride in your work with Hyundai!



ENGINE

The water cooled, 4 cycle diesel, 6 cylinder in line, direct injection turbocharged engine is built for power, reliability, efficiency.

The engine is manufactured to perform in wide range of heat, humidity and dust conditions without compromising on productivity.



R210 SMART X PLUS



HYDRAULIC SYSTEM

Electro Hydraulic Control System provides wide range of flow at various workloads for paramount productivity. Open center design of Main Control Valve (MCV) ensures fast response and maximum efficiency in tough conditions.

CHOICE OF OPERATING MODE

Working Mode	Advantage
P Mode	<ul style="list-style-type: none"> • Maximum Power • Fast Cycle time
S Mode	<ul style="list-style-type: none"> • Balance between power and fuel efficiency
Eco Mode	<ul style="list-style-type: none"> • Better fuel efficiency
Breaker Mode	<ul style="list-style-type: none"> • Sets pump flow to optimal level and boosts efficiency

BEST-IN-CLASS DIGGING FORCES

Higher output even in tough working conditions

- **Bucket - 15700 Kgf**
- **Arm - 12600 Kgf**



BEST-IN-CLASS TRAVEL PERFORMANCE

- Higher Traction Force
- Dual Travel Option
- High Maneuverability

Traction Force : 21100 kgf

EFFICIENT COMBINED OPERATION

Inbuild **Flow Summation** system and **Swing Priority** function leads to faster swing cycle results in excellent output

FUEL EFFICIENCY



IMPROVED FUEL EFFICIENCY

Advanced CAPO System, Newly Designed CMCU, Power & Working Mode options results in excellent fuel efficiency.

FUEL SAVING KIT

- Monitor undue load and cut down losses.
- Provides better fuel efficiency

NEGATIVE FLOW CONTROL

Optimum balance between pump and engine output for better fuel efficiency



ONE TOUCH IDLE & AUTO DECELERATION

Prevents fuel losses by reducing engine rpm during no-load condition

EXCLUSIVE BREAKER MODE

Excellent fuel saving due to exclusive power for breaker operation



ARM REGENERATION SYSTEM

- Smooth Operation
- Prevent Cavitation
- Increased Performance & Fuel Efficiency



NEW ECO MODE

MOBILE CHARGING POINT

MULTI LANGUAGE

INSTRUMENT PANEL

The user-friendly multi language option cluster making it easy to check all critical systems like

- Hydraulic oil temperature,
- Coolant temperature
- Fuel level
- Self diagnostic checks
- Maintenance management

to optimizing productivity needs ensuring fuel efficiency

OPERATOR COMFORT

OPERATOR DELIGHT

More space, better visibility, powerful air-conditioning and adjustable fully suspension seat, easy to access controls ensure that the operator can work for longer hours without stress or fatigue in the comfortable and safe working environment.

360 degree visibility, fully open sunroof, added side lamp & mirror ensure comfortable, safe working environment.



OPERATOR SEAT

- Easily adjustable fully suspension seat with adjustable arm rest
- Operator seat belt



SPACIOUS CABIN

- More head room, large space, large door for easy entry and exit

AIR CONDITIONER

- High Performance Air Conditioner
- Improved AC Ducting
- Water Bottle Cooling System

REMOVABLE TYPE FLOOR MAT



- AC Front Vent
- Hour Meter
- 24V Socket

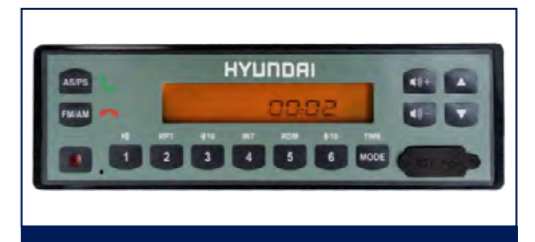
LED LAMP NEW



SUN VISOR (OPTIONAL)



INTEGRATED AUDIO SYSTEM WITH BLUETOOTH NEW



RELIABILITY



REINFORCED FRONT ATTACHMENTS

Use of specialized advance steel plates and reinforced design for higher strength and durability

HEAVY DUTY BUCKET WITH STUB ADAPTER **NEW**

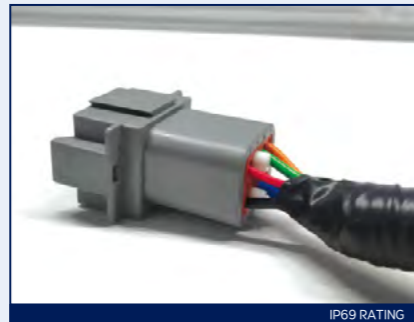
RUGGED UNDERCARRIAGE

X frame provides excellent resistance to torsional bending to enhance structure life



RELIABLE ELECTRICALS

- Dust and water proof connectors
- Longer component life



SWING & TRAVEL SYSTEM

Highly efficient Hyundai designed Swing and Travel System ensure maximum reliability and performance.



REINFORCED IDLER FRAME



LOWER FRAME BELLY GUARD



AIR PRE-CLEANER **NEW**

- Improves engine performance
- Removes dirt and debris from air before entering air filter
- Improves air filter life
- Low maintenance cost



CASTED BUCKET CONTROL LINK



FORGED RING BODY



SERVICEABILITY

LEADING SERVICE INTERVAL

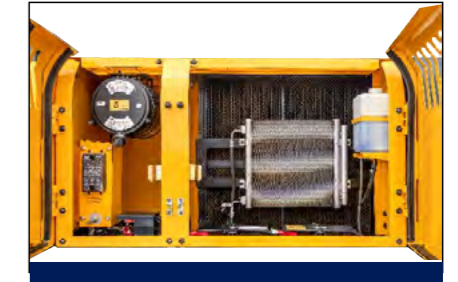
More efficient cooling system which extend service intervals, minimize operating cost and reduce machine down time.

CHANGE INTERVAL

Hydraulic Oil	5000 hrs
Hydraulic Filter	1000 hrs
Engine Oil	500 hrs
Engine Filter	500 hrs

IMPROVED COOLING EFFICIENCY

- Radiator and oil cooler are arranged side by side to maximize efficiency
- Easily accessible from ground level to clean



LARGE LCD MONITOR

Operator can check the machine's vital signs without any difficulties

- **Maintenance Management**
Proactive maintenance
- **Self Diagnostic**
Reduces down time
- **Warning Indicator**
Ensures safe working

DURABLE MOUNTING PIN BUSH



FUEL FILLER PUMP **NEW**



DIMPLE BUSH **NEW**



HINGED TYPE FRONT GLASS GUARD FOR EASY CLEANING

EASY ACCESSIBILITY

Easy access for maintenance means regular checks get done faster. Hyundai's SMART PLUS machines feature easy service access to increase uptime and reduce operating costs.



SAFETY

SAFETY - PEACE OF MIND AND OPERATOR CONVENIENCE

Cabin is integrally welded with low-stress using high strength steel to provide enhanced protection. Handrails and steps are provided for easy operation. Engine fan guard avoid chances of accidental injury.



COUNTER BALANCE VALVE

Works as a hydrostatic brake and prevents machine against accidental roll down in steep gradients.



BOOM & ARM HOLDING SYSTEM

Prevent attachments from drifting against gravity due to prolonged overhanging.



ANTI RESTART FUNCTION

Prevents starter from damage during engine operation.

AUTO ENGINE OVERHEAT & WARM UP FUNCTION



BATTERY DISCONNECT SWITCH



LOWER BELLY GUARD



GREASE NIPPLE WITH CAP **NEW**



POSITIVE LOCKING CLAMP **NEW**



TANK SAFETY COVER



TURBOCHARGE GUARD **NEW**



EMERGENCY SHUTDOWN SWITCH **NEW**



FIRE EXTINGUISHER **NEW**



PARTS & SUPPORT

HYUNDAI GENUINE PARTS

Developed in synergy with our machines, Hyundai parts and lubricants ensure that you get the high levels of performance, reliability and safety that come with the complete Hyundai experience. Enjoy the confidence and assurance of the most stringent testing procedures and the high quality manufacturing processes safeguarding your machine's health. Experience the versatility of our 200+ strong outlet network across India.

WHY RISK IT?

Maximize profits and extend your machine's life.



BENEFITS OF USING GENUINE HYUNDAI PARTS AND LUBRICANTS

- Genuine Hyundai Parts meet strict specifications and standards in Chemistry, Microstructure and Tensile Strength.
- Benefit from the continuous improvements and advancements made by Hyundai's technical team.
- Improved performance of hydraulics and engine components.
- Enjoy greater productivity with higher uptime
- Higher resale values.
- Reduced oil consumption and unexpected breakdowns.
- Enhanced component life.



HI-MATE

REMOTE MANAGEMENT SYSTEM

Our Unique remote management system allows customers to access machine operating information & obtain service & maintenance alerts at the touch of a button.

INCREASED PRODUCTIVITY

HI MATE empowers you to enhance the efficiency of your operations. make better decisions by comparing the machine's operating time with its travelling, idling & breaker use duration.

CONVENIENT & EASY MONITORING

Enjoy round the clock & on the move access to your machine's information through the website or the mobile app.



SECURITY & FLEET MONITORING

Protect your machines from theft or unauthorized use. HI MATE's GPS feature allows you to create a geo-fence & alerts you if the machine moves out of the defined boundary.



Item	Maintenance Interval	Default	Setting	Used	Hours	Next Date	Remarks
Engine Oil	500	500	22	838	29-Mar-2018		
Travel Reduction Gear Case	1,000	300	6	400	19-Mar-2018		
Swing Reduction Gear Case	1,000	200	0	400	19-Mar-2018		
Hydraulic Oil	5,000	350	0	154	07-Feb-2018		
Pilot Line Filter	1,000	220	0	540	02-Feb-2018		
Hydraulic Tank Drain Filter	1,000	220	0	540	02-Feb-2018		

PROACTIVE MAINTENANCE

Access your machine's service & maintenance history with the utmost convenience. Plan your service schedules intelligently with our regular reminders.

Date	Time	Message	Alarm Type	Alarm	Error Code (2994)	Description	Dashboard
15-Apr-2018	07:16	110	W	011	011	Warning! Fuel level low	
14-Apr-2018	17:39	809	W	011	011	Warning! Fuel level low	
14-Apr-2018	17:23	481	W	011	011	Warning! Fuel level low	
19-Apr-2018	07:14	484	W	011	011	Warning! Battery Voltage low	
08-Apr-2018	07:40	476	W	011	011	Warning! Fuel level low	
08-Apr-2018	06:58	479	W	011	011	Warning! Fuel level low	
08-Apr-2018	11:34	469	W	011	011	Warning! Engine Oil Pressure low	

ALARMS

Get notified of system alarms & protect your machine from critical faults & experience repairs.

SPECIFICATION

Engine

Maker/Model	Cummins6BT5.9-C		
Rated flywheel horse power	SAE	J1995 (Gross) J1349 (Net)	140HP (104KW) @2000rpm 136HP (101KW) @2000rpm
Max Torque Displacement	57.6kgf.m @1600rpm 5880cc		

Hydraulic System

Main pump	Two variable displacement piston pumps		
Type	Two variable displacement piston pumps		
Max. flow	2x220 lpm		
Sub-pump for pilot circuit	Gear pump		
Cross-sensing & fuel saving pump system			

Hydraulic Motors

Travel	Two speed axis piston motor with counter balance valve and parking brake
Swing	Axial piston motor with automatic brake

Relief Valve Settings

Implement Circuit	330kgf/cm ²
Travel	330kgf/cm ²
Swing Circuit	240kgf/cm ²
Pilot Circuit	35kgf/cm ²
Service valve	Installed

Coolant & Lubricant Capacity

REFILLING	LITER
Fuel tank	340
Engine coolant	35
Engine oil	21
Swing device	5
Final drive (each)	6.0
Hydraulic system / Hydraulic tank	280/150

Drives & Brakes

Drive method	Fully hydrostatic type
Drive motor	Axial piston motor in-shoe design
Reduction system	Planetary reduction gear
Max.drawbar pull	21100kgf (46500 lbf)
Max.travel speed (high/low)	5.3kmph/3.4kmph
Gradeability	35 Degree (70%)
Parking brake	Multi wet disc

Undercarriage

X-Leg type centre frame is integrally welded with reinforced box section track frames. The undercarriage includes lubricated rollers, idlers, track adjusters with shock absorbing spring and sprockets and trackchain with triple grouse shoes.

Centre frame	X-leg type
Track frame	Pentagonal box type
No. of shoes on each side	46
No. of carrier rollers each side	2
No. of track rollers each side	7
No. of rail guard each side	1

Swing System

Swing motor	Axial piston motor
Swing reduction	Planetary gear reduction
Swing bearing lubrication	Grease bathed
Swing brake	Multi wet disc
Swing speed	11 rpm

Operating Weight

Shoe Width mm (in)	Operating weight kg (lb)	Ground pressure kgf/cm ² (psi)
600 mm (24")	21,200 (46,738)	0.48 (6.83)

Dimensions

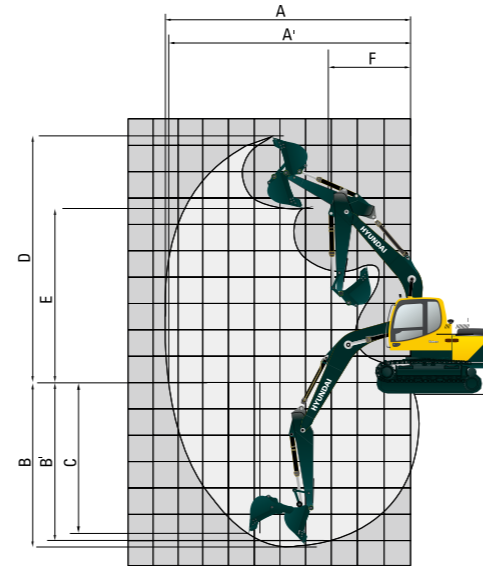
Dimension	Value (mm)
A	Tumbler distance 3370
B	Overall length of crawler 4160
C	Ground clearance of counter weight 1060
D	Tail swing radius 2845
D'	Rear-end length 2770
E	Overall width of upper structure 2700
F	Overall height of cabin 2920
G	Min. ground clearance 480
H	Track gauge 2200
I	Overall length 9610
J	Overall height of boom 3210
K	Track shoe width 600
L	Overall width 2800

SPECIFICATION

Working Ranges

(mm)

Arm length		2000	*2400	2920
A	Max. digging reach	9,102 (29'10")	9,477 (31'1")	9,953 (32'8")
A'	Max. digging reach on ground	8,929 (29'4")	9,312 (30'7")	9,796 (32'2")
B	Max. digging depth	5,836 (19'2")	6,236 (20'6")	6,756 (22'2")
B'	Max. digging depth(8ft level)	5,596 (18'4")	6,028 (19'9")	6,576 (21'7")
C	Max. Vertical wall digging depth	4,805 (15'9")	5,200 (17'1")	5,837(19'2")
D	Max. digging height	9,027 (29'7")	9,242 (30'4")	9,496(31'2")
E	Max. dumping height	6,253 (20'6")	6,466 (21'3")	6,704(21'12")
F	Min. swing radius	3,789 (12'5")	3,680 (12'1")	3,696(12'2")

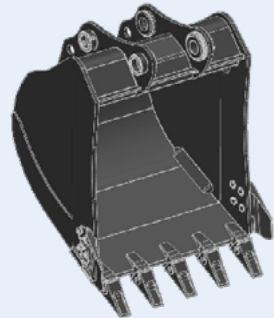


Bucket Digging Force 15700 kgf
Arm Crowd Force(2.4m) 12600 kgf

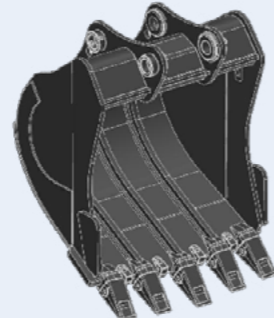
BUCKETS

All buckets are welded with high-strength steel.

GENERAL PURPOSE



HEAVY DUTY



Capacity - M ³			Width - mm	Weight - kg	Tooth EA	Recommendation		
Bucket Type	SAE Heaped	CECE heaped				5.68m Boom 3.8t CWT		
			2.0m Arm	2.4m Arm	2.92m Arm			
GP	0.92	0.81	1032	738	5	●	●	■
GP	1.00	0.88	1116	797	5	●	■	■
GP	1.05	0.92	1132	803	5	●	■	■
GP	1.20	1.05	1283	802	5	■	■	■
HD	0.87	0.76	1147	974	5	●	●	■
HD	0.92	0.81	1041	1033	5	●	■	■
HD	0.95	0.83	1091	1063	5	●	■	■
HD	1.10	0.96	1256	1127	5	■	■	▲

● : Applicable for materials with density of ≤ 2,000 kg/m³

■ : Applicable for materials with density of ≤ 1,600 kg/m³

▲ : Applicable for materials with density of ≤ 1,100 kg/m³

SPECIFICATION

ATTACHMENT

Boom and arm are of all-welded with a low-stress, full-box section design. 5.68m (18'8") mono boom and 2.0m (6'7"), 2.4m (7'10") 2.92m(9'7") Arm are available. Buckets are all-welded, high-steel implements.

DIGGING FORCE

Arm	Length	mm(ft.in)	2,000 (6'7")	*2,400 (7'10")	2,920 (9'7")
			Weight	kg(lb)	614 (1,354)
Bucket Digging Force	SAE	kN	134	134	134
		kgf	13,600	13,600	13,700
		lbf	30,000	30,000	30,200
	ISO	kN	154	154	155
		kgf	15,700	15,700	15,800
		lbf	34,700	34,700	34,800
Arm Crowd Force	SAE	kN	140	118	99
		kgf	14,300	12,000	10,100
		lbf	31,500	26,500	22,300
	ISO	kN	148	123	104
		kgf	15,100	12,600	10,500
		lbf	33,200	27,700	23,300

*Standard arm

STANDARD OPTIONAL LIST

NOTES

Standard Equipment

ISO Standard Cabin
All-weather steel cab with all-around visibility
Safety glass windows
Sliding fold-in front window
sliding side window
Air-conditioner
Accessory box
Computer Aided Power Optimization
(New CAPO) system
3-power mode,2-work mode
Auto deceleration & one touch deceleration system
Auto engine overheat prevention system
Self diagnostic system
Centralized monitoring
LCD display
Engine speed
Clock & Error code
Mobile charging point
Fuel level indicator
Engine coolant temperature indicator
Hyd. Oil temperature indicator

Warning

Fuel level
Engine oil pressure
Engine coolant temperature
Hyd. Oil temperature
Low battery
Air cleaner clogging
Door and cab locks,one key
One outside rearview mirror
Fully adjustable suspension seat
Pilot-operated joystick
Two front working lights and two cabin work lights
LED working Lamps
Cyclonic pre Air cleaner
Removable type floor mat
Electric horn
Batteries(2 x 12V x 100AH)
Battery master switch
Removable clean out screen for oil cooler
Automatic swing brake

Removable reservoir tank
24V Power Socket
Fuel pre-filter
Boom holding system
Arm holding system
Counter weight(3800 kg)
Mono boom(5.68m, 18'8")
Arm (2.4m,7'10")
Standard bucket (0.92 GP cu.m)
Track shoes(600mm, 24")
Track rail guard
Cabin front protector
Bluetooth FM Radio/USB player
Operator Kit
Tool Kit
Remote management system(Hi-Mate)

Optional Equipment

Beacon lamp
Single acting piping kit
Fuel Refilling Pump
Travel alarm
Operator seat belt
Emergency shutdown switch
Cabin top guard
Swing lock
Fire Extinguisher
Sun visor for cabin inside
12 mm HD Track Chain
Various optional Arms
Arm (2.0 m)
Arm (2.92 m)