

STANDARD / OPTIONAL LIST

Standard Equipment

ISO standard cabin

- All-weather steel cab with all-around visibility
- Safety glass windows
- Sliding fold-in front window
- Sliding side window
- Lockable door
- Accessory box & Ashtray

Computer Aided Power Optimization (New CAPO) system

- 3-power mode, 2-work mode
- Auto deceleration & one touch deceleration system
- Auto overheat prevention system
- Self diagnostic system
- Centralized monitoring
- LCD display
- Engine Speed
- Clock and Error code
- Mobile Charging Point
- Fuel level indicator
- Engine coolant temperature indicator
- Hyd. oil temperature indicator

Warning

- Fuel level
- Engine oil pressure
- Engine coolant temperature
- Hyd. oil temperature
- Low battery
- Air cleaner clogging
- Tool kit
- Door and cab locks, one key
- One outside rearview mirror
- Fully adjustable suspension seat
- Pilot-operated joystick
- Three front working lights and two cabin work lights
- Electric horn
- Batteries (2 x 12V x 72 AH)
- Battery master switch
- Removable clean out screen for oil cooler
- Automatic swing brake
- 24V Power socket

- Removable reservoir tank
- Fuel pre-filter
- Boom holding system
- Arm holding system
- Counter weight (1900kg)
- Mono boom (4.6m, 15' 1")
- Arm (2.1m, 6' 11")
- Track shoes (600mm)
- Track rail guard
- Operator kit
- FM radio
- Cabin lights
- General Purpose bucket (0.72 m³)
- Fan (for non AC Cabin)

Optional Equipment

- Single acting piping kit
- Travel alarm
- Beacon Lamp
- Seat Belt
- Heavy duty bucket (0.65m³)
- Track shoe (500mm)
- Arm (2.5m, 8' 20")
- Rock Breaker
- LED Work Lamp
- Cabin Front Glass Protector
- Hi-Mate (Remote Management System)
- Air Conditioner



R150LS **SMART PLUS**



Head Office(Sales Office)
14F, GLOBAL R&D CENTER, 477 BUNDANG SUSEO-RO, BUNDANG-GU, SEONGNAM-SI, GYEONGGI-DO, 13553, KOREA

PLEASE CONTACT

Gross Power
105 HP @ 2200 rpm

Bucket Capacity
0.65~0.72 m³

Operating Weight
14200 kgs

DESIGNED FOR SMART WORK

R150LS

SMART *plus*

BEST-IN CLASS PERFORMANCE

- Advanced CAPO system
- Hydraulic flow summation
- Swing Priority
- Regeneration system
- Excellent digging forces



OPERATOR COMFORT

- Spacious cabin
- Multi Adjustable Premium Seat
- Enhanced visibility
- 7" Intelligent display



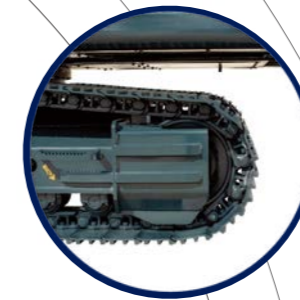
IMPROVED FUEL EFFICIENCY

- Electro hydraulic control system
- Auto deceleration system
- Breaker mode for enhanced efficiency
- Fuel saving kit



ENHANCED MACHINE DURABILITY

- Longest undercarriage in class
- Proven and durable structure
- HD reinforced front attachment
- 600mm Track chain
- New design side cowl support
- New design muffler hood support



SIMPLIFIED MAINTENANCE

- Easy serviceability
- Extended maintenance interval
- Low life cycle cost
- Bigger size radiator for higher cooling efficiency
- New design Side cowl for improved heat dissipation



PARTS & SUPPORT

- Hyundai genuine parts
- Max parts availability
- On-site product support
- Remote Management System (Hi-Track)



PERFORMANCE

USER ADVANTAGES

Lower fuel and oil consumption as compared to other engines in this class.

Components like fuel pump, lube oil and lube oil filters on one side of the machine helps for easy maintenance.

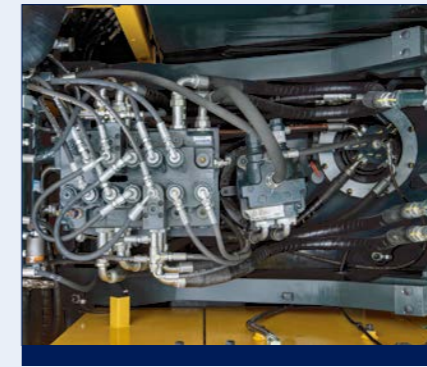
Highly acceptable Hyundai engine with easy parts availability.



ENGINE

The four cylinder, turbocharged, water cooled diesel engine is built for heavy operation, maximum economy & reliability. The power units are produced to meet the high precision and quality standards.

R150LS SMART PLUS



HYDRAULIC SYSTEM

Hydraulic pressure sensing system provides wide range of flow at various workloads. Open center Main Control Valve (MCV) ensures faster response and maximum efficiency. Travel & swing motor provides excellent mobility and faster cycle time.

CHOICE OF OPERATING MODE

Working Mode	Advantage
P Mode	<ul style="list-style-type: none"> • Maximum Power • Fast Cycle time
S Mode	<ul style="list-style-type: none"> • Balance between power and fuel efficiency
Eco Mode	<ul style="list-style-type: none"> • Better fuel efficiency
Breaker Mode	<ul style="list-style-type: none"> • Sets pump flow to optimal level and boosts efficiency

EXCELLENT DIGGING FORCES

Higher output even in tough working condition

- Bucket - 11290 kgf
- Arm - 8580 kgf



POWER BOOST SYSTEM

Increased digging forces by 10% than normal system pressure for short duration.

REDESIGNED MCV

- Redesigned wider oil galleries
- Quick response and better power output



SWING PRIORITY

- Boost higher hydraulic flow to swing system
- Improved cycle time.



FUEL EFFICIENCY



IMPROVED FUEL EFFICIENCY

New CMCU with auto deceleration function, Advanced CAPO system, Power & working mode options and Fuel saving kit results in excellent fuel efficiency.



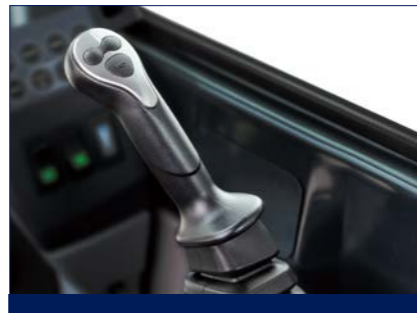
EXCLUSIVE BREAKER MODE

Excellent fuel saving due to exclusive power for breaker operation



PUMP FLOW CONTROL SYSTEM

Reduced pump flow during machine idle condition to minimize power loss.



ONE TOUCH IDLE & AUTO DECELERATION

Prevents fuel losses by reducing engine rpm during no-load condition

ARM REGENERATION SYSTEM

- Smooth operation
- Prevent cavitation
- Increased performance & fuel efficiency



OPERATOR COMFORT

COMFORTABLE OPERATOR ENVIRONMENT

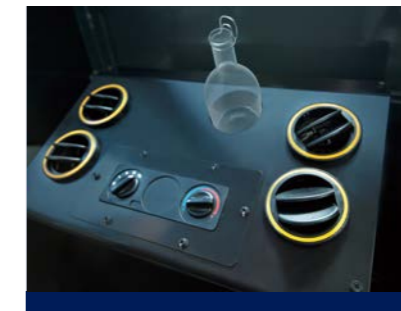
The ergonomically placed control levers and seat can be adjusted to provide maximum operator comfort.

The seat is fully adjustable for optimum operating position, reducing operator fatigue.

360 degree visibility for better and safe operations.



AIR CONDITIONING SYSTEM (OPTIONAL)



- High cooling performance
- Improved AC ducting
- Water bottle cooling system

Operator comfort results in increased productivity

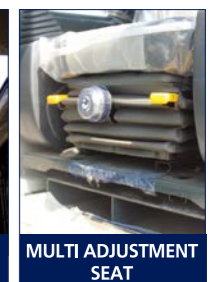
OTHER FEATURES



MP3/USB PLAYER WITH REMOTE



SUNROOF WITH HINGED COVER



MULTI ADJUSTMENT SEAT



10 STAGE RPM DIAL



CABIN TOP LIGHT



SMOOTH TRAVEL PEDAL, MOBILE HOLDER, CHARGING SOCKET

INSTRUMENT PANEL

The user-friendly multi language option cluster making it easy to check all critical systems like

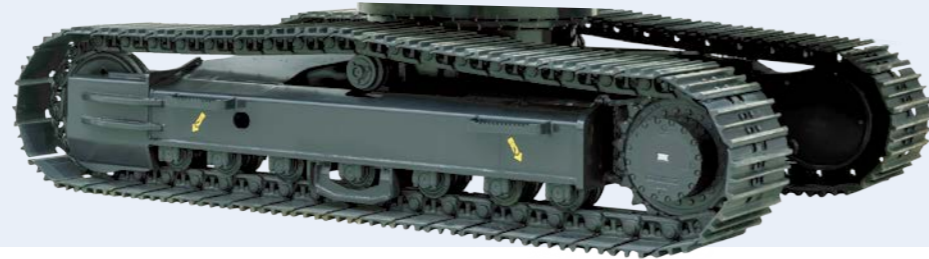
- Hydraulic oil temperature,
- Coolant temperature
- Fuel level
- Self diagnostic checks
- Maintenance management

to optimizing productivity needs ensuring fuel efficiency

RELIABILITY

STRONG & STABLE LOWER FRAME

Use of specialized steel plates and reinforced design for higher strength and durability.



HD FRONT STRUCTURE

- Thicker plates
- Casted component
- Internal baffle plate
- Added wear plates on arm
- Bucket pin direction change for operator visibility



REINFORCED IDLER GUIDE AREA



RUGGED UNDERCARRIAGE

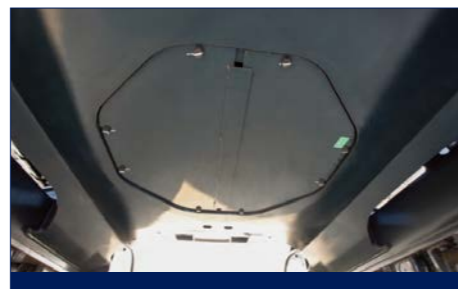
- X frame provides excellent resistance to torsional bending to enhance structure life.
- Track shoe width upgraded to 600 for better manoeuvrability and stability.



REINFORCED BUCKET

RELIABLE COMPONENTS

Swing system and travel system exclusively designed by Hyundai ensuring reliable performance.



BELLY GUARD



TRACK LINKS



RELIABLE ELECTRICALS

- Dust and water proof connectors
- Longer component life

SERVICEABILITY

EASY ACCESSIBILITY

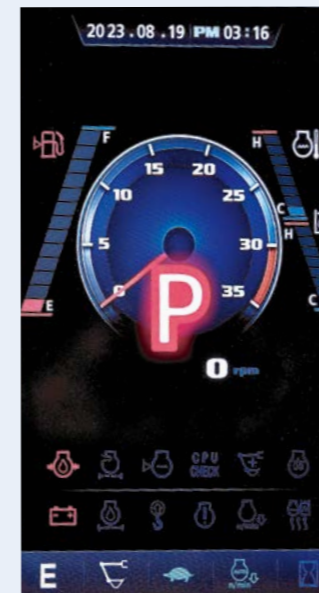
Easy access for maintenance means regular checks get done faster. Hyundai's SMART PLUS machines feature easy service access to increase uptime to reduce operating costs.

LEADING SERVICE INTERVAL

More efficient cooling system which extend service intervals, minimize operating cost and reduce machine down time.

CHANGE INTERVAL

Hydraulic oil	5000 hrs
Hydraulic filter	1000 hrs
Engine oil	500 hrs
Engine Filter	500 hrs



LARGE LCD MONITOR

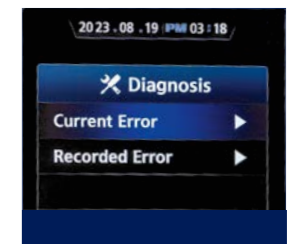
Operator can check the machine's vital signs without any difficulties

- **Self Diagnostic**
Reduces down time
- **Maintenance Management**
Proactive maintenance
- **Warning Indicator**
Ensures safe working

MAINTENANCE MANAGEMENT

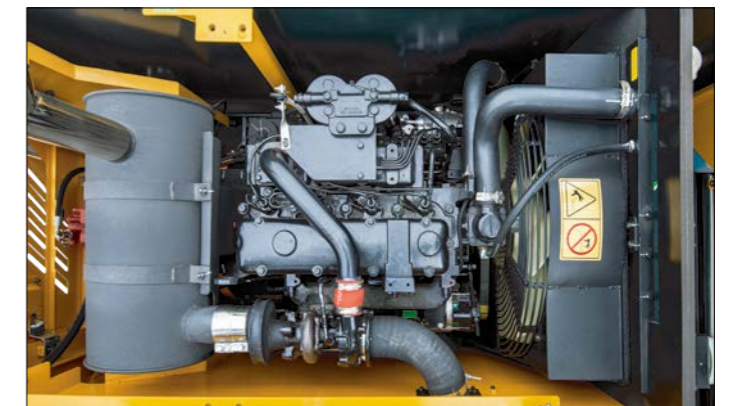


SELF DIAGNOSTIC SYSTEM



EASY ENGINE MAINTENANCE

- Redesigned Radiator- Oil cooler assembly. Bigger size radiator for higher cooling efficiency
- Longer engine & hydraulic component life
- Servicing the engine and the hydraulics has been considerably simplified



SAFETY

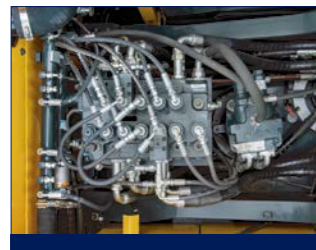
SAFETY - PEACE OF MIND AND OPERATOR CONFIDENCE

Cabin is integrally welded with high strength steel to provide enhanced protection. Handrails and steps are provided for easy operation. Anti-slip pads provide safety against skidding while climbing machine.



COUNTER BALANCE VALVE

Works as a hydrostatic brake and prevents machine against accidental roll down in steep gradients.



BOOM & ARM HOLDING SYSTEM

Prevent attachments from drifting against gravity due to prolonged overhanging.



ANTI RESTART FUNCTION

Prevents starter from damage during engine operation



AUTO ENGINE OVERHEAT PREVENTION



BATTERY DISCONNECT SWITCH



AIR BREATHER GUARD



UPPER UNDER COVER

PARTS & SUPPORT

HYUNDAI GENUINE PARTS

Developed in synergy with our machines, Hyundai parts and lubricants ensure that you get the high levels of performance, reliability and safety that come with the complete Hyundai experience. Enjoy the confidence and assurance of the most stringent testing procedures and the high quality manufacturing processes safeguarding your machine's health. Experience the versatility of our 200+ strong outlet network across India.

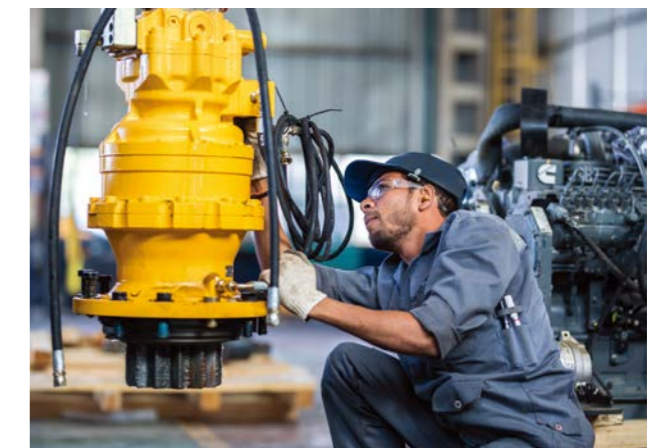
WHY RISK IT?

Maximize profits and extend your machine's life.



BENEFITS OF USING GENUINE HYUNDAI PARTS AND LUBRICANTS

- Genuine Hyundai Parts meet strict specifications and standards in Chemistry, Microstructure and Tensile Strength.
- Benefit from the continuous improvements and advancements made by Hyundai's technical team
- Improved performance of hydraulics and engine components
- Enjoy greater productivity with higher uptime
- Higher resale values
- Reduced oil consumption and unexpected breakdowns
- Enhanced component life



Our Unique remote management system allows customers to access machine operating information & obtain service & maintenance alerts at the touch of a button.

INCREASED PRODUCTIVITY

Hi MATE empowers you to enhance the efficiency of your operations. Make better decisions by comparing the machine's operating time with its travelling, idling & breaker use duration.

CONVENIENT & EASY MONITORING

Enjoy round the clock & on the move access to your machine's information through the website or the mobile app.



SECURITY & FLEET MONITORING

Protect your machines from theft or unauthorized use. Hi MATE's GPS feature allows you to create a geo-fence & alerts you if the machine moves out of the defined boundary.

Item	Maintenance Interval	Default	Setting	Total	Hours	Replace Date	Alert
Engine Oil	500	62	22	838	29-Mar-2018	100	OK
Transit Reduction Gear Case	1,000	300	8	400	19-Jan-2018	100	OK
Swing Reduction Gear Case	1,000	200	0	400	19-Jan-2018	100	OK
Hydraulic Oil	5,000	250	0	104	05-Feb-2018	100	OK
Pilot Line Filter	1,000	220	0	340	02-Feb-2018	100	OK
Hydraulic Tank Drain Filter	1,000	250	0	340	02-Feb-2018	100	OK

PROACTIVE MAINTENANCE

Access your machine's service & maintenance history with the utmost convenience. Plan your service schedules intelligently with our regular reminders.

Date	Time	Hour	Alarm Type	Alarm Code (SPN)	Description	Callback
15-Apr-2018	07:16	310	W	301	Warning! Fuel level low	
14-Apr-2018	17:39	809	W	301	Warning! Fuel level low	
11-Apr-2018	11:22	881	W	301	Warning! Fuel level low	
10-Apr-2018	07:16	484	W	706	Warning! Battery Voltage low	
08-Apr-2018	07:41	479	W	301	Warning! Fuel level low	
08-Apr-2018	06:58	479	W	301	Warning! Fuel level low	
08-Apr-2018	11:34	409	W	213	Warning! Engine Oil Pressure low	

ALARMS

Get notified of system alarms & protect your machine from critical faults & experience repairs.

SPECIFICATIONS

Engine

Maker/Model	HYUNDAI HM 4.2		
Rated flywheel horse power	ISO3046 (Gross)	105HP@ 2200rpm	
Max Torque	37.5@ 1500rpm		

Hydraulic System

Main pump	Two variable displacement piston pumps		
Type	Two variable displacement piston pumps		
Max. flow	2x130 lpm		
Sub-pump for pilot circuit	Gear pump		
Cross-sensing & fuel saving pump system	Gear pump		

Hydraulic Motors

Travel	Two speed axial piston motor with brake valve and parking brake		
Swing	Axial piston motor with automatic brake		

Relief Valve Settings

Implement Circuit	350kgf/cm ²
Travel	350kgf/cm ²
Power Boost	380kgf/cm ²
Swing Circuit	285kgf/cm ²
Pilot Circuit	40kgf/cm ²
Service valve	Installed

Coolant & Lubricant Capacity

REFILLING	LITER
Fuel tank	270
Engine coolant	22
Engine oil	11.5
Swing device	2.5
Final drive (each)	3
Hydraulic system / Hydraulic tank	210 / 124

Drives & Brakes

Drive method	Fully hydrostatic type	
Drive motor	Axial piston motor in-shoe design	
Reduction system	Planetary reduction gear	
Traction Force	13300 kgf (130KN)	
Max.travel speed (high/low)	5.5kmph/3.2kmph	
Gradeability	35 Degree (70%)	
Parking brake	Multi wet disc	

Undercarriage

X-Leg type centre frame is integrally welded with reinforced box section track frames. The under carriage includes lubricated rollers, idlers, track adjusters with shock absorbing spring and sprockets and trackchain with triple grouse shoes.

Centre frame	X-Leg type	
Track frame	Pentagonal box type	
No. of shoes on each side	46	
No. of carrier rollers each side	1	
No. of track rollers, each side	7	
No. of rail guard each side	1	

Swing System

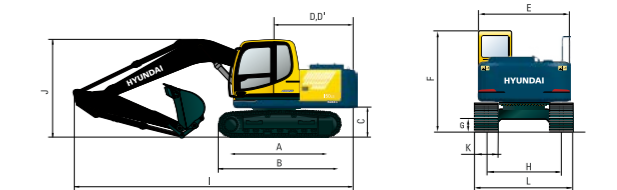
Swing motor	Axial piston motor	
Swing reduction	Planetary gear reduction	
Swing bearing lubrication	Grease bathed	
Swing brake	Multi wet disc	
Swing speed	12.0 rpm	

Operating Weight

Shoe Width mm (in)	Operating weight kg (lb)	Ground pressure kgf/cm ² (psi)
600 mm (20")	14,200 (31,305)	0.36 (5.6)

Dimensions

(mm)



A	Tumbler distance	3000
B	Overall distance of crawler	3750
C	Ground clearance counter weight	940
D	Tail swing radius	2350
D'	Rear end length	2350
E	Overall width of upper structure	2475
F	Overall height of the cab .	2860
G	Min. ground clearance	440
H	Track Gauge	2000
I	Overall length	7870
J	Overall height of boom	2760
K	Track shoe width	600/500 (Optional)
L	Overall width	2600 (2500)

Working Ranges

(mm)

Arm length (std.)	*2100	2500	Boom length (std.)	4600
-------------------	-------	------	--------------------	------

A	Maximum Digging Reach	7920	8330
A'	Digging Reach on Ground	7770	8180
B	Max Digging Depth	5150	5550
B'	Max- Digging Depth (8' level)	4900	5340
C	Vertical Digging Depth	4900	5330
D	Maximum Digging Height	8100	8300
E	Maximum Dumping Height	5750	6060
F	Minimum Swing Radius	2670	2650
	Arm Crowd Force	7900 (8580)*	6700 (7270)*
	Bucket Digging Force	10400 (*11290) kg	

*Power Boost

LIFTING CAPACITIES

LIFTING CAPACITIES R150L SMART PLUS

Rating over-front Rating over-side

• Boom: 4.6m (15' 1") • Arm: 2.50m (8' 2")
• Shoe: 600mm triple grouser

Load point height m (ft)	Load radius								At max. reach			
	1.5 m (5.0 ft)		3 m (10.0 ft)		4.5 m (15.0 ft)		6.0 m (20 ft)		Capacity		Reach	
											m (ft)	
6.0m (20ft)	kg									*2810	1920	6.69
	lb									*6190	4230	(21.9)
4.5m (15.0ft)	kg						*2770	2270	2440	1500	7.53	
	lb						*6110	5000	5380	3310	(24.7)	
3.0m (10.0ft)	kg		*4930	*4930	*3830	3570	*3380	2190	2170	1310	7.95	
	lb		*10870	*10870	*8440	7870	*7450	4830	4780	2890	(26.1)	
1.5m (5.0ft)	kg		*8030	6240	*5010	3300	3380	2070	2100	1250	8.03	
	lb		*17700	13760	*11050	7280	7450	4560	4630	2760	(26.3)	
Ground Line	kg lb		*8780 *19360	5800 12790	5200 11460	3090 6810	3270 7210	1970 4340	2180 4810	1300 2870	7.77 (25.5)	
-1.5m (-5.0ft)	kg lb	*5740 *12650	*5740 *12650	*9910 *21850	5700 12570	5080 11200	2990 6590	3220 7100	1920 4230	2500 5510	1500 3310	7.15 (23.5)
-3.0m (-10.0ft)	kg lb	*8760 *19310	*8760 *19310	*9040 *19930	5770 12720	5100 11240	3000 6610			3340 7360	2030 4480	6.01 (19.7)
4.5m (15.0ft)	kg lb			*6590 *14530	6030 13290							

• Boom: 4.6m (15' 1") • Arm: 2.10m (6' 11") • Bucket: 0.65m³
• Shoe: 500mm (24") triple grouser with 1900kg (4190lb) Counterweight

Load point height m (ft)	Load radius								At max. reach			
	1.5 m (5.0 ft)		3 m (10.0 ft)		4.5 m (15.0 ft)		6.0 m (20 ft)		Capacity		Reach	
											m (ft)	
6.0m (20ft)	kg					*3090	*3090			*3030	2210	6.17
	lb					*6810	*6810			*6680	4870	(20.2)
4.5m (15.0ft)	kg					*3340	*3340	*2900	2240	2700	1680	7.09
	lb					*7360	*7360	*6390	4940	5950	3700	(23.3)
3.0m (10.0ft)	kg		*5810	*5810	*4230	3530	3490	2170	2380	1450	7.54	
	lb		*12810	*12810	*9330	7780	7690	4780	5250	3200	(24.7)	
1.5m (5.0ft)	kg		*8760	6090	*5340	3270	3370	2070	2290	1380	7.62	
	lb		*19310	13430	*11770	7210	7430	4560	5050	3040	(25.0)	
Ground Line	kg lb		*8470 *18670	5770 12720	5180 11420	3080 6790	3280 7230	1980 4730	2400 5290	1440 3170	7.35 (24.1)	
-1.5m (-5.0ft)	kg lb	*6370 *14040	*6370 *14040	*9780 *21560	5740 12650	5110 11270	3010 6640	3250 7170	1950 4300	2800 6170	1700 3750	6.68 (21.9)
-3.0m (-10.0ft)	kg lb	*10300 *22710	*10300 *22710	*8590 *18920	5850 12900	5160 11380	3060 6750			3700 8160	2430 5360	5.41 (17.7)

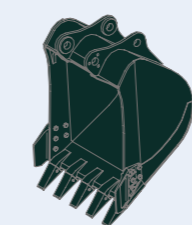
- Lifting capacity is based on SAE J1097, ISO 10567.
- Lifting capacity of the Robex Series does not exceed 75% of the tipping load with the machine on firm, level ground or 87% of full hydraulic capacity.
- The load point is a hook (standard equipment) located on the back of the bucket.
- (*) indicates the load limited by hydraulic capacity.

SPECIFICATIONS

BUCKETS

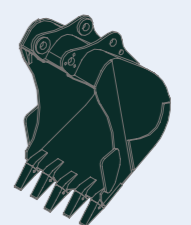
All buckets are welded with high-strength steel.

GENERAL PURPOSE



0.72m³ SAE heaped bucket

HEAVY DUTY



*0.65m³ SAE heaped bucket

Capacity m³(yd³)		Width mm (in)		Weight kg (lb)	Recommendation mm (ft -in)
SAE heaped	CECE heaped	Without side cutters	With side cutters		4.6m (15' 1") Boom 2.1m (6' 11") Arm
*0.72m³(0.93yd³)	0.60m³(0.78yd³)	1205mm(47.4")	1305mm (51.4")	551 (1215)	■
●0.65m³(0.85yd³)	0.55m³(0.72yd³)	1110mm(43.7")	1210mm (47.6")	555 (1224)	▲

* : Standard GP bucket ■ Applicable for materials with density of 1,600 kg/m³ (2,700lb yd³) or less
● : Heavy Duty bucket ▲ Applicable for materials with density of 1,100 kg/m³ (1,850 lb/yd³) or less

ATTACHMENT

Boom and arm are welded with a low-stress, full-box section design. 4.6m (15' 1") mono boom and 2.1m (6' 11"), 2.5m (8'20") Arm is available. Buckets are all-welded, high-strength steel implements.

Arm	Length	mm (ft.in)	*2,100 (6' 11")		2,500 (8' 20")	
			kN	kgf	kN	kgf
Bucket digging force	SAE	kN	87.3 (94.8)	87.3 (94.8)		
		kgf	8,900 (9,660)	8900 (9660)		
	ISO	lbf	19,620 (21,300)	19,620 (21,300)		
		kN	102 (110.8)	102 (110.8)		
Arm crowd force	SAE	kgf	10,400 (11,290)	10400 (11290)		
		lbf	22,930 (24,890)	22930 (24890)		
	ISO	kN	73.6 (79.9)	62.8 (68.2)		
		kgf	7,500 (8,140)	6400 (6950)		
	SAE	lbf	16,530 (17,950)	14110 (15320)		
		kN	77.5 (84.1)	65.7 (71.4)		
ISO	kgf	7,900 (8,580)	6700 (7270)			
	lbf	17,420 (18,910)	14770 (16040)			

*: Standard arm weight including cylinder and linkage