

HL940A

With EU Stage V Engine Installed

* Photo may include optional equipment.



Head Office(Sales Office)
14F, GLOBAL R&D CENTER, 477 BUNDANG SUSEO-RO, BUNDANG-GU, SEONGNAM-SI, GYEONGGI-DO, 13553, KOREA

PLEASE CONTACT

Gross Power
155 HP(116 kW) at 2,200 rpm

Net Power
154 HP(115 kW) at 2,200 rpm

Bucket Capacity
2.1 ~ 2.3 m³

Operating Weight
13,600kg / 29,980 lb

WHAT'S NEWEST AND BEST

HL940A

THE BEST PRODUCTIVITY AND FUEL EFFICIENCY

- EU STAGE V Engine
- Eco Report
- Smart Power Mode
- Hydraulic Differential Lock **Option**
- Parallel Z-bar Linkage
- ICCO (Intelligent Clutch Cut Off)
- Automatic Engine Shut Down
- Optimized Power Matching

ULTIMATE DURABILITY

- Highly Durable Axle
- Sinter Brake Disc
- Hydraulic Hose
- Optimized Drive Shaft

EASY CONTROL AND COMFORTABLE OPERATION

- Electric Adjustable Heated Mirror **NEW**
- Fully Adjustable Seat and Armrest
- Air Compressor **Option**
- Remote Door Control **Option**
- Auto Greasing System **Option**
- Ride Control **Option**
- Full Sound-Proofed Spacious Cabin
- Wide Touch Screen Monitor
- Centralized Cluster
- Soft end Stop
- Weighing System
- Bucket Angle Display **NEW**
- Bucket Shaking **NEW**

THE ULTIMATE SAFE ENVIRONMENT

- Emergency Stop
- Seat Belt Warning Alarm
- Radar **Option**
- AAVM+(Advanced Around View Monitoring) **NEW** **Option**
- See-Through Bucket **NEW** **Option**

SERVICEABILITY AND TELEMATICS

- Unnecessary Regular DPF Cleaning Interval
- ECD(Engine Connected Diagnostics)
- Fully Openable Engine Hood
- Hi MATE **Option**
- Easy Filter Replacement
- Wide Core & Fin Radiator
- Longer Lasting Filter
- Integrated Mudguard **NEW**



* Photo may include optional equipment.



THE BEST PRODUCTIVITY AND FUEL EFFICIENCY

The new HYUNDAI HL940A with new engine technologies is satisfying the most strict environmental emission regulation in the world and A series in wheel loader have a number of new features that contribute to overall fuel and also production efficiency.



FUEL SAVINGS

up to **5%**
V-type loading cycle
(Compared to Power mode)

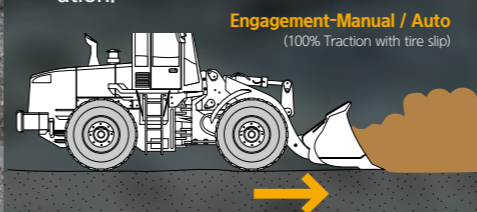
Smart Power Mode

Smart Power mode reduces fuel consumption by adjusting the engine speed in heavy load work like digging. The key point of this function is not only saving fuel with same performance as Power mode but also making good balance between traction force and breakout force.



Hydraulic Differential Lock Option

Hydraulic differential lock has the advantages of both improving productivity and less fuel consumption by preventing tire slip during the operation.



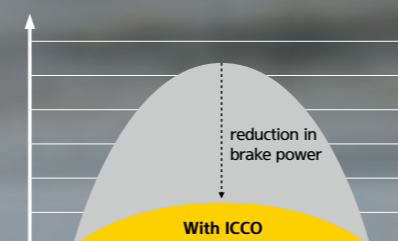
Parallel Z-bar Linkage

Newly developed parallel z-bar linkage provides perfect parallel lift function with high tilt forces.

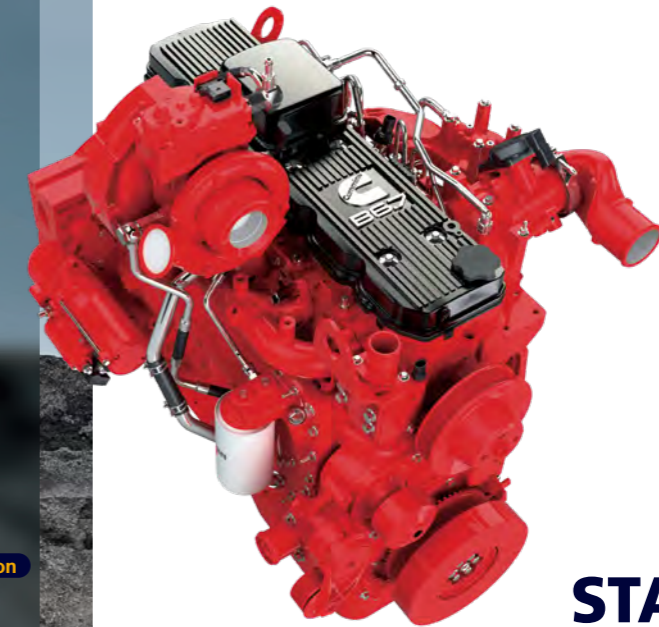


ICCO (Intelligent Clutch Cut Off)

By selecting of 'H-Mode' among clutch cut-off selections, ICCO will be engaged for both less power loss in torque converter and lower heat generation on brake sides.



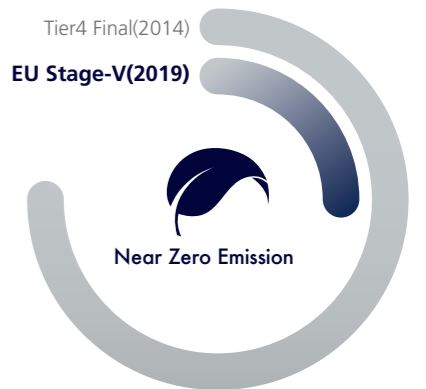
* Photo may include optional equipment.



EU STAGE V Engine

'Cummins B6.7' engine meeting Euro Stage V emission regulations is designed for maximum productivity and fuel efficiency.

Tier4 Final(2014)
EU Stage-V(2019)



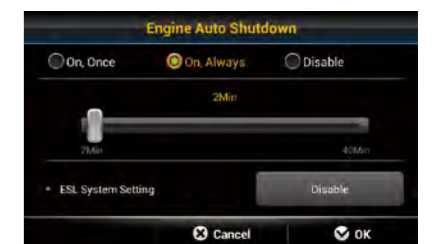
Eco Report

Eco report shows the wheel loader's inefficient operation status in order to improve operator's improper working habit.



Automatic Engine Shut Down

Adjustable 'Automatic engine shut down' significantly reduces idle time, overall operating hours and fuel consumption.



Optimized Power Matching

For maximum operational efficiency, the engine is designed to achieve high torque in the low RPM range. Change an engine rpm at peak torque to lower rpm section also.



ULTIMATE DURABILITY

The true value of the HL940A, which is now far more powerful, is revealed in tough working environments. With the high-strength design structure and enduring system proven by rigorous road tests at various work sites, Hyundai wheel loaders can perform any high-load work to maximize productivity.

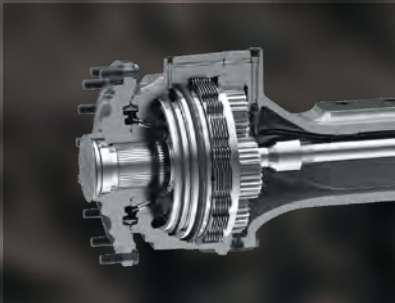
Highly Durable Axle

Highly durable ZF axles provide the best performance and efficiency in any workplace.



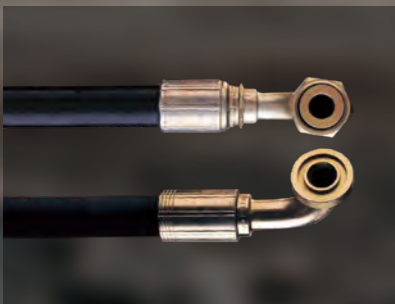
Sinter Brake Disc

The HL940A has a sinter disc of a new material with excellent durability to suppress generation of heat and vibration, heightening brake durability and enabling convenient maintenance with a service-friendly design.



Hydraulic Hose

Hyundai's hydraulic hoses have twice increased durability and product life cycle over previous hoses.



Optimized Drive Shaft

Through thorough verification, the optimized drive shaft makes the HL940A wheel loader more durable.



Air Compressor **Option**

Air Compressor will be used for cleaning inside the cabin and for operator self-cleaning.



Full Sound-Proofed Spacious Cabin

State-of-the-art noise reduction technology of the HL940A ensures maximum silence(68 dB) in the same category of equipment, promising more silent and more pleasant interior space.



Remote Door Control **Option**

Remote door control allows operators to open the cabin door remotely. This system was developed for the convenience and safety of the operator.



Bucket Shaking **NEW**

It makes it easier to shake off debris from inside the bucket.



Wide Touch Screen Monitor

The seven-inch capacitive-type display (like a smart phone display) provides excellent legibility.



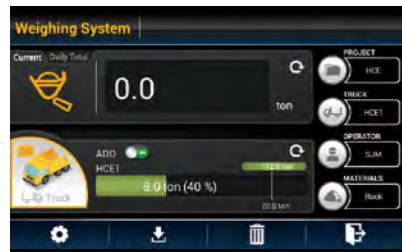
Centralized Cluster

With a centralized cluster, operator can see at a glance all the states of wheel loader.



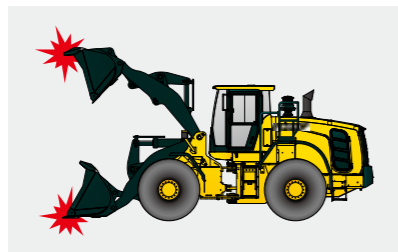
Weighing System

The HL940A further improves work precision with additional weight calibration. The automatic/manual cumulative weighing function greatly enhances operating efficiency. Icons displaying weighing errors and the two-color weight value indication on the monitor enable accurate weighing to support efficient production management.



Soft End Stop

When an attachment reaches at the end stroke, it gives operator enormous shock especially for Boom up. This function gives shock free operation by reducing the speed of attachment near the end stroke. It can be selected on/off through Monitor.



Electric Adjustable Heated Mirror **NEW**

The electrically adjustable heated mirrors can be controlled from inside the cabin with a switch, offering angle adjustment and a heating function to enhance operator convenience.



Fully Adjustable Seat and Armrest

This suspension will be applied for minimizing an operator's fatigue. Available for electro hydraulic Control.



Ride Control **Option**

Ride control system reduces operator fatigue and material spillage during operation. An accumulator helps to minimize shock, giving the operator a much smoother ride.



Auto Greasing System **Option**

Auto greasing system is designed to automatically lubricate when it is needed. Uniform application of lubricant ensures that the lubrication points always have the correct amount of grease.



EASY CONTROL AND COMFORTABLE OPERATION

The HL940A is optimized to enable operators to access accurate equipment data in a timely manner. This feature is more important in tough working environments to increase productivity while enjoying various forms of entertainment. Enjoy unparalleled satisfaction provided by infotainment of Hyundai's state-of-the-art information technology!

*Photo may include optional equipment.

// HL940A with advanced technology ensures our safety on a construction site. //



The A Series in wheel loaders are products of HCE's spirit of initiative, creativity, and strong drive. HCE engineers, who are the best in the industry, have worked tirelessly to offer a zero-defect product. The new A Series in wheel loaders reflects customers' needs in the field gleaned by thorough monitoring.

Emergency Stop

In an emergency, operating the Emergency Stop switch located at the bottom of the seat will shut down the engine starting.



Seat Belt Warning Alarm

Seat belt warning alarm allows the operator to work in a safer environment.

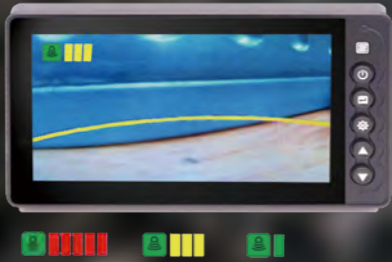


Please make sure that your seat belt is fastened. Always use your seat belt when operating the machine.

OK

Radar Option

The Radar system can detect rear obstacles without blind spots and no distinction between day and night. Also, the warning level of the nearest obstacle is always displayed on the secondary monitor.



AAVM+(Advanced Around View Monitoring) NEW Option

This is a system that is combined AVM (Around View Monitoring) with IMOD (Intelligent Moving Object Detection) and detects people around the machine and analyzes the images, which displays a warning sign on a monitor when detecting the danger. So operators can watch the surroundings in a variety of angles through the monitor and prevent the safety accident in advance.



It displays the position of people with a top view.

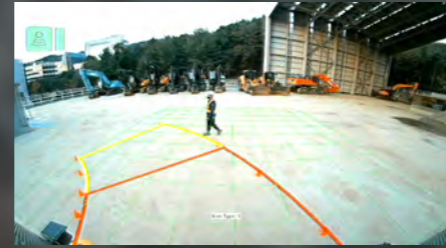


A green warning sign is displayed when people move in within a 5-meters radius.

A red warning sign is displayed when people move in within a 3-meters radius.

AAVM+ NEW Option

It offers reverse guidelines and a feature that alerts you only to objects detected in the reversing path.



See-Through Bucket NEW Option

It enhances safety by improving monitor visibility in areas obscured by the bucket.



THE ULTIMATE SAFE ENVIRONMENT

With the top priority on satisfaction of operators in terms of silence, safety and maintainability, Hyundai wheel loaders provide operators with comfortable cabin space by low-vibration, low-noise, and superior safety design. They also offer greater satisfaction by extending the replacement cycle of supplies and minimizing maintenance time and cost.





SERVICEABILITY AND TELEMATICS

IoT, ICT, AI-based digital technologies is creating smart construction sites. Maximizes connectivity, productivity, and safety for your successful businesses.



HiMATE

Option

IT'S CONVENIENT, EASY AND VALUABLE

Hi MATE Hyundai's newly developed remote management system, utilizes GPS-satellite technology to provide customers with the highest level of service and product support available. Hi MATE enables users to remotely evaluate machine performance, access diagnostic information, and verify machine locations at the touch of a button.

WHAT IS BENEFITS



Increase Productivity

It helps you operate machines in efficient. You can check the difference between total engine hours and actual working hours. See how productive your machines are and plan any required cost saving solutions. Hi MATE offers working information such as working / idling hours, fuel consumption and rate.



Convenient and Easy Monitoring

There is nothing much to do to monitor your machines. Just log on to the Hi MATE website or mobile application. Hi MATE allows you to watch your machines whenever and wherever you are.



Security

Protect your machines from theft or unauthorized usage with Hi MATE. If the machine moves out of the Geofence boundary, you will get alerts.

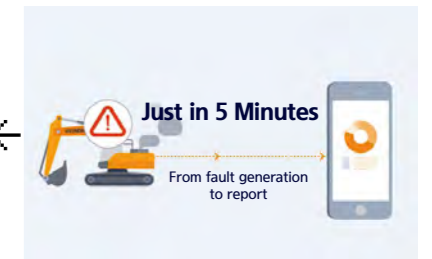
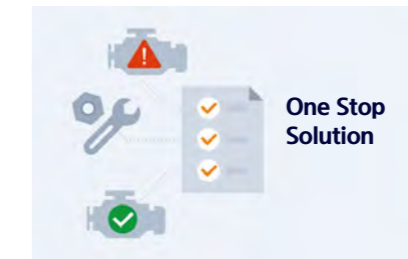
Unnecessary Regular DPF Cleaning Interval

Regular ash cleaning for DPF is not necessary, only needed as indicated by fault-indicator lamp.

ECD(Engine Connected Diagnostics)

It supports service technician with remote diagnostics report and ensure it arrive on site with proper tools after preparing in advance.

We are all connected



Fully Openable Engine Hood

The HL940A has improved accessibility to the sealed engine room with retractable hood to allow easy cleaning and maintenance. The engine room was designed to prevent possibility of fire due to inflow of foreign materials. The fully retractable engine hood in the electric actuator opening mode also enhances maintainability of the engine room and cooling room.



Easy Filter Replacement

With easy filter replacement, machine can be managed more easily.



Wide Core & Fin Radiator

Wide core & fin radiator reduces clogging.



Longer Lasting Filter

The service interval of fuel filters has been increased from 500 hours to 1,000 hours.



*Photo may include optional equipment

SPECIFICATIONS

ENGINE

Maker / Model	CUMMINS / B6.7
Type	6 cylinder, water cooled, 4-cycle, turbocharged, charge air cooled, direct injection, electronic controlled diesel engine
Gross Power (SAE J1995)	155 HP (116 kW) at 2,200 rpm
Net Power (SAE J1349)	154 HP (115 kW) at 2,200 rpm
Max. Power	165 HP (123 kW) at 1,800 rpm
Peak Gross Torque (SAE J1995)	746 N·m (550 lb·ft) at 1,300 rpm
Displacement	6.7 L (408 cu in)

TRANSMISSION

Torque Converter Type	3-Elements, Single-stage, Single phase
Tire	20.5 R25, ★★, L3

Travel Speed, km/h (mph)	4 speed T/M
--------------------------	-------------

Forward	1st	7.0 (4.3)
	2nd	12.8 (7.9)
	3rd	25.1 (15.6)
	4th	40.0 (24.9)
Reverse	1st	7.4 (4.6)
	2nd	13.5 (8.4)
	3rd	26.4 (16.4)

AXLES

Drive System	Four-wheel drive system
Mount	Rigid front axle and oscillating rear axle
Rear Axle Oscillation	Oscillating ±11° degrees
Hub Reduction	Planetary reduction at wheel end
Differential	Conventional
Reduction Ratio	21.533

HYDRAULIC SYSTEM

Type	Load sensing hydraulic system	
Pump	Variable displacement piston pump, 149 lpm	
Control Valve	2 spool (Bucket, Boom) 3 spool (Bucket, Boom, Aux)	
System Pressure	280 bar (4,061 psi)	
Lift Circuit	The valve has four functions: raise, hold, lower and float can adjust automatic kickout from horizontal to full lift.	
Tilt Circuit	The valve has three functions: tilt back, hold and dump. Can adjust automatic bucket positioner to desired load angle.	
Cylinder	Type: Double acting No. of cylinders-bore x stroke:	
	Lift	2-110 × 738 mm (4.3" × 29")
	HL940A Tilt	125 × 560 mm (4.9" × 1' 10")
	HL940A XT Tilt	125 × 580 mm (4.9" × 1' 11")
Cycle Time	Raise: 5.5 sec, Dump: 1.9 sec Lower: 3.9 sec, Total: 11.3 sec	

* Hyundai Bio Hydraulic Oil (HBHO) available

TIRES

Type	Tubeless, loader design tires
Standard	20.5 R25, ★★, L3
Options Include	20.5-25 16PR L3 20.5-25 16PR L5 20.5 R25, ★, XHA

OVERVIEW

Description	HL940A	HL940A XT	HL940A TM
Operating Weight	13,600 kg (29,980 lb)	13,860 kg (30,560 lb)	13,800 kg (30,420 lb)
Bucket Capacity	Heaped	2.3 m ³ (3.0 yd ³)	2.3 m ³ (3.0 yd ³)
	Struck	2.0 m ³ (2.62 yd ³)	2.0 m ³ (2.62 yd ³)
Breakout Force-Bucket		11,800 kg (26,015 lb)	10,830 kg (23,880 lb)
		11,940 kg (26,325 lb)	8,880 kg (19,580 lb)
Tipping Load	Straight	10,470 kg (23,085 lb)	8,880 kg (19,580 lb)
	Full Turn	9,005 kg (19,850 lb)	7,640 kg (16,840 lb)

BRAKES

Service Brakes	Hydraulically actuated, wet disc brakes actuate all 4 wheels independent axle-by-axle system. Self adjusting & wheel speed brake.
Parking Brake	Spring-applied, hydraulically released brake
Emergency Brake	When brake oil pressure drops, indicator light alerts operator and parking brake automatically applies.

STEERING SYSTEM

Type	Load sensing hydrostatic articulated steering
Pump	Variable displacement piston pump, 149 lpm
System Pressure	210 bar (3,046 psi)
Cylinder	Double acting 2-65 × 429 mm (2.5" × 16.9")
Steering Angle	40° to both right and left angle, respectively
Features	Center-point frame articulation. Tilt and telescopic steering column.

SERVICE REFILL CAPACITIES

Fuel Tank	220.0 liters (58 US gal)
Def Tank	30.1 liters (8.0 US gal)
Cooling System	37.0 liters (9.8 US gal)
Crankcase	18.0 liters (4.8 US gal)
Transmission	35.0 liters (9.2 US gal)
Front Axle	23.0 liters (6.1 US gal)
Rear Axle	23.0 liters (6.1 US gal)
Hydraulic Tank	90.0 liters (23.8 US gal)
Hydraulic System (Including Tank)	130.0 liters (34.3 US gal)

CABIN

ROPS / FOPS Cabin Meet ISO 3471 and ISO 3449

SOUND

Guaranteed noise level presented below can be differed depending on a range of factors such as operating condition, speed of a cooling fan, types of engine and so forth. Hearing protection shall be necessary if an operator is working in the improperly maintained cabin or exposed to a noisy environment by leaving doors and/or windows open.

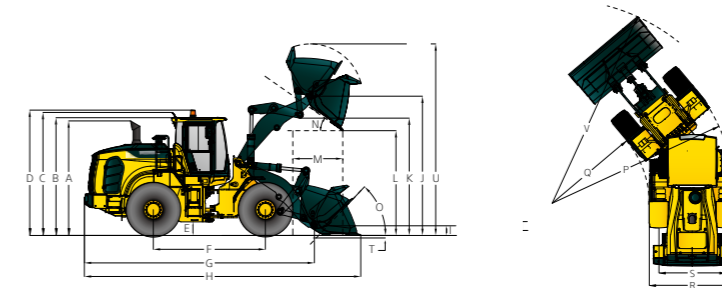
With cooling fan speed at maximum value:	
Operator sound pressure level (ISO 6396:2008)	68 dB(A)
Exterior sound power level (ISO 6395:2008)	108 dB(A)

* Distance of 15 m (49.2 ft), moving forward in second gear ratio.

DIMENSIONS & SPECIFICATIONS

DIMENSIONS

All dimensions are approximate.



Unit : mm (ft·in)

Description	HL940A	HL940A XT	HL940A TM
A Height to Top of Exhaust Pipe	3,310 (10' 10")	3,310 (10' 10")	3,310 (10' 10")
B Height to Top of Cabin	3,300 (10' 10")	3,300 (10' 10")	3,300 (10' 10")
C Height to Top of Product Link Antenna	3,445 (11' 4")	3,445 (11' 4")	3,445 (11' 4")
D Height to Top of Warning Beacon	3,430 (11' 3")	3,430 (11' 3")	3,430 (11' 3")
E Ground Clearance	417 (1' 4.4")	417 (1' 4.4")	417 (1' 4")
F Wheelbase	3,000 (9' 10")	3,000 (9' 10")	3,000 (9' 10")
G Overall Length (Without Bucket)	6,430 (21' 1")	7,020 (23')	-
H Shipping Length (With Bucket Level on Ground)	7,600 (24' 11")	8,190 (26' 10")	7,805 (25' 7")
I Hinge Pin Height at Carry Position	430 (1' 5")	600 (1' 12")	-
J Hinge Pin Height at Maximum Lift	3,820 (12' 6")	4,425 (14' 6")	3,980 (13' 1")

Description	HL940A	HL940A XT	HL940A TM
K Lift Arm Clearance at Maximum Lift	3,235 (10' 7")	3,840 (12' 7")	-
L Dump Clearance at Maximum Lift and 45° Discharge	2,765 (9' 1")	3,370 (11' 1")	2,840 (9' 4")
M Reach at Maximum Lift and 45° Discharge	1,095 (3' 7")	1,090 (3' 7")	1,380 (4' 6")
N Dump Angle at Maximum Lift and Dump (on Stops)	48	47	50
O Roll Back Angle	Ground	42	42
	Carry	47	50
P Clearance Circle (Diameter) to Outside of Tires	10,910 (35' 10")	10,910 (35' 10")	10,910 (35' 10")
Q Clearance Circle (Diameter) to Inside of Tires	5,910 (19' 5")	5,910 (19' 5")	5,910 (19' 5")
R Width Over Tires (Unloaded)	2,450 (8')	2,450 (8')	2,450 (8')
S Tread Width	1,930 (6' 4")	1,930 (6' 4")	1,930 (6' 4")

OPERATING SPECIFICATIONS WITH BUCKETS

Linkage	Bucket Type	Edge Type	General Purpose Pin On			High Lift Linkage Change
			Bolt-On Cutting Edges	Bolt-On Cutting Edges	Bolt-On Cutting Edges	
Capacity – Rated	m ³	yd ³	2.3	2.1	2.3	-
			3.0	2.7	3.0	-
Capacity – Rated at 110% Fill Factor	m ³	yd ³	2.5	2.3	2.5	-
			3.3	3.0	3.3	-
Width	mm	ft/in	2,600	2,550	2,600	-
			8' 6"	8' 4"	8' 6"	-
Dump Clearance at Maximum Lift and 45° Discharge	mm	ft/in	2,765	2,795	2,640	+605
			9' 1"	9' 2"	8' 8"	+1' 12"
Reach at Maximum Lift and 45° Discharge	mm	ft/in	1,095	1,065	1,220	-5
			3' 7"	3' 6"	4'	-0.2"
Digging Depth	mm	ft/in	90	90	90	+40
			3.5"	3.5"	3.5"	+1.6"
T Shipping Length (with Bucket)	mm	ft/in	7,600	7,560	7,775	+590
			24' 11"	24' 10"	25' 6"	+1' 11"
U Overall Height with Bucket	mm	ft/in	5,185	5,145	5,395	+605
			17'	16' 11"	17' 8"	+1' 12"
V Loader Clearance Circle	mm	ft/in	12,180	12,110	12,280	+570
			40'	39' 9"	40' 3"	+1' 10"
Static Tipping Load, Straight (No Tire Deflection)	kg	lb	10,470	10,100	9,200	-1850
			23,085	22,270	20,285	-4075
Static Tipping Load, Articulated (No Tire Deflection)	kg	lb	9,005	8,700	7,900	-1550
			19,850	19,180	17,420	-3415
Breakout Force	kg	lb	11,800	12,230	10,200	+140
			26,015	26,965	22,490	+310
Operating Weight*	kg	lb	13,600	13,360	13,675	+460
			29,980	29,455	30,150	+1015

* All height and tire related dimensions are with standard 20.5 R25, ★★, L3 tires.

BUCKET SELECTION CHART

DENSITY OF OPERATING MATERIALS		
Loose Material	Material Density [ton / m ³]	
Earth / Clay	1.5 ~ 1.7	
Sand and Gravel	1.5 ~ 1.7	
Aggregate	25 ~ 76 mm (1 " to 3 in)	1.6 ~ 1.7
	19mm (0.75 in) and Larger	1.8

HL940A BUCKET SELECTION CHART

Standard Lift Arm - General Purpose Bucket																
Type	m ³ (yd ³)	Material Density [ton / m ³]														
		1.0	1.1	1.2	1.3	1.4	1.5	1.6	1.7	1.8	1.9	2.0	2.1	2.2	2.3	2.4
Cutting Edge	2.3 (3.0)	2.6 m ³ (3.4 yd ³)										2.2 m ³ (2.9 yd ³)				
Cutting Edge	2.1 (2.7)	2.4 m ³ (3.1 yd ³)										2.0 m ³ (2.6 yd ³)				
Cutting Edge Q/C	2.3 (3.0)	2.6 m ³ (3.4 yd ³)										2.2 m ³ (2.9 yd ³)				

High Lift Arm (XT) - General Purpose Bucket																
Type	m ³ (yd ³)	Material Density [ton / m ³]														
		1.0	1.1	1.2	1.3	1.4	1.5	1.6	1.7	1.8	1.9	2.0	2.1	2.2	2.3	2.4
Cutting Edge	2.3 (3.0)	2.6 m ³ (3.4 yd ³)										2.2 m ³ (2.9 yd ³)				
Cutting Edge	2.1 (2.7)	2.4 m ³ (3.1 yd ³)										2.0 m ³ (2.6 yd ³)				
Cutting Edge Q/C	2.3 (3.0)	2.6 m ³ (3.4 yd ³)										2.2 m ³ (2.9 yd ³)				



Change in Operating Specifications - Tires

Tires		20.5-25 16PR L5	20.5 R25, ★, XHA	20.5-25 16PR L3
Operating weight(kg)	kg	+440	-52	-108
	lb	+970	-115	-238
Static Tipping Load, Straight (No Tire Deflection)	kg	+300	-35	-75
	lb	+665	-75	-165
Static Tipping Load, Articulated (No Tire Deflection)	kg	+260	-30	-60
	lb	+575	-65	-130
Vertical height changes	mm	+65	-7	-3
	ft/in	+3"	-0.3"	-0.1"
R. Width over tires(unloaded)	mm	+27	-6	-6
	ft/in	1.1"	-0.2"	-0.2"
P. Clearance Circle(diameter) to Outside of Tires	mm	+27	-6	-6
	ft/in	+1"	-0.2"	-0.2"
Q. Clearance Circle(diameter) to Inside of Tires	mm	-27	+6	+6
	ft/in	-1"	+0.2"	+0.2"

** Dimension changes compared to 20.5R25, ★★, L3 radial tires.

STANDARD / OPTION

CAB & INTERIOR	STD
ALARMS, AUDIBLE AND VISUAL	
Air filter clogging	●
Battery voltage	●
Brake oil pressure	●
DEF low level	●
Engine coolant level	●
Engine oil pressure	●
Fuel level	●
Hydraulic oil temperature	●
Engine coolant temperature	●
Parking brake	●
Service brake oil pressure	●
Seat belt ON/OFF	●
Transmission error	●
Transmission oil temperature	●
GAUGES	
Diesel Exhaust Fluid (DEF) level	●
Engine coolant temperature	●
Fuel level	●
Speedometer	●
Transmission oil temperature	●
Horn, electric	●
INDICATOR LIGHTS	
Parking brake	●
High beam	●
Joystick steering	
FNR	
Differential Lock	
Pilot cut off	●
Turning light	●
Seat belt ON/OFF	●
Engine auto stop	●
Clutch Cut Off	●
Ride control	
LCD DISPLAY	
DEF level	●
DEF low level	●
Transmission gear range	●
Clock and fault code	●
Job time and distance	●
Operating hour counter	●
Engine rpm	●
Horn, electric	●
BATTERIES	
850CCA, 12V, 2PCS	●
LIGHTING SYSTEM	
Brake lights(Counterweight)	●
LED dome light	●
2 stop and tail lights	●
4 turn signals	●
2 Head lights on front tower	●
2 Head lights (LED) on front tower	
2 Working lights on front roof	●
4 Working lights on front roof	
2 Working lights on rear roof	
4 Working lights (LED) on front roof	
2 Working lights (LED) on rear roof	
2 Working lights on grill	●
2 Working lights (LED) on grill	

CAB & INTERIOR	STD
SWITCHES	
Battery master switch	●
Differential Lock	
Engine hood open	●
FNR shifter	
Hazard	●
Parking	●
Pilot cut off	●
Selective catalytic reduction	●
Emergency steering	
MEMBRANE SWITCHES IN MONITOR	
Main light	●
Work light	●
Auto grease	
Quick coupler	
Ride control	
Work load	●
Beacon light	
Rear wiper	
Mirror heat	●
Auto position	●
Fine modulation	●
IGNITION	
Key	●
Button	
CAB(SOUND SUPPRESSED)	
ROPS / FOPS CAB.	●
Cigar lighter & ashtray	
Coat hoot	●
Rear view mirrors (1 Inside)	●
Rear view mirrors (2 Outside, heated)	●
Steering colume, tilt and telescopic	●
Steering wheel with knob	●
Roller type sunshade (Front window)	●
Roller type sunshade (Rear window)	
Tinted safety glass	●
One door cab	●
Magazine pocket	●
Radio / USB player	●
Rubber floor mat	●
Wrist rest	●
24V to 12V DC converter (20A)	
DOOR	
Door and cab locks, one key	●
Doors, service access (Locking)	●
Doors, service access (Remote control)	
AUTOMATIC CLIMATE CONTROL	
Air conditioner & heater	●
Defroster	●
Intermittent wiper and washer, front and rear	●
SEAT	
2" Retractable seat belt & adjustable mechanical suspension (Heated)	●
2" Retractable seat belt & adjustable air suspension (Heated)	
3" Retractable seat belt & adjustable air suspension (Heated)	

STANDARD / OPTION

CAB & INTERIOR	STD
PERSONAL STORAGE SPACE	
Console box	●
Holder, can and cup	●
PEDALS	
One acceletator pedal	●
One brake pedal	●
Dual-brake pedal	
Accel pedal without ECO switch	●
Accel pedal with ECO switch	
ENGINE	
Alternator, 95A	●
Antifreeze	●
Fuel warmer	●
Fan guard	●
Rain cap, Engine air intake	●
Coolant Level Sight Gauge	●
3 Stage air precleaner	
ENGINE, CUMMINS, B6.7	
EU Stage V / EPA TIER 4 FINAL	●
Fuel / water separator	●
Engine oil level dipstick gauge	●
CLEAN EMISSION MODULE	
DOC, DPF and SCR	●
POWER TRAIN	
TRANSMISSION	
Transmission F4/R3, computer controlled, electronic soft shift, auto-shift and kick-down features included	●
Transmission oil sight level	●
AXLE	
Open differential (Front / Rear)	●
Limited slip differential (Front / Rear)	
Hydraulic lock differential (Front)	
BRAKE	
Service brake (Enclosed wet-disc)	●
Parking brake	●
TIRES	
20.5 R25, ★★, L3	●
20.5 R25, ★, XHA	
20.5-25, 16PR, L3	
20.5-25, 16PR, L5	
HYDRAULIC SYSTEM	
STD	
Auto Greasing	
Boom kickout, automatic	●
Bucket positioner, automatic	●
Diagnostic pressure taps	●
CONTROL	
Joystick	
Fingertip	
Joystick & FNR Switch	
Electro Hydraulic Joystick	●
Electro Hydraulic Fingertip	
EH joystick steering	
Extra piping for auxiliary function	
Hyundai Bio Hydraulic Oil(HBHO)	
Hydraulic oil level sight gauge	●
Quick coupler piping	
Ride control system	

SAFETY	
Emergency stop	●
Fire extinguisher	
Alarm, back-up	●
Boom safety lock	
Emergency steering	
OBJECT DETECTION	
AAVM+(Advanced Around View Monitoring)	
See-through Bucket	
RADAR + Secondary Mornitor	
OTHERS	
Articulation locking bar	●
Air compressor	
Tool kit	
Lift and tie-down hooks	●
Loader linkage, sealed	●
Parallel Z-bar design	●
Vandalism protection caplocks	●
BUCKET	
2.3m³ Bolt-on Cutting Edges type	●
2.1m³ Bolt-on Cutting Edges type	
2.3m³ Q/C type	
COUNTERWEIGHT	
Counterweight	●
Counterweight - Heavy weight	
Drawbar with pin	●
ERGONOMICALLY LOCATED AND SLIP RESISTANT, LEFT & RIGHT	
Handrails	●
Ladders	●
Platforms	●
Steps	●
TELEMATICS	
Hi MATE	
ECD(Engine Connected Diagnostics)	●
GUARDS	
Crankcase	
Transmission	
Fenders (Front / Rear)	●
Mud guards	

* Standard and optional equipment may vary. Contact your Hyundai dealer for more information. The machine may vary according to International standards.
 * The photos may include attachments and optional equipment that are not available in your area.
 * Materials and specifications are subject to change without advance notice.
 * All imperial measurements rounded off to the nearest pound or inch.

MEMO