

HL665 vL

With Tier 2 / Stage II Engine Installed

* Photo may include optional equipment.



Head Office(Sales Office)
14F, GLOBAL R&D CENTER, 477 BUNDANG SUSEO-RO, BUNDANG-GU, SEONGNAM-SI, GYEONGGI-DO, 13553, KOREA

PLEASE CONTACT

Rated Power
217HP (162kW) at 2,000rpm

Bucket Capacity
3.0m³

Operating Weight
17,000 Kg (37,478 lb)

WHAT'S NEWEST AND BEST

HL665VL

HIGH EFFICIENCY, ENERGY SAVING

- Low-RPM Engine
- Triple Fuel Filter
- High Acceleration Performance
- Advanced Double Pump Confluence Technology
- Box-shaped Structure

OPERATOR COMFORT

- Super-large Driving Space
- Optimized Ergonomic Design
- Excellent Air Conditioning System
- Deluxe Suspension Seat
- Centralized Monitoring Panel
- Entertainment System (USB/MP3, Radio)
- Shock Pad

MAINTENANCE CONVENIENCE

- Easy Access to Engine Compartment
 - Wide-opened Hood Cover
 - Ground Level Access to Check Point
- Quick Changeable Brake Disc

RELIABILITY & DURABILITY

- High Performance Cooling System
- Reliable Hydraulic Components
- Wet type Pre-cleaner **Option**
- High Wear-resistant Pin and Bearing



* Photo may include optional equipment.

**Weichai Steyr
WD10G220E23 engine**

With 162KW rated power and 2,000 rpm rated rotation, the Weichai Steyr WD10G220E23 engine has been adjusted on the basis of condition subdivision, enabling lower fuel consumption in the most commonly used operating states.



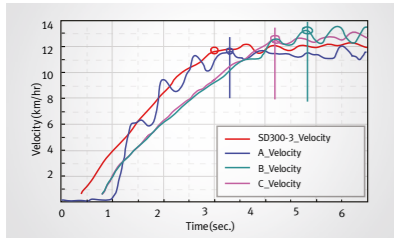
Triple Fuel Filter

Triple fuel filters protect engine and fuel system from low quality fuel and make engine life longer.



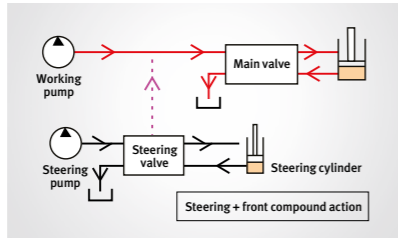
**High Acceleration
Performance**

The injection pump has undergone special debugging at a professional test bench and features greatly improved engine acceleration performance, enabling Hyundai machines to start work in the 3rd second while other brand machines are still in the acceleration phase.



**Advanced Double Pump
Confluence Technology**

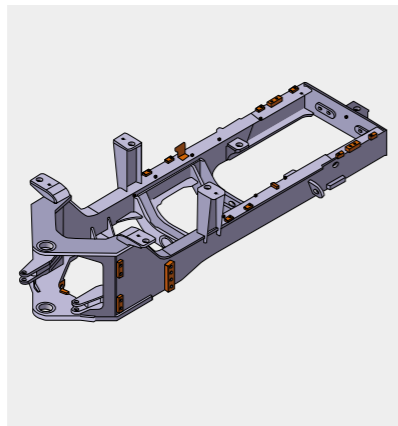
The hydraulic system uses condition subdivision to realize a reasonable match, and makes full use of power and energy, thereby minimizing engine oil pressure load and power loss and enabling miniaturization of the hydraulic pump.



The whole center of gravity has been moved backward, and the real axle load bearing proportion has been increased to 54% resulting in a tipping load 10% higher than the industry level and greatly improved product stability.



Thanks to the box-shaped structure of the rear frame side plates, the enhanced frame strength makes it easy to meet the challenge posed by harsh working conditions.



Increasing the tilting angle a3 in the carry position allows the machine to move on bumpy roads without spilling any material, while increasing the dump angle a2 enables the machine to dump materials more quickly and completely.



With a 3.2m wheelbase and a 5,630mm turning radius at the bucket edge, which is the smallest among similar products in the industry, Hyundai's machine is specifically designed for light density material working conditions and offers greater overall flexibility, as well as more apparent advantages especially in confined work spaces.



HIGH EFFICIENCY, ENERGY SAVING

Smart shape, giant strength

Perfect match between power and speed, unrivalled work efficiency in the industry.



Photo may include optional equipment.



RELIABILITY & DURABILITY

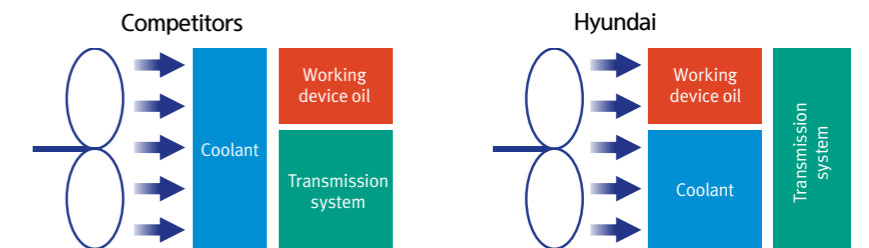
Low oil temperature for high quality

Greater reliability ensured by efficient cooling, 24 hours continuous work under 45°C environment without risk of overheating.



Cooling System

By improving the cooling system's layout and materials, The unique patented cooling technology greatly reduces hydraulic oil temperature and coolant temperature during operation time, thus resolving the high temperature problem that has been hanging over the industry for many years. The machine is guaranteed not to overheat even after 24hrs of continuous work under 45°C atmospheric temperature.



Hydraulic Seal Piping

The adoption of PARKER brand parts has greatly improved the quality of the hydraulic system. In addition, all of the hydraulic parts must satisfy the endurance test standard in South Korea to ensure the high reliability of Hyundai's loaders.



The hinge pins for operating devices in 6 positions have a radius of 5-10mm larger than similar products in the industry. The pin roll sets are made of highly wear-resistant materials and processed with a special heat treatment technology, thus offering greater durability and second-hand residual value.



Wet-Type Pre-Cleaner

Heavy duty type pre-cleaner for dusty environment.



The method of articulating the front and rear frames has been changed by replacing tapered roller bearings with joint bearings, effectively preventing such common problems as loose and breakage in the industry.



* Photo may include optional equipment.

Cabin

The cab's interior features an ergonomic design, a super-large driving space, wider front and rear visual fields, a user-friendly design for easier operability, and industry-leading driving comfort.



Deluxe Seat

High back, deep-seated position, dual armrests and multi-level spring shock absorption guarantee a comfortable operation.



Adjustable Armrest

Entertainment System

High-quality audio entertainment systems (MP3, radio) create a pleasant and relaxed work environment. A USB port is also available for charging mobile phones.



Shock Pad

A new model of shock pad is used to provide stronger durability and reduced shock and noise, effectively relieving the driver's fatigue.



OPERATOR COMFORT

Technology that Respects Human Health and Safety

The whole system comes with a standard integrated driving system that respects human health and safety, relieves fatigue, and improves work efficiency.





MAINTENANCE CONVENIENCE

Professional and Technical Services for Customers



Easy Maintenance

The use of quick-change brake discs allows the user to check brake pads for excessive wear at any time and change the brake pads more easily without needing to remove the tires.



The booster pump delivers a higher augmented-thrust ratio, more stable braking performance, and more convenient daily maintenance thanks to its being mounted on the body's side.



Easy Access

Conveniently located coolant and transmission oil site gauges make checking fluid levels fast and efficient. Ground-level access to fuel and oil filters, grease fittings, fuses, machine components and wide-open covers makes service more convenient.



SPECIFICATIONS

ENGINE	
Maker	Weichai
Model	WD10G220E23
Emission Level	Tier-2
Rated power	162kW / 2,000 rpm
Number of cylinders/bores/strokes	6 / 126 / 130
Displacement	9.7 ℓ
Max. torque	900N.m / 1,300-1,500 rpm

POWER TRAIN		
T/M Type	Power shift	
Speed Range (F/R)	2 / 1	
Forward	1st	12.2
	2nd	38.0
	3rd	-
	4th	-
Reverse	1st	16.5
	2nd	-
	3rd	-
Max. traction force	164 kN	
Drive system	Four-wheel drive	
Rear Axle scillation	11°	
Service brake	Air/Hyd. Caliper	
Tire	23.5-25 16PR	

HYDRAULIC SYSTEM		
MCV Control	Hydraulic	
Pump Type	Gear pump	
Pump displacement	104.9 mL/r	
System pressure	17 MPa	
Cycle time	Lifting	5.6 s
	Dumping	1.4 s
	Lowering	3.0 s
	Total	10.0 s

GENERAL OVERVIEW	
Operating Weight	17 ton
Bucket Capacity (Heaped)	3.0 m³
Rated load	5,000 kg
Breakout force	159 kN
Tipping load (full turn)	10,400 kg

SERVICE REFILL CAPACITY	
Fuel tank	300 ℓ
Hydraulic oil tank	245 ℓ
Engine oil	19 ℓ
Transmission oil	49 ℓ
Axle oil (front/rear)	27 ℓ / 27 ℓ

STANDARD / OPTION		
2 Head light		●
2 Work light on cabin		●
2 Work light on Rear Grill		●
2 Rear combi Light		●
Electric Horn		●
Tilting Steering column		●
2" retractable seat belt & adjustable seat		●
Front Wiper and Washer		●
Joystick pilot control		●
USB/MP3 Radio		●
Air-conditioning system		●
Defroster		●
Long Boom		○
Super Long Boom		○
Aux. Piping		○
Quick Coupler		○
2.7m³ 1 Piece Tooth (Long Boom)		○
2.9m³ Cutting Edge (Q/Coupler)		○
3.0m³ 1 Piece Tooth		●
3.0m³ 1 Piece Tooth (Q/Coupler)		○
3.0m³ 2 Piece Tooth		○
3.2m³ Cutting Edge (83mm)		○
4.0m³ Light Material Bucket		○
Pallet Fork		○
Log Fork		○
Grass Grapple		○
Snow Blade		○
Closed Sweeper (Front-Set Type)		○
3-Spool MCV		○
Tubeless Tire		○
Tubeless Tire for Desert		○
Tube Tire for Desert		○
Tinted Glass		○
Fuel Filler Pump		○
Wheel Chock		×
Wet Pre-Cleaner		○
Clutch Cut Off		○
Rotating Beacon		○
ROPS		○

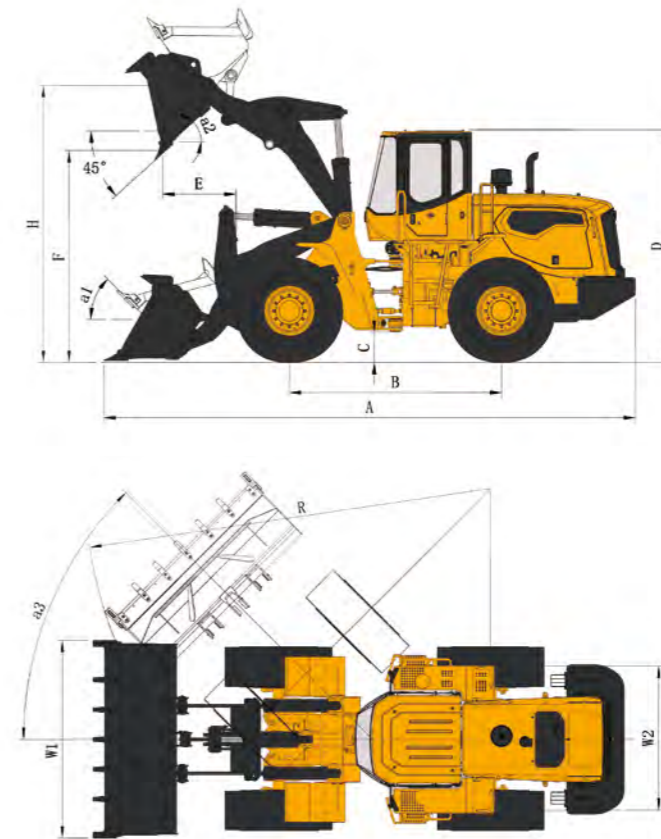
* ●: STD, ○: Option ×: N/A

NOISE	
Operator sound pressure level	≤ 80 dB(A)
Hydraulic oil tank	≤ 108.7 dB(A)

DIMENSIONS & SPECIFICATIONS

DIMENSIONS

All dimensions are approximate.



GENERAL SPECIFICATION	
Operating Weight	17 ton
Machine Dimensions (A x W1 x D)	8,020 X 2,992 X 3,450 mm
Ground Clearance (C)	420 mm
Wheel Base (B)	3,200 mm
Tread (W2)	2,174 mm
Turning Radius (Out tire edge)	5,630 mm
Steering Angle (a3)	40°

WORKING RANGE	
Dumping Height (F)	3,089 mm
Dump Reach (E)	1,308 mm
Max. Dump Angle (a2)	49°
Max. Tilt Angle on Ground (a1)	45°
Pin Hinge Height (H)	4,150 mm
Turning Radius (Out tire edge)	5,630 mm
Steering Angle (a3)	40°

MEMO

MEMO