

# HX520 L

With Tier 3 / Stage IIIA Engine Installed



Head Office(Sales Office)  
14F, GLOBAL R&D CENTER, 477 BUNDANG SUSEO-RO, BUNDANG-GU, SEONGNAM-SI, GYEONGGI-DO, 13553, KOREA

PLEASE CONTACT

**Gross Power**  
250 kW (335 HP) at 2100 rpm

**Net Power**  
246 kW (330 HP) at 2100 rpm

**Bucket Capacity**  
1.00 ~ 3.20 m<sup>3</sup>

**Operating Weight**  
52,370 kg

# RULE THE GROUND

HX520 L

The HX Series exceeds customer's expectation!  
Become a true leader on the ground with HCE's HX Series.

## WORK MAX, WORTH MAX

- IPC (Intelligent Power Control) **Upgrade**
- Attachment Flow Control **Option**
- New Cooling System with Increased Air Flow
- Fuel Rate Information
- ECO Gauge
- Enlarged Air Inlet with Grill Cover

## MORE RELIABLE, MORE SUSTAINABLE

- Durable Cooling Module
- Reinforced Pin, Bush, and Polymer Shim
- Reinforced Durability of Upper and Lower Structure and Attachments
- Wear Resistant Cover Plate
- Hi-grade (High-pressure) Hoses

## INFOTAINMENT FRONTIER

- Proportional Auxiliary Hydraulic System **Option**
- Quick Coupler Button **Option**
- New Front Side Air Conditioning Systems
- Intelligent and Wide Cluster
- New Air Conditioning System
- Audio System



## MODERN COMFORT, SIMPLE AND SAFE SOLUTION

- AAVM (Advanced Around View Monitoring) Camera System **Option**
- Hi MATE (Remote Management System) **Option**
- Swing Lock System **Option**
- Cab Suspension Mount

\*Photo may include optional equipment.



# WORK MAX, WORTH MAX

## Fuel Efficient System Allows Great Performance

HX Series has an eco-friendly, high-performance engine which ensures both excellent fuel efficiency and high power. With outstanding operating performance proven by rigorous tests at various work sites, it will satisfy any customer's needs.

## New Variable Power Control

HX Series minimizes equipment input and output control signals to improve fuel efficiency. Its three-stage power mode ensures the highest performance in any operating environment.



\* **P(power) mode** : Maximizes speed and power of the equipment for heavy load work.



\* **S(standard) mode** : Optimizes performance and fuel efficiency of the equipment for general load work.



\* **E(economy) mode** : Improves the control system for light load work.

## BETTER FUEL-EFFICIENCY (Compared to 9 Series)

Truck Loading

9%

Leveling

15%

Daily Fuel Efficiency

12%



\* Photo may include optional equipment.

15% increased greater screen from 7 to 8 inch is applied in HX Series. More functions and better resolution are available with adding premium options.

## IPC (Intelligent Power Control)

Upgrade

HX Series adopts the upgraded IPC system. It is able to optimize pump flow rate and power at the various working condition through the individual pump control. Furthermore, optimized design of MCV and pipe line minimizes energy loss such as conflux and throttle loss.



## Attachment Flow Control **Option**

HX Series improves pump flow rate by independent control of two pumps. It optimizes attachments for effective flow rate setting depending on attachments (ten breaker types and ten crusher types), enabling various operations matching the site environments.



## Eco Gauge

Eco gauge enables economic operation of machines. The gauge level and color displays engine torque and fuel efficiency level. On top of that, the status of fuel consumption such as average rate and the total amount of fuel consumed is displayed. Hourly and daily based fuel consumption can be checked in the detailed menu as well.



## Fuel Rate Information



## Durable Cooling Module

HX Series has a durable cooling module that passed stringent tests, demonstrating the highest productivity in tough working environments.



## Enlarged Air Inlet with Grill Cover

Enlarged vent hole of the air inlet side cover and fine net grill to prevent penetration of foreign materials further improve durability.





# MORE RELIABLE, MORE SUSTAINABLE

## New Exterior Design for Robustness and Safety

The true value of HX Series lies in its durability. The robust frame structure and the attachments show the real value of HX Series in tough working environments and promise higher productivity.



We make the best performance in rough working conditions without any unsureness with trustworthy HX520L.



## Durable Cooling Module

HX Series has a durable cooling module that passed stringent tests, demonstrating the highest productivity in tough working environments.

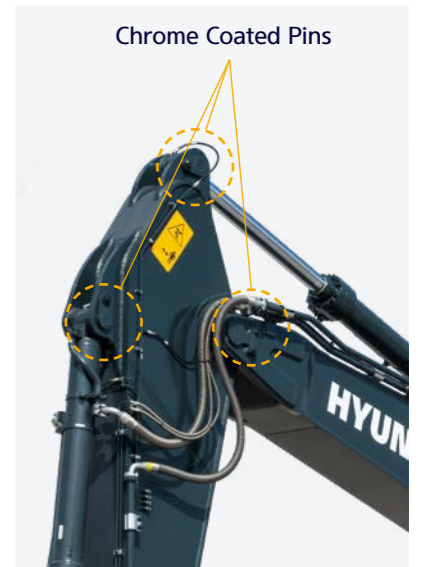
## Reinforced Durability of Upper and Lower Structure and Attachments

The upper and lower structure and attachments of HX Series have higher durability than demanded on the site, as proven through numerous tests including road tests and virtual simulation. The wear resistance of the bucket has been improved by use of new material.



## Reinforced Pins, Bushing, and Polymer Shims

HX Series improves lubricity of connecting parts between the equipment and attachments. Gaps with attachments are minimized by wear-resistant long-life pins, bushes, and polymer shims, supporting the highest performance with invariable durability.



## Wear Resistant Cover Plate

A wear-resistant cover plate is installed at the end of the arm to minimize abrasion on the connector between the arm and the bucket. Vibration reduction of buckets enables more stable operation even in high-load work.

## Hi-grade (High-pressure) Hoses

HX Series uses high-pressure hoses with improved heat and pressure resistance, greatly increasing the durability of the equipment.

\* Photo may include optional equipment.

13%

CABIN SPACE FOR DRIVERS INCREASED BY (compared to the previous model)

310mm  
340mm



# INFOTAINMENT FRONTIER

## Improved Instrument Panel for Easier Monitoring

Many electronic functions are concentrated in the most convenient spot for operators to improve work efficiency. The highly-advanced infotainment system, a product of HCE's intensive information technology development, enables both productivity and comfort while working! HX Series is designed with the operator in mind.

\* Photo may include optional equipment.

## New Front Side Air-conditioning System

The ventilation is designed for both warm and cool air reaching to operator's faces. It could help operators create more neat and enjoyable atmosphere through indoor air circulation.



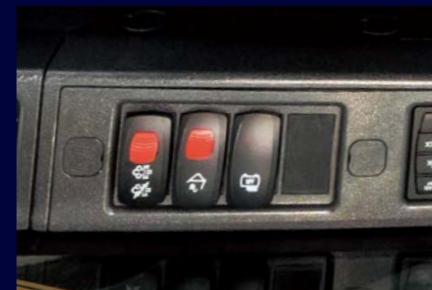
## Audio System

The radio player with a USB-based MP3 player, an integrated Bluetooth hands-free feature, and a built-in microphone allow for phone calls while at work and in transit. The radio player is conveniently located on the right side of the operator to allow for improved access.



## Quick Coupler Button Option

Easy attachment replacement of equipment is available with quick coupler button.



## Proportional Auxiliary Hydraulic System Option

Proportional control switch with better speed control helps operators to enlarge the operation convenience whenever they do time-consuming work.



## Intelligent and Wide Cluster

The 8" capacitive-type display (like smartphone display) of HX Series is delivering excellent legibility. The centralized switches on the display allow convenience of checking temperature outside the cabin.



\* The above image is 'Premium Type'

## New Air Conditioning System

Front side Air Vent holes make operators more convenient and fresh through direct air flow to driver's face, foot and body.





# MODERN COMFORT, SIMPLE AND SAFE SOLUTION

## New Cabin for More Comfort

Low noise, low vibration, and ergonomic design make the cabin space more comfortable and pleasant! With focus on safety and convenience of operators, HX Series allows rapid and safe equipment inspection anytime and anywhere, providing an optimal environment for operators to work.



## Hi MATE

Option

### IT'S CONVENIENT, EASY AND VALUABLE

Hi MATE Hyundai's newly developed remote management system, utilizes GPS-satellite technology to provide customers with the highest level of service and product support available. Hi MATE enables users to remotely evaluate machine performance, access diagnostic information, and verify machine locations at the touch of a button.

### WHAT IS BENEFITS



#### Increase Productivity

It helps you operate machines in efficient. You can check the difference between total engine hours and actual working hours. See how productive your machines are and plan any required cost saving solutions. Hi MATE offers working information such as working / idling hours, fuel consumption and rate.



#### Convenient and Easy Monitoring

There is nothing much to do to monitor your machines. Just log on to the Hi MATE website or mobile application. Hi MATE allows you to watch your machines whenever and wherever you are.



#### Security

Protect your machines from theft or unauthorized usage with Hi MATE. If the machine moves out of the Geofence boundary, you will get alerts.



**HX520L with advanced technology ensures our safety on a construction site.**

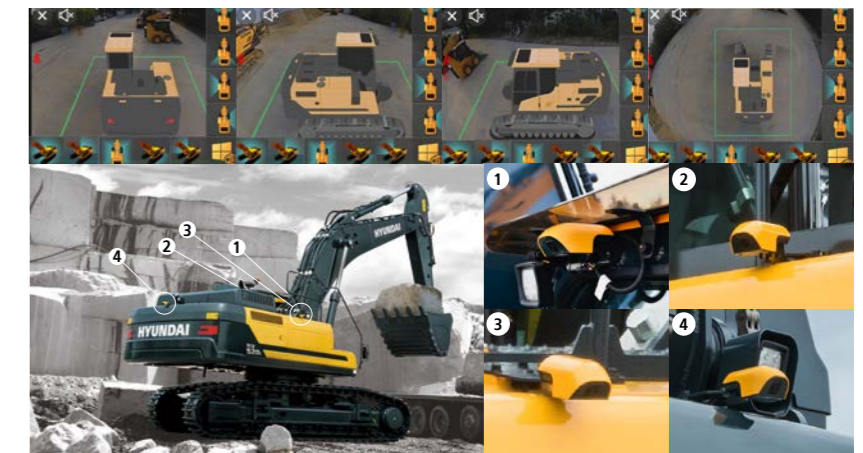


HX Series excavators are products of HCE's spirit of initiative, creativity, and strong drive. HCE engineers, who are the best in the industry, have worked tirelessly to offer a zero-defect product. The new HX Series reflects customers' needs in the field gleaned by thorough monitoring.

### AAVM(Advanced Around View Monitoring) Camera System **Option**

HX Series has a state-of-the-art AAVM video camera system to secure field of vision for operators in all directions, thereby preventing accidents. Operators can easily check the workplace in the front and rear and to the right and left.

- **AAVM**(Advanced Around View Monitoring) : Secure field of vision in all directions by ten views including 3D bird's eye view and 2D/4CH view.
- **IMOD**(Intelligent Moving Object Detection) : Inform when pedestrians or dangerous objects are moving around the machine waiting for work.



### Swing Lock System **Option**

Swing lock system is provided to maintain stability when swing movement needs to be limited, improving operating speed and productivity.

### Cabin Suspension Mount

With a low-vibration design by the coil spring and damper inside the mount, the cab suspension mount of HX Series reduces noise inside the cabin and improves durability, providing a comfortable operation space that lessens operators' fatigue.

# SPECIFICATIONS

## ENGINE

Maker / Model	CUMMINS / X12
Type	6 cylinder, water cooled, 4-cycle, turbocharged charge air cooled, direct injection, electronic controlled diesel engine.
Gross Power	250 kW (335 hp) at 2,100 rpm
Net Power	246 kW (330 hp) at 2,100 rpm
Max. Power	276 kW (370 hp) at 1,800 rpm
Peak Torque	1,674 N · m (1,235 lb-ft) at 1,400 rpm
Displacement	11.8 ℓ (720 cu in)
Operating Altitude (w/o derate)	2,000 m (6,562 ft)

## HYDRAULIC SYSTEM

### MAIN PUMP

Type	Variable displacement axial piston pumps
Max. Flow	2 × 394 lpm (104.0 US gpm / 86.7 UK gpm) 1 × 23.9 lpm (6.3 US gpm / 5.3 UK gpm)
Sub-Pump For Pilot Circuit	Gear pump

Cross-sensing and fuel saving pump system

### HYDRAULIC MOTORS

Travel	Two speed axial pistons motor with brake valve and parking brake
Swing	Axial piston motor with automatic brake

### RELIEF VALVE SETTING

Implement Circuits	330 kgf/cm <sup>2</sup> (4,694 psi)
Travel	360 kgf/cm <sup>2</sup> (5,120 psi)
Power Boost (boom, arm, bucket)	360 kgf/cm <sup>2</sup> (5,120 psi)
Swing Circuit	285 kgf/cm <sup>2</sup> (4,053 psi)
Pilot Circuit	40 kgf/cm <sup>2</sup> (569 psi)
Service Valve	Installed

### HYDRAULIC CYLINDERS

No. of Cylinder Bore X Stroke	Boom 2-∅170 × 1,580 mm
	Arm 1-∅190 × 1,850 mm
	Bucket 1-∅170 × 1,360 mm
	1-∅160 × 1,360 mm
Only	9,000mm (29' 6") Boom & 6,000mm (19' 8") Arm

## DRIVES & BRAKES

Drive Method	Fully hydrostatic type
Drive Motor	Axial piston motor, in-shoe design
Reduction System	Planetary reduction gear
Max. Drawbar Pull	39,674 kgf (87,466 lbf)
Max. Travel Speed (High / Low)	3.3 km/hr (2.1 mph) / 5.3 km/hr (3.3 mph)
Gradeability	35° (70%)
Parking Brake	Multi wet disc

## CONTROL

Pilot pressure operated joysticks and pedals with detachable lever provide almost effortless and fatigueless operation.

Pilot Control	Two joysticks with one safety lever (LH) : Swing and arm, (RH) : Boom and bucket (ISO)
Traveling and Steering	Two levers with pedals
Engine Throttle	Electric, dial type

## SWING SYSTEM

Swing Motor	Axial piston motor
Swing Reduction	Planetary gear reduction
Swing Bearing Lubrication	Grease-bathed
Swing Brake	Multi wet disc
Swing Speed	8.5 rpm

## SERVICE REFILL CAPACITIES

	liter	US gal	UK gal
Fuel tank	660	174.35	145.18
Engine coolant	43	11.3	9.4
Engine oil	34	9.0	7.5
Swing device	7	1.8	1.5
Final drive (each)	13	3.4	2.9
Hydraulic system (including tank)	499	131.7	109.7
Hydraulic tank	275	72.6	60.4

## UNDERCARRIAGE

The X-leg type center frame is integrally welded with reinforced box-section track frames. The undercarriage includes lubricated rollers, idlers, track adjusters with shock absorbing springs and sprockets, and a track chain with double or triple grouser shoes.

Center frame	X - leg type
Track frame	Pentagonal box type
No. of shoes on each side	53 EA
No. of carrier roller on each side	3 EA
No. of track roller on each side	9 EA
No. of rail guard on each side	2 EA

## OPERATING WEIGHT (APPROXIMATE)

Operating weight, including 7,060mm (23' 2") boom, 3,380mm (11' 1") arm, SAE heaped 2.2m<sup>3</sup> (2.88 yd<sup>3</sup>) bucket, lubricant, coolant, full fuel tank, full hydraulic tank, and all standard equipments.

### OPERATING WEIGHT

Shoes	Operating weight	Ground pressure	
Type	Width mm (in)	kg (lb)	
Triple grouser	600 (24")	52,055 (114,760)	0.90 (12.9)
	700 (28")	52,575 (115,910)	0.78 (11.1)
	800 (32")	53,105 (117,080)	0.69 (9.8)
Double grouser	600HD (24")	52,235 (115,160)	0.91 (12.9)
	600 (24")	52,090 (114,840)	0.90 (12.7)

## AIR CONDITIONING SYSTEM

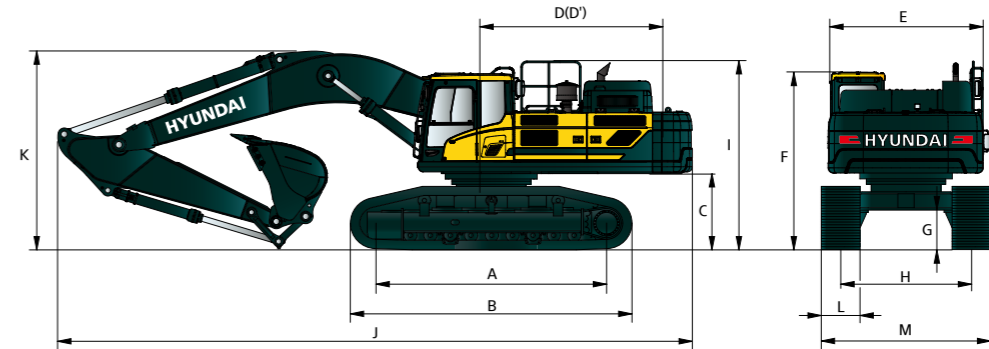
The air condition system for the machine contains the fluorinated greenhouse gas with global warming potential of R134a. (Global Warming Potential : 1430)

The system hold 0.8kg refrigerant consisting of a CO<sub>2</sub> equivalent 1.14kg metric tonne. For more information, Please refer to the manual.

# DIMENSIONS & WORKING RANGE

## HX520L DIMENSIONS

6.55 m (21' 6"), 7.06 m (23' 2"), 9.0 m (29' 6") BOOM and 2.55 (8' 4"), 2.9 m (9' 6"), 3.38 m (11' 1"), 4.0 m (13' 1"), 6.0 m (19' 8") ARM



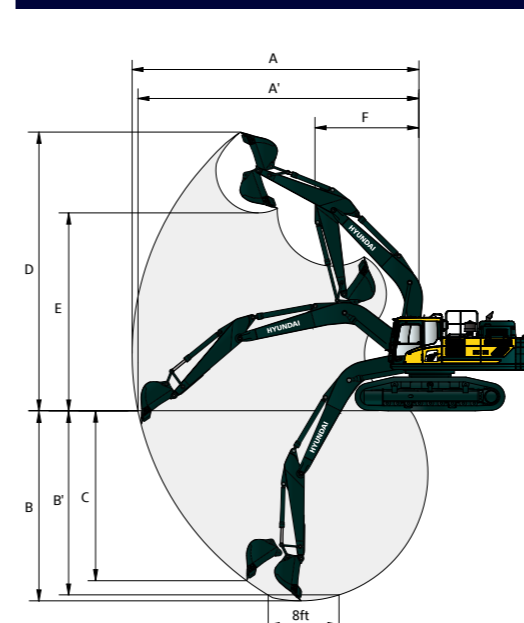
Unit : mm (t-in)

A Tumbler Distance	4,475 (14' 8")
*B Overall Length of Crawler	5,480 (17' 12")
*C Ground Clearance of Counter Weight	1,445 (4' 9")
D Tail Swing Radius	3,800 (12' 6")
D' Rear-End Length	3,745 (12' 3")
E Overall Width of Upper Structure	2,980 (9' 9")
*F Overall Height of Cab	3,420 (11' 3")
*G Min. Ground Clearance	770 (2' 6")
H Track gauge	Extended 2,970 (9' 9")
	Retracted 2,410 (7' 11")
*I Overall Height Guardrail	3,600 (11' 10")

\* This figure includes the size of grousers.

		6,550 (21' 6")			7,060 (23' 2")			9,000 (29' 6")
		2,550 (8' 4")	2,900 (9' 6")	2,550 (8' 4")	2,900 (9' 6")	3,380 (11' 1")	4,000 (13' 1")	6,000 (19' 8")
Boom Length		6,550 (21' 6")			7,060 (23' 2")			9,000 (29' 6")
Arm Length		2,550 (8' 4")	2,900 (9' 6")	2,550 (8' 4")	2,900 (9' 6")	3,380 (11' 1")	4,000 (13' 1")	6,000 (19' 8")
J Overall Length		11,680 (38' 4")	11,690 (38' 4")	12,200 (40' 0")	12,210 (40' 1")	12,160 (39' 11")	12,150 (39' 10")	14,080 (46' 2")
*K Overall Height of Boom		3,920 (12' 10")	3,970 (13' 0")	3,830 (12' 7")	3,890 (12' 9")	3,850 (12' 8")	3,980 (13' 1")	3,970 (13' 0")
L Track Shoe Width		600 (24")		700 (28")		800 (32")		
M Overall gauge	Extended	3,570 (11' 9")		3,670 (12' 0")		3,770 (12' 4")		
	Retracted	3,010 (9' 11")		3,110 (10' 2")		3,210 (10' 6")		

## HX520L WORKING RANGE



Unit : mm (ft-in)

		6,550 (21' 6")		7,060 (23' 2")			9,000 (29' 6")	
		2,550 (8' 4")	2,900 (9' 6")	2,550 (8' 4")	2,900 (9' 6")	3,380 (11' 1")	4,000 (13' 1")	6,000 (19' 8")
Boom length		6,550 (21' 6")		7,060 (23' 2")			9,000 (29' 6")	
Arm length		2,550 (8' 4")	2,900 (9' 6")	2,550 (8' 4")	2,900 (9' 6")	3,380 (11' 1")	4,000 (13' 1")	6,000 (19' 8")
A Max. digging reach		10,870 (35' 8")	11,130 (36' 6")	11,410 (37' 5")	11,670 (38' 3")	12,060 (39' 7")	12,610 (41' 4")	16,110 (52' 10")
A' Max. digging reach on ground		10,610 (34' 10")	10,890 (35' 9")	11,170 (36' 8")	11,440 (37' 7")	11,840 (38' 10")	12,400 (40' 8")	15,940 (52' 4")
B Max. digging depth		6,380 (20' 11")	6,730 (22' 1")	6,820 (22' 5")	7,170 (23' 6")	7,650 (25' 1")	8,270 (27' 2")	11,550 (37' 11")
B' Max. digging depth (8' level)		6,210 (20' 4")	6,570 (21' 7")	6,650 (21' 10")	7,010 (23' 0")	7,510 (24' 8")	8,140 (26' 8")	11,450 (37' 7")
C Max. vertical wall digging depth		4,760 (15' 7")	4,820 (17' 9")	5,200 (17' 1")	5,630 (18' 6")	5,410 (17' 9")	6,090 (20' 0")	8,580 (28' 2")
D Max. digging height		10,760 (35' 4")	10,730 (35' 2")	11,150 (36' 7")	11,170 (36' 8")	11,140 (36' 7")	11,410 (37' 5")	13,180 (43' 3")
E Max. dumping height		7,290 (23' 11")	7,220 (23' 8")	7,680 (25' 2")	7,710 (25' 4")	7,790 (25' 7")	8,000 (26' 3")	9,880 (32' 5")
F Min. swing radius		4,440 (14' 7")	4,390 (14' 7")	4,820 (15' 10")	4,880 (16' 0")	4,870 (16' 0")	4,630 (15' 2")	5,630 (18' 6")

# LIFTING CAPACITY

Rating over-front Rating over-side or 360 degree

## HX520L MONO BOOM

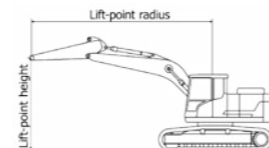
6.55 m (21' 6") boom, 2.55 m (8' 4") arm equipped with 600 mm (24") triple grouser shoe.

Lift-point height (m/ft)		Lift-point radius										At max. reach		
		3.0m (9.8ft)		4.5m (14.8ft)		6.0m (19.7ft)		7.5m (24.6ft)		9.0m (29.5ft)		Capacity		Reach
														m (ft)
9.0m	kg											*13,740	*13,740	5.92
29.5ft	lb											*30,290	*30,290	(19.4)
7.5m	kg					*13,220	*13,220					*12,550	*12,550	7.29
24.6ft	lb					*29,150	*29,150					*27,670	*27,670	(23.9)
6.0m	kg					*14,060	*14,060	*12,430	12,150			*12,050	10,550	8.17
19.7ft	lb					*31,000	*31,000	*27,400	26,790			*26,570	23,260	(26.8)
4.5m	kg			*20,650	*20,650	*15,550	*15,550	*13,010	11,830			*11,820	9,390	8.70
14.8ft	lb			*45,530	*45,530	*34,280	*34,280	*28,680	26,080			*26,060	20,700	(28.5)
3.0m	kg					*17,050	15,740	*13,700	11,450			*11,730	8,840	8.94
9.8ft	lb					*37,590	34,700	*30,200	25,240			*25,860	19,490	(29.3)
1.5m	kg					*17,930	15,160	*14,130	11,120			*11,690	8,720	8.93
4.9ft	lb					*39,530	33,420	*31,150	24,520			*25,770	19,220	(29.3)
0.0m	kg			*21,780	*21,780	*17,810	14,880	*14,000	10,930			*11,610	9,020	8.66
0.0ft	lb			*48,020	*48,020	*39,260	32,800	*30,860	24,100			*25,600	19,890	(28.4)
-1.5m	kg	*16,090	*16,090	*21,090	*21,090	*16,590	14,850	*12,900	10,920			*11,370	9,900	8.10
-4.9ft	lb	*35,470	*35,470	*46,500	*46,500	*36,570	32,740	*28,440	24,070			*25,070	21,830	(26.6)
-3.0m	kg	*20,140	*20,140	*17,510	*17,510	*13,900	*13,900					*10,640	*10,640	7.18
-9.8ft	lb	*44,400	*44,400	*38,600	*38,600	*30,640	*30,640					*23,460	*23,460	(23.6)
-4.5m	kg													
-14.8ft	lb													

6.55 m (21' 6") boom, 2.90 m (9' 6") arm equipped with 600 mm (24") triple grouser shoe.

Lift-point height (m/ft)		Lift-point radius										At max. reach		
		3.0m (9.8ft)		4.5m (14.8ft)		6.0m (19.7ft)		7.5m (24.6ft)		9.0m (29.5ft)		Capacity		Reach
														m (ft)
9.0m	kg											*11,720	*11,720	6.31
29.5ft	lb											*25,840	*25,840	(20.7)
7.5m	kg							*11,790	*11,790			*10,850	*10,850	7.61
24.6ft	lb							*25,990	*25,990			*23,920	*23,920	(25.0)
6.0m	kg					*13,430	*13,430	*11,920	*11,920			*10,600	10,000	8.45
19.7ft	lb					*29,610	*29,610	*26,280	*26,280			*23,370	22,050	(27.7)
4.5m	kg			*19,570	*19,570	*14,950	*14,950	*12,570	11,830			*10,730	8,940	8.97
14.8ft	lb			*43,140	*43,140	*32,960	*32,960	*27,710	26,080			*23,660	19,710	(29.4)
3.0m	kg			*22,960	*22,960	*16,550	15,760	*13,340	11,410	*11,410	8,710	*11,190	8,410	9.21
9.8ft	lb			*50,620	*50,620	*36,490	34,740	*29,410	25,150	*25,150	19,200	*24,670	18,540	(30.2)
1.5m	kg			*19,880	*19,880	*17,610	15,100	*13,890	11,040	*11,490	8,540	*11,210	8,280	9.19
4.9ft	lb			*43,830	*43,830	*38,820	33,290	*30,620	24,340	*25,330	18,830	*24,710	18,250	(30.2)
0.0m	kg			*23,620	22,640	*17,730	14,740	*13,920	10,810			*11,210	8,540	8.93
0.0ft	lb			*52,070	49,910	*39,090	32,500	*30,690	23,830			*24,710	18,830	(29.3)
-1.5m	kg	*17,060	*17,060	*21,710	*21,710	*16,790	14,650	*13,120	10,750			*11,100	9,290	8.39
-4.9ft	lb	*37,610	*37,610	*47,860	*47,860	*37,020	32,300	*28,920	23,700			*24,470	20,480	(27.5)
-3.0m	kg	*22,460	*22,460	*18,470	*18,470	*14,520	*14,520	*10,680	*10,680			*10,650	*10,650	7.51
-9.8ft	lb	*49,520	*49,520	*40,720	*40,720	*32,010	*32,010	*23,550	*23,550			*23,480	*23,480	(24.6)
-4.5m	kg			*13,060	*13,060	*9,620	*9,620					*9,150	*9,150	6.15
-14.8ft	lb			*28,790	*28,790	*21,210	*21,210					*20,170	*20,170	(20.2)

- Lifting capacity are based on ISO 10567.
- Lifting capacity of the HX Series does not exceed 75% of tipping load with the machine on firm, level ground or 87% of full hydraulic capacity.
- The Lift-point is bucket pivot mounting pin on the arm(without bucket mass).
- (\*) indicates load limited by hydraulic capacity.



Rating over-front Rating over-side or 360 degree

## HX520L MONO BOOM

7.06 m (23' 2") boom, 2.55 m (8' 4") arm equipped with 600 mm (24") triple grouser shoe.

Lift-point height (m/ft)		Lift-point radius										At max. reach				
		3.0m (9.8ft)		4.5m (14.8ft)		6.0m (19.7ft)		7.5m (24.6ft)		9.0m (29.5ft)		Capacity		Reach		
														m (ft)		
9.0m	kg													*12,280	*12,280	6.71
29.5ft	lb													*27,070	*27,070	(22.0)
7.5m	kg									*11,560	*11,560			*11,450	11,150	7.94
24.6ft	lb									*25,490	*25,490			*25,240	24,580	(26.1)
6.0m	kg							*13,750	*13,750	*11,880	*11,880			*11,080	9,420	8.75
19.7ft	lb							*30,310	*30,310	*26,190	*26,190			*24,430	20,770	(28.7)
4.5m	kg					*15,380	*15,380	*12,620	11,690	*11,070	8,870	*10,910	8,480	9.25		
14.8ft	lb					*33,910	*33,910	*27,820	25,770	*24,410	19,550	*24,050	18,700	(30.3)		
3.0m	kg					*16,910	15,380	*13,390	11,260	*11,340	8,670	*10,840	8,020	9.48		
9.8ft	lb					*37,280	33,910	*29,520	24,820	*25,000	19,110	*23,900	17,680	(31.1)		
1.5m	kg					*17,700	14,830	*13,880	10,920	*11,470	8,500	*10,810	7,920	9.47		
4.9ft	lb					*39,020	32,690	*30,600	24,070	*25,290	18,740	*23,830	17,460	(31.1)		
0.0m	kg					*17,530	14,590	*13,850	10,720	*11,160	8,400	*10,760	8,160	9.21		
0.0ft	lb					*38,650	32,170	*30,530	23,630	*24,600	18,520	*23,720	17,990	(30.2)		
-1.5m	kg			*20,350	*20,350	*16,450	14,580	*13,080	10,690			*10,600	8,850	8.69		
-4.9ft	lb			*44,860	*44,860	*36,270	32,140	*28,840	23,570			*23,370	19,510	(28.5)		
-3.0m	kg	*18,970	*18,970	*17,470	*17,470	*14,320	*14,320	*11,040	10,870			*10,090	*10,090	7.84		
-9.8ft	lb	*41,820	*41,820	*38,510	*38,510	*31,570	*31,570	*24,340	23,960			*22,240	*22,240	(25.7)		
-4.5m	kg			*12,820	*12,820	*10,190	*10,190					*8,660	*8,660	6.55		
-14.8ft	lb			*28,260	*28,260	*22,470	*22,470					*19,090	*19,090	(21.5)		

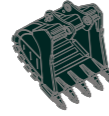
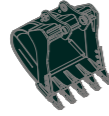
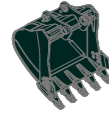
7.06 m (23' 2") boom, 2.90 m (9' 6") arm equipped with 600 mm (24") triple grouser shoe.

Lift-point height (m/ft)		Lift-point radius										At max. reach				
		3.0m (9.8ft)		4.5m (14.8ft)		6.0m (19.7ft)		7.5m (24.6ft)		9.0m (29.5ft)		Capacity		Reach		
														m (ft)		
9.0m	kg													*11,430	*11,430	7.08
29.5ft	lb													*25,200	*25,200	(23.2)
7.5m	kg									*10,990	*10,990			*10,780	10,500	8.26
24.6ft	lb									*24,230	*24,230			*23,770	23,150	(27.1)
6.0m	kg					*13,130	*13,130	*11,410	*11,410	*10,500	9,010	*10,480	8,940	9.04		
19.7ft	lb					*28,950	*28,950	*25,150	*25,150	*23,150	19,860	*23,100	19,710	(29.7)		
4.5m	kg			*20,070	*20,070	*14,790	*14,790	*12,200	11,690	*10,710	8,850	*10,370	8,080	9.52		
14.8ft	lb			*44,250	*44,250	*32,610	*32,610	*26,900	25,770	*23,610	19,510	*22,860	17,810	(31.2)		
3.0m	kg					*16,410	15,390	*13,040	11,220	*11,060	8,610	*10,340	7,640	9.74		
9.8ft	lb					*36,180	33,930	*28,750	24,740	*24,380	18,980	*22,800	16,840	(32.0)		
1.5m	kg					*17,390	14,750	*13,630	10,840	*11,290	8,400	*10,370	7,520	9.73		
4.9ft	lb					*38,340	32,520	*30,050	23,900	*24,890	18,520	*22,860	16,580	(31.9)		
0.0m	kg			*15,060	*15,060	*17,450	14,430	*13,740	10,600	*11,160	8,280	*10,380	7,720	9.48		
0.0ft	lb			*33,200	*33,200	*38,470	31,810	*30,290	23,370	*24,600	18,250	*22,880	17,020	(31.1)		
-1.5m	kg			*21,050	*21,050	*16,610	14,370	*13,170	10,530			*10,310	8,320	8.98		
-4.9ft	lb			*46,410	*46,410	*36,620	31,680	*29,030	23,210	</						



# BUCKET SELECTION GUIDE & DIGGING FORCE

## BUCKETS



	GP	HD	Rock-HD	Rock-HD(Special)	Rock-HD(Special)
SAE heaped	1.00 (1.31)	2.43 (3.18)	2.20 (2.88)	1.81 (2.37)	2.70 (3.53)
m <sup>3</sup> (yd <sup>3</sup> )	1.38 (1.80)	3.20 (4.19)	2.43 (3.18)		3.00 (3.92)
	2.20 (2.88)		2.79 (3.65)		
	2.79 (3.65)		3.20 (4.19)		
	3.00 (3.92)				

Capacity m <sup>3</sup> (yd <sup>3</sup> )		Width mm (in)	Weight kg (lb)	Tooth (EA)	Recommendation mm (ft.in)						
SAE Heaped	CECE Heaped				6,550 (21' 6") Boom		7,060 (23' 2") Boom		9,000 (29' 6") Boom		
					2,550 (8' 4") Arm	2,900 (9' 6") Arm	2,550 (8' 4") Arm	2,900 (9' 6") Arm	3,380 (11' 1") Arm	4,000 (13' 1") Arm	6,000 (19' 8") Arm
(G)	1.00 (1.31)	0.90 (1.18)	940 (37.0")	1,425 (3,140)	3	●	●	●	●	●	●
(G)	1.38 (1.80)	1.24 (1.62)	1,130 (44.5")	1,640 (3,620)	4	●	●	●	●	●	●
(G)	2.20 (2.88)	1.93 (2.52)	1,600 (63.0")	2,020 (4,450)	5	●	●	●	●	●	●
(G)	2.79 (3.65)	2.46 (3.22)	1,795 (70.7")	2,295 (5,060)	5	●	●	●	●	●	●
(G)	3.00 (3.92)	2.64 (3.45)	1,905 (75.0")	2,425 (5,350)	6	●	●	●	●	●	●
(H)	2.43 (3.18)	2.11 (2.76)	1,745 (68.7")	2,445 (5,390)	5	●	●	●	●	●	●
(H)	3.20 (4.19)	2.82 (3.69)	2,015 (79.3")	2,860 (6,310)	6	●	●	●	●	●	●
(R)	2.20 (2.88)	1.93 (2.52)	1,600 (63.0")	2,605 (5,740)	5	●	●	●	●	●	●
(R)	2.43 (3.18)	2.11 (2.76)	1,745 (68.7")	2,730 (6,020)	5	●	●	●	●	●	●
(R)	2.79 (3.65)	2.46 (3.22)	1,795 (70.7")	2,970 (6,550)	5	●	●	●	●	●	●
(R)	3.00 (3.92)	2.64 (3.45)	1,905 (75.0")	3,115 (6,870)	6	●	●	●	●	●	●
(R)	3.20 (4.19)	2.82 (3.69)	2,015 (79.3")	3,235 (7,130)	6	●	●	●	●	●	●
(R)	1.81 (2.37)	1.50 (1.96)	1,325 (52.2")	2,685 (5,920)	4	●	●	●	●	●	●
(R)	2.70 (3.53)	2.39 (3.13)	1,760 (69.3")	2,755 (6,070)	5	●	●	●	●	●	●
(R)	3.00 (3.92)	2.76 (3.61)	1,955 (77.0")	3,040 (6,700)	6	●	●	●	●	●	●

(G) General Purpose

(H) Heavy Duty

(R) Rock-HD

- : Applicable for materials with density of 2,100 kg/m<sup>3</sup> (3,500 lb/yd<sup>3</sup>) or less
- : Applicable for materials with density of 1,800 kg/m<sup>3</sup> (3,000 lb/yd<sup>3</sup>) or less
- : Applicable for materials with density of 1,500 kg/m<sup>3</sup> (2,500 lb/yd<sup>3</sup>) or less
- ▲ : Applicable for materials with density of 1,200 kg/m<sup>3</sup> (2,000 lb/yd<sup>3</sup>) or less
- ✕ : Not Recommended

## ATTACHMENT

Booms and arms are of all-welded, low-stress, full-box section design.

6,550 mm (21' 6"), 7,060 mm (23' 2"), 9,000 mm (29' 6") boom and 2,550 mm (8' 4"), 2,900 mm (9' 6"), 3,380 mm (11' 1"), 4,000 mm (13' 1"),

6,000 mm (19' 8") arms are available, Hyundai Bucket are all-welded, high-strength steel implements.

## DIGGING FORCE

Boom	Length	mm (ft.in)		6,550 (21' 6")				7,060 (23' 2")		9,000 (29' 6")	Remark
		kg (lb)		4,250 (9,370)		4,420 (9,460)		5,040 (11,100)			
Arm	Length	mm (ft.in)		2,550 (8' 4")	2,900 (9' 6")	2,550 (8' 4")	2,900 (9' 6")	3,380 (11' 1")	4,000 (13' 1")	6,000 (19' 8")	Remark
		kg (lb)		2,450 (5,400)	2,630 (5,840)	2,450 (5,400)	2,650 (5,840)	2,650 (5,890)	2,730 (6,020)	3,260 (7,190)	
Bucket Digging Force	SAE	kN		240.3 [262.1]	240.3 [262.1]	240.3 [262.1]	240.3 [262.1]	240.3 [262.1]	240.3 [262.1]	212.8	[ ]: Power Boost
		kgf		24,500 [26,730]	24,500 [26,730]	24,500 [26,730]	24,500 [26,730]	24,500 [26,730]	24,500 [26,730]	21,700	
		lbf		54,010 [58,930]	54,010 [58,930]	54,010 [58,930]	54,010 [58,930]	54,010 [58,930]	54,010 [58,930]	47,840	
	ISO	kN		279.5 [304.9]	279.5 [304.9]	279.5 [304.9]	279.5 [304.9]	279.5 [304.9]	279.5 [304.9]	247.1	
		kgf		28,500 [31,090]	28,500 [31,090]	28,500 [31,090]	28,500 [31,090]	28,500 [31,090]	28,500 [31,090]	25,200	
		lbf		62,830 [68,540]	62,830 [68,540]	62,830 [68,540]	62,830 [68,540]	62,830 [68,540]	62,830 [68,540]	55,560	
Arm Crowd Force	SAE	kN		235.4 [256.7]	218.7 [238.6]	235.4 [256.7]	218.7 [238.6]	198.1 [216.1]	173.6 [189.4]	127.5	
		kgf		24,000 [26,180]	22,300 [24,330]	24,000 [26,180]	22,300 [24,330]	20,200 [20,040]	17,700 [19,310]	13,000	
		lbf		52,910 [57,720]	49,160 [53,640]	52,910 [57,720]	49,160 [53,640]	44,530 [48,590]	39,020 [42,570]	28,660	
	ISO	kN		246.2 [268.5]	227.5 [248.2]	246.2 [268.5]	227.5 [248.2]	205.0 [223.6]	179.5 [195.7]	130.4	
		kgf		25,100 [27,380]	23,200 [25,310]	25,100 [27,380]	23,200 [25,310]	20,900 [22,800]	18,300 [19,960]	13,300	
		lbf		55,340 [60,360]	51,150 [55,800]	55,340 [60,360]	51,150 [55,800]	46,080 [50,270]	40,340 [44,000]	29,320	

Note : Boom weight includes arm cylinder, piping, and pin

Arm weight includes bucket cylinder, linkage, and pin

# STANDARD / OPTION

ENGINE	STD	OPT
Cummins X12	●	
<b>HYDRAULIC SYSTEM</b>		
<b>INTELLIGENT POWER CONTROL (IPC)</b>		
3-power mode, 2-work mode, user mode	●	
Variable Power Control	●	
Pump Flow Control	●	
Attachment Mode Flow Control		●
Engine Auto Idle	●	
Engine Auto Shutdown Control	●	
Hyundai Bio Hydraulic Oil (HBHO)		●
<b>CAB &amp; INTERIOR</b>		
<b>ISO STANDARD CABIN</b>		
Rise-up type windshield wiper	●	
Radio / USB player	●	
Handsfree mobile phone system with USB	●	
12 volt power outlet (24V DC to 12V DC converter)	●	
Electric horn	●	
All-weather steel cab with 360° visibility	●	
Safety glass - Tempered glass	●	
Safety glass - Tempered glass with front laminated glass		●
Sliding fold-in front window	●	
Sliding side window(LH)	●	
Lockable door	●	
Hot & cool box	●	
Storage compartment & Ashtray	●	
Transparent cabin roof-cover	●	
Sun visor	●	
Door and cab locks, one key	●	
Pilot-operated slidable joystick	●	
Console box height adjust system	●	
<b>AUTOMATIC CLIMATE CONTROL</b>		
Air conditioner & heater	●	
Defroster	●	
Starting Aid (air grid heater) for cold weather	●	
<b>CENTRALIZED MONITORING</b>		
8" LCD Display - Normal type	●	
8" LCD Display - Premium type		●
Engine speed or Trip meter/Accel.	●	
Engine coolant temperature gauge	●	
Max power	●	
Low speed/High speed	●	
Auto idle	●	
Overload warning with alarm		●
Check Engine	●	
Air cleaner clogging	●	
Indicators	●	
ECO Gauges	●	
Fuel level gauge	●	
Hyd. oil temperature gauge	●	
Fuel warmer	●	
Warnings	●	
Communication error	●	
Low battery	●	
Clock	●	
Cabin lights		●
Cabin front window rain guard		●
Cabin roof-steel cover		●
<b>SEAT</b>		
Mechanical Suspension with Heater	●	
Mechanical Suspension without Heater		●
Adjustable Air Suspension without Heater		●
Adjustable Air Suspension with Heater		●
<b>OPERATOR PROTECTIVE STRUCTURES</b>		
General		
FOG (Falling Object Guard)	Front & Tops Guard	●
ISO 10262 Level2	Top Guard	●
<b>CABIN ROPS (ISO 12117-2)</b>		
ROPS (Roll Over Protective Structures)	●	

SAFETY	STD	OPT
Battery master switch	●	
Rearview camera		●
AAVM (Advanced Around View Monitoring)		●
Six front working lights (4 boom mounted, 2 front frame mounted)	●	
Travel alarm	●	
Rear work lamp	●	
Beacon lamp		●
Automatic swing brake	●	
Boom holding system	●	
Arm holding system	●	
Safety lock valve for boom cylinder with overload warning device		●
Safety lock valve for arm cylinder		●
Swing Lock System		●
Three outside rearview mirror	●	
<b>ATTACHMENT</b>		
<b>BOOMS</b>		
6.55m, 21' 6"		●
7.06m, 23' 2"	●	
9.00m, 29' 6"		●
<b>ARMS</b>		
2.55 m, 8' 4"		●
2.90 m, 9' 6"		●
3.38 m, 11' 1"	●	
4.00 m, 13' 1"		●
6.00 m, 19' 8"		●
<b>OTHERS</b>		
Removable Clean-Out Dust Net for Cooler	●	
Removable Reservoir Tank	●	
Fuel Pre-Filter	●	
Fuel Warmer	●	
Self-Diagnostics System	●	
Hi MATE (Remote Management System)		●
Batteries (2 × 12 V × 200 AH)	●	
Fuel Filler Pump (50 lpm)		●
Single-Acting Piping Kit (Breaker, etc.)		●
Double-Acting Piping Kit (Clamshell, etc.)		●
Rotating Piping Kit		●
Quick Coupler Piping		●
Quick Coupler		●
Accumulator for Lowering Work Equipment	●	
Pattern Change Valve (2 Patterns)		●
Semi-Auto Grease(Pump&Gun)		●
Air Cleaner - Wet		●
Tool Kit		●
<b>UNDERCARRIAGE</b>		
Lower Frame Under Cover (Additional)		●
Lower Frame Under Cover (Normal)	●	
<b>TRACK SHOES</b>		
Triple Grouser Shoe (600 mm, 24")	●	
Triple Grouser Shoe (700 mm, 28")		●
Triple Grouser Shoe (800 mm, 32")		●
Triple Grousers Shoe HD(600 mm, 24")		●
Double Grouser Shoe (600 mm, 24")		●
Track Rail Guard	●	
Full Track Rail Guard		●

\* Standard and optional equipment may vary. Contact your Hyundai dealer for more information. The machine may vary according to International standards.  
 \* The photos may include attachments and optional equipment that are not available in your area.  
 \* Materials and specifications are subject to change without advance notice.  
 \* All imperial measurements rounded off to the nearest pound or inch.