

HW100A

Wheeled excavator

* Photo may include optional equipment.



Head Office(Sales Office)
14F, GLOBAL R&D CENTER, 477 BUNDANG SUSEO-RO, BUNDANG-GU, SEONGNAM-SI, GYEONGGI-DO, 13553, KOREA

PLEASE CONTACT

Gross Power
75 kW (100 hp) at 2,000 rpm

Bucket Capacity
0.28 m³

Operating Weight
10.7 – 11.1 t

1 more reason to buy a Hyundai Wheeled Excavator

Introducing the new HW100A, the latest addition to our 6 - 21 tonne A-Series range of wheeled excavators. With a powerful but economical Hyundai Tier 4 Final engine and new best-in-class hydraulics, this 10-tonne machine is big on productivity. And, when you add in our high comfort cab featuring a new control cluster and state-of-the-art safety tools like our advanced camera system, there's lots of reasons to buy one.



MORE PRODUCTIVITY & PERFORMANCE

With the large hydraulic capacity of a tool carrier, the ability to work in narrow spaces thanks to boom swing and articulation and unparalleled travel speed of up to 38 km/h, the new HW100A is a compact but powerful machine that's perfectly adaptable to any work site.

Maximum productivity

The HW100A is equipped with the latest generation Hyundai Tier 4 Final engine, which delivers greater fuel efficiency but extremely low emissions.



The high-powered Hyundai Tier 4 Final engine delivers 100HP and peak torque of 430 Nm.



Maximum efficiency

The HW100A is able to reach higher than 6 meters and has huge lifting capacities thanks to front axle lock and balanced weight distribution. A 2-piece boom option further increases versatility and performance.

Easy controls

All tools are easily operated by proportional hydraulics on the joysticks.

More undercarriage options

Optional blades and outriggers for the front and rear provide more stable working and greater possibilities for different applications.

3 Steering modes

The optional 4-wheel steering increases the machine's manoeuvrability (including crab mode) and reduces its turning circle by 2m.

Twin tyres as standard

Providing maximum traction and increased stability.

New driveline

The new travel motor and powershift transmission control in the driveline provide smoother, more comfortable travel, due to improved hydraulic retarding and gear shifting.

Variable pressure turbocharger

Provides optimal air flow to the engine combustion chamber under all speed and load conditions, for cleaner exhaust gas and improved fuel economy.

Auto idle

This useful feature starts up to 4 seconds after all controls are returned to neutral, reducing fuel consumption and noise levels in the cabin.

3 Power modes

The operator can choose from 3 working modes for optimal power and reduced fuel consumption in all conditions.



Automatic travel speed selection offers either increased torque or high speed



INCREASED FUEL EFFICIENCY

COMFORT & EASE OF USE

The new HW100A has a spacious cab, designed to provide you with the best possible working conditions. Its ergonomic controls and easy-to-view color monitor put you in total control.

More comfort

The HW100A has one of the most spacious cabs in the market, with low noise and vibration levels plus excellent all-round visibility. It has an extra-large door for easy access, fully adjustable, heated air suspension seat and climate control as standard for a more comfortable and productive working day.



King size touchscreen

An extra wide 8" touchscreen provides easy scrolling through the different menus, including power and auxiliary hydraulics settings. It also allows you to connect a Bluetooth device or listen to your favourite radio station.



Efficiency at your fingertips

Precise low-effort joysticks plus, clear convenient controls enable you to work safely and smoothly with minimum effort.

Adjustable steering column ^A

Ensures optimal driving and operation positioning.

1-touch deceleration button

Instantly reduces engine speed to low idle.

Memory function

After setting the hydraulic oil flow, several different work tools can be stored in the display for convenient recall.

Proportional thumb switches ^B

Positioned on the joysticks and can be mounted horizontally or vertically to suit the operator.

Proportional auxiliary flow

Provides efficient, precision control when using attachments.



Control your way

The operator can adjust the ergonomic seat and joystick console separately to suit themselves and have control of the boom swing from the joystick.

Cab mounted suspension system

Dampens high vibrations and provides outstanding protection against impact.



MORE SAFETY

With multiple safety features and unrivalled visibility from the cab, the new HW100A offers the ultimate in site and operator safety.



◀ Safety as standard

Standard cab and boom lights (LED as an option) and large side mirrors improve all-round visibility day and night. Other standard safety features include: automatic overheating alarm warning, low oil pressure sensor and engine emergency cut-off switch.



360° visibility with advanced camera system.



360° visibility

A rear-view camera comes as standard while the renowned optional Hyundai AVM (Advanced View Monitoring) system adds to increased safety for machine, operator and the complete job site.



▶ ISO-Certified safety

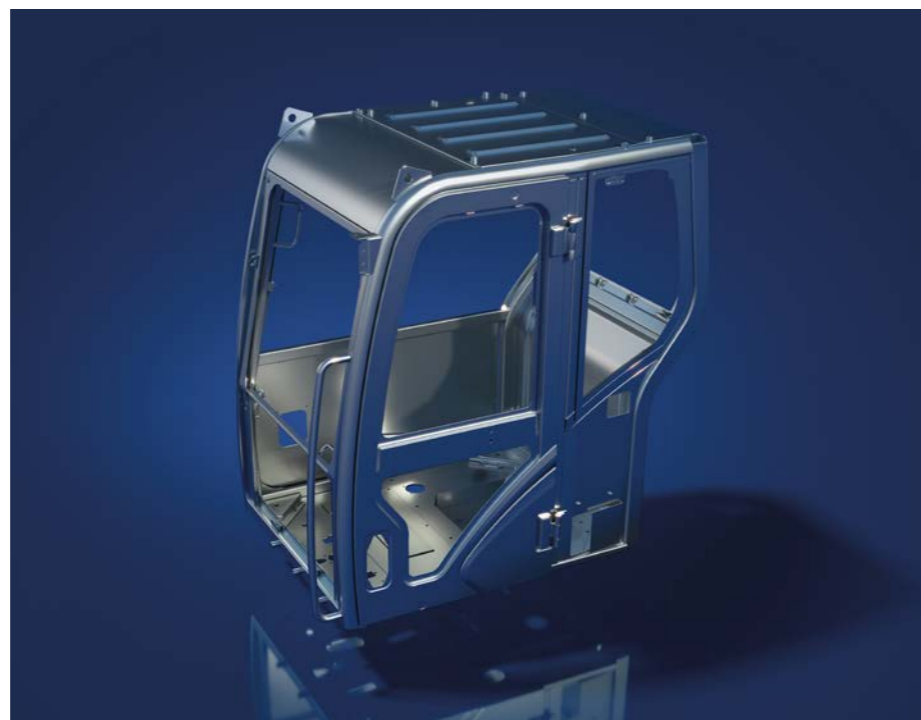
The state-of-the-art ROPS cab is pressurised and ISO-certified for your safety.

Seat belt warning alarm

If the seat belt is not buckled when the ignition key is turned, an alarm is sounded, along with a continuous visual alert.

More secure transport

4 additional lifting eyes on the undercarriage provide safer transportation.



Activate Auto Safety Check

The Auto Safety Lock prevents unintended operation due to the excavator not being controlled solely by the RCV lever.



MORE QUALITY & RELIABILITY

With quality components, essential parts protected from damage and a sturdy undercarriage, the HW100A has been designed to be tougher from the ground up.



Heavy-duty axles

The heavy-duty front axle with automatic or operator-controlled oscillation lock offers wide oscillating and steering angles while the transmission is mounted directly on the rear axle for greater protection and optimum ground clearance.

Less damage

Parts in contact with the ground have been carefully designed to prevent damage while stabiliser pads reduce ground pressure.

Designed for tough jobs

A rigid, welded frame provides excellent durability while efficient routing of hydraulic lines, transmission and rear differential protection make the undercarriage perfect for wheeled excavator applications. An oscillating axle lock is also available for digging and lifting operations.

More protection A

Large, reinforced covers protect the dozer and stabiliser cylinders, while the stabilisers are kept well within the machine envelope. The position of the pins is kept high, to avoid bumping while moving over the ground.

Strengthened boom and arm

Intensive testing combined with thicker material means that both reliability and component life are increased throughout the boom structure. To better protect the base of the arm, reinforced bars have been added while the arm centre and end boss have also been strengthened.



Equipped with its standard two-piece boom and a tiltrotator, the HW100A achieves a maximum of versatility and manoeuvrability.



MORE SERVICEABILITY & TELEMATICS

The HW100A is designed to offer simple daily inspections of all major parts and quick, easy maintenance. All filters and the battery are accessible from ground level through extra wide opening cowl doors.

Advanced filtration

A filter-type, high-performance water separator captures moisture in the fuel to reduce impurities, while pre-filters and dual main filters as standard also help minimise fuel system failures.



Advanced disk brake system

The new improved system allows a more efficient braking of the machine, eliminating the rocking effect associated with working on wheels.

Battery cut-off switch

This makes it easy to disconnect the battery during long-term storage.

Long life brakes

A dual multi-disc circuit with sintered metal discs provides extended service life.



Advanced pin and bushing technology

Highly lubricated metal is used for the boom pivot to increase the component's lifetime and lengthen greasing intervals. The bucket pivot has a tailored surface pattern and self-lubricating coating for optimised greasing and more efficient debris removal while ultra-hard, wear-resistant discs and bucket pivot polymer shims increase durability even more.

Durable hydraulic cylinders

High-strength steel piston rods and cylinder bodies are fitted including a shock-absorbing mechanism in all cylinders, for shock-free operation and extended piston life.

Less maintenance & costs

The HW100A does not have a diesel particulate filter (DPF) in the aftertreatment. Therefore, there is no need to replace the DPF periodically. Oil change intervals are extended, further reducing ownership and operating costs.

Hi MATE

It's convenient, easy and valuable. Hi MATE, Hyundai's remote management system, utilises GPS-satellite technology to provide customers with the highest level of service and product support available.

Increase productivity

By providing information such as service hours, idle time and fuel consumption, Hi MATE saves you money and improves productivity. Service alerts enable better maintenance planning.

Monitor your machines

Hi MATE's real-time location information allows convenient monitoring of your equipment via the Hi MATE website or mobile app.

Improve Security

Protect your equipment from theft or unauthorised usage. Hi MATE's geofencing alerts notify you automatically when a machine leaves a predetermined zone.



HCE-DT Air allows service technicians to connect to your equipment wirelessly via smartphone and laptop right on site.

ECD (Engine Connected Diagnostics)

ECD provides troubleshooting information as well as tailored servicing. Service technicians are supported with remote diagnostics allowing them to achieve quick resolution rate.

Mobile fleet app

Our Mobile Fleet app provides all the information you need to run your fleet efficiently and economically.

Keeping you covered

Hyundai Genuine Parts and accessories are designed to keep your machine running at optimum performance, with 24-hour delivery across our dealer network. Hyundai Standard and Extended Warranty Programmes provide peace of mind and give you full control over your operating costs.



TAKE THE TOUR

Productivity & Efficiency

- Powerful & efficient HD Hyundai Stage V engine
- Variable pressure Turbocharger
- 3 steering modes
- 3 power modes
- New driveline

Quality & Reliability

- Rigid, welded frame
- Heavy-duty axles
- Strengthened boom & arm
- Tough undercarriage

Comfort & Ease of Use

- Spacious, low noise cab
- Extra wide 8" touchscreen
- Proportional auxiliary flow
- Cab mounted suspension system
- Adjustable steering column

Serviceability

- Ground level servicing access
- Advanced disc brake & filter systems
- Low maintenance components
- Durable hydraulic cylinders
- Low maintenance DPF

Safety

- 360° visibility with advanced camera system
- Standard cab and boom lights with LED option
- State-of-the-art ROPS cab
- Seat belt warning alarm



SPECIFICATIONS

ENGINE	
Maker / Model	Hyundai D34
Type	4 cylinder, water cooled, 4-cycle, turbocharged charge air cooled, direct injection, electronic controlled diesel engine.
Gross Power	75 kW (100 hp) at 2,000 rpm
Max. Power	75 kW (100 hp) at 2,000 rpm
Peak Torque	430 N · m (317 lb · ft) at 1,400 rpm
Displacement	3.4 ℓ (208 cu in)

HYDRAULIC SYSTEM	
Advanced Load Sensing System	
MAIN PUMP	
Type	Variable Displacement Axial Piston
Max. flow	200 lpm @ 2,000 rpm
TRAVEL PUMP independent circuit	
Type	Variable Displacement Axial Piston
Max. flow	112 lpm @ 2,000 rpm
Aux pumps	Pilot/steer/brake
Type	Gear pumps

* Load Sensing: LUDV (load independent flow sharing)

HYDRAULIC MOTORS		
Travel	Bent-axis piston motor with 2 speed powershift	
Swing	Axial Piston Motor	
RELIEF VALVE SETTING		
Implement circuits	286 kgf/cm ² (4,070 psi)	
Travel	408 kgf/cm ² (5,803 psi)	
Swing circuit	255 kgf/cm ² (3,630 psi)	
Pilot circuit	29 kgf/cm ² (410 psi)	
Service valve	Installed	
HYDRAULIC CYLINDERS		
No. of cylinder bore × stroke	2-piece boom:	2-100 x 410 mm
	Arm:	1-100 x 846 mm
	Bucket:	1-85 x 690 mm
	Dozer blade:	2-100 x 179 mm
	Outriggers:	2-100 x 179 mm
	Adjustable boom:	1-115 x 775 mm
Boom swing:	1-110 x 684 mm	

DRIVES & BREAKS	
4-wheel hydrostatic drive. Constant mesh, helical gear transmission provides 2 forward and reverse travel speeds.	
Max. drawbar pull	4,200 kgf (9,259 lbf)

HYDRAULIC CYLINDERS	
1st: gear (low/high)	5.4 / 16.9 km/h (3.4 / 10.5 mph)
2nd: gear (low/high)	12.9 / 37.4 km/h (8.0 / 23.2 mph)
Gradeability	35° (70 %)

SERVICE BRAKE	
Independent dual brake, front and rear axle full hydraulic power brake. Spring released and hydraulic applied wet type multiple disc brake.	

PARKING BRAKE	
Spring-applied hydraulic released wet disc brake type in transmission.	

CONTROL	
Pilot pressure operated, proportional joysticks, steering wheel and foot pedals for effortless operation.	
Pilot control	Two joysticks with one safety lever (LH): Swing and arm (RH): Boom and bucket (ISO)
Engine throttle	Electric, Dial type
Lights	Two working lights on the boom, one working light on the cabin, plus rear and right side working lights

AXLE & WHEELS	
Full floating front axle is supported by center pin for oscillation. Oscillation lock (ram lock) function for safe operation. Rear axle is fixed on the lower chassis.	
Twin tyres (standard)	8.25-20-14PR
Single tyres (optional)	500/45-20

SWING SYSTEM	
Swing motor	Fixed displacement radial piston motor
Swing reduction	2-stage planetary gear reduction
Swing bearing	Grease-bathed
Swing brake	Multi-wet disc
Swing speed	10.5 rpm

COOLANT & LUBRICANT CAPACITY			
	liter	US gal	UK gal
Fuel tank	160	42.3	35.3
Engine coolant	16	4.2	3.5
Engine oil	12.6	3.3	2.8
Swing device - gear oil	1.5	0.4	0.3
Front axle	7.5	2.0	1.6
Rear axle (4-wheel steer)	8.1(6.8)	2.1(1.8)	1.8(1.5)
Transmission	1.6	0.4	0.4
Hydraulic system (including tank)	238	62.9	52.4
Hydraulic tank	140	37	30.8
DEF/AdBlue®	20	5.3	4.4

UNDERCARRIAGE	
Rigid, low-stress welded box-section frame, transmission and rear differential protection, heavy duty axles. Dozer blade and outriggers are easily exchangeable through bolt-on design.	
Dozer blade	Parallel-mounted dozer blade to support machine when working, also for levelling and backfilling.
Outrigger	Indicated for max. operation stability when digging and lifting. Can be mounted on front or rear.

OPERATING WEIGHT			
Machine with articulated boom (1890 mm 1st boom + 1880 mm 2nd boom), 2250 mm arm, 0.28m ³ bucket, 1350 kg counterweight, lubricant, coolant, full fuel tank, hydraulic tank, twin tyres and standard equipment.			
HYDRAULIC CYLINDERS			
Steering type	2-Wheel steering	4-Wheel steering	
Front grapple bar & rear blade	10,682 kg (23,550 lbf)	10,788 kg (23,780 lbf)	
Front blade & rear outrigger	11,073 kg (24,410 lbf)	11,179 kg (24,650 lbf)	
4 Outrigger	11,073 kg (24,410 lbf)	11,179 kg (24,650 lbf)	

SOUND LEVEL	
Exterior sound level (2000/14/EC - ISO6395:2008) LWA	98 dB (EU only)
Interior sound level (ISO 6396:2008) LPA	73 dB

AIR CONDITIONING SYSTEM	
The air conditioning system contains fluorinated greenhouse gas refrigerant R134a (Global Warming Potential = 1430). The system contains 0.58 kg of refrigerant representing a CO2 equivalent of 0.83 metric tonnes. For more information please refer to the manual.	

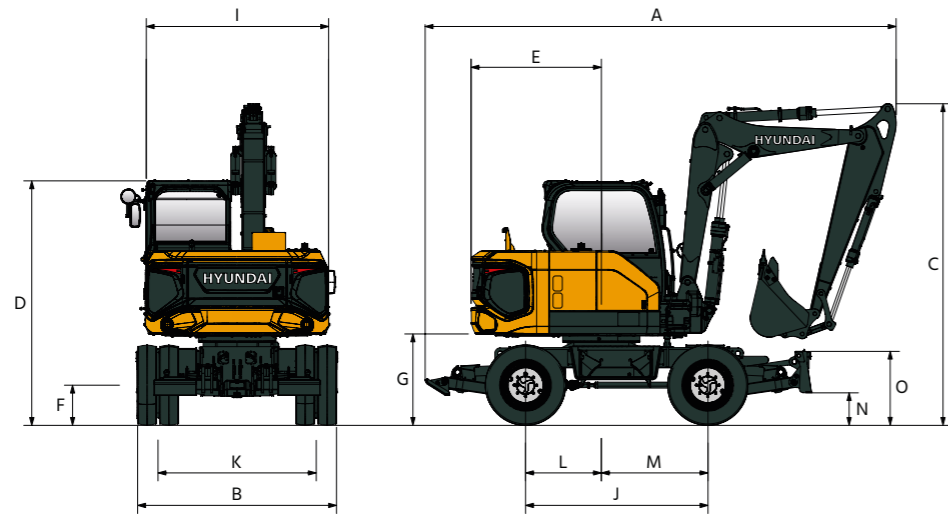
STEERING SYSTEM	
Hydraulically actuated, orbital type steering system actuates on front wheels through the steering cylinders.	
Min. turning radius	2 wheel steering : 5,740mm (18' 10") 4 wheel steering : 3,700mm (12' 2")

DIMENSIONS & WORKING RANGE

LIFTING CAPACITY

Rating over-front Rating over-side or 360 degree

HW100A WITH TWO-PIECE BOOM

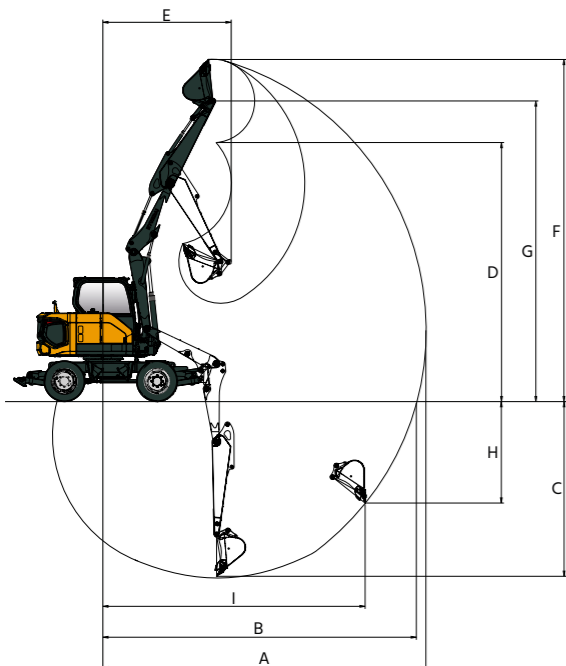


Unit : mm (ft.-in)

	Single tyres		Twin tyres			Single tyres		Twin tyres	
	Rear dozer	Rear outrigger	Rear dozer	Rear outrigger		Rear dozer	Rear outrigger	Rear dozer	Rear outrigger
A	Overall length (travel*)	5,809 (19' 1")	5,687 (18' 8")	I	Upper structure width	2,250 (7' 5")	2,250 (7' 5")		
A'	Overall length (transport**)	7,319 (24' 0")	7,281 (23' 11")	J	Wheel base	2,240 (7' 4")	2,240 (7' 4")		
B	Overall width	2,450 (8' 0")	2,450 (8' 0")	K	Tread width	1,987 (6' 6")	1,944 (6' 5")		
C	Overall height (travel*)	3,941 (12' 11")	3,952 (13' 0")	N	Dozer blade – max. lifting height	350 (1' 2")	350 (1' 2")		
D	Overall height (to top of cab)	3,000 (9' 10")	3,011 (9' 11")		Dozer blade – max. lowering depth	175 (0' 7")	175 (0' 7")		
E	Tail swing radius	1,600 (5' 3")	1,600 (5' 3")	O	Dozer blade – height	500 (1' 8")	500 (1' 8")		
F	Minimum ground clearance	317 (1' 0")	328 (1' 1")						
G	Ground clearance of counterweight	1,099 (3' 7")	1,110 (3' 8")						
L/M	Centre to wheel	932 / 1,308 (3' 1" / 4' 3")	932 / 1,308 (3' 1" / 4' 3")						

HW100A WORKING RANGE

Unit : mm (ft.-in)



Boom Length	1,890mm lower boom(6' 2") + 1,880mm upper boom(6' 2")	
Arm Length	2,250 (7' 5")	
Bucket capacity	0.28m ³	
A	Max. Digging Reach	7,820 (25' 8")
B	Max. digging reach (ground)	7,605 (24' 11")
C	Max. digging depth	4,245 (13' 11")
D	Max. dumping height	6,250 (20' 6")
E	Min. front swing radius	3,105 (10' 2")
F	Max. digging height	8,265 (27' 1")
G	Max. bucket pin height	7,255 (23' 10")
H	Max. vertical wall depth	3,670 (12' 0")
I	Max. radius vertical	4,800 (15' 9")
	Boom swing angle (Left/Right)	60° / 60°

HW100A WITH TWO-PIECE BOOM

1,890(14'5") + 1,880(15'1") 2-Piece boom, 2.25m(7'5") arm equipped with STD counter weight, front grapple rest and rear dozer up

Lift-point height (m/ft)	Lift-point radius								At max. reach		
	1.5 m (4.9 ft)		3.0 m (9.8 ft)		4.5 m (14.9 ft)		6.0 m (19.7 ft)		Capacity		Reach m (ft)
6.0m 19.7ft	kg				*2,010	*2,010			*1,880	1,750	4.91
	lb				*4,420	*4,420			*4,150	3,860	(16.13)
4.5m 14.8ft	kg				*1,920	*1,920	*1,750	1,260	*1,550	1,220	6.10
	lb				*4,230	*4,230	*3,850	2,780	*3,420	2,690	(20.02)
3.0m 9.8ft	kg				*2,240	1,970	*1,770	1,240	*1,470	1,030	6.67
	lb				*4,940	4,340	*3,910	2,740	*3,230	2,270	(21.88)
1.5m 4.9ft	kg				*2,640	1,800	*1,850	1,180	*1,510	980	6.80
	lb				*5,820	3,970	*4,080	2,610	*3,320	2,150	(22.32)
0.0m 0.0ft	kg			*3,110	3,030	*2,680	1,700	*1,760	1,140	1,020	6.54
	lb			*6,870	6,680	*5,920	3,740	*3,880	2,520	2,250	(21.45)
-1.5m -4.9ft	kg	*3,360	*3,360	*3,400	3,070	*2,150	1,690		*1,170	*1,170	5.81
	lb	*7,400	*7,400	*7,500	6,760	*4,740	3,720		*2,580	*2,580	(19.06)
-3.0m -9.8ft	kg								*700	*700	4.04
	lb								*1,550	*1,550	(13.26)

1,890(14'5") + 1,880(15'1") 2-Piece boom, 2.25m(7'5") arm equipped with STD counter weight, front grapple rest and rear dozer down

Lift-point height (m/ft)	Lift-point radius								At max. reach		
	1.5 m (4.9 ft)		3.0 m (9.8 ft)		4.5 m (14.9 ft)		6.0 m (19.7 ft)		Capacity		Reach m (ft)
6.0m 19.7ft	kg				*2,010	*2,010			*1,880	*1,880	4.91
	lb				*4,420	*4,420			*4,150	*4,150	(16.13)
4.5m 14.8ft	kg				*1,920	*1,920	*1,750	1,410	*1,550	1,360	6.10
	lb				*4,230	*4,230	*3,850	3,110	*3,420	3,000	(20.02)
3.0m 9.8ft	kg				*2,240	2,190	*1,770	1,390	*1,470	1,160	6.67
	lb				*4,940	4,830	*3,910	3,060	*3,230	2,560	(21.88)
1.5m 4.9ft	kg				*2,640	2,020	*1,850	1,330	*1,510	1,100	6.80
	lb				*5,820	4,450	*4,080	2,930	*3,320	2,430	(22.32)
0.0m 0.0ft	kg			*3,110	3,030	*2,680	1,920	*1,760	1,290	1,150	6.54
	lb			*6,870	6,680	*5,920	4,230	*3,880	2,840	2,540	(21.45)
1.5m 4.9ft	kg	*3,360	*3,360	*3,400	3,070	*2,150	1,910		*1,170	*1,170	5.81
	lb	*7,400	*7,400	*7,500	6,760	*4,740	4,210		*2,580	*2,580	(19.06)
-3.0m -9.8ft	kg								*700	*700	4.04
	lb								*1,550	*1,550	(13.26)

1,890(14'5") + 1,880(15'1") 2-Piece boom, 2.25m(7'5") arm equipped with STD counter weight, front dozer and rear outrigger up

Lift-point height (m/ft)	Lift-point radius								At max. reach		
	1.5 m (4.9 ft)		3.0 m (9.8 ft)		4.5 m (14.9 ft)		6.0 m (19.7 ft)		Capacity		Reach m (ft)
6.0m 19.7ft	kg				*2,010	*2,010			*1,880	1,820	4.91
	lb				*4,420	*4,420			*4,150	4,020	(16.13)
4.5m 14.8ft	kg				*1,920	*1,920	*1,750	1,320	*1,550	1,270	6.10
	lb				*4,230	*4,230	*3,850	2,910	*3,420	2,810	(20.02)
3.0m 9.8ft	kg				*2,240	2,050	*1,770	1,300	*1,470	1,080	6.67
	lb				*4,940	4,510	*3,910	2,870	*3,230	2,260	(21.88)
1.5m 4.9ft	kg				*2,640	1,880	*1,720	1,240	*1,420	1,020	6.80
	lb				*5,820	4,150	*3,800	2,740	*3,140	2,370	(22.32)
0.0m 0.0ft	kg			*3,110	*3,110	2,540	1,780	1,680	1,200	1,070	6.54
	lb			*6,870	*6,870	5,610	3,920	3,710	2,650	2,370	(21.45)
1.5m 4.9ft	kg	*3,360	*3,360	*3,400	3,210	*2,150	1,770		*1,170	*1,170	5.81
	lb	*7,400	*7,400	*7,500	7,070	*4,740	3,900		*2,580	*2,580	(19.06)
-3.0m -9.8ft	kg								*700	*700	4.04
	lb								*1,550	*1,550	(13.26)

1. Lifting capacities are based on ISO 10567.

2. Lifting capacity of the HX A-series does not exceed 75% of tipping load with the machine on firm, level ground or 87% of full hydraulic capacity.

3. The Lift-point is bucket pivot mounting pin on the arm (without bucket mass).

4. (*) indicates load limited by hydraulic capacity.

5. Caution: please be aware of the local regulations and instructions for lifting operations.

LIFTING CAPACITY

Rating over-front Rating over-side or 360 degree

HW 100A WITH TWO-PIECE BOOM

1,890(14'5") + 1,880(15'1") 2-Piece boom, 2.25m(7'5") arm equipped with STD counter weight, front dozer and rear outrigger down

Lift-point height (m/ft)	Lift-point radius								At max. reach		Reach m (ft)	
	1.5 m (4.9 ft)		3.0 m (9.8 ft)		4.5 m (14.9 ft)		6.0 m (19.7 ft)		Capacity	m (ft)		
6.0m 19.7ft	kg lb					*2,010 4,420	*2,010 4,420			*1,880 *4,150	*1,880 *4,150	4.91 (16.13)
4.5m 14.8ft	kg lb					*1,920 *4,230	*1,920 *4,230	*1,750 *3,850	1,540 3,400	*1,550 *3,420	1,490 3,290	6.10 (20.02)
3.0m 9.8ft	kg lb					*2,240 *4,940	*2,240 *4,940	*1,770 *3,910	1,520 3,350	*1,470 *3,230	1,270 2,800	6.67 (21.88)
1.5m 4.9ft	kg lb					*2,640 *5,820	2,220 4,890	*1,850 *4,080	1,460 3,220	*1,510 *3,320	1,210 2,670	6.80 (22.32)
0.0m 0.0ft	kg lb			*3,110 *6,870	*3,110 *6,870	*2,680 *5,920	2,110 4,660	*1,760 *3,880	1,420 3,130	*1,410 *3,110	1,270 2,790	6.54 (21.45)
-1.5m -4.9ft	kg lb	*3,360 *7,400	*3,360 *7,400	*3,400 *7,500	*3,400 *7,500	*2,150 *4,740	2,100 4,640			*1,170 *2,580	*1,170 *2,580	5.81 (19.06)
-3.0m -9.8ft	kg lb									*700 *1,550	*700 *1,550	4.04 (13.26)

1,890(14'5") + 1,880(15'1") 2-Piece boom, 2.25m(7'5") arm equipped with STD counter weight, front outrigger and rear outrigger up

Lift-point height (m/ft)	Lift-point radius								At max. reach		Reach m (ft)	
	1.5 m (4.9 ft)		3.0 m (9.8 ft)		4.5 m (14.9 ft)		6.0 m (19.7 ft)		Capacity	m (ft)		
6.0m 19.7ft	kg lb					*2,010 *4,420	*2,010 *4,420			*1,880 *4,150	1,790 3,950	4.91 (16.13)
4.5m 14.8ft	kg lb					*1,920 *4,230	*1,920 *4,230	*1,750 *3,850	1,290 2,850	*1,550 *3,420	1,250 2,750	6.10 (20.02)
3.0m 9.8ft	kg lb					*2,240 *4,940	2,010 4,430	*1,770 *3,910	1,270 2,810	*1,470 *3,230	1,060 2,330	6.67 (21.88)
1.5m 4.9ft	kg lb					*2,640 *5,820	1,850 4,070	1,760 3,870	1,220 2,680	1,450 3,200	1,000 2,210	6.80 (22.32)
0.0m 0.0ft	kg lb			*3,110 *6,870	3,110 *6,870	2,590 5,710	1,740 3,840	1,710 3,770	1,180 2,590	*1,410 *3,110	1,050 2,310	6.54 (21.45)
-1.5m -4.9ft	kg lb	*3,360 *7,400	*3,360 *7,400	*3,400 *7,500	3,140 6,930	*2,150 *4,740	1,730 3,820			*1,170 *2,580	*1,170 *2,580	5.81 (19.06)
-3.0m -9.8ft	kg lb									*700 *1,550	*700 *1,550	4.04 (13.26)

- Lifting capacities are based on ISO 10567.
- Lifting capacity of the HX A-series does not exceed 75% of tipping load with the machine on firm, level ground or 87% of full hydraulic capacity.
- The Lift-point is bucket pivot mounting pin on the arm (without bucket mass).
- (*) indicates load limited by hydraulic capacity.
- Caution: please be aware of the local regulations and instructions for lifting operations.

DIGGING FORCE

HW 100A DIGGING FORCE

Boom	Length	mm (ft.in)	1,890(14'5") + 1,880(15'1") 2-Piece
Arm	Length	mm (ft.in)	2,250 (7' 5")
Bucket digging force	SAE	kN	51.6
		kgf	5,262
		lbf	11,601
	ISO	kN	58.6
		kgf	5,976
		lbf	13,175
Arm crowd force	SAE	kN	35.6
		kgf	3,630
		lbf	8,003
	ISO	kN	36.5
		kgf	3,722
		lbf	8,206

STANDARD/OPTIONAL EQUIPMENT

● : Standard ○ : Optional

ENGINE	STD/OPT
HYUNDAI D34 Engine	●
ENGINE	STD/OPT
Advanced Load Sensing (LUDV)	
Power mode (P, S, E), Work mode (P, W, T)	●
Attachment Flow Control	●
Engine Auto Idle	●
Engine Auto Shutdown	●
20 km/h max. speed	○
37.4 km/h max. speed	●
CABIN & INaTERIOR	STD/OPT
ISO Standard cabin	
Parallel type windshield wiper	●
Remote radio On/Off switch	●
DAB radio with Bluetooth and handsfree call system	●
Electric horn	●
All-weather steel cab with 360° visibility	●
Safety glass windows	●
Sliding fold-in front window	●
Sliding side window (LH)	●
Lockable door	●
Hot & cool box	●
Storage compartment	●
Transparent cabin roof-cover	●
Sun visor	●
Door and cab locks, one key	●
Pilot-operated slidable joystick	●
Console box height adjust system	●
Automatic climate control	
Air conditioner & heater	●
Defroster	●
Starting Aid (air grid heater) for cold weather	●
Centralised monitoring	●
8" LCD display	●
Engine coolant temperature gauge	●
Max power	●
Auto idle	●
Overload warning with alarm	●
Check Engine	●
Fuel level gauge	●
Hyd. oil temperature gauge	●
Warnings	
Communication error indication	●
Low battery	●
Clock	●
Cabin lights – LED	●
Warnings	
Adjustable air suspension seat with heater	●
Cabin ROPS (ISO 12117-2)	
ROPS (Roll Over Protective Structure)	●
FOPS (Falling Object Protective Structure)	●
FOG (Falling Object Guard) Front & Top Guard	○

SAFETY	STD/OPT
Battery master switch	●
Rear & Mirror view camera	●
AVM (Around View Monitoring)	○
Two working lights on Boom – LED	●
Travel alarm	●
Rear work lamp	●
Beacon lamp	○
Automatic swing brake	●
Safety lock valve for boom & arm cylinder	●
Overload warning device	●
Safety lock valve on bucket cylinder	○
ATTACHMENT	STD/OPT
Boom	
2-Piece boom (1890mm + 1880mm)	●
Arm	
2250mm	●
OTHER	STD/OPT
Fuel pre-filter	●
Self-diagnostics system	●
Hi MATE (Remote Management System)	○
Alternator (12V, 140 A)	●
Batteries (12V, 150 Ah)	●
Fuel filler pump	○
Bucket-Clamshell adaptation (3-way valve)	○
Single-acting piping kit (breaker, etc.)	○
Double-acting piping kit (clamshell, etc.)	○
Rotating Piping Kit	○
Quick coupler piping	○
Tool kit	●
Cruise control	●
Pattern change valve	○
Undercarriage	STD/OPT
Front grapple rest and rear blade	●
Front blade and rear outrigger	○
Front and rear outrigger	○
2-Wheel steering	●
4-Wheel steering	○
Twin tyres 8.25-20 14PR	●
Single wide tyres 500/45-20	○
Wheel Chock	●
Front and rear mudguards	○

- * Standard and optional equipment may vary. Contact your Hyundai dealer for more information. The machine may vary according to International standards.
 * The photos may include attachments and optional equipment that are not available in your area.
 * Materials and specifications are subject to change without advance notice.