

HT38 v

Compact Track Loader



* Photo may include optional equipment.



Head Office(Sales Office)
14F, GLOBAL R&D CENTER, 477 BUNDANG SUSEO-RO, BUNDANG-GU, SEONGNAM-SI, GYEONGGI-DO, 13553, KOREA

PLEASE CONTACT

Engine Gross Power
115.3 HP (86 kW) / 2,400 rpm

Rated operating capacity (35% of tipping load)
1,727 kg (3,806 lb)

Operating Weight
5,799 kg (12,785 lb)

WHAT'S NEW AND BEST

HT38V

THE BEST PRODUCTIVITY

- Top-of-the-line horsepower
- Impressive lift height
- Larger lifting capacity
- Superior dump reach
- Lift arm float
- Torsion suspension

EASY CONTROL AND COMFORTABLE OPERATION

- Spacious, cleaner and quieter cab
- Joystick and thumbwheel controls
- 8-inch Smart Touch display
- Auto self-leveling (up and down)
- Adjustable heated air-suspension seat

SUPERIOR VISIBILITY

- Rearview mirror
- Rearview camera
- Optional 270° around view monitor (AVM) camera system with ultrasonic sensors
- Large glass with minimized A-pillar width (corner pillar by the door)

SERVICEABILITY AND TELEMATICS

- One-piece tilt-up cabin
- Hi MATE telematics
- Swing-open tailgate
- Reversible fan

RELIABILITY AND VERSATILITY

- Higher maximum travel speed
- Hydraulic quick coupler (universal)
- Return to dig, attachment positioner
- Ride control
- High-flow hydraulics
- 14 pin Elec. Connector
- Bucket shake



THE BEST PRODUCTIVITY

The HT38V meets the toughest performance standards, delivering outstanding power, efficiency, and maneuverability for any job.



Superior Horsepower

One of the most powerful machines in its class, the HT38V gives you more lifting capacity and pushing power. The HYUNDAI engine, which is also found in our dozers, is crucial for minimizing downtime, reducing maintenance costs and ensuring consistent performance in demanding work conditions.

Two-Speed Travel

The two-speed travel feature allows the compact track loader to operate at the higher speed for traveling longer distances or quickly moving between job sites, and the lower speed for stabilizing the machine during more precise and controlled movements in challenging conditions.

Creep Control

With its slow, intentional movements, creep control enhances the compact track loader's maneuverability and precision, affording you better control while operating at high rpms. The feature can be easily activated from the left-hand joystick.



Ride Control

Ride control reduces shocks and vibrations, enhancing stability for the bucket and minimizing spillage when the compact track loader navigates rough terrain while carrying full loads.

Additional Counterweight

An optional 300-lb. additional counterweight further improves the machine's lifting and hauling capacity while providing better traction on challenging surfaces.



*Photo may include optional equipment.

Hydraulics Power Your Productivity



Continuous Hydraulic Flow

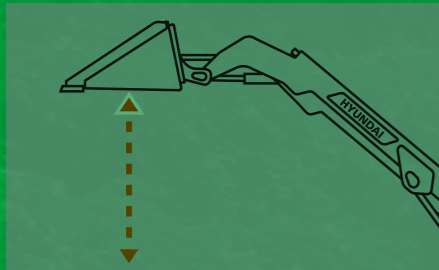
This feature provides a constant supply of hydraulic power to attachments, which contributes to a smoother operation that reduces jerky movements.

Auxiliary High-Flow Piping

The auxiliary high-flow piping feature allows a higher volume of hydraulic fluid to pass through the system, providing more power and efficiency in hydraulic attachments.

Electric HST Electrohydraulic Controls

Electric over hydraulic controls provide better maneuverability and responsiveness by offering smoother, more precise control over the machine's movements, especially when grading or hauling.



Vertical Lift Arm

The HT38V offers impressive lift and dumping capabilities, especially when compared to machines with radial lift arms. Its vertical lift configuration allows the compact track loader to extend its forward reach, making it easier to deposit materials into high-sided trucks or other elevated locations.

Bucket Shake

The bucket shake feature helps remove materials stuck to the bucket or attachment, saving you time spent manually cleaning the machine.

Lift Arm Float

The lift arm float feature enables attachments to naturally "float" with the terrain, automatically accounting for raised ground.

Hydraulic Quick Coupler

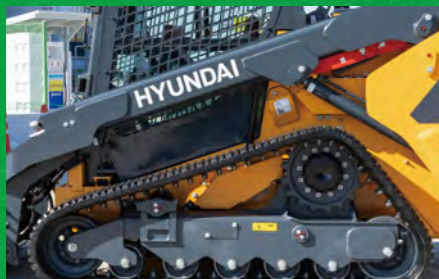
The universal hydraulic quick coupler enables fast and tool-free attachment changes to save you time and energy, especially when switching between multiple attachments on one job site.

Auto Self-Leveling (Up and Down)

Ideal for pallet applications, self-leveling helps maintain safety and stability by automatically adjusting the attachment or bucket to remain level as the arms are raised or lowered.

Auto Return to Dig and Attachment Positioner

The auto return-to-dig feature automatically returns the arms to the lowered position, saving you time while delivering a more consistent digging depth. The attachment positioner allows the operator to save the angle of the attachment and can automatically return the attachment to the preset angle with the push of a button.



Torsion Suspension

The standard torsion suspension system helps absorb shocks and vibrations over rough terrain, resulting in a smoother ride compared to traditional fixed-frame machines.

POWERFUL VERSATILITY

The true strength of the HT38V shines in demanding job sites. Its standard hydraulic quick-coupler-ready design and upgraded auxiliary hydraulics ensure fast, effortless attachment changes, keeping you productive - even in tight spaces.



*Photo may include optional equipment.

RELIABILITY

We designed our first compact track loader with your productivity in mind, ensuring efficiency and ease of use in every corner of your job site.



*Photo may include optional equipment.

The flange idlers are designed to guide and align the tracks, ensuring that they remain properly positioned on the undercarriage. You can select from two options based on your application.



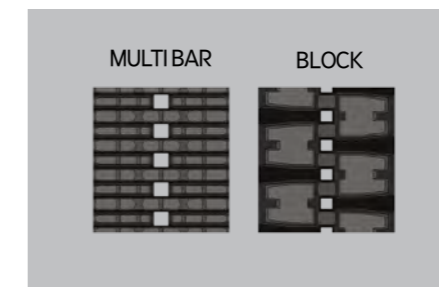
Flange Idlers

Front triple and rear triple flange idler (Option) are ideal for forestry use or along hillsides when mulching or mowing by distributing the load more evenly across the tracks. This helps to increase stability on slopes and rough or uneven terrain. Front dual and rear single flange idlers (standard) are designed for the flat and mild terrain of developed construction sites.



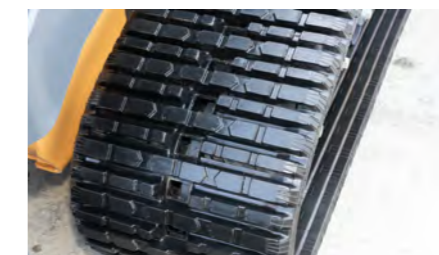
High-Flow Hydraulics

The high-flow hydraulics provide an even stronger supply of power to hydraulic attachments for steadier, smoother operation.



Two Track Options

Two track patterns, each available in a wide or narrow option, give you the proper traction for your job site's terrain.



MULTI BAR

The standard wide multi bar tracks offer increased contact with the surface, providing more driving efficiency and superior traction.



Block

The optional block pattern is designed for increased durability on challenging terrains like rock, gravel or uneven ground.

OPERATOR COMFORT

Comfort and control are key to performance and safety on the job site. With an ergonomic cab, intuitive joystick controls, an air-suspension seat, and a roof panel, the HT38V keeps operators productive and at ease.



*Photo may include optional equipment.



Rearview Camera

The rearview (backup) camera provides an additional view so you can easily see behind the machine.



Around View Monitor (AVM) Camera System With Ultrasonic Sensors

The optional around view monitor (AVM) camera system with ultrasonic sensors displays a 270° view of the machine's surroundings for greater confidence when operating the machine in tight work areas. Ultrasonic sensors further enhance safety by alerting you of nearby objects as you back up the machine.



Visibility Roof Panel

The visibility roof panel gives you a clear view of what's overhead, increasing visibility when working with elevated loads or in situations where a clear line of sight is crucial.

Adjustable Rearview Mirror

The adjustable rearview mirror helps you easily see behind the machine for improved safety and performance.



A Spacious, Comfortable Cab

With its large frame, the three-foot-wide interior of the HT38V compact track loader puts you in comfortable command of the job. It starts as soon as you enter through the large polycarbonate swing-out door. The large glass with narrower A-pillar width helps you clearly see the terrain. The pressurized cab reduces dust and lowers noise levels.

An 8-inch Smart Touch display offers an intuitive interface. Joystick and thumb wheel sensitivity give you precise control in tight spaces. The heat and AC system, cup holder, 12-volt charging, and radio and Bluetooth® wireless technology give you a comfortable working environment year-round.

Adjustable Heated Air-Suspension Seat

This feature offers superior comfort compared to traditional seats. The air-suspension system helps absorb shocks and vibrations, reducing the impact of bumps and rough terrain. Air-filled cushions adjust to your weight and movements, providing a smoother and more comfortable ride, especially over uneven terrain.



LED Work Lamps – 4 Standard (2 Front, 2 Rear)

LED work lamps improve visibility during low-light or nighttime operations. Crucial for maintaining a safe and productive work environment, the LED front and rear work lamps reduce your risk of accidents and improve overall job site safety.

Travel Alarm

The standard travel alarm alerts others on the job site when the compact track loader is working, for added awareness and safety.

Master ON/OFF Switch

The master ON/OFF switch offers one-touch control in the event that you need to quickly power the machine off.

SERVICEABILITY AND TELEMATICS

IoT, ICT, AI-based digital technologies is creating smart construction sites. Maximizes connectivity, productivity, and safety for your successful businesses.



Hi MATE

IT'S CONVENIENT, EASY AND VALUABLE

Hi MATE Hyundai's newly developed remote management system, utilizes GPS-satellite technology to provide customers with the highest level of service and product support available. Hi MATE enables users to remotely evaluate machine performance, access diagnostic information, and verify machine locations at the touch of a button.

WHAT IS BENEFITS



Increase Productivity

It helps you operate machines in efficient. You can check the difference between total engine hours and actual working hours. See how productive your machines are and plan any required cost saving solutions. Hi MATE offers working information such as working / idling hours, fuel consumption and rate.



Convenient and Easy Monitoring

There is nothing much to do to monitor your machines. Just log on to the Hi MATE website or mobile application. Hi MATE allows you to watch your machines whenever and wherever you are.



Security

Protect your machines from theft or unauthorized usage with Hi MATE. If the machine moves out of the Geo-fence boundary, you will get alerts.

Attachments

- Angle Broom > Skeleton Grapple >
- Open-Front Rotary Brush Cutter > Auger >
- Large-Capacity Root Grapple > Closed-Front >
- Power Rake > Low-Profile Dirt Bucket >
- SNOW BLOWER > Hi-Vis Rail Pallet Fork >
- Utility Bucket > Snow / Light Material Bucket >
- Scrap Grapple > Multi-Purpose Bucket >
- Snow Pusher

Serviciability



Reversible Fan

The optional reversible fan protects against dust and debris. This keeps the compact track loader's engine cleaner and cooler to help extend the life of your machine.

Radiator Screen

The radiator screen prevents debris, such as dirt, leaves or larger particles, from entering the radiator to reduce the risk of the engine overheating.

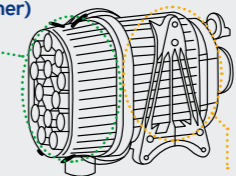
Tilt-up Cooling Module

The tilt-up cooling module enables easier cleaning of the cooling system to maximize airflow.

110 V Plug Heater

The optional 110V plug heater warms the engine block and fluids for easier starts in extremely cold temperatures.

Cyclone Assy (Pre Cleaner)



Housing Assy

Double Element Air filter

Equipped with a double-element air filter, the air cleaner efficiently removes dust and contaminants such as fibers, prevents face plugging, and ensures an extended operational lifetime in the field.



One-Piece Cab

The one-piece cab design minimizes the number of joints and seams, resulting in a more robust and durable cab that can withstand heavy-duty work environments.

SPECIFICATIONS

ENGINE	
Maker	HYUNDAI
Model	D34
Emission Certification	EPA Tier 4 final
Number of cylinders	4
Rated power, gross (hp per SAE J1995)	115.3 hp (86 kW) @ 2,400 rpm
Rated power, net (hp per SAE J1349)	102.6 hp (76.5 kW) @ 2,400 rpm
Maximum torque, gross (SAE J1995)	339.2 lbf·ft. (46.9 kfg·m) @ 1,400 rpm
Displacement	208 in. ³ (3.4 L)
Bore and stroke	3.86 in. x 4.45 in. (98 mm x 113 mm)
Starter	12 V, 4.5 hp (3.3 kW)
Battery	12 V, 150 AH
Asperation	Turbocharged
Alternator	12 V, 140 amp
Air cleaner	Powercore
Aftertreatment	DOC, SCR (no DPF)

OPERATING SPECATION	
Operating Weight	127,851lb(5799kg)
Breakout force (Bucket)	6,649.11bf(3016kgf)
Breakout force (Lift arm)	6,761.61bf(3067kgf)
Traction force	45.6/27.0kN
Lift Arm Path	Vertical
RATED OPERATING CAPACITY	
50% Tipping Load	3,806lb(1727kg)
Tipping Load	10,875.4lb(4933kg)

CABIN	
ROPS	ISO1347:2008
FOPS	ISO3449:2005, Level 1

UNDERCARRIAGE	
Track width	15.7"(400mm)/17.7"(450mm)
Ground pressure	5.7psi(0.39bar) / 5.1psi(0.35 bar)
No. of track roller (per side)	5
Travel Speed(2-Speed) Low	6.1mph(9.8km/h)
Travel Speed(2-Speed) High	9.2mph(14.8km/h)
Track Tension Type	Grease
Front idler	Double(Std.) / Triple(Opt.)
Rear idler	Single(Std.) / Triple(Opt.)

HYDRAULIC SYSTEM	
HYDRAULIC FLOW - BASIC	
Hydraulic Pressure	3,336psi(23,000kPa)
Hydraulic Flow	22.7gpm(86L/min)
HYDRAULIC FLOW - HIGH FLOW	
Hydraulic Pressure	4,061psi(28,000kPa)
Hydraulic Flow	40gpm(151.2L/min)

CAPACITY	
Fuel tank	29.0 gal (110 L)
DEF tank	4.0 gal (15 L)
Cooling system (radiator capacity)	3.7 gal (14 L)
Engine oil	3.9 gal (14.6 L)
Hydraulic tank	10.6 gal (40 L)
Hydraulic system	19.2 gal (72.7 L)

SOUND	
Inside Cab (ISO 6396:2008)	75dB(A)
Outside Cab (EU Directive 2000/14/EC)	101dB(A)

EQUIPMENT

STANDARD EQUIPMENT

- Enclosed Cab (ROPS/FOPS)
- Polycarbonate Front Door
- Rearview Mirror
- Air Conditioner and Heater
- High visibility 2" Retractable Seat Belt
- Heated Air Suspension Seat
- 12V Electric Outlet / USB Outlet / Cup Holder
- 8" touch screen monitor integrated Bluetooth & Radio
- Rearview Camera
- Accelerator / decelerator foot throttle
- Interior Cab Light / Courtesy Light
- Horn / Backup Alarm
- Working Lamp (Front 2 / Rear 2)
- Telematics (Hi MATE)
- Hydraulic Quick Coupler
- Pattern Change (ISO,H)
- 14-pin Coupler for Attachments
- Boom Float Function
- Ride Control
- Creep Control
- Torsion Suspension system
- Two-speed Travel
- Multi-bar Pattern Wide Track 17.7" (450mm)
- Front Dual Rear Single flange Idler
- Smart Assist Features
 - Auto self-leveling (Up and Down)
 - Bucket shake
 - Attachment Positioner
 - Auto Return to dig
 - Lift Arm End-damping

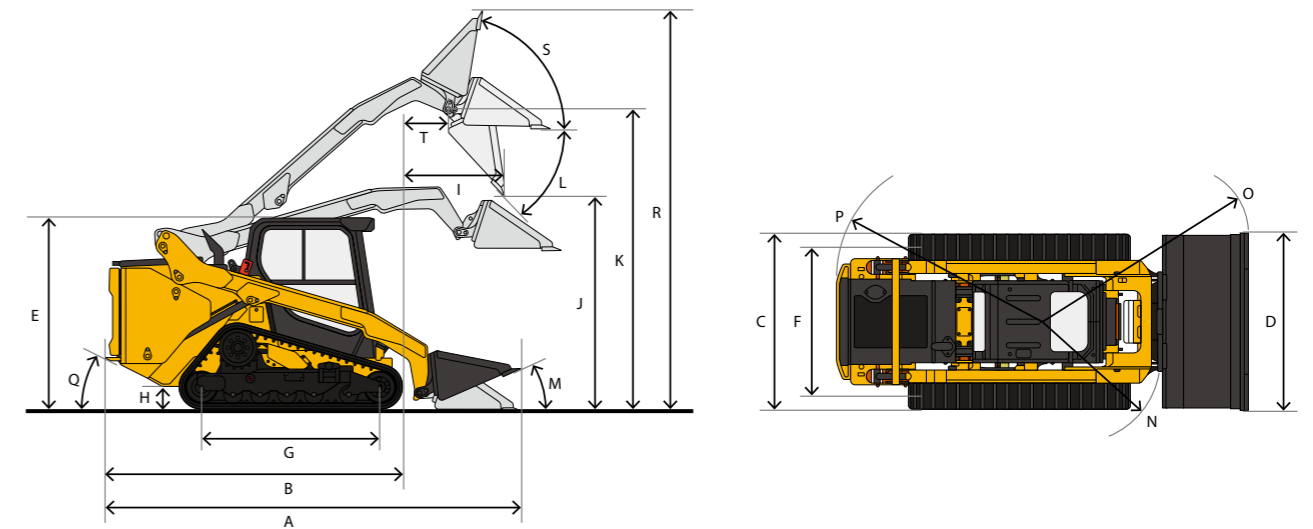
OPTIONAL EQUIPMENT

- Around view Camera with ultrasonic sensor
- 300lb. Additional Counterweight
- Beacon Lamp
- Reversible Fan
- Plug heater (110V)
- Triple flange Idler
- ...and much more

NOTE: Where applicable, dimensions are in accordance with Society of Automotive Engineers (SAE) and ISO standards. Specifications and design are subject to change without notice. Pictures of DEVELON compact track loaders may show other than standard equipment. All dimensions are shown in inches. Respective metric dimensions are enclosed by parentheses. Rounding may impact specifications. DEVELON equipment is manufactured with a Quality Management System that is in compliance with ISO 9001:2008. All dimensions are given for DEVELON compact track loaders equipped with 15.7-inch (400mm) block rubber tracks.

DIMENSIONS & SPECIFICATIONS

DIMENSIONS



Unit : mm (ft · in)

DIMENSIONS		HT38V	
A	Length w/bucket on ground	165.7" (4,210 mm)	
B	Length w/o bucket	132.8" (3,372 mm)	
C	Vehicle width	400mm shoe	76.8" (1,951 mm)
		450mm shoe	78.8" (2,001 mm)
D	Width with bucket	80" (2,032 mm)	
E	Height to top of cab	84.0" (2,133 mm)	
F	Track tread	61.1" (1,551 mm)	
G	Length of track on ground	70.0" (1,767 mm)	
H	Ground clearance	9.7" (247 mm)	
I	Reach at max. lift and dump	46.3" (1,175 mm)	
J	Height at max. lift and dump	96.7" (2,457 mm)	
K	Hinge pin height at max. lift	129.1" (3,280 mm)	
L	Max. dump angle	40.8°	
M	Rollback angle on ground	25°	
N	Turning radius from Center - Coupler	62.3" (1,583 mm)	
O	Turning radius from Center - Bucket	99.9" (2,537 mm)	
P	Turning radius from Center - Machine Rear	75.7" (1,922 mm)	
Q	Rear departure angle	31.6°	
R	Max. Overall Height	169.4" (4,304 mm)	
S	Rack Back Angle at max height	85.9°	
T	Bucket Pin Reach at Maximum Lift	20.1" (510 mm)	