

HL960A

With EU Stage V Engine installed

*Photo may include optional equipment.



Head Office(Sales Office)
14F, GLOBAL R&D CENTER, 477 BUNDANG SUSEO-RO, BUNDANG-GU, SEONGNAM-SI, GYEONGGI-DO, 13553, KOREA

PLEASE CONTACT

Gross Power
225 HP(168 kW) at 2,200 rpm

Net Power
222 HP(166 kW) at 2,200 rpm

Bucket Capacity
3.2 ~ 3.3 m³

Operating Weight
19,200 kg / 42,330 lb

WHAT'S NEWEST AND BEST

HL960A

THE BEST PRODUCTIVITY AND FUEL EFFICIENCY

- EU STAGE V Engine **NEW**
- Eco Report **NEW**
- Smart Power Mode **NEW**
- Hydraulic Differential Lock **Option**
- 5 Speed Lock Up Clutch **Option**
- ICCO (Intelligent Clutch Cut Off)
- Automatic Engine Shut Down
- Optimized Power Matching

ULTIMATE DURABILITY

- Unified Control Valve **NEW**
- Enhanced Rear Axle Capacity **NEW**
- Axle Oil Cooling System **Option**
- Thermostat for Transmission Cooling **Option**
- Solid Tire **Option**
- Optimized Drive Shaft
- High Quality Hydraulic Hose

EASY CONTROL AND COMFORTABLE OPERATION

- Foldable Side Mirror **NEW**
- Fully Adjustable Seat and Armrest **NEW**
- Air Compressor **NEW** **Option**
- Remote Door Control **NEW** **Option**
- Auto Greasing System **Option**
- Ride Control **Option**
- Full Sound-Proofed Spacious Cabin
- Wide Touch Screen Monitor
- Centralized Cluster
- Soft end Stop
- Weighing System

THE ULTIMATE SAFE ENVIRONMENT

- Emergency Stop **NEW**
- Seat Belt Warning Alarm **NEW**
- Radar **NEW** **Option**
- AVM (Around View Monitoring) **Option**
- IMOD (Intelligent Moving Object Detection) **Option**

SERVICEABILITY AND TELEMATICS

- ECD(Engine Connected Diagnostics) **NEW**
- Fully Openable Engine Hood **NEW**
- Hi-MATE **Option**
- Easy Filter Replacement
- Wide Core & Fin Radiator
- Longer Lasting Filter





THE BEST PRODUCTIVITY AND FUEL EFFICIENCY

The new HYUNDAI HL960A with new engine technologies is satisfying the most strict environmental emission regulation in the world and A series in wheel loader have a number of new features that contribute to overall fuel and also production efficiency



Eco Report **NEW**

Eco report shows the wheel loader's inefficient operation status in order to improve operator's improper working habit.



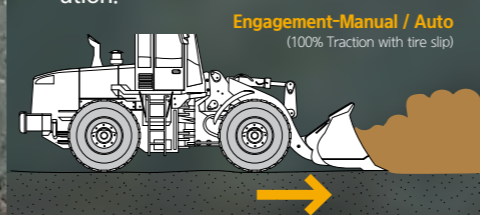
5 Speed Lock Up Clutch **Option**

By using of 5 Speed & lock up clutch, now operator can enjoy both the reduction of Fuel consumption and various of use in gears depends on the working condition.



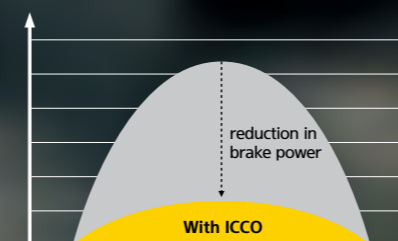
Hydraulic Differential Lock **Option**

Hydraulic differential lock has the advantages of both improving productivity and less fuel consumption by preventing tire slip during the operation.

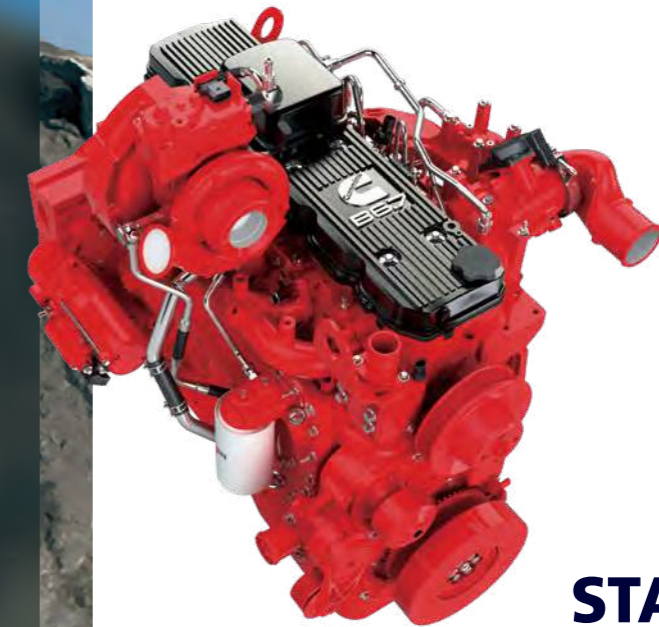


ICCO (Intelligent Clutch Cut Off)

By selecting of 'H-Mode' among clutch cut-off selections, ICCO will be engaged for both less power loss in torque converter and lower heat generation on brake sides.

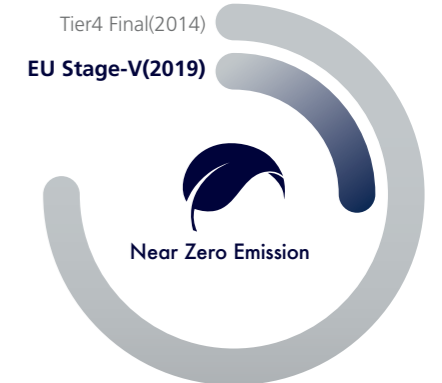


* Photo may include optional equipment.



EU STAGE V Engine **NEW**

'Cummins B6.7' engine meeting Euro Stage V emission regulations is designed for maximum productivity and fuel efficiency.



Smart Power Mode **NEW**

Smart Power mode reduces fuel consumption by adjusting the engine speed in heavy load work like digging. The key point of this function is not only saving fuel with same performance as Power mode but also making good balance between traction force and breakout force.



Automatic Engine Shut Down

Adjustable 'Automatic engine shut down' significantly reduces idle time, overall operating hours and fuel consumption.



Optimized Power Matching

For maximum operational efficiency, the engine is designed to achieve high torque in the low RPM range. Change an engine rpm at peak torque to lower rpm section also.



ULTIMATE DURABILITY

The true value of the HL960A, which is now far more powerful, is revealed in tough working environments. With the high-strength design structure and enduring system proven by rigorous road tests at various work sites, Hyundai wheel loaders can perform any high-load work to maximize productivity.

Unified Control Valve

NEW

HL960A improved hydraulic system. Unified control valve system removes the hydraulic hose connected with each valve and has fewer leak points. Because MCV is integrated with ride control valve and EPPR valve.

Enhanced Rear Axle Capacity

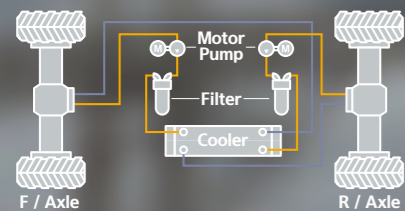
NEW

HL960A applied larger capacity axle than the previous series. It offers more reliable performance and longer durability.

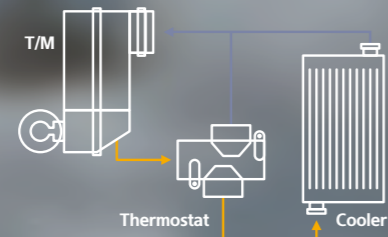


Axle Oil Cooling System **Option**

Axle oil cooling system prevents overheating of axle oil caused by frequent braking and high-load work.



Thermostat for Transmission Cooling **Option**



Solid Tire **Option**

HCE is pleased to announce the Trelleborg Brawler SoftRide press-on solid tire have been approved for use on Medium Wheel Loaders for the EU market.



Optimized Drive Shaft

Through thorough verification, the optimized drive shaft makes the HL960A wheel loader more durable.

High Quality Hydraulic Hose

High quality hydraulic hoses increased durability and product life cycle.



*Photo may include optional equipment.



EASY CONTROL AND COMFORTABLE OPERATION

The HL960A is optimized to enable operators to access accurate equipment data in a timely manner. This feature is more important in tough working environments to increase productivity while enjoying various forms of entertainment. Enjoy unparalleled satisfaction provided by infotainment of Hyundai's state-of-the-art information technology!



Foldable Side Mirror **NEW**

Foldable side mirrors prevent damage when transporting narrow space.



Fully Adjustable Seat and Armrest **NEW**

This suspension will be applied for minimizing an operator's fatigue.



Ride Control **Option**

Ride control system reduces operator fatigue and material spillage during operation. An accumulator helps to minimize shock, giving the operator a much smoother ride.



Auto Greasing System **Option**

Auto greasing system is designed to automatically lubricate when it is needed. Uniform application of lubricant ensures that the lubrication points always have the correct amount of grease.



*Photo may include optional equipment.

Air Compressor **NEW** **Option**

Air Compressor will be used for cleaning inside the cabin and for operator self-cleaning.



Full Sound-Proofed Spacious Cabin

State-of-the-art noise reduction technology of the HL960A ensures maximum silence(68 dB) in the same category of equipment, promising more silent and more pleasant interior space.



Remote Door Control **NEW** **Option**

Remote door control allows operators to open the cabin door remotely. This system was developed for the convenience and safety of the operator.



Wide Touch Screen Monitor

The seven-inch capacitive-type display (like a smart phone display) provides excellent legibility.



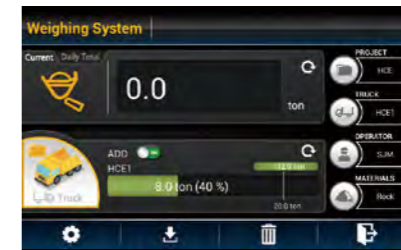
Centralized Cluster

With a centralized cluster, operator can see at a glance all the states of wheel loader.



Weighing System

The HL960A further improves work precision with additional weight calibration. The automatic/manual cumulative weighing function greatly enhances operating efficiency. Icons displaying weighing errors and the two-color weight value indication on the monitor enable accurate weighing to support efficient production management.



Soft End Stop

When an attachment reaches at the end stroke, it gives operator enormous shock especially for Boom up. This function gives shock free operation by reducing the speed of attachment near the end stroke. It can be selected on/off through Monitor.





HL960A with advanced technology ensures our safety on a construction site.



The A Series in wheel loaders are products of HCE's spirit of initiative, creativity, and strong drive. HCE engineers, who are the best in the industry, have worked tirelessly to offer a zero-defect product. The new A Series in wheel loaders reflects customers' needs in the field gleaned by thorough monitoring.

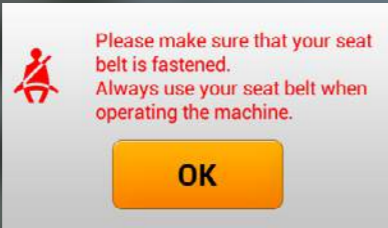
Emergency Stop **NEW**

In an emergency, operating the Emergency Stop switch located at the bottom of the seat will shut down the engine starting.



Seat Belt Warning Alarm **NEW**

Seat belt warning alarm allows the operator to work in a safer environment.



Radar **NEW** **Option**

The Radar system can detect rear obstacles without blind spots and no distinction between day and night. Also, the warning level of the nearest obstacle is always displayed on the secondary monitor.



AVM(Around View Monitoring) **Option**

IMOD(Intelligent Moving Object Detection) **Option**

This is a system that is combined AVM (Around View Monitoring) with IMOD (Intelligent Moving Object Detection) and detects people around the machine and analyzes the images, which displays a warning sign on a monitor when detecting the danger. So operators can watch the surroundings in a variety of angles through the monitor and prevent the safety accident in advance.



It displays the position of people with a top view.



A green warning sign is displayed when people move in within a 5-meters radius.



A red warning sign is displayed when people move in within a 3-meters radius.



THE ULTIMATE SAFE ENVIRONMENT

With the top priority on satisfaction of operators in terms of silence, safety and maintainability, Hyundai wheel loaders provide operators with comfortable cabin space by low-vibration, low-noise, and superior safety design. They also offer greater satisfaction by extending the replacement cycle of supplies and minimizing maintenance time and cost.



*Photo may include optional equipment.



SERVICEABILITY AND TELEMATICS

IoT, ICT, AI-based digital technologies is creating smart construction sites. Maximizes connectivity, productivity, and safety for your successful businesses.



HiMATE

Option

IT'S CONVENIENT, EASY AND VALUABLE

Hi-MATE Hyundai's newly developed remote management system, utilizes GPS-satellite technology to provide customers with the highest level of service and product support available. Hi-MATE enables users to remotely evaluate machine performance, access diagnostic information, and verify machine locations at the touch of a button.

WHAT IS BENEFITS



Increase Productivity

It helps you operate machines in efficient. You can check the difference between total engine hours and actual working hours. See how productive your machines are and plan any required cost saving solutions. Hi-MATE offers working information such as working / idling hours, fuel consumption and rate.



Convenient and Easy Monitoring

There is nothing much to do to monitor your machines. Just log on to the Hi-MATE website or mobile application. Hi-MATE allows you to watch your machines whenever and wherever you are.



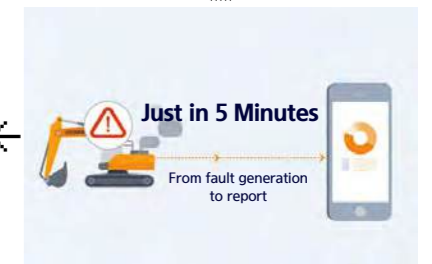
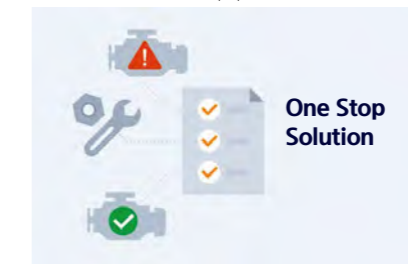
Security

Protect your machines from theft or unauthorized usage with Hi-MATE. If the machine moves out of the Geofence boundary, you will get alerts.

ECD(Engine Connected Diagnostics) **NEW**

It supports service technician with remote diagnostics report and ensure it arrive on site with proper tools after preparing in advance.

We are all connected



Fully Openable Engine Hood **NEW**

The HL955A has improved accessibility to the sealed engine room with retractable hood to allow easy cleaning and maintenance. The engine room was designed to prevent possibility of fire due to inflow of foreign materials. The fully retractable engine hood in the electric actuator opening mode also enhances maintainability of the engine room and cooling room.



Easy Filter Replacement

With easy filter replacement, machine can be managed more easily.



Wide Core & Fin Radiator

Wide core & fin radiator reduces clogging.



Longer Lasting Filter

The service interval of fuel filters has been increased from 500 hours to 1,000 hours.

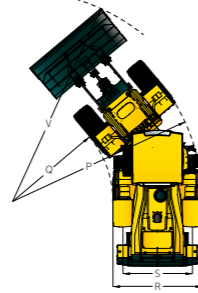
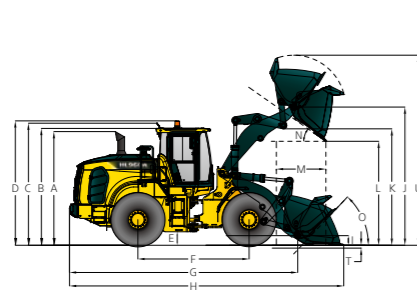


*Photo may include optional equipment.

DIMENSIONS & SPECIFICATIONS

HL960A DIMENSIONS

All dimensions are approximate.



Unit : mm (ft.-in)

Description	HL960A	HL960A XT
A Height to Top of Exhaust Pipe	3,340 (10' 11")	3,340 (10' 11")
B Height to Top of Cabin	3,450 (11' 3")	3,450 (11' 3")
C Height to Top of Product Link Antenna	3,505 (11' 6")	3,505 (11' 6")
D Height to Top of Warning Beacon	3,580 (11' 9")	3,580 (11' 9")
E Ground Clearance	410 (1' 4")	410 (1' 4")
F Wheelbase	3,300 (10' 10")	3,300 (10' 10")
G Overall Length (Without Bucket)	6,870 (22' 6")	7,425 (24' 4")
H Shipping Length (With Bucket Level on Ground)	8,140 (26' 8")	8,695 (28' 6")
I Hinge Pin Height at Carry Position	465 (1' 6")	600 (2')
J Hinge Pin Height at Maximum Lift	4,105 (13' 6")	4,535 (14' 11")

• T, U, V are indicated on the p.17

Description	HL960A	HL960A XT
K Lift Arm Clearance at Maximum Lift	3,455 (11' 4")	3,885 (12' 9")
L Dump Clearance at Maximum Lift and 45° Discharge	2,935 (9' 8")	3,365 (11')
M Reach at Maximum Lift and 45° Discharge	1,285 (4' 2")	1,380 (4' 6")
N Dump Angle at Maximum Lift and Dump (on Stops)	50	50
O Roll Back Angle	42	42
Ground Carry	47	48
P Clearance Circle (Diameter) to Outside of Tires	12,060 (39' 6")	12,060 (39' 6")
Q Clearance Circle (Diameter) to Inside of Tires	6,430 (21' 1")	6,430 (21' 1")
R Width Over Tires (Unloaded)	2,770 (9' 1")	2,770 (9' 1")
S Tread Width	2,160 (7' 1")	2,160 (7' 1")

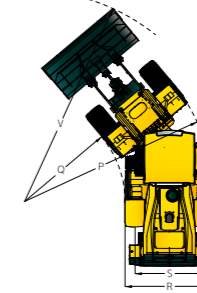
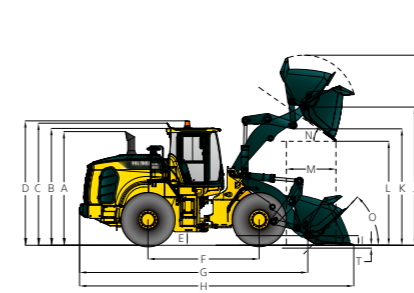
OPERATING SPECIFICATIONS WITH BUCKETS

Linkage Bucket Type	Standard Linkage General Purpose - Pin On				General Purpose - Hook On	
	Bolt-On Cutting Edges	1 Piece Tooth	2 Piece Tooth	2 Piece Tooth & Segment	Bolt-On Cutting Edges	High Lift Linkage Change
Capacity - Rated	3.3 m³ (4.3 yd³)	3.2 m³ (4.2 yd³)	3.2 m³ (4.2 yd³)	3.3 m³ (4.3 yd³)	3.3 m³ (4.3 yd³)	-
Capacity - Rated at 110% Fill Factor	3.6 m³ (4.7 yd³)	3.5 m³ (4.6 yd³)	3.5 m³ (4.6 yd³)	3.6 m³ (4.7 yd³)	3.6 m³ (4.7 yd³)	-
Width	2,900 mm (9' 6" ft/in)	2,950 mm (9' 8" ft/in)	2,970 mm (9' 9" ft/in)	2,970 mm (9' 9" ft/in)	2,900 mm (9' 6" ft/in)	-
Dump Clearance at Maximum Lift and 45° Discharge	2,935 mm (9' 7" ft/in)	2,810 mm (9' 3" ft/in)	2,775 mm (9' 2" ft/in)	2,775 mm (9' 2" ft/in)	2,755 mm (9' 1" ft/in)	430 mm (1' 5" ft/in)
Reach at Maximum Lift and 45° Discharge	1,285 mm (4' 3" ft/in)	1,370 mm (4' 6" ft/in)	1,390 mm (4' 7" ft/in)	1,390 mm (4' 7" ft/in)	1,465 mm (4' 10" ft/in)	95 mm (4" ft/in)
Digging Depth	90 mm (3.5" ft/in)	115 mm (4.5" ft/in)	125 mm (4.9" ft/in)	125 mm (4.9" ft/in)	90 mm (3.5" ft/in)	55 mm (2" ft/in)
Shipping Length (with Bucket)	8,140 mm (26' 8" ft/in)	8,290 mm (27' 2" ft/in)	8,330 mm (27' 4" ft/in)	8,330 mm (27' 4" ft/in)	8,395 mm (27' 7" ft/in)	555 mm (1' 10" ft/in)
Overall Height with Bucket at Maximum Lift	5,640 mm (18' 6" ft/in)	5,640 mm (18' 6" ft/in)	5,640 mm (18' 6" ft/in)	5,640 mm (18' 6" ft/in)	5,820 mm (19' 1" ft/in)	430 mm (1' 5" ft/in)
Loader Clearance Circle with Bucket at Carry Position	13,410 mm (44' ft/in)	13,570 mm (44' 6" ft/in)	13,620 mm (44' 8" ft/in)	13,620 mm (44' 8" ft/in)	13,570 mm (44' 6" ft/in)	450 mm (1' 6" ft/in)
Static Tipping Load, Straight (No Tire Deflection)	14,300 kg (31,525 lb)	14,500 kg (31,965 lb)	14,500 kg (31,965 lb)	14,250 kg (31,415 lb)	13,080 kg (28,835 lb)	-1,350 kg (-2,975 lb)
Static Tipping Load, Articulated (No Tire Deflection)	12,410 kg (27,360 lb)	12,580 kg (27,735 lb)	12,580 kg (27,735 lb)	12,360 kg (27,250 lb)	11,350 kg (25,020 lb)	-1,300 kg (-2,865 lb)
Breakout Force	16,670 kg (36,750 lb)	17,705 kg (39,030 lb)	17,705 kg (39,030 lb)	16,670 kg (36,750 lb)	13,870 kg (30,580 lb)	-240 kg (-530 lb)
Operating Weight*	19,200 kg (42,330 lb)	19,125 kg (42,160 lb)	19,125 kg (42,160 lb)	19,250 kg (42,440 lb)	19,590 kg (43,190 lb)	830 kg (1,830 lb)

* All height and tire related dimensions are with standard 23.5 R25, L3 tires.

HL960A HD DIMENSIONS

All dimensions are approximate.



Unit : mm (ft.-in)

Description	HL960A HD	HL960A HD XT
A Height to Top of Exhaust Pipe	3,340 (10' 11")	3,340 (10' 11")
B Height to Top of Cabin	3,450 (11' 3")	3,450 (11' 3")
C Height to Top of Product Link Antenna	3,505 (11' 6")	3,505 (11' 6")
D Height to Top of Warning Beacon	3,580 (11' 9")	3,580 (11' 9")
E Ground Clearance	410 (1' 4")	410 (1' 4")
F Wheelbase	3,300 (10' 10")	3,300 (10' 10")
G Overall Length (Without Bucket)	6,870 (22' 6")	7,425 (24' 4")
H Shipping Length (With Bucket Level on Ground)	8,140 (26' 8")	8,695 (28' 6")
I Hinge Pin Height at Carry Position	465 (1' 6")	600 (2')
J Hinge Pin Height at Maximum Lift	4,105 (13' 6")	4,535 (14' 11")

• T, U, V are indicated on the p.17

Description	HL960A HD	HL960A HD XT
K Lift Arm Clearance at Maximum Lift	3,455 (11' 4")	3,885 (12' 9")
L Dump Clearance at Maximum Lift and 45° Discharge	2,935 (9' 8")	3,365 (11')
M Reach at Maximum Lift and 45° Discharge	1,285 (4' 2")	1,380 (4' 6")
N Dump Angle at Maximum Lift and Dump (on Stops)	50	50
O Roll Back Angle	42	42
Ground Carry	47	48
P Clearance Circle (Diameter) to Outside of Tires	12,060 (39' 6")	12,060 (39' 6")
Q Clearance Circle (Diameter) to Inside of Tires	6,430 (21' 1")	6,430 (21' 1")
R Width Over Tires (Unloaded)	2,770 (9' 1")	2,770 (9' 1")
S Tread Width	2,160 (7' 1")	2,160 (7' 1")

OPERATING SPECIFICATIONS WITH BUCKETS

Linkage Bucket Type	Standard Linkage General Purpose - Pin On				General Purpose - Hook On	
	Bolt-On Cutting Edges	1 Piece Tooth	2 Piece Tooth	2 Piece Tooth & Segment	Bolt-On Cutting Edges	High Lift Linkage Change
Capacity - Rated	3.3 m³ (4.3 yd³)	3.2 m³ (4.2 yd³)	3.2 m³ (4.2 yd³)	3.3 m³ (4.3 yd³)	3.3 m³ (4.3 yd³)	-
Capacity - Rated at 110% Fill Factor	3.6 m³ (4.7 yd³)	3.5 m³ (4.6 yd³)	3.5 m³ (4.6 yd³)	3.6 m³ (4.7 yd³)	3.6 m³ (4.7 yd³)	-
Width	2,900 mm (9' 6" ft/in)	2,950 mm (9' 8" ft/in)	2,970 mm (9' 9" ft/in)	2,970 mm (9' 9" ft/in)	2,900 mm (9' 6" ft/in)	-
Dump Clearance at Maximum Lift and 45° Discharge	2,935 mm (9' 7" ft/in)	2,810 mm (9' 3" ft/in)	2,775 mm (9' 2" ft/in)	2,775 mm (9' 2" ft/in)	2,755 mm (9' 1" ft/in)	430 mm (1' 5" ft/in)
Reach at Maximum Lift and 45° Discharge	1,285 mm (4' 3" ft/in)	1,370 mm (4' 6" ft/in)	1,390 mm (4' 7" ft/in)	1,390 mm (4' 7" ft/in)	1,465 mm (4' 10" ft/in)	95 mm (4" ft/in)
Digging Depth	90 mm (3.5" ft/in)	115 mm (4.5" ft/in)	125 mm (4.9" ft/in)	125 mm (4.9" ft/in)	90 mm (3.5" ft/in)	55 mm (2" ft/in)
Shipping Length (with Bucket)	8,140 mm (26' 8" ft/in)	8,290 mm (27' 2" ft/in)	8,330 mm (27' 4" ft/in)	8,330 mm (27' 4" ft/in)	8,395 mm (27' 7" ft/in)	555 mm (1' 10" ft/in)
Overall Height with Bucket at Maximum Lift	5,640 mm (18' 6" ft/in)	5,640 mm (18' 6" ft/in)	5,640 mm (18' 6" ft/in)	5,640 mm (18' 6" ft/in)	5,820 mm (19' 1" ft/in)	430 mm (1' 5" ft/in)
Loader Clearance Circle with Bucket at Carry Position	13,410 mm (44' ft/in)	13,570 mm (44' 6" ft/in)	13,620 mm (44' 8" ft/in)	13,620 mm (44' 8" ft/in)	13,570 mm (44' 6" ft/in)	450 mm (1' 6" ft/in)
Static Tipping Load, Straight (No Tire Deflection)	14,400 kg (31,750 lb)	14,600 kg (32,190 lb)	14,600 kg (32,190 lb)	14,350 kg (31,415 lb)	13,170 kg (29,035 lb)	-1,350 kg (-2,975 lb)
Static Tipping Load, Articulated (No Tire Deflection)	12,500 kg (27,560 lb)	12,670 kg (27,930 lb)	12,670 kg (27,930 lb)	12,450 kg (27,450 lb)	11,430 kg (25,200 lb)	-1,300 kg (-2,865 lb)
Breakout Force	16,670 kg (36,750 lb)	17,705 kg (39,030 lb)	17,705 kg (39,030 lb)	16,670 kg (36,750 lb)	13,870 kg (30,580 lb)	-240 kg (-530 lb)
Operating Weight*	19,450 kg (42,880 lb)	19,375 kg (42,710 lb)	19,375 kg (42,710 lb)	19,500 kg (42,990 lb)	19,840 kg (43,740 lb)	830 kg (1,830 lb)

* All height and tire related dimensions are with standard 23.5 R25, L3 tires.

BUCKET SELECTION CHART / SPECIFICATIONS

DENSITY OF OPERATING MATERIALS		
Loose Material	Material Density [ton / m ³]	
Earth / Clay	1.5 ~ 1.7	
Sand and Gravel	1.5 ~ 1.7	
Aggregate	25 ~ 76 mm (1 to 3 in)	1.6 ~ 1.7
	19mm (0.75 in) and Larger	1.8

HL960A / HL960A HD BUCKET SELECTION CHART

Standard lift arm - General Purpose

Type	m ³ (yd ³)	Material Density [ton / m ³]											
		1.1	1.2	1.3	1.4	1.5	1.6	1.7	1.8	1.9	2.0	2.1	2.2
Cutting Edge	3.3 (4.32)	3.8 m ³ (4.97 yd ³)										3.1 m ³ (4.05 yd ³)	
1-Bolt on Tooth	3.2 (4.19)	3.7 m ³ (4.84 yd ³)										3.0 m ³ (3.92 yd ³)	
2-Bolt on Tooth	3.2 (4.19)	3.7 m ³ (4.84 yd ³)										3.0 m ³ (3.92 yd ³)	
2-Bolt on Tooth & Segment edge	3.3 (4.32)	3.8 m ³ (4.97 yd ³)										3.1 m ³ (4.05 yd ³)	
Cutting Edge Q/C	3.3 (4.32)	3.8 m ³ (4.97 yd ³)										3.1 m ³ (4.05 yd ³)	

High lift arm - General Purpose

Type	m ³ (yd ³)	Material Density [ton / m ³]											
		1.1	1.2	1.3	1.4	1.5	1.6	1.7	1.8	1.9	2.0	2.1	2.2
Cutting Edge	3.3 (4.32)	3.8 m ³ (4.97 yd ³)										3.1 m ³ (4.05 yd ³)	
1-Bolt on Tooth	3.2 (4.19)	3.7 m ³ (4.84 yd ³)										3.0 m ³ (3.92 yd ³)	
2-Bolt on Tooth	3.2 (4.19)	3.7 m ³ (4.84 yd ³)										3.0 m ³ (3.92 yd ³)	
2-Bolt on Tooth & Segment Edge	3.3 (4.32)	3.8 m ³ (4.97 yd ³)										3.1 m ³ (4.05 yd ³)	
Cutting Edge Q/C	3.3 (4.32)	3.8 m ³ (4.97 yd ³)										3.1 m ³ (4.05 yd ³)	

115% 100% 95%

CHANGE IN OPERATING SPECIFICATIONS - TIRES

Tires	23.5-25 20PR L5	23.5 R25, ★, XHA	23.5-25 20PR L3	23.5-25 Solid Tire
Operating Weight(kg)	500 kg (1,100 lb)	-150 kg (-330 lb)	-150 kg (-330 lb)	2,290 kg (5,050 lb)
Static Tipping Load, Straight (No Tire Deflection)	370 kg (820 lb)	-110 kg (-240 lb)	-110 kg (-240 lb)	1,670 kg (3,680 lb)
Static Tipping Load, Articulated (No Tire Deflection)	320 kg (710 lb)	-95 kg (-210 lb)	-95 kg (-210 lb)	1,440 kg (3,170 lb)
Vertical Height Changes	60 mm (2.36" ft/in)	-10 mm (-0.39" ft/in)	-9 mm (-0.35" ft/in)	30 mm (1.18" ft/in)
R. Width Over Tires(Unloaded)	16 mm (0.63" ft/in)	-2 mm (-0.07" ft/in)	4 mm (0.16" ft/in)	6 mm (+0.24" ft/in)
P. Clearance Circle(Diameter) to Outside of Tires	16 mm (0.63" ft/in)	-2 mm (-0.07" ft/in)	4 mm (0.16" ft/in)	6 mm (+0.24" ft/in)
Q. Clearance Circle(Diameter) to Inside of Tires	-16 mm (-0.63" ft/in)	2 mm (0.07" ft/in)	-4 mm (-0.16" ft/in)	-6 mm (-0.24" ft/in)

** Dimension changes compared to 23.5R25, ★★, L3 radial tires.

OVERVIEW

Description	HL960A	HL960A XT	HL960A HD	HL960A HD XT
Operating Weight	19,200 kg (42,330 lb)	20,030 kg (44,160 lb)	19,450 kg (42,880 lb)	20,280 kg (44,710 lb)
Bucket Capacity	Heaped	3.3 m ³ (4.3 yd ³)	3.3 m ³ (4.3 yd ³)	3.3 m ³ (4.3 yd ³)
	Struck	2.9 m ³ (3.8 yd ³)	2.9 m ³ (3.8 yd ³)	2.9 m ³ (3.8 yd ³)
Breakout Force - Bucket	16,670 kg (36,750 lb)	16,430 kg (36,220 lb)	16,670 kg (36,750 lb)	16,430 kg (36,220 lb)
Tipping Load	Straight	14,300 kg (31,525 lb)	12,950 kg (28,550 lb)	14,400 kg (31,750 lb)
	Full Turn	12,410 kg (27,360 lb)	11,110 kg (24,495 lb)	12,500 kg (27,560 lb)

SPECIFICATIONS

ENGINE	
Maker / Model	CUMMINS / B6.7
Type	6 cylinder, water cooled, 4-cycle, turbocharged, charge air cooled, direct injection, electronic controlled diesel engine
Gross Power (Sae J1995)	225 HP (168 kW) at 2,200 rpm
Net Power (Sae J1349)	222 HP (166 kW) at 2,200 rpm
Max. Power	251 HP (188 kW) at 1,900 rpm
Peak Gross Torque (Sae J1995)	1,186 N·m (875 lb·ft) at 1,300 rpm
Displacement	6.7 ℓ (408 cu in)

TRANSMISSION

Travel Speed	4 Speed T/M	5 Speed T/M with lock up clutch
Forward km/h (mph)	1st	6.4 km/h (3.9 mph)
	2nd	12.1 km/h (7.5 mph)
	3rd	24.5 km/h (15.2 mph)
	4th	39.0 km/h (24.2 mph)
	5th	-
Reverse km/h (mph)	1st	6.8 km/h (4.2 mph)
	2nd	12.8 km/h (7.9 mph)
	3rd	25.7 km/h (15.9 mph)

• This is the maximum travel speed of a standard machine with unfilled bucket.

AXLES

Drive System	Four-wheel drive system
Mount	Rigid front axle and oscillating rear axle
Rear Axle Oscillation	Oscillation ±12 ° of center pin-loaded
Hub Reduction	Planetary reduction at wheel end
Differential	Conventional
Reduction Ratio	24.667

TIRES

Type	Tubeless, loader design tires
Standard	23.5 R25, ★★, L3
Options Include	23.5 R25, ★, XHA 23.5-25, 20PR, L3 23.5-25, 20PR, L5 23.5-25, Solid tire

BRAKES

Service Brakes	Hydraulically actuated, wet disc brakes actuate all 4 wheels, independent axle-by-axle system. Self adjusting & wheel speed brake.
Parking Brake	Spring-applied, hydraulically released brake
Emergency Brake	When brake oil pressure drops, indicator light alerts operator and parking brake automatically applies.

HYDRAULIC SYSTEM

Type	Load sensing hydraulic system	
Implement System		
Maximum Pump Output	239 ℓ /min (63.1 gal/min) at 2,130 rpm	
Maximum Operating Pressure	28,000 kPa (4,061 psi)	
Hydraulic Cycle Time with Rated Payload	Raise from Carry Position : 5.9 Sec.	
	Dump, at maximum raise : 1.5 Sec.	
	Lower, empty, float down : 3.5 Sec.	
Cylinder	Total : 10.9 Sec.	
	Type : double acting	
	No. of cylinders-bore × stroke	
	Lift	2-140 × 765 mm (2-5.5" × 30.1")
	HL960A Tilt	1-160 × 530 mm (1-6.3" × 20.9")
	HL960A XT Tilt	1-160 × 530 mm (1-6.3" × 20.9")

STEERING SYSTEM

Type	Load sensing hydrostatic articulated steering
Pump	Variable displacement piston pump, 148.5 ℓ/min (39.2 gal/min)
System Pressure	21,000 kPa (3,046 psi)
Cylinder	Double acting 2-80 mm (3.15") × 424 mm (16.7")
Steering Angle	40° to both right and left angle, respectively

* Hyundai Bio Hydraulic Oil (HBHO) available

SERVICE REFILL CAPACITIES

Fuel Tank	260.0 liters (68.6 US gal)
Def Tank	30.0 liters (7.9 US gal)
Cooling System	42.0 liters (11.1 US gal)
Crankcase	18.0 liters (4.7 US gal)
Transmission	33.0 liters (8.7 US gal)
Front Axle	35.0 liters (9.2 US gal)
Rear Axle	35.0 liters (9.2 US gal)
Hydraulic Tank	110.0 liters (29.0 US gal)
Hydraulic System (Including Tank)	200.0 liters (52.8 US gal)

CAB

ROPS / FOPS meet ISO 3471 and ISO 3449 level II standards

SOUND

Guaranteed noise level presented below can be differed depending on a range of factors such as operating condition, speed of a cooling fan, types of engine and so forth. Hearing protection shall be necessary if an operator is working in the improperly maintained cabin or exposed to a noisy environment by leaving doors and/or windows open.

With cooling fan speed at maximum value:	
Operator sound pressure level (ISO 6396:2008)	68dB
Exterior sound power level (ISO 6395:2008)	105 dB(A)

* Distance of 15 m (49.2 ft), moving forward in second gear ratio.

STANDARD / OPTION

CAB & INTERIOR	STD
ALARMS, AUDIBLE AND VISUAL	
Emergency warning lamp	●
Engine coolant temperature	●
Transmission oil temperature	●
Hydraulic oil temperature	●
Fuel level	●
Transmission error	●
Air filter clogging	●
Engine oil pressure	●
Battery voltage	●
Brake oil pressure	●
Engine stop	●
Engine coolant level	●
INDICATOR LIGHTS	
Parking brake	●
High beam	●
Joystick steering	
FNR	
Differential Lock	
Pilot cut off	●
Turning light	●
Seat belt ON/OFF	●
Engine auto stop	●
Clutch Cut Off	●
Ride control	
LCD	
DEF level	●
DEF low level	●
Transmission gear range	●
Clock and fault code	●
Job time and distance	●
Operating hour counter	●
Engine rpm	●
Horn, electric	●
GUAGES	
Engine coolant temperature	●
Fuel level	●
Transmission oil temperature	●
Speedometer	●
BATTERIES	
900CCA, 12V, 2PCS	●
LIGHTING SYSTEM	
Brake lights(Counterweight)	●
LED dome light	●
2 stop and tail lights	●
4 turn signals	●
2 Head lights on front tower	●
2 Head lights (LED) on front tower	
2 Working lights on front roof	●
4 Working lights on front roof	
2 Working lights on rear roof	
4 Working lights (LED) on front roof	
2 Working lights (LED) on rear roof	
2 Working lights on grill	●
2 Working lights (LED) on grill	

CAB & INTERIOR	STD
SWITCHES	
Battery master switch	●
Differential Lock	
Engine hood open	●
FNR shifter	
Hazard	●
Parking	●
Pilot cut off	●
Selective catalytic reduction	●
Secondary steering	
MEMBRANE SWITCHES IN MONITOR	
Main light	●
Work light	●
Auto grease	
Quick coupler	
Ride control	
Work load	●
Beacon light	
Rear wiper	
Mirror heat	●
Auto position	●
Fine modulation	●
IGNITION	
Key	●
Button	
CAB(SOUND SUPPRESSED)	
ROPS / FOPS CAB.	●
Cigar lighter & ashtray	
Coat hook	●
Rear view mirrors (1 Inside)	●
Rear view mirrors (2 Outside, heated)	●
Steering column, tilt and telescopic	●
Steering wheel with knob	●
Roller type sunshade (Front window)	●
Roller type sunshade (Rear window)	
Tinted safety glass	●
One door cab	●
Magazine pocket	●
Radio / USB player	●
Rubber floor mat	●
Wrist rest	●
24V to 12V DC converter (20A)	
DOOR	
Door and cab locks, one key	●
Doors, service access (Locking)	●
Doors, service access (Remote control)	
AUTOMATIC CLIMATE CONTROL	
Air conditioner & heater	●
Defroster	●
Intermittent wiper and washer, front and rear	●
SEAT	
2" Retractable seat belt & adjustable mechanical suspension (Heated)	●
2" Retractable seat belt & adjustable air suspension (Heated)	
3" Retractable seat belt & adjustable air suspension (Heated)	
PERSONAL STORAGE SPACE	
Console box	●
Holder, can and cup	●

CAB & INTERIOR	STD
PEDALS	
One acceletator pedal	●
One brake pedal	●
Dual-brake pedal	
Accel pedal without ECO switch	●
Accel pedal with ECO switch	
ENGINE	
Alternator, 95A	●
Antifreeze	●
Fuel warmer	●
Fan guard	●
Rain cap, engine air intake	●
Coolant level sight gauge	●
3 Stage air precleaner	
ENGINE, CUMMINS, B6.7	
EU Stage V	●
Fuel / water separator	●
Engine oil level dipstick gauge	●
CLEAN EMISSION MODULE	
DOC, SCR, DPF	●
POWER TRAIN	
TRANSMISSION	
Transmission F4/R3, computer controlled, electronic soft shift, auto-shift and kick-down features included	●
Transmission F5/R3 with lock-up clutch & thermostat	
Transmission oil sight level	●
AXLE	
Open differential (Front / Rear)	●
Limited slip differential (Front / Rear)	
Hydraulic lock differential (Front)	
Axle cooling system	
BRAKE	
Service brake (Enclosed wet-disc)	●
Parking brake	●
TIRES	
23.5 R25, ★★, L3	●
23.5 R25, XHA2	
23.5-25, 20PR, L3	
23.5-25, 20PR, L5	
HYDRAULIC SYSTEM	
Auto grease system	●
Boom kickout, automatic	●
Bucket positioner, automatic	●
Diagnostic pressure taps	●
EH Control(Joystick)	●
EH Control(Fingertip)	
EH joystick steering	
Extra piping for auxiliary function	
Hyundai Bio Hydraulic Oil(HBHO)	
Hydraulic oil level sight gauge	●
Quick coupler piping	
Ride control system	
Secondary steering system	
SAFETY	
Emergency Stop	●
Fire extinguisher	
Alarm, back-up	●
Boom safety lock	
Emergency steering	

SAFETY	STD
OBJECT DETECTION	
IMOD(Intelligent Moving Object Detection)	
AVM(Around View Monitoring)	
RADAR + Secondary Mornitor	
WASTE HANDLING PACKAGE (HL960A HD)	
AXLE	
Hydraulic lock differential - HD (Front)	●
Open differential - HD (Rear)	●
FULL GUARDS	
MCV(Machine Control Valve)	
Bucket cylinder	
Cabin glass (Front / Rear)	
Head lamp	
Axle seal (Front / Rear)	
Rear combi-lamp	
Work light (rear)	
Radiator	
Attachment hydraulic hose	
TIRE	
SOLID(23.5-25)	
OTHERS	
Articulation locking bar	●
Air compressor	
Tool kit	
Loader linkage, sealed	●
Lift and tie-down hooks	●
Z-bar design	●
Vandalism protection caplocks	●
BUCKET	
Tooth, 1 piece, bolt on type	
Tooth, 2 piece, bolt on type	
Cutting edge, bolt on type	●
Quick coupler	
COUNTERWEIGHT	
Counterweight	●
Counterweight - Heavy weight	
Drawbar with pin	●
ERGONOMICALLY LOCATED AND SLIP RESISTANT,LEFT & RIGHT	
Handrails	●
Ladders	●
Platforms	●
Steps	●
TELEMATICS	
Hi-mate	
ECD (Engine Connected Diagnostics)	●
GUARDS	
Crankcase	
Transmission	
Fenders (Front / Rear)	●
Mud guards	
Cabin glass (Front / Rear)	

* Standard and optional equipment may vary. Contact your Hyundai dealer for more information. The machine may vary according to International standards.
 * The photos may include attachments and optional equipment that are not available in your area.
 * Materials and specifications are subject to change without advance notice.
 * All imperial measurements rounded off to the nearest pound or inch.