



▲ HYUNDAI CONSTRUCTION EQUIPMENT

Head Office(Sales Office)  
3F, Bundang First Tower, 55 Bundang-ro, Bundang-gu, Seongnam-si, Gyeonggi-do, 13591, Korea

PLEASE CONTACT

Gross Power  
173 HP(129 kW) at 2,100 rpm

Net Power  
170 HP(127 kW) at 2,100 rpm

Bucket Capacity  
2.8 m<sup>3</sup>

Operating Weight  
15,650kg / 34,505 lb

# HL955

With Tier-3 / Stage III A Engine installed





# WHAT'S NEWEST AND BEST

**HL955**

## THE BEST PRODUCTIVITY AND FUEL EFFICIENCY

- Eco-friendly Tier-3 Engine
- Eco Report
- Smart Power Mode
- Hydraulic Differential Lock **Option**
- Electro-Hydraulic Control
- Parallel Z-bar Linkage
- ICCO (Intelligent Clutch Cut Off)
- Automatic Engine Shut Down

## ULTIMATE DURABILITY

- Unified Control Valve
- Enhanced Axle Capacity
- Axle Oil Cooling System **Option**
- Sinter Brake Disc
- Optimized Drive Shaft
- High Quality Hydraulic Hose

## EASY CONTROL AND COMFORTABLE OPERATION

- Fully Adjustable Seat and Armrest
- Remote Door Control **Option**
- Auto Greasing System **Option**
- Ride Control **Option**
- Full Sound-Proofed Spacious Cabin
- Wide Touch Screen Monitor
- Centralized Cluster
- Soft end Stop
- Weighing System

## THE ULTIMATE SAFE ENVIRONMENT

- Emergency Stop
- Seat Belt Warning Alarm
- Radar **Option**
- AVM (Around View Monitoring) **Option**
- IMOD (Intelligent Moving Object Detection) **Option**

## SERVICEABILITY AND TELEMATICS

- ECD(Engine Connected Diagnostics)
- Fully Openable Engine Hood
- Hi MATE **Option**
- Easy Filter Replacement
- Wide Core & Fin Radiator



\* Photo may include optional equipment.





# THE BEST PRODUCTIVITY AND FUEL EFFICIENCY

The new HYUNDAI HL955 is satisfying the Tier3 emission regulation and HL900 (T3) in wheel loader have a number of new features that contribute to overall fuel and also production efficiency

FUEL SAVINGS

up to **11%**

V-type loading cycle  
(Compared to HL757-9)



\* Photo may include optional equipment.

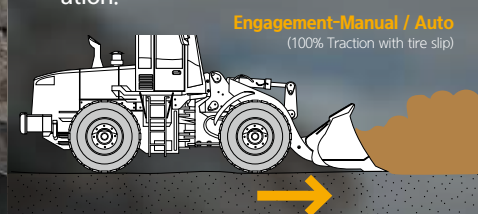
## Smart Power Mode

Smart Power mode reduces fuel consumption by adjusting the engine speed in heavy load work like digging. The key point of this function is not only saving fuel with same performance as Power mode but also making good balance between traction force and breakout force.



## Hydraulic Differential Lock **Option**

Hydraulic differential lock has the advantages of both improving productivity and less fuel consumption by preventing tire slip during the operation.



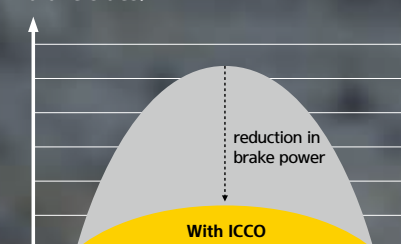
## Parallel Z-bar Linkage

Newly developed parallel z-bar linkage provides perfect parallel lift function with high tilt forces.



## ICCO (Intelligent Clutch Cut Off)

By selecting of 'H-Mode' among clutch cut-off selections, ICCO will be engaged for both less power loss in torque converter and lower heat generation on brake sides.



## HYUNDAI HE 6.7 Engine

HYUNDAI HE6.7 engine combines advanced electronic controls and a self-diagnostic system with reliable performance. The combination of a high pressure common rail system and an advanced in-cylinder combustion technology results in increased power, improved transient response and reduced fuel consumption. HYUNDAI HE6.7 engine complies with current emissions standards including EPA Tier3 and EU Stage III-A.

## Eco Report

Eco report shows the wheel loader's inefficient operation status in order to improve operator's improper working habit.



## Automatic Engine Shut Down

Adjustable 'Automatic engine shut down' significantly reduces idle time, overall operating hours and fuel consumption.



## Electro-Hydraulic Control

With improved precision and operability, the electro-hydraulic control system of the HL900 (T3) Series provides diverse functions and easy handling to control any working conditions, increasing productivity and reducing fatigue of operators.

\* Fine operation/bucket priority / Auxiliary attachment max flow / Soft end stop





### Unified Control Valve

HL955 improved hydraulic system. Unified control valve system removes the hydraulic hose connected with each valve and has fewer leak points. Because MCV is integrated with ride control valve and EPPR valve.

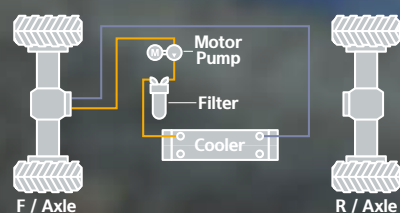
### Enhanced Axle Capacity

HL955 applied larger capacity rear axle than the previous series. It offers more reliable performance and longer durability.



### Axle Oil Cooling System Option

Axle oil cooling system prevents overheating of axle oil caused by frequent braking and high-load work.



### Sinter Brake Disc

The HL900 (T3) Series has a sinter disc of a new material with excellent durability to suppress generation of heat and vibration, heightening brake durability and enabling convenient maintenance with a service-friendly design.



### Optimized Drive Shaft

Through thorough verification, the optimized drive shaft makes the HL955 wheel loader more durable.

### High Quality Hydraulic Hose

High quality hydraulic hoses increased durability and product life cycle.



# ULTIMATE DURABILITY

The true value of the HL955, which is now far more powerful, is revealed in tough working environments. With the high-strength design structure and enduring system proven by rigorous road tests at various work sites, Hyundai wheel loaders can perform any high-load work to maximize productivity.



\*Photo may include optional equipment.





# EASY CONTROL AND COMFORTABLE OPERATION

The HL955 is optimized to enable operators to access accurate equipment data in a timely manner. This feature is more important in tough working environments to increase productivity while enjoying various forms of entertainment. Enjoy unparalleled satisfaction provided by infotainment of Hyundai's state-of-the-art information technology!

\*Photo may include optional equipment.

## Electro-Hydraulic Control Lever

Hyundai's wheel loaders have an electro-hydraulic control lever. Operators can operate attachments with less strength, enabling greater productivity and minimizing fatigue of operators. (Roller switch for AUX SPOOL Control)



## Fully Adjustable Seat and Armrest

This suspension will be applied for minimizing an operator's fatigue.



## Ride Control Option

Ride control system reduces operator fatigue and material spillage during operation. An accumulator helps to minimize shock, giving the operator a much smoother ride.



## Auto Greasing System Option

Auto greasing system is designed to automatically lubricate when it is needed. Uniform application of lubricant ensures that the lubrication points always have the correct amount of grease.



## Full Sound-Proofed Spacious Cabin

State-of-the-art noise reduction technology of the HL955 ensures maximum silence(70dB) in the same category of equipment, promising more silent and more pleasant interior space.



## New Air Conditioning System

Hyundai's wheel loaders maximize heating and cooling performance by optimizing air flow. The air conditioning system is placed on the right side of the cabin to ensure easy maintenance and filter replacement. The capacity of the inner filter was increased. Filter material was changed for superior filtering performance.



## Remote Door Control Option

Remote door control allows operators to open the cabin door remotely. This system was developed for the convenience and safety of the operator.



## Wide Touch Screen Monitor

The seven-inch capacitive-type display (like a smart phone display) provides excellent legibility.



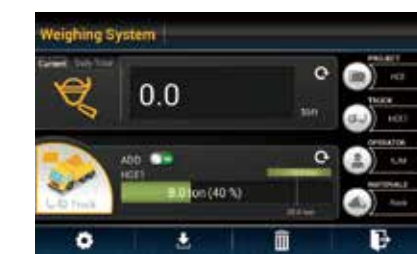
## Centralized Cluster

With a centralized cluster, operator can see at a glance all the states of wheel loader.



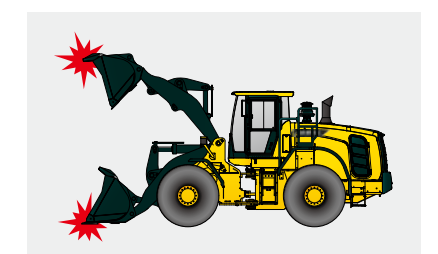
## Weighing System

The HL955 further improves work precision with additional weight calibration. The automatic/manual cumulative weighing function greatly enhances operating efficiency. Icons displaying weighing errors and the two-color weight value indication on the monitor enable accurate weighing to support efficient production management.



## Soft End Stop

When an attachment reaches at the end stroke, it gives operator enormous shock especially for Boom up. This function gives shock free operation by reducing the speed of attachment near the end stroke. It can be selected on/off through Monitor.







# THE ULTIMATE SAFE ENVIRONMENT

With the top priority on satisfaction of operators in terms of silence, safety and maintainability, Hyundai wheel loaders provide operators with comfortable cabin space by low-vibration, low-noise, and superior safety design. They also offer greater satisfaction by extending the replacement cycle of supplies and minimizing maintenance time and cost.



HL955 with advanced technology ensures our safety on a construction site. //



The HL900 (T3) Series in wheel loaders are products of HCE's spirit of initiative, creativity, and strong drive. HCE engineers, who are the best in the industry, have worked tirelessly to offer a zero-defect product. HL900(T3) in wheel loaders reflects customers' needs in the field gleaned by thorough monitoring.

## Emergency Stop

In an emergency, operating the Emergency Stop switch located at the bottom of the seat will shut down the engine starting.



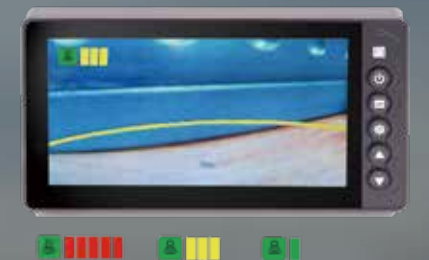
## Seat Belt Warning Alarm

Seat belt warning alarm allows the operator to work in a safer environment.



## Radar Option

The Radar system can detect rear obstacles without blind spots and no distinction between day and night. Also, the warning level of the nearest obstacle is always displayed on the secondary monitor.



## AVM(Around View Monitoring) Option

## IMOD(Intelligent Moving Object Detection) Option

This is a system that is combined AVM (Around View Monitoring) with IMOD (Intelligent Moving Object Detection) and detects people around the machine and analyzes the images, which displays a warning sign on a monitor when detecting the danger. So operators can watch the surroundings in a variety of angles through the monitor and prevent the safety accident in advance.

### AVM



It displays the position of people with a top view.

### IMOD



A green warning sign is displayed when people move in within a 5-meters radius.

A red warning sign is displayed when people move in within a 3-meters radius.





# SERVICEABILITY AND TELEMATICS

IoT, ICT, AI-based digital technologies is creating smart construction sites. Maximizes connectivity, productivity, and safety for your successful businesses.



\*Photo may include optional equipment.

## HiMATE

Option

### IT'S CONVENIENT, EASY AND VALUABLE

Hi-MATE Hyundai's newly developed remote management system, utilizes GPS-satellite technology to provide customers with the highest level of service and product support available. Hi-MATE enables users to remotely evaluate machine performance, access diagnostic information, and verify machine locations at the touch of a button.

### WHAT IS BENEFITS



#### Increase Productivity

It helps you operate machines in efficient. You can check the difference between total engine hours and actual working hours. See how productive your machines are and plan any required cost saving solutions. Hi-MATE offers working information such as working / idling hours, fuel consumption and rate.



#### Convenient and Easy Monitoring

There is nothing much to do to monitor your machines. Just log on to the Hi-MATE website or mobile application. Hi-MATE allows you to watch your machines whenever and wherever you are.



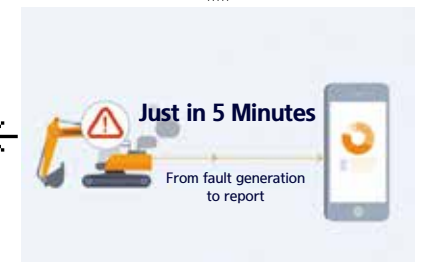
#### Security

Protect your machines from theft or unauthorized usage with Hi-MATE. If the machine moves out of the Geo-fence boundary, you will get alerts.

### ECD(Engine Connected Diagnostics)

It supports service technician with remote diagnostics report and ensure it arrive on site with proper tools after preparing in advance.

#### We are all connected



### Fully Openable Engine Hood

The HL955 has improved accessibility to the sealed engine room with retractable hood to allow easy cleaning and maintenance. The engine room was designed to prevent possibility of fire due to inflow of foreign materials. The fully retractable engine hood in the electric actuator opening mode also enhances maintainability of the engine room and cooling room.



### Easy Filter Replacement

With easy filter replacement, machine can be managed more easily.



### Wide Core & Fin Radiator

Wide core & fin radiator reduces clogging.





# SPECIFICATIONS

ENGINE	
Maker / Model	HYUNDAI / HE6.7
Type	4-cycle, turbocharged, charge air cooled, electronic controlled diesel engine
Gross power (SAE J1995)	173 HP (129 kW) at 2,100 rpm
Net power (SAE J1349)	170 HP (127 kW) at 2,100 rpm
Max. Power	173 HP (129 kW) at 2,100 rpm
Peak Torque(SAE J1995)	813 N · m (600 lb.ft) at 1,400 rpm
Displacement	6.7 ℓ (409 cu in)

TRANSMISSION			
4-Speed transmission	Model	4WG190	
	Type	Torque Converter Type	3-Elements, Single-stage, Single-phase
		Transmission	Full-automatic power shift
Travel speed		4 Speed T/M	
		km/h	mph
Forward	1st	6.8	(4.2)
	2nd	11.2	(7)
	3rd	22.6	(14)
	4th	37.3	(23.2)
	5th	-	-
Reverse	1st	7.1	(4.4)
	2nd	11.8	(7.3)
	3rd	23.8	(14.8)
Brake Distance		m	(ft/in)
		11.8	(38' 9")

• This is the maximum travel speed of a standard machine with unfilled bucket.

AXLES	
Drive system	Four-wheel drive system
Front	Fixed
Rear	Oscillating ±12 degrees
Hub reduction	Planetary reduction at wheel end
Differential	Limited Slip Differential
Reduction ratio	23.333

TIRES	
Type	Tubeless, loader design tyres
Standard	20.5 R25,★ ★ ,L3
Options Include	20.5-25 L5 16PR
	20.5R25 XHA2 ★
	20.5-25 L3 16PR

OVERVIEW							
Model		Unit		HL955		HL955XT	
Operating Weight		kg	lb	15,650	34,505	16,340	36,025
Bucket Capacity	Heaped	m³	yd³	2.80	3.70	2.80	3.70
	Struck	m³	yd³	3.08	4.00	3.08	4.00
BreakoutForce-Bucket		kg	lb	14,370	31,685	14,540	32,060
Tipping Load	Straight	kg	lb	11,000	24,255	9,100	20,065
	Full Turn	kg	lb	9,550	21,055	7,900	17,420

HYDRAULIC SYSTEM		
Type	Load sensing hydraulic system	
Pump	Variable displacement piston pump	
System Pressure	280 bar (4,061 psi)	
Control Valve	2 Spool (Bucket, Boom) 3 Spool (Bucket, Boom, Aux)	
Lift Circuit	The valve has four functions: Raise / Hold / Lower / Float Can adjust automatic kickout from horizontal to full lift.	
Tilt Circuit	The valve has three functions: Tilt back / Hold / Dump Can adjust automatic bucket positioner to desired load angle.	
Cylinder	Type: double acting	
	No. of cylinders-bore × stroke	Lift 2-125 × 745 mm (2-4.9" × 29.3")
		Tilt 1-140 x 560 mm (1-5.5" × 1' 10")
		Tilt (XTD) 1-140 x 585 mm (1-5.5" × 1' 11")
Hydraulic Cycle Time with Rated Payload	Raise from Carry Position: 5.5 Sec.	
	Dump, at maximum raise: 1.8 Sec.	
	Lower, empty, float down: 3.7 Sec.	
	Total: 11.0 Sec.	

BRAKES	
Service Brakes	Hydraulically actuated, wet disc brakes actuate all 4 wheels, independent axle-by-axle system.
Parking Brake	Spring-applied, hydraulically released brake
Emergency Brake	When brake oil pressure drops, indicator light alerts operator and parking brake automatically applies.

STEERING SYSTEM	
Type	Load sensing hydrostatic articulated steering
Pump	Variable displacement piston pump, 211 lpm
System Pressure	210 bar (3,046 psi)
Cylinder	Double acting
Steering Angle	40° to both right and left angle, respectively
Features	Center-point frame articulation. Tilt and telescopic steering column.

\* Hyundai Bio Hydraulic Oil (HBHO) available

SERVICE REFILL CAPACITIES	
Fuel tank	230 liters (60.8 US gal)
Cooling system	42.5 liters (11.2 US gal)
Crankcase	18.0 liters (4.8 US gal)
Transmission	44 liters (11.6 US gal)
Front axle	35 liters (9.2 US gal)
Rear axle	35 liters (9.2 US gal)
Hydraulic tank	110 liters (29.1 US gal)
Hydraulic System (Including Tank)	190 liters (50.2 US gal)

CABIN
ROPS / FOPS Cabin Meet ISO 3471 and ISO 3449

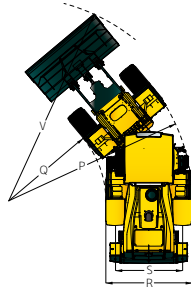
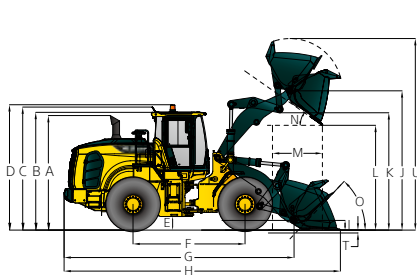
SOUND	
Guaranteed noise level presented below can be differed depending on a range of factors such as operating condition, speed of a cooling fan, types of engine and so forth. Hearing protection shall be necessary if an operator is working in the improperly maintained cabin or exposed to a noisy environment by leaving doors and/or windows open.	
Operator Sound Pressure Level (ISO 6396:2008)	70 dB(A)
Exterior Sound Power Level (ISO 6395:2008)	104 dB(A)



## DIMENSIONS & SPECIFICATIONS

## HL955 DIMENSIONS

All dimensions are approximate



Unit: mm (ft · in)

	Description	HL955	HL955XT
A	Height to Top of Exhaust Pipe	3,320 (10' 11")	3,320 (10' 11")
B	Height to Top of Cabin	3,390 (11' 1")	3,390 (11' 1")
C	Height to Top of Product Link Antenna	3,440 (11' 3")	3,440 (11' 3")
D	Height to Top of Warning Beacon	3,520 (11' 7")	3,520 (11' 7")
E	Ground Clearance	410 (1' 4")	410 (1' 4")
F	Wheelbase	3,050 (10')	3,050 (10')
G	Overall Length (without Bucket)	6,430 (21' 1")	7,025 (23' 1")
H	Shipping Length (with Bucket Level on Ground)	7,715 (25' 4")	8,310 (27' 3")
I	Hinge Pin Height at Carry Position	440 (1' 5")	610 (2')
J	Hinge Pin Height at Maximum Lift	3,940 (12' 11")	4,515 (14' 10")

- T, U, V are indicated on the p.17

Description		HL955	HL955XT
K	Lift Arm Clearance at Maximum Lift	3,340 (10' 11")	3,905 (12' 10")
L	Dump Clearance at Maximum Lift and 45° Discharge	2,785 (9' 2")	3,360 (11')
M	Reach at Maximum Lift and 45° Discharge	1,180 (3' 10")	1,220 (4')
N	Dump Angle at Maximum Lift and Dump (on Stops)	48	48
O	Roll Backangle	41	41
	Ground Carry	46	47
P	Clearance Circle (Diameter) to Outside of Tyres	11,140 (36' 7")	11,140 (36' 7")
Q	Clearance Circle (Diameter) to Inside of Tyres	5,980 (19' 4")	5,980 (19' 4")
R	Width Over Tyres (Unloaded)	2,530 (8' 4")	2,530 (8' 4")
S	Tread Width	2,010 (6' 7")	2,010 (6' 7")

## OPERATING SPECIFICATIONS WITH BUCKETS

Linkage Bucket Type		General Purpose Pin On		Highlift Boom Change
Edge Type	Bolt-On Cutting Edges	2-Bolt-On Tooth & Segment Edge Type	Bolt-On Cutting Edges ISO Q/C	
Capacity – Rated	2.8 m³ (3.70 yd³)	2.8 m³ (3.70 yd³)	2.8 m³ (3.70 yd³)	-
Capacity – Rated at 110% Fill Factor	3.1 m³ (4.00 yd³)	3.1 m³ (4.00 yd³)	3.1 m³ (4.00 yd³)	-
Width	2,740 mm (8'12" ft/in)	2,810 mm (9'3" ft/in)	2,740 mm (8'12" ft/in)	-
Dump Clearance at Maximum Lift and 45° Discharge	2,785 mm (9'2" ft/in)	2,660 mm (8'9" ft/in)	2,600 mm (8'6" ft/in)	575 mm (1'11" ft/in)
Reach at Maximum Lift and 45° Discharge	1,180 mm (3'10" ft/in)	1,275 mm (4'2" ft/in)	1,355 mm (4'5" ft/in)	40 mm (0'2" ft/in)
Digging Depth	85 mm (0'3" ft/in)	105 mm (0'4" ft/in)	85 mm (0'3" ft/in)	35 mm (0'1" ft/in)
Shipping Length (with Bucket)	7,715 mm (25'4" ft/in)	7,870 mm (25'10" ft/in)	7,970 mm (26'2" ft/in)	595 mm (1'11" ft/in)
Overall Height with Bucket at Maximum Lift	5,330 mm (17'6" ft/in)	5,330 mm (17'6" ft/in)	5,515 mm (18'1" ft/in)	575 mm (1'11" ft/in)
Loader Clearance Circle with Bucket at Carry Position	12,550 mm (41'2" ft/in)	12,720 mm (41'9" ft/in)	12,700 mm (41'8" ft/in)	600 mm (1'12" ft/in)
Static Tipping Load, Straight (No Tire Deflection)"	11,000 kg (24,255 lb)	10,950 kg (24,145 lb)	9,900 kg (21,830 lb)	-1,900 kg (-4,185 lb)
Static Tipping Load, Articulated (No Tire Deflection)	9,550 kg (21,055 lb)	9,500 kg (20,945 lb)	8,600 kg (18,960 lb)	-1,650 kg (-3,635 lb)
Breakout Force	14,370 kg (31,685 lb)	14,370 kg (31,685 lb)	11,980 kg (26,415 lb)	170 kg (375 lb)
Operating Weight*	15,650 kg (34,505 lb)	15,705 kg (34,625 lb)	16,025 kg (35,330 lb)	690 kg (1,525 lb)

## BUCKET SELECTION CHART AND SPECIFICATION

## DENSITY OF OPERATING MATERIALS

Loose Material		Material Density [ton / m³]
Earth / Clay		1.5 ~ 1.7
Sand and Gravel		1.5 ~ 1.7
Aggregate	25 ~ 76 mm (1 to 3 in)	1.6 ~ 1.7
	19 mm (0.75 in) and larger	1.8

## HL955 BUCKET SELECTION CHART

### Standard Lift Arm - General Purpose Bucket

Type	m³	Material Density [Ton/m³]															
		0.8	0.9	1.0	1.1	1.2	1.3	1.4	1.5	1.6	1.7	1.8	1.9	2.0	2.1	2.2	2.3
Cutting Edge	2.8 (3.7)	3.2 m³ (4.2 yd³)										2.7 m³ (3.5 yd³)					
2-Bolt on Tooth & Segment	2.8 (3.7)	3.2 m³ (4.2 yd³)										2.7 m³ (3.5 yd³)					
Cutting Edge ISO Q/C	2.8 (3.7)	3.2 m³ (4.2 yd³)								2.7 m³ (3.5 yd³)							

### High Lift Arm (XT) - General Purpose Bucket

Type	m³	Material Density [Ton/m³]																	
		0.8	0.9	1.0	1.1	1.2	1.3	1.4	1.5	1.6	1.7	1.8	1.9	2.0	2.1	2.2	2.3	2.4	
Cutting Edge	2.8 (3.7)	3.2 m³ (4.2 yd³)								2.7 m³ (3.5 yd³)									
2-Bolt on Tooth & Segment	2.8 (3.7)	3.2 m³ (4.2 yd³)								2.7 m³ (3.5 yd³)									
Cutting Edge ISO Q/C	2.8 (3.7)	3.2 m³ (4.2 yd³)						2.7 m³ (3.5 yd³)											



## CHANGE IN OPERATING SPECIFICATIONS - TIRES

Tires		20.5-25 L5 16PR	20.5R25 XHA2 ★	20.5-25 L3 16PR
Operating Weight(kg)	kg	420	-56	-108
	lb	930	-120	-235
Static Tipping Load, Straight (No Tyre Deflection)	kg	280	-35	-70
	lb	620	-75	-150
Static Tipping Load, Articulated (No Tyre Deflection)	kg	240	-30	-60
	lb	530	-65	-130
Vertical Height Changes	mm	33	-4	-2
	ft/in	1.3"	-0.2"	-0.1"
R. Width Over Tyres(unloaded)	mm	27	7	-6
	ft/in	1.1"	0.3"	-0.2"
P. Clearance Circle (diameter) to Outside of Tyres	mm	27	7	-6
	ft/in	1.1"	0.3"	-0.2"
Q. Clearance Circle (diameter) to Inside of Tyres	mm	-27	-7	6
	ft/in	-1.1"	-0.3"	0.2"

\*\* Dimension changes compared to 20.5R25 L3 ★★ radial tires.

### CHANGE IN OPERATING SPECIFICATIONS - CWT

		CWT - Heavy weight
Operating Weight(kg)	kg	300
	lb	665
Static Tipping Load, Straight (No Tyre Deflection)	kg	640
	lb	1,415
Static Tipping Load, Articulated (No Tyre Deflection)	kg	555
	lb	1,225
Shipping Length	mm	0
	ft/in	0"



STANDARD / OPTION

CABIN & INTERIOR	STD	OPT
ALARMS, AUDIBLE AND VISUAL		
Air filter clogging	●	
Battery voltage	●	
Brake oil pressure	●	
Engine coolant level	●	
Engine oil pressure	●	
Fuel level	●	
Hydraulic oil temperature	●	
Engine coolant temperature	●	
Service brake oil pressure	●	
Transmission error	●	
Transmission oil temperature	●	
Seat belt ON/OFF	●	
BATTERIES		
1000 CCA, 12 V, 2 pcs	●	
GAUGES		
Engine coolant temperature	●	
Fuel level	●	
Speedometer	●	
Transmission oil temperature	●	
INDICATOR LIGHTS		
Parking brake	●	
Head light (High beam)	●	
Pilot cut off	●	
Turning light	●	
Seat belt ON/OFF	●	
Engine auto stop	●	
Clutch Cut Off	●	
Ride control		●
Joystick steering		●
FNR		●
Differential Lock		●
LCD DISPLAY (CLUSTER)		
Transmission gear range	●	
Parking brake	●	
FWD / REV	●	
LCD DISPLAY (MONITOR)		
Engine rpm	●	
Fuel rate	●	
Fault and maintenance warning	●	
Odometer	●	
Hour meter	●	
Horn, electric	●	
LIGHTING SYSTEM		
Brake lights(Counterweight)	●	
LED dome light	●	
2 stop and tail lights	●	
4 turn signals	●	
2 Head lights on front tower	●	
2 Head lights (LED) on front tower		●
2 Working lights on front roof	●	
4 Working lights on front roof		●
2 Working lights on rear roof		●
4 Working lights (LED) on front roof		●
2 Working lights (LED) on rear roof		●
2 Working lights on grill	●	
2 Working lights (LED) on grill		●

CABIN & INTERIOR	STD	OPT
SWITCHES		
Hazard	●	
Engine hood open	●	
Parking	●	
Battery master switch	●	
FNR shifter	●	
Pilot cut off	●	
Differential Lock foot switch		●
Emergency steering		●
IGNITION		
Key	●	
Button		●
MEMBRANE SWITCHES IN MONITOR		
Main light	●	
Work light	●	
Weighing System	●	
Mirror heat	●	
Auto position	●	
Fine modulation	●	
Rear wiper	●	
Auto grease		●
Quick coupler		●
Ride control		●
Beacon light		●
Cam		●
CABIN (SOUND SUPPRESSED)		
ROPS/ FOPS Cabin	●	
Coat hook	●	
Rear view mirrors (1 Inside / 2 Outside, heated)	●	
Steering column, tilt and telescopic	●	
Steering wheel with knob	●	
Roller type sunshade (Front window)	●	
Roller type sunshade (Rear window)		●
Tinted safety glass	●	
Magazine pocket	●	
Radio / USB player	●	
Wrist rest & Armrest	●	
24 V to 12 V DC converter (20 A)	●	
DOOR		
Door and cabin locks, one key	●	
Doors, service access (Locking)		●
Doors, service access (Remote control)		●
AUTOMATIC CLIMATE CONTROL		
Air conditioner & heater	●	
Defroster	●	
Intermittent wiper and washer, front and rear	●	
SEAT		
3" Retractable seat belt & adjustable air suspension (heated)		●
PERSONAL STORAGE SPACE		
Console box	●	
Holder, can and cup	●	
PEDALS		
One brake pedal	●	
Dual-Brake pedal		●

ENGINE	STD	OPT
Hyundai HE6.7 Engine	●	
POWER TRAIN		
Transmission F4 / R3, computer controlled, electronic soft shift, auto-shift and kick-down features included	●	
Torque converter	●	
Transmission oil sight level	●	
Transmission oil cooler	●	
Travel speed limiter (20-40 km/h)	●	
FRONT AXLE		
Limited slip differential	●	
Hydraulic lock differential		●
REAR AXLE		
Conventional Type	●	
Limited slip differential		●
BRAKE		
Service brake (Enclosed wet-disk)	●	
Parking brake	●	
TIRE		
20.5R25 L3 ★★	●	
20.5-25 L5 16PR		●
20.5R25, XHA2 ★		●
20.5-25 L3 16PR		●
HYDRAULIC SYSTEM		
Boom kickout, automatic	●	
Bucket positioner, automatic	●	
Diagnostic pressure taps	●	
Hydraulic oil cooler	●	
Hydraulic oil level sight gauge	●	
EH Control (Joystick)	●	
EH Control (Fingertip)		●
Ride control system		●
Extra piping-for auxiliary function		●
Quick coupler piping		●
Auto grease system		●
SAFETY		
Emergency Stop	●	
Emergency steering		●
Rear View Camera		●
Fire extinguisher		●
Boom safety bar		●
OBJECT DETECTION		
AAVM (AVM + IMOD)		●
Radar + Secondary Monitor		●
OTHERS		
Fuel Warmer	●	
Articulation locking bar	●	
Lift and tie-down hooks	●	
Loader linkage, sealed	●	
Vandalism protection caplocks	●	
E-Horn	●	
Tool kit		●
BUCKET		
2.8m³ Bolt-On Cutting Edges Type	●	
2.8m³ 2-Bolt-On Tooth & Segment Edge Type		●
2.8m³ Bolt-On Cutting Edges ISO Q/C		●
COUNTERWEIGHT		
Counterweight	●	
Counterweight - Heavy weight		●
Drawbar with pin	●	

ERGONOMICALLY LOCATED AND SLIP RESISTANT, LEFT & RIGHT		
Handrails / Ladders / Platforms / Steps	●	
GUARDS		
Fenders (Front / Rear)	●	
Under Guard (E/G, T/M)		●
Mud Guard		●
TELEMETICS		
ECD (Engine connected Diagnostics)	●	
Hi-Mate		●

- \* Standard and optional equipment may vary.  
Contact your Hyundai dealer for more information. The machine may vary according to International standards.
- \* The photos may include attachments and optional equipment that are not available in your area.
- \* Materials and specifications are subject to change without advance notice.
- \* All imperial measurements rounded off to the nearest pound or inch.